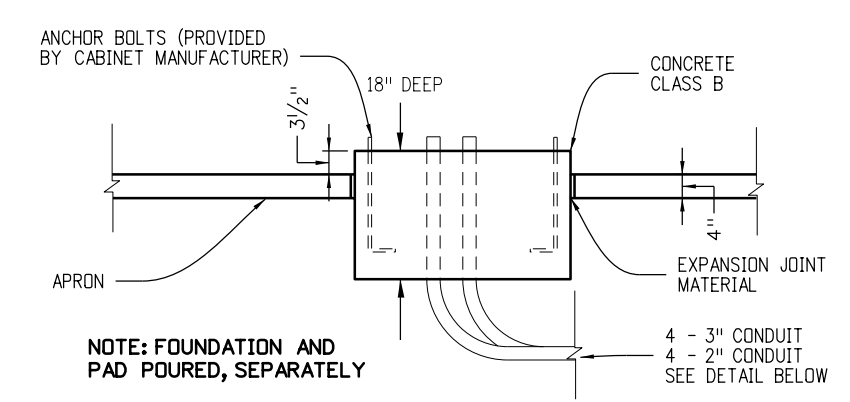
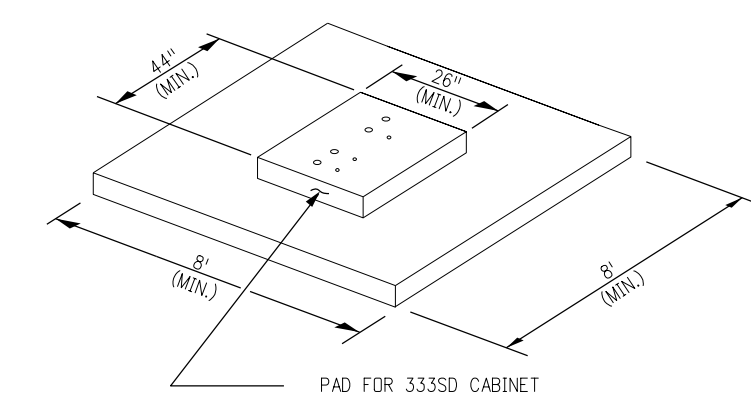
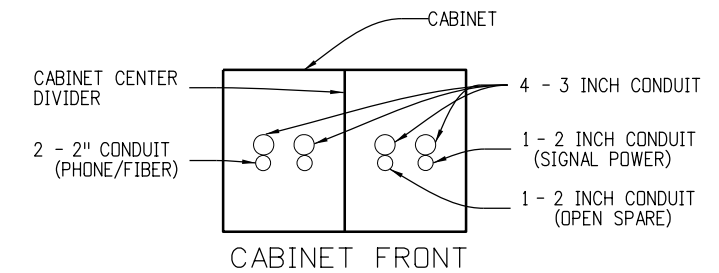
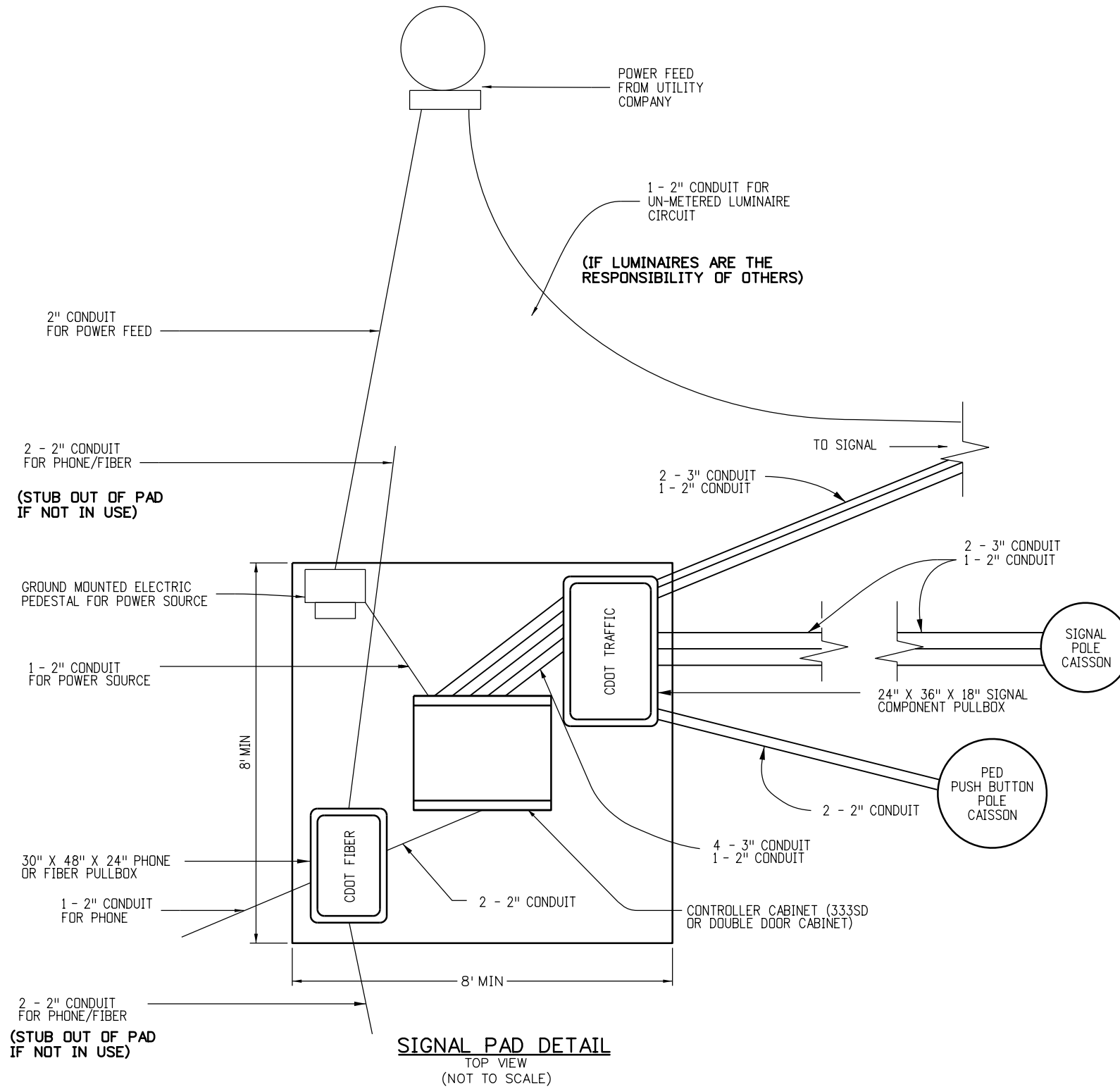




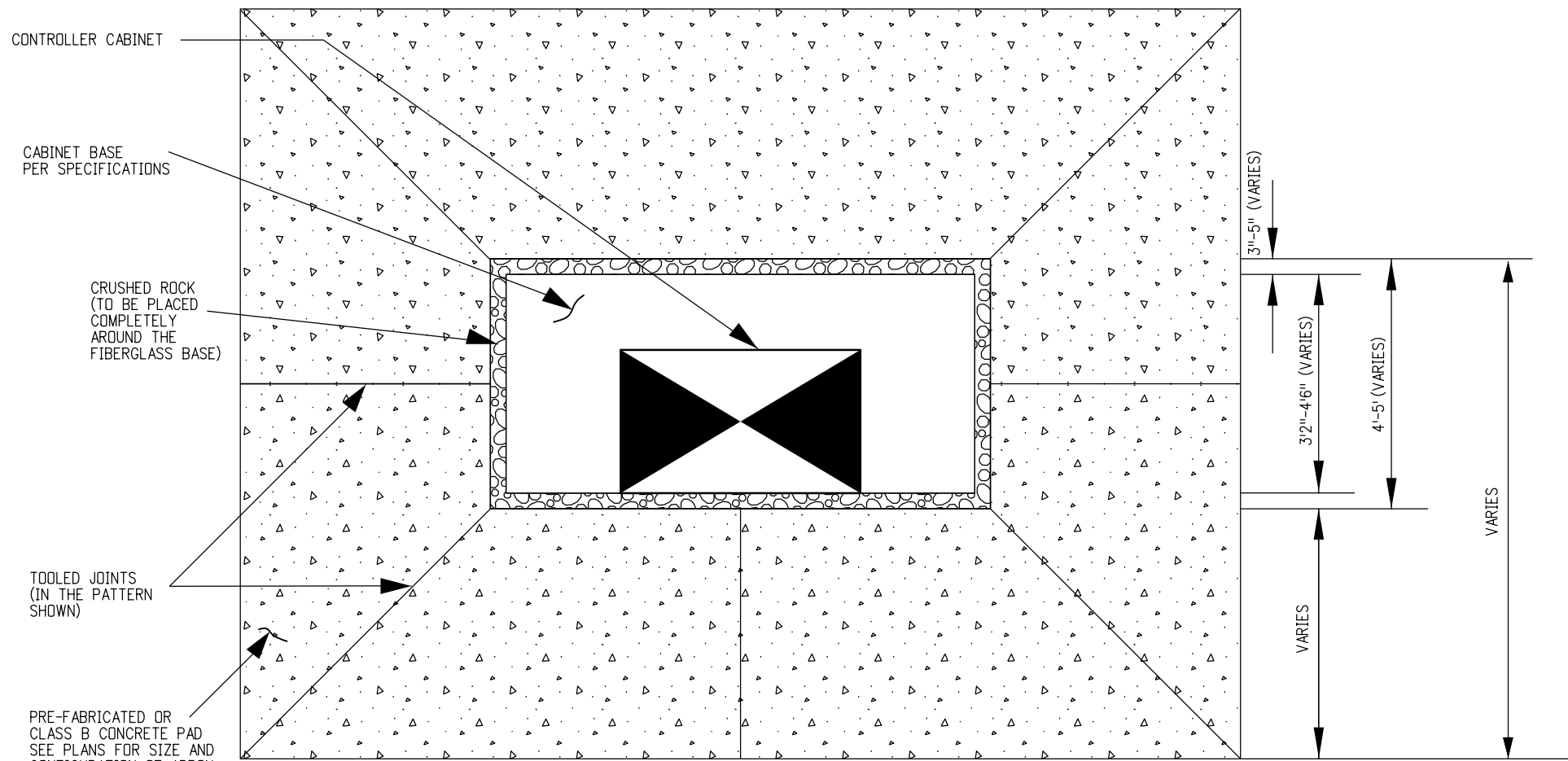
GENERAL NOTES

1. THE CONCRETE PAD SURROUNDING THE CABINET BASE SHALL BE CLASS B MIX. GLASS OR SYNTHETIC FIBERS SHALL BE INCORPORATED INTO THE CONCRETE MIX. THE DOSAGE RATE OF THE GLASS OR SYNTHETIC FIBERS SHALL BE THE DOSAGE RATE RECOMMENDED BY THE MANUFACTURER OF THE GLASS OR SYNTHETIC FIBERS. ALL WORK INVOLVING THE CONSTRUCTION OF THE CONCRETE PAD FOR THE SIGNAL CONTROLLER CABINET WILL NOT BE PAID FOR SEPARATELY, BUT SHALL BE INCLUDED IN COST OF THE CONTROLLER CABINET PAY ITEM.



CAST-IN-PLACE FOUNDATION

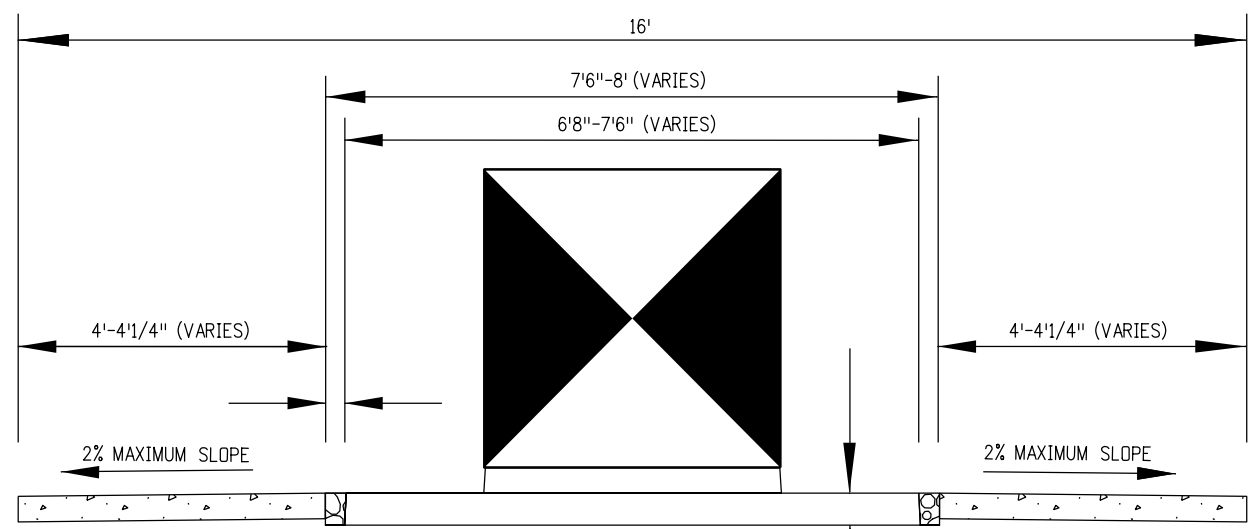
Computer File Information Creation Date: 07/04/12 Created By: KEN Last Modification Date: 04/04/24 Last Modified By: AVU CAD Ver.: MicroStation V8 Scale: Not to Scale Units: English		Sheet Revisions <table border="1"> <thead> <tr> <th>Date:</th> <th>Comments</th> </tr> </thead> <tbody> <tr> <td>04/04/24</td> <td>MOVED PULL BOX DETAILS TO S-613-3</td> </tr> <tr> <td> </td> <td> </td> </tr> <tr> <td> </td> <td> </td> </tr> </tbody> </table>		Date:	Comments	04/04/24	MOVED PULL BOX DETAILS TO S-613-3					Colorado Department of Transportation  2829 W. Howard Pl. Denver, CO 80204 Phone: 303-757-9436 FAX: 303-757-9219 Traffic & Safety Engineering		CABINET FOUNDATION DETAIL Issued By: Traffic & Safety Engineering Branch July 31, 2019		STANDARD PLAN NO. S-614-42 Standard Sheet No. 1 of 4 Project Sheet Number:	
Date:	Comments																
04/04/24	MOVED PULL BOX DETAILS TO S-613-3																
 Traffic & Safety Engineering				MKB													



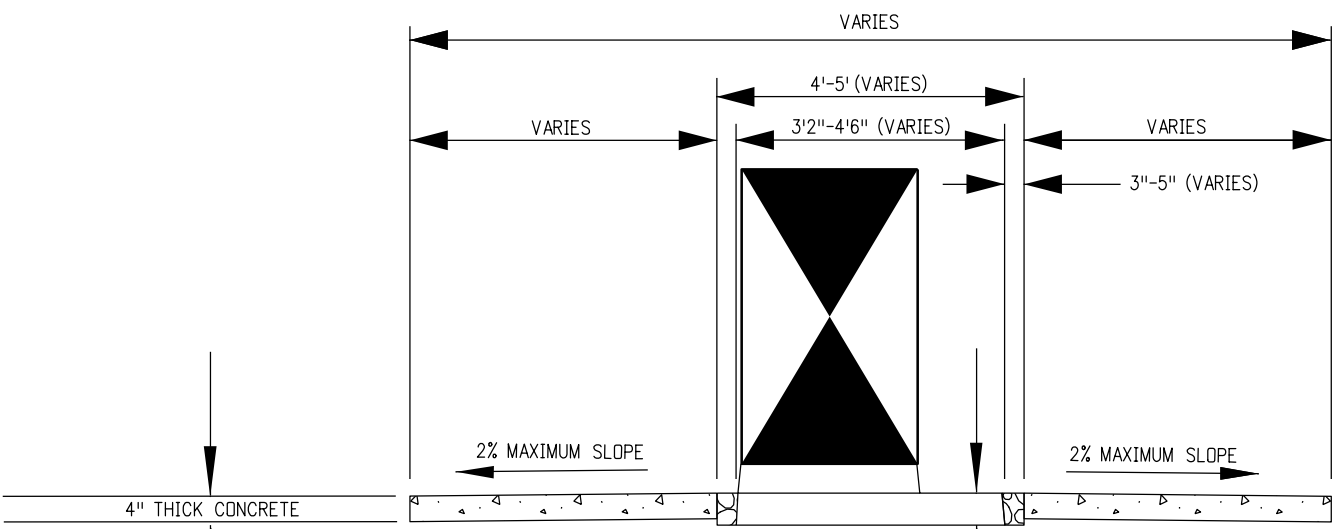
CONCRETE PAD NOTES

1. CONTRACTOR SHALL INSTALL PRE-FABRICATED OR CAST-IN-PLACE, FIBERGLASS CONCRETE PAD. SEE SPECIFICATION FOR MORE INFORMATION ON THE CONCRETE MATERIAL.
2. CONTRACTOR SHALL PLACE A 4-INCH THICK CONCRETE PAD (CAST-IN-PLACE OR PRE-FABRICATED), AS INDICATED IN THE PLANS, OR AS DIRECTED BY THE ENGINEER. THE CONCRETE PAD SHALL SLOPE AWAY FROM THE FIBERGLASS BASE AT A MAXIMUM 2% SLOPE.
3. THE CONCRETE PAD SURROUNDING THE CABINET BASE SHALL BE CLASS B MIX. GLASS OR SYNTHETIC FIBERS SHALL BE INCORPORATED INTO THE CONCRETE MIX. THE DOSAGE RATE OF THE GLASS OR SYNTHETIC FIBERS SHALL BE THE DOSAGE RATE RECOMMENDED BY THE MANUFACTURER OF THE GLASS OR SYNTHETIC FIBERS. ALL WORK INVOLVING THE CONSTRUCTION OF THE CONCRETE PAD FOR THE SIGNAL CONTROLLER CABINET WILL NOT BE PAID FOR SEPARATELY, BUT SHALL BE INCLUDED IN THE COST OF THE CONTROLLER CABINET PAY ITEM.
4. PRE-FABRICATED CONCRETE BASE DIMENSIONS SHOWN VARY PER MANUFACTURER'S SPECIFICATIONS.
5. PRE-FABRICATED CONCRETE BASE MANUFACTURER SHALL PROVIDE CONNECTION POINTS IN THE BASE FOR THE SPECIFIC CONTROLLER CABINET SPECIFIED IN THE PLANS.

TOP VIEW



FRONT VIEW



SIDE VIEW

PRE-FABRICATED FIBERGLASS FOUNDATION

Computer File Information	
Creation Date: 07/04/12	
Created By: KEN	
Last Modification Date: 07/31/19	
Last Modified By: AVU	
CAD Ver.: MicroStation V8	Scale: Not to Scale Units: English

Sheet Revisions	
Date:	Comments

Colorado Department of Transportation



2829 W. Howard Pl.
Denver, CO 80204
Phone: 303-757-9436
FAX: 303-757-9219

Traffic & Safety Engineering MKB

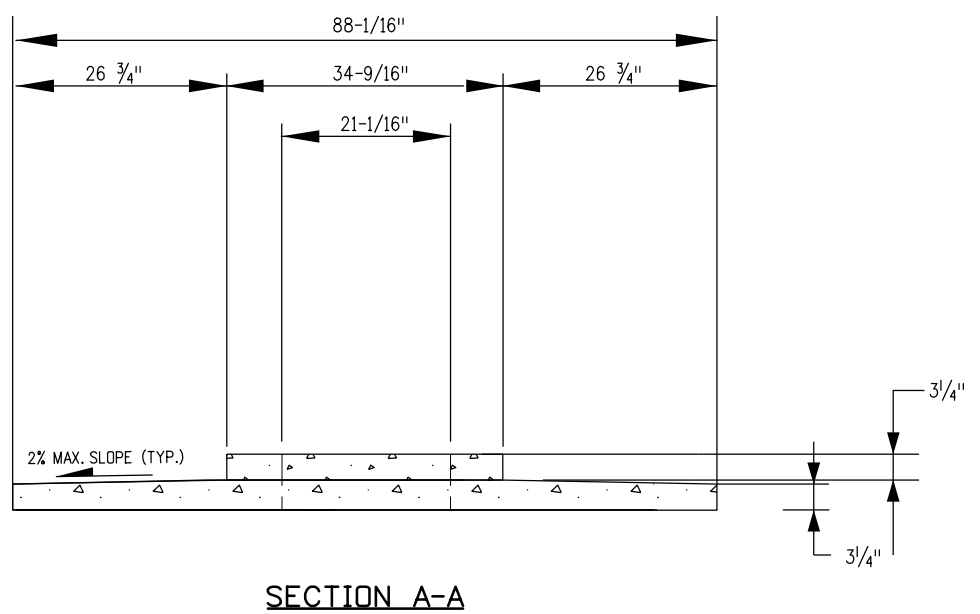
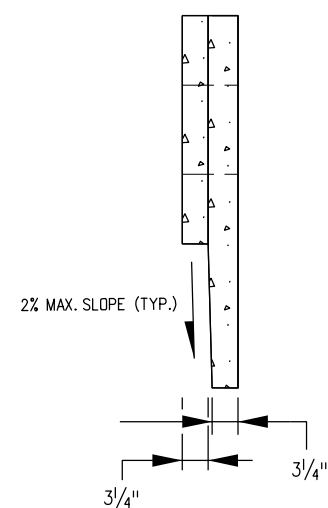
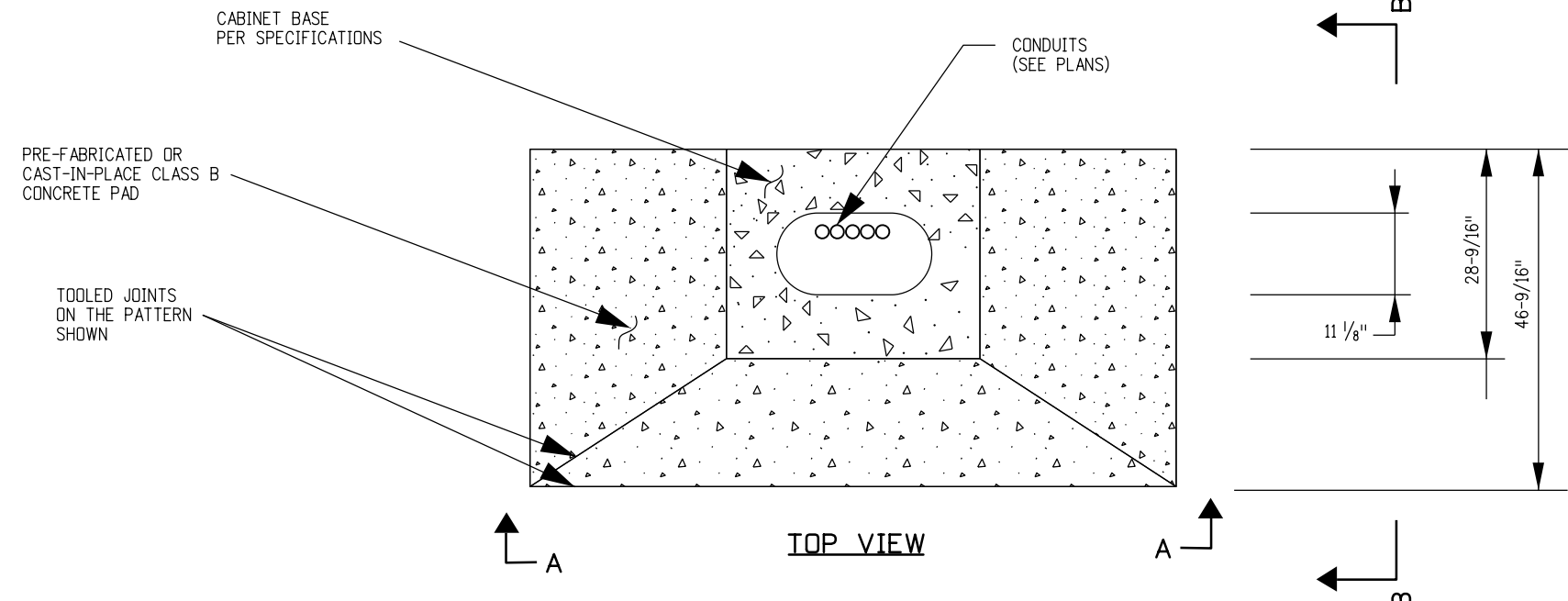
**CABINET FOUNDATION
DETAIL**

Issued By: Traffic & Safety Engineering Branch July 31, 2019

**STANDARD PLAN NO.
S-614-42**

Standard Sheet No. 2 of 4

Project Sheet Number:



SECTION B-B

CONCRETE PAD NOTES

1. CONTRACTOR SHALL INSTALL PRE-FABRICATED OR CAST-IN-PLACE CONCRETE PAD. SEE SPECIFICATION FOR MORE INFORMATION ON THE CONCRETE MATERIAL.
2. CONTRACTOR SHALL PLACE A 3/4-INCH THICK CONCRETE PAD (CAST-IN-PLACE OR PRE-FABRICATED), AS INDICATED IN THE DETAILS, OR AS DIRECTED BY THE ENGINEER. THE CONCRETE PAD SHALL SLOPE AWAY FROM THE FIBERGLASS BASE AT A MAXIMUM 2% SLOPE.
3. THE CONCRETE PAD SURROUNDING THE PRE-FABRICATED OR CAST-IN-PLACE BASE SHALL BE CLASS B MIX. GLASS OR SYNTHETIC FIBERS SHALL BE INCORPORATED INTO THE CONCRETE MIX. THE DOSAGE RATE OF THE GLASS OR SYNTHETIC FIBERS SHALL BE THE DOSAGE RATE RECOMMENDED BY THE MANUFACTURER OF THE GLASS OR SYNTHETIC FIBERS. ALL WORK INVOLVING THE CONSTRUCTION OF THE CONCRETE PAD FOR THE SIGNAL CONTROLLER CABINET WILL NOT BE PAID FOR SEPARATELY, BUT SHALL BE INCLUDED IN THE COST OF THE CONTROLLER CABINET PAY ITEM.
4. FOUNDATIONS SHALL BE LOCATED TO PROVIDE 34-INCH MINIMUM CLEARANCE BETWEEN FACE-OF-CURB AND ANY PORTION OF THE CONTROLLER CABINET.
5. IN UNPAVED AREAS, THE TOP FOUNDATION FOR MODELS 332 - 334 CONTROLLER CABINETS SHALL BE THREE (3) INCHES ABOVE SURROUNDING GRADE.
6. FIBERGLASS BASE DIMENSIONS SHOWN VARY PER MANUFACTURER'S SPECIFICATIONS.

FOUNDATION DETAILS

FOR MODEL 332 THROUGH 334 CONTROLLER CABINETS

Computer File Information	
Creation Date:	07/04/12
Created By:	KEN
Last Modification Date:	
Last Modified By:	
CAD Ver.: MicroStation V8 Scale: Not to Scale Units: English	

Sheet Revisions	
Date:	Comments

Colorado Department of Transportation



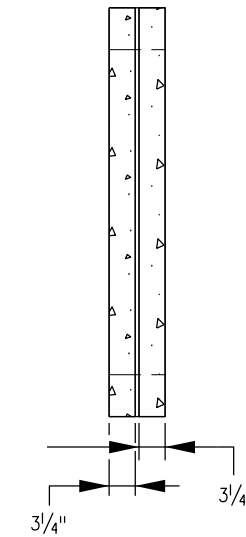
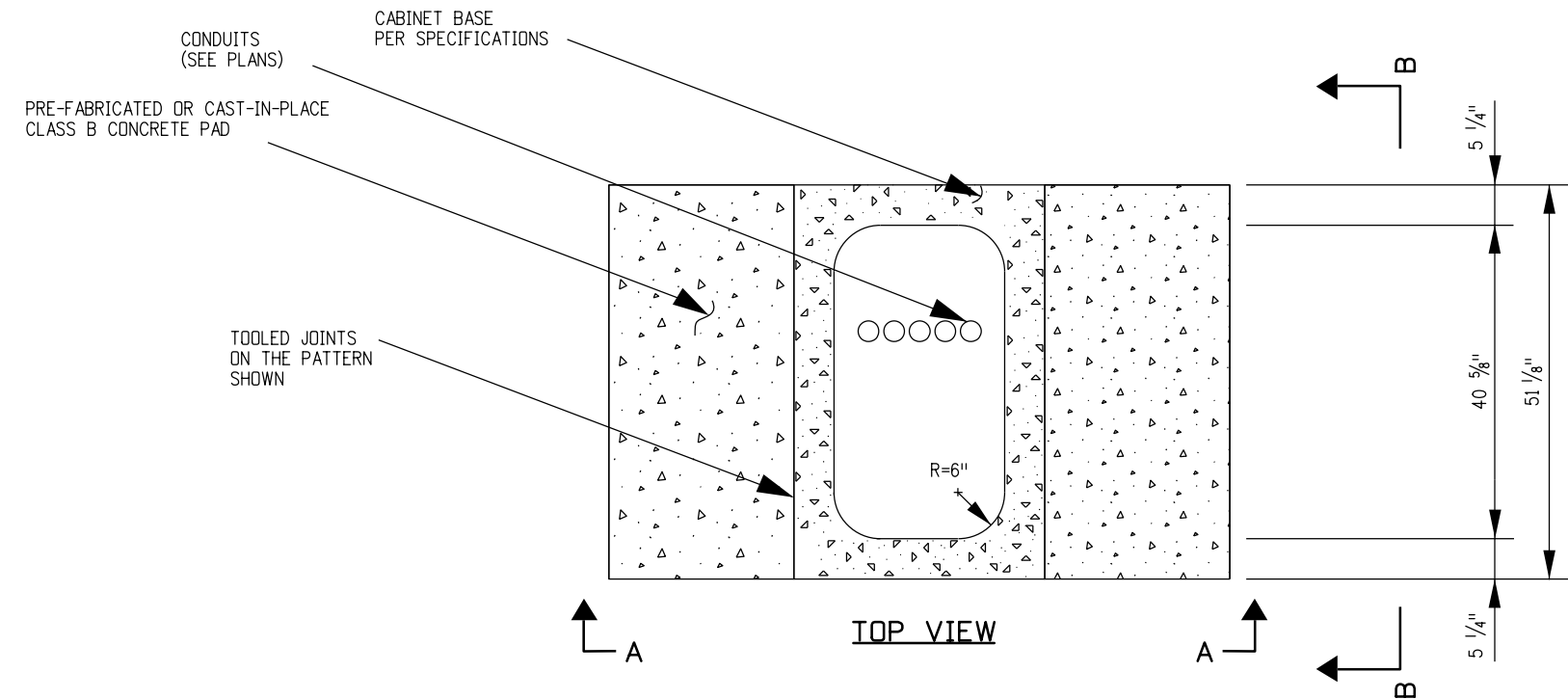
2829 W. Howard Pl.
Denver, CO 80204
Phone: 303-757-9436
FAX: 303-757-9219

Traffic & Safety Engineering MKB

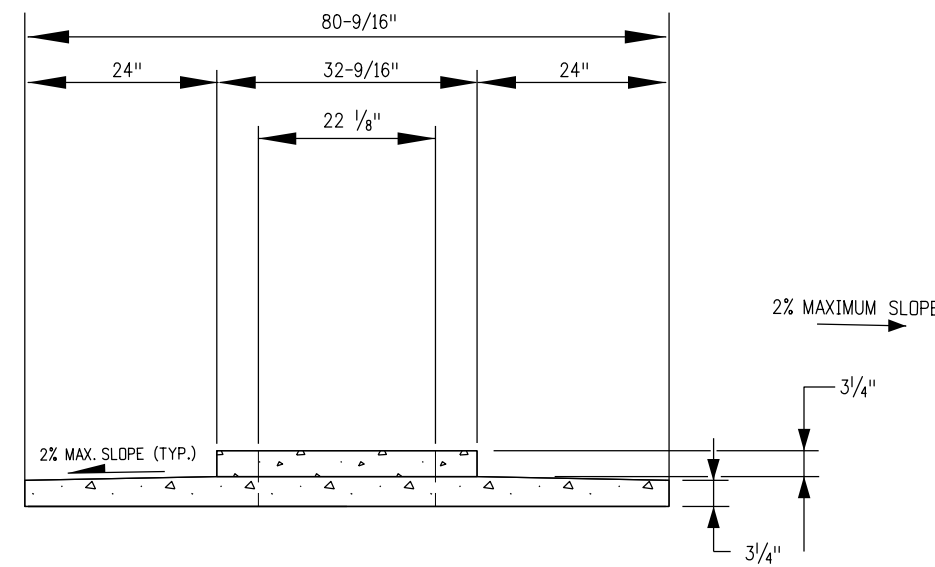
**CABINET FOUNDATION
DETAIL**

Issued By: Traffic & Safety Engineering Branch July 31, 2019

STANDARD PLAN NO.
S-614-42
Standard Sheet No. 3 of 4
Project Sheet Number:



SECTION B-B



SECTION A-A

CONCRETE PAD NOTES

1. CONTRACTOR SHALL INSTALL PRE-FABRICATED OR CAST-IN-PLACE CONCRETE PAD. SEE SPECIFICATION FOR MORE INFORMATION ON THE CONCRETE MATERIAL.
2. CONCRETE SHALL PLACE A 3/4-INCH THICK CONCRETE PAD (CAST-IN-PLACE OR PRE-FABRICATED), AS INDICATED IN THE DETAILS, OR AS DIRECTED BY THE ENGINEER. THE CONCRETE PAD SHALL SLOPE AWAY FROM THE FIBERGLASS BASE AT A MAXIMUM 2% SLOPE.
3. THE CONCRETE PAD SURROUNDING THE PRE-FABRICATED OR CAST-IN-PLACE BASE SHALL BE CLASS B MIX. GLASS OR SYNTHETIC FIBERS SHALL BE INCORPORATED INTO THE CONCRETE MIX. THE DOSAGE RATE OF THE GLASS OR SYNTHETIC FIBERS SHALL BE THE DOSAGE RATE RECOMMENDED BY THE MANUFACTURER OF THE GLASS OR SYNTHETIC FIBERS. ALL WORK INVOLVING THE CONSTRUCTION OF THE CONCRETE PAD FOR THE SIGNAL CONTROLLER CABINET WILL NOT BE PAID FOR SEPARATELY, BUT SHALL BE INCLUDED IN THE COST OF THE CONTROLLER CABINET PAY ITEM.
4. FOUNDATIONS SHALL BE LOCATED TO PROVIDE 34-INCH MINIMUM CLEARANCE BETWEEN FACE-OF-CURB AND ANY PORTION OF THE CONTROLLER CABINET.
5. IN UNPAVED AREAS, THE TOP FOUNDATION FOR MODELS 332D AND 333JP CONTROLLER CABINETS SHALL BE THREE (3) INCHES ABOVE SURROUNDING GRADE.
6. FIBERGLASS BASE DIMENSIONS SHOWN VARY PER MANUFACTURER'S SPECIFICATIONS.

FOUNDATION DETAILS
FOR MODEL 332D - 333JP CABINETS

Computer File Information		Sheet Revisions		Colorado Department of Transportation  2829 W. Howard Pl. Denver, CO 80204 Phone: 303-757-9436 FAX: 303-757-9219 Traffic & Safety Engineering	CABINET FOUNDATION DETAIL	STANDARD PLAN NO.	
Creation Date: 07/04/12		Date:	Comments			S-614-42	
Created By: KEN						Standard Sheet No. 4 of 4	
Last Modification Date:						Project Sheet Number:	
Last Modified By:							
CAD Ver.: MicroStation V8 Scale: Not to Scale Units: English				MKB	Issued By: Traffic & Safety Engineering Branch July 31, 2019		