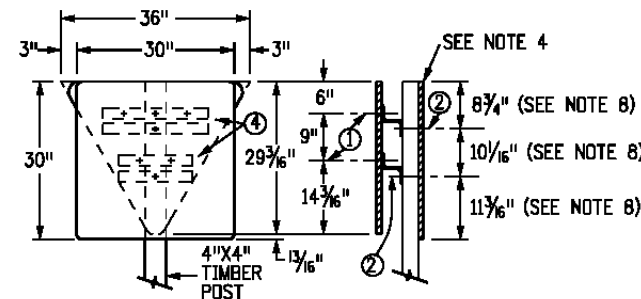
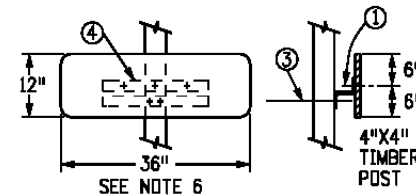


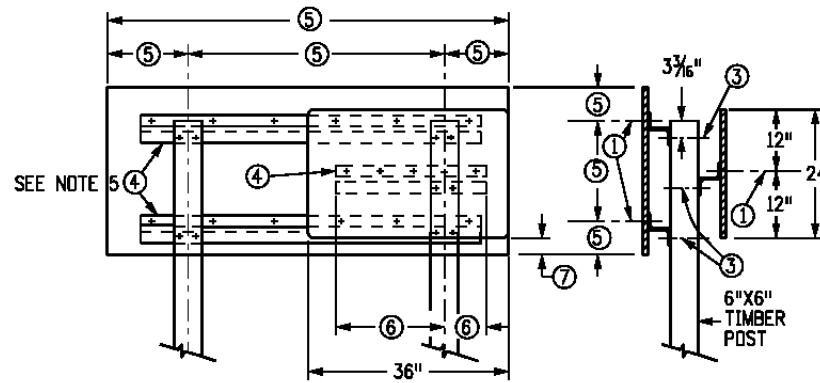
30" REGULATORY SIGN AND GUIDE SIGN



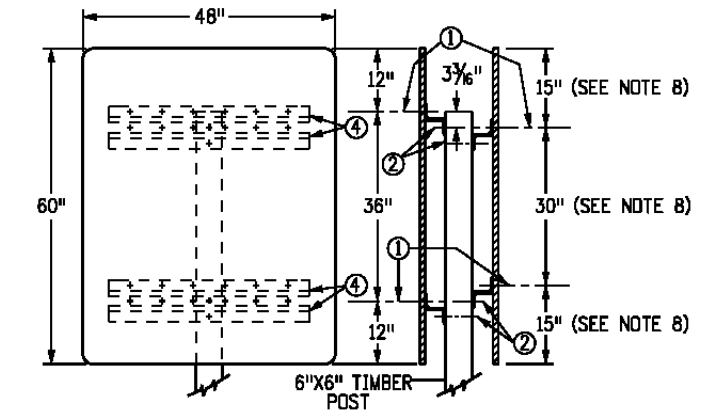
30" REGULATORY SIGN AND 36" TRIANGLE



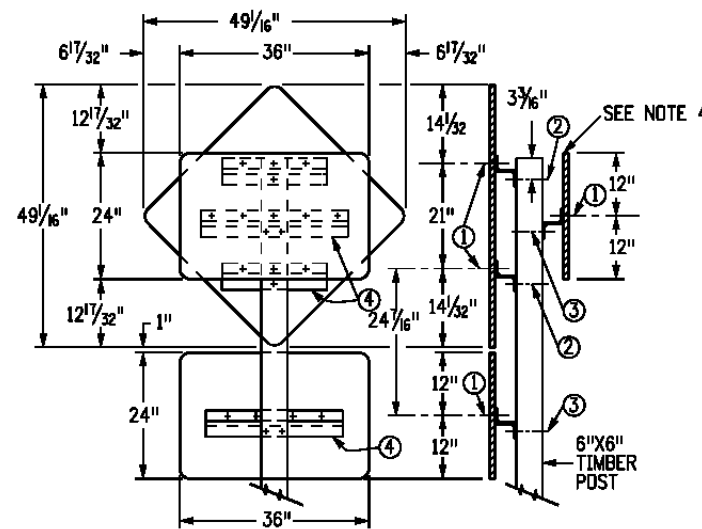
36" X 12" REGULATORY SIGN
(THIS DETAIL APPLIES ONLY WHEN SIGN IS MOUNTED ON THE SAME FACE WITH A CLASS II SIGN)



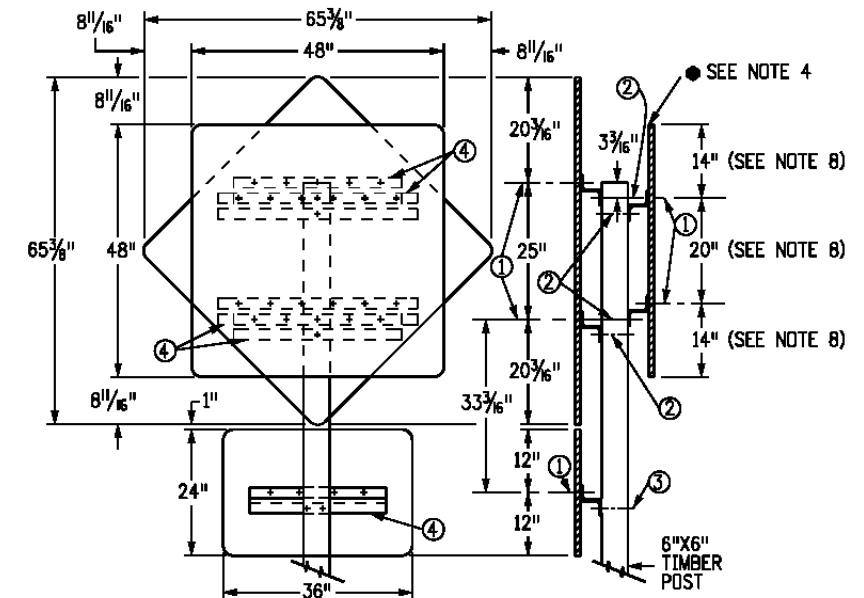
36" X 24" REGULATORY AND GUIDE SIGN



48" X 60" REGULATORY SIGNS



36" X 24" REGULATORY SIGN AND 36" DIAMOND WITH EDUCATIONAL PLAQUE



48" X 48" REGULATORY SIGN AND 48" DIAMOND WITH EDUCATIONAL PLAQUE

GENERAL NOTES

1. TIMBER SIGN POSTS MAY ONLY BE USED FOR TEMPORARY SIGNAGE DURING CONSTRUCTION. TUBULAR STEEL SHALL BE USED FOR PERMANENT INSTALLATION
2. FOR SIGN PLACEMENT SEE COLORADO STANDARD PLAN S-614-1.
3. FOR TYPICAL CLASS I, II AND III GROUND SIGN INSTALLATION DETAILS SEE COLORADO STANDARD PLANS S-614-2, S-614-3 AND S-614-4.
4. IF THE BACK-SIDE OF ANY PANEL USED IN THE MULTI-SIGN INSTALLATIONS (DO NOT ENTER, WRONG WAY, ETC.) PROTRUDES BEYOND THE EDGE OF ANOTHER PANEL THAT FACES TRAFFIC APPROACHING FROM A NORMAL OR PROPER DIRECTION, THE ENTIRE BACK-SIDE OF THE PROTRUDING PANEL SHALL BE PAINTED FLAT BLACK ENAMEL.
5. A BACKING ZEE SIZE OF 3 IN. X 2 IN. X 1/4 IN. SHALL BE USED FOR MOST GUIDE SIGN INSTALLATIONS.
6. 36 IN. X 12 IN. AND ALL SIGNS 30 IN. WIDE OR LESS BECOME CLASS II AND REQUIRE BACKING ZEE(S) WHEN THEY ARE MOUNTED ON THE SAME FACE AS A NORMAL CLASS II SIGN. ONE REGULAR 1 FT.-8 IN. ZEE WILL BE USED FOR THOSE 15 IN. OR LESS IN HEIGHT AND 2 REGULAR 1 FT.-8 IN. ZEES FOR THOSE GREATER THAN 15 IN. IN HEIGHT.
7. OTHER MULTI-SIGN INSTALLATIONS, NOT DETAILED ON THIS STANDARD, MAY BE REQUIRED BY THE PLANS AND ARE TO BE FABRICATED IN ACCORDANCE WITH THE GENERAL PRINCIPLES OF THIS STANDARD.
8. SPECIAL NON-STANDARD SPACING MAY BE REQUIRED TO FACILITATE ASSEMBLY OF MULTI-SIGN INSTALLATIONS.

FABRICATION LEGEND

- 1 3/8-IN 90° COUNTERSUNK ALUMINUM LOCKBOLT FASTENER.
- 2 5/8-IN GALVANIZED OR CADMIUM PLATED MACHINE BOLT, NUT AND WASHERS.
- 3 3/8-IN GALVANIZED OR CADMIUM PLATED MACHINE BOLT, NUT AND WASHERS.
- 4 3-IN X 2 1/16-IN X 1/4-IN BACKING ZEE.
- 5 GUIDE SIGN DIMENSION VARIES.
- 6 DIMENSION VARIES, PANEL SHALL NOT PROJECT BEYOND THE EDGE OF THE GUIDE SIGN.
- 7 THIS SPACE NOT TO EXCEED 1-IN - 6-IN, OTHERWISE CENTER PANEL VERTICALLY ON THE GUIDE SIGN.

Computer File Information

Creation Date: 07/04/12
Created By: KEN
Last Modification Date: 07/31/19
Last Modified By: AVU
CAD Ver.: MicroStation V8 Scale: Not to Scale Units: English

Sheet Revisions

Date:	Comments

Colorado Department of Transportation



2829 W. Howard Pl.
Denver, CO 80204
Phone: 303-757-9436
FAX: 303-757-9219

Traffic & Safety Engineering

MKB

TYPICAL MULTI-SIGN INSTALLATIONS

Issued By: Traffic & Safety Engineering Branch July 31, 2019

STANDARD PLAN NO.

S-614-22

Standard Sheet No. 1 of 1

Project Sheet Number: