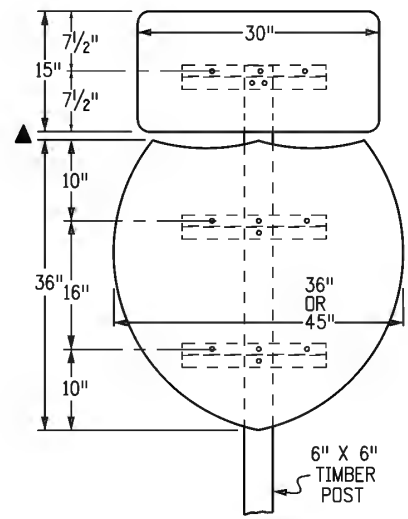
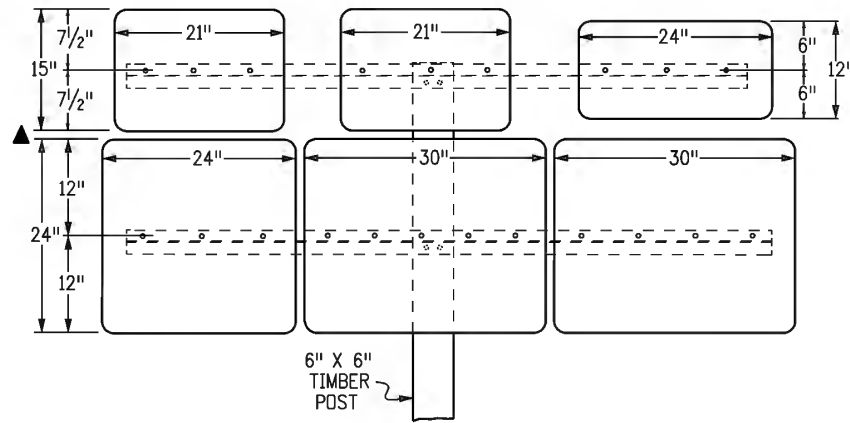
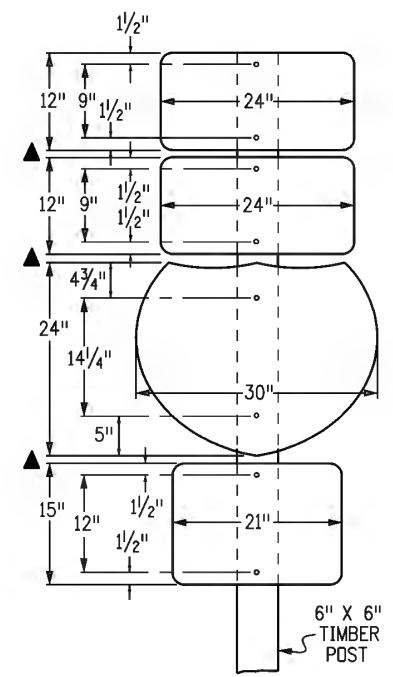
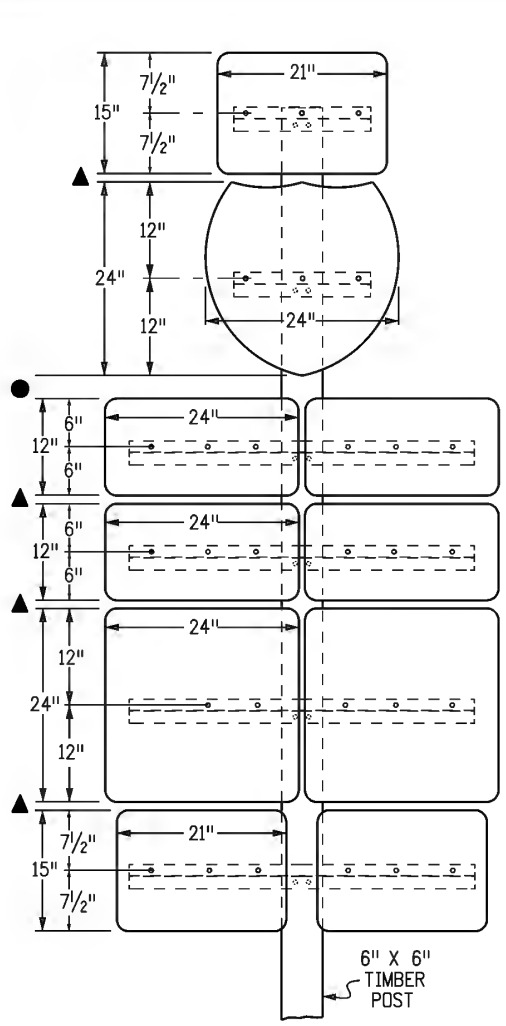


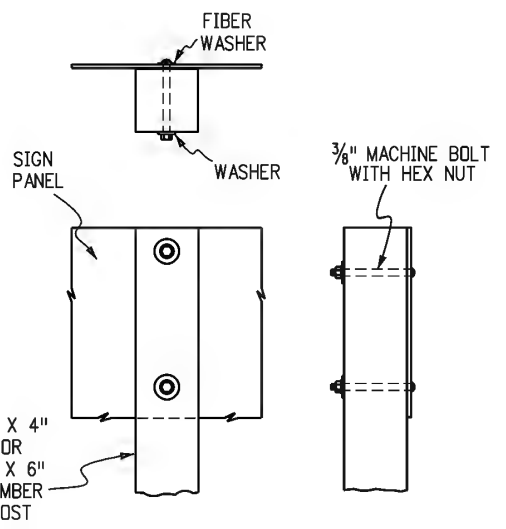
GENERAL NOTES

1. TIMBER SIGN POSTS MAY ONLY BE USED FOR TEMPORARY SIGNANCE DURING CONSTRUCTION. TUBULAR STEEL SHALL BE USED FOR PERMANENT INSTALLATION.
2. FOR SIGN PLACEMENT, SEE STANDARD PLAN S-614-1.
3. FOR TUBULAR STEEL POST INFORMATION, SEE STANDARD PLAN S-614-8.
4. ROUTE MARKERS SHALL BE SINGLE SHEET ALUMINUM, 0.100 INCH MINIMUM THICKNESS.
5. BACKING ZEES ARE 3-INCH X 2-INCH X 1/16-INCH 2.33 6061-T6 ALUMINUM ALLOY WEIGHING 2.33 POUNDS PER FOOT.
6. ALL SIGNS SHALL BE FABRICATED USING RETRO-REFLECTIVE SHEETING CONFORMING TO ASTM D4956. THE TYPE SHALL BE AS DESCRIBED IN THE STANDARD SPECIFICATIONS AND/OR AS SHOWN ON THE PLANS.
- ▲ 7. VERTICAL SPACING BETWEEN PANELS SHALL BE 1 INCH MINIMUM TO 1-1/2 INCH MAXIMUM.
- 8. VERTICAL SPACING BETWEEN GROUPS OF PANELS SHALL BE 4 INCH
9. BOLTS, NUTS, AND METAL WASHERS SHALL BE GALVANIZED OR CADMIUM PLATED.
10. Z-BAR LENGTH AND HOLE SPACING FOR AUXILIARY MARKERS TO BE THE SAME AS FOR CORRESPONDING ROUTE MARKERS.
11. WASHERS ON TIMBER POSTS SHALL BE 1 INCH DIAMETER.

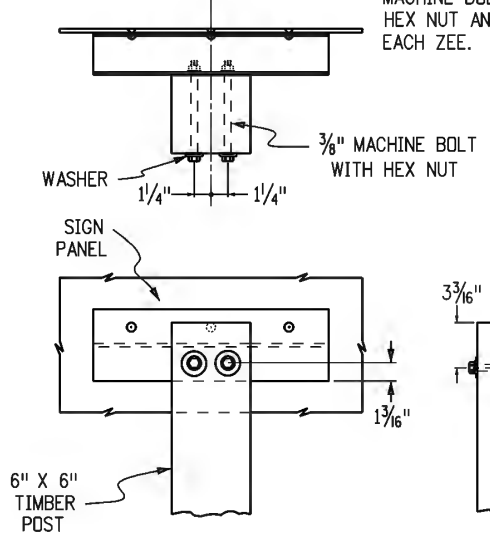


FOR SINGLE POST SIGNS WITH TWO BACKING ZEES, USE ONE 5/8" MACHINE BOLT WITH WASHER AND HEX NUT AND LOCK WASHER AT EACH ZEE.

3/8" 90° COUNTERSUNK ALUMINUM LOCKBOLT FASTENERS (NO. 4 THRU NO. 10 AS REQUIRED). EXPOSED LOCKBOLT FASTENER HEADS ON THE FACE OF THE SIGN SHALL BE REFLECTORIZED TO MATCH THE SURROUNDING COLOR.



CLASS I MARKER ASSEMBLY INSTALLATION



CLASS II MARKER ASSEMBLY INSTALLATION

PANEL COMBINATIONS	ZEE LENGTH
21", 24", 30", 36", 45"	*
24" & 24"	43"
24" & 30"	49"
30" & 30"	55"
36" & 36"	67"
45" & 36"	76"
24" & 24" & 24"	68"
24" & 24" & 30"	74"
24" & 30" & 24"	74"
30" & 24" & 30"	80"
24" & 30" & 30"	80"
30" & 30" & 30"	86"

- NOTES:**
1. HOLE SPACING SHALL BE COUNTED FROM LEFT TO RIGHT LOOKING AT THE BACK OF SIGN WITH FIRST AND LAST HOLES 2-INCHES FROM EDGE OF THE Z-BAR. HOLES IN-BETWEEN SHALL BE 6-INCHES TO 8-INCHES APART.
 2. * Z-BAR LENGTH SHALL BE 3-INCHES (± 1/2-INCH) SHORT OF THE EDGE OF THE SIGN ON BOTH SIDES.
 3. SUPPLEMENTAL PANELS SHALL BE CENTERED RELATIVE TO THE PRIMARY PANELS. Z-BAR LENGTHS FOR SUPPLEMENTAL PANEL GROUPS MAY BE ADJUSTED TO FIT.

Computer File Information

Creation Date: 07/04/12
Created By: Nakao
Last Modification Date:
Last Modified By:
CAD Ver.: MicroStation V8 Scale: Not to Scale Units: English

Sheet Revisions

Date:	Comments

Colorado Department of Transportation

2829 W. Howard Pl.
Denver, CO 80204
Phone: 303-757-9436
FAX: 303-757-9219

Traffic & Safety Engineering MKB

MARKER ASSEMBLY INSTALLATIONS

Issued By: Traffic & Safety Engineering Branch July 31, 2019

STANDARD PLAN NO.

S-614-10

Standard Sheet No. 1 of 1

Project Sheet Number: