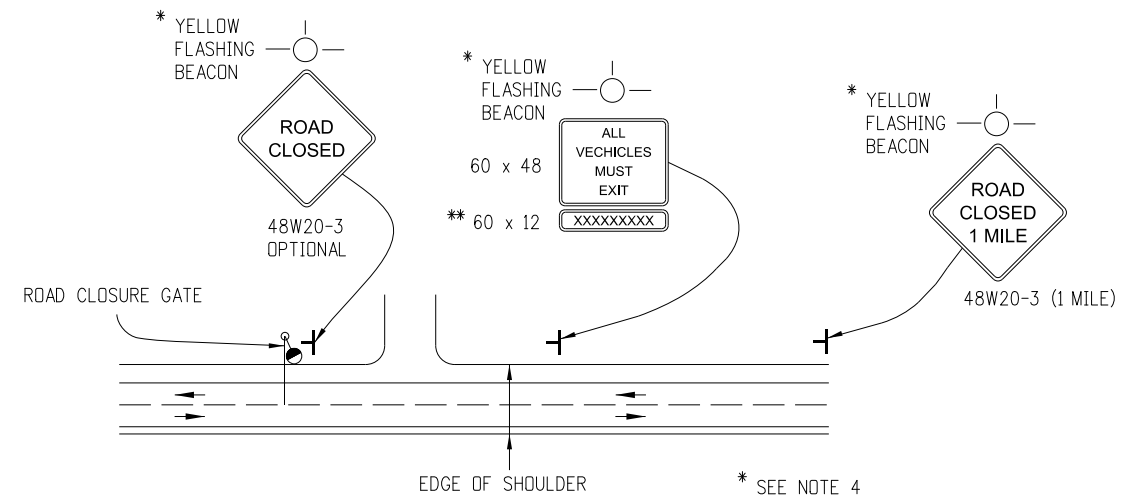
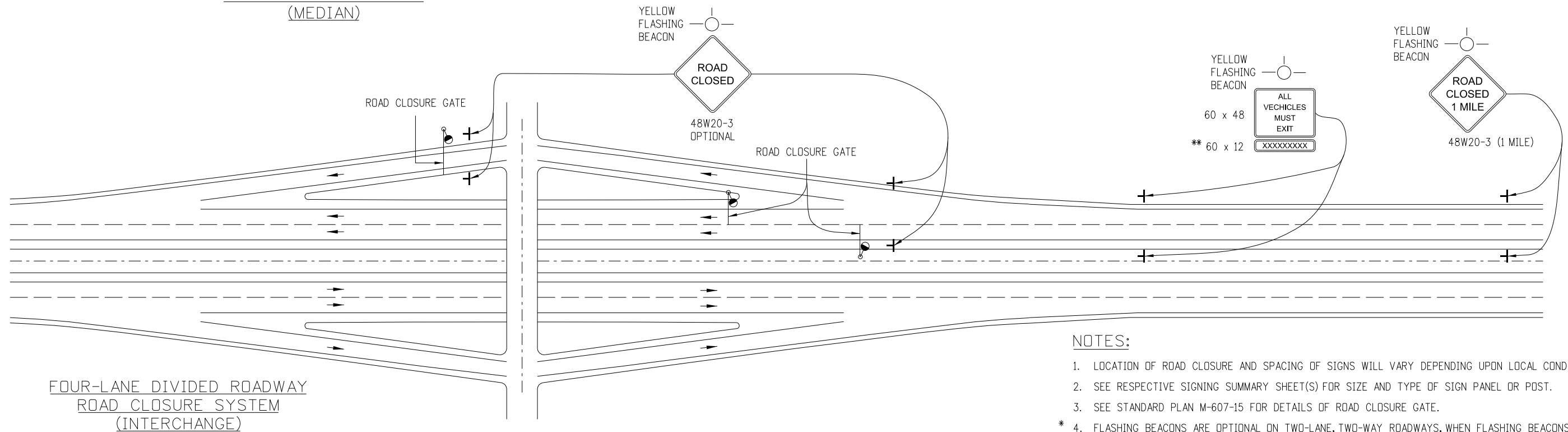


FOUR-LANE DIVIDED ROADWAY
ROAD CLOSURE SYSTEM
(MEDIAN)



TWO-LANE - TWO-WAY ROADWAY
ROAD CLOSURE SYSTEM




FOUR-LANE DIVIDED ROADWAY
ROAD CLOSURE SYSTEM
(INTERCHANGE)

NOTES:

1. LOCATION OF ROAD CLOSURE AND SPACING OF SIGNS WILL VARY DEPENDING UPON LOCAL CONDITIONS.
2. SEE RESPECTIVE SIGNING SUMMARY SHEET(S) FOR SIZE AND TYPE OF SIGN PANEL OR POST.
3. SEE STANDARD PLAN M-607-15 FOR DETAILS OF ROAD CLOSURE GATE.
- * 4. FLASHING BEACONS ARE OPTIONAL ON TWO-LANE, TWO-WAY ROADWAYS, WHEN FLASHING BEACONS ARE NOT USED. ORANGE FLAGS MAY BE USED TO CALL ATTENTION TO THE SIGN.
- ** 5. MESSAGE SHALL IDENTIFY LAST AVAILABLE EXIT. (OPTIONAL)
6. ALL SIGNS SHALL BE MOUNTED ON SWIVELS TO FACE AWAY FROM TRAFFIC WHEN NOT IN USE.

Computer File Information	
Creation Date: 10/06/06	Initials: KCM
Last Modification Date: 10/06/06	Initials: LTA
Full Path: www.coloradodot.info/library/traffic/traffic-s-standard-plans	
Drawing File Name: DS-630-04 (1of1).dgn	
CAD Ver.: MicroStation V8 Scale: Not to Scale Units: English	

Sheet Revisions	
Date:	Comments
(R-X)	
(R-X)	
(R-X)	
(R-X)	

Colorado Department of Transportation

 4201 East Arkansas Avenue
 Denver, Colorado 80222
 Phone: (303) 757-9543
 Fax: (303) 757-9820
 Project Development Branch KCM/LTA

**ROAD CLOSURE GATE
SIGNING DETAILS**
 Issued By: Traffic Engineering Unit October 28, 2002

PROJECT DETAIL NO.
 DS-630-4
 Sheet No. 1 of 1