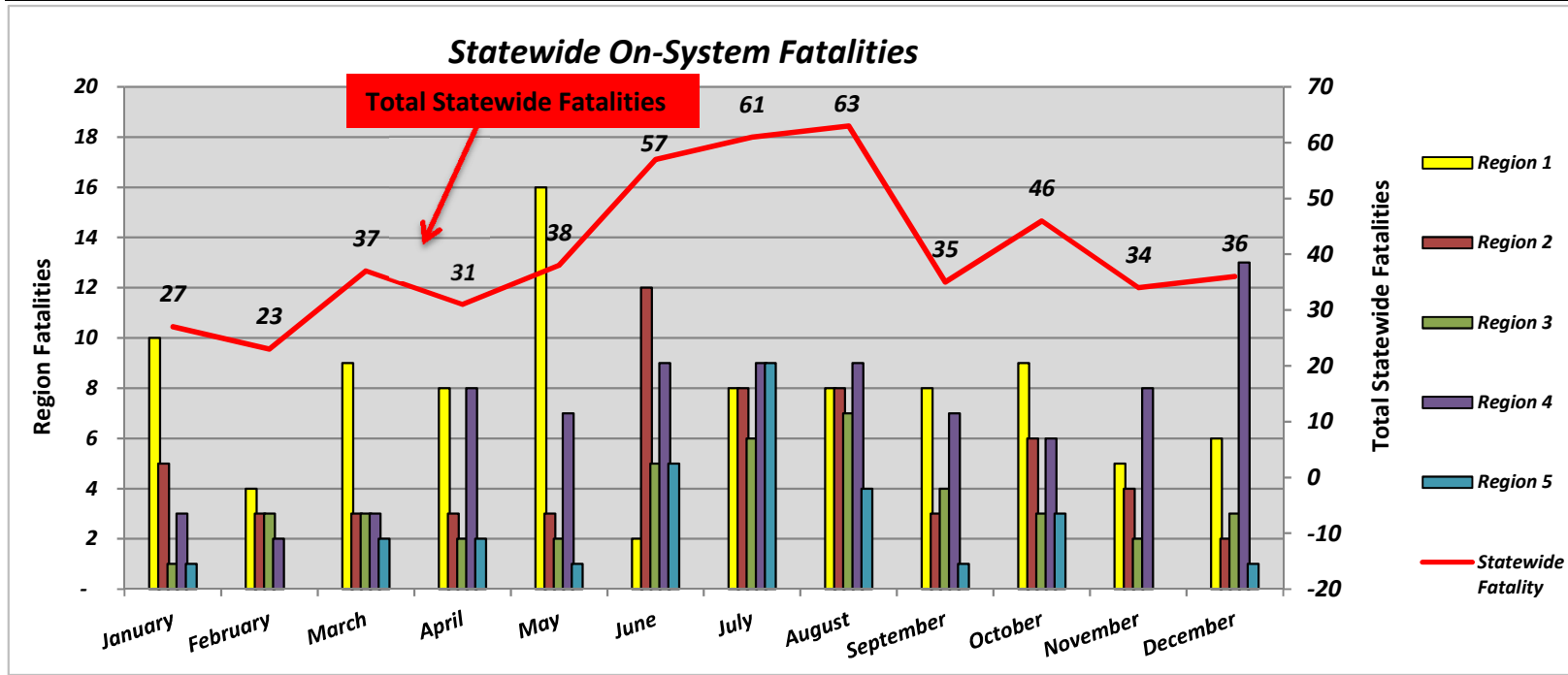


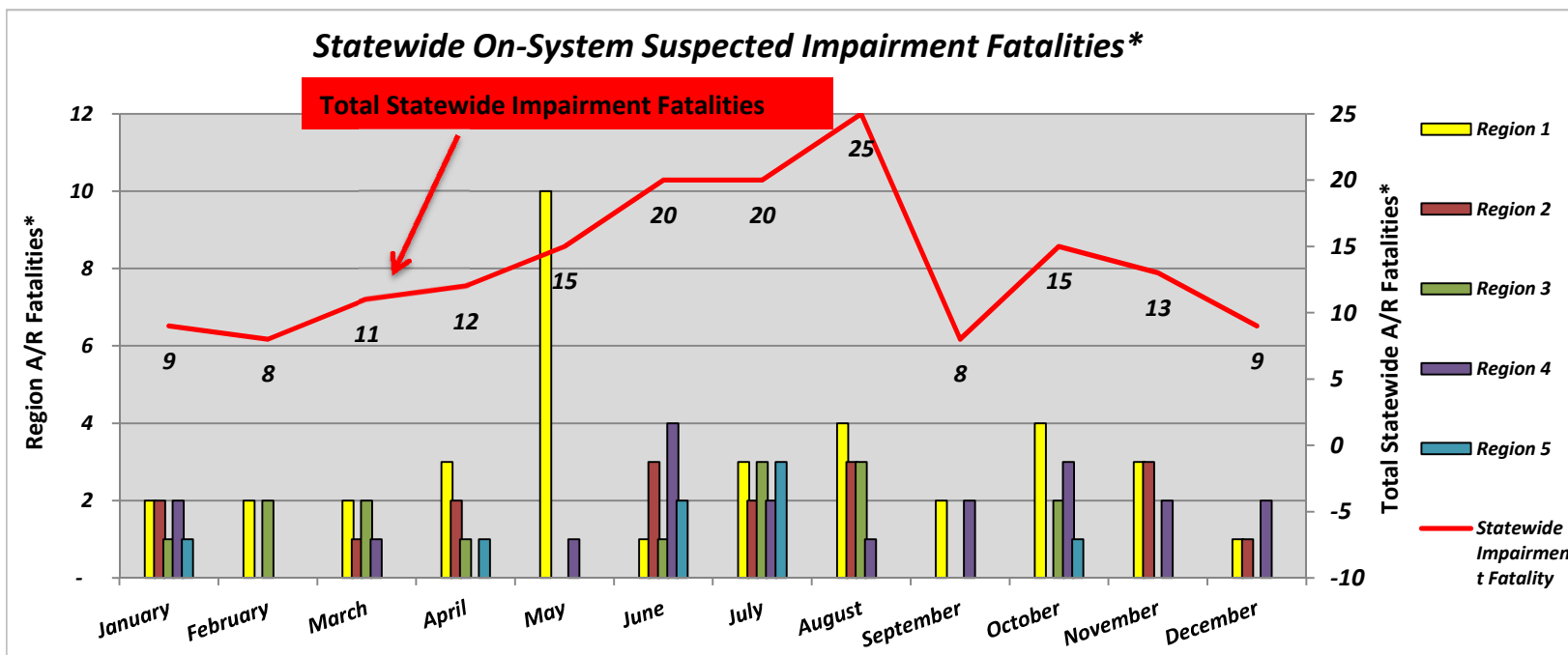
2014 Fatalities

Statewide Fatalities											
Crash Month	Region 1		Region 2		Region 3		Region 4		Region 5		Statewide Fatalities
	On-System	Off-System	On-System	Off-System	On-System	Off-System	On-System	Off-System	On-System	Off-System	
January	10	5	5	1	1	-	3	1	1	-	27
February	4	5	3	3	3	1	2	2	-	-	23
March	9	2	3	4	3	2	3	9	2	-	37
April	8	4	3	1	2	2	8	1	2	-	31
May	16	2	3	4	2	1	7	2	1	-	38
June	2	12	12	5	5	1	9	6	5	-	57
July	8	7	8	5	6	1	9	6	9	2	61
August	8	10	8	8	7	2	9	7	4	-	63
September	8	5	3	4	4	-	7	3	1	-	35
October	9	8	6	3	3	2	6	6	3	-	46
November	5	8	4	3	2	1	8	-	-	3	34
December	6	6	2	1	3	1	13	1	1	2	36
Total	93	74	60	42	41	14	84	44	29	7	488



2014 Fatalities

Statewide Suspected Impairment Fatalities*											
Crash Month	Region 1		Region 2		Region 3		Region 4		Region 5		Statewide Impairment Fatalities
	On-System	Off-System	On-System	Off-System	On-System	Off-System	On-System	Off-System	On-System	Off-System	
January	2	1	2	-	1	-	2	-	1	-	9
February	2	2	-	1	2	1	-	-	-	-	8
March	2	-	1	1	2	1	1	3	-	-	11
April	3	4	2	-	1	1	-	-	1	-	12
May	10	-	-	2	-	-	1	2	-	-	15
June	1	4	3	2	1	1	4	2	2	-	20
July	3	1	2	4	3	-	2	2	3	-	20
August	4	4	3	6	3	1	1	3	-	-	25
September	2	2	-	2	-	-	2	-	-	-	8
October	4	4	-	-	2	-	3	1	1	-	15
November	3	3	3	1	-	-	2	-	-	1	13
December	1	3	1	-	-	-	2	-	-	2	9
Total	37	28	17	19	15	5	20	13	8	3	165



*Preliminary (as of the date of this Report, subject to confirmation by Toxicology Report by the State's Coroners)