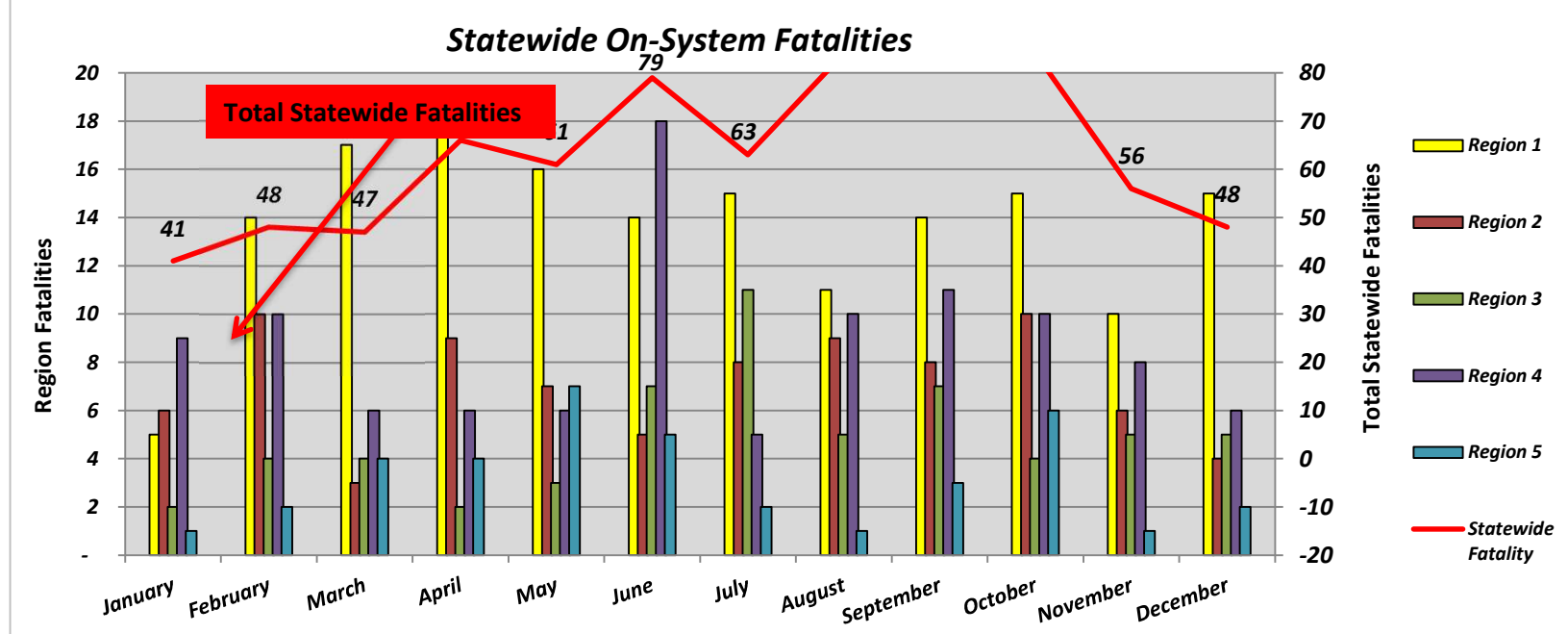
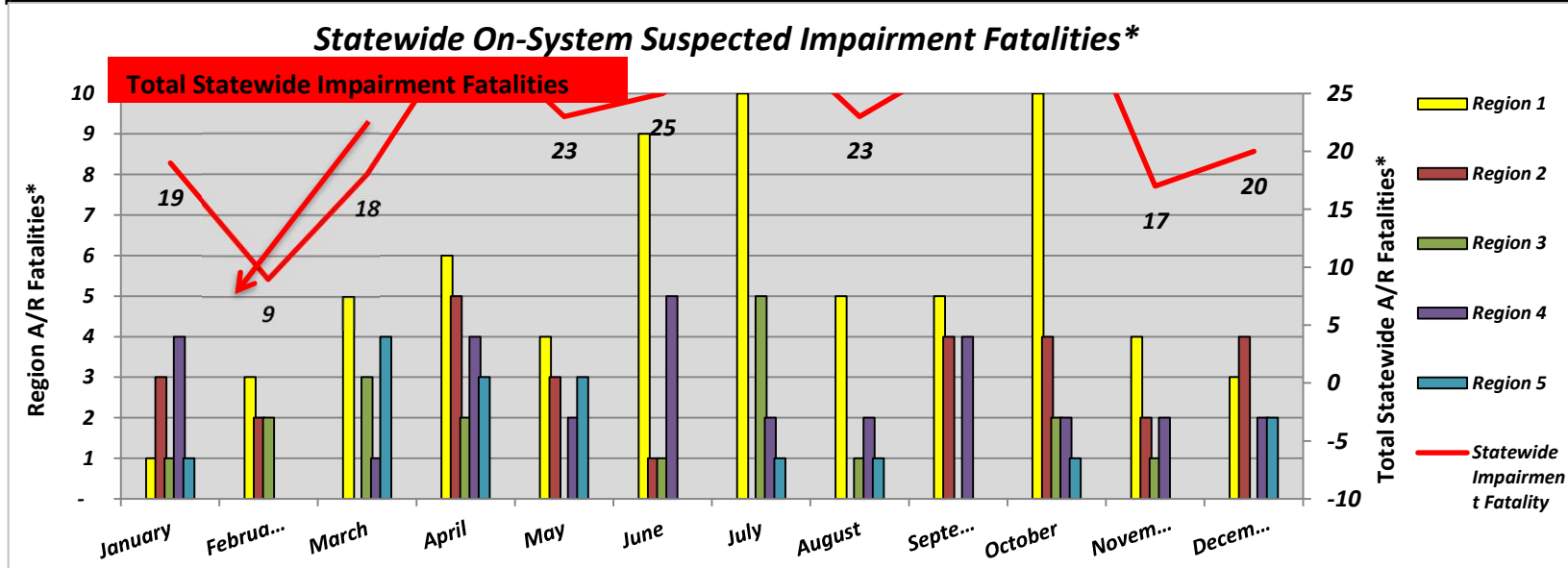


Statewide Fatalities											
Crash Month	Region 1		Region 2		Region 3		Region 4		Region 5		Statewide Fatalities
	On-System	Off-System	On-System	Off-System	On-System	Off-System	On-System	Off-System	On-System	Off-System	
January	5	11	6	5	2	1	9	-	1	1	41
February	14	6	10	1	4	-	10	1	2	-	48
March	17	5	3	4	4	1	6	2	4	1	47
April	18	10	9	9	2	2	6	4	4	2	66
May	16	11	7	6	3	1	6	2	7	2	61
June	14	12	5	7	7	2	18	7	5	2	79
July	15	10	8	4	11	3	5	2	2	3	63
August	11	20	9	11	5	5	10	11	1	1	84
September	14	18	8	10	7	3	11	10	3	3	87
October	15	20	10	13	4	1	10	4	6	1	84
November	10	13	6	5	5	2	8	6	1	-	56
December	15	6	4	4	5	1	6	4	2	1	48
Total	164	142	85	79	59	22	105	53	38	17	764



Statewide Suspected Impairment Fatalities*											
Crash Month	Region 1		Region 2		Region 3		Region 4		Region 5		Statewide Impairment Fatalities
	On-System	Off-System	On-System	Off-System	On-System	Off-System	On-System	Off-System	On-System	Off-System	
January	1	6	3	3	1	-	4	-	1	-	19
February	3	2	2	-	2	-	-	-	-	-	9
March	5	-	-	4	3	-	1	-	4	1	18
April	6	3	5	4	2	1	4	2	3	1	31
May	4	5	3	5	-	-	2	-	3	1	23
June	9	4	1	-	1	-	5	4	-	1	25
July	10	5	-	3	5	1	2	1	1	3	31
August	5	4	-	2	1	3	2	4	1	1	23
September	5	6	4	2	-	2	4	5	-	-	28
October	10	10	4	4	2	1	2	2	1	1	37
November	4	3	2	-	1	2	2	3	-	-	17
December	3	2	4	1	-	4	2	1	2	1	20
Total	65	50	28	28	18	14	30	22	16	10	281



*Preliminary (as of the date of this Report, subject to confirmation by Toxicology Report by the State's Coroners)