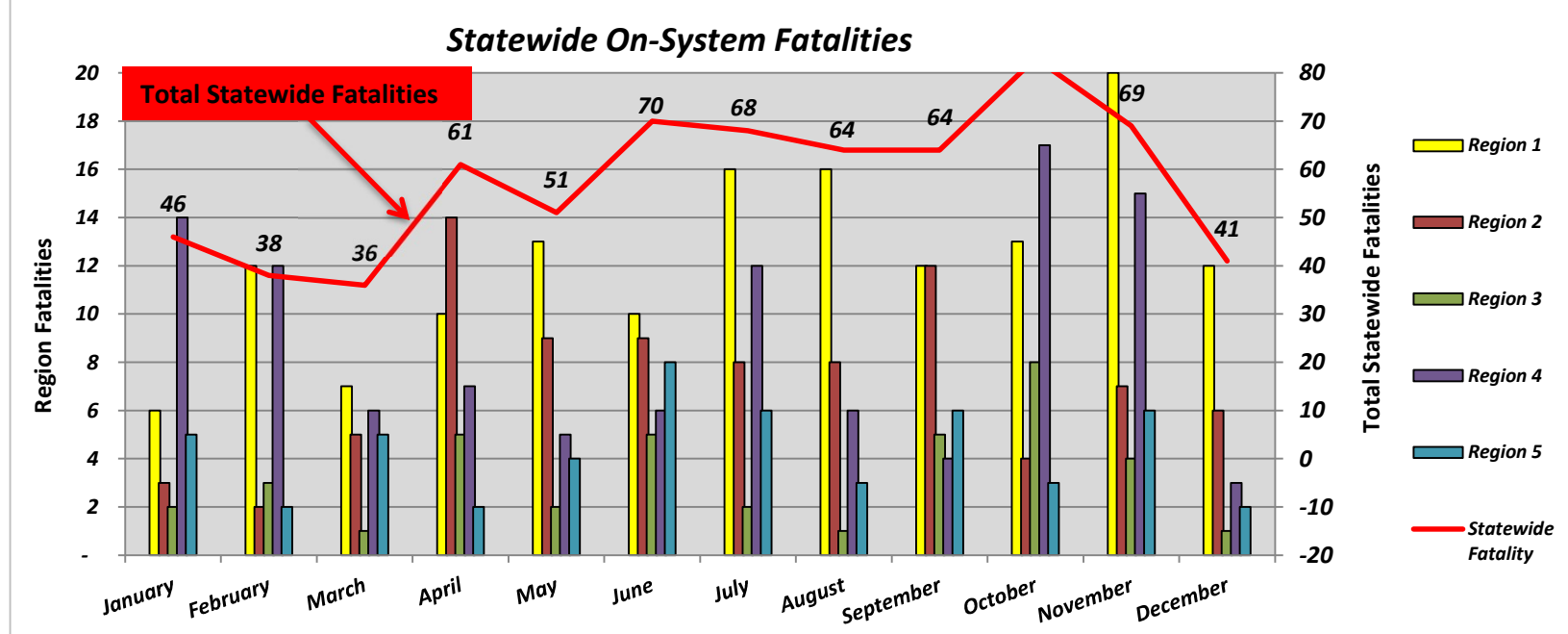
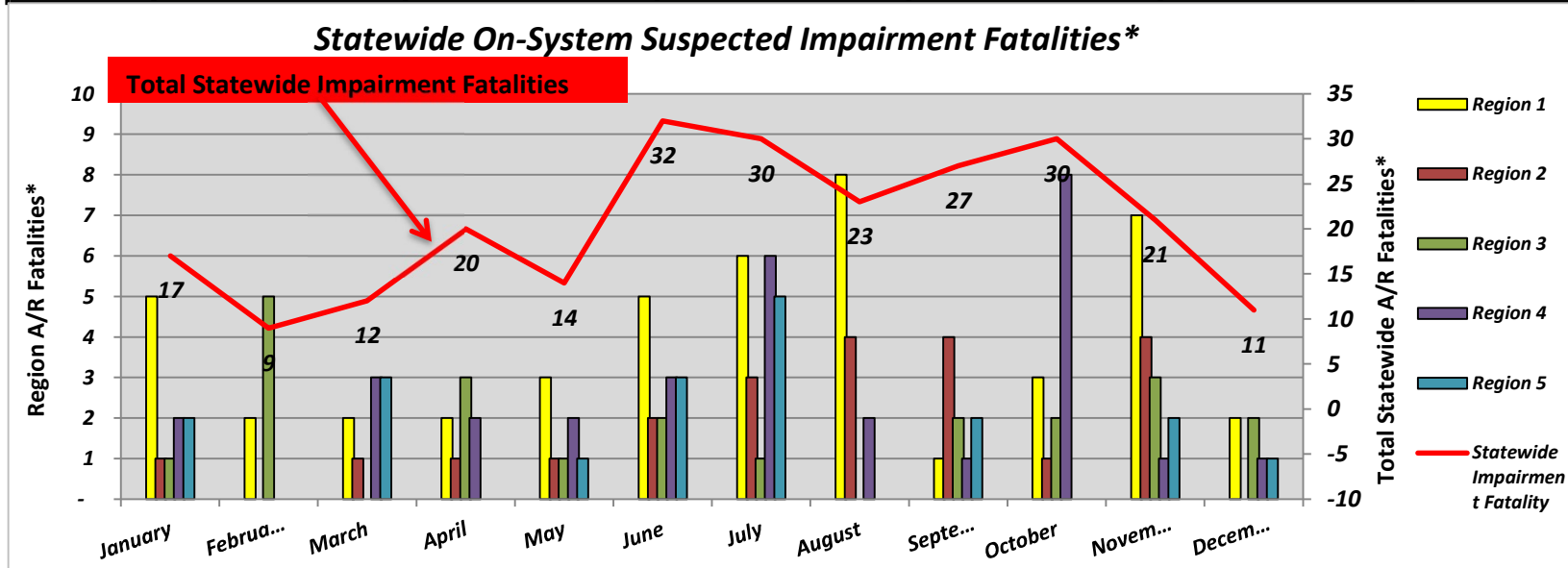


Statewide Fatalities											
Crash Month	Region 1		Region 2		Region 3		Region 4		Region 5		Statewide Fatalities
	On-System	Off-System	On-System	Off-System	On-System	Off-System	On-System	Off-System	On-System	Off-System	
January	6	10	3	4	2	-	14	1	5	1	46
February	12	3	2	3	3	-	12	1	2	-	38
March	7	8	5	3	1	-	6	1	5	-	36
April	10	10	14	5	5	-	7	7	2	1	61
May	13	8	9	1	2	3	5	6	4	-	51
June	10	12	9	9	5	3	6	7	8	1	70
July	16	12	8	5	2	2	12	4	6	1	68
August	16	16	8	9	1	1	6	2	3	2	64
September	12	12	12	5	5	2	4	6	6	-	64
October	13	19	4	7	8	2	17	7	3	3	83
November	20	8	7	3	4	1	15	5	6	-	69
December	12	8	6	5	1	2	3	2	2	-	41
Total	147	126	87	59	39	16	107	49	52	9	691



Statewide Suspected Impairment Fatalities*											
Crash Month	Region 1		Region 2		Region 3		Region 4		Region 5		Statewide Impairment Fatalities
	On-System	Off-System	On-System	Off-System	On-System	Off-System	On-System	Off-System	On-System	Off-System	
January	5	4	1	2	1	-	2	-	2	-	17
February	2	1	-	-	5	1	-	-	-	-	9
March	2	3	1	-	-	-	3	-	3	-	12
April	2	5	1	4	3	-	2	2	-	1	20
May	3	5	1	-	1	1	2	-	1	-	14
June	5	7	2	6	2	2	3	2	3	-	32
July	6	7	3	1	1	-	6	1	5	-	30
August	8	4	4	1	-	1	2	2	-	1	23
September	1	9	4	4	2	2	1	2	2	-	27
October	3	6	1	5	2	2	8	2	-	1	30
November	7	-	4	2	3	1	1	1	2	-	21
December	2	1	-	2	2	2	1	-	1	-	11
Total	46	52	22	27	22	12	31	12	19	3	246



*Preliminary (as of the date of this Report, subject to confirmation by Toxicology Report by the State's Coroners)