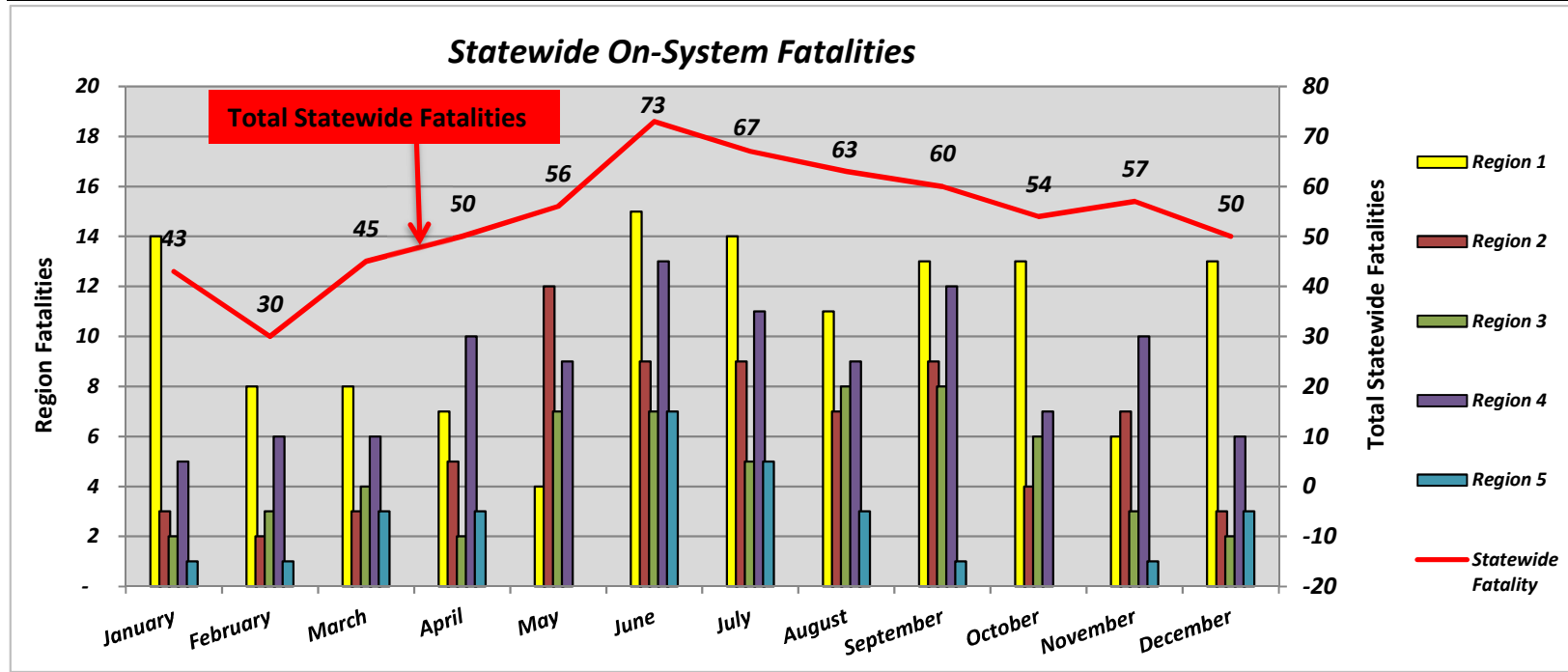


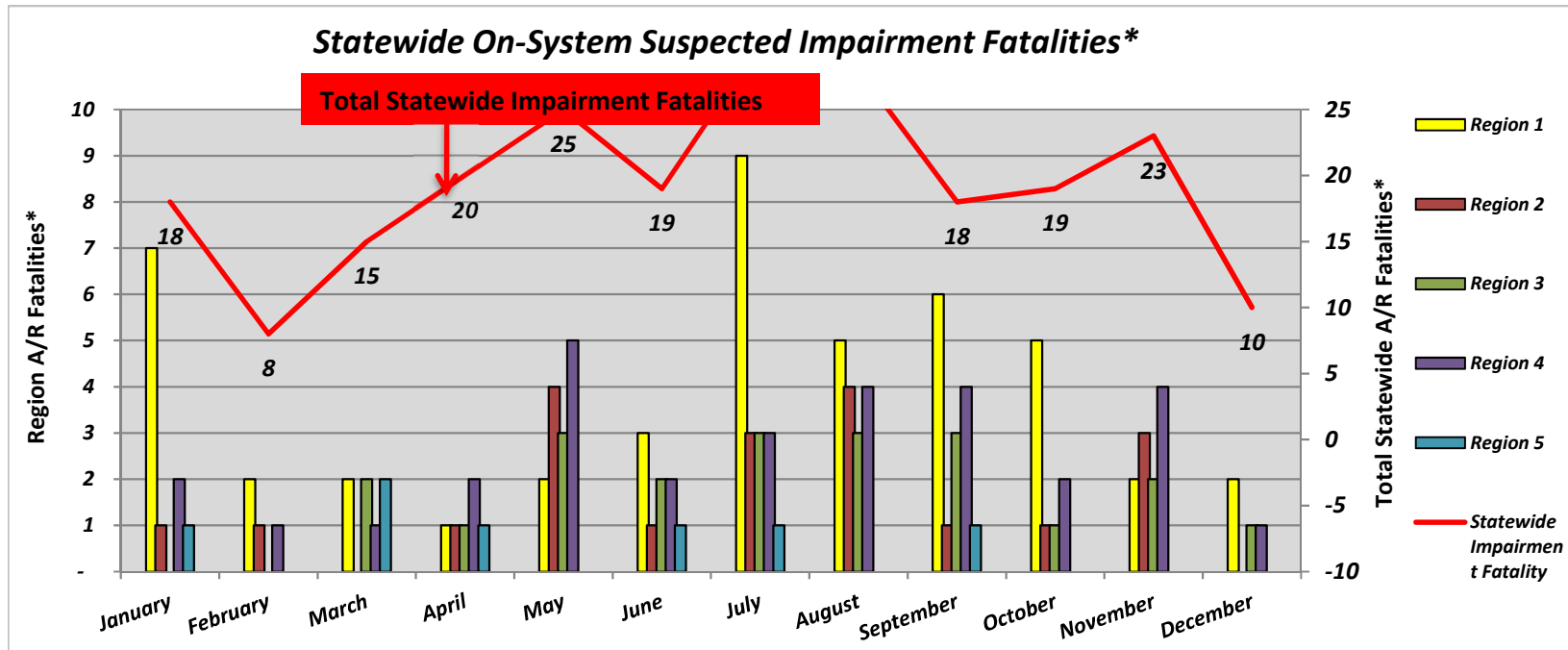
# 2017 Fatalities by Region

Statewide Fatalities											
Crash Month	Region 1		Region 2		Region 3		Region 4		Region 5		Statewide Fatalities
	On-System	Off-System	On-System	Off-System	On-System	Off-System	On-System	Off-System	On-System	Off-System	
January	14	10	3	3	2	1	5	3	1	1	43
February	8	5	2	2	3	-	6	3	1	-	30
March	8	6	3	11	4	-	6	3	3	1	45
April	7	8	5	4	2	2	10	7	3	2	50
May	4	5	12	6	7	4	9	8	-	1	56
June	15	7	9	6	7	2	13	6	7	1	73
July	14	10	9	7	5	2	11	4	5	-	67
August	11	11	7	7	8	4	9	2	3	1	63
September	13	8	9	3	8	2	12	4	1	-	60
October	13	8	4	5	6	3	7	8	-	-	54
November	6	9	7	11	3	-	10	10	1	-	57
December	13	12	3	6	2	1	6	4	3	-	50
<b>Total</b>	<b>126</b>	<b>99</b>	<b>73</b>	<b>71</b>	<b>57</b>	<b>21</b>	<b>104</b>	<b>62</b>	<b>28</b>	<b>7</b>	<b>648</b>



# 2017 Fatalities by Region

Statewide Suspected Impairment Fatalities*											
Crash Month	Region 1		Region 2		Region 3		Region 4		Region 5		Statewide Impairment Fatalities
	On-System	Off-System	On-System	Off-System	On-System	Off-System	On-System	Off-System	On-System	Off-System	
January	7	5	1	-	-	1	2	1	1	-	18
February	2	2	1	-	-	2	1	-	-	-	8
March	2	1	-	5	2	-	1	1	2	1	15
April	1	6	1	2	1	2	2	2	1	2	20
May	2	3	4	2	3	2	5	3	-	1	25
June	3	3	1	2	2	1	2	3	1	1	19
July	9	5	3	4	3	1	3	1	1	-	30
August	5	5	4	3	3	3	4	1	-	-	28
September	6	2	1	-	3	-	4	1	1	-	18
October	5	2	1	1	1	2	2	5	-	-	19
November	2	4	3	4	2	-	4	4	-	-	23
December	2	4	-	1	1	1	1	-	-	-	10
<b>Total</b>	<b>46</b>	<b>42</b>	<b>20</b>	<b>24</b>	<b>21</b>	<b>15</b>	<b>31</b>	<b>22</b>	<b>7</b>	<b>5</b>	<b>233</b>



\*Preliminary (as of the date of this Report, subject to confirmation by Toxicology Report by the State's Coroners)