

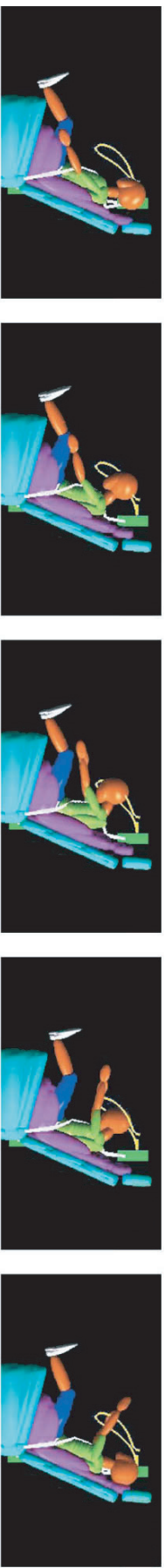
Restraint of a 6-year-old Child in a Motor Vehicle Crash: Booster Seat vs. Lap Belt



Key Safety Message

Children who have outgrown child safety seats with internal harnesses should be properly restrained in a belt-positioning booster seat until they are at least 8 years old, unless they are 4'9" tall.

Correct Restraint—This simulation below shows how a 6-year-old child properly restrained in a belt-positioning booster seat barely moves during a 35 m.p.h. crash.



Incorrect Restraint—The same child, improperly restrained in an adult seat belt with the shoulder belt behind the back*, is thrown forward dramatically in the same crash. The inappropriate fit of the seat belt and lack of upper body restraint puts the child at risk for severe head, spine and abdominal injury.



**Placing the shoulder belt behind the back is a common and dangerous mistake children make when the shoulder belt doesn't fit properly.*