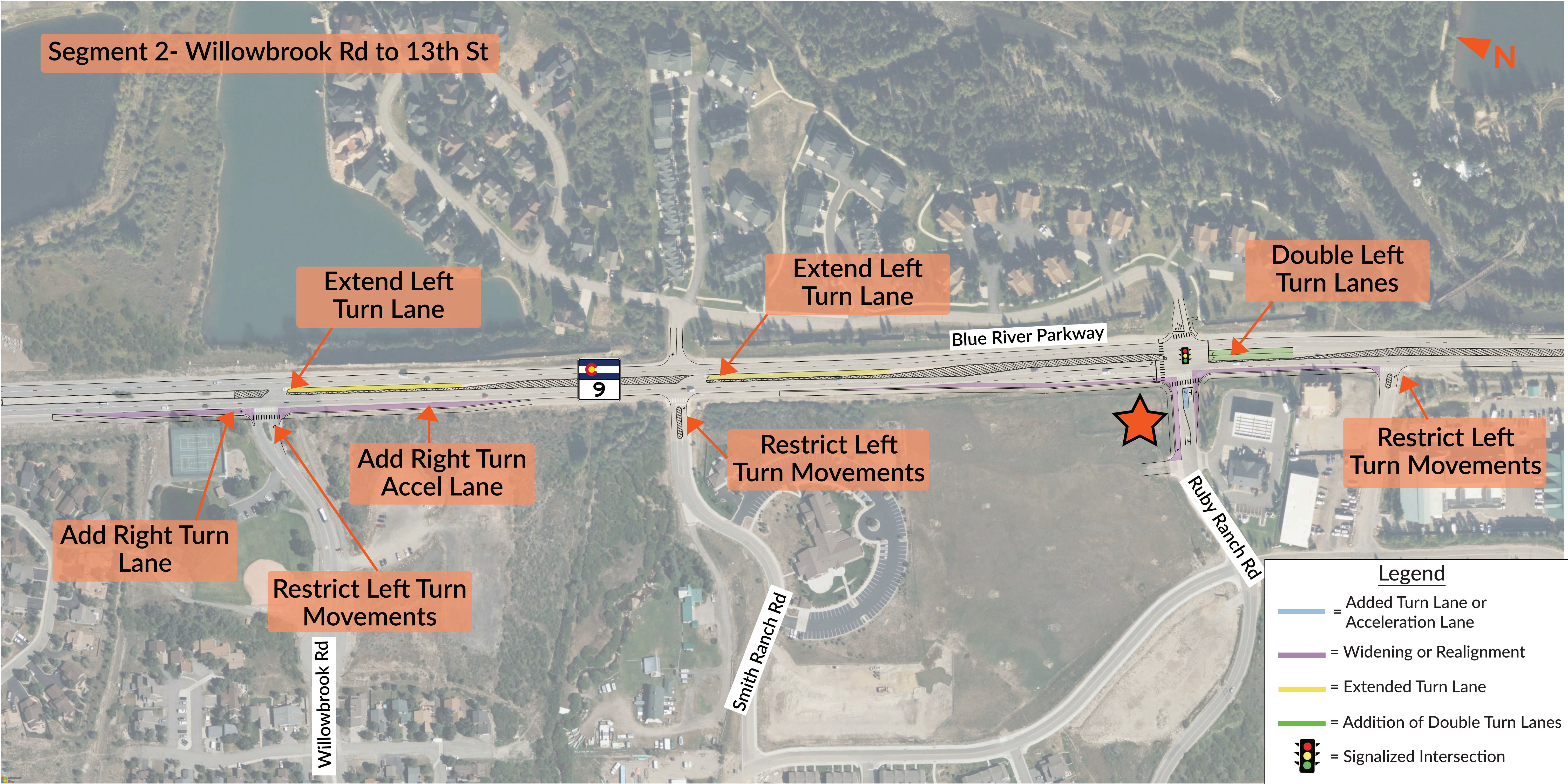


Strategy 2: Access Management Improvements



*If safety or operational issues arise at Bald Eagle Rd or Golden Eagle Rd, implement Phase 2 by restricting turning movements as shown

Strategy 2: Access Management Improvements



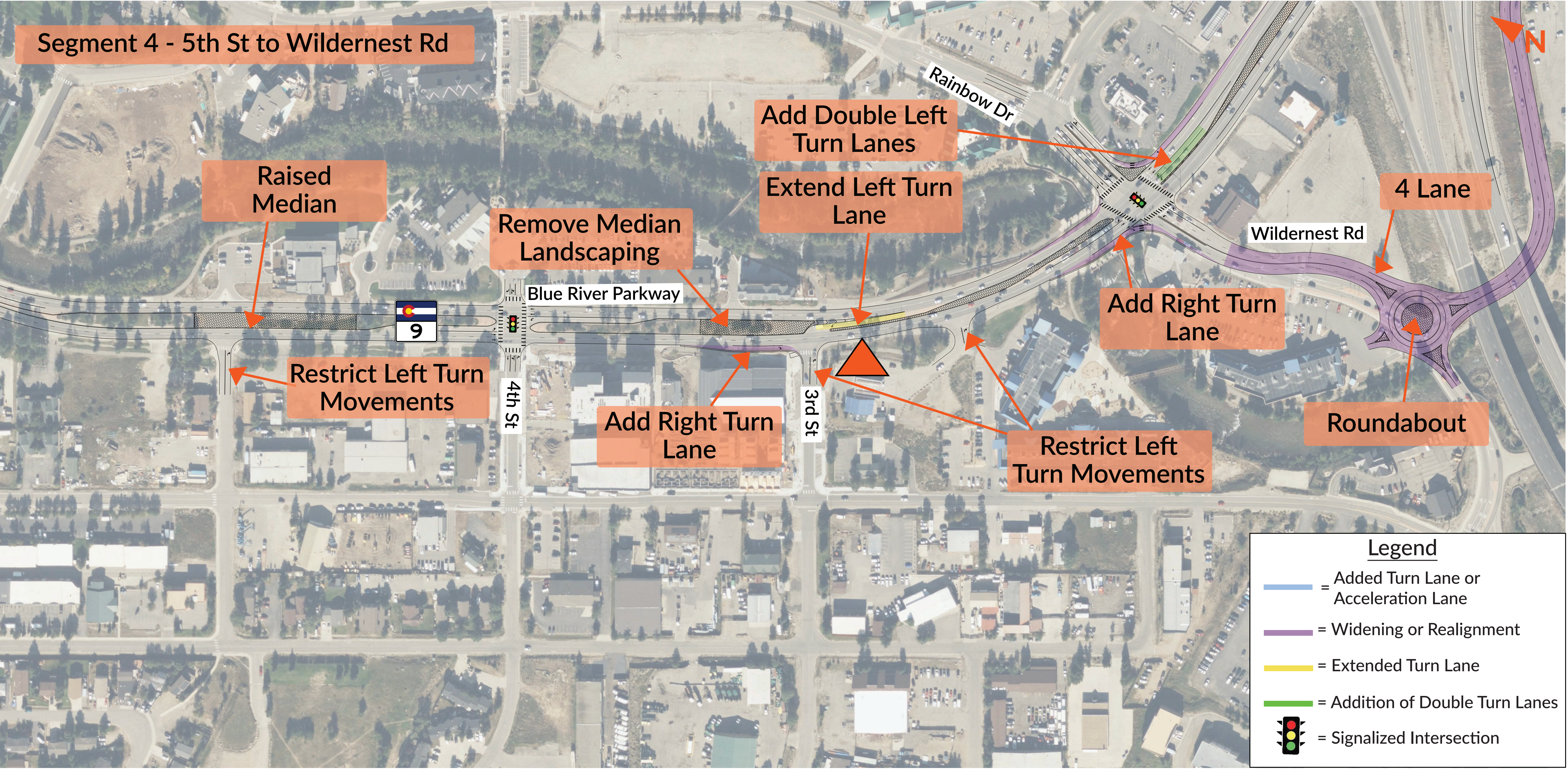
★ = Improvement completed or in design (Ruby Ranch Road Signal)

Strategy 2: Access Management Improvements



★ = Improvement completed or in design (Annie Rd and 6th St Improvements)

Strategy 2: Access Management Improvements



 = Pursuing funding for construction (3rd Street Median Improvements)