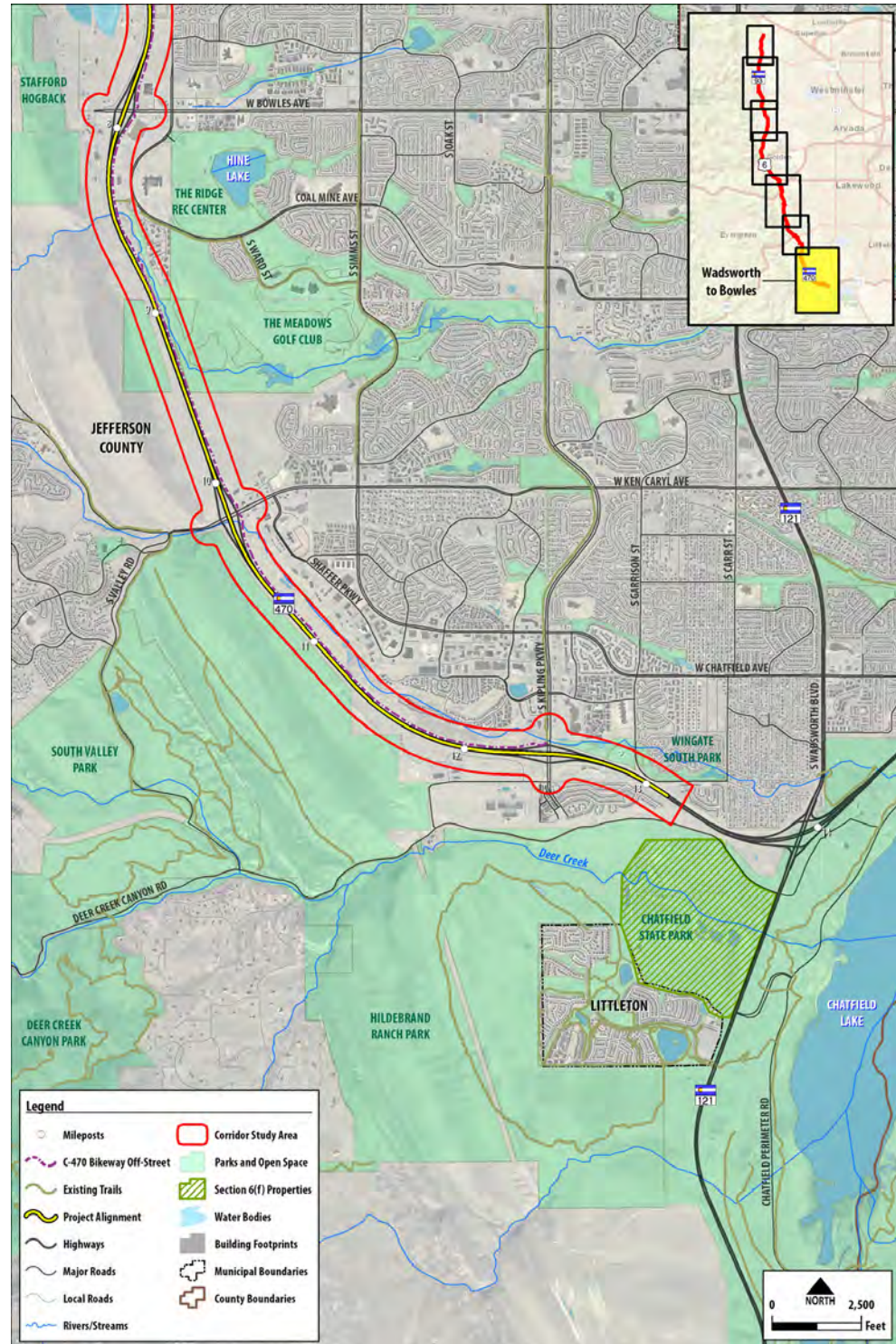




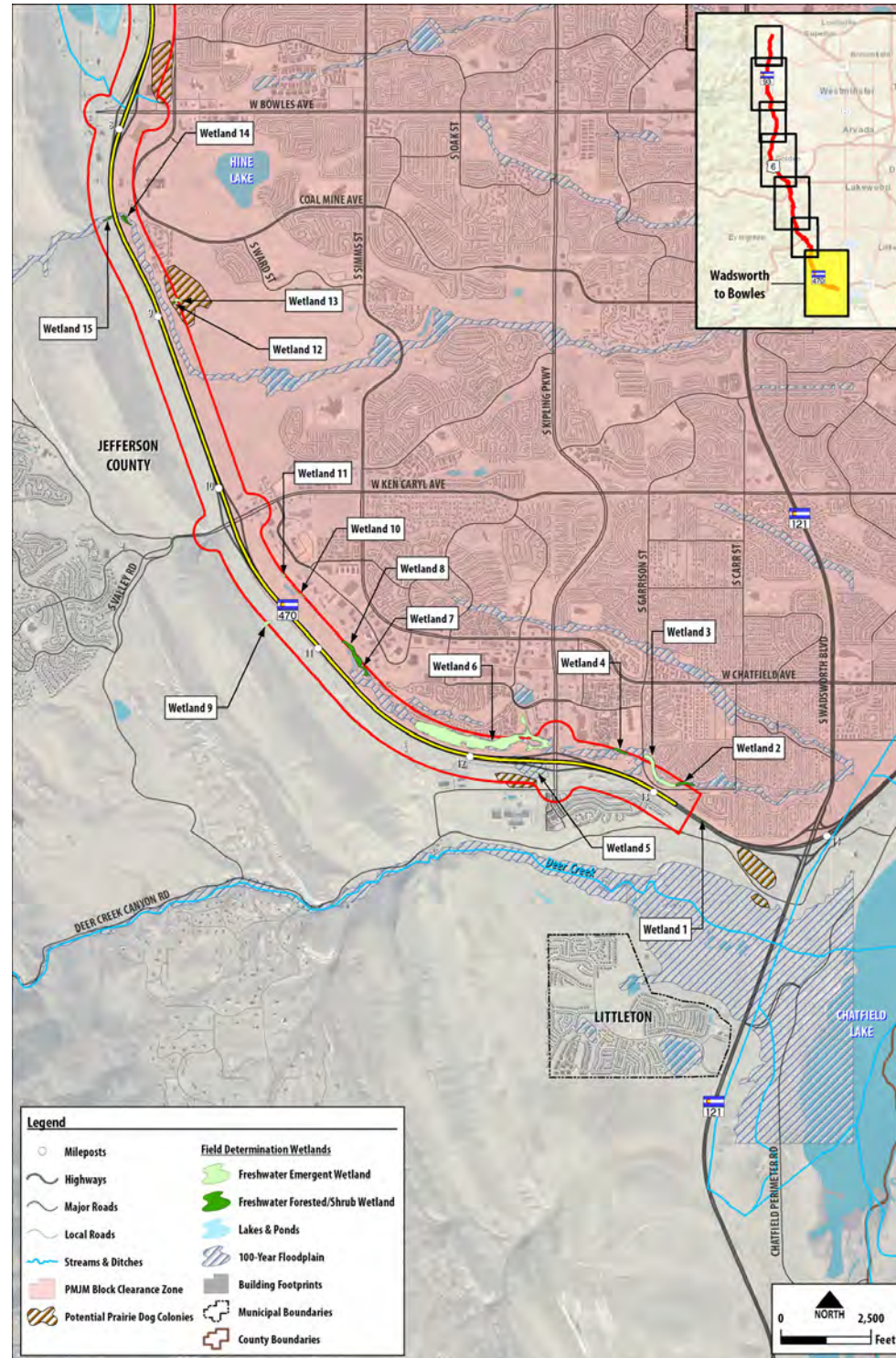
EXISTING ENVIRONMENTAL RESOURCES - WADSWORTH TO BOWLES

WestConnect Coalition PEL

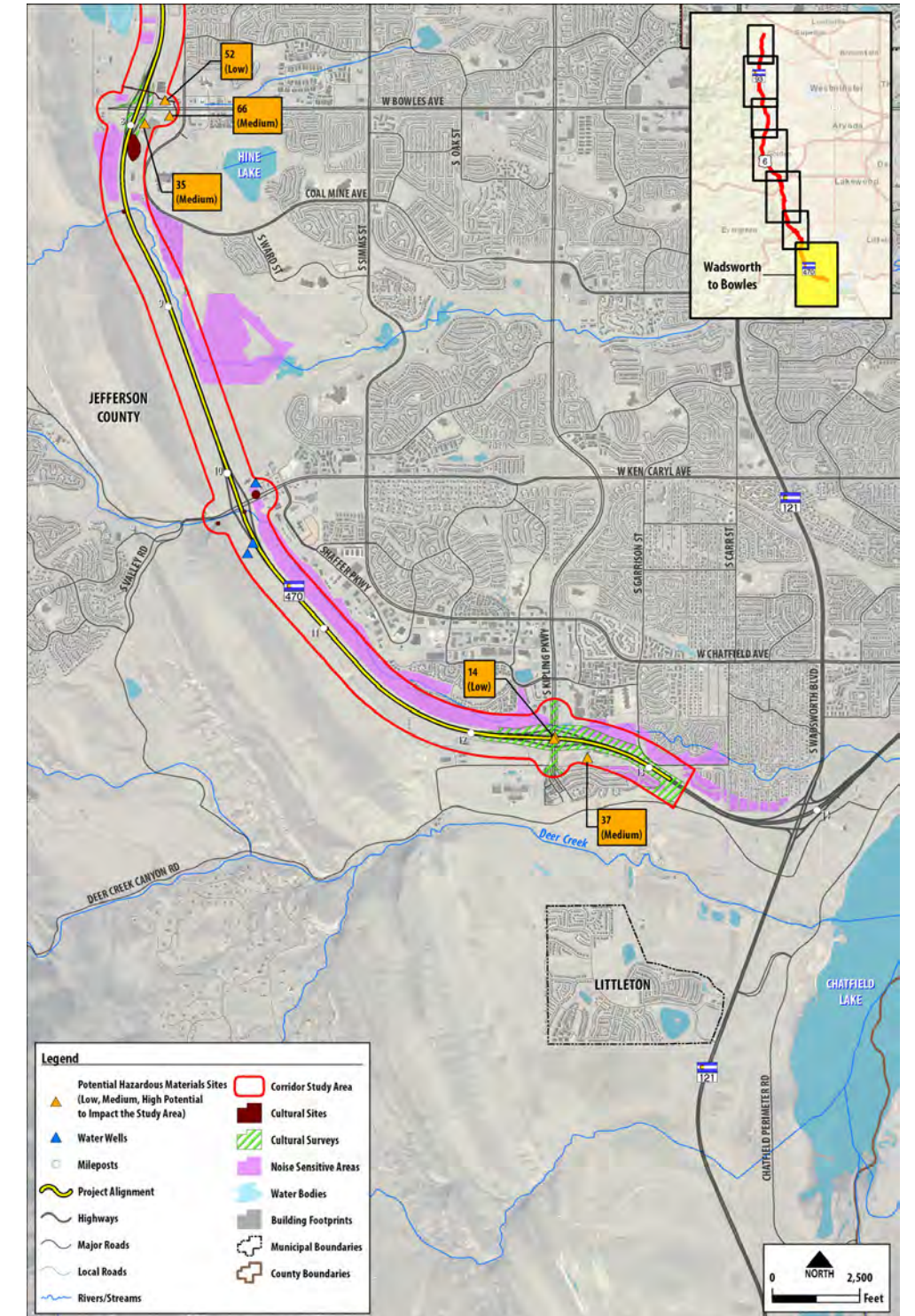
Parks and Recreation and Trails



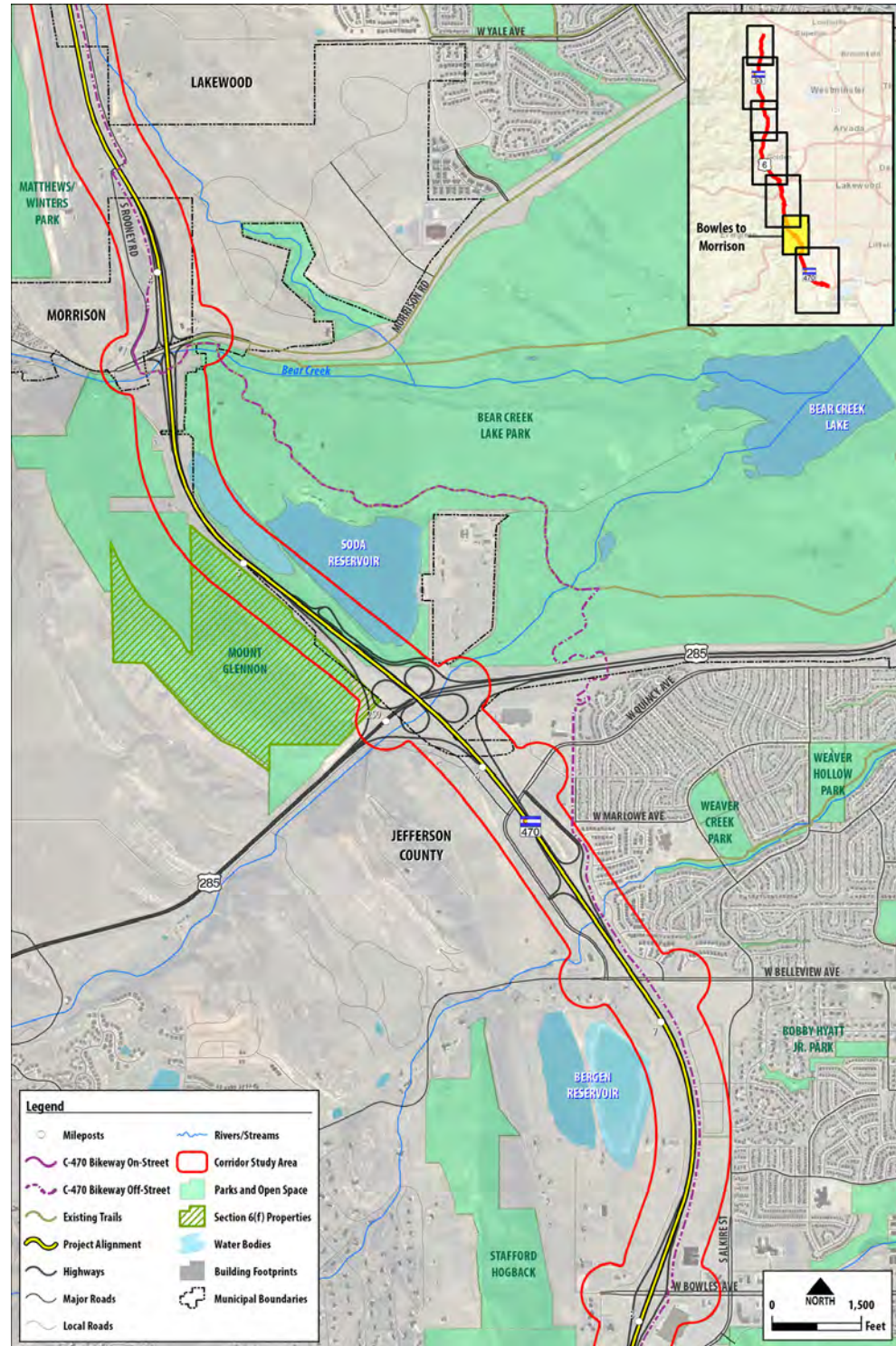
Threatened and Endangered Species and Wetlands



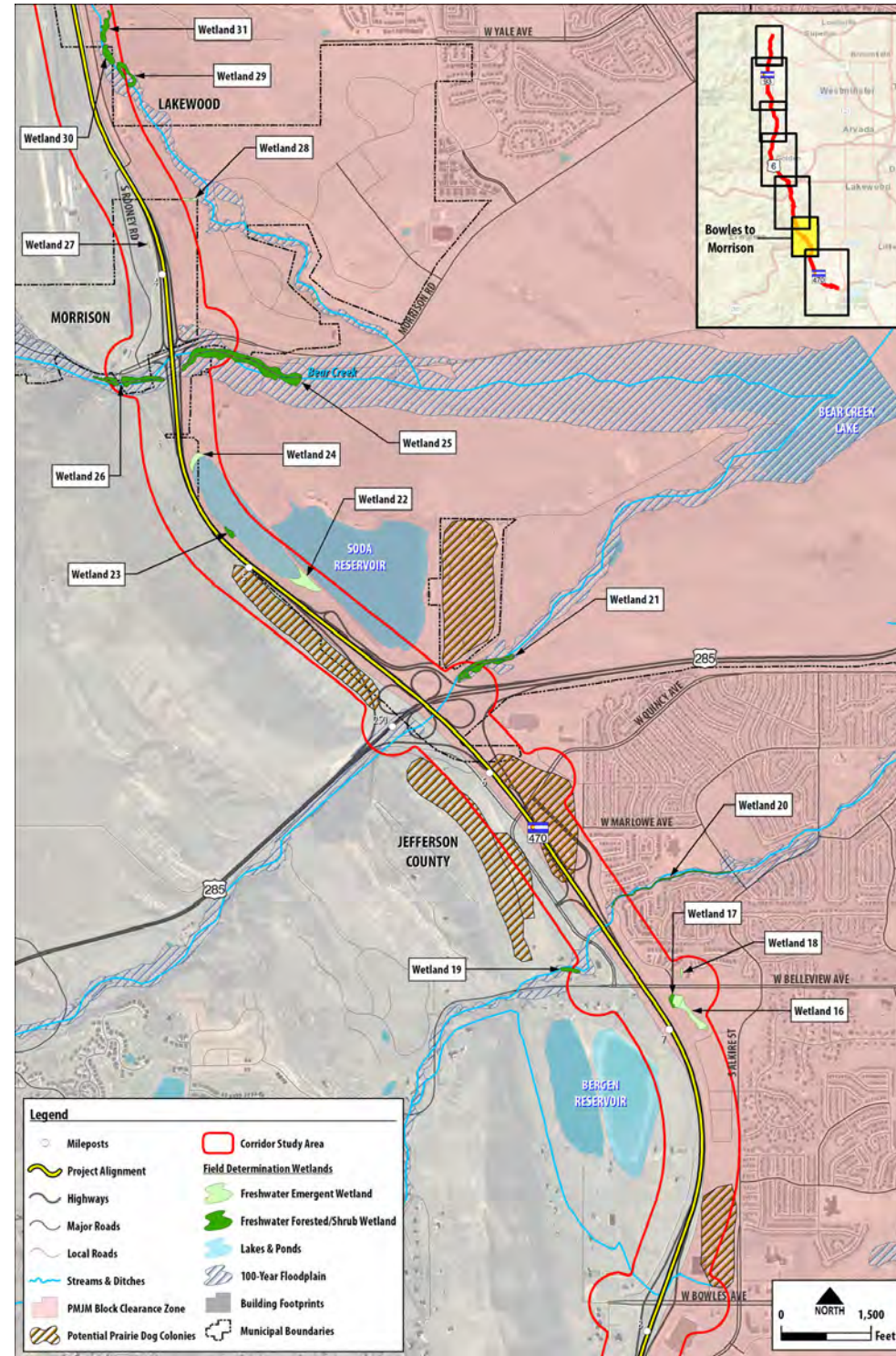
Hazardous Materials, Wells, Cultural Sites and Noise



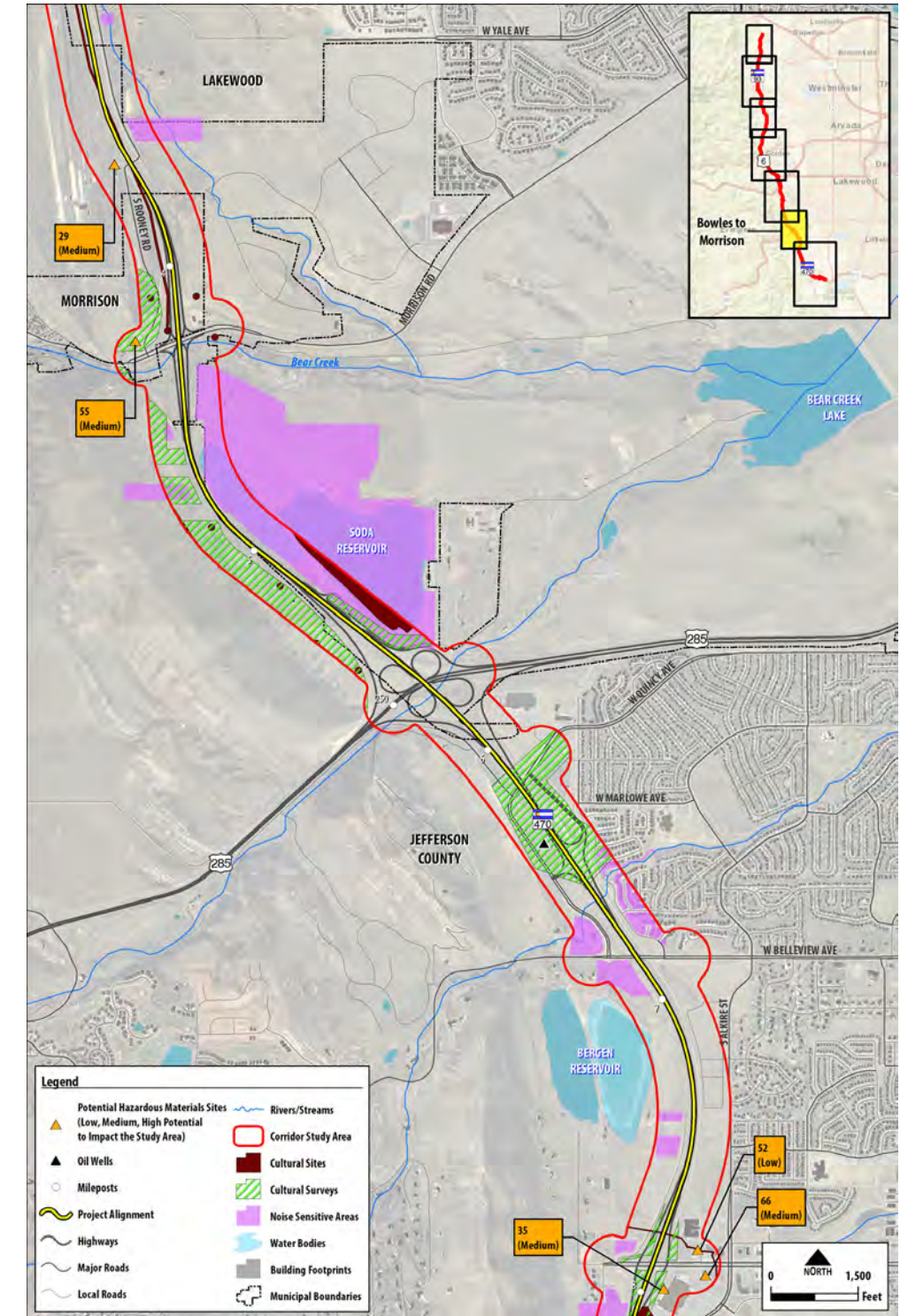
Parks and Recreation and Trails



Threatened and Endangered Species and Wetlands



Hazardous Materials, Wells, Cultural Sites and Noise

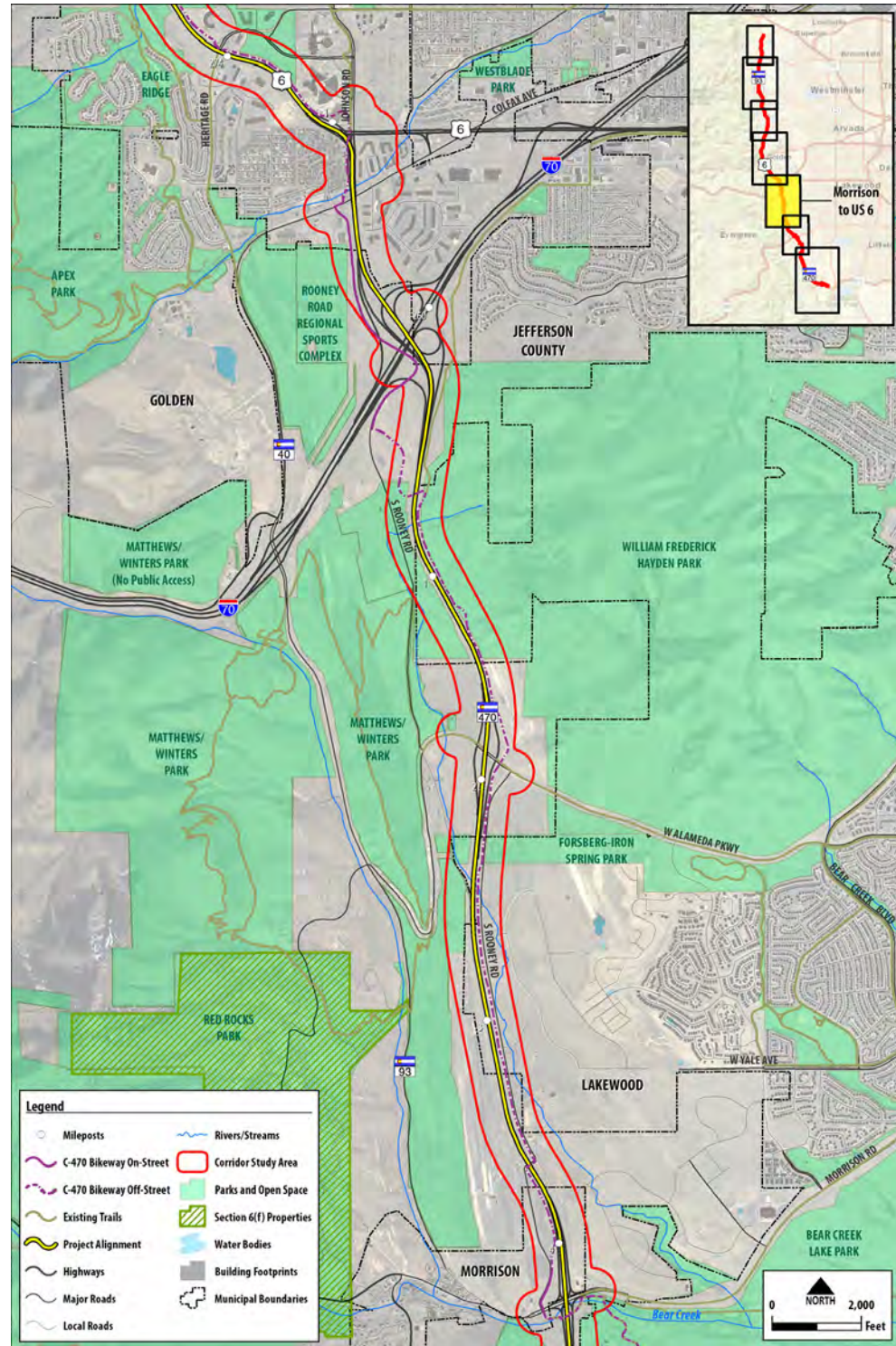




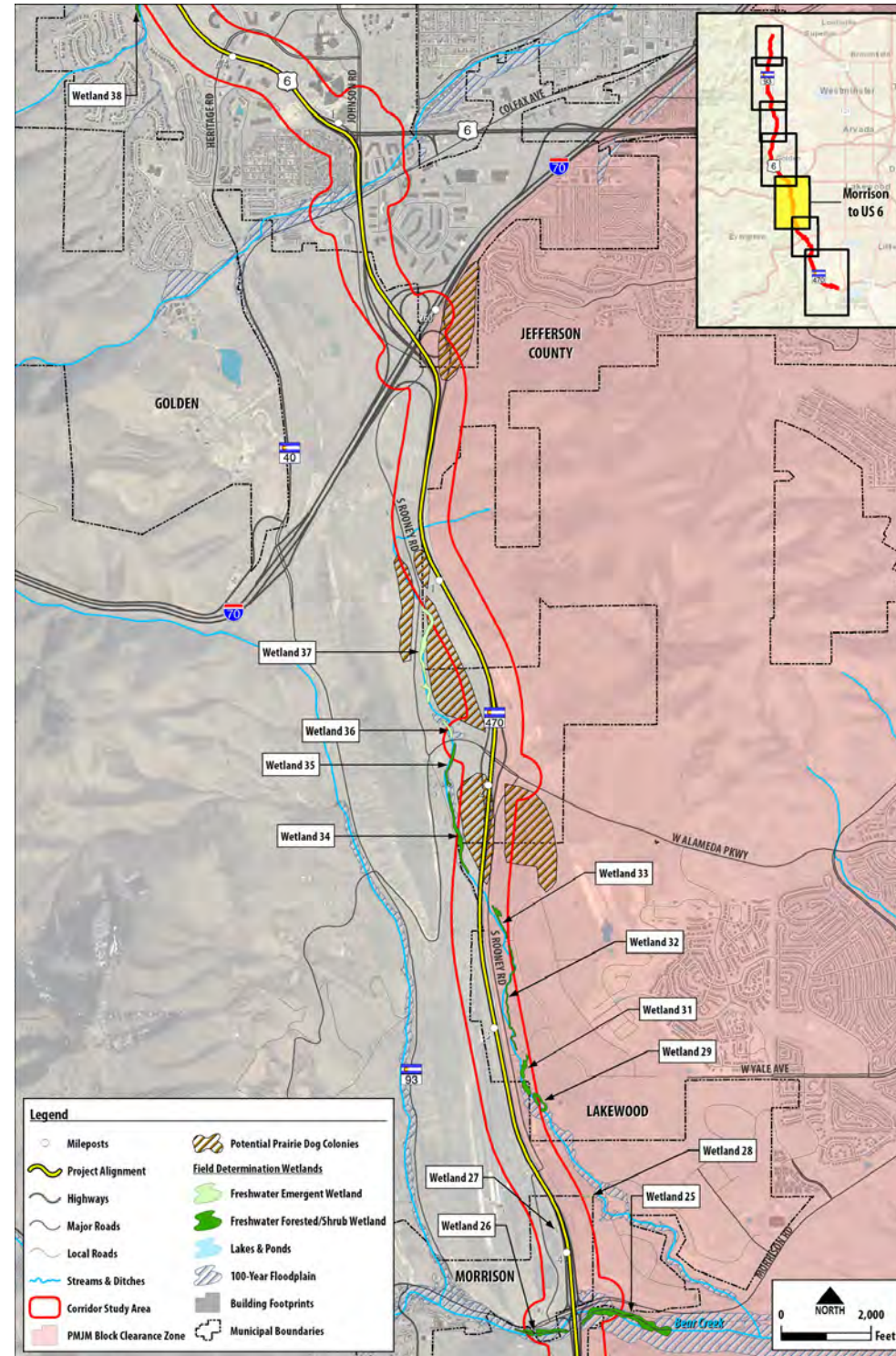
EXISTING ENVIRONMENTAL RESOURCES - MORRISON TO US 6

WestConnect Coalition PEL

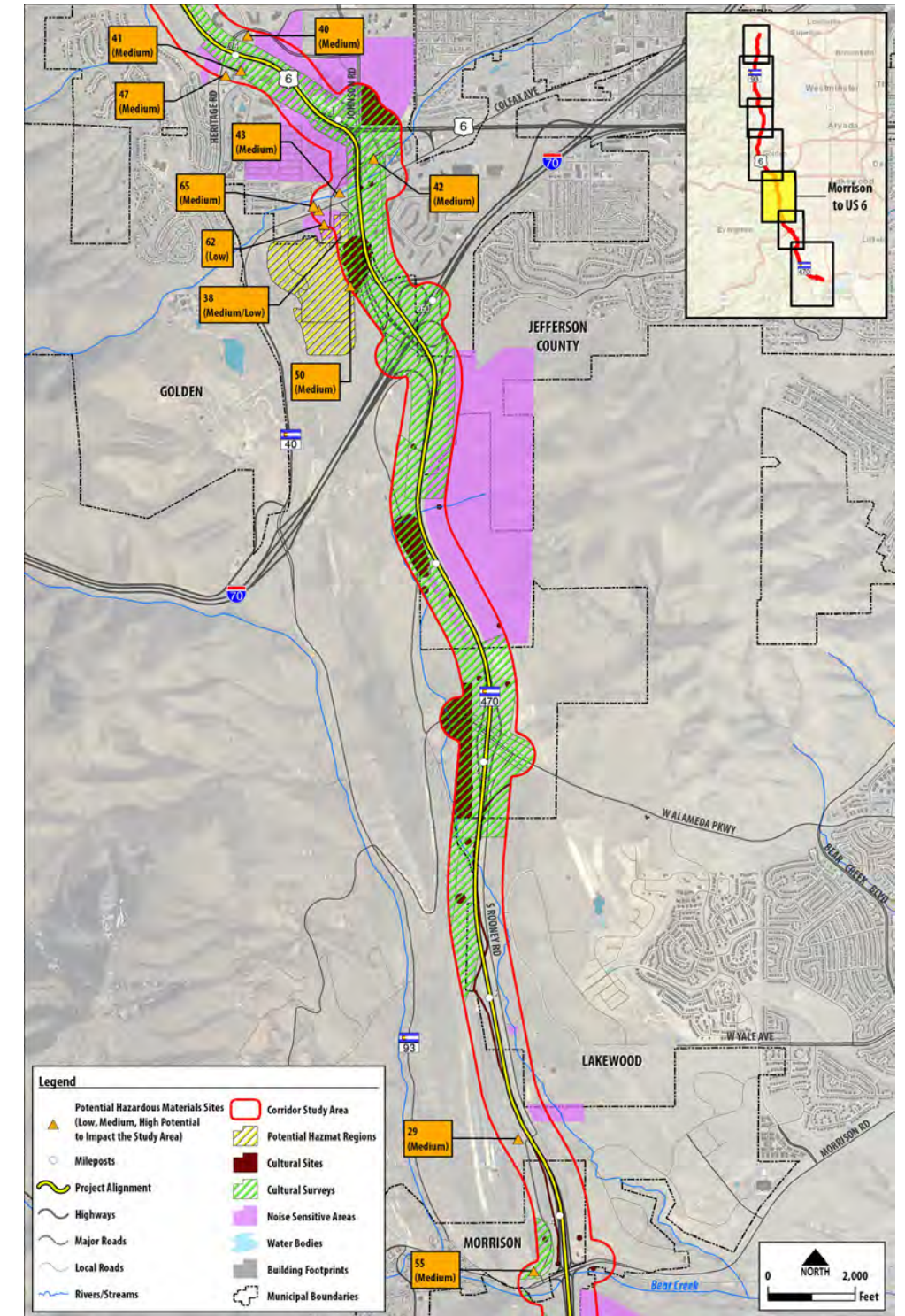
Parks and Recreation and Trails



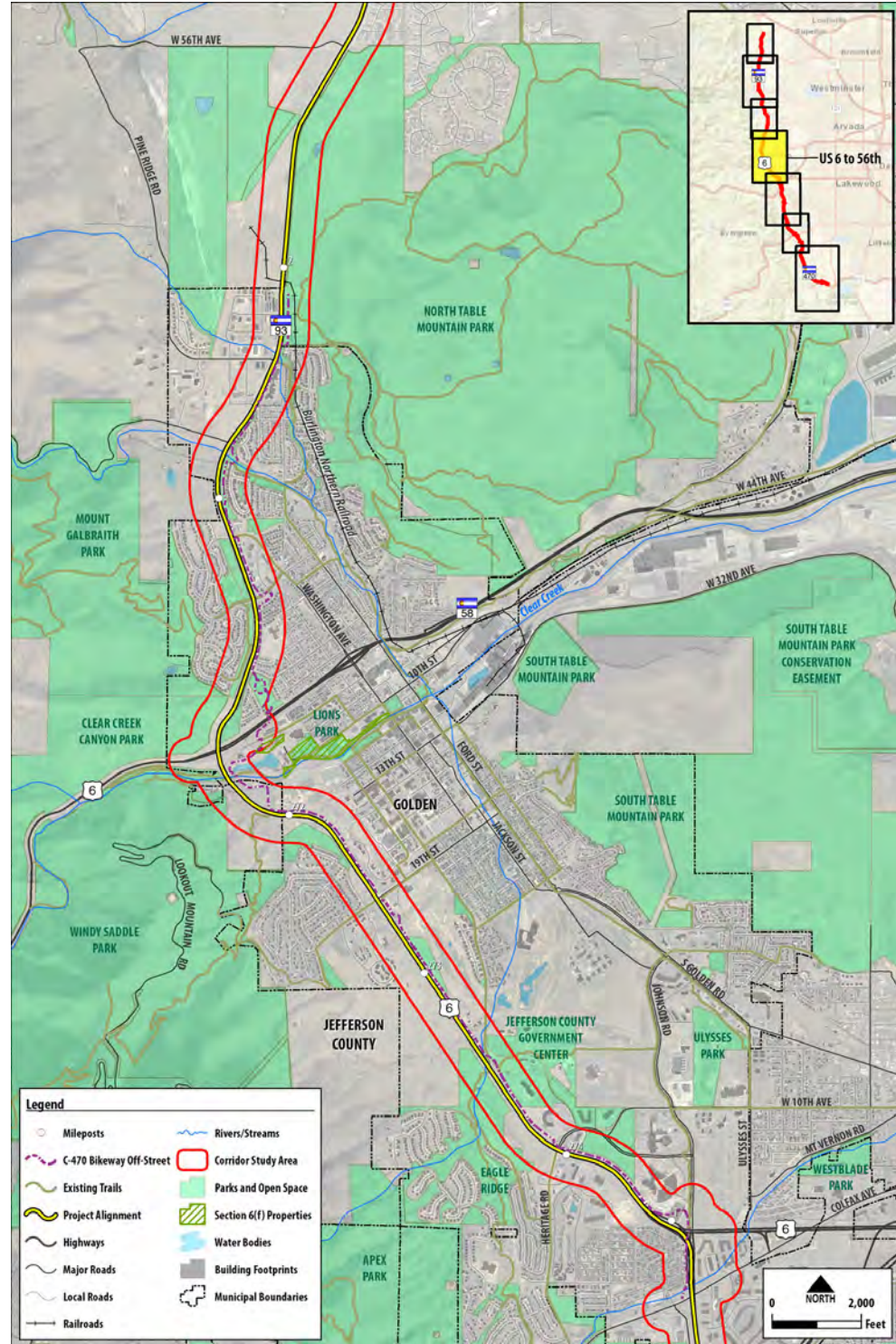
Threatened and Endangered Species and Wetlands



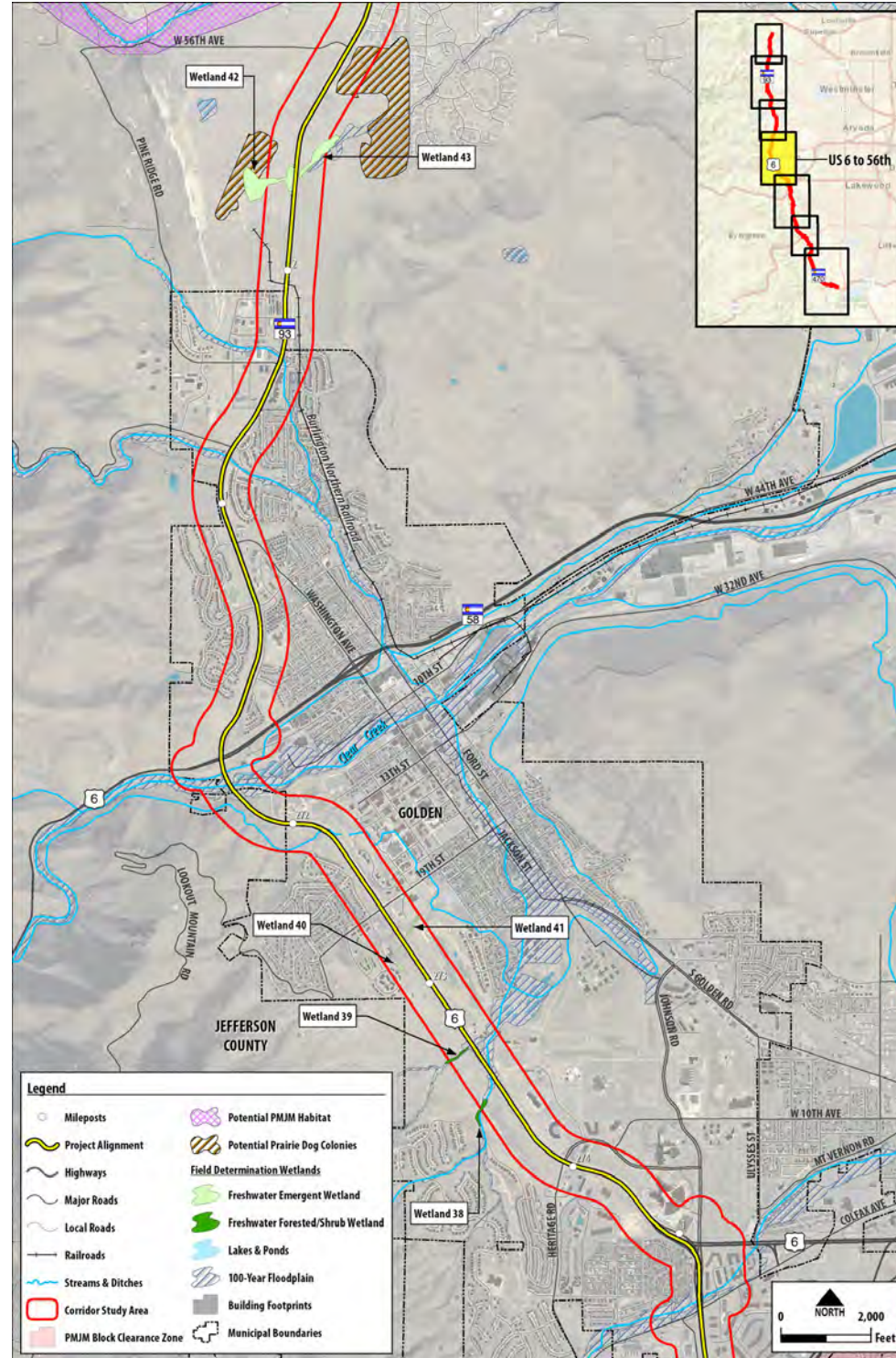
Hazardous Materials, Wells, Cultural Sites and Noise



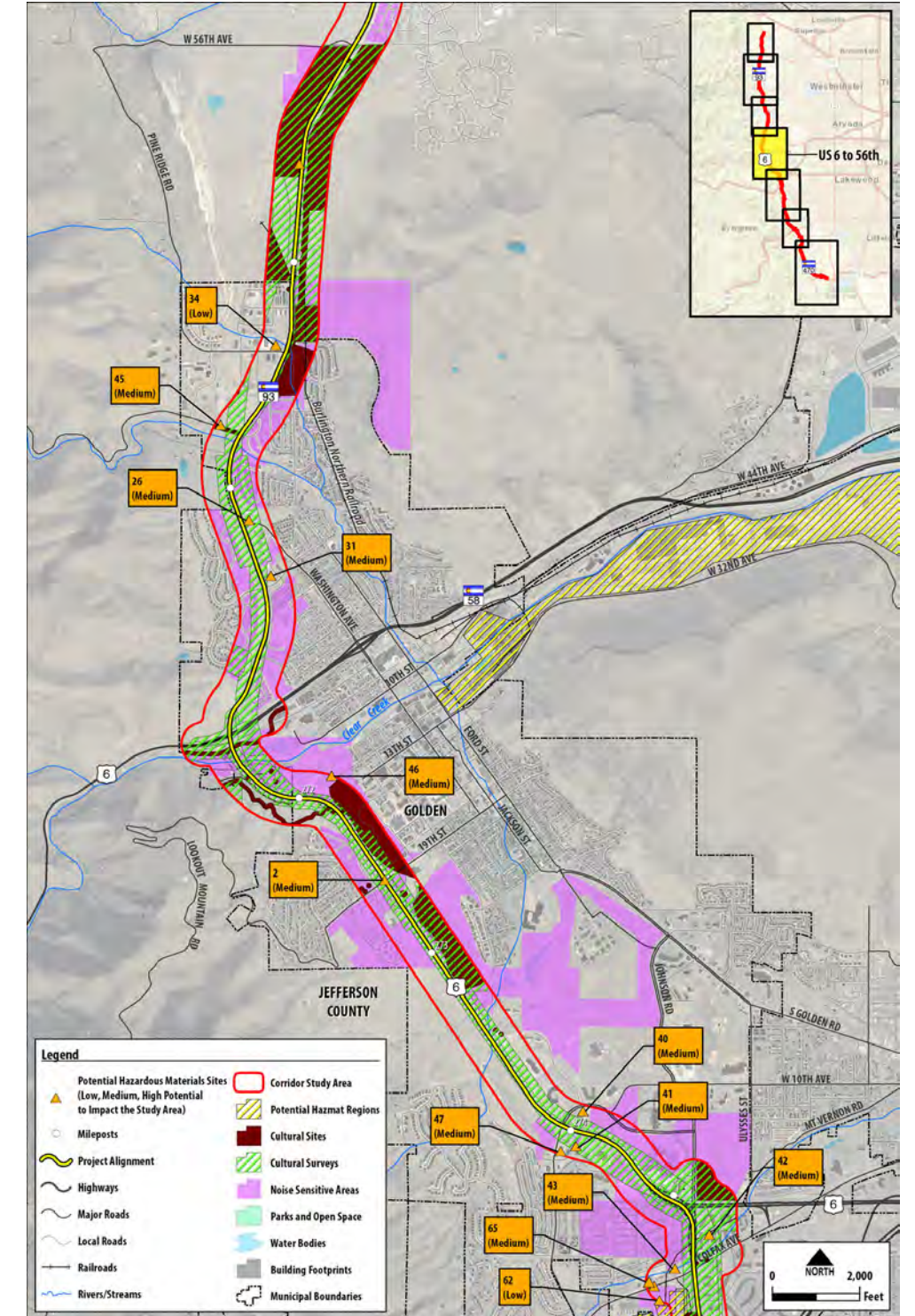
Parks and Recreation and Trails



Threatened and Endangered Species and Wetlands



Hazardous Materials, Wells, Cultural Sites and Noise

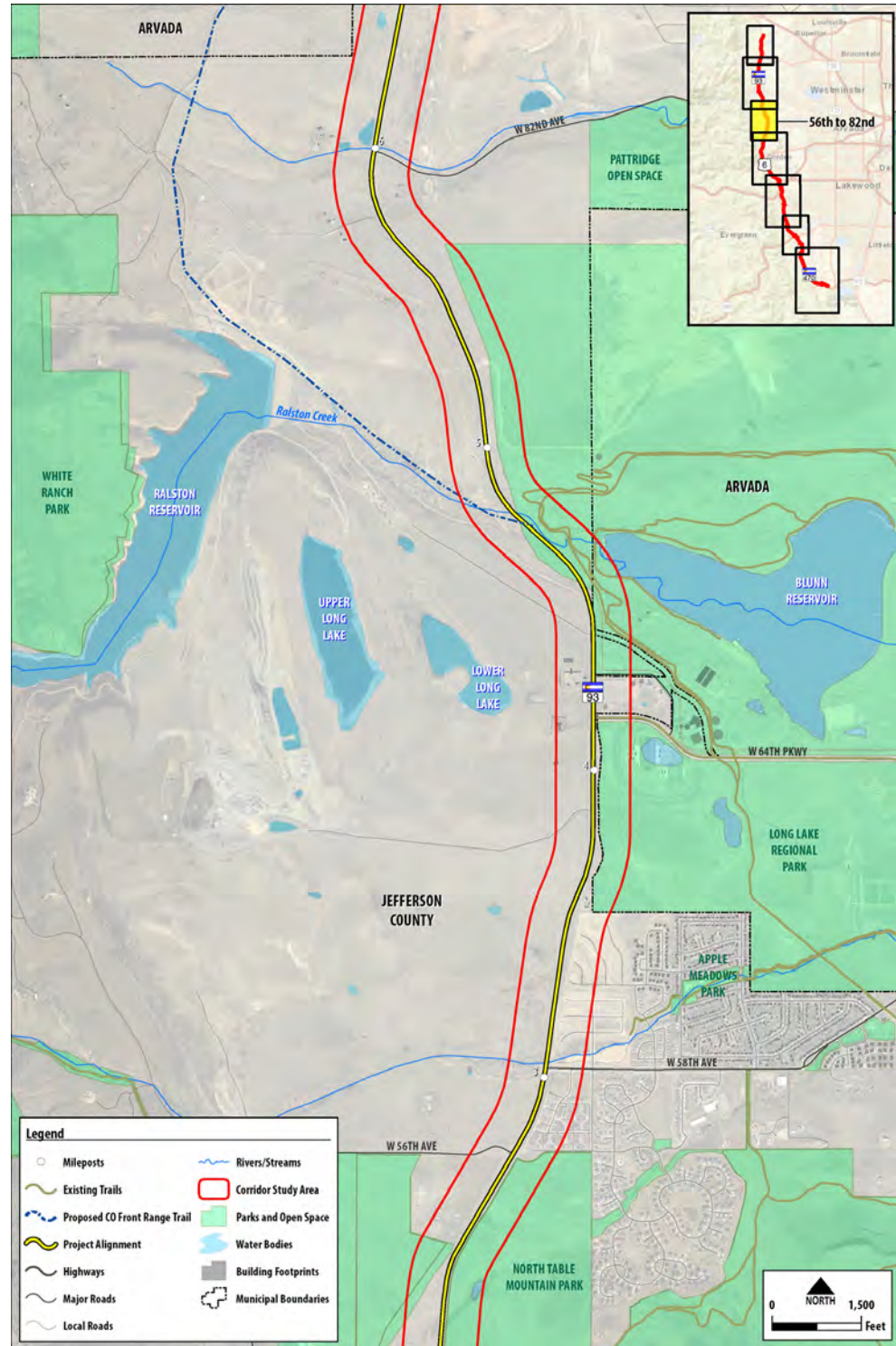




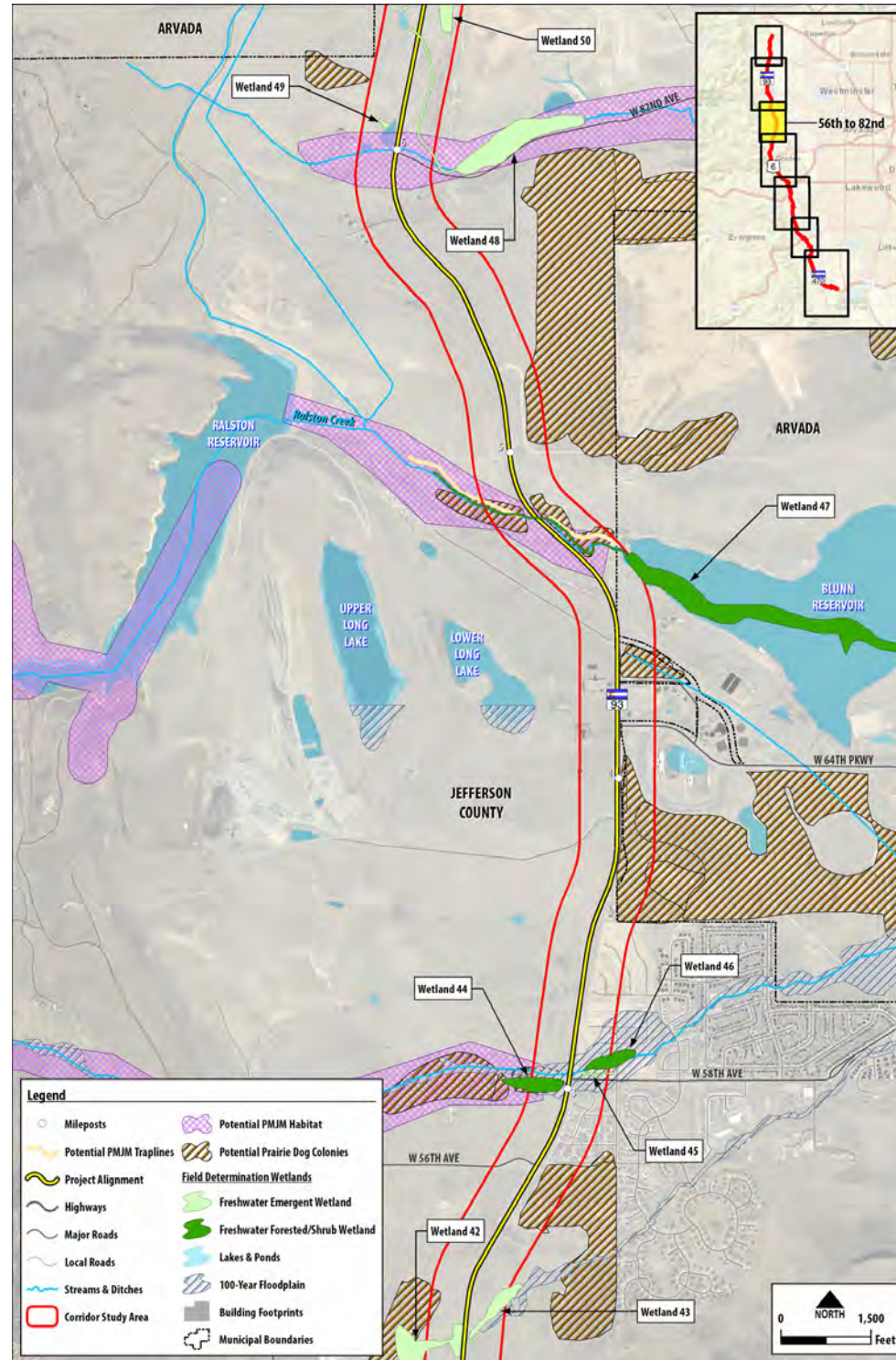
EXISTING ENVIRONMENTAL RESOURCES - 56TH TO 82ND

WestConnect Coalition PEL

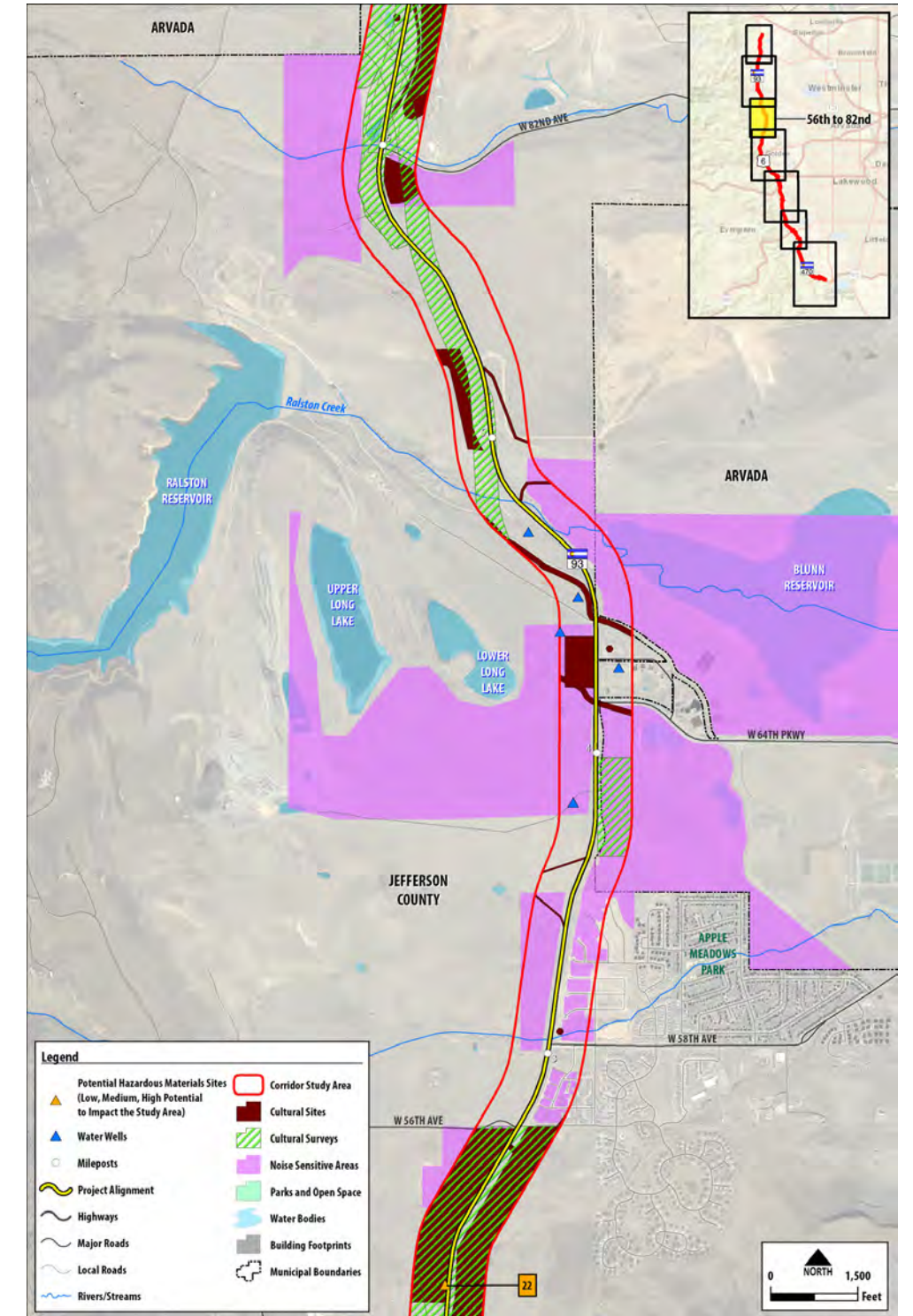
Parks and Recreation and Trails



Threatened and Endangered Species and Wetlands



Hazardous Materials, Wells, Cultural Sites and Noise

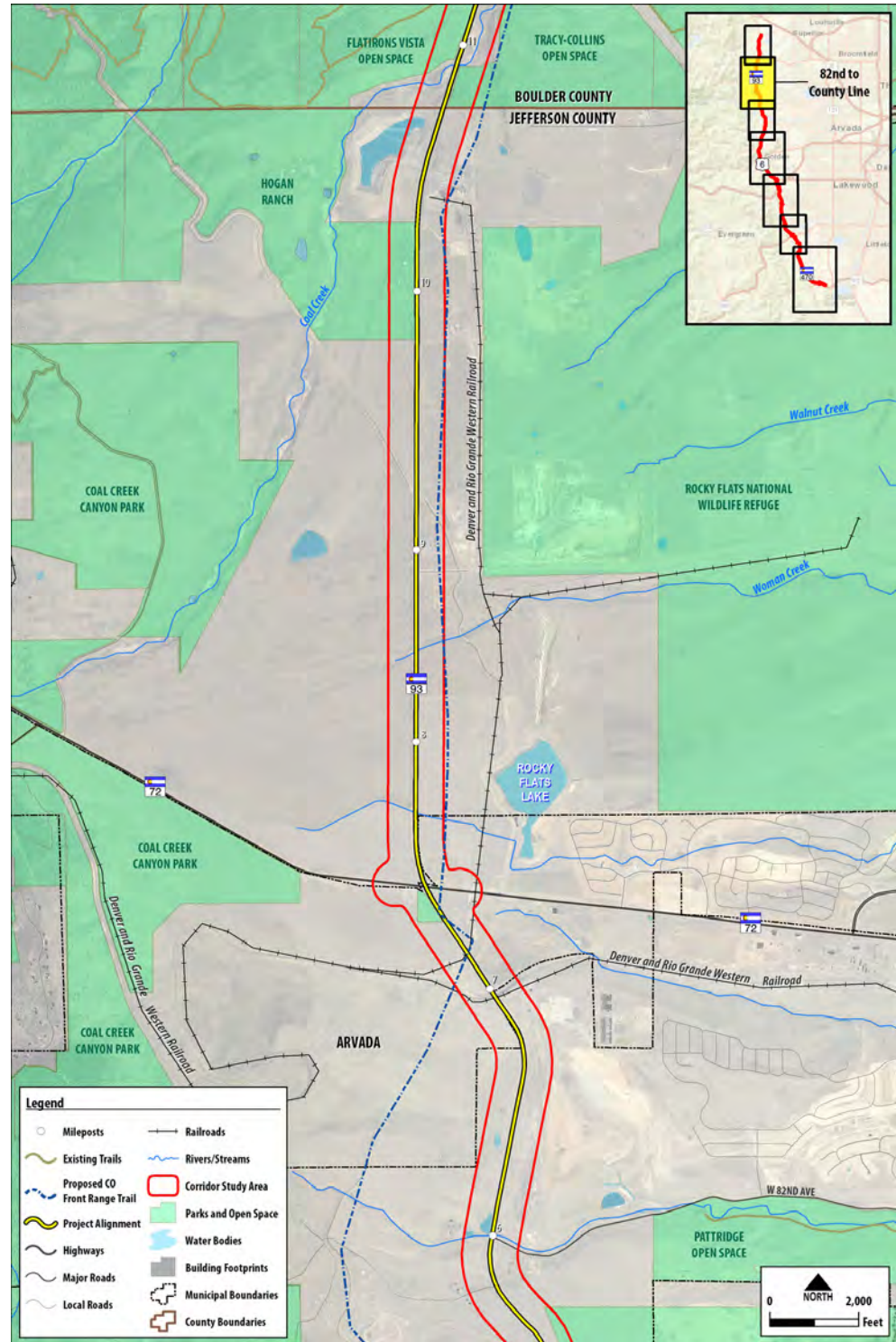




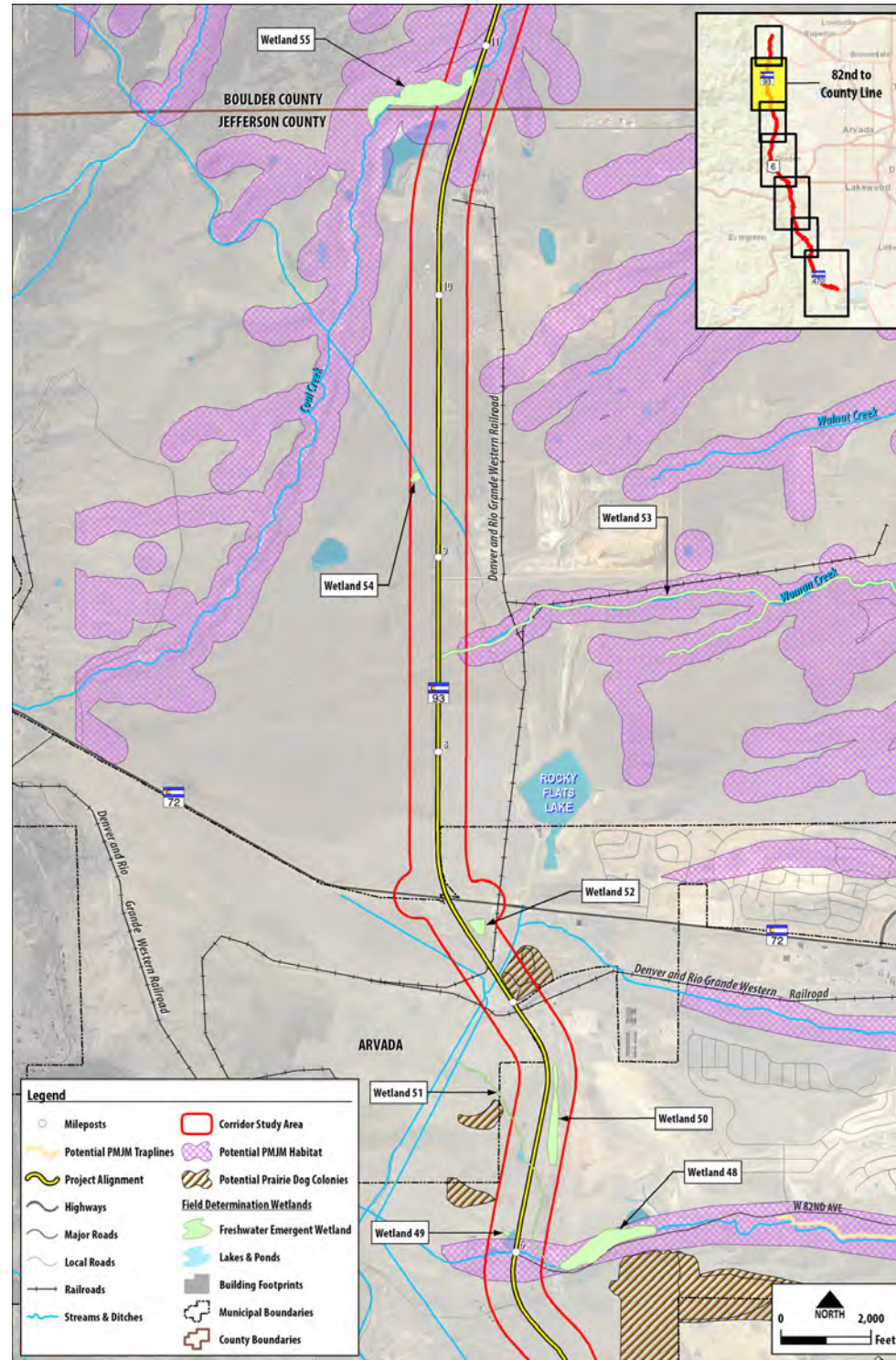
EXISTING ENVIRONMENTAL RESOURCES - 82ND TO COUNTY LINE

WestConnect Coalition PEL

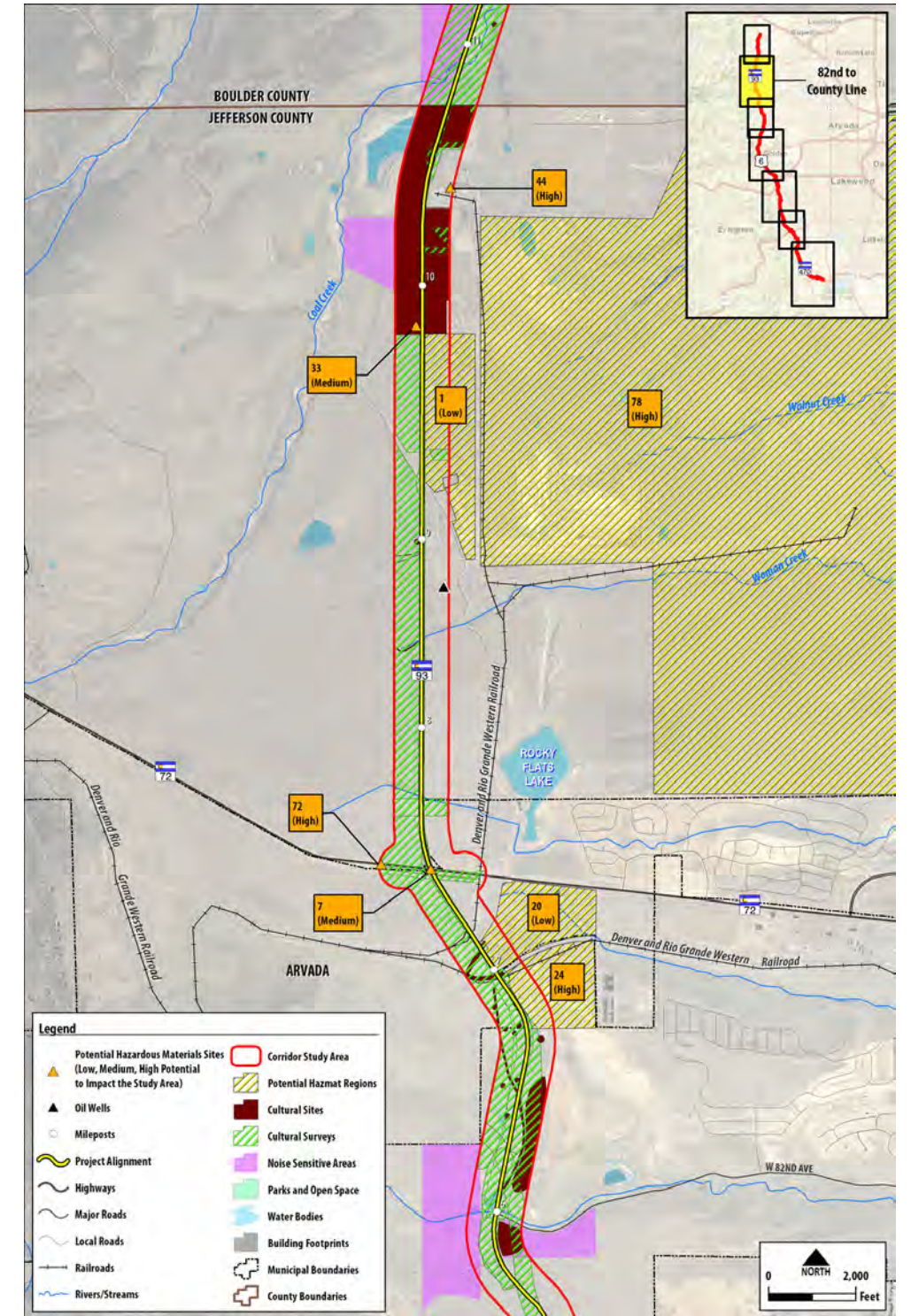
Parks and Recreation and Trails



Threatened and Endangered Species and Wetlands



Hazardous Materials, Wells, Cultural Sites and Noise

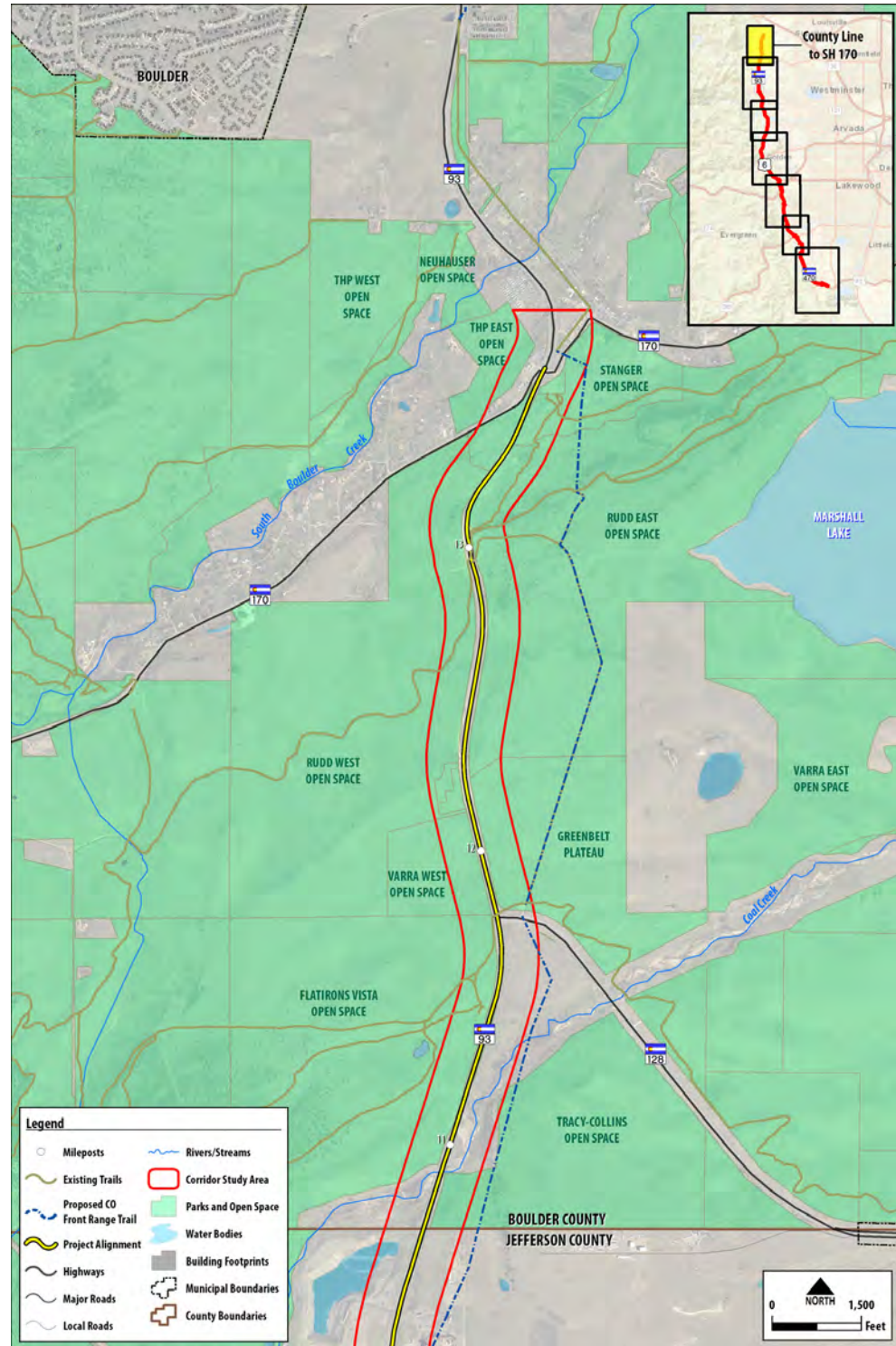




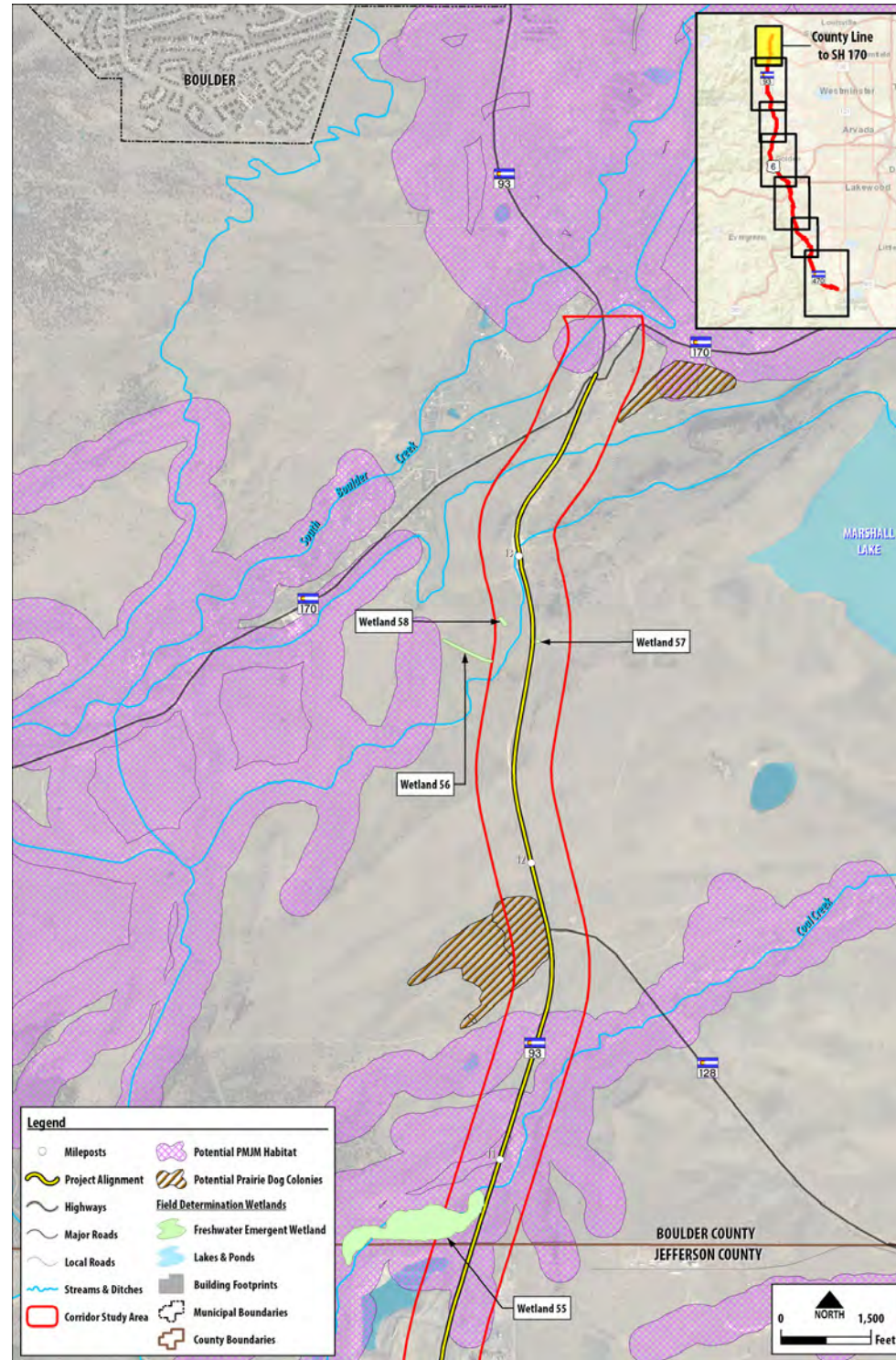
EXISTING ENVIRONMENTAL RESOURCES - COUNTY LINE TO SH 170

WestConnect Coalition PEL

Parks and Recreation and Trails



Threatened and Endangered Species and Wetlands



Hazardous Materials, Wells, Cultural Sites and Noise

