

# **APPENDIX B**

---

## **PUBLIC INVOLVEMENT AND AGENCY COORDINATION**

**FOR THE**

### **6<sup>th</sup> Avenue Parkway Extension Environmental Assessment**

**COLORADO DEPARTMENT OF TRANSPORTATION**

**FEDERAL HIGHWAY ADMINISTRATION**

**June 2016**

**6<sup>th</sup> Avenue Parkway Extension EA**  
**Appendix B – Agency and Stakeholder Coordination**

---

The environmental assessment process included a comprehensive public and agency involvement program, which complemented the technical studies and analyses conducted by the project team. Public involvement included general public meetings, one-on-one meetings with property owners, webpage information, and a range of opportunities to comment through email, phone, and written comments. Public and agency has included the following meetings and outreach:

- Public Open Houses – Invitations to the public open houses were advertised by: City of Aurora project website announcement, added to the City of Aurora’s calendar of events/meetings, mailed letters directly to known impacted both direct and indirect community members, email blast, newspaper advertisement, and flyers to individual households within a determined area. Invited stakeholders included the general public, community, agency, and municipal representatives. At the first public meeting held on December 3, 2014, the project team presented and solicited input on the initial six alignments and solicited input from the public on any other alternatives. The second meeting held March 18, 2015 presented four alignments and solicited input from the public on their preference of alignments.
- Project Management Team (PMT) meetings held monthly beginning in September 2014 with City of Aurora. The PMT consists of key City of Aurora staff involved in the decision making for the project. During PMT meetings, alternative alignments were discussed in specific detail. Input was solicited from each PMT member to obtain information on screening criteria, alternative components, and specific concerns. These items were then included in the alternative development and screening process.
- Technical Working Group (TWG) meetings held monthly beginning in September 2014 with City of Aurora, Arapahoe County, CDOT, Federal Highway Administration (FHWA), Buckley Air Force Base (AFB), Urban Drainage and Flood Control District (UDFCD), and E-470. The TWG consists of key stakeholders and agencies with interest in the project. TWG members provided specific input on alternative screening criteria and alternative alignments. Recommendations and concerns from TWG members were included in the ultimate refinement and selection of the Proposed Action.
- Numerous additional coordination meetings were held with City of Aurora Parks Recreation and Open Space (PROS) Department, Arapahoe County Open Space Department, Great Outdoors Colorado (GOCO), as well as other City and County staff. Discussions with these groups centered around avoidance, minimization, and mitigation of impacts to parks, recreation, and open space resources resulting from the Proposed Action. Input from these groups was considered carefully in the screening and ultimate selection of the Proposed Action.
- Additional coordination meetings between CDOT, FHWA and the City of Aurora.

Input received from the public and stakeholders was thoroughly reviewed and taken into consideration during the alternatives development and screening process, and in the assessment of impact and development of mitigation measures.

**6<sup>th</sup> Avenue Parkway Extension EA**  
**Appendix B – Agency and Stakeholder Coordination**

---

This appendix includes summary information from public meeting and a list of agency and public involvement activities as follows:

**INDEX OF PUBLIC INVOLVEMENT AND AGENCY COORDINATION ACTIVITIES**  
**INFORMATION INCLUDED IN APPENDIX B**

Date	Correspondence/Activity	Page
December 3, 2014	Flyer for First Public Open House Meeting	B-3
December 3, 2014	Open House Meeting #1 Re-cap	B-4
March 18, 2015	Flyer for Second Public Open House Meeting	B-7
March 18, 2015	Open House Meeting #2 Re-cap	B-8
July 7, 2015	CDOT APE Consultation Letter	B-12
July 14, 2015	APE Consultation Letter from State Historic Preservation Officer	B-15
October 28, 2015	Resource Agency Coordination Meeting Letter	B-16
December 11, 2015	Determination of Eligibility and Effects Concurrence Letter	B-18
January 11, 2016	Section 106 Native American Consultation	B-19
February 10, 2016	Section 106 Consultation Response: Comanche Nation	B-24
January 26, 2016	CDOT Eligibility and Effects Determinations for Archaeological Resources	B-25
January 29, 2016	SHPO Eligibility and Effects Determinations for Archaeological Resources	B-26
February 23, 2016	Section 106 Determinations of Eligibility and Effects	B-27
February 23, 2016	Northern Cheyenne Tribe Response	B-28
June 7, 2016	Preble's Meadow Jumping Mouse and Ute Ladies'-tresses Orchid Letter from United States Department of the Interior	B-29
2014 – 2016	List of Agency and Public Involvement Activities	B-32

# You are invited to an open house! Join us to learn more about the 6th Avenue Parkway Extension



Wednesday, December 3, 2014  
Drop by between 6-8 p.m.

Beck Recreation Center  
Ponderosa Room (use south entrance)  
800 Telluride Street, Aurora CO 80011



The City of Aurora's proposed 6th Avenue Parkway Extension will close a critical gap in the regional transportation network to enhance east-west mobility between 6th Avenue/State Highway 30 and E-470, and address increased travel demand from new residential and business growth in the area.

The public is invited to attend the kick-off open house to learn about the project, interact with the project team and provide input on the alignment alternatives. Refreshments will be provided.

*Bilingual Communication: Spanish interpretation will be available.  
Información Bilingüe: Interpretación en español estará disponible.*

## Parking & Access Information

The facility is located in the Springhill Park complex off Telluride Street near the intersection with East 8th Avenue. Please use the south entrance and south parking lot (located on the far right side of the building from the main entrance).



## December 3, 2014 Open House Re-cap

### Overview

The 6<sup>th</sup> Avenue Parkway Extension project in the City of Aurora, being documented as an Environmental Assessment (EA), is intended to explain the need for the proposed project, the alternatives considered, the anticipated environmental benefits, impacts, and mitigation of alternatives, and identifies the selected alternative for implementation.

In support of the EA process, the Project Team held an Open House on December 3, 2014 to solicit comments from the public and local agencies during the review period.

The Open House was held at the Beck Recreation Center for the surrounding community to learn more about the 6<sup>th</sup> Avenue Parkway Extension project, interact with the Project Team and provide input on the preliminary alignments. The proposed extension will close a critical gap in the regional transportation network to enhance east-west mobility between 6<sup>th</sup> Avenue/State Highway 30 and E-470, and address increased travel demand from new residential and business growth in the area.

### Station Description

The Open House consisted of several different informational stations staffed by the City and Project Team members including:

- **Project Overview** – A high level introduction to the project purpose and need, project history, the alternatives screening process and considerations, and existing traffic analysis.
- **Alternatives Overview** – Maps of the six current alternatives under consideration in the study area with basic pros and cons of each.
- **Screening Criteria Prioritization** – All Open House attendees were asked to participate in this interactive sticky dot activity by taking four dots and plotting them in order of priority next to their preferred criteria. This station also included one comprehensive map of all six alternatives together to provide broader context. *See image to the above-right for results.*
- **Next Steps** – An outline of remaining project milestones and project deliverables.

ENVIRONMENTAL DOCUMENTATION AND PRELIMINARY DESIGN OF  
6TH AVENUE PARKWAY EXTENSION  
(SH30 TO E-470) City of Aurora

## WHAT'S MOST IMPORTANT TO YOU?

Help us to prioritize the screening criteria.  
Place a sticky dot next to the four criteria that matter to you most.

CRITERIA	Priority (Sticky Dots)
Improve Transportation Operations and Mobility "I want to get there faster and more conveniently."	10
Enhance Local Access and Circulation "I want to get around the neighborhood easier and faster."	4
Provide Transportation Infrastructure to Facilitate Economic Development "I want easy access to a roadway to develop my property."	8
Avoid, Minimize, and Mitigate Adverse Impacts to Adjacent Roadway Facilities "I want to minimize impacts and disturbance to other roads in the area."	3
Avoid, Minimize, and Mitigate Residential, Commercial, and Other Property Impacts "I want minimal impacts from the new roadway to my property."	6
Avoid, Minimize, and Mitigate Impacts to Floodways and Floodplains "I want to minimize impacts to the floodway or floodplain in the area."	3
Minimize Maintenance and Operational Requirements for Floodway Bridge Crossings "I want the shortest length of bridge(s) that needs to be maintained by the City."	7
Avoid, Minimize, and Mitigate Environmental Impacts "I want to preserve the natural character of the area including the Triple Creek Greenway Corridor and Sand Creek Riparian Preserve" "I want to minimize how much of the road I see and hear."	9

14-040 12/3/14

- **Public Comment** – Input from the surrounding community is considered a very important aspect to this transportation planning process and each Open House attendee was encouraged to complete a public comment form. Community members were also able to complete the form after the Open House and submit for review either by mail or online.

## Input

Approximately 45 community members attended the December 3<sup>rd</sup> Open House between the hours of 6 to 8 p.m. Those in attendance represented a diverse geographical sample of residents in the public process study area. Of those 45, nearly 60% completed a public comment form.

The following two screening criteria were considered to be most important to attendees:

- 1) Improve transportation operations and mobility
- 2) Avoid, minimize, and mitigate environmental impacts – specifically those to the surrounding open space and parks

In support of the project purpose and need, community members were asked to provide their primary interest in connecting the gap between SH 30 and E-470 and the top two answers were:

- 1) Reduce travel time
- 2) Reduce congestion to address existing/future demand

Attendees were given the opportunity to provide feedback on the six proposed alignments to-date; the following summarizes the results of each:

- 1) **No Action** (what if nothing was done) – very few were in support of no action being taken
- 2) **Alternative 1** – most people were not in favor of this alignment because of it being too far north and therefore not really helping reduce travel time as well as the potential impact to surrounding property owners. Additionally this alternative appeared to impact more parks and open space.
- 3) **Alternative 2** – more people than not were in favor of this alignment due to the minimal amount of environmental impact and the appearance of the most direct connection.
- 4) **Alternative 3** – the majority of those who responded were not supportive of this alignment due to the fairly long bridge crossing that would be required (particularly with other options available in the same area with shorter bridge lengths)
- 5) **Alternative 4** – most people were in favor of this alignment stating that it was the most direct and straight route
- 6) **Alternative 5** – all those who responded did not like this alignment as it had the longest required bridge construction stating cost concerns (both construction and maintenance) along with negative environmental impacts
- 7) **Alternative 6** – most people were not in favor of this alignment due to the lack of improved access to E-470 and concerns about the ability to preserve the surrounding natural environment

## Schedule

### **Where Are We in the Environmental Assessment Process?**

- Initiate Project and Define Scope of Study
- Define the Purpose and Need and Initial Design Options
- **Collect and Analyze Data**
- **Design Options Screening**
- Environmental Impact Analysis of Design Options
- Prepare Draft EA
- Publish Draft EA
- Publish Decision Document

## What's Next

The next public Open House will be held in the spring of 2015.

The draft Environmental Assessment for this project is scheduled for review by the public in the summer of 2015.

Although the initial public comment period is closed, the public is welcome to sign up for the project mailing list or submit a comment or question by emailing the project team at [6thavepkwy@fhueng.com](mailto:6thavepkwy@fhueng.com). You may also call the project hotline at 720-200-8929.

You are invited to an

# OPEN HOUSE

Join us to provide input on the alternatives considered

## 6th Avenue Parkway Extension



Wednesday, March 18, 2015  
Drop by between 6-8 p.m.

Beck Recreation Center  
Ponderosa Room (use south entrance)  
800 Telluride Street, Aurora CO 80011

The City of Aurora's proposed 6th Avenue Parkway Extension will close a critical gap in the regional transportation network to enhance east-west mobility between 6th Avenue/State Highway 30 and E-470, and address increased travel demand from new residential and business growth in the area.

The public is invited to attend an open house for an update on the roadway alternatives, the screening process, and the steps that we are following to select a preferred alternative.

*Bilingual Communication: Spanish interpretation will be available.  
Información Bilingüe: Interpretación en español estará disponible.*

### Parking & Access Information

The facility is located in the Springhill Park complex off Telluride Street near the intersection with East 8th Avenue. Please use the south entrance and south parking lot (located on the far right side of the building from the main entrance).





## 6<sup>th</sup> Avenue Parkway Extension Website Update

### March 18, 2015 Open House Re-cap

#### Overview

The City of Aurora's 6<sup>th</sup> Avenue Parkway Extension project is being documented as an Environmental Assessment (EA) following the guideline of the National Environmental Policy Act of 1969 (NEPA). The proposed extension will close a critical gap in the regional transportation network to enhance east-west mobility between 6th Avenue/State Highway 30 and E-470, and address increased travel demand from new residential and business growth in the area.

In support of the EA process, the project team hosted a second open house March 18, 2015, to follow up the first open house from December. Conveniently located at Beck Recreation Center, the second open house gave the surrounding community a chance to get an update on the project's process, talk with team members and give input on the refined alignments.

During the open house, attendees were able to review the need for the proposed project, the alternatives being considered, and the anticipated environmental benefits. Attendees from both the public and local agencies were encouraged to provide feedback as part of an effort to gather input on the project.



#### Station Description

The open house consisted of several different informational stations staffed by the City of Aurora and project team members including:

- **Updated Project Overview** – A high-level introduction to the project public outreach area, project history, project purpose and need, vicinity map, alternatives screening process and considerations, existing traffic analysis, travel distance and time comparison.

- **Alternatives Overview** – Maps of the six Level 1 alignment alternatives. Displays demonstrated the process undertaken since December 3, 2014 that the project team has used to move from Level 1 (six alternatives) to Level 2 (four alternatives). The overview also displayed basic pros and cons of each alternative as well as the future roadway cross sections.
- **Environmental Considerations** – Maps of the Section 4(f) properties for parks and trails in the area, floodways and floodplains in the area, and the locations and types of wildlife activity in the project study area.
- **Work Station Map** – All open house attendees were asked to participate in this interactive activity by writing comments on color-coded sticky notes that corresponded to Traffic Operations and Engineering Considerations (blue), Environmental Considerations (yellow), and/or Property Impact Considerations (red) and place them on an aerial map of the project study area with the four refined alternatives. Eight blue comments were received, 18 yellow comments were received, and 11 comments were received regarding impacts to property and access along the alignments.

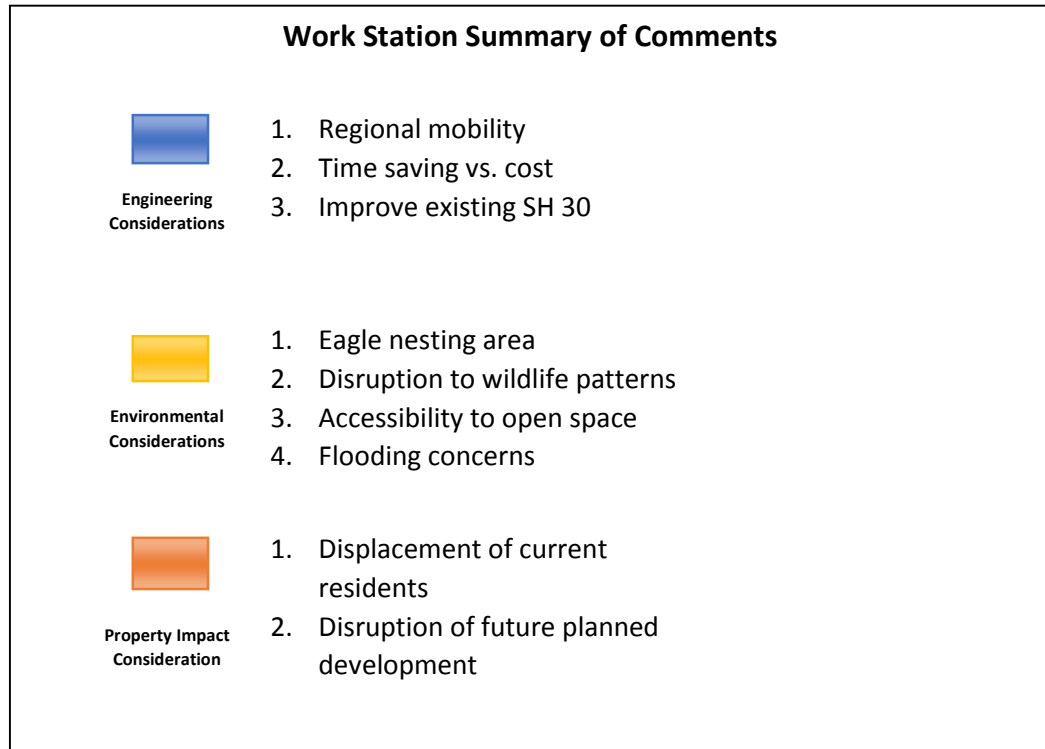
### Input

Approximately 52 community members attended the March 18 open house from 6 to 8 p.m. Those in attendance represented a diverse geographical sample of residents in the public process study area. Of those 52, over 60% completed a public comment form.

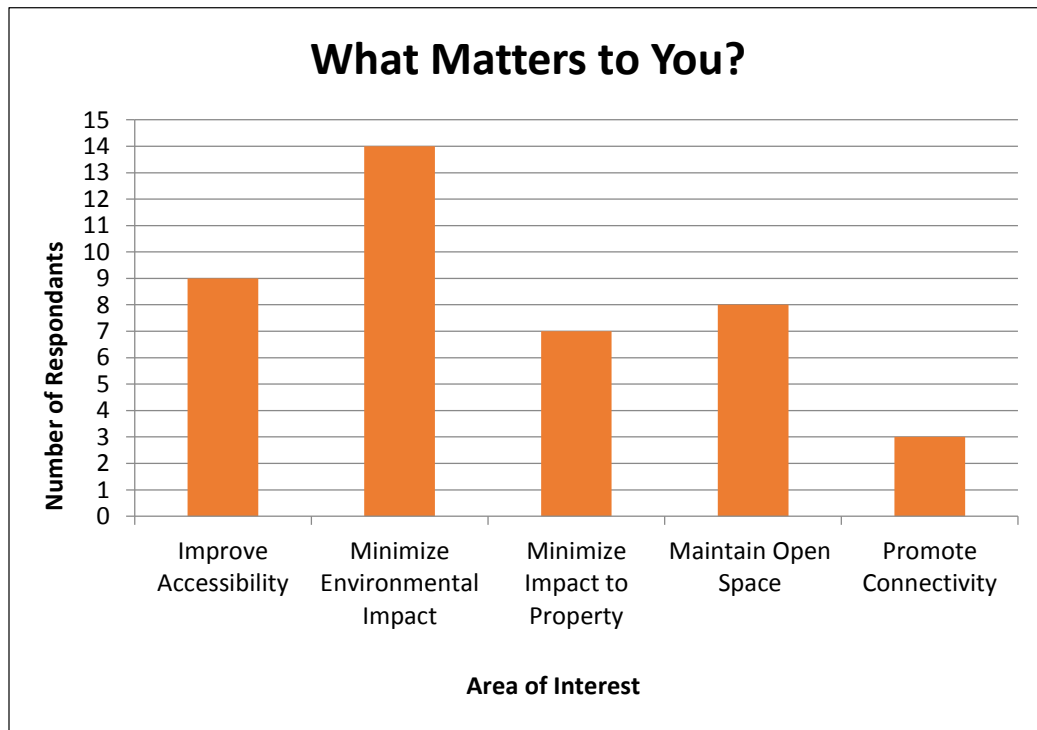
Attendees were given the opportunity to provide feedback on the four refined alignments to date; the following summarizes the results of each:

- 1) **Alternative 1A** – Several people were in favor of this alignment due to it being the most direct route using existing 6<sup>th</sup> Avenue roadway and right-of-way, less impact to parks and open space, large bridge opening for wildlife crossings, and the least impact to wetlands. In addition, the public acknowledged that alternative 1A affects the most private residences.
- 2) **Alternative 2A** – This appears to be the most favored alignment based on public comment. Attendees stated it allows access, has the lowest impact to the wildlife corridor and environment, has the least impact to residents, parks and open space, and appears to be less expensive than the other three alternative alignments.
- 3) **Alternative 4A** – Not many of those who responded were supportive of this alignment due to impact to open space, and impact to eagle and wildlife habitat. There were also concerns regarding the crossing of the floodway and floodplain.
- 4) **Alternative 4B** – Very few people were in favor of this alignment, stating that there were not enough positive elements, and that it is too close to the eagle and wildlife habitat, cuts through too much land, and appears to be too expensive.

Attendees that participated in the work station activity provided over 35 comments. Below is a summary of the common themes collected (in order of magnitude).



More than half of the open house attendees submitted a comment card with valuable input. Below are areas of interest that were commonly shared.



## Schedule

### **Where Are We in the Environmental Assessment Process?**

- Initiate Project and Define Scope of Study
- Define the Purpose and Need and Initial Alternative Alignments
- Collect and Analyze Data
- **Alternative Alignments Screening**
- **Environmental Impact Analysis of Alternative Alignments**
- Prepare EA
- Publish EA / Final Open House (date TBD)
- Publish Decision Document

### What's Next

The Environmental Assessment for this project is scheduled for review by the public in the late summer of 2015.

Although the initial public comment period is closed, the public is welcome to sign up for the project mailing list or submit a comment or question by emailing the project team at [6thavepkwy@fhueng.com](mailto:6thavepkwy@fhueng.com). You may also call the project hotline at 720-200-8929.



**COLORADO**

Department of Transportation

Region 1

Planning & Environmental

2000 South Holly Street,

Denver, CO 80222-4818

July 7, 2015

Ms. Liz Boyer, Historic Preservation Specialist  
Historic Sites & Preservation Office  
Aurora Historic Preservation Committee  
15051 East Alameda Parkway  
Aurora, CO 80012

Re: **Area of Potential Effects (APE) Consultation** Local Agency Environmental Assessment: 6<sup>th</sup>  
Avenue Parkway Extension, City of Aurora, Arapahoe County

Dear Ms. Boyer:

As you may be aware, the City of Aurora proposes to extend 6<sup>th</sup> Avenue between State Highway 30 (SH 30) and the existing Express Tollway 470 (E-470) interchange at 6<sup>th</sup> Avenue in the City of Aurora, Arapahoe County, Colorado. This new connection would close a critical gap in the regional transportation network, enhancing east-west mobility throughout the region. The project is sponsored by the local agency, the City of Aurora, with oversight provided by the Colorado Department of Transportation (CDOT).

Two projects alternatives are being considered as part of this Environmental Assessment: No-Action Alternative and the Proposed Action Build Alternative. The No-Action Alternative makes no improvements to the existing roadway system. The Proposed Action would construct the 6<sup>th</sup> Avenue Parkway extension along the selected alignment (Alternative 2A), and would provide a direct connection between 6<sup>th</sup> Avenue and the existing E-470 interchange at 6<sup>th</sup> Avenue.

As a Certified Local Government (CLG) with a potential interest in this undertaking, we are inviting your office to participate as a consulting party in the Section 106 (36 CFR 800) review. Information contained in this correspondence addresses the proposed Area of Potential Effects (APE); evaluation of historic resource eligibility and effects will follow. Should your office choose to participate in the review, please respond within thirty (30) days of receipt of these materials.

### **Area of Potential Effects**

The APE boundary was defined by the area where direct and indirect effects are anticipated from construction of the Proposed Action. The APE is centered along the limits of disturbance for the Proposed Action, including an approximately 500-foot buffer based on a noise study conducted for the project, to account for indirect effects resulting from increased roadway noise. The APE includes properties with buildings 45 years of age or older, including previously-recorded resources, and includes the historic boundary of each of these resources. The APE covers land in Sections 1, 2, 10, 11, and 12 of Township 4 South, Range 66 West in Arapahoe County, Colorado. Please refer to the enclosed APE map for additional information.

Ms. Boyer  
July 7, 2015

### Survey Methodology

Archival research was conducted utilizing several resources to determine whether historic properties would be affected by the Proposed Action, including:

- A file search through the Office of Archaeology and Historic Preservation (OAHP) online Compass database was first conducted to determine whether previously-recorded National Register of Historic Places (NRHP) eligible or listed resources were located within or near the project study area.
- Review of Arapahoe County Assessor's Office records to determine if any buildings within the project study area met the minimum age requirement of 50 years for historic eligibility. Properties 45 years and older were reviewed due to the anticipated environmental review schedule and construction horizon.
- Analysis of historic topographical maps and historic aerial photography to determine changes in the built and natural landscape over time.
- Review of reports from previous projects near the proposed study area.
- Completion of field visits to verify the existing conditions of built environment resources. Site visits were conducted by Jake Lloyd, historic resources specialist and Jessica Myklebust, environmental project manager with Felsburg, Holt & Ullevig on March 16-17, 2015.

Survey of properties within the APE is currently underway, including assessment of NRHP determinations of eligibility and Section 106 effects. These determinations will be submitted to your office for review.

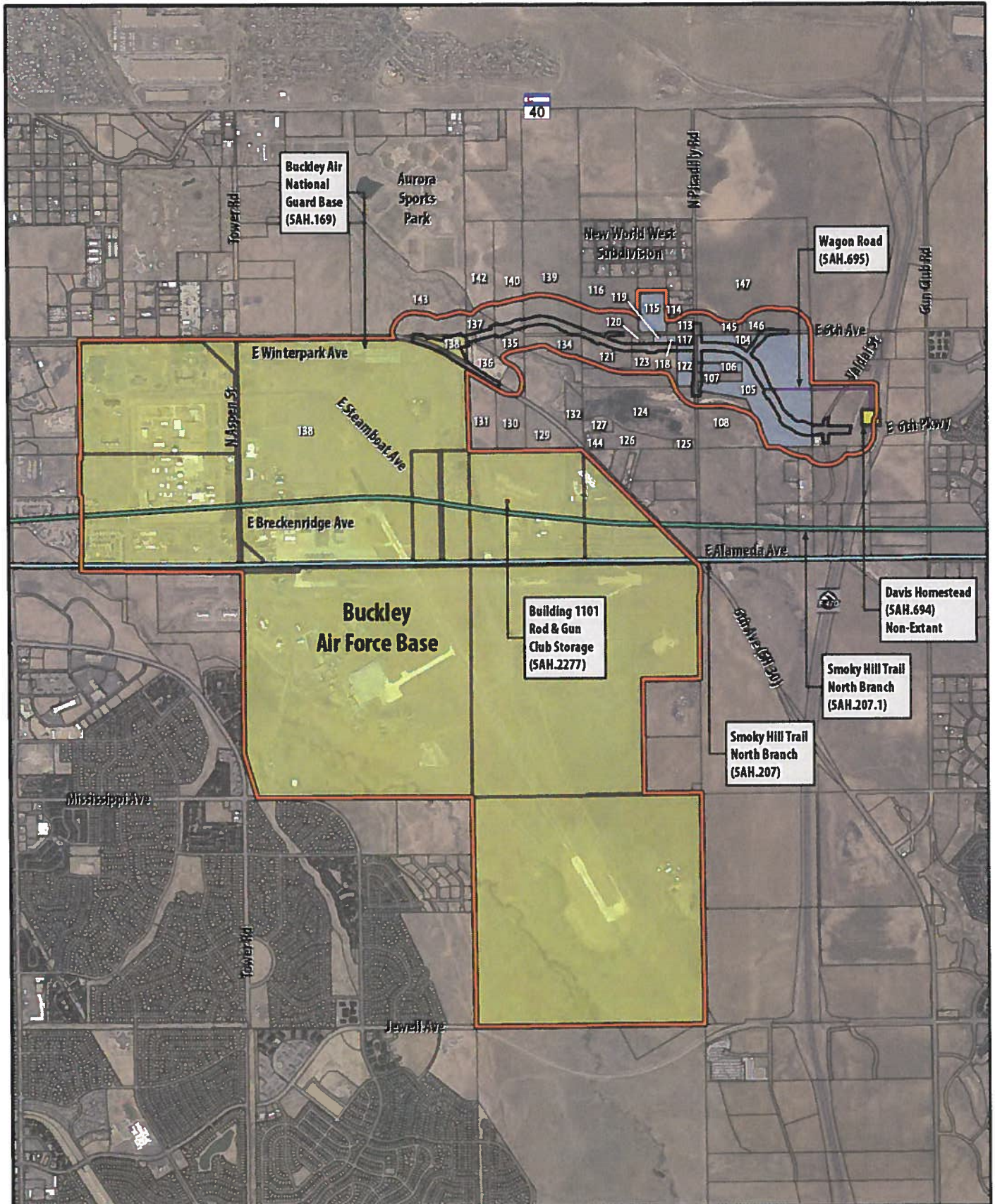
We request your comments with the APE and survey methodology discussed above. Thank you in advance for your prompt attention to this matter. If you require additional information, please contact Region 1 Senior Historian Ashley L. Bushey at (303) 757-9397 or [ashley.bushey@state.co.us](mailto:ashley.bushey@state.co.us).

Sincerely,



*for* Charles Attardo  
Region 1 Planning and Environmental Manager

Enclosures: Area of Potential Effects Map



**Legend**

- Smoky Hill Trail North Branch (SAH.207)
- Parcels with Buildings 45 Years or Older
- Building 1101 Rod & Gun Club Storage (SAH.2277)
- Davis Homestead (SAH.694) Non-Extant
- Area of Potential Effects
- Smoky Hill Trail North Branch (SAH.207.1)
- Buckley Air National Guard Base (SAH.169)
- Wagon Road (SAH.695)
- Proposed Roadway Design
- Property Boundaries





July 14, 2015

Charles Attardo  
Region 1 Planning and Environmental Manager  
Colorado Department of Transportation  
Planning & Environmental  
2000 South Holly Street  
Denver, CO 80222-4818

Re: Area of Potential Effects (APE) Consultation Lead Agency Environmental Assessment: 6<sup>th</sup> Avenue Parkway Extension, City of Aurora, Arapahoe County (CHS #68573)

Dear Mr. Attardo:

Thank you for your correspondence dated July 7, 2015 and received on July 13, 2015 by our office regarding the consultation of the above-mentioned project under Section 106 of the National Historic Preservation Act (Section 106).

After review of the provided information, we do not object to the proposed Area of Potential Effects (APE) for the proposed project. We look forward to further consultation regarding cultural resources affiliated with this proposed project.

We request being involved in the consultation process with the local government, which as stipulated in 36 CFR 800.3 is required to be notified of the undertaking, and with other consulting parties. Additional information provided by the local government or consulting parties might cause our office to re-evaluate our eligibility and potential effect findings.

Please note that our compliance letter does not end the 30-day review period provided to other consulting parties. If we may be of further assistance, please contact Jennifer Bryant, our Section 106 Compliance Manager, at (303) 866-2673 or [jennifer.bryant@state.co.us](mailto:jennifer.bryant@state.co.us).

Sincerely,

A handwritten signature in blue ink, appearing to read "Ed Nichols".

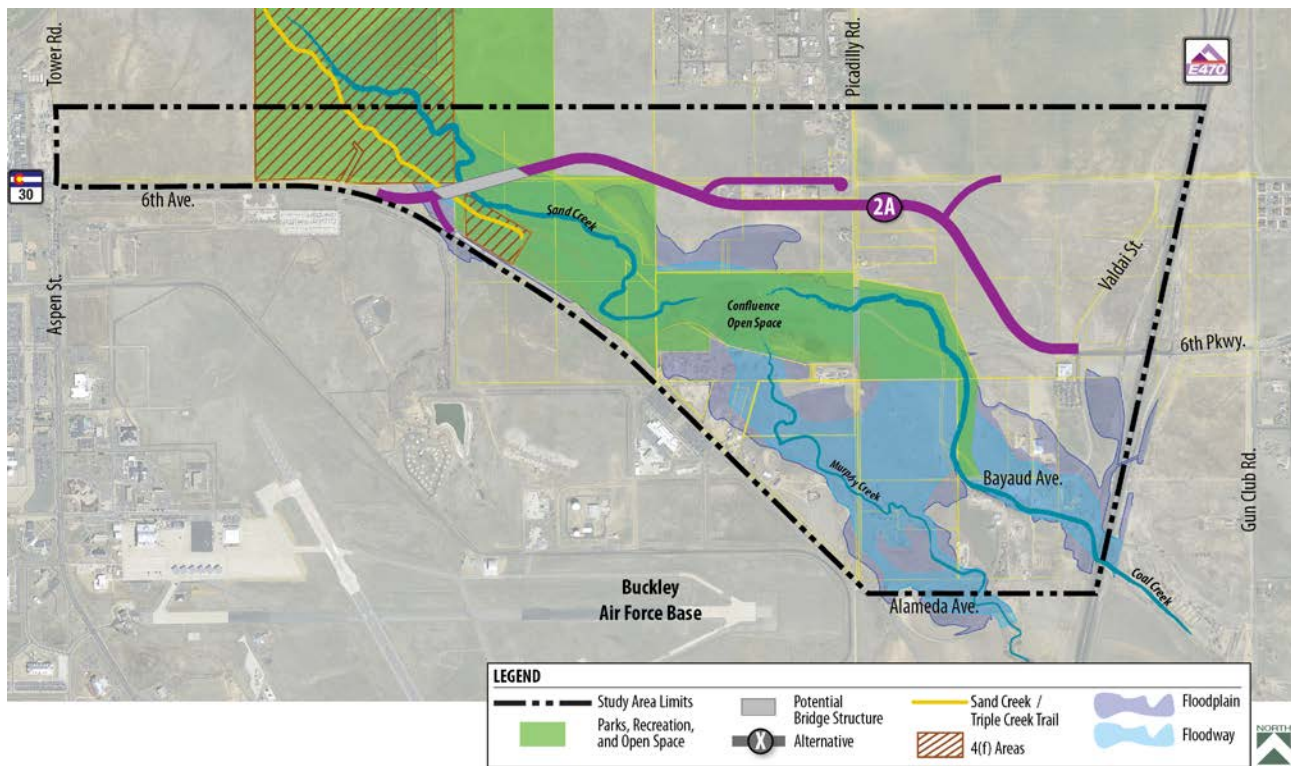
*for* Edward C. Nichols  
State Historic Preservation Officer



October 28, 2015

**RE: Invitation to Resource Agency Coordination Meeting for the City of Aurora 6<sup>th</sup> Avenue Parkway Extension Environmental Assessment Project**

The City of Aurora, in consultation with the Federal Highway Administration (FHWA) and the Colorado Department of Transportation Region 1 (CDOT), invite you to attend a resource agency coordination meeting for the 6<sup>th</sup> Avenue Parkway Extension Project Environmental Assessment (EA). The Proposed Action for this project involves the construction of a new roadway alignment on 6<sup>th</sup> Avenue between State Highway (SH) 30 and the E-470 interchange (see the purple line labeled 2A below).



This extension of 6<sup>th</sup> Avenue between SH 30 and the E-470 interchange would close an almost two-mile gap in the major surface arterial street system and would provide a reliable and efficient transportation system for vehicles and bicycles. This project has been identified in previous planning studies dating back as early as 1986 and has been identified as a priority project by the City of Aurora City Council.

The City of Aurora is leading this project and has retained Felsburg Holt & Ullevig (FHU) to prepare the EA, Preliminary Design, and Right of Way Plans for the Proposed Action Alternative. Technical Working Group (TWG) meetings have been held monthly since October of 2014. Agencies that are part of the TWG include CDOT, FHWA, Arapahoe County, Urban Drainage and Flood Control District, E-470, and Buckley Air Force

Troy Halouska  
Colorado Department of Transportation  
October 28, 2015  
Page 2

Base. We also have initially consulted with several resource agencies as part of the project, but this meeting serves as the official coordination meeting.

This resource agency coordination meeting is scheduled for **November 9, 2015 at 1:00 pm** at the City of Aurora offices located at 15151 East Alameda Parkway. The meeting will be held in the Sand Creek conference room on the south side of the 4<sup>th</sup> floor.

The purpose of the meeting is to introduce your agency to the project or re-introduce your agency to the project from prior communication, review the project's purpose and need, review the alternatives screening process, present the Proposed Action and No Action Alternative, obtain agency comment on any important environmental or regulatory issues, and comply with the National Environmental Policy Act. The meeting agenda will include:

- Introductions
- Project study area
- Review purpose and need
- Discuss alternatives screening process
- Present Proposed Action and No Action Alternative
- Project schedule
- Agency by agency discussion

Your agency's involvement is valuable as we proceed through the NEPA process. Please R.S.V.P. to Jessica Myklebust, by telephone at 303-721-1440 or by email at [Jessica.myklebust@fhueng.com](mailto:Jessica.myklebust@fhueng.com) by November 2, 2015. Please send a representative if you are unable to attend and/or forward this invitation to the appropriate individual if you feel you are not the correct recipient. If your agency is unable to participate, please let me know if you would like materials or a briefing provided separately.

I look forward to your participation, and thank you for your cooperation.

Sincerely,  
**FELSBURG HOLT & ULLEVIG**



Jessica Myklebust  
Senior Environmental Scientist

**Distribution List:**

CDOT  
Federal Highway Administration  
US Environmental Protection Agency  
US Fish and Wildlife Service  
US Army Corps of Engineers  
Colorado Parks and Wildlife  
Colorado Department of Public Health and Environment  
Colorado State Historic Preservation Office



Library and Cultural Services  
15151 E. Alameda Parkway, Ste.  
Aurora, Colorado 80012  
303.739.6661

December 11, 2015

Charles Attardo  
Region I Planning and Environmental Manager  
Colorado Department of Transportation (CDOT)

RE: **Determination of Eligibility and Effects**  
**6<sup>th</sup> Avenue Parkway Extension Project Environmental Assessment,**  
**City of Aurora, Arapahoe County**

Dear Mr. Attardo

Thank you for your invitation to provide comment on the above named project. In reviewing the information provided on the properties within the area of potential effects, and cross-referencing the addresses with available survey information and historic references, we concur with the findings provided by CDOT, and Felsburg Holt & Ullevig (FHU), within the document *Determination of Eligibility and Effects 6<sup>th</sup> Avenue Parkway Extension Project Environmental Assessment*. Our office agrees that none of the eight individual properties reviewed are currently eligible for local, state, or National Register of Historic Places (NRHP) listing. Therefore, no historic properties will be affected by the proposed 6<sup>th</sup> Avenue Parkway Extension Project.

Please feel free to contact me with any questions or comments at 303-739-6661.

A handwritten signature in cursive script that reads "Liz M Boyer".

Liz Boyer  
**Historic Preservation Specialist**  
Historic Sites and Preservation  
Aurora History Museum



U.S. Department  
of Transportation  
**Federal Highway  
Administration**

**Colorado Division**

January 11, 2016

12300 W. Dakota Ave., Ste. 180  
Lakewood, Colorado 80228  
720-963-3000

Mr. Wallace Coffey, Chairman  
Comanche Nation of Oklahoma  
P.O. Box 908  
Lawton, OK 73502

**Subject: Request for Section 106 Consultation, 6th Avenue Parkway Extension  
Environmental Assessment, Arapahoe County, Colorado**

Dear Mr. Coffey:

The Federal Highway Administration (FHWA) and Colorado Department of Transportation (CDOT), in cooperation with the City of Aurora, Colorado, are preparing an Environmental Assessment (EA) that will address the effects of a proposed extension to 6th Avenue Parkway. The project will add a nearly two-mile segment of 6th Avenue Parkway between State Highway 30 and the E-470 beltway interchange to close a gap in the arterial street system in the far eastern Denver metropolitan area (see enclosed map). The Proposed Action would provide an efficient transportation link, enhance and support existing and future multimodal connectivity, and provide transportation infrastructure for potential economic development and capacity for growth. Pursuant to the National Environmental Policy Act (NEPA) of 1969 and the Council on Environmental Quality (CEQ) implementing regulations (40 CFR 1500-1508), FHWA and CDOT are documenting the potential social, economic and environmental consequences of this action.

FHWA will serve as the lead agency for this undertaking and CDOT staff will facilitate the tribal consultation process. As a consulting party under the Section 106 regulations, you are offered the opportunity to identify concerns about cultural resources and comment on how the project might affect them. Further, if it is found that the project will impact cultural resources that are eligible for inclusion on the National Register of Historic Places (NRHP) and are of religious or cultural significance to your tribe, your role in the consultation process would include participation in resolving how best to avoid, minimize, or mitigate those impacts. It is our hope that by describing the proposed undertaking we can be more effective in protecting areas important to American Indian people.

The project area is located in a largely rural but increasingly suburban area of northwest Arapahoe County comprised of a short grass prairie environment. A survey to identify archaeological resources within the Area of Potential Effects was conducted in mid-2015. One isolated artifact attributed to Native American manufacture (a flaked stone scraping implement) was the only pre-contact resource documented; it is recommended as not eligible for listing on the NRHP. However, any information you may have regarding places or sites important to your tribe that are located in proximity to the project area would assist us in our efforts to comprehensively identify and evaluate historic properties.

We are committed to ensuring that tribal governments are informed of and involved in decisions that may impact places with cultural significance. If you have specific interest in the 6<sup>th</sup> Avenue Parkway Extension project, please complete and return the enclosed Consultation Interest Response Form to CDOT Native American consultation liaison Dan Jepson **within 30 days** via US Mail, fax or email, as listed at the bottom of that sheet. The 30-day period has been established to encourage your participation at this early stage in project development. Failure to respond within this time frame will not prevent your tribe from entering consultation at a later date. However, studies and decision making will proceed and it may be difficult to reconsider previous determinations or findings, unless significant new information is introduced.

If you have questions or concerns about the project or the role of your tribe in the consultation process, please contact Mr. Jepson at (303) 757-9631 or [daniel.jepson@state.co.us](mailto:daniel.jepson@state.co.us), or FHWA Colorado Division Environmental Program Manager Stephanie Gibson at (720) 963-3013 or [stephanie.gibson@dot.gov](mailto:stephanie.gibson@dot.gov).

Thank you for considering this request for consultation.

Sincerely,



John M. Cater, P.E  
Division Administrator

By: Stephanie Gibson  
Environmental Program Manager

Enclosures:

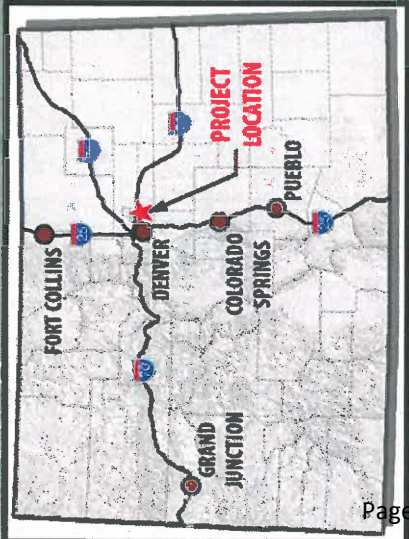
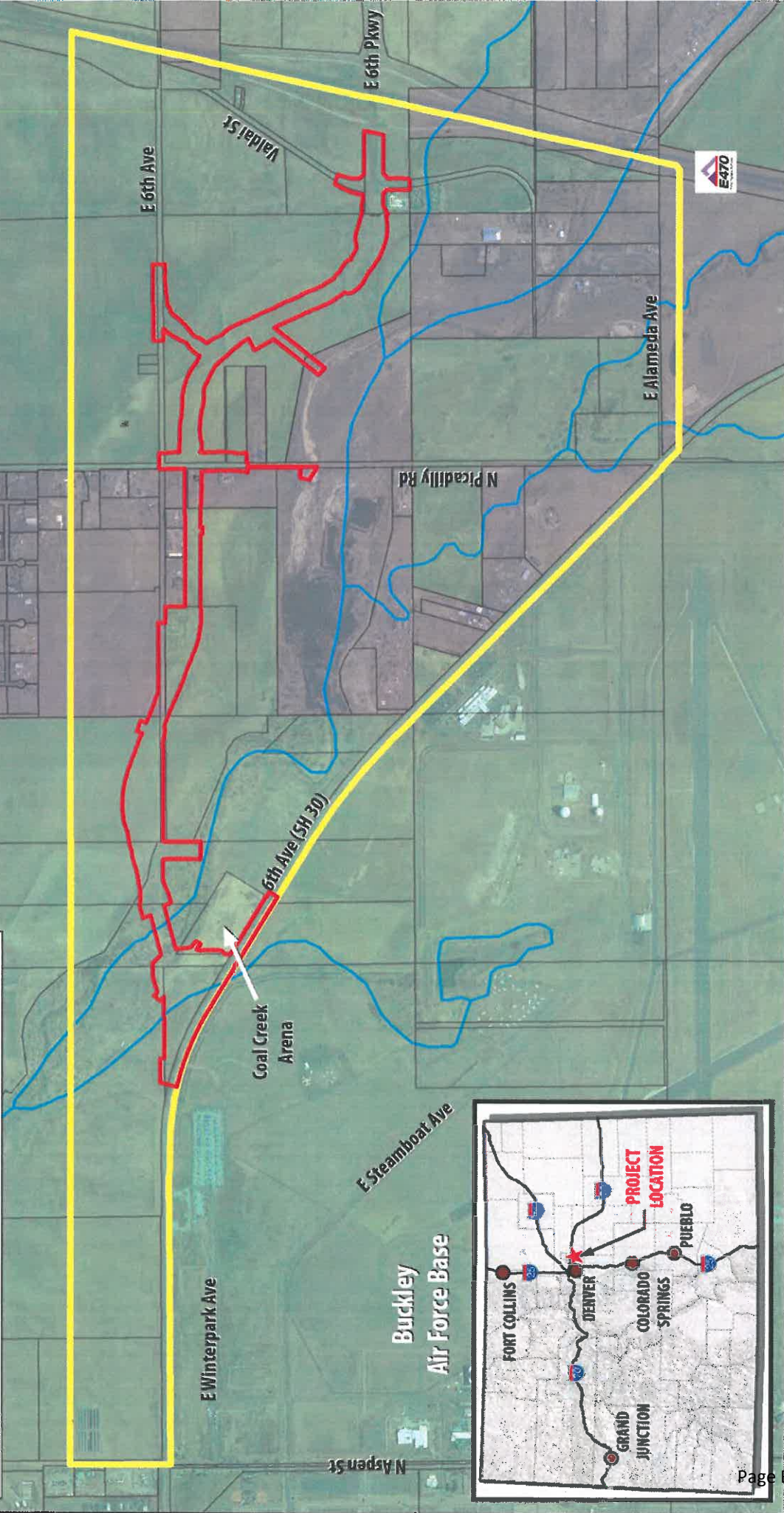
Map showing project area  
Consultation Interest Response Form

cc: S. Gibson & D. Egal, FHWA  
D. Jepson, CDOT EPB  
C. Coates, CDOT Region 1  
A. Monoessey & M. Murrow, NAGPRA Representatives Comanche Nation of Oklahoma



**Legend**

- Rivers/Streams
- Property Boundaries
- Proposed Action Footprint
- City of Aurora Boundary
- Project Study Area
- Unincorporated Arapahoe County



**6th Avenue Parkway Extension  
Proposed Action Location Map  
Aurora, CO**

**FEDERAL HIGHWAY ADMINISTRATION/COLORADO DEPARTMENT OF TRANSPORTATION  
SECTION 106 TRIBAL CONSULTATION INTEREST RESPONSE FORM**

**PROJECT:** 6<sup>th</sup> Avenue Parkway Extension Environmental Assessment

The \_\_\_\_\_ Tribe [**is** / **is not**] (*circle one*) interested in becoming a consulting party for the Colorado Department of Transportation project referenced above, for the purpose of complying with Section 106 of the National Historic Preservation Act and its implementing regulations (36 CFR 800). If your tribe will be a consulting party, please answer the questions below.

Signed: \_\_\_\_\_  
Name and Title

**CONSULTING PARTY STATUS [36 CFR §800.2(c)(3)]**

Do you know of any specific sites or places to which your tribe attaches religious and cultural significance that may be affected by this project?

Yes    No    If yes, please explain the general nature of these places and how or why they are significant (use additional pages if necessary). Locational information is not required.

**SCOPE OF IDENTIFICATION EFFORTS [36 CFR §800.4(a)(4)]**

Do you have information you can provide us that will assist us in identifying sites or places that may be of religious or cultural significance to your tribe?

Yes    No    If yes, please explain.

**CONFIDENTIALITY OF INFORMATION [36 CFR §800.11(c)]**

Is there any information you have provided here, or may provide in the future, that you wish to remain confidential?

Yes    No    If yes, please explain.

**Please complete and return this form within 30 days via US Mail, fax or Email to:**

Dan Jepson, Section 106 Native American Liaison  
Colorado Department of Transportation  
Environmental Programs Branch  
4201 E. Arkansas Ave., Shumate Bldg.  
Denver, CO 80222  
FAX: (303) 757-9445  
Email: [daniel.jepson@state.co.us](mailto:daniel.jepson@state.co.us)

**TRIBAL MAILING LIST**  
**6<sup>th</sup> Ave. Parkway Extension EA**

<b>Tribal Chair (Primary Contact):</b>	<b>Send Copy of Letter and Attachments to:</b>
Mr. Lyman Gui, Chairman Apache Tribe of Oklahoma P.O. Box 1330 Anadarko, OK 73005	N/A
Mr. Eddie Hamilton, Governor Cheyenne and Arapaho Business Committee Cheyenne and Arapaho Tribes of Oklahoma P.O. Box 38 Concho, OK 73022	Mr. Henry Little Bird, Sr., Arapaho Director Cultural Heritage Program Cheyenne and Arapaho Tribes of Oklahoma P.O. Box 203 Geary, OK 73040  Ms. Karen Little-Coyote, Cheyenne Director Cultural Heritage Program Cheyenne and Arapaho Tribes of Oklahoma P.O. Box 145 Concho, OK 73022
Mr. Wallace Coffey, Chairman Comanche Nation of Oklahoma P.O. Box 908 Lawton, OK 73502	Mr. Anthony Monoessey & Ms. Margaret Murrow NAGPRA Representatives Comanche Nation of Oklahoma P.O. Box 908 Lawton, OK 73502
Ms. Amber Toppah, Chairwoman Kiowa Business Committee Kiowa Tribe of Oklahoma P.O. Box 369 Carnegie, OK 73015	Ms. Amie Tah-bone, NAGPRA Representative Kiowa Tribe of Oklahoma P.O. Box 369 Carnegie, OK 73015
Mr. Dean Goggles, Chairman Northern Arapaho Business Council Northern Arapaho Tribe P.O. Box 396 Fort Washakie, WY 82514	Ms. Yufna Soldier Wolf, THPO Northern Arapaho Tribe P.O. Box 396 Ft. Washakie, WY 82514
Mr. Llevando Fisher, President Northern Cheyenne Tribal Council Northern Cheyenne Tribe P.O. Box 128 Lame Deer, MT 59043	Mr. James Walksalong, THPO Northern Cheyenne Tribe P.O. Box 128 Lame Deer, MT 59043
Mr. W. Bruce Pratt, Interim President Pawnee Nation of Oklahoma P.O. Box 470 Pawnee, OK 74058	N/A
<b>CDOT Region &amp; Consultant (Send copies of one letter and the mailing list to):</b>	
Carol Coates, CDOT Region 1 Environmental	
Mr. Thor Gjelsteen Felsburg, Holt & Ullevig 6300 South Syracuse, Ste 600 Centennial, CO 80111	



# COMANCHE NATION



Colorado Department of Transportation  
Attn: Stephanie Gibson  
12300 W. Dakota Ave., Ste. 180  
Colorado 80228

February 10, 2016

Re: Request for Section 106 Consultation, 6<sup>th</sup> Avenue Parkway Extension  
Environmental Assessment, Arapahoe County, Colorado

Dear Ms. Gibson:

In response to your request, the above reference project has been reviewed by staff of this office to identify areas that may potentially contain prehistoric or historic archeological materials. The location of your project has been cross referenced with the Comanche Nation site files, where an indication of "**No Properties**" have been identified.

Please contact this office at (580) 595-9960/9618 if you require additional information on this project.

This review is performed in order to identify and preserve the Comanche Nation and State cultural heritage, in conjunction with the State Historic Preservation Office.

Regards

Comanche Nation Historic Preservation Office  
Theodore E. Villicana, Resource Technician  
#6 SW "D" Avenue, Suite C  
Lawton, OK. 73502



**COLORADO**  
Department of Transportation  
Division of Transportation Development

Environmental Programs Branch  
4201 E. Arkansas Ave., Shumate Bldg.  
Denver, CO 80222-3400  
(303) 757-9281

January 26, 2016

Mr. Steve Turner, SHPO  
History Colorado  
1200 Broadway  
Denver, CO 80203

**SUBJECT:** Eligibility and Effects Determinations for Archaeological Resources, 6<sup>th</sup> Avenue Parkway Extension Environmental Assessment, Arapahoe County

Dear Mr. Turner:


Enclosed for your review is the archaeological resources inventory report and associated isolated find forms for the project referenced above. The Federal Highway Administration (FHWA) and Colorado Department of Transportation (CDOT), in cooperation with the City of Aurora, are preparing an Environmental Assessment (EA) that will address the effects of a proposed extension to 6<sup>th</sup> Avenue Parkway. The project will add a nearly two-mile segment of 6<sup>th</sup> Avenue Parkway between State Highway 30 and the E-470 beltway interchange to close a gap in the major surface arterial street system in the Aurora metropolitan area. The Proposed Action would provide an efficient transportation link, enhance and support existing and future multimodal connectivity, and provide transportation infrastructure for potential economic development and capacity for growth. Note that an inventory of built environment resources was conducted independently, and consultation for those properties will be completed separately.

Survey of the Area of Potential Effects (APE) was conducted by Alpine Archaeological Consultants, Inc., under contract to Felsburg, Holt and Ullevig, on behalf of CDOT. The inventory resulted in the documentation of two isolated finds (5AH3446 and 5AH3447); two previously recorded resources within the APE (5AH1546, a prehistoric isolate, and 5AH695, a historic wagon road) could not be relocated and are presumed to have been destroyed. Both isolates are recommended as not eligible for the National Register of Historic Places, and therefore the project results in a finding of *no historic properties affected*.

Detailed information regarding the project is contained in the accompanying report and IF forms. We request your concurrence with the eligibility and effects findings as noted herein. As outlined in the report, a small portion of the APE includes lands administered by the US Air Force (a non-contiguous parcel of Buckley Air Force Base that the City of Aurora is presently in negotiations to purchase). We are coordinating the Section 106 findings with the Air Force, as appropriate.

If you have questions or require additional information in order to complete your review, please contact CDOT Senior Staff Archaeologist Dan Jepson at (303) 757-9631 or [daniel.jepson@state.co.us](mailto:daniel.jepson@state.co.us).

Very truly yours,

  
for Jane Hann, Manager  
Environmental Programs Branch

Enclosures: Survey report & IF forms

cc: C. Coates, CDOT Region 1  
J. Myklebust, FHU



January 29, 2016

Jane Hann, Manager  
Environmental Programs Branch  
Colorado Department of Transportation  
4201 E. Arkansas Ave., Shumate Building  
Denver, CO 80222-3400

Re: Eligibility and Effects Determinations for Archaeological Resources, 6<sup>th</sup> Avenue Parkway Extension Environmental Assessment, Arapahoe County (CHS #68573)

Dear Ms. Hann:

Thank you for your correspondence dated January 26, 2016 and received on January 28, 2016 by our office regarding the consultation of the above-mentioned project under Section 106 of the National Historic Preservation Act (Section 106).

After review of the provided information, our previous agreement with the proposed Area of Potential Effects (APE) remains. After review of the provided survey information, we concur that resources 5AH.3446 and 5AH.3447 are not eligible for the National Register of Historic Places.

After review of the scope of work and the assessment of adverse effect, we concur with the finding of *no historic properties affected* [36 CFR 800.4(d)(1)] under Section 106 for resources 5AH.3446 and 5AH.3447.

If unidentified archaeological resources are discovered during construction, work must be interrupted until the resources have been evaluated in terms of the National Register criteria, 36 CFR 60.4, in consultation with this office.

We request being involved in the consultation process with the local government, which as stipulated in 36 CFR 800.3 is required to be notified of the undertaking, and with other consulting parties. Additional information provided by the local government or consulting parties might cause our office to re-evaluate our eligibility and potential effect findings.

Please note that our compliance letter does not end the 30-day review period provided to other consulting parties. If we may be of further assistance, please contact Jennifer Bryant, our Section 106 Compliance Manager, at (303) 866-2673 or [jennifer.bryant@state.co.us](mailto:jennifer.bryant@state.co.us).

Sincerely,

A handwritten signature in blue ink, appearing to read "Steve Turner".

Steve Turner, AIA  
State Historic Preservation Officer



February 23, 2016

Charles Attardo  
Region 1 Planning and Environmental Manager  
Colorado Department of Transportation, Region 1  
2000 South Holly Street  
Denver, CO 80222

Re: Section 106 Determinations of Eligibility and Effects: 6<sup>th</sup> Avenue Parkway Extension Project  
Environmental Assessment (EA), City of Aurora, Arapahoe County (CHS #68573)

Dear Mr. Attardo:

Thank you for your correspondence dated February 18, 2016 and received on February 22, 2016 regarding the review of the above-mentioned project under Section 106 of the National Historic Preservation Act (Section 106). Our previous concurrence with the proposed Area of Potential Effects (APE) remains.

After review of the provided survey information, we concur that the following resources are not eligible for the National Register of Historic Places.

- 5AH.169
- 5AH.695
- 5AH.3451
- 5AH.3452
- 5AH.3453
- 5AH.3454
- 5AH.3455
- 5AH.3456

After review of the revised scope of work and assessment of adverse effect, we concur with the finding of *no historic properties affected* [36 CFR 800.4(d)(1)] for the following resources.


- 5AH.169
- 5AH.695
- 5AH.3451
- 5AH.3452
- 5AH.3453
- 5AH.3454
- 5AH.3455
- 5AH.3456

Should unidentified archaeological resources be discovered in the course of the project, work must be interrupted until the resources have been evaluated in terms of the National Register eligibility criteria (36 CFR 60.4) in consultation with our office pursuant to 36 CFR 800.13. Also, should the consulted-upon scope of the work change please contact our office for continued consultation under 36 CFR 800.

We request being involved in the consultation process with the local government, which as stipulated in 36 CFR 800.3 is required to be notified of the undertaking, and with other consulting parties. Additional information provided by the local government or consulting parties might cause our office to re-evaluate our eligibility and potential effect findings. Please note that our compliance letter does not end the 30-day review period provided to other consulting parties.

If we may be of further assistance, please contact Jennifer Bryant, our Section 106 Compliance Manager, at (303) 866-2673.

Sincerely,

  
Steve Turner, AIA  
State Historic Preservation Officer

Northern Cheyenne Tribe  
Tribal Historic Preservation Office  
P.O. Box 128  
Lame Deer, Montana 59043  
Phone: (406) 477-4839/4838 Fax: (406) 477-6388  
Email: teanna.limpy@cheyennenation.com  
**Native American Consultation Request Form**

**Site name/Project:** U.S. Department of Transportation, Federal Highway Administration / Request for Section 106 Consultation, 6<sup>th</sup> Avenue Parkway Extension Environmental Assessment

**TCNS Notification ID Number/Location:** Arapahoe County, Colorado

**Phone Number:** (303) 757-9631

**Contact Person:** Dan Jepson

**Email Address:** Daniel.jepson@state.co.us

**Fax Number:**

**Request Additional Info:** photo copies of isolated find, as well as cultural survey of findings. (report)

**Adverse Effect:** \_\_\_\_\_

**No Adverse Effect:** \_\_\_\_\_

**Comment:** Suggest creating buffer zone around isolated finding to ensure possible sub-surface will not be disturbed.

**Interest:** \_\_\_\_\_

**Defer To:** \_\_\_\_\_

**Exceptions:** If archaeological materials or human remains are encountered during construction, the State Historic Preservation Office and applicable Native American Tribes should be notified.

  
Signature

2/23/16  
Date

Teanna Limpy, T.H.P.O. Director

Printed Name (Signing Official)

**Date Received:** 1/25/16

**Response Deadline:** 30 days



# United States Department of the Interior



FISH AND WILDLIFE SERVICE  
COLORADO FIELD OFFICE/LAKEWOOD  
P.O. BOX 25486, DENVER FEDERAL CENTER  
DENVER, COLORADO 80225-0486

IN REPLY REFER TO:  
TAILS: 06E24000-2016-I-0669

JUN 07 2016

Francesca Tordonato  
Colorado Department of Transportation, Region 1  
Planning and Environmental  
425A Corporate Circle  
Golden, Colorado 80401

Dear Ms. Tordonato:

On May 19, 2016, the U.S. Fish and Wildlife Service (Service) received your May 12, 2016, report regarding construction of the 6<sup>th</sup> Avenue Parkway Extension from SH30 to the E-470 Tollway in Aurora, Arapahoe County, Colorado, and its potential effects on the threatened Preble's meadow jumping mouse (*Zapus hudsonius preblei*) and Ute ladies'-tresses orchid (*Spiranthes diluvialis*). The project is receiving funding from the Federal Highway Administration. Our review was performed consistent with our authority under the Endangered Species Act of 1973 (ESA), as amended (16 U.S.C. 1531 *et seq.*). No critical habitat has been designated in the project area; therefore, none will be affected. The project site lies within the Preble's meadow jumping mouse Denver Block-Clearance Zone so the species will not be considered further here.

The 6<sup>th</sup> Avenue Parkway will be extended for approximately 2 miles along a new alignment connecting the existing 6<sup>th</sup> Avenue/SH30 to the west with the existing 6<sup>th</sup> Avenue Parkway at E-470 to the east. The new alignment will consist of six lanes with a raised median and sidewalks. Immediately east of the new intersection with existing 6<sup>th</sup> Avenue/SH30, the roadway will cross over Sand Creek and its associated floodplain/floodway, and over the Triple Creek Trail on a six-lane bridge. The bridge will be approximately 680 feet in length and provide a minimum 10-foot vertical clearance over the Triple Creek Trail and will allow wildlife connectivity along Sand Creek. In addition to these transportation elements, the project includes stormwater drainage with water quality features for roadway runoff and will accommodate offsite stormwater flows.

The project area is located to the east of the Buckley Air Force Base, west of high-and low-density single-family residences and commercial businesses, west of E-470 and surrounding agricultural lands, north of agricultural lands, and south of recreational ball fields, agricultural lands, and single-family residences, at an elevation of approximately 5,500 feet. The natural characteristics of this ecoregion have been replaced by development; however, a blue grama-buffalo grass association has persisted in many upland areas. The natural vegetation consists primarily of native and non-native grasses, weedy forbs, shrubs, and trees throughout the stream

and riparian corridors and in open areas in and adjacent to the project. Species present include plains cottonwood (*Populus deltoides*), lanceleaf cottonwood (*P. acuminata*), narrowleaf cottonwood (*P. angustifolia*), black locust (*Robinia pseudoacacia*), sandbar willow (*Salix interior*), rubber rabbitbrush (*Ericameria nauseosa*), chokecherry (*Prunus virginiana*), American plum (*P. americana*), common snowberry (*Symphoricarpos albus*), smooth brome (*Bromus inermis*), Scotch thistle (*Onopordum acanthium*), and poison hemlock (*Conium maculatum*). Upland tree species included non-native ornamental and noxious trees.

Habitat for the Ute ladies'-tresses orchid occurs below 6,500 feet in elevation and consists of wet meadows associated with perennial stream terraces, floodplains, and oxbows. Previous surveys have not identified the species in the project area, although suitable habitat is present, specifically along Sand Creek, Coal Creek, and Murphy Creek. You propose to survey for the species prior to construction. Because previous surveys for the Ute ladies'-tresses orchid have been negative, impacts are expected to be discountable and insignificant; however, consultation will need to be reinitiated if the species is detected during pre-construction surveys.

Given your habitat and project descriptions, the Service finds the report acceptable and concurs with your determination that the impacts resulting from the proposed project are not likely to adversely affect the continued existence of the Ute ladies'-tresses orchid. No critical habitat has been designated in the project area; therefore, none will be affected.

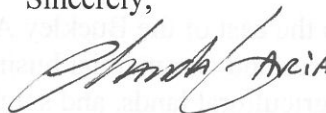
Bald Eagle nest-building activities have been observed in the immediate project area. Surveys for winter roosts and nests will be conducted up to and during project construction, and close coordination with the Service and Colorado Parks and Wildlife will occur to identify measures to eliminate or reduce impacts.

Please note that reinitiation of consultation will be required if:

1. New information reveals effects of the action that may affect listed species or critical habitat in a manner or to an extent not considered in this opinion;
2. The action is subsequently modified in a manner that causes an adverse effect to the listed species or critical habitat that was not considered in this opinion; or
3. A new species is listed or critical habitat designated that may be affected by the action.

If the proposed project has not commenced within one year, please contact the Colorado Field Office to request an extension. We appreciate your submitting this report to our office for review and comment. If the Service can be of further assistance, please contact Alison Deans Michael of my staff at (303) 236-4758.

Sincerely,



Drue L. DeBerry **ACTING FOR**  
Acting Colorado Field Supervisor

cc: CDOT, HQ (Jeff Peterson)  
Michael

Ref: Alison\H:\My Documents\CDOT 2007+\Region 1\6th\_Avenue\_Parkway\_extension\6th\_Ave\_Parkway\_extension\_ULTO\_concur.docx





COA Project: R-1656

FHU Project: 114046-01

## 6<sup>th</sup> Avenue Parkway Extension

### List of Agency and Public Involvement Activities

Date	Activity
September 10, 2014	Pre-NTP Coordination Meeting
September 19, 2014	Kickoff Meeting
September 23, 2014	Purpose and Need Meeting
September 25, 2014	Internal Kickoff Meeting
October 6, 2014	PMT Meeting #1
October 7, 2014	Internal Environmental Kick-off Meeting
October 7, 2014	Public Involvement Coordination Meeting
October 9, 2014	Technical Working Group (TWG) Meeting #1
October 12, 2014	Preliminary Engineering Kickoff Meeting
October 16, 2014	Public Involvement Coordination Meeting #4
October 29, 2014	Aurora Parcel – PROS Land Restrictions Meeting
November 3, 2014	PMT Meeting #2
November 12, 2014	Public Involvement Coordination Meeting #2
November 13, 2014	TWG Meeting #2
November 25, 2014	Public Involvement Coordination Meeting #3
December 8, 2014	PMT Meeting #3
December 11, 2014	TWG Meeting #3
December 16, 2014	Aurora Parcel – PROS Land Restrictions Meeting #2
January 7, 2015	Trust for Public Lands (TPL) Coordination Meeting
January 8, 2015	TWG Meeting #4
January 12, 2015	PMT Meeting #4
January 14, 2015	Internal Meeting
January 21, 2015	Traffic Meeting #1
January 26, 2015	Greater Outdoors Colorado (GOCO) Meeting
January 27, 2015	City of Aurora's Open Space Advisory Board Meeting
January 28, 2015	Floodway and Floodplain Meeting
January 29, 2015	Traffic Meeting #2
February 2, 2015	Arapahoe County Open Space Meeting
February 3, 2015	FHWA Section 4(f) Meeting Minutes

**6<sup>th</sup> Avenue Parkway Extension**  
**List of Agency and Public Involvement Activities**  
**Page 2**

Date	Activity
February 9, 2015	PMT Meeting #5
February 12, 2015	TWG Meeting #5
February 13, 2015	Baseline Inventory Report Meeting with ERO
March 9, 2015	PMT Meeting #6
March 11, 2015	Traffic Meeting #3
March 12, 2015	CDOT Meeting
March 12, 2015	TWG Meeting #6
March 13, 2015	Coordination Meeting with Lend Lease
April 7, 2015	PMT Meeting #7
April 9, 2015	TWG Meeting #7
April 15, 2015	Internal Meeting
April 27, 2015	Conceptual Drainage, Water Quality, and Costs Meeting
April 28, 2015	Urban Drainage Flood Control District (UDFCD) Meeting
May 5, 2015	City of Aurora PROS – Proposed Action Meeting
May 6, 2015	ARCO Proposed Action Meeting
May 11, 2015	PMT Meeting #8
May 13, 2015	E-470 – Proposed Action Meeting
May 13, 2015	FHWA – Proposed Action Meeting
May 14, 2015	Section 6(f) Meeting
May 14, 2015	TWG Meeting #8
June 4, 2015	Greater Outdoors Colorado Meeting
June 8, 2015	PMT Meeting #9
June 11, 2015	Drainage Meeting
June 22, 2015	Profile Meeting
July 13, 2015	PMT Meeting #10
August 10, 2015	PMT Meeting #11 – CANCELLED
August 17, 2015	Drainage Meeting
September 8, 2015	PMT Meeting #12
September 10, 2015	TWG Meeting #10
September 25, 2015	Traffic Meeting #4
October 5, 2015	PMT Meeting #13
October 8, 2015	TWG Meeting #11
October 15, 2015	Schedule Meeting
October 28, 2015	CDOT Section 4(f)/Section 6(f) Meeting
October 28, 2015	Drainage Meeting

**6<sup>th</sup> Avenue Parkway Extension**  
**List of Agency and Public Involvement Activities**  
**Page 3**

Date	Activity
October 28, 2015	Section 6(f) Meeting #2
November 9, 2015	Resource Agency Coordination Meeting
November 9, 2015	PMT Meeting #14
November 12, 2015	ROW Meeting
November 12, 2015	TWG Meeting #12
December 4, 2015	ROW Meeting #2
December 7, 2015	PMT Meeting #15
December 10, 2015	TWG Meeting #13
December 18, 2015	Coordination Meeting with Kathleen Mansfield-Hall
January 11, 2016	PMT Meeting #16
January 14, 2016	TWG Meeting #14
February 3, 2016	Colorado Parks and Wildlife Section 6(f) Meeting
April 14, 2016	TWG Meeting #15
June 1, 2016	USFWS meeting for Bald Eagle coordination

The Project Management Team (PMT) consisted of representatives of the following:

- City of Aurora
- Arapahoe County
- Felsburg Holt & Ullevig

The Technical Working Group (TWG) consisted of representatives of the following:

- City of Aurora
- Arapahoe County
- CDOT R1 and Environmental Programs Branch
- FHWA
- Buckley AFB
- E-470 Public Highway Authority
- Felsburg Holt & Ullevig (FHU) team and sub consultants