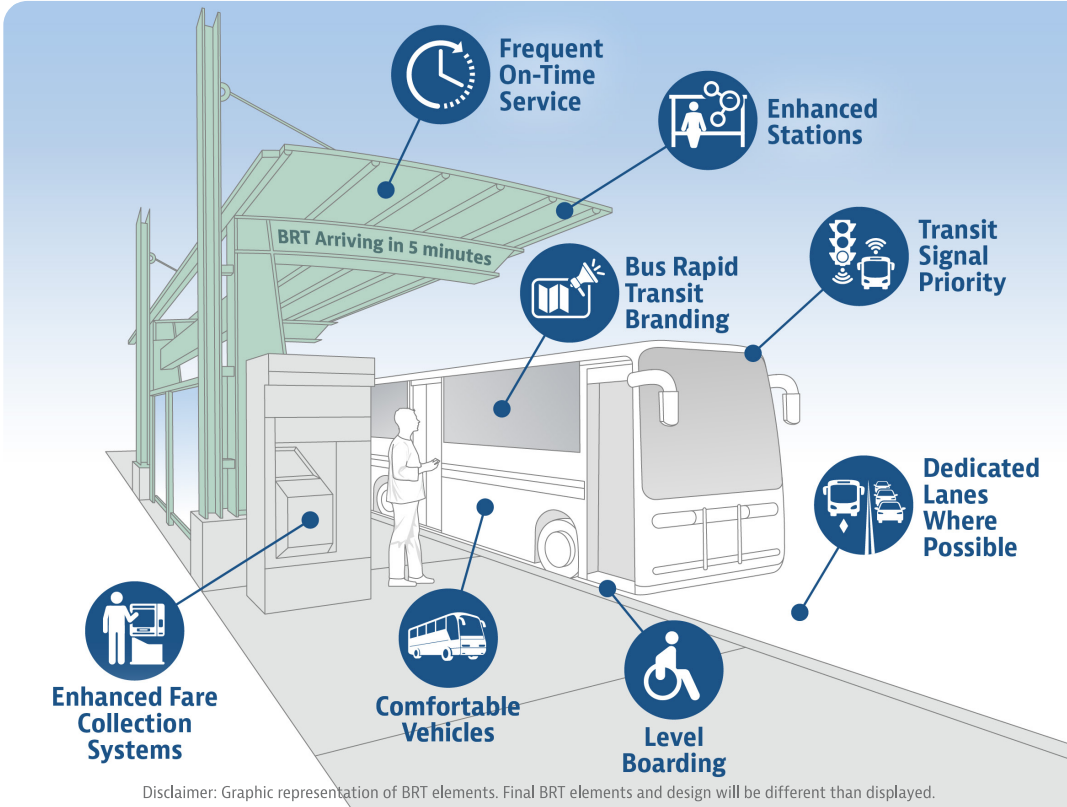


Why BRT?

The Colorado Department of Transportation plans to improve travel along Federal Boulevard with attractive and efficient BRT service. The BRT routes will enhance transportation options on state highways and improve connections to the region's many modes of travel. BRT achieves high-quality service by combining the capacity and efficiency of a light rail with the flexibility, cost, and simplicity of a bus. BRT will improve transit for existing riders and add high-quality service for new riders.

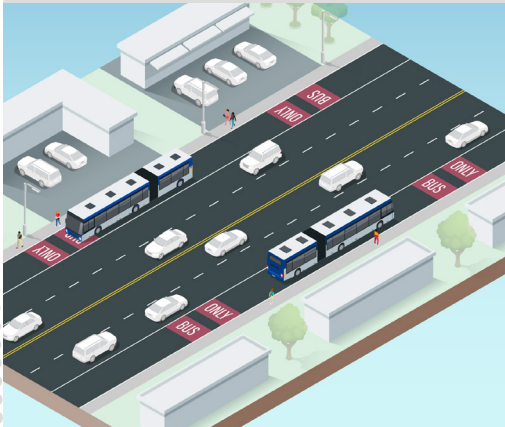
What does BRT look like?



Enhanced Stations

Enhanced stations typically include design elements that allow passengers to more efficiently get on and off the bus, and technology elements so that passengers waiting at the stop understand when their next bus will arrive.

Side Running Bus Lanes



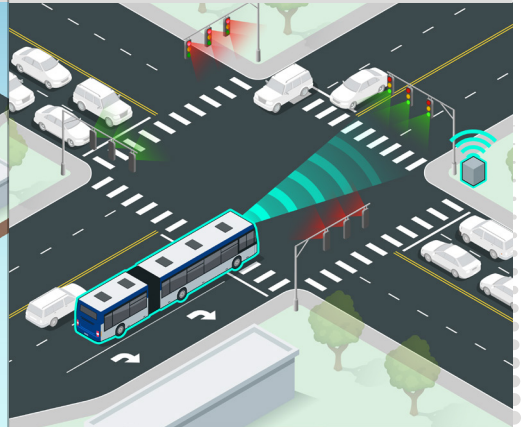
Side running bus lanes allow buses to move through the corridor without delays from general traffic congestion. Right-turning vehicles are allowed to use the bus lane to turn right.

Bypass Lanes and Queue Jumps



Bypass lanes and queue jumps are located at targeted intersections where buses typically experience significant delay. They provide priority to buses to reduce delay experienced.

Transit Signal Priority



Transit signal priority allows buses to communicate with traffic signals as they approach an intersection. This allows the bus to proceed through an intersection more efficiently.

SCAN FOR PROJECT WEBSITE

