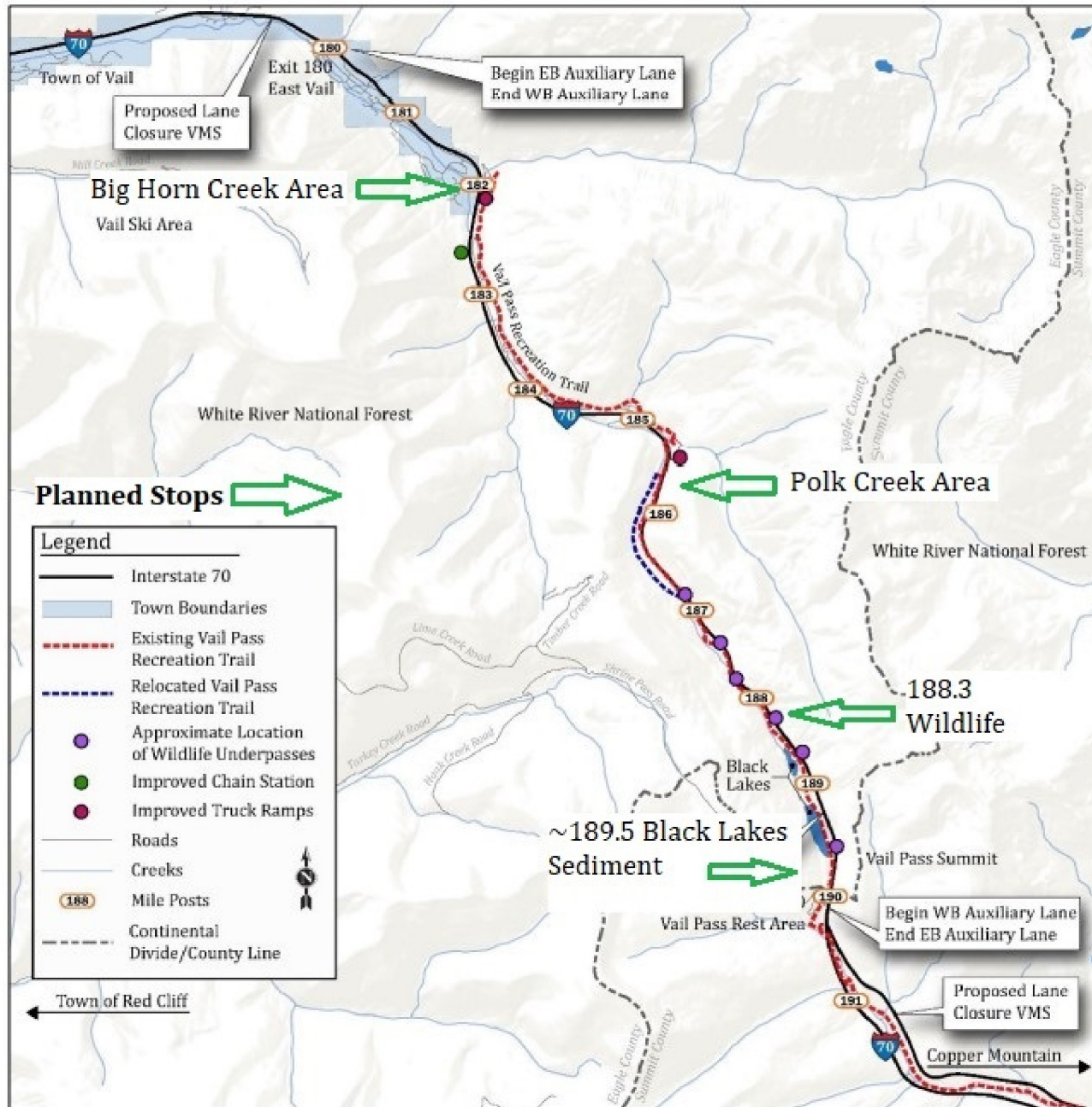
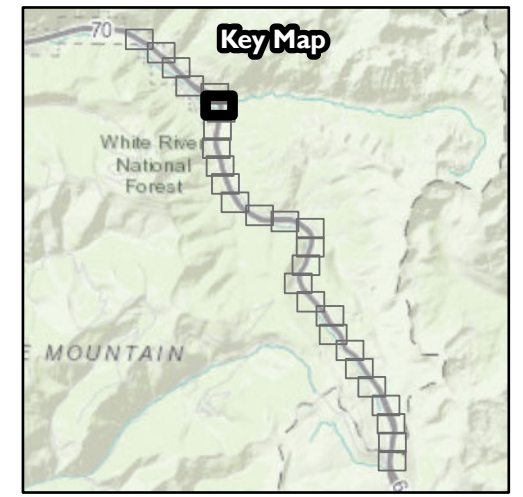
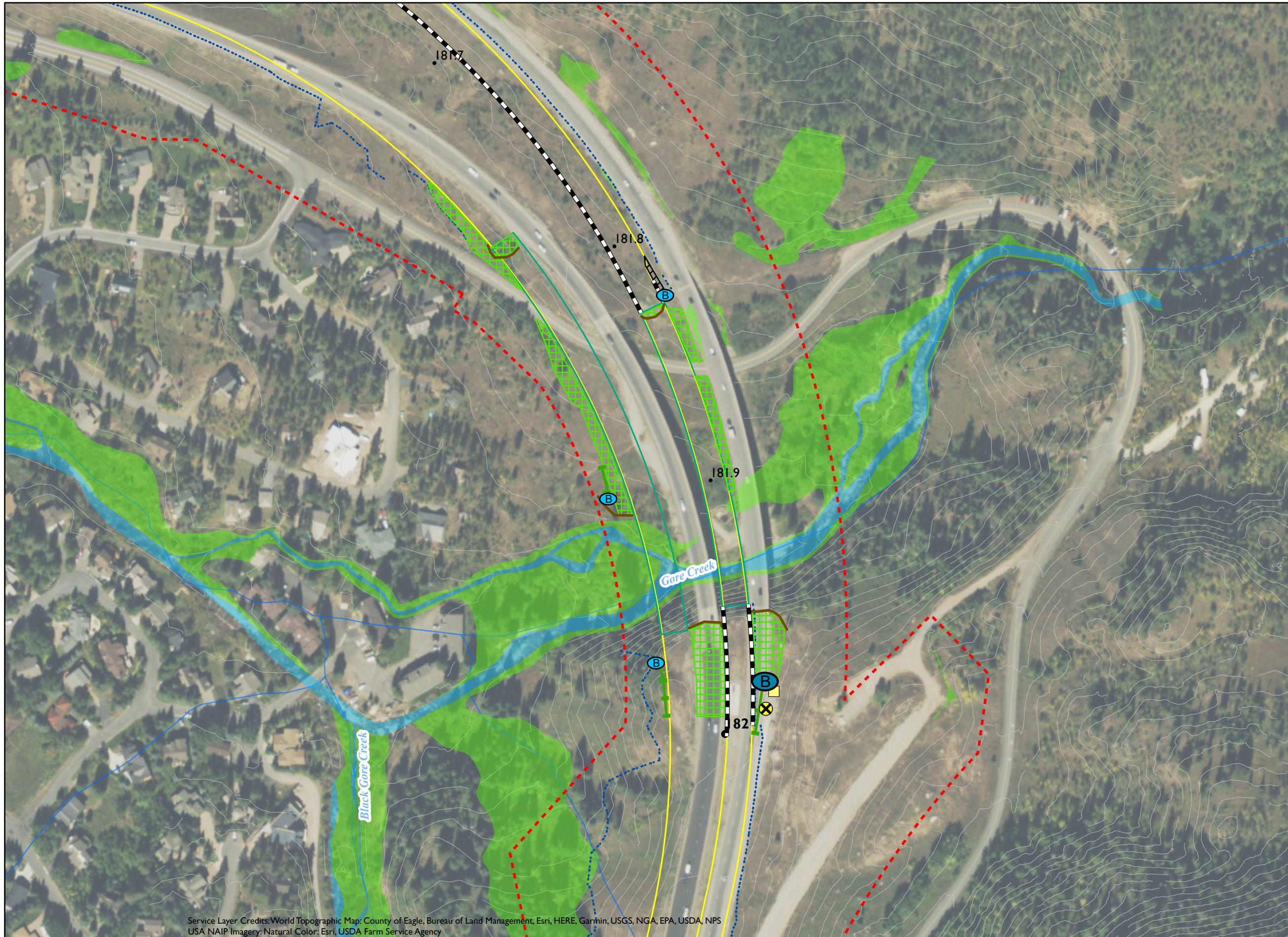


West Vail Pass SWEEP ITF #6: Field Trip Agenda
September 27, 1021

1. Meet at recreation parking at MP 190 exit near rest area at top of Vail Pass at 12:30 pm.
Consolidate rides. (CDOT requires that masks be worn when more than one person is in a vehicle.)
 2. Stop #1: Black Lakes area. Receive handouts. Discuss Sediment Control Measures near Black Lakes.
 3. Stop #2: Wildlife Crossing at MP 188.3. Discuss CMs to protect crossing.
 4. Stop #3: Polk Creek Area. Discuss moving bridges to east, away from Black Gore Creek, rundowns to reduce erosion, sediment ponds and sand windrow management below the bridges.
 5. Stop #4: Big Horn Road Area: Discuss SCAP Map Book and more windrow management under bridges.
 6. Return to parking area at MP 190.
- Finish by 3:00 pm.

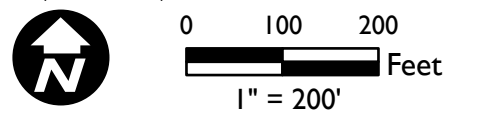
SWEEP ITF Field Trip Stops





- Infrastructure***
- Milepost
 - Milepost (tenth)
 - - - ROW - Existing
 - - - Existing Contours - 10ft
 - - - Trail Alignment
 - - - Top of Cut/Toe of Fill
 - Bridges
 - Guardrails
 - Walls
 - Edge of Road
 - Jersey Barriers
- Environmental***
- Wildlife Underpasses
 - Open Water
 - Wetland
- Existing Control Measures**
- Sediment Basins
- Ⓟ Small
 - Ⓛ Medium
 - Ⓛ Large
 - Modified Type D Inlets
 - ⊗ Sediment Basins impacted by Project construction
- Proposed Control Measures**
- Sediment Basins
- Ⓟ Small
 - Ⓛ Medium
 - Ⓛ Large
 - Slope Revegetation
 - Vegetated Berms
 - Shoulder Paving
 - Modified Type D Inlets
 - ⊕ Polishing Wetlands
 - Coir Logs
 - Valley Pan/Gutter
 - Ditches/Swales
 - Drainage Rundowns
 - ⊗ Clean Water Diversions

* Infrastructure and environmental layers shown are from the EA (CDOT, 2020f).



WEST VAIL PASS SCAP MAPBOOK
 I-70 West Vail Pass Safety and Operations Improvements
 Sediment Control Action Plan
 Eagle County, Colorado

Site Location: Eagle County, Colorado

Data Sources: XXX

Drawn By: JAF

Page of

Pinyon Project Number: I/20-0670-02; CDOT Project Number XXX

Reviewed By: MJS/HH

Date: 9/24/2021

Document Path: Z:\PROJECTS\2020\I20067002 Vail Pass Final Design\Figures\ArcPro\Vail Pass.aprx

Service Layer Credits: World Topographic Map: County of Eagle, Bureau of Land Management, Esri, HERE, Garmin, USGS, NGA, EPA, USDA, NPS
 USA NAIP Imagery: Natural Color: Esri, USDA Farm Service Agency