

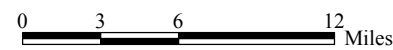
EAGLE RIVER WATERSHED Study Area

BLUE RIVER WATERSHED Study Area

CLEAR CREEK WATERSHED Study Area

RESOURCE DESCRIPTION		Past, Present, and Future Development Activities in Corridor										Range of Direct Impacts Associated with Build Alternatives			
		Geographic Areas (Aggregated HUC 6 Watersheds)	Acres	COUNTY AND TOWN DEVELOPMENT			FOREST MANAGEMENT, RECREATION, OPEN SPACE		ROADS AND HIGHWAYS		Existing I-70 (Footprint and Roadside Cut and Fills)				
				Planned Urban Development (Zoning and FLUM*)	Planned Rural Development (Zoning and FLUM*)	Total	Special Management Areas (Wilderness, Nonmotorized, Open Space)	Active Recreation Management Areas (Developed Recreation, Motorized, Ski Areas)	Roads (Not Including I-70)		miles			acres	miles
CRITICAL WILDLIFE HABITATS	Forested Vegetation	Eagle River	239,620	20,020	25,830	45,850	109,000	83,450	427	6,472					Analyzed by species, not by watershed basin
		Blue River	135,260	6,040	8,070	14,110	96,090	24,530	188	2,850					
		Clear Creek	100,300	8,370	34,550	42,920	23,450	32,220	290	4,396					
				8%	34%	43%	23%	32%	4%						
		Total	475,180	34,430	68,450	102,880	0%	0%	0%						
CRITICAL WILDLIFE HABITATS	Non-Forested Vegetation	Eagle River	78,250	19,120	21,120	40,240	29,410	10,250	273	4,138					Analyzed by species, not by watershed basin
		Blue River	48,810	1,990	3,650	5,640	26,940	15,910	98	1,485					
		Clear Creek	52,440	4,570	19,460	24,030	16,950	11,270	142	2,152					
				9%	37%	46%	32%	21%	4%						
		Total	179,500	25,680	44,230	69,910	73,300	37,430	513	7,776	4%				

- Forested Land
- Grassland, Forbland, and Other
- Watershed Study Area
- Surrounding Counties



SCALE - 1:468,000 or 1" = 39,000'

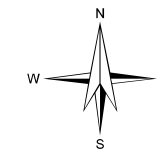
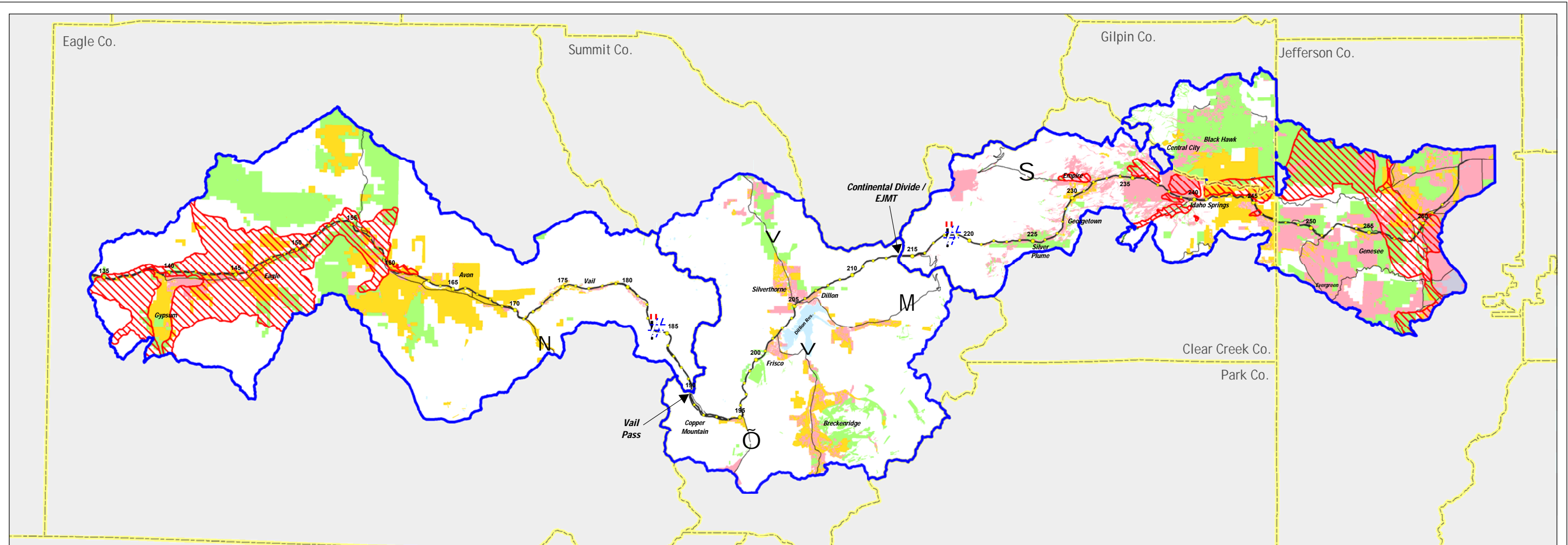


Figure 4-5. Regional Impacts to Forested and Non-Forested Vegetation

Chapter 4. Cumulative Impacts Analysis



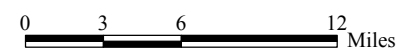
EAGLE RIVER WATERSHED Study Area

BLUE RIVER WATERSHED Study Area

CLEAR CREEK WATERSHED Study Area

Past, Present, and Future Development Activities in Corridor												
Geographic Areas (Aggregated HUC 6 Watersheds)	Acres	COUNTY AND TOWN DEVELOPMENT				FOREST MANAGEMENT, RECREATION, OPEN SPACE		ROADS AND HIGHWAYS			Range of Direct Impacts Associated with Build Alternatives	
		Historic and Existing (Before 1-70 and 2000 Eras)	Planned Urban Development (Zoning and FLUM*)	Planned Rural Development (Zoning and FLUM*)	Total	Special Management Areas (Wilderness, Nonmotorized, Open Space)	Active Recreation Management Areas (Developed Recreation, Motorized, Ski Areas)	Roads (Not Including I-70)		Existing I-70 (Footprint and Roadside Cut and Fills)		
		acres percent	acres percent	acres percent	acres percent	acres percent	acres percent	miles percent	acres percent	miles percent		acres percent
Deer severe winter range and winter concentration areas (acres)	Eagle River	4,946 8%	5,911 9%	9,049 14%	19,906 30%	12,782 20%	29,989 46%	240 6%	3,638	No data on historic habitat displacement associated with construction of I-70		Analyzed by species, not by watershed basin 4 to 122 0% to 0.11%
	Blue River	0 0%	0 0%	0 0%	0 0%	0 0%	0 0%	0 0%	0			
	Clear Creek	4,956 12%	7,447 18%	23,372 56%	35,775 85%	3,027 7%	7,407 18%	212 8%	3,247			
	Total	9,902 9%	13,358 12%	32,421 30%	55,681 52%	15,809 15%	37,396 35%	452 6%	6,885			

- Existing Development (includes mining - Clear Creek Co.)
- Planned Urban Development
- Planned Rural Development
- Forest Management / Open Spaces
- Key Deer Habitats
- Watershed Study Area
- Surrounding Counties



SCALE - 1:468,000 or 1" = 39,000'

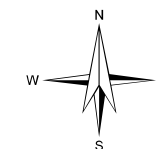
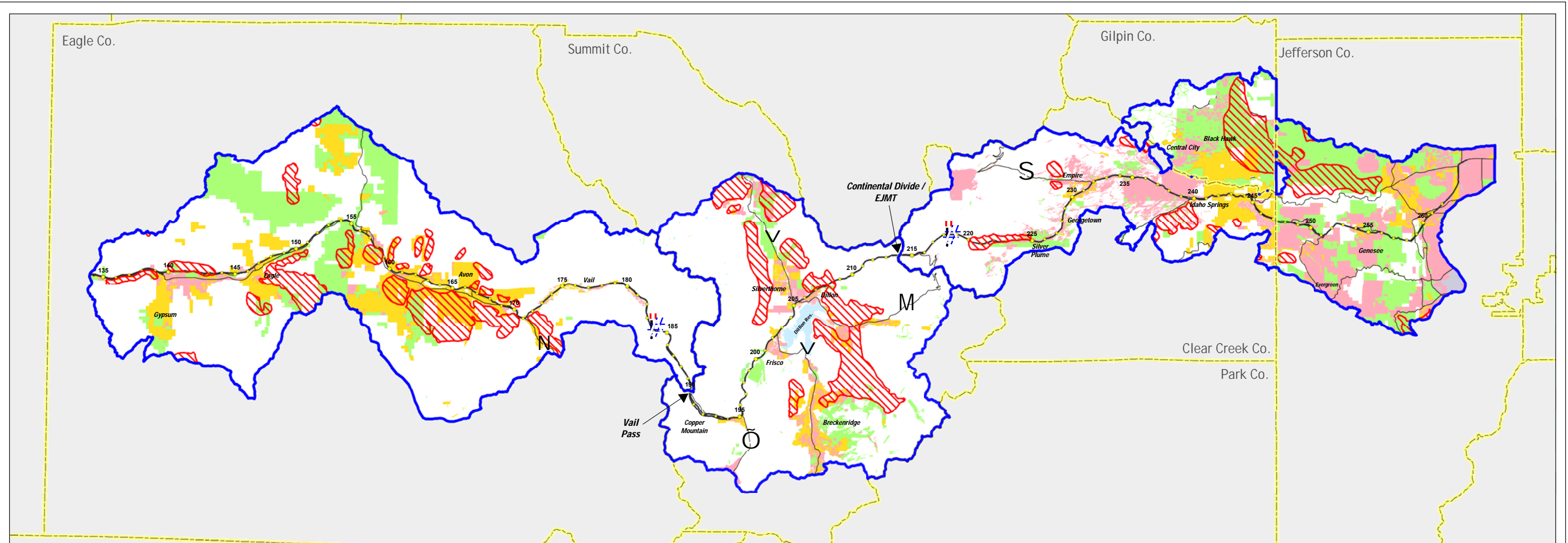


Figure 4-6. Regional Impacts to Key Deer Habitats



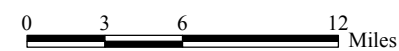
EAGLE RIVER WATERSHED Study Area

BLUE RIVER WATERSHED Study Area

CLEAR CREEK WATERSHED Study Area

Past, Present, and Future Development Activities in Corridor												
Geographic Areas (Aggregated HUC 6 Watersheds)	Acres	COUNTY AND TOWN DEVELOPMENT				FOREST MANAGEMENT, RECREATION, OPEN SPACE		ROADS AND HIGHWAYS			Range of Direct Impacts Associated with Build Alternatives acres (unless otherwise noted) percent	
		Historic and Existing (Before 1-70 and 2000 Eras)	Planned Urban Development (Zoning and FLUM*)	Planned Rural Development (Zoning and FLUM*)	Total	Special Management Areas (Wilderness, Nonmotorized, Open Space)	Active Recreation Management Areas (Developed Recreation, Motorized, Ski Areas)	Roads (Not Including I-70)		Existing I-70 (Footprint and Roadside Cut and Fills)		
		acres percent	acres percent	acres percent	acres percent	acres percent	acres percent	miles percent	acres percent	miles percent		acres percent
Elk severe winter range, winter concentration areas, calving areas (acres)	Eagle River	33,840	1,431 4%	8,201 24%	5,305 16%	14,937 44%	10,912 32%	7,806 23%	230 10%	3,486 6%	No data on historic habitat displacement associated with construction of I-70	Analyzed by species, not by watershed basin 15 to 62 0.02% to 0.07%
	Blue River	29,598	1,320 4%	1,535 5%	2,713 9%	5,568 19%	22,510 76%	2,108 7%	40 2%	606 6%		
	Clear Creek	27,099	734 3%	1,798 7%	17,091 63%	19,623 72%	3,221 12%	5,956 22%	104 6%	1,680 6%		
	Total	90,537	3,485 4%	11,534 13%	25,109 28%	40,128 44%	36,643 40%	15,870 18%	374 6%	5,773 6%		

- Existing Development (includes mining - Clear Creek Co.)
- Planned Urban Development
- Planned Rural Development
- Forest Management / Open Spaces
- Key Elk Habitats
- Watershed Study Area
- Surrounding Counties



SCALE - 1:468,000 or 1" = 39,000'

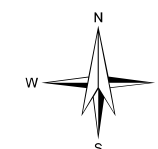
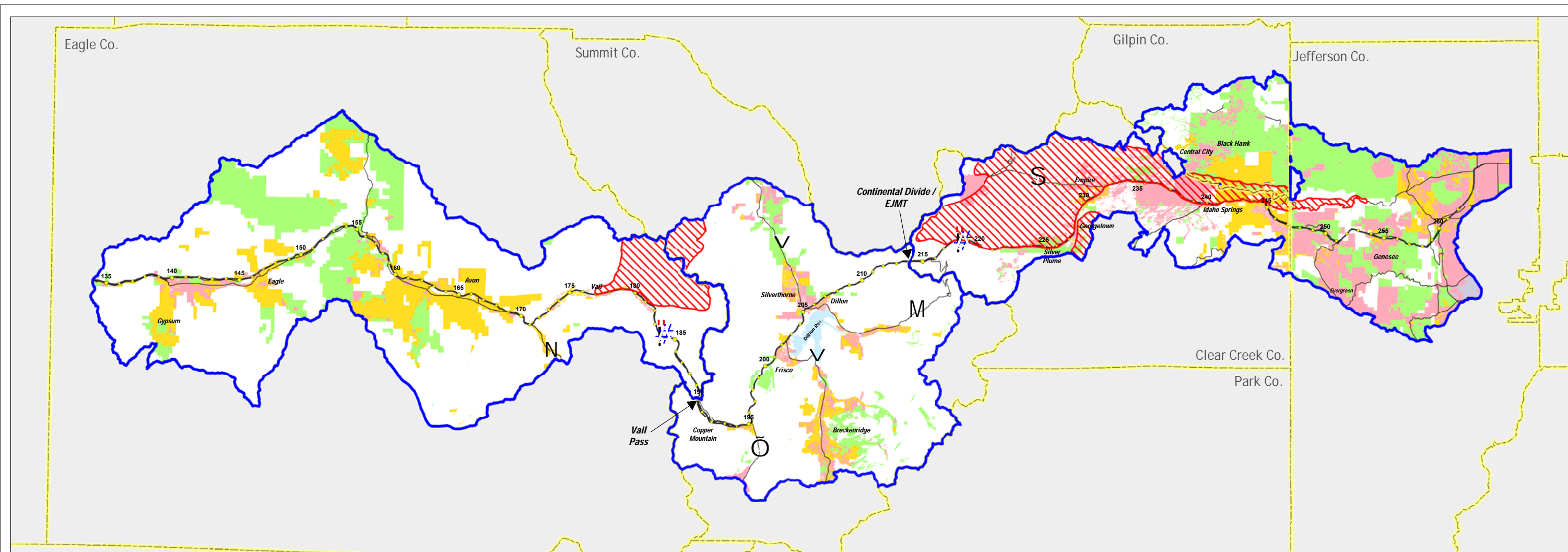


Figure 4-7. Regional Impacts to Key Elk Habitats



EAGLE RIVER WATERSHED Study Area

BLUE RIVER WATERSHED Study Area

CLEAR CREEK WATERSHED Study Area

Past, Present, and Future Development Activities in Corridor												
Geographic Areas (Aggregated HUC 6 Watersheds)	Acres	COUNTY AND TOWN DEVELOPMENT				FOREST MANAGEMENT, RECREATION, OPEN SPACE			ROADS AND HIGHWAYS		Range of Direct Impacts Associated with Build Alternatives	
		Historic and Existing (Before 1-70 and 2000 Eras)	Planned Urban Development (Zoning and FLUM*)	Planned Rural Development (Zoning and FLUM*)	Total	Special Management Areas (Wilderness, Nonmotorized, Open Space)	Active Recreation Management Areas (Developed Recreation, Motorized, Ski Areas)	Roads (Not Including I-70)		Existing I-70 (Footprint and Roadside Cut and Fills)		
		acres percent	acres percent	acres percent	acres percent	acres percent	acres percent	miles percent	acres percent	miles percent		acres percent
Bighorn sheep summer range, winter range, lambing areas (acres)	Eagle River	72 0.5%	226 1.4%	53 0.3%	351 2.2%	15,532 99.8%	16 0.1%	4 0	61 0.4%	No data on historic habitat displacement associated with construction of I-70		Analyzed by species, not by watershed basin 67 to 262 0.08% to 0.30%
	Blue River	0 0%	0 0%	0 0%	0 0%	4,553 100%	0 0%	0 0%	0 0%			
	Clear Creek	927 1.4%	5,039 7.5%	2,961 4.4%	8,927 13.3%	27,716 41%	22,230 33%	204 4.6%	3,119 4.6%			
	Total	999 1%	5,265 6%	3,014 3%	9,278 11%	47,801 55%	22,249 25%	208 4%	3,180 4%			

- Existing Development (includes mining - Clear Creek Co.)
- Planned Urban Development
- Planned Rural Development
- Forest Management / Open Spaces
- Key Bighorn Sheep Habitats
- Watershed Study Area
- Surrounding Counties

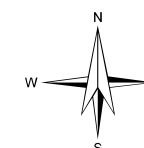
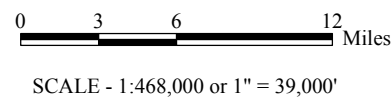
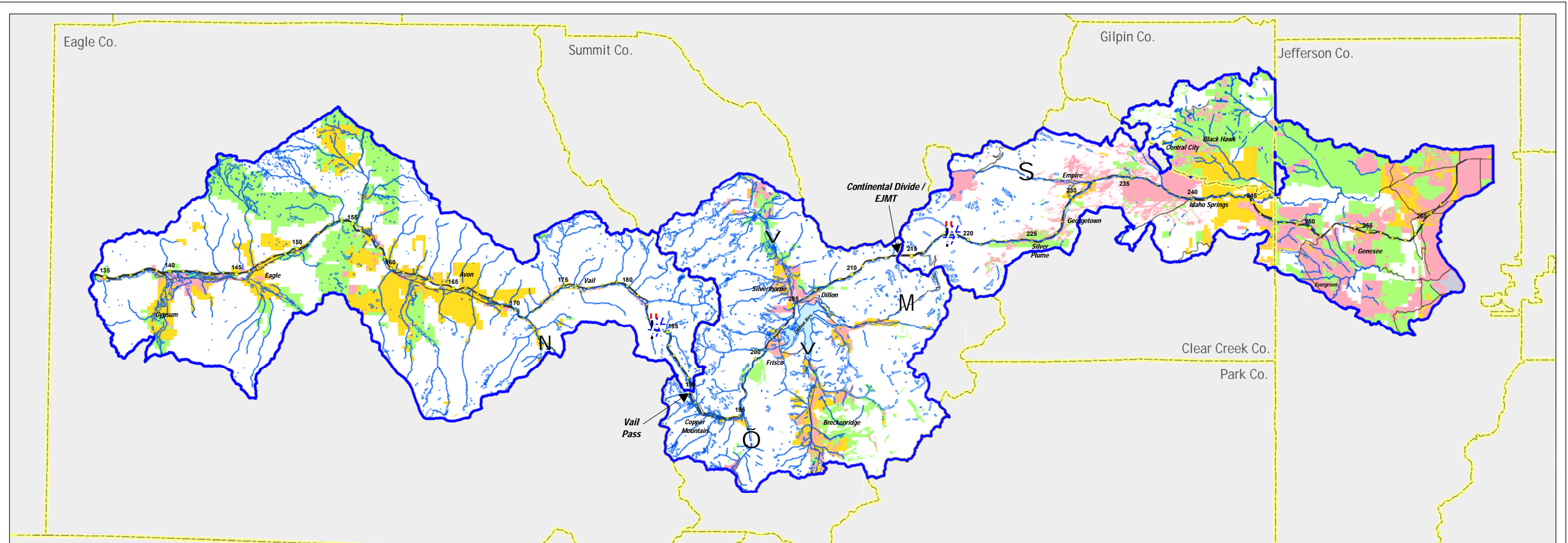


Figure 4-8. Regional Impacts to Key Bighorn Sheep Habitats



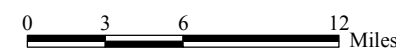
EAGLE RIVER WATERSHED Study Area

BLUE RIVER WATERSHED Study Area

CLEAR CREEK WATERSHED Study Area

Past, Present, and Future Development Activities in Corridor												
Geographic Areas (Aggregated HUC 6 Watersheds)	Acres	COUNTY AND TOWN DEVELOPMENT				FOREST MANAGEMENT, RECREATION, OPEN SPACE			ROADS AND HIGHWAYS			Range of Direct Impacts Associated with Build Alternatives
		Historic and Existing (Before I-70 and 2000 Eras)	Planned Urban Development (Zoning and FLUM*)	Planned Rural Development (Zoning and FLUM*)	Total	Special Management Areas (Wilderness, Nonmotorized, Open Space)	Active Recreation Management Areas (Developed Recreation, Motorized, Ski Areas)	Roads (Not Including I-70)		Existing I-70 (Footprint and Roadside Cut and Fills)		
		acres percent	acres percent	acres percent	acres percent	acres percent	acres percent	miles percent	acres percent	miles percent	acres percent	
Development within 200 feet of streams, open water, and wetlands (acres)	Eagle River	2,520 9%	4,674 17%	5,320 19%	12,513 46%	11,094 40%	3,913 14%	200 11%	3,031	7.9 0.8%	215	Analyzed in linear feet, not acres
	Blue River	2,072 8%	3,002 12%	2,814 11%	7,888 32%	12,332 50%	5,382 22%	130 8.0%	1,970	8.2 1.3%	319	
	Clear Creek	3,029 15%	3,203 24%	3,685 27%	11,412 85%	2,053 15%	2,822 21%	174 21%	2,857	15.5 3.4%	452	
	Total	6,622 10%	10,879 17%	11,819 18%	31,814 49%	25,479 39%	12,117 18%	504 12%	7,859	32 2%	986	

- Existing Development (includes mining - Clear Creek Co.)
- Planned Urban Development
- Planned Rural Development
- Forest Management / Open Spaces
- 200-foot Zone around Surface Water and Wetlands
- Watershed Study Area
- Surrounding Counties



SCALE - 1:468,000 or 1" = 39,000'

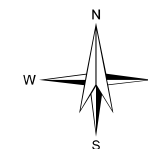


Figure 4-9. Regional Impacts to Surface Water and Wetlands