



Floyd Hill Project

Welcome

I-70 Floyd Hill Project Public Meeting

March 7, 2023



This evening we want you to walk away with a better understanding of these three points:

1

This project is sorely needed to address congestion, improve safety and update aging infrastructure.

2

There will be some short-term closures of I-70 for safety critical work, but the highway won't shut down for long periods of time and you'll be able to get to where you need to go.

3

Many individuals and organizations have been involved in helping CDOT plan this project, improve travel time reliability.



Floyd Hill Project

Early Projects Summary



Work on several Early Projects started in fall 2022 to improve mobility and safety along the I-70 Mountain Corridor.

- I-70 & Genesee Wildlife Underpass
- US 40 & Floyd Hill Roundabouts
- US 40 Empire Wildlife Overpass
- Pegasus Transit Shuttle Stop



Floyd Hill Project

Need for This Project

This project will:

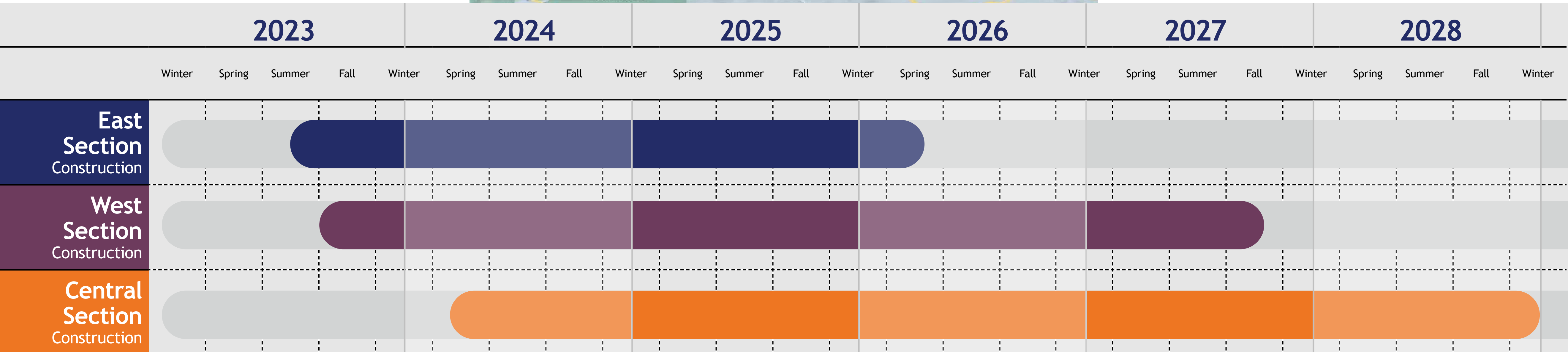
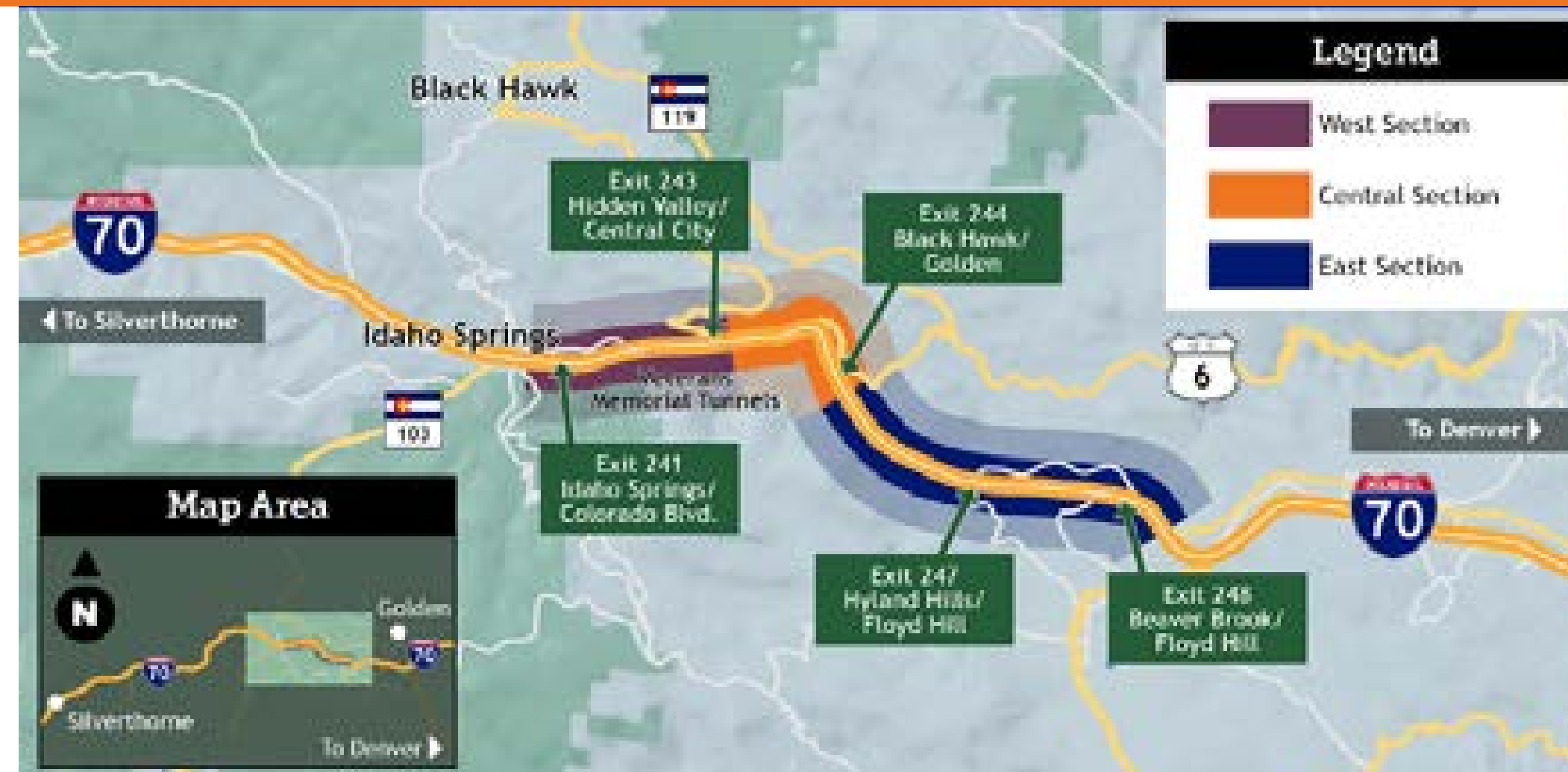
- Address congestion on I-70 at Floyd Hill to improve travel time reliability.
- Rebuild bridges due to age, wear and tear and heavy usage.
- Build a frontage road between US 6 and the Hidden Valley/Central City Parkway interchange and straighten curves on I-70 to improve safety.





Floyd Hill Project

Floyd Hill Construction Timeline





Floyd Hill Project

CMGC Process

Early involvement of the Construction Manager/General Contractor allows for:

- Input on design.
- Consideration of design innovations.
- Identification of potential construction risks.





Floyd Hill Project

Project Improvements

This project includes:

- Adding a third westbound travel lane in this two-lane bottleneck of I-70. This new lane will be a full-time tolled Express Lane.
- Constructing a frontage road between US 6 and the Hidden Valley/ Central City Parkway interchange.
- Adding an extended on-ramp from US 6 to eastbound I-70, giving trucks room to merge.
- Improving the Clear Creek Greenway trail.
- Implementing environmental mitigations to enhance safe wildlife movements, air and water quality, stream conditions and recreation.





Floyd Hill Project

Environmental Construction Mitigations

Mitigation commitments to minimize the project's impact on the surrounding environment include:

- Minimizing dust.
- Protecting sensitive water resources.
- Installing air quality monitors.
- Minimizing rockfall potential.





Floyd Hill Project

General Traffic Impacts

During construction, motorists can expect:

- Occasional traffic holds during rock blasting and rock scaling operations.
- Overnight lane closures.
- Temporary lane shifts.
- Periodic, temporary on- and off-ramp closures.
- Periodic, overnight detours in the I-70/US 6 interchange and short-term closures of I-70 for safety critical work.
- Temporary closures of the Clear Creek Greenway trail.





Floyd Hill Project

Keeping I-70 Moving

Efforts to keep I-70 moving during construction include:

- Keeping all lanes and ramps open during peak traffic hours.
- Ensuring lane closures are responsive to current traffic patterns.
- Innovating complex work above the roadway so it doesn't impede traffic.
- New roadway sections being built adjacent to current lanes to keep traffic moving.

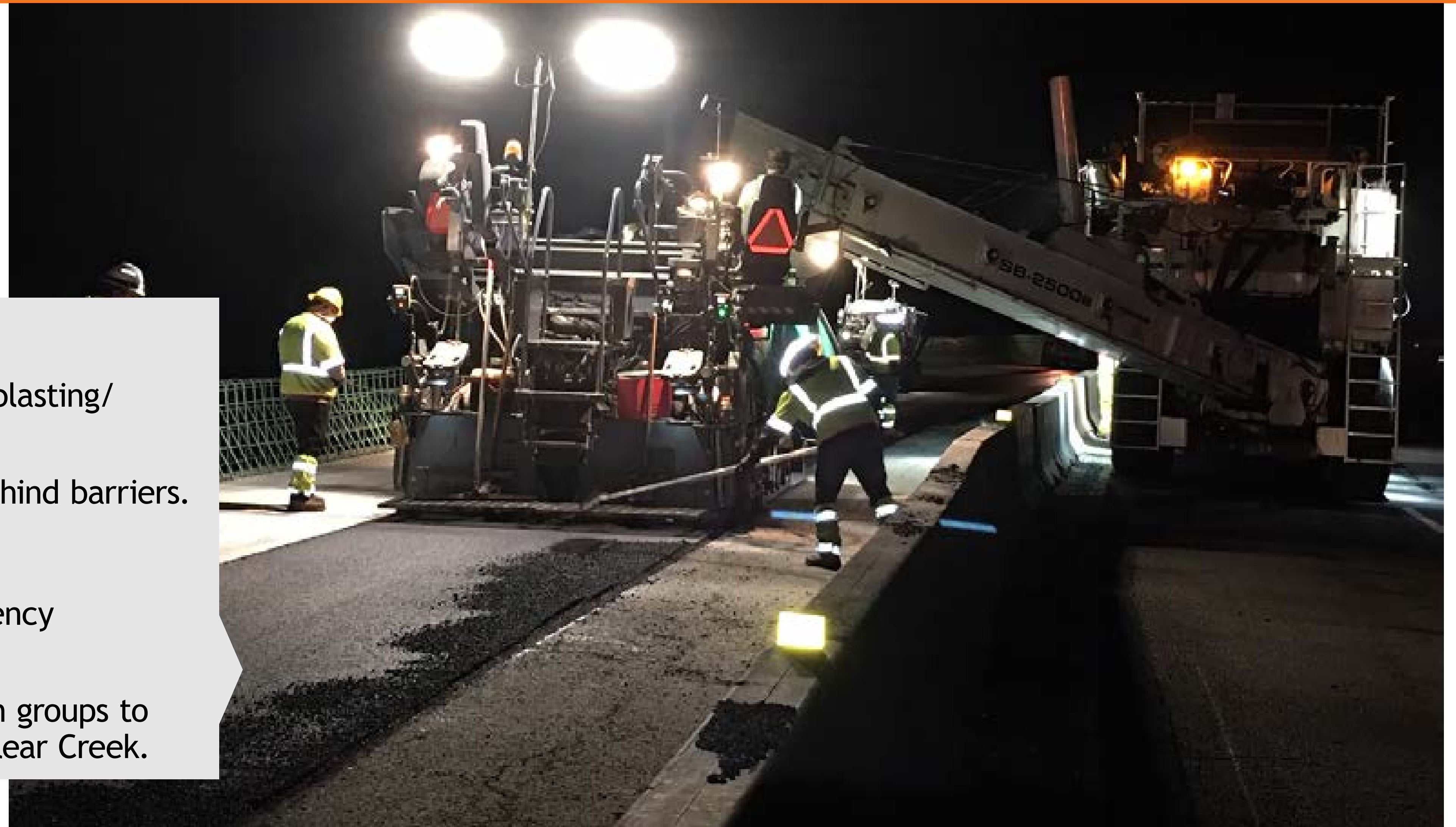




Floyd Hill Project

CDOT Safety Efforts

- Emergency pull off areas.
- Traffic stops during rock blasting/scaling.
- Construction activities behind barriers.
- Reduced speed limits.
- Coordination with emergency response agencies.
- Notifications to recreation groups to maintain safe access to Clear Creek.





Floyd Hill Project

East Section

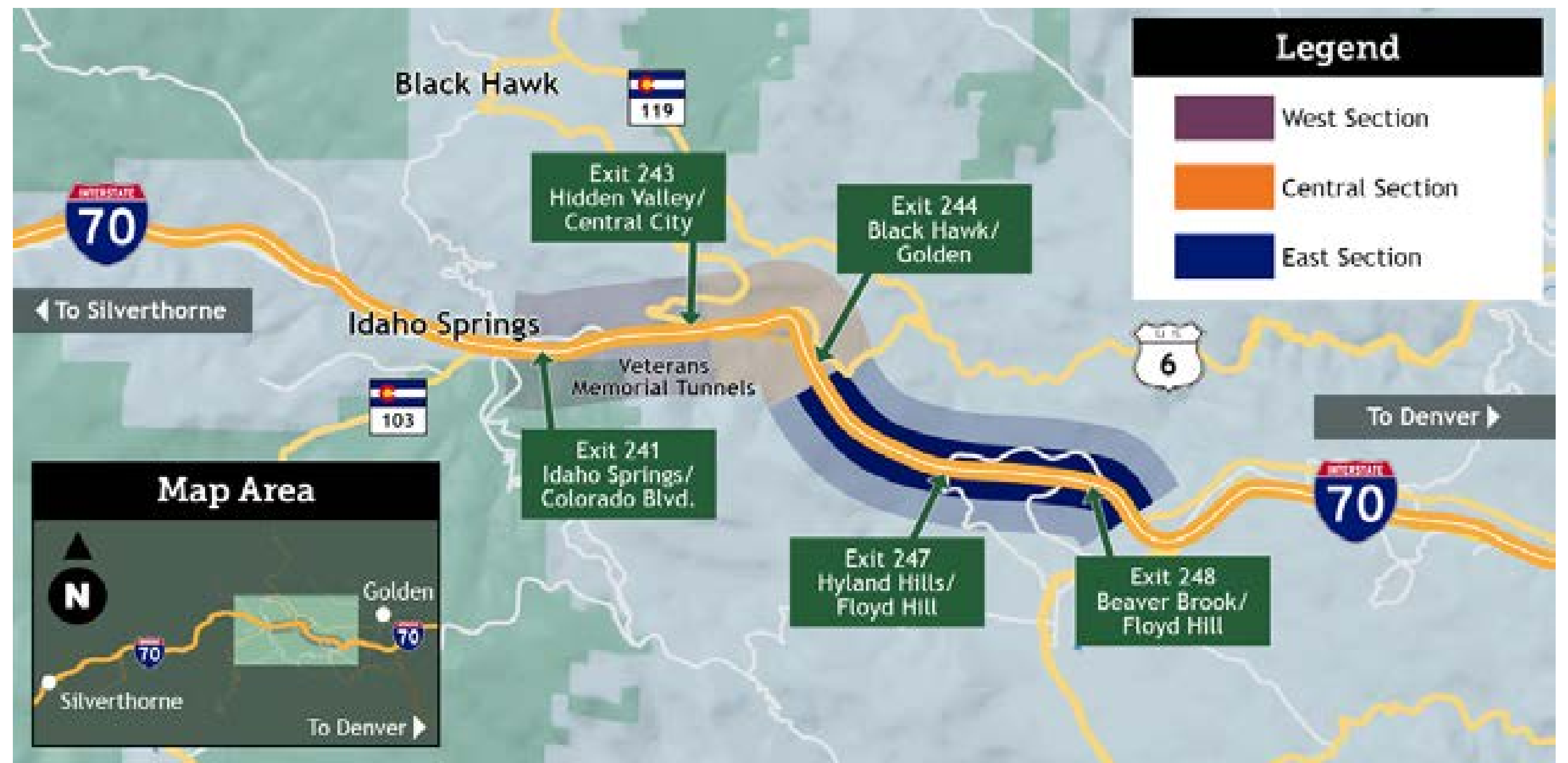
Overview:

- Improve operations by adding an extended on-ramp from US 6 to eastbound I-70, giving trucks room to merge.
- Improve drainage and add water quality features.
- Build a third travel lane on westbound I-70 that will operate as a full-time, tolled Express Lane from the top of Floyd Hill to the Veterans Memorial Tunnels.
- Install wildlife fencing between Hyland Hills/Floyd Hill (Exit 247) and Soda Creek Road (east of Exit 248).

East Section

(CR 65 to bottom of Floyd Hill)

Construction Start: Early summer 2023





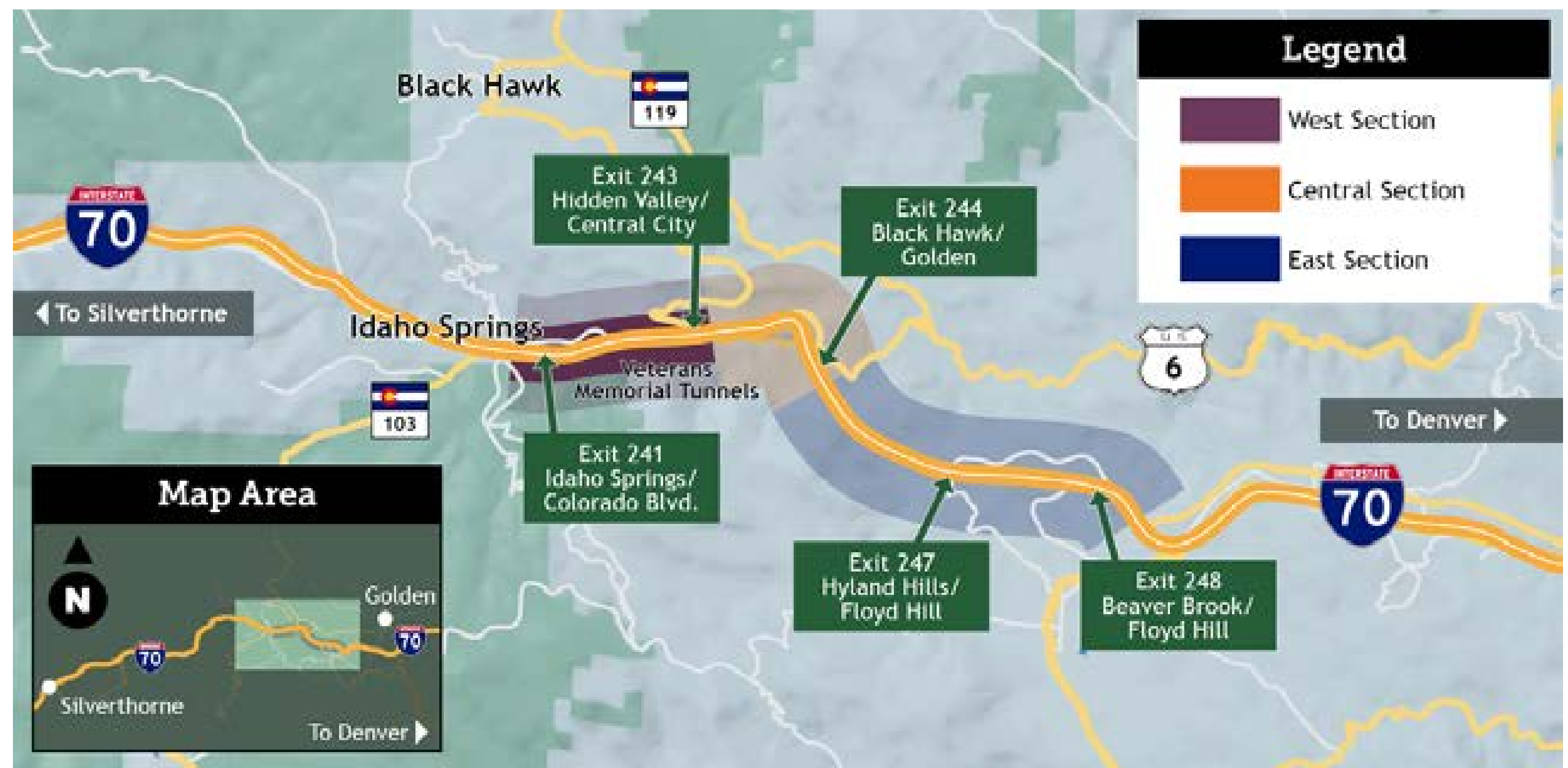
Floyd Hill Project

West Section

Overview:

- Construct the westbound I-70 Express Lane through the Veterans Memorial Tunnels to Idaho Springs/Colorado Blvd. (Exit 241).
- Straighten I-70 curves to improve safety and achieve a 55 MPH design speed.
- Rebuild the bridges over Clear Creek, just west of Hidden Valley.
- Resurface/reconstruct the Clear Creek Greenway trail from the Hidden Valley interchange to the Veterans Memorial Tunnels.
- Install a noise wall east of Idaho Springs at Idaho Springs/Colorado Blvd. (Exit 241).
- Avoids impacts to County Road 314, which will remain open during construction.

West Section (Hidden Valley to Idaho Springs) Construction Start: Fall 2023





Floyd Hill Project

Central Section

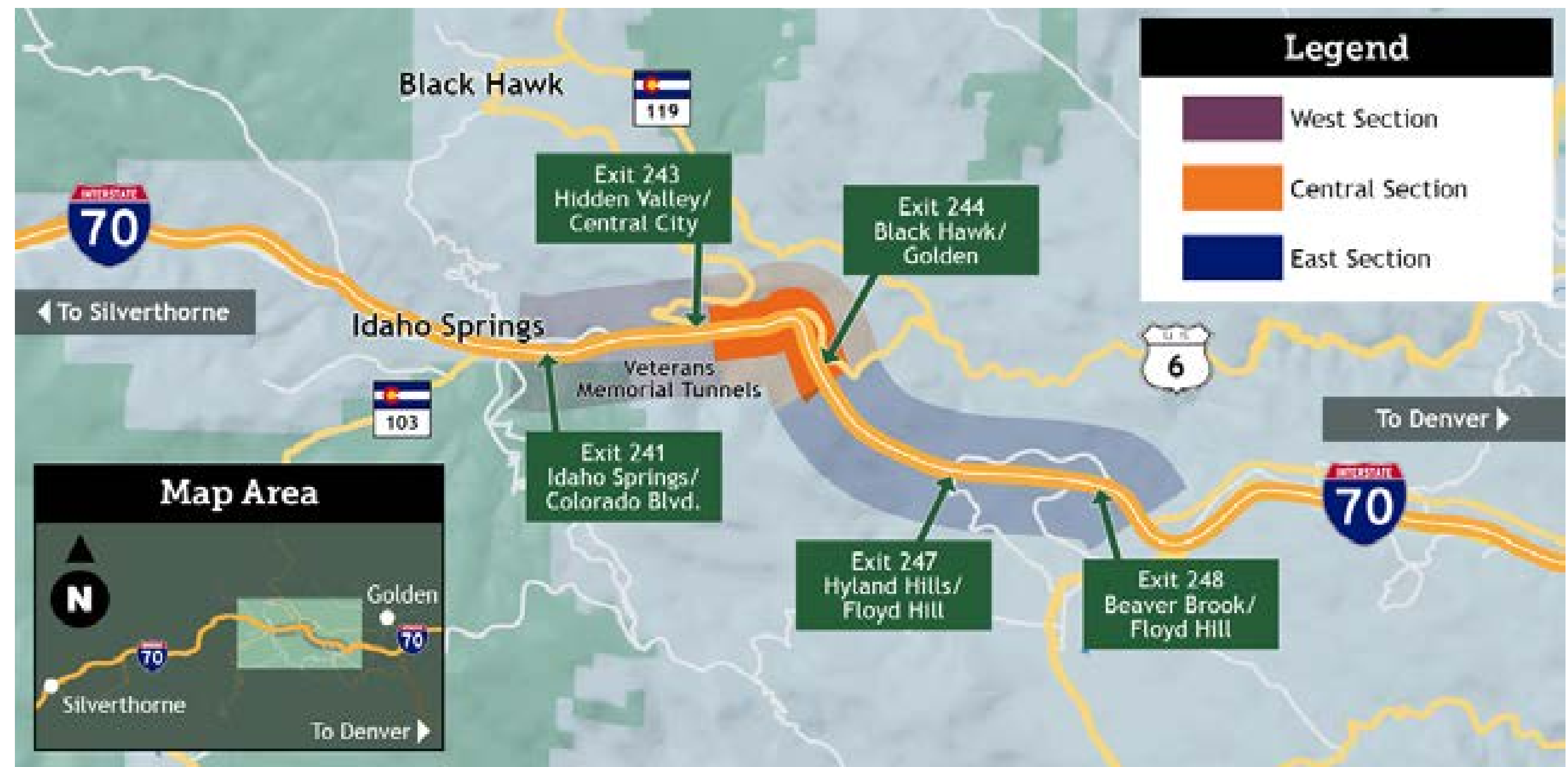
Overview:

- Complete construction of the westbound I-70 Express Lane.
- Elevate I-70 above Clear Creek Canyon.
- Straighten curves on I-70 to improve safety and achieve a 55 MPH design speed.
- Construct a new on-ramp to eastbound I-70 from the bottom of Floyd Hill/US 6, which will connect to the new eastbound I-70 extended on-ramp for heavy commercial or slow-moving vehicles.
- Reconstruct the Clear Creek Greenway trail from the bottom of Floyd Hill to County Road 314.

Central Section

(Floyd Hill to Hidden Valley)

Construction Start: Early 2024





Floyd Hill Project

Explore Better Travel Options

Make your trip along the I-70 mountain corridor easier:

- Carpool using TreadShare. Download the app and pair with a rider or driver to share the trip.
- Use regional transit. Take Bustang, Snowstang, Outrider or Pegasus along I-70 and use local transit options to get around.
- Change your peak travel time. Use the GoI70.com travel forecast to plan your trip and avoid traffic.



Follow @goi70_co on Instagram or GoI70.com on Facebook to learn more!



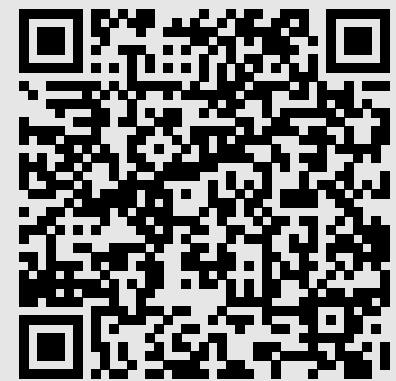
Floyd Hill Project

Stay Informed



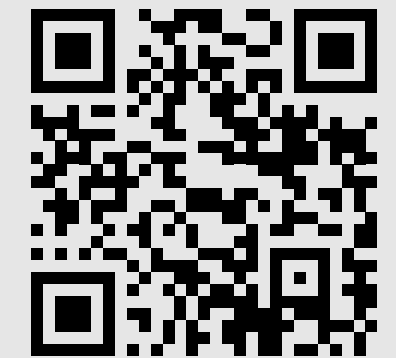
Sign up for text messaging service:

Text floydhill to 21000



Visit the project website:

codot.gov/projects/i70floydhill

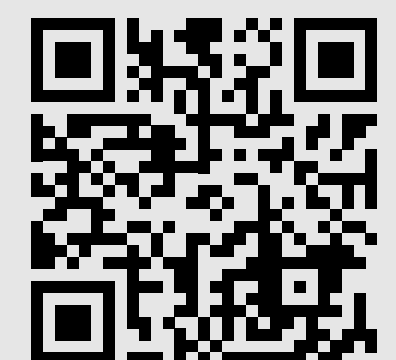


Leave a voicemail:


720-994-2368 (CDOT)



Check COtrip.org for real-time lane closures and traffic impacts.



For statewide transportation information:

 Follow @coloradodot on Instagram

 Visit facebook.com/coloradodot



Floyd Hill Project

Thank You!

Please visit the boards to meet with project staff and ask questions!

