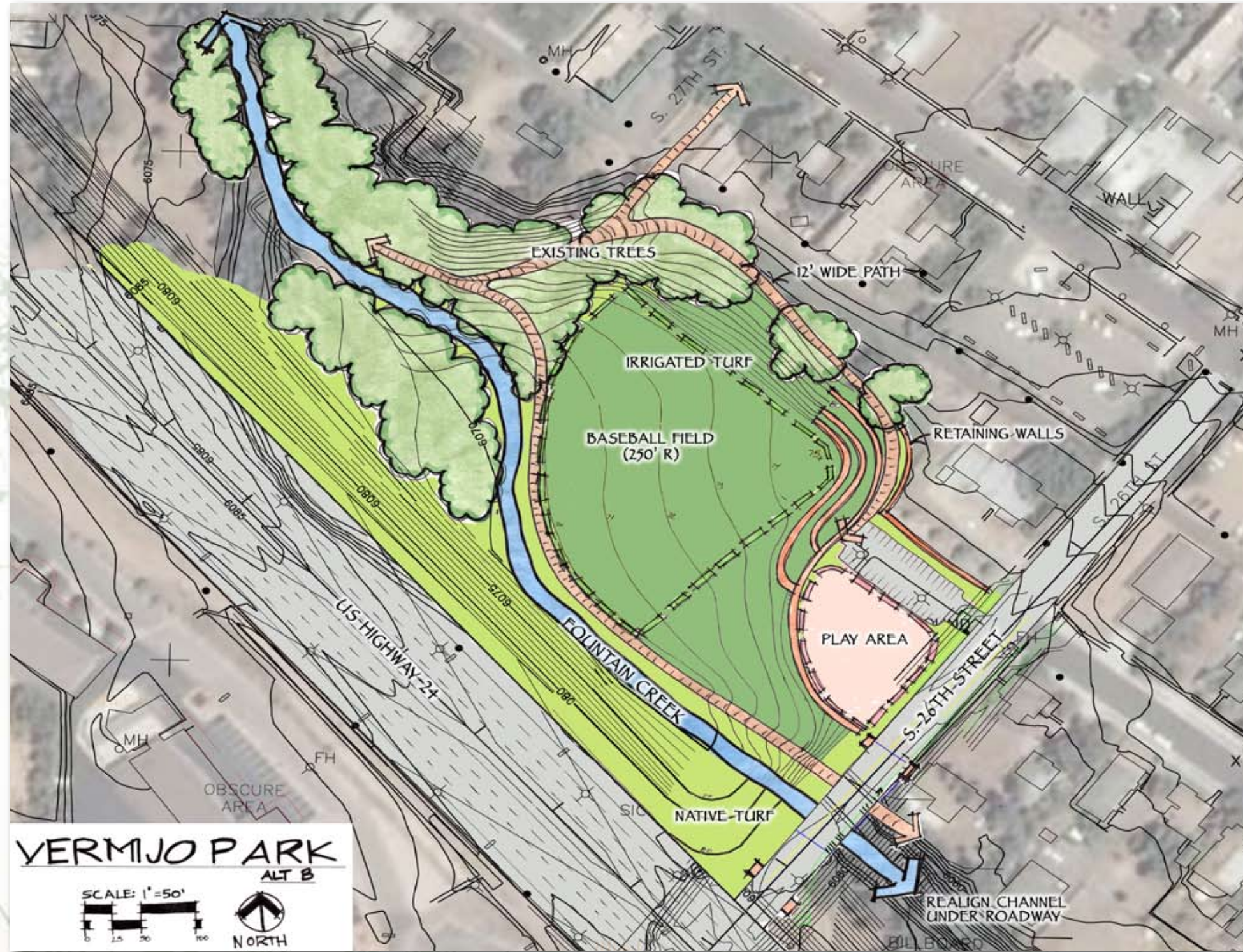


UNIQUE AREAS - CONCEPT FOR VERMIJO PARK



NOTE: Colorado Department of Transportation is willing to install types of plants appropriate to US 24 as long as another party maintains the plants. Said plant material will not be installed until a formalizing agreement on material and ownership has been established as part of the final landscape design.

THIS CONCEPT WAS DEVELOPED FOR THE EA

