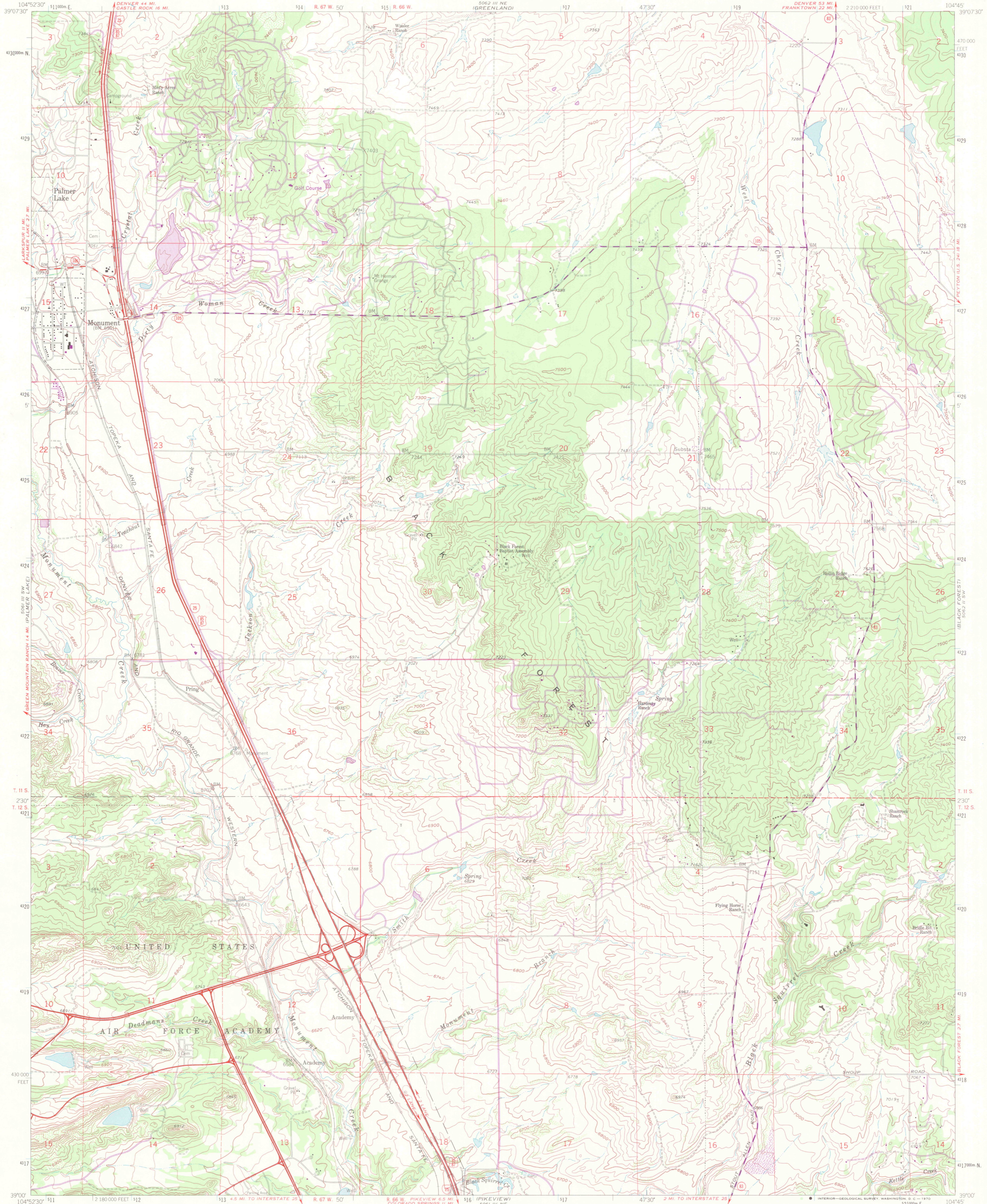


UNITED STATES
DEPARTMENT OF THE INTERIOR
GEOLOGICAL SURVEY

SUPERSEDED

MONUMENT QUADRANGLE
COLORADO-EL PASO CO
7.5 MINUTE SERIES (TOPOGRAPHIC)

5062 III SE-SERIES
CHERRY VALLEY SCHOOL

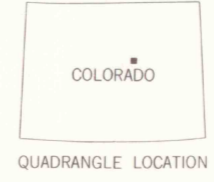
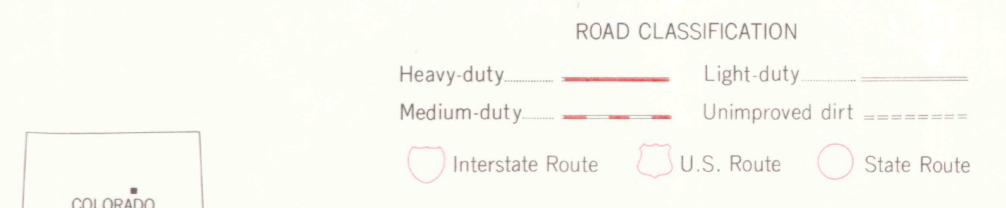
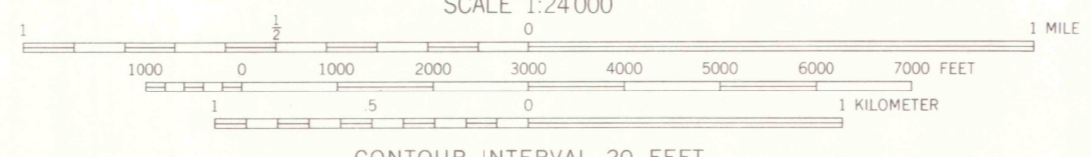
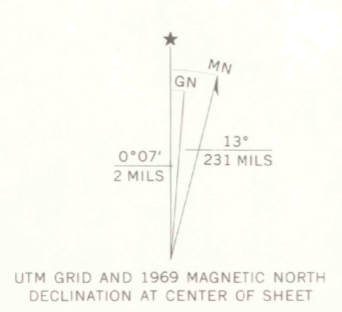


Mapped, edited, and published by the Geological Survey
in cooperation with U. S. Corps of Engineers

Control by USGS and USC&GS
Topography by photogrammetric methods from aerial photographs
taken 1952. Field checked 1954. Revised from aerial photographs
taken 1960. Field checked 1961

Polycyclic projection. 1927 North American datum
10,000-foot grid based on Colorado coordinate system, central zone
1000-meter Universal Transverse Mercator grid ticks,
zone 13, shown in blue

Fine red dashed lines indicate selected fence and field lines where
generally visible on aerial photographs. This information is unchecked
Revisions shown in purple compiled from aerial photographs
taken 1969. This information not field checked



LIBRARY USE ONLY

THIS MAP COMPLIES WITH NATIONAL MAP ACCURACY STANDARDS
FOR SALE BY U. S. GEOLOGICAL SURVEY, DENVER, COLORADO 80225 OR WASHINGTON, D. C. 20242
A FOLDER DESCRIBING TOPOGRAPHIC MAPS AND SYMBOLS IS AVAILABLE ON REQUEST

MONUMENT, COLO.
N3900-W10445/7.5

1961
PHOTOREVISED 1969
AMS 5062 III SE-SERIES V377

SUPERSEDED

OFFICE COPY