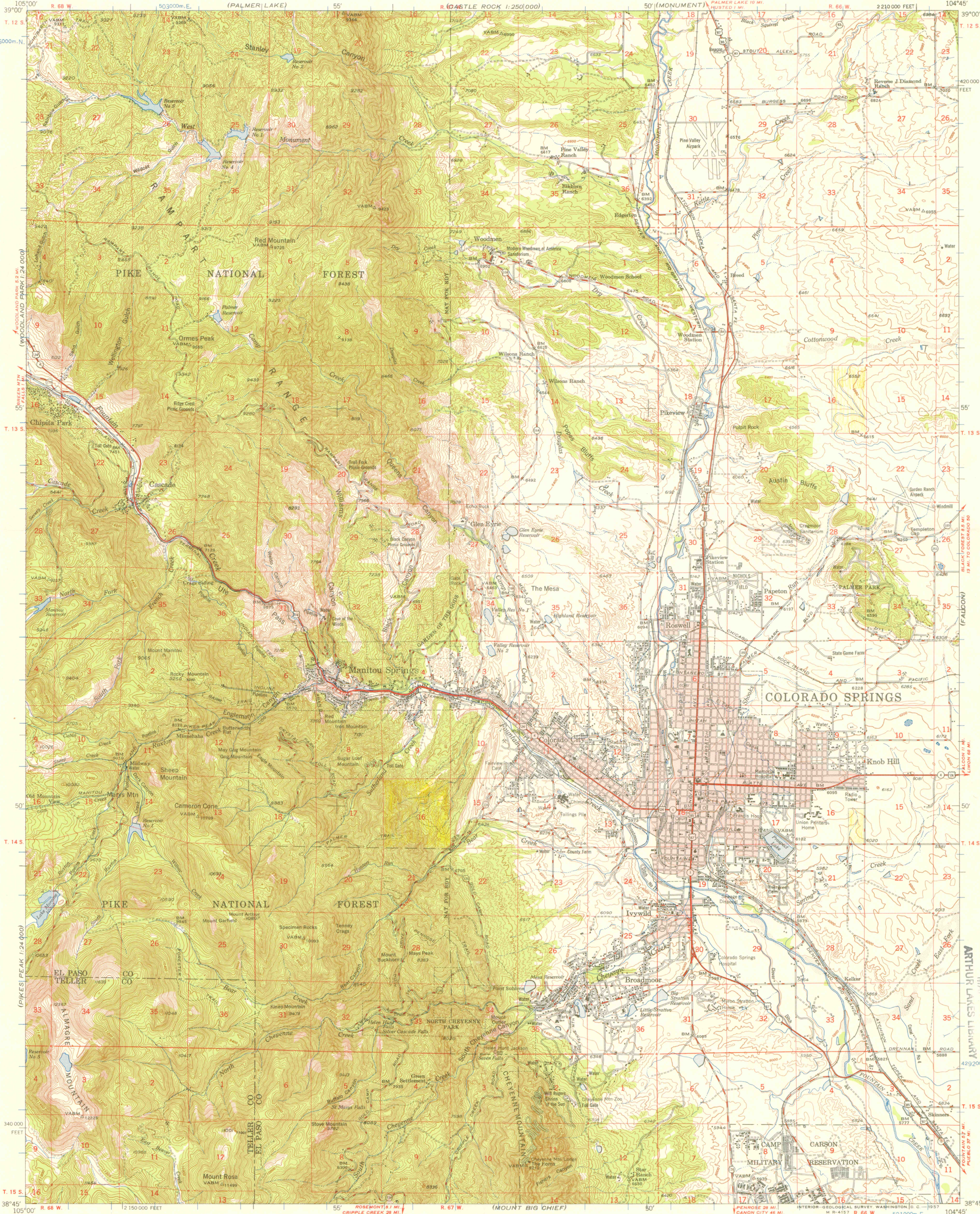
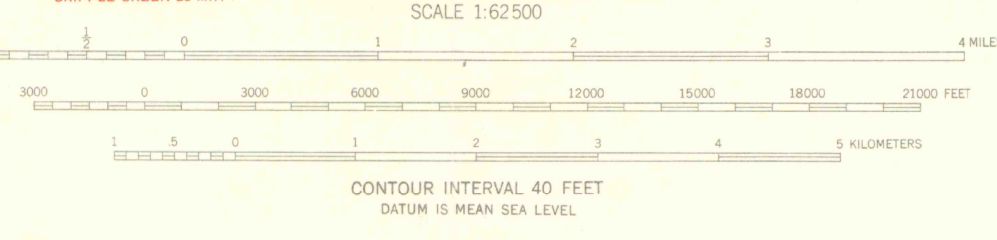
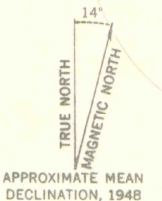


(MT. DECEPTION)

(ELBERT)



Mapped, edited, and published by the Geological Survey  
Control by USC&GS and GS  
Topography from aerial photographs by multiplex methods  
Aerial photographs taken 1947. Field check 1948  
Polyconic projection. 1927 North American datum  
10,000-foot grid based on Colorado coordinate system,  
central zone  
Red tint indicates area in which only  
landmark buildings are shown  
1000-meter Universal Transverse Mercator grid ticks,  
zone 13, shown in blue



ROAD CLASSIFICATION  
HARD-SURFACE ALL WEATHER ROADS DRY WEATHER ROADS  
Heavy-duty LANE LANE Improved dirt  
Medium-duty LANE LANE Unimproved dirt  
Loose-surface, graded, or narrow hard-surface  
U. S. Route State Route



COLORADO SPRINGS, COLO.  
N3845-W10445/15  
1948

OFFICE COPY  
LIBRARY USE ONLY

MAY 2 4 1994

G  
C222  
s62  
U5  
Colo. Spgs.  
1948

LEGEND - See Falcon  
15' Quad