

An aerial photograph of a multi-lane highway cutting through a dense, green forest. Two distinct tunnel entrances are visible on the right side of the road, each with a concrete structure above the road surface. The surrounding terrain is hilly and covered in thick vegetation. The text is overlaid on the upper left and center of the image.

Twin Tunnels Environmental Assessment

Public Scoping Meeting
September 27, 2011

Welcome



- Agenda
 - » 5:30-6:00 open house
 - » 6:00-6:30 presentation and Q&A
 - » 6:30-7:30 open house
- Objectives
 - » Provide information on the proposed improvements
 - » Solicit input from the public and other stakeholders
- Contacts
 - » CDOT Program Engineer – Jim Bemelen
 - » CDOT Project Manager – Ben Acimovic
 - » Consultant Project Manager – Mandy Whorton, CH2M HILL

How We Got Here



- I-70 Mountain Corridor PEIS and Agreements
 - » Record of Decision, June 2011
 - » Section 106 Programmatic Agreement, SWEEP MOU, ALIVE MOU
 - » Context Sensitive Solutions
- Idaho Springs Visioning
- Twin Tunnels – Tunnel Visioning

Tunnel Visioning Process



- CDOT, stakeholders and technical experts met to discuss the mobility issues at the Twin Tunnels
- Five day workshop followed CSS 6 Step Process
- Desired outcome of the workshop:
Develop improvements that address near term and current mobility needs

Tunnel Visioning Process



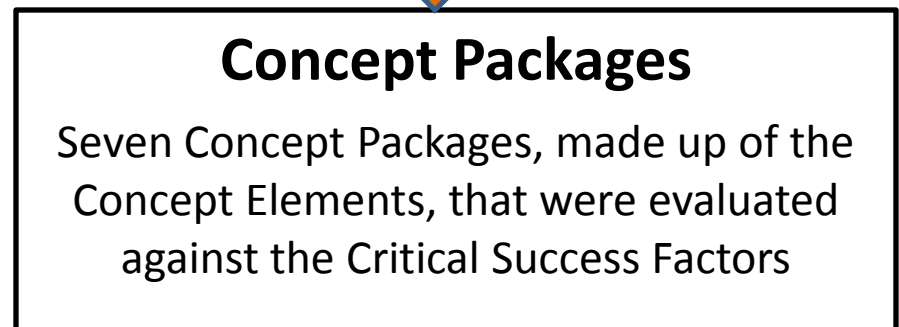
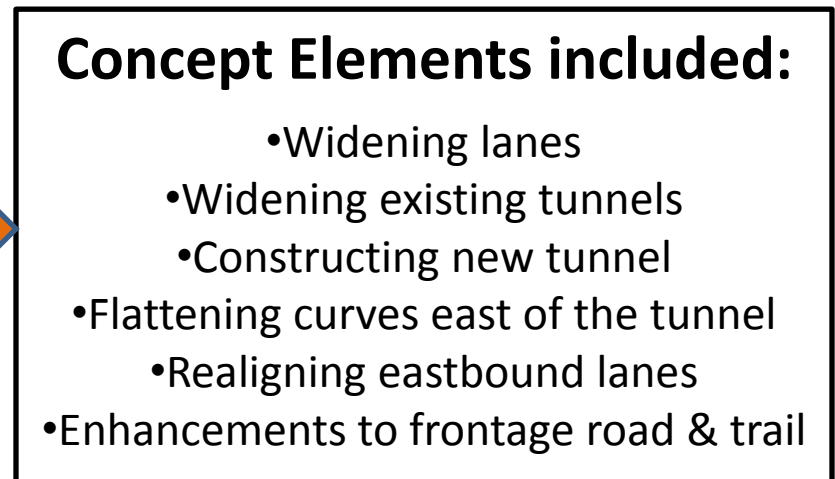
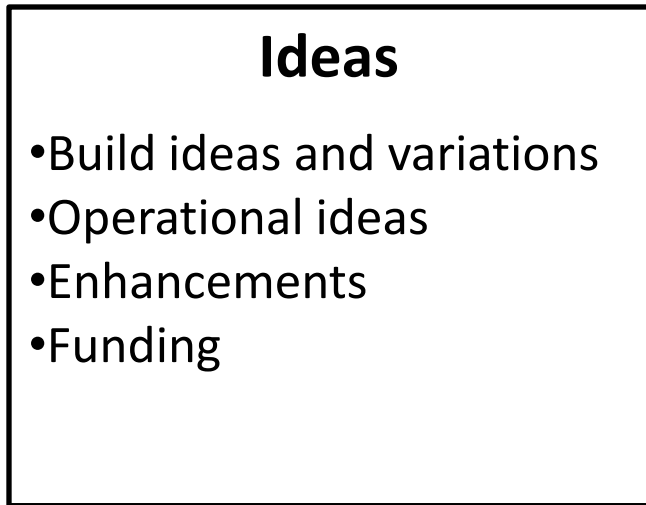
Participants

- CDOT
- Clear Creek County
- Idaho Springs
- Denver Regional Council of Governments
- Jefferson County
- FHWA
- Vail Resorts
- BRT advocate
- Colorado Motor Carriers
- Denver Post
- Transit researcher
- 30 engineering and construction experts

Critical Success Factors

- Mobility
- Compatibility
- Timing
- Cost
- Environmental
- Economic
- Flexibility and Usability
- Stakeholder Acceptance
- Funding and Political Support
- Safety
- Construction Disruption

Tunnel Visioning Process



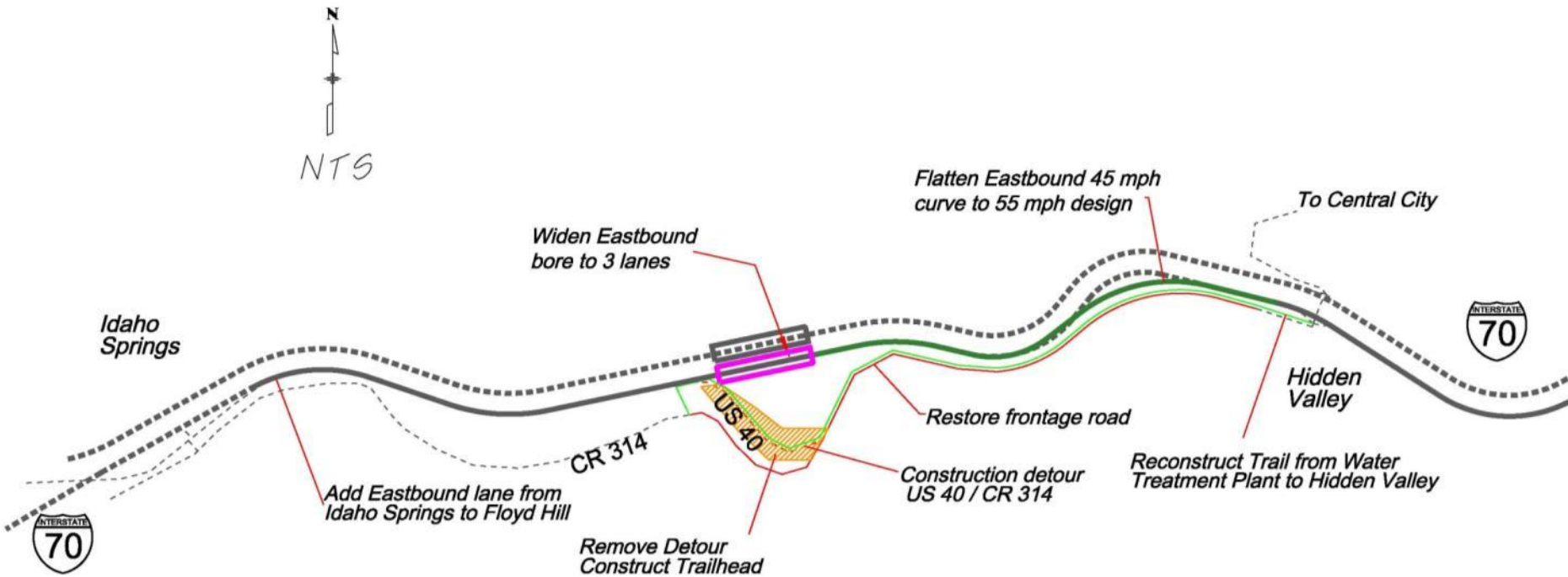
Evaluation of Tunnel Visioning Concepts



Concept Packages



Tunnel Visioning Recommendation

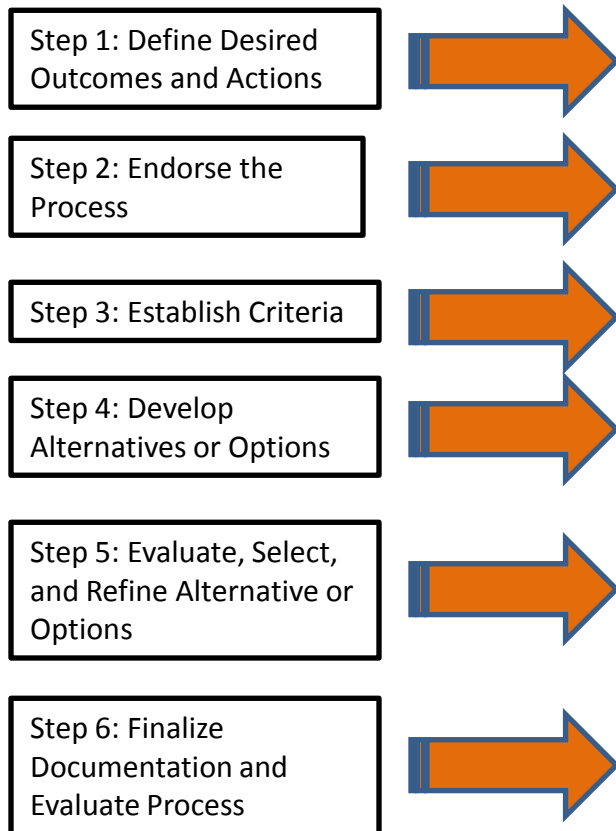


Following the CSS Guidance



Twin Tunnels Project

6 Step Process



Process Steps

- Context Statement
- Core Values
- Public Scoping
- Agency Scoping
- Tunnel Visioning analysis
- Tunnel Visioning recommendation
- Refinements to Tunnel Visioning Recommendation
- Environmental Analysis
- Environmental documentation

Collaboration

- Project Leadership Team (PLT)
- Technical Team (TT)
- Issues Teams
 - SWEEP
 - ALIVE
 - 106 PA/Historic
- Public and stakeholder outreach

Twin Tunnels Project Context Statement



I-70 is Colorado's only east-west Interstate, providing a link over the Continental Divide, interstate commerce and mountain access.

Blasted through a geological feature and contained within a narrow canyon, the Twin Tunnels symbolize Colorado's historic endeavors to improve access to and from the mountains. Currently occupying this canyon are Clear Creek, the Frontage Road, and I-70. The vision for the future includes an Advance Guideway System with these transportation facilities.

The Twin Tunnels are a gateway for arriving and departing the mountains, provide a natural crossing for wildlife and connect local communities to national and regional services. Running parallel to I-70 is Clear Creek, a natural and recreational resource. The tunnels now are a constriction to travel and create a safety problem.

Twin Tunnels Project Core Values



- Safety
- Mobility
- Gateway
- Wildlife
- Clear Creek
- Tourist destinations and community facilities
- History

Twin Tunnels Project Core Values



- **Safe** travel for people and goods. **Safety** for emergency responders and maintenance workers. A **safe** crossing for wildlife.



Twin Tunnels Project Core Values



- **Mobility** through safe and reliable transportation facilities.



Twin Tunnels Project Core Values



- A primary access and visual **gateway** to the Mountain Mineral Belt, historic Idaho Springs and Front Range communities.



Twin Tunnels Project Core Values



- **Wildlife**, wildlife habitat, migration routes and access to Clear Creek.



Twin Tunnels Project Core Values



- **Clear Creek**, as a clean, high-quality water resource, a recreational asset, an aquatic resource with sustainable fisheries' habitat, a drinking water source, and a defining natural feature of the corridor.



Twin Tunnels Project Core Values



- **Tourist destinations and community facilities**, including the Scott Lancaster Trail and Bridge, the waste-water treatment plant, the planned Clear Creek Greenway, the frontage road, and Clear Creek.



Twin Tunnels Project Core Values



- **History** as a defining element of Clear Creek County. Celebrating the cultural resources associated with mining and mining towns, and the first successful tunneling operation as part of the construction of I-70 west through Colorado's mountains.

Twin Tunnels EA

Draft Purpose and Need

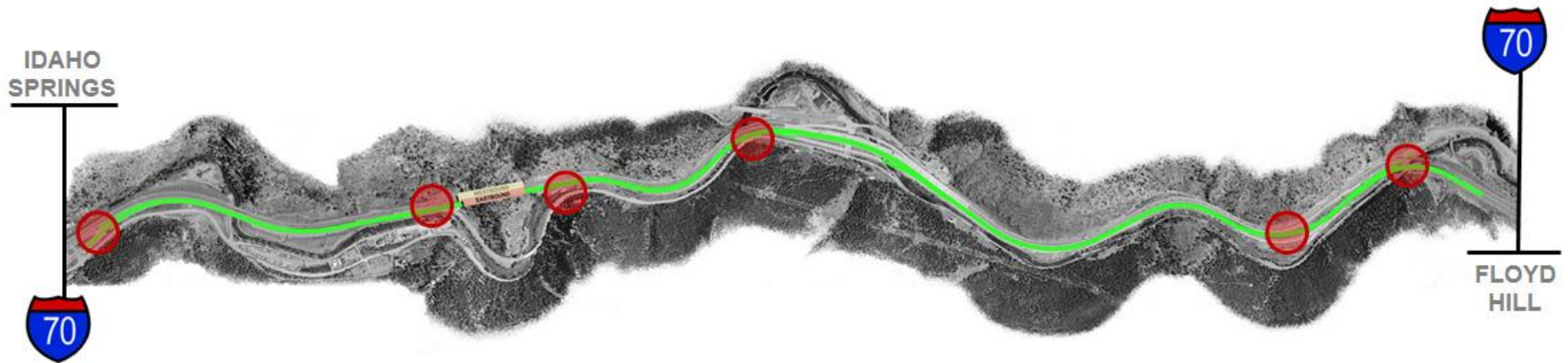


The purpose of the Twin Tunnels project is to improve eastbound highway safety, operations, and travel time reliability in the Twin Tunnels area of the I-70 Mountain Corridor east of Idaho Springs.

The project is needed to address:

- » Safety
- » Mobility
- » Operational characteristics that slow travel

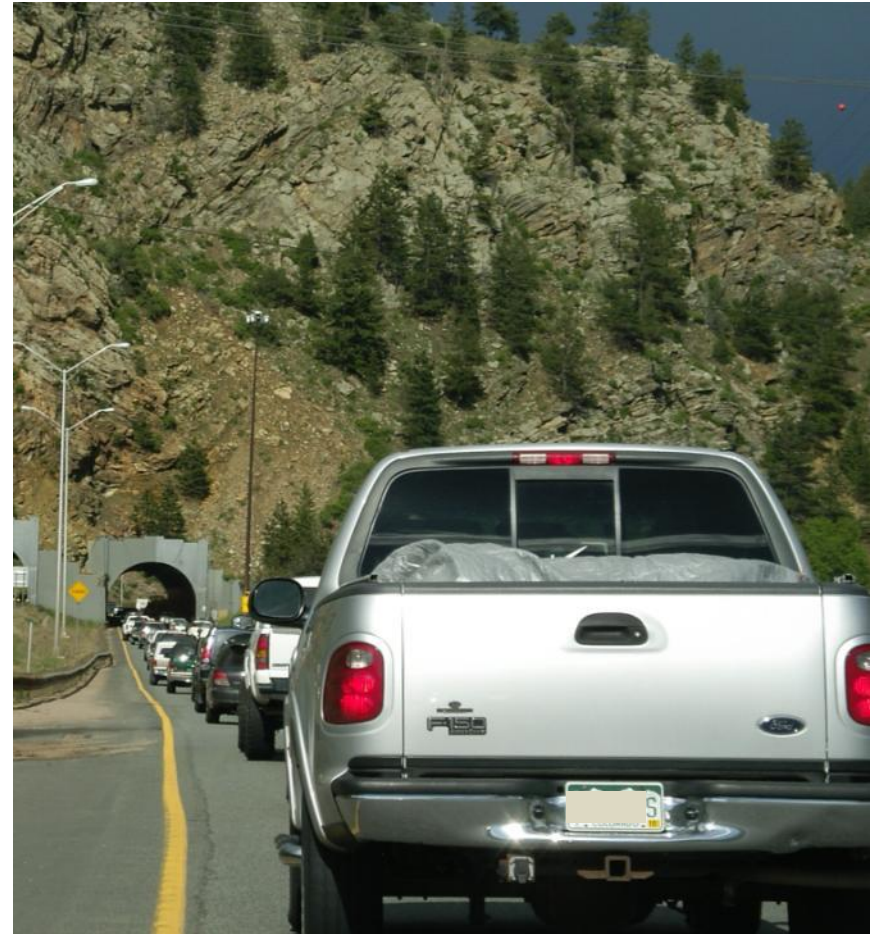
Twin Tunnels Proposed Action



Operational Considerations



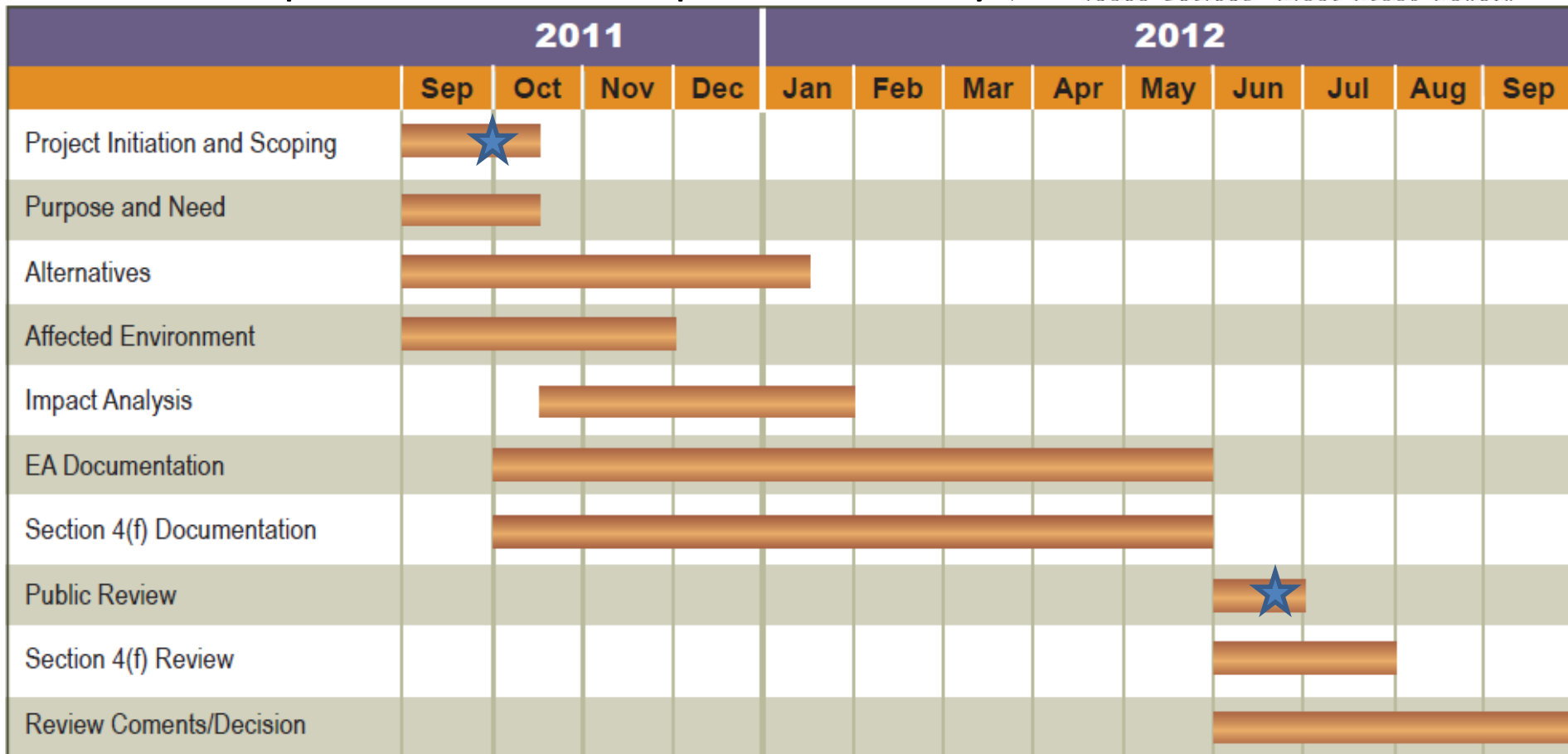
- Current considerations for this project include congestion pricing on new eastbound lane



Schedule



✓ NEPA process to be completed in one year



- ✓ Goal to implement project quickly
- ★ Public meetings

Project Teams



Project Leadership Team

- FHWA
- CDOT
- Clear Creek County Commissioner
- Idaho Springs Mayor
- Consulting Team

Technical Team

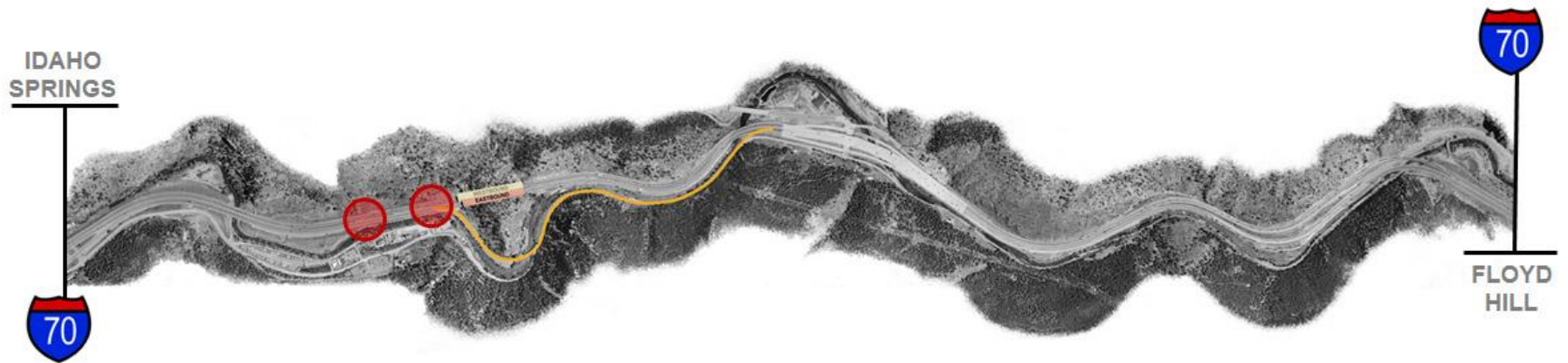
- Federal, State and local agencies
- Private stakeholders
- Interest groups and organizations
- Transportation/engineering
- Wildlife
- Historic
- Water resources
- Environmental
- Public safety and emergency response
- Forests
- User groups

Issues Task Forces



- **Historic Issues Task Force**
 - » Consulting Parties from the Section 106 Programmatic Agreement
 - » Address processes, documentation, mitigation and agreements around historic issues
- **SWEEP**
 - » Develop recommendations consistent with the SWEEP MOU
- **ALIVE**
 - Develop recommendations consistent with the ALIVE MOU

Construction Considerations



How to Stay Involved



- Provide comments tonight
- Provide contact information
- Follow the project at www.coloradodot.info/projects/i70twintunnels
- Participate in Public Hearing
- Contact Project Manager Ben Acimovic
Benjamin.Acimovic@dot.state.co.us