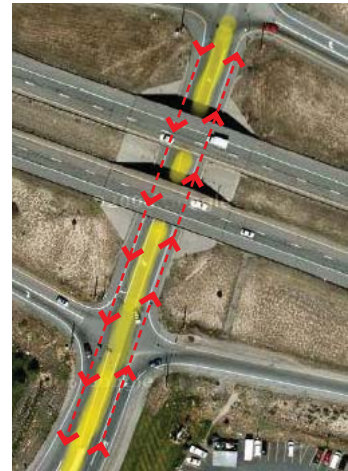


# Edwards Interchange Project Update

## August 16, 2010

### *Traffic Shift of Edwards Access Road and Berry Creek Road Closure Ahead...*

- **Berry Creek Road will close August 13 - September 2 from the intersection of Beard Creek Road to Latigo.** Beard Creek road will remain open with access to all businesses. Singletree Traffic will be detoured to Win-slow Underpass via Miller Ranch Road.
  - Later in the week, crews will shift traffic to the two outer-most lanes on Edwards Access Road creating a workzone in the middle. *See graphic to the right, yellow indicates the protected workzone.*
  - Crews will start construction on the Berry Creek waterline and will be working in the road to prepare for paving.
- PLEASE SLOW FOR THE CONE ZONE!**



#### BASIC PROJECT INFORMATION

**Project schedule:** March 15 - November 19, 2010.

**Scope:** Construction of four roundabouts: Two at the I-70 interchange, one at Miller Ranch Road & Edwards Access Road, and one at the intersection of Berry Creek/Beard Creek Roads. Work also includes bike/ pedestrian paths along much of the corridor.

**Traffic Impacts:** There will always be one lane of thru traffic on Miller Ranch Road and the Edwards Access Road going in each direction during peak hours, plus auxiliary turn lanes. Peak hours are 7-9 a.m. and 4-7 p.m. Monday through Friday.

**Funding:** This project is funded by the American Recovery & Reinvestment Act of 2009

**Public Information Hotline: 970-949-1102 Updates: [EdwardsInterchange@accbuilt.com](mailto:EdwardsInterchange@accbuilt.com)**

**[www.coloradodot.info/projects/i70edwardsinterchange](http://www.coloradodot.info/projects/i70edwardsinterchange)**

