



MONTHLY PROGRESS REPORT

July 2008





TABLE OF CONTENTS

	<u>PAGE</u>
Introduction	1
1.0 Volumes and Lane Usage	1
2.0 Bus Travel Times	5
3.0 Revenues and Expenditures	6
4.0 Incidents	8
5.0 Enforcement	9
6.0 Operational Issues	9

TABLES

July 2008 Traffic Data Summary	1
Peak Period Traffic Data (AM – Inbound)	3
Peak Period Traffic Data (PM – Outbound)	3
AM and PM Peak Hour Traffic	4
15 Minute Counts at 19 th Street	5
FY 09 CTE General Administrative Expenditures – July 2008	7
FY 09 I-25 HOV/Express Lanes Expenditures – July 2008	8
Colorado State Patrol Manual Citations	9

FIGURES

July 2008 Daily Traffic Volumes	1
Monthly Traffic Volumes	2
FY 08/09 Traffic Comparisons	2
AM and PM Peak Hour Traffic Averages	4
July 2008 Bus Travel Time Performance	6
FY 2009 Monthly Estimated Toll Revenue vs. Actual	6
FY 08/09 Revenue Comparisons	7

INTRODUCTION

This report contains information regarding traffic volumes and lane usage, bus travel times, revenues and expenditures, law enforcement activities, and incidents which may have impacted operations or revenues during the month of July 2008.

1.0 VOLUMES AND LANE USAGE

During July 2008, recorded use of the I-25 HOV/Express Lanes (including both HOV and toll-paying vehicles) increased by 7.68%, to 349,133; as compared to 324,245 in June, and 325,082 in May. Overall, usage is relatively stable.

The June summary of traffic data for both Tolled Express and HOV lanes follows. Data includes weekend and non-peak traffic.

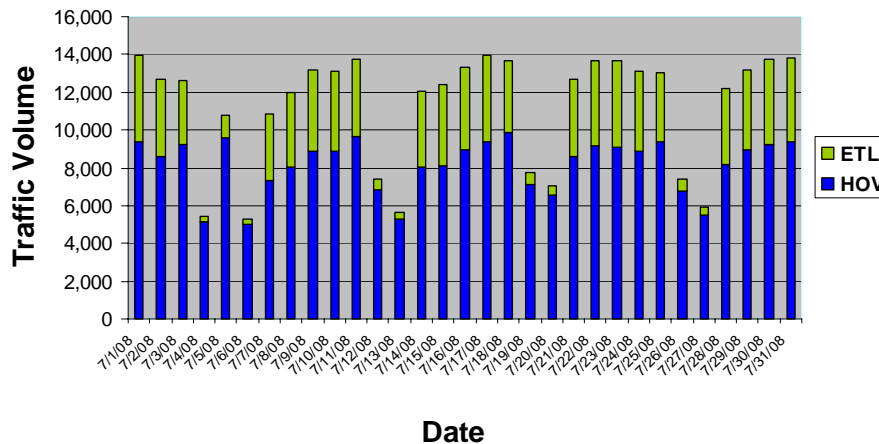
July 2008 Traffic Data Summary			
	Express	HOV	Total
Total Monthly Traffic	96,229	252,904	349,133
Maximum Daily Traffic	4,616	9,841	13,984
Average Weekday Traffic	3,985	8,710	12,694
Avg Weekday AM Peak Hour	468	691	1,159
Avg Weekday PM Peak Hour	381	874	1,256
Avg Weekday AM Peak Period*	1,872	2,763	4,635
Avg Weekday PM Peak Period**	1,526	3,497	5,023

* 6:00 AM – 10:00 AM

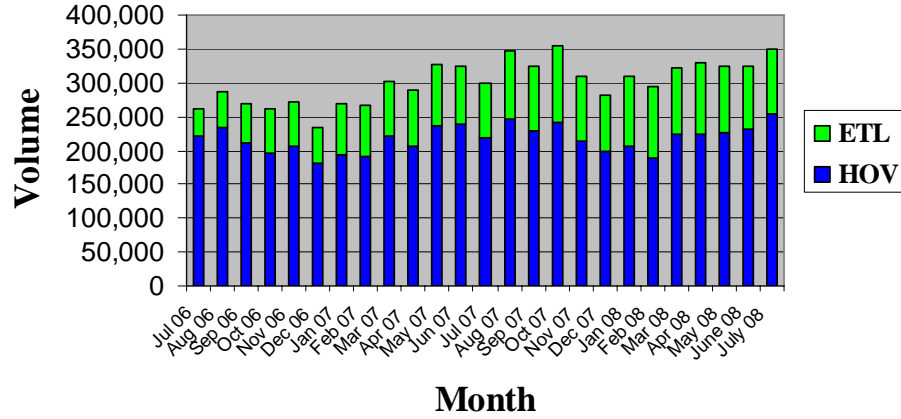
** 3:00 PM – 7:00 PM

Daily and monthly traffic volumes are illustrated in the following figures.

JULY 2008 DAILY TRAFFIC VOLUMES



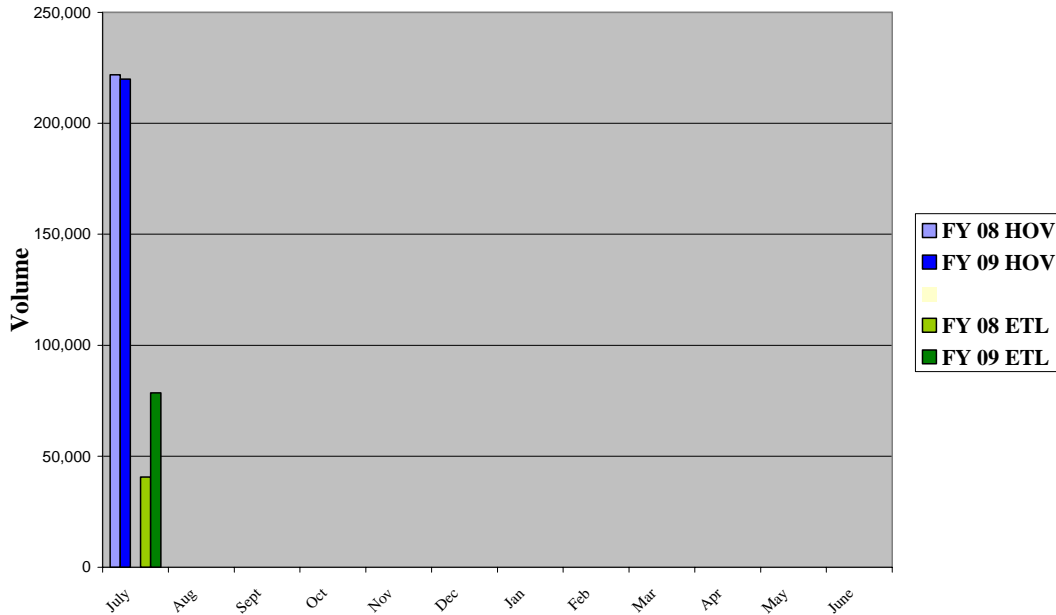
MONTHLY TRAFFIC VOLUMES



Recorded HOV lane usage during July 2008 declined from July 2007 levels by 2,043 but toll lane usage levels increased by 37,894 for the same corresponding months.

Current fiscal year traffic volumes compared to the previous fiscal year's volumes are represented in the following figure.

FY 08/09 Traffic Comparisons





MONTHLY PROGRESS REPORT – July 2008

Detailed data for peak period traffic volumes are found in the following tables.

		Morning Rush Period					
		Total Peak Period			Avg Per Hour		
	Weekday	Express	HOV	Total	Express	HOV	Total
1st	Tuesday	1,978	2,910	4,888	495	728	1,222
	Wednesday	1,847	2,832	4,679	462	708	1,170
	Thursday	1,345	2,423	3,768	336	606	942
	Friday	22	304	326	6	76	82
7th	Monday	1,759	2,546	4,305	440	637	1,076
	Tuesday	1,902	2,867	4,769	476	717	1,192
	Wednesday	2,059	2,981	5,040	515	745	1,260
	Thursday	2,097	3,029	5,126	524	757	1,282
14th	Friday	1,796	2,810	4,606	449	703	1,152
	Monday	2,007	2,917	4,924	502	729	1,231
	Tuesday	2,209	3,010	5,219	552	753	1,305
	Wednesday	2,080	3,120	5,200	520	780	1,300
21st	Thursday	2,191	3,006	5,197	548	752	1,299
	Friday	1,752	2,821	4,573	438	705	1,143
	Monday	1,957	2,805	4,762	489	701	1,191
	Tuesday	2,154	2,969	5,123	539	742	1,281
28th	Wednesday	2,060	2,912	4,972	515	728	1,243
	Thursday	2,047	2,906	4,953	512	727	1,238
	Friday	1,653	2,827	4,480	413	707	1,120
	Monday	1,993	2,784	4,777	498	696	1,194
	Tuesday	2,064	2,884	4,948	516	721	1,237
	Wednesday	1,981	2,956	4,937	495	739	1,234
	Thursday	2,094	2,939	5,033	524	735	1,258

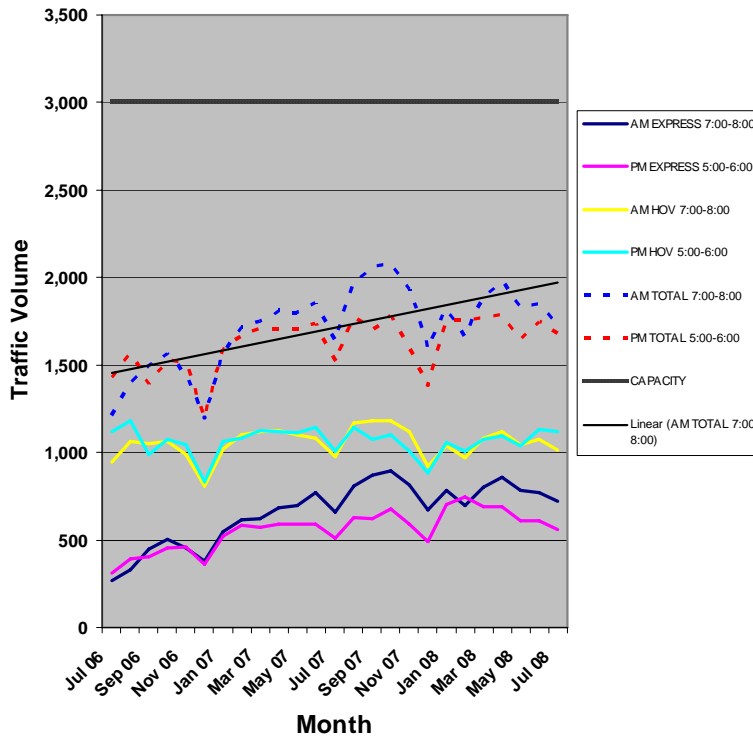
		Afternoon Rush Period					
		Total Peak Period			Avg Per Hour		
	Weekday	Express	HOV	Total	Express	HOV	Total
1st	Tuesday	1,940	3,908	5,848	485	977	1,462
	Wednesday	1,625	3,588	5,213	406	897	1,303
	Thursday	1,286	3,468	4,754	322	867	1,189
	Friday	74	1,468	1,542	19	367	386
7th	Monday	1,303	3,119	4,422	326	780	1,106
	Tuesday	1,526	3,370	4,896	382	843	1,224
	Wednesday	1,679	3,599	5,278	420	900	1,320
	Thursday	1,586	3,607	5,193	397	902	1,298
14th	Friday	1,591	3,813	5,404	398	953	1,351
	Monday	1,469	3,412	4,881	367	853	1,220
	Tuesday	1,629	3,601	5,230	407	900	1,308
	Wednesday	1,685	3,618	5,303	421	905	1,326
21st	Thursday	1,718	3,757	5,475	430	939	1,369
	Friday	1,484	3,833	5,317	371	958	1,329
	Monday	1,636	3,438	5,074	409	860	1,269
	Tuesday	1,671	3,562	5,233	418	891	1,308
28th	Wednesday	1,750	3,827	5,577	438	957	1,394
	Thursday	1,578	3,615	5,193	395	904	1,298
	Friday	1,378	3,681	5,059	345	920	1,265
	Monday	1,488	3,382	4,870	372	846	1,218
	Tuesday	1,541	3,469	5,010	385	867	1,253
	Wednesday	1,783	3,675	5,458	446	919	1,365
	Thursday	1,675	3,632	5,307	419	908	1,327



The following table and graph represent monthly averages of peak hour traffic.

	AM EXPRESS 7:00-8:00	AM HOV 7:00-8:00	PM HOV 5:00-6:00	PM EXPRESS 5:00-6:00	AM TOTAL 7:00-8:00	PM TOTAL 5:00-6:00	CAPACITY
Jul 06	268	947	1,120	312	1,215	1,432	3,000
Aug 06	331	1,065	1,179	389	1,396	1,568	3,000
Sep 06	446	1,051	990	403	1,497	1,393	3,000
Oct 06	502	1,064	1,075	453	1,566	1,528	3,000
Nov 06	456	986	1,045	457	1,442	1,502	3,000
Dec 06	378	808	831	360	1,186	1,191	3,000
Jan 07	546	1,021	1,060	523	1,567	1,583	3,000
Feb 07	618	1,099	1,081	585	1,717	1,666	3,000
Mar 07	623	1,121	1,128	575	1,744	1,703	3,000
Apr 07	684	1,123	1,117	589	1,807	1,706	3,000
May 07	697	1,098	1,112	592	1,795	1,704	3,000
Jun 07	772	1,081	1,144	591	1,853	1,735	3,000
Jul 07	659	976	1,009	509	1,635	1,518	3,000
Aug 07	810	1,169	1,144	627	1,979	1,771	3,000
Sep 07	873	1,184	1,075	623	2,057	1,698	3,000
Oct 07	895	1,180	1,101	676	2,075	1,777	3,000
Nov 07	814	1,121	1,008	591	1,935	1,599	3,000
Dec 07	670	921	882	492	1,591	1,374	3,000
Jan 08	784	1,037	1,056	700	1,821	1,756	3,000
Feb 08	694	967	1,008	747	1,661	1,755	3,000
Mar 08	804	688	1,083	1,078	1,492	2,161	3,000
Apr 08	858	1,119	1,095	689	1,977	1,784	3,000
May 08	786	1,044	2,038	609	1,830	1,647	3,000
Jun 08	770	1,078	1,133	611	1,848	1,744	3,000
Jul 08	721	1,012	1,116	561	1,732	1,677	3,000

AM and PM Peak Hour Traffic Averages





Beginning in May, 15 minute counts at the 19th Street exit have been collected manually during the first full week of each month. A steady decline in traffic volume at this location has been observed, which is likely due to summer vacations. It is anticipated that volumes will increase significantly once the school year resumes and it will then be possible to observe the impact of hybrid cars in this area and anticipate bus delays.

A table containing 15-minute counts at 19th Street follows:

15-Minute Counts at 19th St.						
	Monday	Tuesday	Wednesday	Thursday	Friday	Average
	7-Jul	8-Jul	9-Jul	10-Jul	11-Jul	
7:00 - 7:15	173	175	186	174	182	178
7:15 - 7:30	206	246	244	200	190	217
7:30 - 7:45	223	253	280	264	217	247
7:45 - 8:00	218	240	262	227	251	240
8:00 - 8:15	190	202	207	226	203	206
8:15 - 8:30	162	175	188	190	157	174

2.0 BUS TRAVEL TIMES

The IGA between CDOT and RTD prescribes triggers to determine if there is any degradation to travel times for buses and carpools. These triggers are:

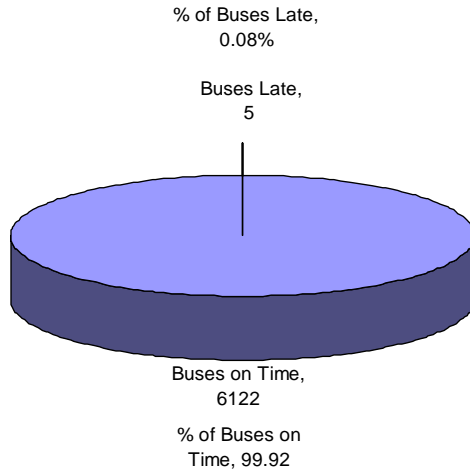
- Exceeding travel time for more than one bus in an hour (provided the excess is not attributable to a stall, crash and closure of the lane, or special event).
- Exceeding the travel time for more than one day per week for three weeks in a row.
- Predictable patterns.

During the month of July, five inbound buses exceeded the 8 minute and 45 second time stamp. One occurred on July 7th at 7:42; two on July 14th at 6:48 and two on July 15th at 6:42. No specific reason for the delays can be determined, since traffic volumes were normal and there were no corresponding delays for cars during the same time period. There were fifteen buses in the 7 minute 45 second to 8 minute 45 second time period during the month, with three of these outside of the normal rush hour.

During the evening rush hour, one bus exceeded the 8 minute 45 second travel time by 3 seconds and twenty-one buses ran between 7 minutes 45 seconds and 8 minutes and 45 seconds. Seven of the later group occurred outside of the normal rush hour.

Time stamps for all of the delays were very erratic, occurring on different days and times. Only on the 14th and 15th were there two buses that had the same time stamp.

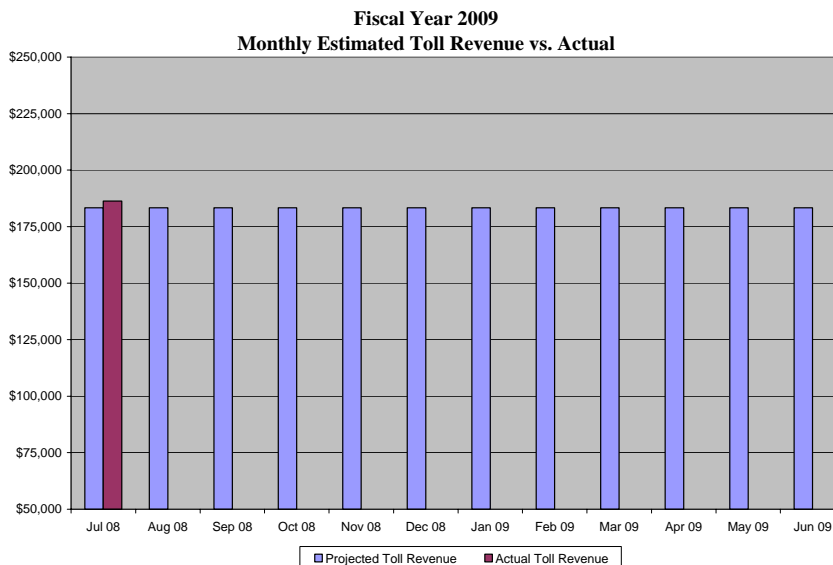
WEEKDAY BUS TRAVEL TIME
JULY 2008



3.0 REVENUES AND EXPENDITURES

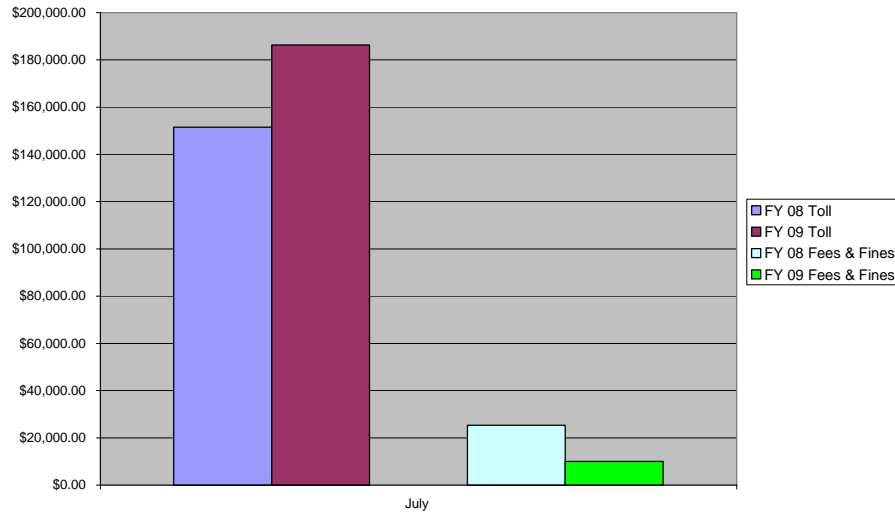
July 2008 toll revenues rose minimally to \$186,331.50, from June’s total of \$186,178.00. The total of all revenues, including tolls, fees, and fines, was \$196,336.33. Fees and fines collected this month were lower than in June and totaled \$10,004.83, which represents 5.10 % of total revenues.

The following figure shows the projected vs. actual toll revenue to date for Fiscal Year 2009.



Current fiscal year revenues compared to the previous fiscal year’s revenues are illustrated in the following figure.

FY 08/09 Revenue Comparison



The following table illustrates CTE general administrative expenditures through July 2008.

ITEM	Estimated Revenues	Estimated Expenditures	Current Month Actual	Year-to-Date Actual	Remaining
CTE Administrative Budget					
<u>Revenues</u>					
Interest Earnings from FY 07	\$ 216,000		\$ 5,334	\$ 5,334	\$ 210,666
Total Revenues	\$ 216,000		\$ 5,334	\$ 5,334	\$ 210,666
<u>Expenditures</u>					
General Engineering Consultant (8200)		\$ 50,000	\$ -	\$ -	\$ 50,000
Traffic and Revenue Consultant ((8200)		\$ 50,000	\$ -	\$ -	\$ 50,000
Financial Advisor (8200)		\$ 50,000	\$ -	\$ -	\$ 50,000
Misc. (Marketing/Research, Advertisement) (8200)		\$ 10,000	\$ -	\$ -	\$ 10,000
IBTTA Dues & Conference Registration (8100)		\$ 3,000	\$ -	\$ -	\$ 3,000
Misc. (Travel, Meals, Board Expenses) (8100)		\$ 3,000	\$ 10	\$ 10	\$ 2,990
CDOT/ CTE Staff Costs (8100)		\$ 50,000	\$ 6,848	\$ 6,848	\$ 43,152
Total Expenditures		\$ 216,000	\$ 6,858	\$ 6,858	\$ 209,142



MONTHLY PROGRESS REPORT – July 2008

The next table illustrates expenses specific only to the I-25/HOV Express Lanes.

ITEM	Estimated Revenues	Estimated Expenditures	Current Month Actual	Year-to-Date Actual	Remaining
I 25 Express Lanes (8500)					
<u>Revenues</u>					
Estimated Toll Revenues	\$ 2,200,000		\$ 186,232	\$ 186,232	\$ 2,013,768
Estimated Misc. Revenues	\$ 360,000		\$ 18,427	\$ 18,427	\$ 341,573
Loan from Transportation Commission	\$ -		\$ -	\$ -	\$ -
Carryforward Balance from FY 08				\$ -	
Total Revenues	\$ 2,560,000		\$ 204,659	\$ 204,659	\$ 2,355,341
<u>Expenditures</u>					
Contracted Snow Plow Operations (T-P Enterprises)		\$ 455,575	\$ 21,624	\$ 21,624	\$ 433,951
Colorado State Patrol		\$ 77,250	\$ -	\$ -	\$ 77,250
E-470 Back office Operations		\$ 100,000	\$ -	\$ -	\$ 100,000
E-470 Oversight and Management (Transactions)		\$ 300,000	\$ -	\$ -	\$ 300,000
E-470 Maintenance Tech.		\$ 83,166	\$ -	\$ -	\$ 83,166
Toll System Maintenance		\$ 30,000	\$ -	\$ -	\$ 30,000
VMS, Fiber, Travel Time, Surveillance		\$ 50,000	\$ -	\$ -	\$ 50,000
Non-revenue transponders		\$ 5,000	\$ -	\$ -	\$ 5,000
Marketing/ Outreach		\$ 10,300	\$ -	\$ -	\$ 10,300
User Survey		\$ -	\$ -	\$ -	\$ -
IBTTA Dues (25% of Total)		\$ 1,000	\$ -	\$ -	\$ 1,000
CDOT/ CTE Staff Costs		\$ 164,800	\$ 5,098	\$ 5,098	\$ 159,702
Contingency		\$ 250,000	\$ -	\$ -	\$ 250,000
TC Loan Repayment		\$ 310,475	\$ -	\$ -	\$ 310,475
Sinking Fund for Rehab or Reconstruction		\$ -	\$ -	\$ -	\$ -
Controller Cabinet Modifications		\$ 10,000	\$ -	\$ -	\$ 10,000
Gates		\$ 233,830	\$ -	\$ -	\$ 233,830
Software Upgrade for Gates		\$ 12,500	\$ -	\$ -	\$ 12,500
Variable Message sign Upgrades		\$ 20,000	\$ -	\$ -	\$ 20,000
Maintenance Response Vehicles		\$ 1,700	\$ -	\$ -	\$ 1,700
Dynamic Pricing Upgrade		\$ -	\$ -	\$ -	\$ -
Region 6 Maintenance Costs		\$ 338,404	\$ -	\$ -	\$ 338,404
Courtesy Patrol		\$ 106,000	\$ -	\$ -	\$ 106,000
Total Expenditures		\$ 2,560,000	\$ 26,722	\$ 26,722	\$ 2,533,278

4.0 INCIDENTS

No unusual incidents occurred during the month of July.



5.0 ENFORCEMENT

Law enforcement activities during FY 09 are shown in the table below.

COLORADO STATE PATROL MANUAL CITATIONS							
	Total Stopped	Toll Citations	HOV Citations	Hazardous Citations	Seatbelt Citations	All Other Citations	Arrests
July 08	99	16	16	19	9	23	0 felony, 0 misd.

6.0 OPERATIONAL ISSUES

No unusual operational issues occurred during the month of July.