



MONTHLY PROGRESS REPORT

February 2008





TABLE OF CONTENTS

	<u>PAGE</u>
Introduction	1
1.0 Volumes and Lane Usage	1
2.0 Bus Travel Times	3
3.0 Revenues and Expenditures	4
4.0 Incidents	6
5.0 Enforcement	6
6.0 Operational Issues	7

TABLES

February 2008 Traffic Data Summary	1
Peak Period Traffic Data (AM – Inbound)	2
Peak Period Traffic Data (PM – Outbound)	2
I-25 Sinkhole Northbound Between 38 th and 58 th Ave	3
FY 08 CTE General Administrative Expenditures – February 2008	5
FY 08 I-25 HOV/Express Lanes Expenditures – February 2008	6
Colorado State Patrol Manual Citations	6

FIGURES

February 2008 Daily Traffic Volumes	1
Monthly Traffic Volumes	1
FY 07 - FY 08 Traffic Comparisons	2
February 2008 Bus Travel Time Performance	4
FY 2008 Monthly Estimated Toll Revenue vs. Actual	4
FY 07/08 Revenue Comparison	5

INTRODUCTION

This report contains information regarding traffic volumes and lane usage, bus travel times, revenues and expenditures, law enforcement activities, and incidents which may have impacted operations or revenues during the month of February 2008.

1.0 VOLUMES AND LANE USAGE

During February 2008, recorded use of the I-25 HOV/Express Lanes (including both HOV and toll-paying vehicles) fell to 299,132; as compared to 309,646 in January and 282,158 in December. In spite of a shorter month and no counts collected from 3:00 pm on February 7 through February 10 during the I-25 sinkhole repair project, this does not represent a significant drop.

The February summary of traffic data for both Tolled Express and HOV lanes follows. Data includes weekend and non-peak traffic.

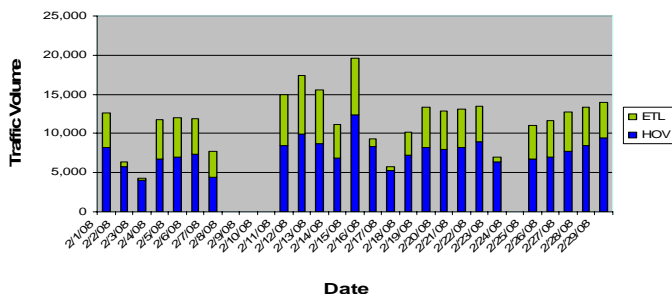
February 2008 Traffic Data Summary			
	Express	HOV	Total
Total Monthly Traffic	104,061	195,071	299,132
Maximum Daily Traffic	7,570	12,431	19,593
Average Weekday Traffic	4,792	7,618	12,410
Avg Weekday AM Peak Hour	451	585	1,035
Avg Weekday PM Peak Hour	512	743	1,255
Avg Weekday AM Peak Period	1,987	2,523	4,510
Avg Weekday PM Peak Period	2,043	3,067	5,110

* 6:00 AM – 10:00 AM

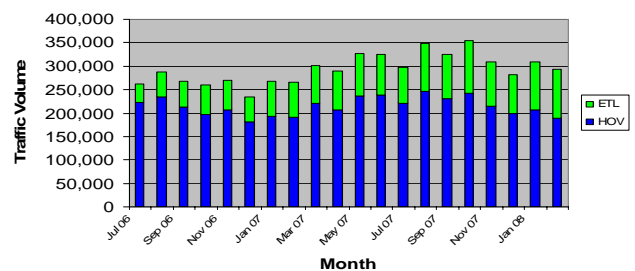
** 3:00 PM – 7:00 PM

Daily and monthly traffic volumes are illustrated in the following figures.

February 2008 Daily Traffic Volumes



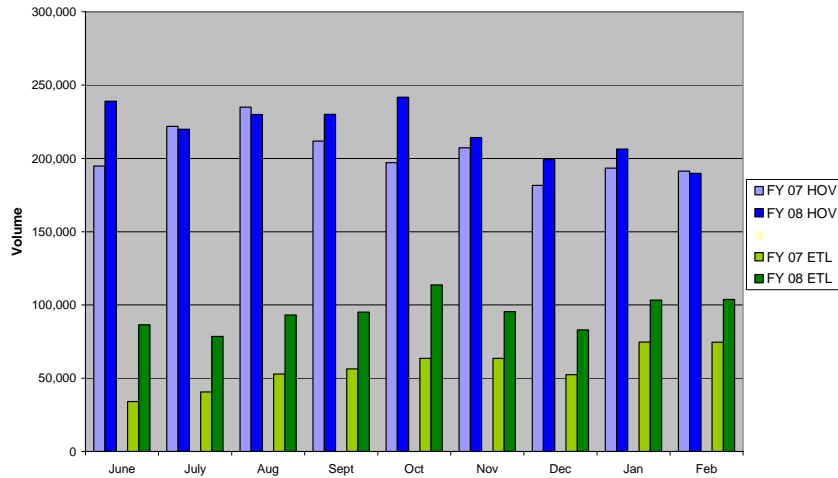
Monthly Traffic Volumes



Recorded HOV lane usage during February was below FY 07 levels by only approximately 1,500, again attributed to the missing counts. Toll lane usage remained relatively consistent.

Current fiscal year traffic volumes compared to the previous fiscal year’s volumes are represented in the following figure.

FY 07 - FY 08 Traffic Comparisons



Detailed data for peak period traffic volumes are found in the following tables.

	Morning Rush Period					
	Total Peak Period			Avg Per Hour		
	Express	HOV	Total	Express	HOV	Total
1st						
4th						
11th						
18th						
25th						

	Afternoon Rush Period					
	Total Peak Period			Avg Per Hour		
	Express	HOV	Total	Express	HOV	Total
1st						
4th						
11th						
18th						
25th						

The following table compares peak hour traffic volumes before, during, and after the sinkhole incident.



MONTHLY PROGRESS REPORT – February 2008

I-25 Sinkhole Northbound Between 38 th and 58 th Ave													
		Before Sinkhole		During Sinkhole		After Sinkhole (VPH)							
		(VPH)				Mon Feb 11, 2008		Tue Feb 12, 2008		Wed Feb 13, 2008		Thur Feb 14, 2008	
		Tue Feb 5, 2008		Thur Fri Feb 7-8, 2008		4-5PM	5-6PM	4-5PM	5-6PM	4-5PM	5-6PM	4-5PM	5-6PM
I-25 NB Volumes between 20 th and 58 th	20 th	6321	5712	Closed Due to Water Main Break No Data		3494	3912	4436	4031	4437	4215	4965	4387
	58 th	8232	7584			3895	4453	4764	4739	4598	4752	5218	5089
I-25 NB HOV Volume between 20 th and 58 th		1403	1738	No Tolls or data Collected during Incident since tolls were turned off to avoid billing mistakes for use of HOV lanes during incident		2121	2180	2096	2403	1683	1587	2037	1943
I-25 Average Speed between 20 th and 58 th	20 th	42 MPH	41 MPH	Closed Due to Start of Repair No Data		10 MPH	21 MPH	31 MPH	14 MPH	13 MPH	13 MPH	20 MPH	35 MPH
	58 th	51 MPH	51 MPH			11 MPH	12 MPH	15 MPH	15 MPH	20 MPH	21 MPH	25 MPH	23 MPH

Notes: Ramp Meter is located at 20th and 58th
 These are Snap Shots of Speeds and Volumes at two points in PM Peak Hours

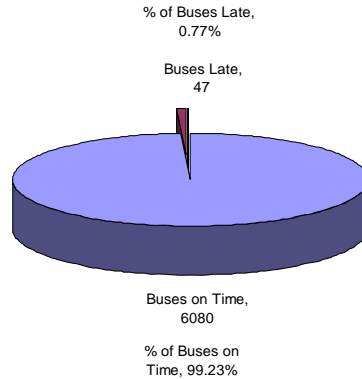
2.0 BUS TRAVEL TIMES

The IGA between CDOT and RTD prescribes triggers to determine if there is any degradation to travel times for buses and carpools. These triggers are:

- Exceeding travel time for more than one bus in an hour (provided the excess is not attributable to a stall, crash and closure of the lane, or special event).
- Exceeding the travel time for more than one day per week for three weeks in a row.
- Predictable patterns.

A total of 16 buses were late the afternoon of February 4 and the morning of February 5 due to a storm. From mid-day on February 5 to February 8 the system was down and no data was collected. On February 15 there was one late bus in the PM and 12 late in the AM, also attributable to adverse weather. On February 27 there was one late bus in the AM. This bus may have had problems because there are no other late cars or buses at this time. No data is collected on the weekends.

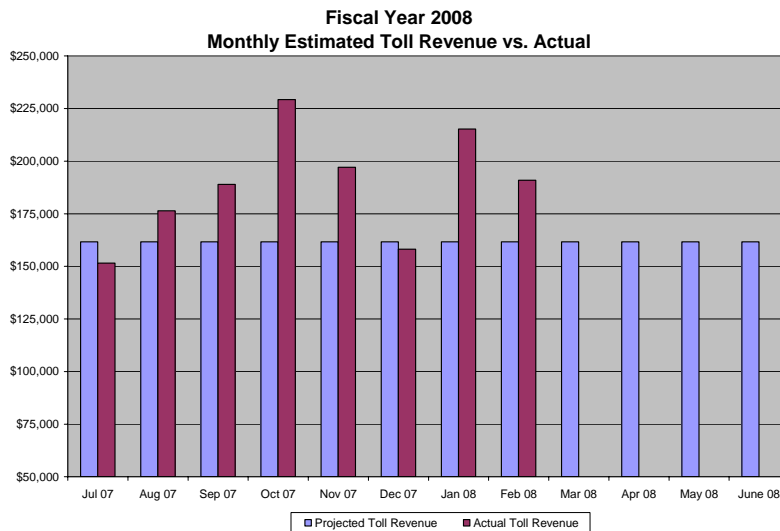
FEBRUARY 2008 BUS TRAVEL TIME PERFORMANCE



3.0 REVENUES AND EXPENDITURES

February 2008 toll revenues declined to \$190,945, due to the lanes being opened to all traffic and tolls being waived during the first three days of the I-25 sinkhole incident. Total revenues, including tolls, fees, and fines were \$211,300.50. Fees and fines collected this month totaled \$20,355.50, which represents 9.63 percent of total revenues.

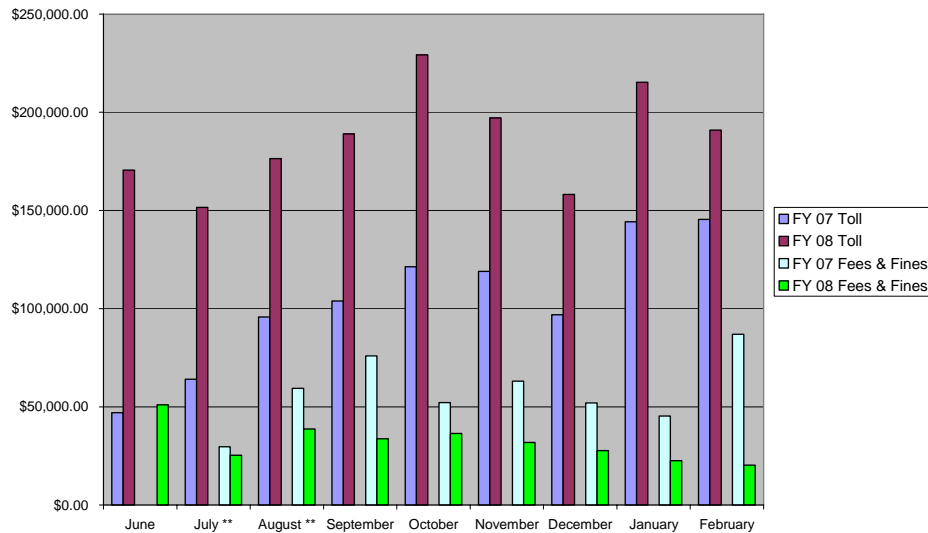
The following figure shows the projected vs. actual toll revenue to date for Fiscal Year 2008.



FY 08 tolls continue to exceed those of FY 07 while fees and fines continue to decline below the FY 07 levels.

Current fiscal year revenues compared to the previous fiscal year’s revenues are illustrated in the following figure.

FY 07/08 Revenue Comparison



The following table illustrates only CTE general administrative expenditures through February 2008.

FY 08 CTE General Administrative Expenditures - February 2008					
Item	Estimated Revenues	Estimated Expenditures	Actual	Encumbrances	Remaining
Revenues					
Interest Earnings from FY 07	\$ 217,000				\$ 217,000
Total Revenues	\$ 217,000				\$ 217,000
Expenditures					
General Engineering Consultant (8200)		\$ 50,000	\$ 18,465	\$ -	\$ 31,535
Traffic and Revenue Consultant ((8200)		\$ 50,000	\$ -	\$ -	\$ 50,000
Financial Advisor (8200)		\$ 50,000	\$ -	\$ -	\$ 50,000
Misc. (Marketing/Research, Advertisement) (8200)		\$ 10,000	\$ -	\$ -	\$ 10,000
IBTTA Dues & Conference Registration (8100)		\$ 4,000	\$ 1,900	\$ -	\$ 2,100
Misc. (Travel, Meals, Board Expenses) (8100)		\$ 3,000	\$ -	\$ -	\$ 3,000
CDOT/ CTE Staff Costs (8100)		\$ 50,000	\$ 8,812	\$ -	\$ 41,188
Total Expenditures		\$ 217,000	\$ 29,177	\$ -	\$ 187,823



MONTHLY PROGRESS REPORT – February 2008

The next table illustrates expenses specific only to the I-25/HOV Express Lanes.

FY 08 I-25 HOV/Express Lanes Expenditures (\$300) - February 2008					
Item	Estimated Revenues	Estimated Expenditures	Actual	Encumbrances	Remaining
Revenues					
Revised Estimated Toll Revenues	\$ 1,980,000		\$1,507,615		\$ 472,385
Revised Estimated Misc. Revenues	\$ 540,000		\$ 236,794		\$ 303,206
Loan from Transportation Commission	\$ -		\$ -		\$ -
Carryforward Balance from FY 07	\$ 1,213,462				
Total Revenues	\$ 3,733,462		\$1,744,409		\$ 1,989,053
Expenditures					
Contracted Snow Plow Operations		\$ 455,575	\$ -	\$ -	\$ 455,575
Colorado State Patrol		\$ 75,000	\$ 22,893	\$ -	\$ 52,107
E-470 Back office Operations		\$ 154,784	\$ -	\$ -	\$ 154,784
E-470 Oversight and Management		\$ 282,723	\$ -	\$ -	\$ 282,723
E-470 Maintenance Tech.		\$ 80,744	\$ 39,110	\$ -	\$ 41,634
Toll System Maintenance		\$ 30,000	\$ -	\$ -	\$ 30,000
VMS, Fiber, Travel Time, Surveillance		\$ 50,000	\$ -	\$ -	\$ 50,000
Non-revenue transponders		\$ 10,000	\$ -	\$ -	\$ 10,000
Marketing/ Outreach		\$ 10,000	\$ -	\$ -	\$ 10,000
User Survey		\$ 25,000	\$ -	\$ -	\$ 25,000
CDOT/ CTE Staff Costs		\$ 160,000	\$ 3,118	\$ -	\$ 156,882
Contingency		\$ 250,000	\$ -	\$ -	\$ 250,000
TC Loan Repayment		\$ 931,425	\$ -	\$ -	\$ 931,425
Sinking Fund for Rehab or Reconstruction		\$ 786,751	\$ -	\$ -	\$ 786,751
Region 6 Maintenance Costs		\$ 431,460	\$ 203,643	\$ -	\$ 227,817
Total Expenditures		\$ 3,733,462	\$ 268,764	\$ -	\$ 3,464,698

Note: There are currently twelve invoices that have not been processed for E-470, due to task order modifications. The estimated amount of these expenses will be \$185,900. An amended task order has been submitted for approval that will allow for payment of these outstanding amounts.

4.0 INCIDENTS

During the week the sinkhole was being repaired, travel through the express lanes was extremely smooth. While speeds were slightly slower, only one bus experienced a delay in the northbound direction.

5.0 ENFORCEMENT

Law enforcement activities during FY 08 are shown in the table below.

COLORADO STATE PATROL MANUAL CITATIONS							
	Total Stopped	Toll Citations	HOV Citations	Hazardous Citations	Seatbelt Citations	All Other Citations	Arrests
June 06	320	43	59	22	5	7	1
July 06	152	20	26	24	7	19	1
August 06	127	19	18	45	11	37	1 (DUI)
September 06	88	7	7	26	4	7	
October 06	42	5	8	15	4	73	
November 06	56	0	0	14	7	3	
December 06 *							
January 07	36	2	4	9	1	10	2 (misd)
February 07	78	13	15	34	8	24	
March 07	127	6	18	46	10	32	1
April 07	36	2	8	6	0	3	
May 07	98	11	14	36	17	37	2
June 07 *							
July 07	41	5	5	31	7	12	31
August 07	81	6	10	47	8	19	1
September 07	84	6	9	16	8	15	
October 07	104	16	13	39	10	23	
November 07	53	9	6	23	3	11	1
December 07	97	8	10	32	5	7	
January 08	95	13	10	37	6	12	1
February 08	90	22	31	25	11	28	6 (2 felony, 4 misd)

* No enforcement



Totals for the violations closed for February 7 between 3:00 and the time the lane was actually shut down, follow:

- *There were 80 citations closed*
- *Total Tolls \$130.00, Total Fees \$564.00, Total Fines \$5,600.00*
- *Closed 14 violations that had not made it to citation status yet for a total of \$14 in tolls*
- *The citations have a note in the account with user “sinkhole” stating the closing reason*
- *These will show up as \$0 paid and closed citations on CTE’s Paid Violation Report*

6.0 OPERATIONAL ISSUES

A power outage occurred the morning of February 14.