

WELCOME

to the

US 6 West/SH 139 Access Plan Open House

At tonight's meeting you can:

- ◆ Meet the study team
- ◆ Find out the study's purpose, process, and schedule
- ◆ Learn about the methods and benefits of access management
- ◆ Review the study's recommendations

Study team members wearing name badges can answer your questions and listen to your comments.

Please take a moment to complete a comment form before you leave.

Thank You
We Appreciate Your Participation

OVERVIEW

What is an access plan?

- Any intersection or driveway along a roadway is called an access point. The purpose of an access plan is to determine what access points will be allowed, where they will be located, and what kinds of traffic movements will be allowed at each one.

What are the goals of the access plan?

- Provide for the safe and efficient flow of traffic
- Provide appropriate level of access to properties adjacent to the highway

Who is conducting the study?

- Colorado Department of Transportation, Mesa County, the City of Fruita, and the City of Grand Junction

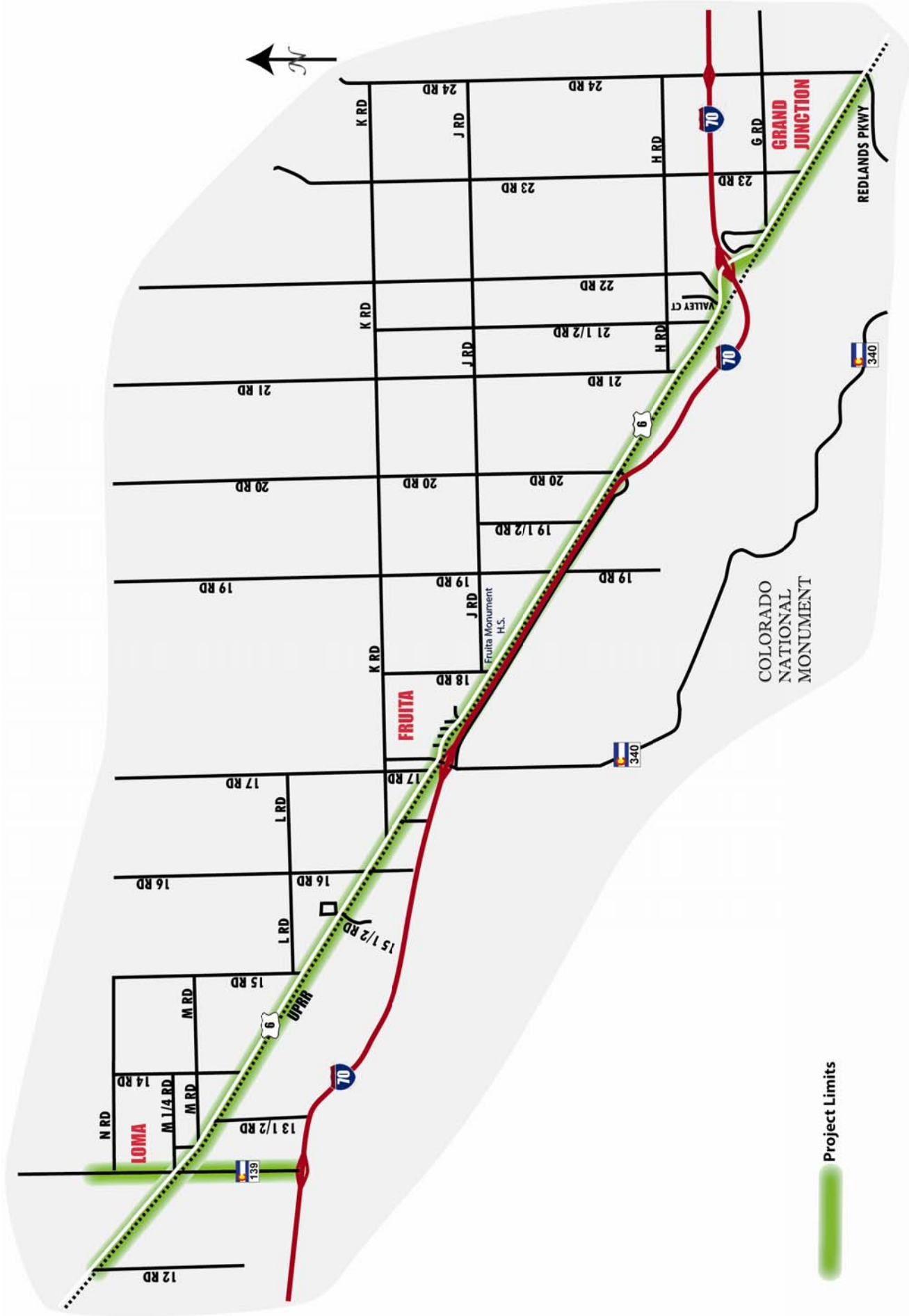
WHY HAVE AN ACCESS PLAN?

Colorado's state highways are a valuable resource and major public and private investment. All users of the state highway system should have the ability to move freely, to travel on a safe highway system, and to expect the efficient expenditure of public funds.

An Access Plan aids in the management of that investment to:

- Protect the public health, safety, and welfare
- Maintain smooth traffic flow
- Maintain the highway storm drainage
- Protect the function of state highways while considering state, regional, and local needs and interests

US 6 WEST/SH 139 ACCESS PLAN



Project Limits

HOW WILL THE ACCESS PLAN BE DEVELOPED?

- Present a draft plan to the public for review (completed in June).
- Modify the draft plan as appropriate based on public comments (completed in September).

We are here:

- Present the final draft to the public and local elected officials
- Formally adopt the plan:
 - An Agreement between CDOT, Mesa County, the City of Fruita, and the City of Grand Junction
 - Approval by the Colorado Transportation Commission and the CDOT Chief Engineer

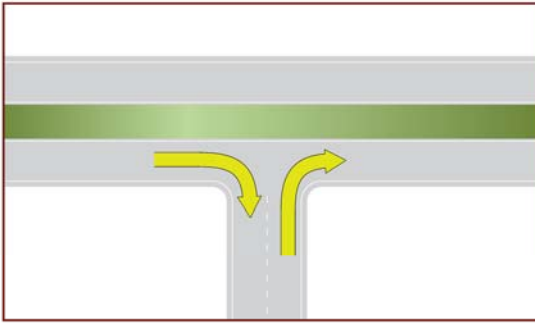
PLAN IMPLEMENTATION

Construction of the recommended access modification may be completed using public and/or private funding. The following cases will trigger construction:

1. A property redevelops or changes use. In this case, limited improvements at the specific access point will be required. These improvements will be compatible with the access plan (Private Funding).
2. The City and/or County obtains funding to improve a segment of the Project Corridor or implement an alternate route (Public Funding).
3. State and/or Federal Funding are available to improve a segment of the Project Corridor. (Public Funding)
4. In instances where full implementation is not possible at the time access changes are required, phasing will be permitted that does not preclude the final access control plan conditions.

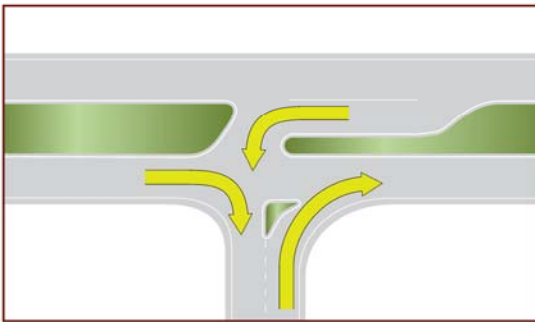
Types of Access

Right-in, Right-out



- Only right turns are allowed
- Traffic median prevents left turns and straight movements—these movements must be completed at another intersection

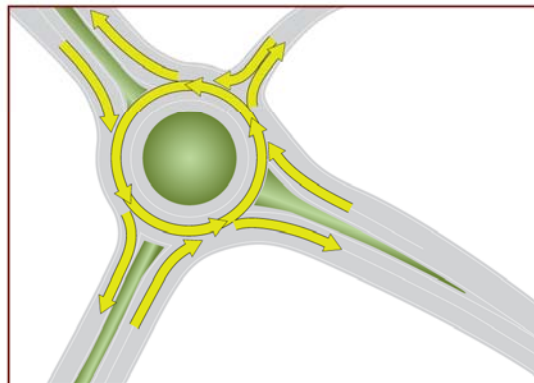
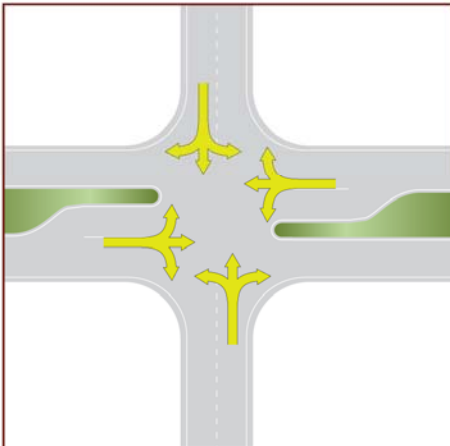
3/4 Movement



- Right-in, right-out, and left-in are allowed
- Traffic median prevents left-out and straight movements—these movements must be completed at another intersection

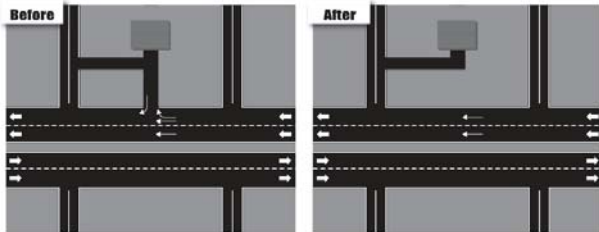
Full Movement

- All movements in all directions are allowed



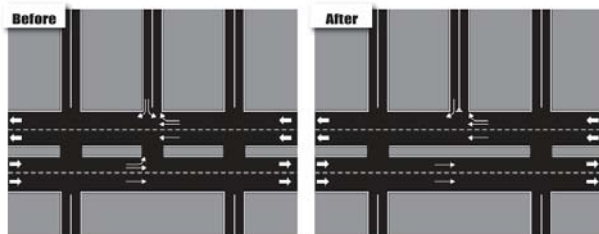
Access Management Methods

Access Elimination



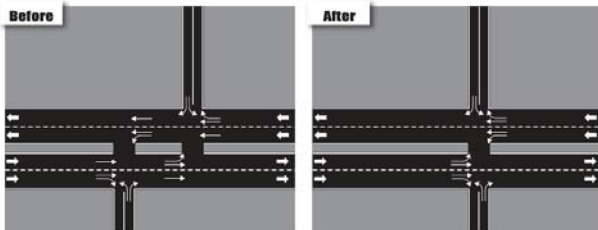
- Access to local properties through secondary roadways
- Consolidate number of access locations where vehicles may enter or exit highway
- Reduce the number of conflict points

Access Conversion with Median Treatment



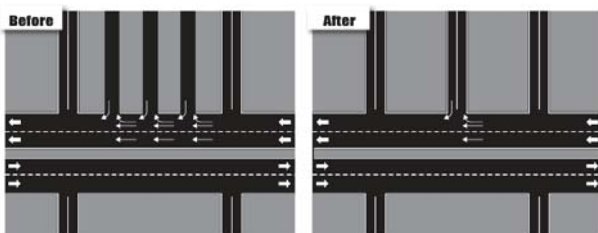
- Eliminate some or all turning movements
- Reduce the number of conflicts between left turning vehicles and through vehicles on the highway

Access Relocation



- Align opposite approaches
- Create a more familiar intersection design

Access Consolidation

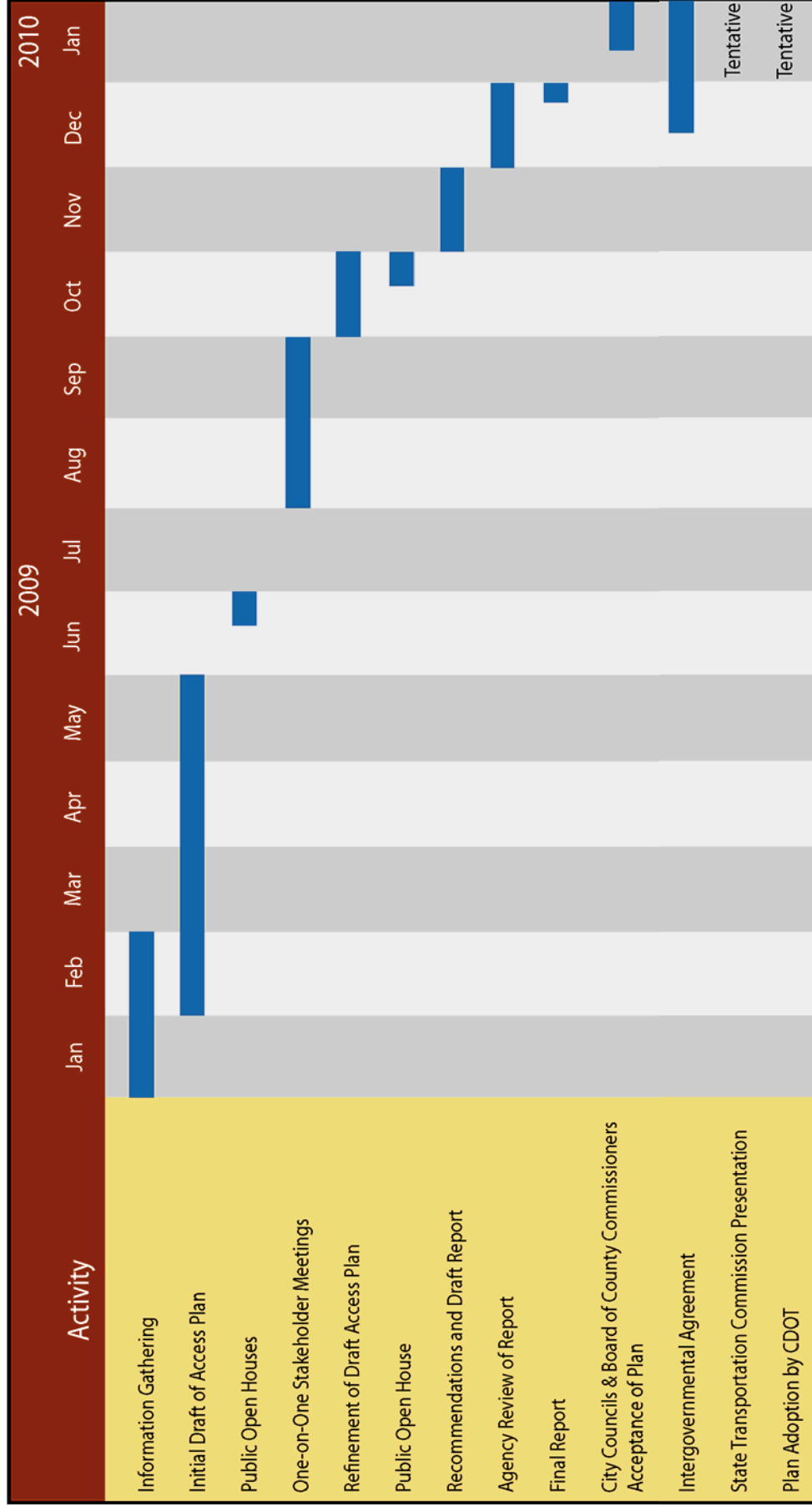


- Consolidate adjacent access points into one location
- The number of conflict points are reduced

Location of potential future traffic signals will be established as part of the Access Plan

**US 6 WEST/SH 139
ACCESS PLAN**

Timeline



HOW CAN I STAY INVOLVED?

- Complete a comment form. Leave the form at the open house, or send to :

US 6 West/SH 139 Access Plan
c/o Larissa Spear
Project Assistant
Hartwig & Associates, Inc.
304 Inverness Way South, Suite 365
Englewood, CO 80112
lspear@hartwigeng.com

- Attend future public hearings.
- Contact the study team:

Alisa Babler
Colorado Department of Transportation
970-683-6274
alisa.babler@dot.state.co.us

Ken Haley
City of Fruita
970-858-8377
khaley@fruita.org

Ken Simms
Mesa County
970-244-1830
ken.simms@mesacounty.us

Jody Kliska
City of Grand Junction
970-244-1591
jodyk@ci.grandjct.co.us

- Visit the study web site: www.dot.state.co.us/travelinfo/studies.htm