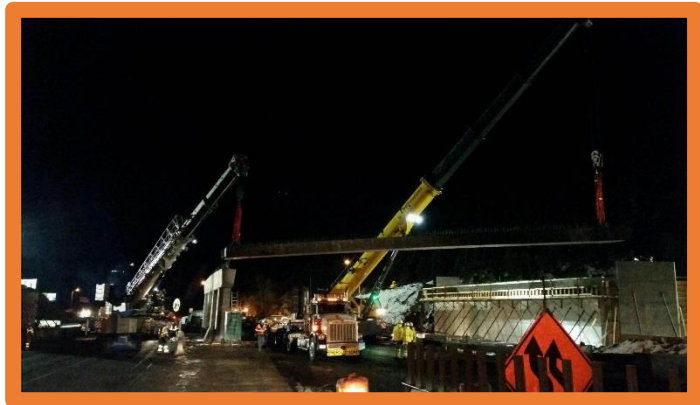




Eastbound I-70 PPSL March 2015 Newsletter

As you know, the SH-103 Bridge re-opened to vehicular traffic on Friday, February 20th. Although the bridge has re-opened to motorists, additional work must be completed before the bridge is open for bike and pedestrian traffic, including:

- Form and pour bridge rail
- Metal rail installation
- Form and pour approach slabs
- Form and pour sidewalks



Ramp work at Exit 240 is expected to start by May. During this time, each ramp will be closed and upgraded separately over the course of a few weeks. Access across the bridge will remain open.

Prep work for the Exit 241 interchange is expected to begin this week. The existing 241 bridge will remain in service until the new bridge is completed in the Fall of 2015. Daily lane closures, night work, and minimal overnight detours will be required to build the new bridge. Those details will be communicated as soon as more information is known.

Additionally, construction crews continue to make progress on the eastbound I-70 shoulder work between Empire Junction and Idaho Springs. Work includes night paving, some 24-hour single lane closures on I-70 near Downieville, and rock scaling operations.

Once completed, the tolled Express Lane on the eastbound I-70 shoulder will provide increased mobility and relieve congestion during periods when traffic volumes are highest. Construction is scheduled to be complete in fall 2015, with the Express Lane being operational before next ski season commences. The new lane will ultimately save motorists an average of 30 minutes in travel time. The project is part of CDOT's comprehensive plan to improve travel in the I-70 Mountain Corridor.

For up-to-date lane closure notifications, please continue to visit the project website (www.i70ppsl.com) or call the project hotline 303-223-6581 for additional information. To receive real-time updates about road conditions in your area, visit www.coloradodot.info and click on the green cell phone icon in the upper right hand corner of the page.

Sign-up for GovDelivery

If you are interested in receiving upcoming project information please go to www.coloradodot.info and click on the green cell phone icon in the upper right-hand corner and select the PPSL project.

Contact Information

303-223-6581

www.I70ppsl.com