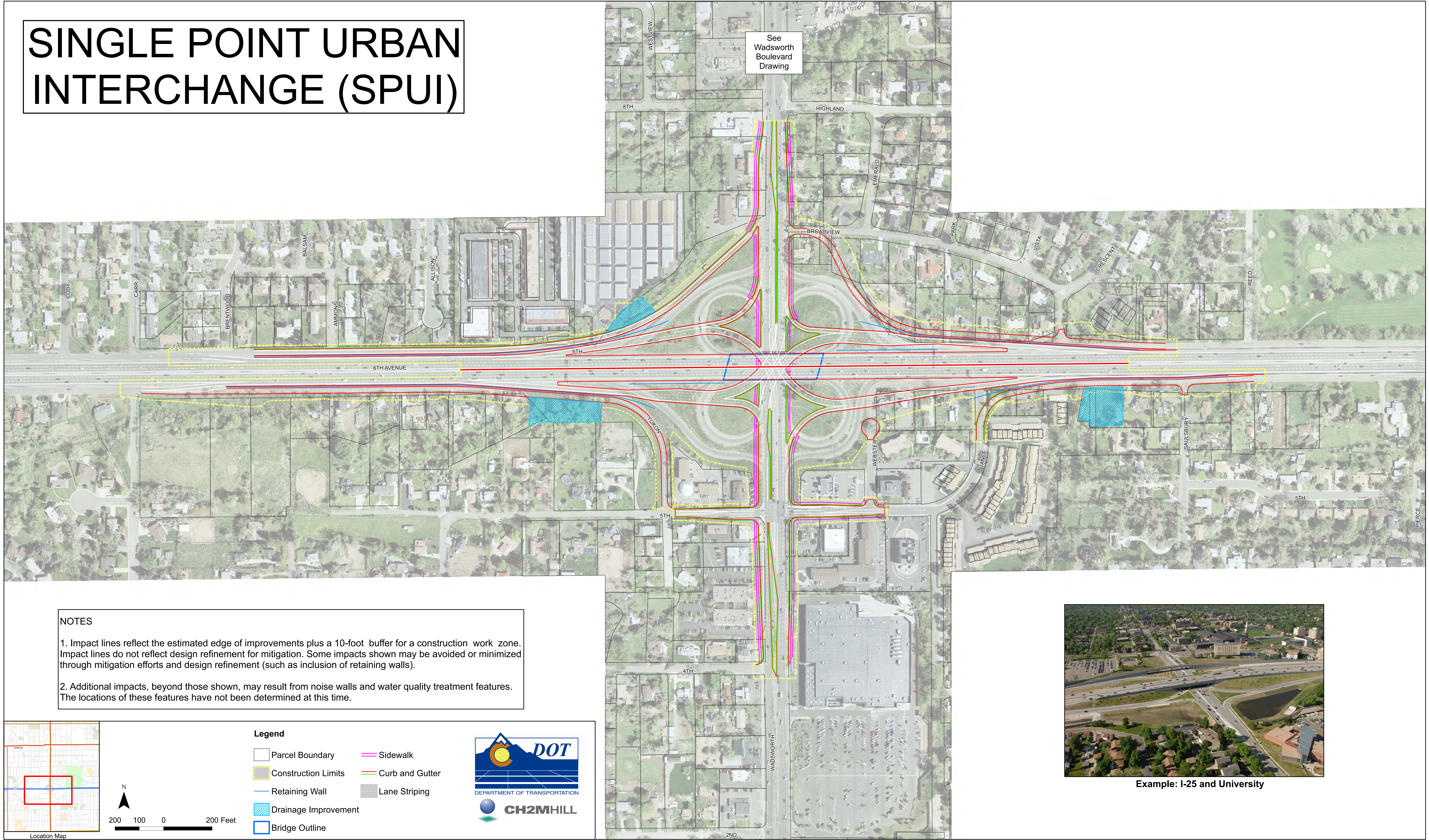
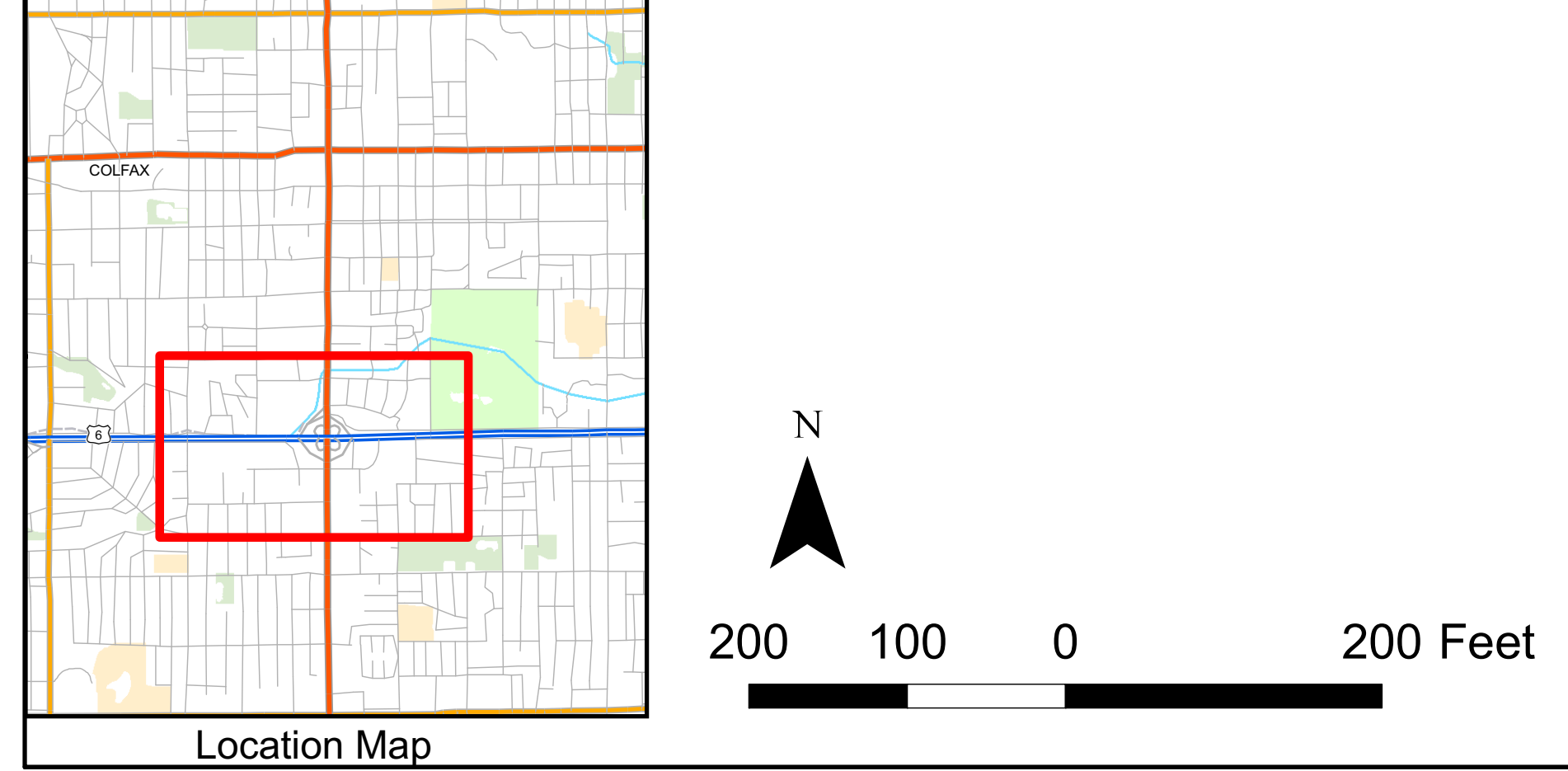


SINGLE POINT URBAN INTERCHANGE (SPUI)

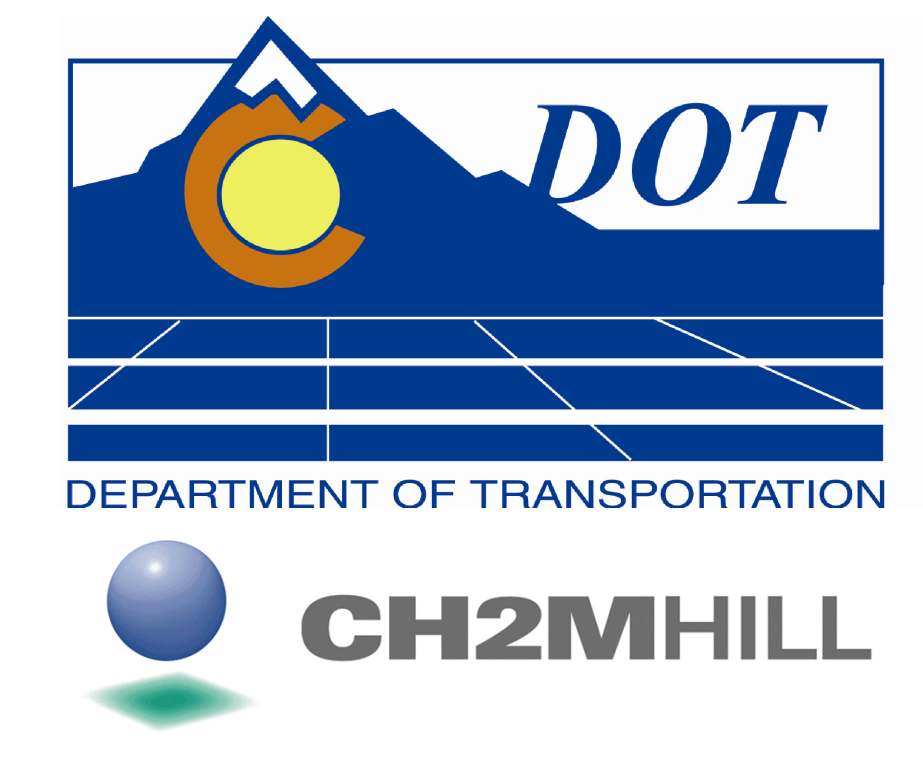


NOTES

1. Impact lines reflect the estimated edge of improvements plus a 10-foot buffer for a construction work zone. Impact lines do not reflect design refinement for mitigation. Some impacts shown may be avoided or minimized through mitigation efforts and design refinement (such as inclusion of retaining walls).
2. Additional impacts, beyond those shown, may result from noise walls and water quality treatment features. The locations of these features have not been determined at this time.



- Legend**
- Parcel Boundary
 - Construction Limits
 - Retaining Wall
 - Drainage Improvement
 - Bridge Outline
 - Sidewalk
 - Curb and Gutter
 - Lane Striping



Example: I-25 and University