

Region 1 road kill update, 2014

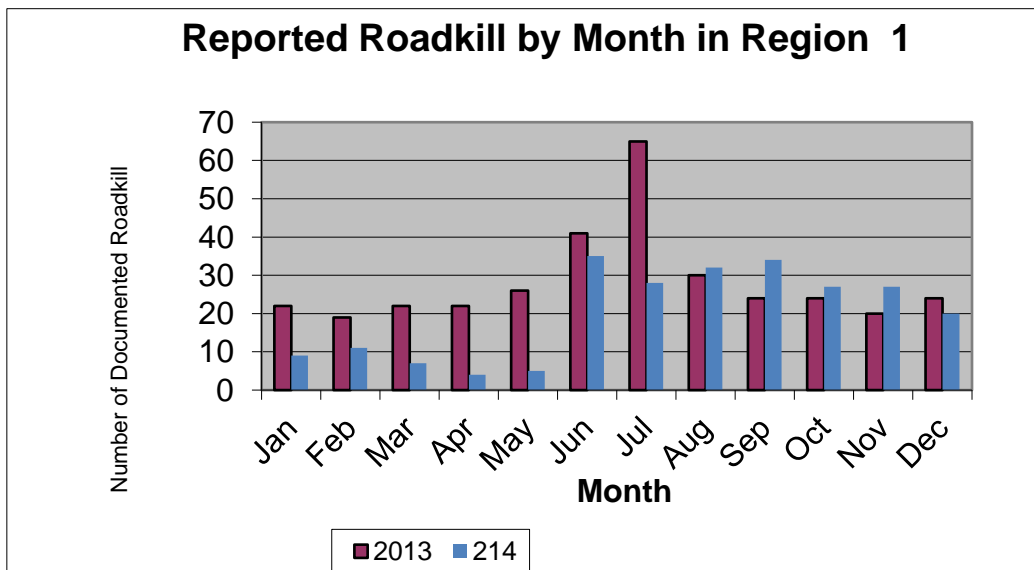
1/7/2015

Totals from CDOT personnel

Total number of reported animals killed 239

Note: Regional boundaries were reconfigured in 2013

BY MONTH	2013	2014
Jan	22	9
Feb	19	11
Mar	22	7
Apr	22	4
May	26	5
Jun	41	35
Jul	65	28
Aug	30	32
Sep	24	34
Oct	24	27
Nov	20	27
Dec	24	20
Total	339	239



Region 1 road kill update, 2014

1/7/2015

2014 BY SPECIES			
CAT	1	FOX	3
COYOTE	9	OWL	1
DEER	116	RAPTOR	1
DOG	2	SHEEP	1
ELK	11	UNK	94

SPECIES BY MONTH		
Jan	DEER	3
	UNK	6
Feb	DEER	1
	UNK	10
Mar	DEER	3
	ELK	4
April	COYOTE	1
	DEER	2
	UNK	1
May	CAT	1
	DEER	3
	UNK	1
June	DEER	5
	UNK	30
July	DEER	16
	DOG	1
	UNK	11
Aug	DEER	27
	ELK	1
	RAPTOR	1
	UNK	3
Sept	DEER	10
	UNK	24

SPECIES BY MONTH		
Oct	COYOTE	3
	DEER	13
	ELK	3
	FOX	2
Nov	UNK	6
	COYOTE	3
	DEER	18
	ELK	3
	SHEEP	1
Dec	UNK	2
	COYOTE	2
	DEER	15
	DOG	1
	FOX	1
	OWL	1

Region 1 road kill update, 2014

1/7/2015

Hwy	MP	Total
005A		
	0-10	1
006G		
	270-280	2
	280-290	4
025A		
	180-190	1
	210-220	2
	220-230	1
040A		
	250-260	1
044A		
	0-10	2
058A		
	0-10	1
070A		
	220-230	2
	230-240	7
	240-250	2
	250-260	22
	260-270	9
	310-320	13
	320-330	12
072A		
	20-30	1
074A		
	0-10	13
	10-20	10
075B		
	10-20	1
085B		
	180-190	1
	190-200	1
	200-210	7
	210-220	1
093A		
	0-10	3
	10-20	3
121A		
	0-10	1
121B		
	0-10	5
270A		
	0-10	2

Hwy	MP	Total
285D		
	230-240	35
	240-250	49
	250-260	2
287C		
	300-310	1
470A		
	0-10	2
	10-20	9
	20-30	10

Region 1 road kill update, 2014
1/7/2015

Species	hwy mp	#
CAT		
044A		
3		1
COYOTE		
025A		
223.4		1
070A		
246.5		2
247.5		1
074A		
0.1		1
121B		
2		1
270A		
1.1		1
285D		
232.5		1
236.1		1
DEER		
005A		
4.3		1
006G		
271		2
040A		
252		1
044A		
2.242		1
058A		
0.71		1
070A		
217.6		1
219		1
226.1		1
231		1
232		1
234.5		1
240		1
241		1
246.9		2

Species	hwy mp	#
Deer		
070A		
248.5		1
249		1
250.4		1
251		1
252		1
255		1
257		1
258		2
250.3-		
258.7		4
259-		
264		5
072A		
15		1
074A		
2.8		1
3		1
4		2
5		2
6		1
085B		
184.8		1
190		1
196.5		1
197.3		2
200		2
202		1
203		1
093A		
1		1
2.5		1
4		1
8		2
121B		
1.3		1
2		2
3		1
285D		
232		1

Species	hwy mp	#
Deer		
285D		
232.1		1
233		2
233.5		1
234		1
235		4
235.3		1
236		4
237		1
238.8		2
240		1
241.5		1
242		1
243		3
245		1
228.4-249.9		17
287C		
301		1
470A		
1.27		1
4.28		1
5.53		1
9		1
13.92		1
13.95		1
16.85		1
17		2
17.001		1
20		1
21.5		1
23.5		1
DOG		
085B		
208.66		1
270A		
4.6		1

Region 1 road kill update, 2014
1/7/2015

Species	hwy mp	#
ELK		
070A		
253		1
256.7		1
0-18		3
074A		
4		2
5		1
7.1		1
093A		
6		1
470A		
5.6		1
FOX		
285D		
239.5		1
240		1
246.6		1
OWL		
470A		
20		1
RAPTOR		
025A		
180.4		1
SHEEP		
070A		
231.5		1
UNK		
006G		
276		2
280		1
283		1
025A		
207		1
209		1
070A		
225		1
230.5		1
250		2
258.7		1
306-331		25

Species	hwy mp	#
UNK		
074A		
0-18		11
075B		
7		1
121A		
9		1
285D		
230		1
229-250		38
470A		
5		1
8		1
14		2
19		1
22.5		1

Patrols Reporting	
1507	6817
1512	6819
1513	6830
1516	1504
1520	1509
1521	1511
1522	1513
1524	1516
1526	1522
1527	1526
1530	1530
1535	1927
1545	1930
1927	1934
1930	1935
1935	1941
1941	6814
1945	6821
6813	6830
6815	

Region 2 road kill update, 2014

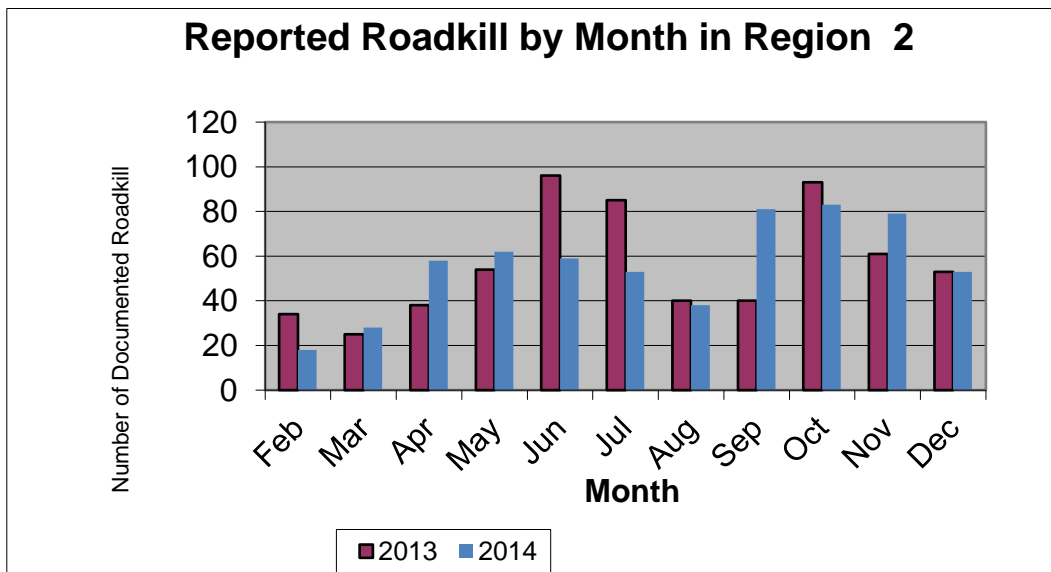
1/7/2015

Totals from CDOT personnel

Total number of reported animals killed 632

Note: Regional boundaries were reconfigured in 2013

BY MONTH	2013	2014
Jan	16	20
Feb	34	18
Mar	25	28
Apr	38	58
May	54	62
Jun	96	59
Jul	85	53
Aug	40	38
Sep	40	81
Oct	93	83
Nov	61	79
Dec	53	53
Total	635	632



Region 2 road kill update, 2014
1/7/2015

2014 BY SPECIES	
BADGER	1
BEAR	2
CAT	4
COW	2
COYOTE	6
DEER	439
DOG	7
ELK	41
FOX	2
HAWK	1
HORSE	3
LION	1
OWL	1
PORCUPINE	1
PRONGHORN	9
RACCOON	8
SKUNK	9
UNK	95

SPECIES BY MONTH	
Jan	
DEER	14
ELK	2
OWL	1
UNK	3
Feb	
COW	1
DEER	8
ELK	1
SKUNK	1
UNK	7
Mar	
CAT	1
DEER	19
DOG	1
ELK	3
HAWK	1
RACCOON	1
SKUNK	2

SPECIES BY MONTH	
April	
BADGER	1
CAT	1
DEER	39
DOG	1
ELK	6
FOX	1
LION	1
UNK	8
May	
COYOTE	1
DEER	36
DOG	2
ELK	8
FOX	1
PRONGHORN	5
UNK	9
June	
COYOTE	1
DEER	41
DOG	1
ELK	2
HORSE	1
PRONGHORN	1
RACCOON	1
SKUNK	1
UNK	10
July	
CAT	1
DEER	37
DOG	2
ELK	2
PORCUPINE	1
RACCOON	5
SKUNK	2
UNK	3
Aug	
CAT	1
DEER	27
ELK	1
UNK	9

SPECIES BY MONTH	
Sept	
BEAR	2
DEER	46
ELK	5
PRONGHORN	1
SKUNK	3
UNK	24
Oct	
DEER	65
ELK	5
PRONGHORN	1
UNK	12
Nov	
COW	1
COYOTE	2
DEER	70
ELK	1
HORSE	2
UNK	3
Dec	
COYOTE	2
DEER	37
ELK	5
PRONGHORN	1
RACCOON	1
UNK	7

Region 2 road kill update, 2014
1/7/2015

BY HWY	MILE MARKER	#
009A		
	0-10	3
	10-20	8
	20-30	3
	30-40	13
	40-50	1
	50-60	3
009B		
	60-70	2
009C		
	70-80	3
010A		
	10-20	1
	50-60	1
012A		
	0-10	2
	10-20	1
	20-30	1
021A		
	130-140	5
	140-150	1
021B		
	150-160	4
024A		
	240-250	5
	250-260	8
	260-270	1
	280-290	3
	290-300	48
	300-310	28
024G		
	310-320	3
	320-330	17
025A		
	20-30	1
	40-50	5
	50-60	3
	60-70	10
	70-80	4
	80-90	14
	90-100	10
	100-110	12
	120-130	1
	130-140	6

BY HWY	MILE MARKER	#
025A		
	140-150	21
	150-160	23
	160-170	8
045A		
	10-20	2
047A		
	0-10	2
050A		
	240-250	12
	250-260	13
	260-270	1
	270-280	7
	280-290	18
	290-300	4
	300-310	2
050B		
	330-340	2
	340-350	2

Region 2 road kill update, 2014
1/7/2015

BY HWY	MILE MARKER	#
050B		
	360-370	1
	420-430	1
	430-440	1
	440-450	2
	450-460	4
050C		
	0-10	2
	10-20	2
	20-30	1
067A		
	0-10	8
	10-20	5
067D		
	80-90	2
	90-100	1
069A		
	30-40	1
	60-70	4
	70-80	7
078A		
	20-30	1
085A		
	130-140	2
	140-150	1
094A		
	0-10	9
	10-20	11
	20-30	1
	30-40	4
096A		
	0-10	2
	10-20	13
	20-30	7
105A		
	10-20	1
109A		
	30-40	1
	50-60	1
	70-80	1
115A		
	0-10	17
	10-20	16
	20-30	11

BY HWY	MILE MARKER	#
115A		
	30-40	32
	40-50	29
	50-60	3
120A		
	0-10	1
160A		
	290-300	1
	300-310	9
165A		
	20-30	1
	30-40	3
	40-50	6
285D		
	170-180	9
	180-190	2
	190-200	5
	200-210	4
	210-220	4
	220-230	11
	230-240	14
287A		
	60-70	1
	80-90	1
287B		
	100-110	1
	110-120	1
385A		
	100-110	4
	110-120	1

Species	hwy	mp	#
BADGER			
	009A		
	29		1
BEAR			
	010A		
	49		1
	115A		
	43		1

Region 2 road kill update, 2014
1/7/2015

Species	hwy mp	#
CAT		
050A		
288		1
067A		
9.8		1
115A		
12		1
16.5		1
COW		
024A		
253		1
025A		
76		1
COYOTE		
009A		
45		2
024A		
248		1
252		1
025A		
156.5		1
285D		
198		1
DEER		
009A		
3		1
4.5		1
4.8		1
5		1
9.8		3
10		2
10.5		1
16.7		2
18.8		1
26		1
26.1		1
30.9		1
31		1
34.5		1
009B		
59		1

Species	hwy mp	#
DEER		
009C		
70.2		1
73.3		1
012A		
2		1
3.92		1
9		1
15		1
021A		
132		1
133		1
133.5		1
134.9		1
021B		
145.3		1
146		1
151.4		1
024A		
238.5		1
239		1
263		1
283		1
283.2		1
285		1
286		1
287		6
288		1
288.4		1
288.5		1
288.6		1
289		2
289.1		4
289.8		1
290		1
291		3
291.5		1
291.8		1
291.9		1
292		7
292.2		1
292.5		2
292.7		1

Species	hwy mp	#
DEER		
024A		
293.3		1
293.5		1
295.6		1
296.8		1
297		1
297.4		1
297.5		1
298		1
299		4
299.1		2
299.5		1
299.6		1
300		2
300.2		2
300.3		1
301		1
302		2
302.1		1
303.2		1
024G		
310.1		1
310.2		1
314.3		1
315.8		1
316		2
316.5		1
316.6		1
316.7		2
317		4
317.1		2
317.7		1
318.6		2
025A		
19		1
38.1		1
41.4		1
42		1
49		2
51		1
59		1
61		1

Region 2 road kill update, 2014
1/7/2015

Species	hwy mp	#
DEER		
025A		
69		1
77.5		1
78		1
81.9		1
82.6		1
87.2		1
89		1
90		2
91		1
92		1
92.1		1
93		1
94		1
94.1		1
96		1
99		1
119.9		1
128.5		2
128.6		1
130		1
133.4		1
136.1		1
136.3		1
136.5		1
137		1
139		2
140		1
141		5
141.8		1
143		3
143.8		1
144.5		1
144.6		2
145		2
145.3		1
145.5		1
145.75		1
145.9		1
146		5
147		2
149		1
149.4		1
149.5		1

Species	hwy mp	#
DEER		
025A		
150		1
151.85		1
151.87		1
151.9		1
152		1
154.1		1
155		2
157		1
157.5		1
161.2		1
045A		
5.45		2
050A		
241.2		1
241.3		1
241.4		2
241.5		1
241.6		2
242		1
243		1
244.98		1
245.28		1
245.5		1
246		1
246.8		1
247.9		1
250.2		2
250.96		1
250.98		1
251.6		1
252.2		1
253.25		1
257		1
266.3		1
266.5		1
268.2		1
268.5		1
271.9		1
274.5		2
275		1
276		1
277		1
277.6		2

Species	hwy mp	#
DEER		
050A		
278.1		1
279.3		1
280		1
280.3		1
280.9		3
281.5		1
282		4
283.2		1
286.5		1
287		1
287.4		1
297		2
050B		
357.2		1
417.4		1
429		1
439.53		1
443.5		1
446		1
451		1
451.5		1
453		1
050C		
3.5		1
3.55		1
8.5		1
12		1
16.93		1
067A		
0.3		2
0.8		1
1		1
3.5		1
3.7		1
9.8		1
067D		
77		1
83.7		1
89		1
069A		
57		1
59.5		1
64.1		1

Region 2 road kill update, 2014
1/7/2015

Species	hwy mp	#
DEER		
069A		
	64.5	1
	66.4	1
	69.2	1
	71.55	1
	71.8	1
	72.6	1
	74.2	1
078A		
	16	1
085A		
	129.56	1
	135.4	1
094A		
	1.8	1
	3	1
	4	1
	5.7	1
	5.9	3
	6	1
	6.5	1
	6.6	1
	6.7	1
	7	2
096A		
	3.9	1
	4.3	1
	7.5	2
	8.05	1
	8.2	1
	8.5	2
	9.1	2
	14.8	2
	22.1	1
	22.4	1
	23.5	1
	23.7	1
	24.6	1
	24.8	1
105A		
	7.1	1
109A		
	53	1

Species	hwy mp	#
DEER		
115A		
	1.4	2
	1.8	1
	2.9	1
	3	1
	3.5	1
	3.8	1
	5	1
	5.3	1
	5.5	1
	6	1
	7	1
	7.4	1
	10	1
	24.1	1
	24.9	1
	25.6	1
	26.7	1
	26.8	1
	27.2	1
	27.3	1
	27.7	1
	27.8	1
	27.9	1
	28	1
	28.2	1
	30	1
	30.4	1
	30.7	1
	30.8	1
	31	2
	31.1	1
	31.2	1
	31.6	1
	32	1
	32.4	1
	32.9	2
	33.3	1
	34.5	1
	34.9	1
	35.4	1
	35.7	1
	37.3	1

Species	hwy mp	#
DEER		
115A		
	37.4	1
	37.5	1
	38.2	2
	38.5	1
	38.6	2
	38.8	1
	38.9	1
	39.2	1
	39.4	1
	39.6	1
	39.65	1
	40	3
	40.5	3
	40.8	1
	44	1
	44.2	1
	45	1
	45.3	1
	46.5	1
160A		
	298	1
	299	1
	299.5	2
	300.8	1
	301	1
	302.2	1
	303.3	1
285D		
	184	1
	203	2
	207	1
	212	2
	214.8	1
	216	1
	217	1
	219.3	1
	220	1
	221	1
	221.5	1
	222.5	1
	224	2
	226.4	1

Region 2 road kill update, 2014
1/7/2015

Species	hwy mp	#
DEER		
285D		
227.1		1
227.2		2
227.5		3
227.6		1
228		2
228.1		1
228.7		1
228.8		1
287A		
57		1
76		1
287B		
102.5		1
110		1
385A		
97		1
101.5		2
102		1
106		1
DOG		
024A		
298		1
025A		
146		1
094A		
9.1		1
16.2		1
27.9		1
115A		
16		1
43		1
ELK		
009A		
26.2		1
28		1
32.3		1
33.1		0

Species	hwy mp	#
ELK		
009B		
55.2		1
009C		
68.7		1
010A		
9.3		1
024A		
281		1
025A		
59.8		1
75.1		1
80.1		1
81		1
83		2
160		1
050A		
250.5		1
067A		
2.5		1
069A		
27.8		1
71.8		1
096A		
10.7		1
12.25		1
15.7		1
115A		
23.4		1
32.1		1
160A		
285		1
285D		
166.6		1
168.2		1
168.6		1
170.5		1
171.4		2
172.8		2
174		1

Species	hwy mp	#
ELK		
285D		
181.8		1
185.4		1
185.5		1
188		1
194.5		1
197.2		1
218.2		1
228.6		1
FOX		
115A		
36.9		1
285D		
221.3		1
HAWK		
025A		
164.9		1
HORSE		
024A		
243.5		1
094A		
4		1
5.5		1
LION		
050A		
243		1
OWL		
024G		
316		1
PORCUPINE		
120A		
2.8		1
PRONGHORN		
009A		
46.1		1
021B		
153.2		1
024A		
236.5		1
253		1

Region 2 road kill update, 2014
1/7/2015

Species	hwy mp	#
PRONGHORN		
025A		
59		1
067A		
5.5		1
094A		
30		1
160A		
295.7		1
285D		
193.5		1
RACCOON		
009A		
14		1
024A		
288.5		2
025A		
67		1
050B		
335.2		1
085A		
132		1
115A		
3.4		1
34.9		1
SKUNK		
024A		
303		2
094A		
26.1		1
30.2		1
115A		
5.5		2
11.1		3

Species	hwy mp	#
UNK		
009A		
28		1
29		1
30		1
31		1
41		1
021A		
134.2		1
135		1
024A		
239		1
246		1
248		1
252		2
288.11		1
288.5		4
290		1
291		1
298		1
025A		
43		1
44		1
69.8		1
74		1
75		1
81		2
83.5		1
95		1
95.4		1
102.27		8
134.5		1
140		1
59-74		6
047A		
2.41		2
050A		
241.3		1
050B		
332.3		1
333		1
343.6		1

Species	hwy mp	#
UNK		
067A		
10.5		2
094A		
0.6		5
096A		
11.2		1
109A		
31		1
65.3		1
115A		
3		4
3.7		1
6		1
6.6		1
7		1
15.9		1
17.3		3
18.1		2
25.1		1
31.3		2
34.7		1
44		1
1-7.5		4
165A		
24		1
28		3
36		6

Region 2 road kill update, 2014
1/7/2015

Patrols Reporting	
2401	2465
2402	2467
2403	2468
2404	2469
2405	2472
2406	2475
2407	2402
2408	2403
2409	2404
2412	2405
2415	2406
2416	2407
2417	2408
2418	2409
2419	2415
2420	2416
2423	2419
2424	2423
2425	2424
2426	2426
2427	2427
2428	2428
2432	2432
2433	2437
2437	2439
2438	2453
2439	2458
2441	2459
2446	2460
2452	2465
2453	2467
2458	2469
2459	2472
2460	2475

Region 3 road kill update, 2014

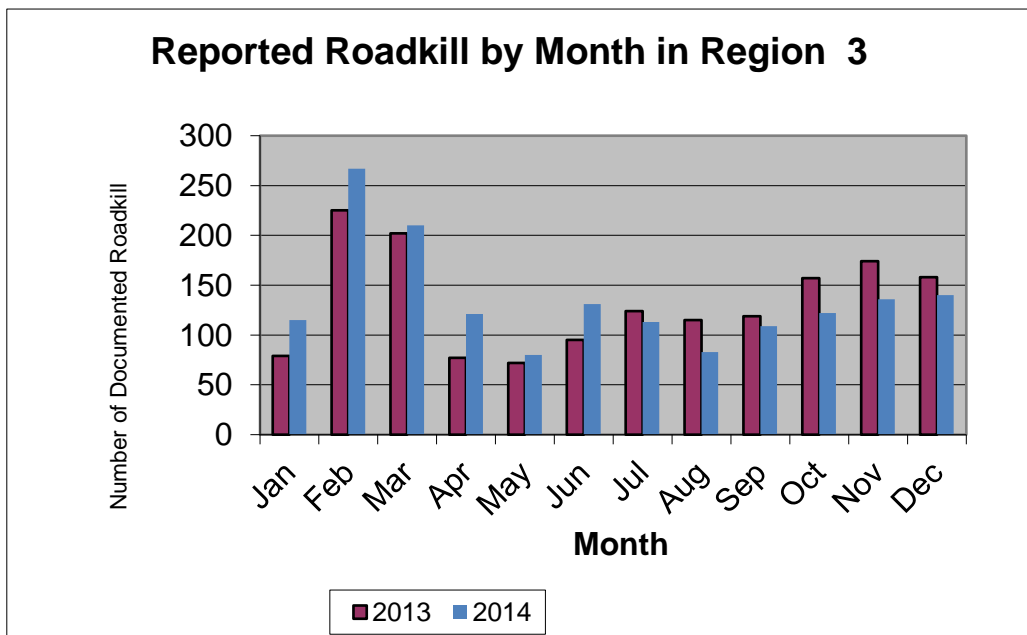
1/8/2015

Totals from CDOT personnel

Total number of reported animals killed 1627

Note: Regional boundaries were reconfigured in 2013

BY MONTH	2013	2014
Jan	79	115
Feb	225	267
Mar	202	210
Apr	77	121
May	72	80
Jun	95	131
Jul	124	113
Aug	115	83
Sep	119	109
Oct	157	122
Nov	174	136
Dec	158	140
Total	1597	1627



Region 3 road kill update, 2014

1/8/2015

2014 BY SPECIES	
BEAR	20
BEAVER	2
BIGHORN	1
BIRD	1
CAT	3
COW	2
COYOTE	11
DEER	1149
DOG	5
EAGLE	2
ELK	175
FOX	16
LION	1
MARMOT	1
MOOSE	5
OWL	1
PORCUPINE	8
PRONGHORN	6
RABBIT	5
RACCOON	44
SHEEP	1
SKUNK	33
TURKEY	1
UNK	134

SPECIES BY MONTH		
Jan	CAT	2
	COYOTE	1
	DEER	77
	EAGLE	1
	ELK	10
	FOX	2
	LION	1
	RACCOON	3
	SKUNK	2
	UNK	16
Feb	DEER	202
	EAGLE	1
	ELK	53
	FOX	1
	RABBIT	1
	SKUNK	1
	TURKEY	1
UNK	7	
March	COYOTE	1
	DEER	169
	ELK	7
	FOX	2
	RACCOON	4
	SKUNK	7
	UNK	20
April	BEAR	1
	CAT	1
	COYOTE	1
	DEER	92
	ELK	8
	FOX	1
	MOOSE	2
	OWL	1
	PRONGHORN	1
	RACCOON	1
UNK	12	

Region 3 road kill update, 2014

1/8/2015

SPECIES BY MONTH		
May	BEAR	1
	COW	1
	DEER	65
	ELK	7
	MOOSE	1
	PORCUPINE	1
	RACCOON	1
	UNK	3
June	BEAVER	1
	COYOTE	2
	DEER	68
	DOG	1
	ELK	9
	FOX	1
	PORCUPINE	2
	RACCOON	7
	SHEEP	1
	SKUNK	3
	UNK	36
	July	BEAR
BEAVER		1
BIGHORN		1
DEER		83
ELK		11
FOX		2
MARMOT		1
MOOSE		1
PRONGHORN		3
RACCOON		2
UNK	5	
Aug	BEAR	4
	BIRD	1
	COYOTE	2
	DEER	50
	ELK	8
	FOX	3
	PORCUPINE	2
	PRONGHORN	1
	RACCOON	7
	SKUNK	4
	UNK	1

SPECIES BY MONTH		
Sept	BEAR	6
	COW	1
	COYOTE	1
	DEER	59
	ELK	11
	FOX	1
	MOOSE	1
	PORCUPINE	1
	PRONGHORN	1
	RABBIT	2
Oct	RACCOON	8
	SKUNK	12
	UNK	5
	BEAR	5
	COYOTE	2
	DEER	74
	DOG	2
	ELK	12
Nov	FOX	2
	PORCUPINE	2
	RABBIT	2
	RACCOON	4
	SKUNK	3
	UNK	14
	DEER	110
Dec	DOG	1
	ELK	15
	UNK	10
	COYOTE	1
	DEER	100
	DOG	1
	ELK	24
	FOX	1
	RACCOON	7
	SKUNK	1
	UNK	5

Region 3 road kill update, 2014

1/8/2015

BY HWY	MILE MARKER	#
006A		
	20-30	8
	40-50	1
006C		
	40-50	2
006D		
	90-100	2
	110-120	1
006E		
	140-150	10
	150-160	20
	160-170	20
	170-180	14
006F		
	210-220	9
006L		
	90-100	1
006M		
	60-70	1
009C		
	80-90	9
	90-100	4
009D		
	110-120	12
	120-130	33
	130-140	61
	140-150	6
013A		
	0-10	6
	10-20	4
	20-30	6
	30-40	13
	40-50	11
	50-60	12
	60-70	13
	70-80	2
	80-90	12
	90-100	4

BY HWY	MILE MARKER	#
013B		
	90-100	54
	100-110	55
	110-120	31
	120-130	2
014A		
	10-20	1
	20-30	1
014B		
	40-50	1
024A		
	140-150	1
	150-160	2
	170-180	1
	180-190	3
	190-200	2
034A		
	10-20	2
040A		
	0-10	8
	10-20	3
	30-40	3
	40-50	3
	50-60	2
	60-70	2
	80-90	5
	90-100	23
	100-110	26
	110-120	6
	120-130	17
	130-140	27
	140-150	8
	150-160	2
	170-180	3
	180-190	10
	190-200	12
	200-210	20
	210-220	4
	220-230	2
	240-250	1

Region 3 road kill update, 2014

1/8/2015

BY HWY	MILE MARKER	#	
050A	40-50	6	
	50-60	7	
	70-80	9	
	80-90	19	
	90-100	4	
	100-110	9	
	110-120	18	
	120-130	10	
	130-140	4	
	140-150	23	
	150-160	9	
	160-170	8	
	064A	20-30	1
		30-40	1
40-50		1	
50-60		1	
60-70		4	
70-80		14	
065A	0-10	5	
	10-20	10	
	20-30	3	
	50-60	5	
070A	20-30	2	
	30-40	2	
	50-60	8	
	60-70	23	
	70-80	13	
	80-90	27	
	90-100	23	
	100-110	6	
	110-120	27	
	120-130	23	
	130-140	13	
	140-150	47	
	150-160	43	
160-170	36		
170-180	52		

BY HWY	MILE MARKER	#
070A	180-190	36
	190-200	24
	200-210	11
	210-220	8
082A	0-10	8
	10-20	25
	20-30	29
	30-40	14
	40-50	7
	70-80	2
090B	80-90	1
	90-100	6
091A	10-20	7
	20-30	9
092A	0-10	2
	10-20	7
	20-30	26
	30-40	1
	40-50	1
114A	0-10	1
	10-20	1
125A	40-50	2
	60-70	1
	70-80	2
127A	0-10	2
131B	0-10	11
	10-20	5
	20-30	6
	30-40	3
	40-50	1
	50-60	4
	60-70	2
70-80	4	

Region 3 road kill update, 2014

1/8/2015

BY HWY	MILE MARKER	#
133A	0-10	21
	10-20	28
	20-30	4
	60-70	2
	70-80	2
134A	10-20	1
135A	0-10	1
	10-20	14
	20-30	2
	140-150	1
	160-170	2
139A	20-30	1
	40-50	5
141A	110-120	3
	130-140	2
	140-150	2
141B	140-150	1
	160-170	11
149A	60-70	1
	70-80	1
	100-110	1
325A	0-10	1
330A	0-10	1
	10-20	2
340A	0-10	1
	10-20	5
347A	0-10	1
550B	120-130	71
	130-140	8

Species	hwy mp	#
BEAR		
006E	165	1
009D	117	1
013A	48.5	1
050A	123.4	1
065A	17.3	1
070A	45.6	1
	73	1
	74.5	1
	112	2
	113.5	1
	114	1
	116	1
	119	1
	169	1
	174	1
082A	2.5	2
	19.5	1
	31	1
BEAVER		
006F	213.7	1
070A	199	1
BIGHORN		
070A	117.8	1
BIRD		
134A	14.3	1

Region 3 road kill update, 2014
1/8/2015

Species	hwy mp	#
CAT		
070A		
142		1
141B		
141		1
161.5		1
COW		
014A		
6		1
050A		
80		1
COYOTE		
006F		
213.7		1
014B		
42.9		1
070A		
77		1
110		1
141.4		1
151.6		1
158		1
163		1
165		1
171.8		1
131B		
0.1		1
DEER		
006A		
15.15		1
16.6		3
006C		
40		1
41		1
006D		
92		1
94		1
105		1

Species	hwy mp	#
DEER		
006E		
142.8		2
143		1
145		1
146		2
146.5		1
147		1
147.5		1
152.8		1
153.3		1
153.6		1
153.8		2
153.9		2
154		3
155		1
157		1
157.1		1
161		2
161.3		1
162		2
165		2
165.8		1
166		1
166.5		1
168		1
169		1
146.8-158		6
147.5-151		4
006F		
210.2		1
210.5		1
211.6		1
221		1
006L		
89		1
006M		
63.4		1

Species	hwy mp	#
DEER		
009C		
81		1
82		1
82.1		1
83.4		1
84		1
85.5		2
94		1
009D		
107		1
107.2		1
109.3		2
111.6		1
112.1		1
113.9		1
114.1		1
115.1		1
115.3		2
115.4		1
117		1
117.1		1
118		1
118.9		1
119.1		1
119.2		1
119.3		3
119.4		1
120.3		2
120.8		1
123		1
123.5		1
123.8		1
124.2		1
124.4		1
124.5		1
125		5
125.3		1
125.9		1
126.2		1

Region 3 road kill update, 2014
1/8/2015

Species	hwy mp	#
DEER		
009D		
126.5		1
126.8		1
127.1		1
127.43		3
127.48		1
127.9		3
128		1
128.9		1
129		1
129.1		1
129.2		1
129.5		2
129.7		1
129.9		1
130		1
130.1		1
130.2		2
130.3		1
130.4		1
130.8		1
130.9		1
131		2
131.5		1
132.2		2
132.5		3
132.6		1
132.8		2
132.9		2
133		1
133.5		1
133.9		2
134		1
134.1		1
134.3		1
134.5		1
134.9		1
135.8		1
136		1

Species	hwy mp	#
DEER		
009D		
138		1
138.9		1
013A		
0.1		1
2.8		2
3.2		1
4		1
4.7		1
5.3		1
7		1
8.8		1
11.2		1
23.7		1
24		1
24.1		1
25		1
26		1
26.5		2
27		1
27.9		1
28.5		1
37.4		1
38.9		1
39.4		1
42.7		1
43		1
43.1		1
43.8		1
47.4		2
50.4		1
53		1
58.9		1
59		1
61.2		1
70.7		1
73.2		1
75		2
77		2

Species	hwy mp	#
DEER		
013A		
77.8		1
79.1		1
83		1
86.5		1
88.6		2
94		1
013B		
89.64		1
90		1
92.5		1
93		1
93.5		3
94		3
94.5		2
95		6
95.5		1
96		2
98		5
101.5		1
102		4
105.5		1
106		3
107		3
108		6
108.5		1
109		1
109.5		1
109.9		1
110		2
115.5		1
118		1
89.6-111		51
93-126		8
014A		
15		1
024A		
144.5		1
147.6		1

Region 3 road kill update, 2014

1/8/2015

Species	hwy mp	#
DEER		
024A		
	154	1
	173.4	1
	177.2	1
034A		
	6.3	1
	13	1
040A		
	0	1
	0.5	2
	2	1
	2.2	1
	3.8	1
	4	1
	4.8	1
	6	1
	11.9	1
	29.9	1
	38.2	1
	41.6	1
	44.1	1
	50.1	1
	61.5	1
	63.5	1
	78.1	1
	84	1
	85.5	2
	87.15	1
	88	2
	88.5	1
	89	2
	90.4	1
	92.5	1
	93	6
	93.5	1
	94	1
	95	2
	95.5	1
	95.7	1

Species	hwy mp	#
DEER		
040A		
	95.8	1
	96	1
	97	2
	97.648	2
	102	1
	113	1
	117.1	1
	119	1
	120.8	1
	126.5	1
	129	1
	129.1	2
	130.4	1
	130.9	2
	131	1
	131.9	1
	133.8	1
	143	2
	145	1
	165	2
	169.9	1
	176.1	1
	178.7	1
	180	2
	180.2	1
	180.9	1
	181.2	1
	183.2	2
	183.9	1
	186.9	1
	189.2	1
	189.5	1
	189.8	2
	189.9	1
	191.8	1
	192	1
	193.2	3
	194.5	1

Species	hwy mp	#
DEER		
040A		
	195	1
	196	2
	196.01	1
	196.75	1
	197	1
	197.5	1
	202.1	6
	203.25	1
	205	2
	209.1	1
	215	1
	217	1
050A		
	41	1
	54	1
	65	1
	74	1
	80.5	2
	82	2
	82.5	1
	83.5	1
	84	1
	90	2
	92	1
	95	1
	97	1
	101	1
	103	2
	105	1
	107.2	2
	108	1
	108.4	1
	110	1
	112	2
	113	2
	114.1	1
	114.9	1
	115	2

Region 3 road kill update, 2014
1/8/2015

Species	hwy mp	#
DEER		
050A		
120		1
133		3
134		1
135		1
136.6		1
137		1
138		2
138.1		1
139.1		1
141		2
141.7		1
143		1
146		1
147.7		1
153		1
154.3		1
157.9		1
158.1		1
159		1
160.8		1
162.2		1
162.5		2
164		1
118-127		3
135.5-165		8
141-148		7
94-135		4
064A		
29.2		1
52		1
58.1		1
64.7		1
64.9		2
65.3		6
68		1
73		7

Species	hwy mp	#
DEER		
065A		
4.3		2
5		1
7.8		1
8.9		1
9.5		2
10.3		1
11.3		1
12.5		1
14		1
15		1
16.5		1
49.8		1
49.9		1
50		1
50.04		1
53.5		1
070A		
21.5		1
29		1
45.3		1
49.6		1
50		1
54.6		4
55.1		1
56		1
56.1		1
57.9		1
58.5		2
61.5		1
62		1
62.4		1
62.5		1
62.8		1
63		1
64		1
67.15		1
68		2
70		2

Species	hwy mp	#
DEER		
070A		
71.75		1
73.1		2
75		4
77		1
79		2
79.5		2
80		2
81		1
81.5		3
82		1
82.5		1
82.6		1
83.2		1
84.5		1
84.6		2
85.5		7
86.5		1
88.9		1
89.5		1
90		1
92		1
93		1
93.5		1
93.6		1
94		2
94.1		1
94.2		1
94.3		1
94.4		1
94.5		2
95		1
96		1
97.5		1
103.8		1
104.5		1
107		1
107.7		1
108		2

Region 3 road kill update, 2014

1/8/2015

Species	hwy	#
	mp	
DEER		
070A		
108.4	1	
109	2	
110	1	
111	2	
113	1	
113.5	1	
113.7	1	
113.8	2	
114	1	
114.1	2	
115.2	1	
115.5	1	
115.8	1	
116	1	
118	1	
118.5	1	
118.7	1	
119	2	
119.5	1	
122.1	1	
122.2	1	
132	3	
133	2	
134	1	
134.4	3	
134.5	1	
135	1	
135.2	1	
136.3	1	
136.5	2	
138.8	2	
139	1	
139.5	2	
139.6	1	
139.8	1	
139.9	2	
140	3	
140.2	2	

Species	hwy	#
	mp	
DEER		
070A		
141.5	1	
141.8	1	
141.9	1	
142	2	
142.2	1	
142.5	2	
142.6	1	
142.9	2	
143	2	
144	2	
144.1	1	
144.3	1	
144.4	1	
144.5	1	
145.8	1	
146	1	
146.4	1	
146.5	7	
146.8	6	
146.9	3	
147	2	
147.3	2	
147.4	1	
147.5	1	
148	4	
148.5	1	
149.8	1	
151	1	
151.5	1	
156	1	
156.6	1	
156.8	1	
157	4	
157.7	1	
158	1	
158.7	1	
161	2	
161.7	2	

Species	hwy	#
	mp	
DEER		
070A		
162	1	
162.8	3	
163	5	
165	4	
166	1	
166.8	1	
167	2	
167.2	1	
167.5	1	
167.8	1	
168	5	
168.4	1	
168.7	1	
169	1	
170	5	
171	3	
171.1	1	
171.8	1	
172	3	
172.4	1	
172.5	1	
173	2	
173.1	1	
174	2	
174.5	1	
175	2	
175.7	1	
176	1	
176.9	1	
177	3	
178	4	
179	1	
180	2	
181	3	
181.4	1	
181.5	1	
182	4	
183	1	

Region 3 road kill update, 2014

1/8/2015

Species	hwy mp	#
DEER		
070A		
183.1		1
184		1
189		1
190		6
190.5		2
191.5		2
192		2
193		3
193.2		1
193.3		1
195		1
201.5		1
202		1
204		3
205		1
56.8-63		5
082A		
0		1
0.1		1
2		1
3		1
4.5		1
4.7		1
5		1
6.5		3
7		4
7.5		1
7.8		1
9.7		1
10		2
10.8		1
11.6		2
12		2
13		3
13.5		2
14		1
16.5		1
17.5		1

Species	hwy mp	#
DEER		
082A		
18		2
18.2		1
19		1
20		4
20.37		3
20.5		2
20.9		1
21		1
22		6
24.5		2
24.9		1
25		3
25.5		2
27.5		1
28		1
28.3		1
30		1
31		2
32.5		1
35		1
36		1
38		1
38.2		1
65		2
090B		
86		2
88		1
88.5		3
091A		
5		2
9.8		2
13		1
15		2
16		1
13.8-18.6		5
092A		
0.1		1
5.5		1

Species	hwy mp	#
DEER		
092A		
6		1
10		2
16		3
17		1
17.4		1
18		2
19		6
19.4		1
19.5		1
20		2
21		1
22.5		1
24.7		1
28.7		1
114A		
4		1
127A		
0.3		1
131B		
0.053		1
1		2
2		2
4		1
6.5		1
11.3		1
15		1
22		2
30		1
0-22		4
3-19		3
133A		
1		2
2		3
3		2
4		4
5		7
6		3
9		2

Region 3 road kill update, 2014

1/8/2015

Species	hwy mp	#
DEER		
133A		
	10	2
	12	2
	15	2
	18	1
	66.3	1
	0-16	3
135A		
	6.5	1
	9	1
	11	3
	11.7	1
	13	1
	13.9	1
	14	1
	19	1
	20	1
	161	1
139A		
	22	1
	39.2	5
141A		
	111.3	1
	111.5	1
	114.2	1
149A		
	57.5	1
	69	1
	99.5	1
330A		
	0.1	1
	5	1
	6.02	1
340A		
	3.5	1
	7.5	1
	8	2
	9.5	1

Species	hwy mp	#
DEER		
347A		
	0.1	1
550B		
	118	7
	119	3
	119.5	1
	120	6
	122	10
	123	3
	123.7	1
	124	3
	124.5	5
	125	2
	126	2
	126.1	1
	127	1
	118-125	8
	118-127	14
	119-124	8
DOG		
070A		
	134	1
	137.4	1
	139.5	1
	146.8	1
	159	1
EAGLE		
064A		
	42.1	1
070A		
	146	1
ELK		
006E		
	155	1
	156.5	1
006F		
	213.9	1
	214.1	2

Species	hwy mp	#
ELK		
009C		
	81.5	1
009D		
	107.8	1
	110.1	1
	112	1
	124.5	1
	137.5	1
	127.7-133.5	5
013A		
	17.4	1
	17.5	1
	26.2	1
	27.5	2
	33.6	1
	50.5	1
	53.6	1
	54	1
	57.6	1
	60	3
	60.6	1
	60.7	1
	61	1
	61.5	1
	61.6	1
	62.8	1
	76	5
	18.8-64	3
013B		
	89.64	16
	94	1
	96.35	1
	98.5	3
	102	1
	102.5	1
	106	1
	107.2	1
	107.8	1
	107.9	1

Region 3 road kill update, 2014

1/8/2015

Species	hwy mp	#
ELK		
013B		
	108.2	3
	108.5	1
024A		
	183	1
	184.7	1
	185	1
	188	1
040A		
	31.3	1
	75.8	1
	93	5
	95.6	1
	98.2	1
	98.3	1
	98.4	1
	98.8	1
	101.5	1
	111.3	1
	112.8	1
	113.6	1
	113.8	1
	115	1
	119	1
	120.5	1
	120.7	1
	121.3	1
	124.2	1
	125	1
	129.3	1
	133.9	1
	136.5	1
	140	1
	149	1
	209	1
050A		
	47	1
	101	1
	110	1

Species	hwy mp	#
ELK		
050A		
	144	1
	146	1
070A		
	62.5	1
	64	2
	64.2	1
	64.5	1
	67	1
	68	2
	79	4
	111.8	1
	113	1
	115.3	1
	133	1
	135	1
	136	1
	170	1
	170.8	1
	171.05	1
	172	1
	177.3	1
	177.8	1
	178	1
	179	1
	181.5	1
	184.5	1
	191	1
	192	1
	192.5	1
	193	2
	208	2
	208.2	1
082A		
	21	1
	24	1
	33	1
	35.5	2
	37.15	1

Species	hwy mp	#
ELK		
091A		
	11.7	1
	21	1
114A		
	7.2	1
125A		
	40.4	1
	71.2	1
127A		
	1	1
133A		
	2	1
	13	1
	15	1
135A		
	7	2
	10	1
	14	1
	14.9	1
	137.8	1
	161	1
141A		
	125.6	1
	129.2	1
	136.5	1
	138.5	1
FOX		
006E		
	150	1
	162	1
009C		
	83.5	1
	93	1
040A		
	97.648	1
	197	2
070A		
	137	1
	142	1

Region 3 road kill update, 2014

1/8/2015

Species	hwy mp	#
FOX		
070A		
152		1
160		2
161.5		1
175		1
092A		
10		1
131B		
48		1
LION		
070A		
159.6		1
MARMOT		
006F		
223.5		1
MOOSE		
009D		
107.5		1
040A		
239		1
070A		
110.8		1
204.3		1
125A		
35.2		1
OWL		
070A		
163.8		1
PORCUPINE		
006F		
221		1
009C		
84.2		1
84.8		1
040A		
113		1
120.1		1
144		1

Species	hwy mp	#
PORCUPINE		
070A		
142		1
092A		
17		1
PRONGHORN		
040A		
50.1		1
78.5		1
84		1
064A		
16.5		1
125A		
59.2		1
66		1
RABBIT		
006E		
159		2
131B		
15		1
133A		
6		2
RACCOON		
006E		
166.8		1
040A		
97.648		1
98		1
98.5		1
99		1
100.8		1
104		1
104.4		1
117		1
122		1
124.2		1
132.5		1
203		1

Species	hwy mp	#
RACCOON		
050A		
53		1
070A		
96		1
107		1
116		1
117.4		1
118.4		1
120		1
122.5		1
123		1
124.8		1
146		1
151.2		2
166		1
177		1
092A		
5.5		1
15		1
131B		
21.93		1
25		1
32.5		1
42.5		1
56.4		1
57.9		1
65.5		1
66		1
67.5		1
68.7		1
133A		
5		3
325A		
4		1
SHEEP		
082A		
75.6		1

Region 3 road kill update, 2014

1/8/2015

Species	hwy mp	#
SKUNK		
006E		
165		5
040A		
97.648		1
117.5		1
121		1
122		1
124.2		1
127.5		1
128.4		1
134.6		1
135		1
135.5		1
136.8		1
050A		
52		2
74		2
82		3
83		2
092A		
21		3
36		1
131B		
1		1
133A		
2		1
7		2
TURKEY		
070A		
129		1
UNK		
006A		
44		1
15.2-25.5		4
006E		
162		3
159-163		4

Species	hwy mp	#
UNK		
006F		
211		1
215		2
009D		
116		1
118.1		1
119.1		1
119.7		1
123		1
123.1		1
127.7		1
135.5		1
013A		
34		1
40.4		1
40.8		1
40.9		1
46		1
47.4		3
040A		
14		1
28.9		1
128		1
197		2
197.25		1
128-138		9
050A		
42		4
43		1
52		2
69		1
78		1
83		5
94.2		1
95		1
108.4		1
114.8		1

Species	hwy mp	#
UNK		
050A		
114.8		1
115.5		3
74-80		4
065A		
1		2
1.2		1
7		1
070A		
19		1
27		1
150		1
151.7		1
153		1
156		1
160.2		1
161		1
163		1
164		1
166		2
170		1
179		1
194		1
201		1
204		1
204.5		1
205		1
208		2
211.2		1
082A		
12		1
091A		
10		1
092A		
0.1		1
10		1
21		1

Region 3 road kill update, 2014
1/8/2015

Species	hwy	mp	#
UNK			
131B			
53			3
133A			
3			2
6			1
9			1
10			2
62			2
67			1
0-9			3
135A			
1.5			1
141B			
159			1
159.3			1
160			1
161			1
162			6
340A			
5			1
550B			
118			2
125			1
126.2			1

Patrols Reporting		
2329	3603	3242
3201	3604	3243
3202	3605	3244
3203	3608	3245
3204	3612	3246
3205	3613	3247
3206	3614	3248
3207	3619	3249
3208	3621	3250
3209	3623	3251
3210	3627	3252
3211	3633	3253
3212	3636	3254
3214	3637	3255
3215	32310	3256
3216	3201	3604
3217	3203	3605
3218	3204	3608
3219	3207	3612
3220	3208	3613
3221	3209	3619
3222	3211	3621
3223	3212	3622
3225	3214	3623
3226	3216	3627
3227	3217	3633
3228	3218	3634
3229	3219	3636
3230	3220	3637
3232	3221	3639
3233	3222	
3240	3223	
3241	3225	
3242	3226	
3243	3227	
3244	3228	
3245	3229	
3246	3230	
3247	3231	
3251	3232	
3252	3233	
3553	3240	

Region 4 road kill update, 2014

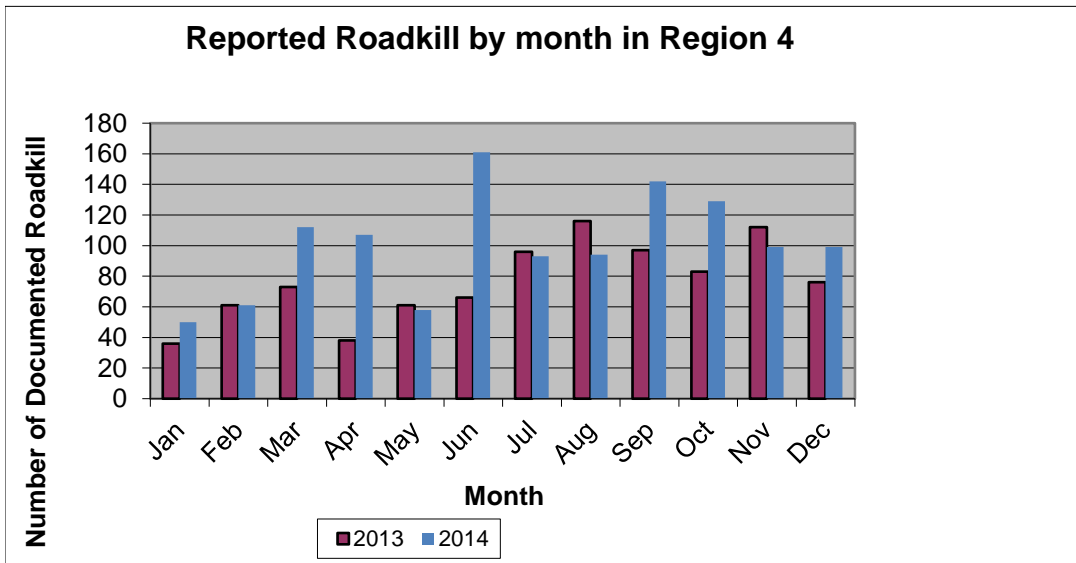
1/9/2015

Totals from CDOT personnel

Total number of reported animals killed 1205

Note: Regional boundaries were reconfigured in 2013

BY MONTH	2013	2014
Jan	36	50
Feb	61	61
Mar	73	112
Apr	38	107
May	61	58
Jun	66	161
Jul	96	93
Aug	116	94
Sep	97	142
Oct	83	129
Nov	112	99
Dec	76	99
Total	915	1205



Region 4 road kill update, 2014

1/9/2015

2014 BY SPECIES	
BADGER	23
BEAVER	1
BIRD	6
BOBCAT	1
CAT	63
CHICKEN	1
COW	1
COYOTE	45
DEER	322
DOG	17
DUCK	1
ELK	11
FOX	44
GOOSE	4
HAWK	8
HOG	1
MOOSE	1
OPOSSUM	8
OPPOSUM	2
OWL	6
PEACOCK	1
PHEASANT	28
PORCUPINE	2
PRAIRIE DOC	57
PRONGHORN	4
RABBIT	208
RACCOON	160
SKUNK	41
SNAKE	5
SQUIRREL	3
TURKEY	5
TURTLE	3
UNK	122

Species by Month	
Jan	
CAT	1
COW	1
COYOTE	3
DEER	19
DOG	4
ELK	1
FOX	1
HAWK	1
MOOSE	1
OWL	1
PHEASANT	1
RABBIT	6
RACCOON	3
SKUNK	1
UNK	6
Feb	
CAT	5
COYOTE	2
DEER	15
FOX	1
PHEASANT	1
PORCUPINE	1
RABBIT	14
RACCOON	8
SKUNK	2
UNK	12
Mar	
BADGER	2
BEAVER	1
BIRD	1
CAT	7
CHICKEN	1
COYOTE	11
DEER	19
DOG	3
FOX	4
GOOSE	2
HAWK	1
OPPOSUM	2
OWL	1
PHEASANT	3
RABBIT	35
RACCOON	9
SKUNK	7
UNK	3

Region 4 road kill update, 2014

1/9/2015

SPECIES BY MONTH	
April	
BADGER	1
CAT	15
COYOTE	4
DEER	14
DOG	2
ELK	3
FOX	4
GOOSE	1
HAWK	1
OPOSSUM	2
OWL	1
PHEASANT	1
PRONGHORN	1
RABBIT	45
RACCOON	9
SKUNK	1
TURKEY	2
May	
BADGER	3
CAT	4
COYOTE	3
DEER	20
ELK	2
OPOSSUM	2
PHEASANT	1
PRAIRIE DOG	1
RABBIT	7
RACCOON	9
SNAKE	1
SQUIRREL	1
UNK	4
June	
BADGER	2
BIRD	3
CAT	5
COYOTE	2
DEER	30
DOG	3
DUCK	1
FOX	2
HAWK	1
OPOSSUM	2
PEACOCK	1
PHEASANT	1
PORCUPINE	1
PRAIRIE DOG	56

SPECIES BY MONTH	
June (cont)	
PRONGHORN	1
RABBIT	10
RACCOON	16
SKUNK	2
SQUIRREL	1
TURKEY	2
TURTLE	1
UNK	18
July	
BADGER	3
BOBCAT	1
CAT	3
COYOTE	3
DEER	23
DOG	3
FOX	6
HOG	1
OPOSSUM	2
OWL	2
PHEASANT	4
PRONGHORN	1
RABBIT	13
RACCOON	21
SKUNK	4
UNK	3
Aug	
BADGER	6
CAT	3
COYOTE	3
DEER	13
ELK	2
FOX	4
HAWK	1
PHEASANT	5
RABBIT	11
RACCOON	23
SKUNK	5
SNAKE	1
UNK	17

Region 4 road kill update, 2014
1/9/2015

SPECIES BY MONTH	
Sept	
BADGER	2
CAT	1
COYOTE	1
DEER	24
ELK	2
FOX	10
HAWK	1
OWL	1
PHEASANT	3
PRONGHORN	1
RABBIT	19
RACCOON	26
SKUNK	9
SNAKE	2
TURTLE	2
UNK	38
Oct	
BADGER	2
CAT	2
COYOTE	7
DEER	48
DOG	1
ELK	1
FOX	7
HAWK	2
PHEASANT	6
RABBIT	18
RACCOON	23
SKUNK	5
SNAKE	1
TURKEY	1
UNK	5
Nov	
CAT	5
COYOTE	3
DEER	60
FOX	5
PHEASANT	1
RABBIT	11
RACCOON	9
SKUNK	5

SPECIES BY MONTH	
Dec	
BADGER	2
BIRD	2
CAT	12
COYOTE	3
DEER	37
DOG	1
GOOSE	1
PHEASANT	1
RABBIT	19
RACCOON	4
SQUIRREL	1
UNK	16

BY HWY	MP	#
001A		
	0-10	1
	10-20	4
006J		
	400-410	1
	410-420	4
	420-430	11
	430-440	3
	440-450	3
	450-460	4
	460-470	2
007A		
	20-30	2
	30-40	3
014B		
	60-70	3
	70-80	1
	80-90	2
	100-110	1
	110-120	2
014C		
	140-150	7
	180-190	6
	230-240	1
024G		
	360-370	3

Region 4 road kill update, 2014
1/9/2015

BY HWY	MP	#
025A		
	240-250	6
	250-260	1
	260-270	3
	270-280	7
	280-290	28
	290-300	5
	300-310	8
034A		
	70-80	1
	80-90	5
	90-100	1
	100-110	11
	110-120	2
	120-130	22
	140-150	3
034B		
	170-180	5
	180-190	22
	190-200	2
	200-210	10
	210-220	15
	220-230	10
	230-240	8
	240-250	6
	250-260	39
	260-270	13
034D		
	0-10	3
	10-20	1
036B		
	10-20	10
	20-30	26
	30-40	12
	40-50	4
	50-60	2
036D		
	140-150	1
	150-160	1
	170-180	1
	180-190	16
	190-200	10
	200-210	15

BY HWY	MP	#
036D		
	210-220	14
	220-230	25
	300-310	1
039A		
	10-20	4
040H		
	400-410	1
	420-430	1
	430-440	10
	440-450	4
	450-460	1
	460-470	3
	470-480	6
	480-490	7
	490-500	2
042A		
	0-10	1
052A		
	0-10	10
	10-20	10
	20-30	3
	30-40	2
	60-70	4
	70-80	3
052B		
	90-100	6
	100-110	11
055A		
	0-10	1
059A		
	10-20	1
	60-70	17
	70-80	5
059B		
	70-80	3
	80-90	7
	90-100	2
	100-110	2
	110-120	10
	120-130	9
	130-140	9
	140-150	6
	150-160	6
	160-170	3
	170-180	3

Region 4 road kill update, 2014
1/9/2015

BY HWY	MP	#
059B		
	210-220	2
	220-230	2
	230-240	1
061A		
	0-10	5
	10-20	10
	20-30	13
063A		
	0-10	1
	10-20	2
	20-30	10
	30-40	5
	40-50	1
	50-60	10
066B		
	30-40	25
	40-50	6
	50-60	2
070A		
	370-380	3
	380-390	3
	390-400	2
	400-410	2
071D		
	110-120	1
	140-150	2
	170-180	5
076A		
	30-40	24
	40-50	14
	50-60	3
	60-70	2
	70-80	13
	80-90	27
	90-100	12
	100-110	23
	110-120	4
	150-160	13
	160-170	8
	170-180	2
	180-190	1

BY HWY	MP	#
085C		
	240-250	9
	250-260	10
	260-270	1
085L		
	260-270	7
	270-280	5
	280-290	5
	290-300	5
	300-310	1
093A		
	10-20	1
113A		
	0-10	2
119A		
	30-40	2
	40-50	1
119B		
	50-60	38
138A		
	0-10	2
	10-20	4
	20-30	4
	40-50	2
144A		
	10-20	1
	20-30	9
	30-40	6
257A		
	0-10	4
	10-20	31
	20-30	5
287C		
	310-320	1
	330-340	1
	350-360	2
	360-370	13
	370-380	19
	380-390	11
	390-400	3
385B		
	140-150	13
	150-160	5
	160-170	3

Region 4 road kill update, 2014
1/9/2015

BY HWY	MP	#
385C		
	140-150	1
	150-160	5
	160-170	12
	200-210	1
	210-220	33
	220-230	6
385D		
	220-230	6
	230-240	9
	240-250	9
	250-260	14
	260-270	3
	270-280	4
	280-290	1
	290-300	1
	310-320	1
392B		
	110-120	1
	120-130	1

Species	hwy	mp	#
BADGER			
006J			
	422.8		1
	456		1
025A			
	286		1
034B			
	243.7		1
036D			
	192		1
	198.4		1
	215.7		1
059A			
	63.2		1
059B			
	78.2		1
	111.8		1
	144.5		1

Species	hwy	mp	#
BADGER			
061A			
	5		1
	10		1
063A			
	18		1
076A			
	68.3		1
	74.5		1
	77.9		1
	79		1
	98.1		1
385B			
	139.5		1
385C			
	158.6		1
385D			
	273.9		1
	292		1
BEAVER			
085C			
	263.8		1
BIRD			
036D			
	181		1
	222.1		1
085C			
	250.5		1
138A			
	38.4		1
385C			
	207.8		1
	214.8		1
BOBCAT			
287C			
	365		1
CAT			
025A			
	279.5		1
	281		1

Species	hwy	mp	#
CAT			
034A			
	104.6		1
034B			
	168		1
	181		3
	192		1
	200		1
	209.8		1
	218.2		1
	223.6		1
	247.4		1
036D			
	188.1		1
	205.8		1
	207.9		1
	209		1
	209.4		1
	211		1
	220.5		1
040H			
	480.2		1
052A			
	11.17		5
052B			
	88.6		1
059A			
	60.3		1
	65.1		1
059B			
	79.5		1
	100		1
	108.1		1
	223.8		1
061A			
	0.1		1
	5		1
	10		1
	15		2
	19		1
063A			
	48.2		2

Region 4 road kill update, 2014
1/9/2015

Species	hwy mp	#
CAT		
076A		
25		1
28		1
73.1		1
75		2
76.5		1
77.3		1
80		1
93		1
93.7		1
085C		
236.035		3
144A		
20		1
27.2		1
385B		
159.4		1
385D		
220.2		1
237.2		1
241		1
245		1
392B		
105.439		1
115		1
CHICKEN		
385C		
207.509		1
COW		
036B		
40.2		1
COYOTE		
006J		
418		1
452.6		1
025A		
292.5		1

Species	hwy mp	#
COYOTE		
034B		
181		1
209.8		1
214.3		1
230.4		1
232.6		1
034D		
6		1
036B		
46.9		1
036D		
185.8		1
222.3		1
222.8		1
223		1
040H		
427		1
432.6		1
052A		
6		1
059A		
62.3		1
62.4		1
62.7		1
059B		
145		1
061A		
21.7		1
21.7		1
063A		
48		1
066B		
33.8		1
076A		
41.8		1
48		1
69		1
84		1
95.1		1
95.4		1

Species	hwy mp	#
COYOTE		
076A		
96.1		1
96.5		1
98.1		1
99.9		2
105		1
152		1
160.4		1
174		1
257A		
15.85		1
385B		
141.9		1
385C		
212.7		1
385D		
234		1
247.5		1
DEER		
006J		
415.7		1
007A		
19.8		1
24.8		1
30		1
31		1
014B		
64.8		3
80.4		1
95.9		1
114		1
014C		
138		1
176		1
233.9		1
024G		
355.8		1
360.1		1
361.2		1

Region 4 road kill update, 2014
1/9/2015

Species	hwy mp	#
DEER		
025A		
238		2
239		1
240		2
241.5		1
247		1
255		1
256.5		1
257		1
265		1
266		1
271.4		1
274.3		1
276		1
277.8		1
277.88		1
279.47		1
279.5		1
280		1
281		4
281.25		3
282		5
283.3		1
286		2
295		2
296		1
297		1
034A		
72		1
80.2		1
80.9		1
81		3
86.2		1
102		1
140		1
140.2		1
143.9		1
034B		
170		2
204		1
227.38		1
234.1		1
245.3		1

Species	hwy mp	#
DEER		
034B		
245.7		1
246		1
246.5		1
246.6		1
247		1
247.2		1
247.5		2
247.8		1
247.9		1
248		1
248.2		1
248.5		3
248.7		1
249.7		1
251		1
251.5		2
251.6		1
251.7		1
252		1
252.2		1
252.3		1
253.2		1
255.8		1
256.5		1
256.8		1
257		1
257.4		1
257.5		1
258		1
258.5		1
259		1
259.5		1
034D		
1.17		1
036B		
5.5		1
6		1
8.4		1
9.5		1
11.8		1
12		2
12.4		1

Species	hwy mp	#
DEER		
036B		
13		1
14.5		1
15.3		1
15.4		1
15.7		1
19.9		1
20		2
21.1		1
21.4		1
24.5		1
25.8		1
26		1
27		1
27.5		2
27.9		1
29		3
29.2		1
29.95		1
38.2		1
39.5		1
036D		
145.7		1
177		1
177.2		2
183.4		1
202.1		1
205.9		1
210.6		1
216.8		1
040H		
399.5		1
416.4		1
427.09		1
430		1
430.4		1
431		1
431.5		1
431.6		1
432		1
433.9		1
437.3		1
443.8		1

Region 4 road kill update, 2014
1/9/2015

Species	hwy mp	#
DEER		
052A		
6.3	1	
63	1	
052B		
87.116	1	
87.5	1	
88.8	1	
100	2	
100.5	1	
101	1	
104	1	
059B		
141.7	1	
155.7	1	
061A		
10	1	
22	1	
063A		
18.001	1	
066B		
29	1	
45.5	1	
50.8	1	
070A		
372	1	
378	1	
391	1	
393	1	
398	1	
398.5	1	
071D		
113	1	
166	1	
172.5	1	
076A		
31	1	
32.3	2	
34	2	
36	2	
53.2	1	
56.1	1	
57.2	1	

Species	hwy mp	#
DEER		
076A		
67	1	
67.7	4	
73	1	
75.1	1	
82.5	1	
83	1	
85.7	1	
89.5	1	
91.5	1	
92.2	1	
92.5	1	
95.2	1	
96.4	1	
97	1	
98	1	
104.1	1	
106.5	1	
108	1	
149.5	1	
150.5	1	
156.2	1	
159.6	1	
160	2	
164.8	1	
168	1	
181.9	1	
085C		
250.4	1	
085L		
304	1	
093A		
14.1	1	
113A		
1	1	
3.4	1	
119A		
29.5	1	
35.2	1	

Species	hwy mp	#
DEER		
138A		
2.3	1	
4	1	
5.9	1	
6.4	2	
7	1	
15.2	1	
17	1	
19.8	1	
42	1	
144A		
25	1	
26.2	1	
257A		
2	1	
6.1	1	
9	1	
16.4	1	
287C		
310.9	1	
349	1	
356	1	
359	1	
360.3	1	
360.9	1	
361	1	
362.3	1	
362.9	1	
363	1	
364	4	
365	1	
366.4	1	
366.5	1	
366.8	3	
366.9	1	
367	5	
367.2	1	
371	1	
372	1	
372.5	1	
373.9	1	
380	4	

Region 4 road kill update, 2014
1/9/2015

Species	hwy mp	#
DEER		
287C		
381.2		1
382		1
383		1
383.9		1
384		1
385		3
385C		
144.6		1
207.809		1
210.2		1
210.6		3
210.7		1
210.9		1
211		1
385D		
223		2
223.8		1
228		1
231.8		1
233.5		1
240.5		1
241.9		1
243.8		1
244.5		1
245		1
245.2		1
248.6		1
249		1
253		1
264.4		1
309.5		1
DOG		
006J		
400		1
025A		
271.41		1
034B		
168.5		1

Species	hwy mp	#
DOG		
036D		
207.3		1
209.7		1
224.7		1
052A		
67.2		2
059A		
60.3		1
076A		
46		1
75.6		1
78.5		1
79		1
79.1		1
82.5		1
83		1
085C		
240		1
DUCK		
144A		
17.5		1
ELK		
036B		
23		2
24.4		1
24.5		2
070A		
365		1
119A		
27.5		1
287C		
331		1
358		1
372		1
384.8		1

Species	hwy mp	#
FOX		
025A		
283		1
295.5		1
295.8		1
034B		
181		1
184.6		1
191		1
200		2
209.8		1
210		1
036D		
197.5		1
216.2		1
216.8		1
221.1		1
221.5		1
040H		
460.7		1
462.6		1
471.9		1
474.6		1
486.6		1
059A		
11.9		1
059B		
129.6		1
063A		
0.1		1
30.25		1
066B		
36.2		1
076A		
30		1
92		1
92.5		1
385B		
135.7		1
136.1		1
136.4		1

Region 4 road kill update, 2014
1/9/2015

Species	hwy mp	#
FOX		
385B		
139.3		1
140.2		1
140.8		1
141.9		1
146.5		1
147.3		1
385C		
154.4		1
157		1
157.8		1
160.4		1
162.1		1
162.8		1
211.7		1
GOOSE		
006J		
437.5		1
052A		
29		1
076A		
85		1
163		1
HAWK		
034B		
216.3		1
036D		
174.6		1
193.2		1
198.5		1
059B		
165.9		1
213.5		1
076A		
99		1
385C		
215.7		1

Species	hwy mp	#
HOG		
385B		
146.4		1
MOOSE		
014B		
73		1
OPOSSUM		
034B		
209.8		1
061A		
21.7		1
063A		
18		1
18.1		1
30		1
076A		
81.3		1
144A		
26		1
26.8		1
385C		
210.4		1
211.3		1
OWL		
034B		
197.8		1
059A		
65.2		1
076A		
77		1
152.6		1
385C		
207.5		1
208.1		1
PEACOCK		
076A		
32		1

Species	hwy mp	#
PHEASANT		
006J		
425		1
439.1		1
443		1
445.3		1
449.3		1
034B		
235		1
036D		
180.3		1
189.8		1
206.4		1
221.6		1
223		1
223.5		1
040H		
466		1
475.9		1
483.9		1
059A		
60.333		1
62.7		1
63.4		1
059B		
119		1
123		1
128		1
137.7		1
143.9		1
153.5		1
144A		
20.2		1
385C		
207.5		1
211.6		1
385D		
249		1

Region 4 road kill update, 2014
1/9/2015

Species	hwy mp	#
PORCUPINE		
076A		
69		1
385C		
216.8		1
PRAIRIE DOG		
034A		
103		4
036B		
21.77		11
052A		
4.7		10
076A		
40		4
119B		
45		24
257A		
8		3
287C		
347.18		1
PRONGHORN		
025A		
297.5		1
059A		
55.2		1
063A		
20		1
287C		
376.3		1
RABBIT		
006J		
407.9		1
413.3		1
414		1
414.6		1
415.3		1
416.7		1
417.8		1
417.9		1
418.9		1

Species	hwy mp	#
RABBIT		
006J		
421		1
422.2		1
426.8		1
430		1
446.7		1
464.5		1
034A		
96.5		2
98.5-10		9
034B		
181		9
182		3
182.3		1
182.5		1
201		2
204		1
204.4		1
207		1
209.1		1
209.8		3
210.2		1
210.4		1
214		1
221.5		1
222		3
226.4		1
227		1
232.3		1
232.8		1
235.3		1
242.1		1
243		1
246		1
246.2		1
251		1
254.6		1
256		1

Species	hwy mp	#
RABBIT		
036D		
178		3
181.6		1
184.3		1
184.9		1
188.5		1
191.3		1
192		1
197.3		1
199.2		1
199.3		1
200.1		1
203.6		1
204.3		1
204.5		1
205.3		1
210.3		1
220		2
223		1
224		2
040H		
465.2		1
471.5		1
477.3		1
052A		
72		1
052B		
94		1
95.1		1
97.8		1
101.1		1
103		1
104.3		1
055A		
1.75		1
059A		
63.3		2
63.4		2

Region 4 road kill update, 2014
1/9/2015

Species	hwy mp	#
RABBIT		
059A		
	64.5	2
	65.8	1
	66.3	1
	67.1	1
059B		
	74.474	2
	77.9	2
	82.6	1
	84.5	1
	91.4	1
	92.5	1
	106.2	1
	112.6	1
	114.3	1
	116.1	1
	116.8	1
	121.8	1
	123.4	1
	126	1
	126.4	1
	130.6	1
	132.7	1
	143.5	2
	145.9	1
	153.4	1
	156.1	1
	165.2	1
	165.4	1
	211.4	1
	222.3	1
	233.4	1
061A		
	0.1	1
	0.2	2
	3	1
	8	2
	10	2
	15	1
	20	1
	21.7	1

Species	hwy mp	#
RABBIT		
063A		
	9	1
	18	2
	18.1	2
	30	1
	48.2	6
	18-48.2	4
071D		
	174.4	3
076A		
	40	2
	92	1
	97	1
	98.5	1
	99	1
	102	2
	103.2	1
	106.4	1
	147.2	1
	164.2	1
144A		
	20.4	1
385B		
	138	1
	141.9	2
385C		
	151	1
	154	1
	162.7	1
	201.7	1
	207.8	1
	208.8	1
	208.9	1
	209.2	1
	215.8	1
	216.7	1
385D		
	220	1
	220.5	1
	237.8	1
	245.8	1

Species	hwy mp	#
RABBIT		
385D		
	247.3	1
	247.5	1
	250.1	1
	260.5	1
	260.9	1
	265	2
	266	1
RACCOON		
001A		
	1	1
	6	3
007A		
	32.6	1
014C		
	139.5	1
025A		
	274	1
	275	2
	277.8	1
	278.2	1
	284.8	1
	288	1
034A		
	100	1
	104.78	1
	105.91	1
	107	1
	142.6	1
034B		
	200	1
	206.8	1
	218.5	1
	223.4	1
	245	2
	251.5	1
	253.5	1
	257.4	1
	258.7	1
034D		
	1.3	1
	2	1

Region 4 road kill update, 2014
1/9/2015

Species	hwy mp	#
RACCOON		
036B		
22.6		1
34		1
036D		
178.049		1
178.7		1
180		1
195.2		1
198		2
198.6		1
210.3		1
218.3		1
221.8		1
223.5		1
039A		
6.8		4
040H		
437		2
473.9		1
480.6		1
042A		
3.5		1
052B		
94.6		1
103		1
059B		
112.4		2
148		1
162		1
061A		
5		1
20		2
063A		
18.001		1
48.2		1
066B		
29		1
30.7		1
31		3
31.1		1
31.4		1

Species	hwy mp	#
RACCOON		
066B		
31.5		3
31.6		1
32.2		1
32.4		1
32.5		1
33.6		1
34		2
34.3		1
34.5		1
36.2		1
36.3		1
076A		
25.1		1
28		1
32.3		2
69		1
71.5		1
78		3
83.1		1
83.2		1
96.3		1
103.6		1
25-48		5
085C		
245		4
119B		
48		3
50.7		2
51		2
51.6		1
52.9		2
54.4		4
138A		
23		1
144A		
12.3		1
15		1
16.5		1
17.5		1
22.5		1
25		1

Species	hwy mp	#
RACCOON		
257A		
0.5		1
0.75		2
8		8
8.85		1
14		2
15		1
17		1
18		1
385B		
155.3		1
385C		
153.2		1
156.9		1
159.5		1
207.5		1
208.6		1
209.7		1
210.3		1
210.5		1
210.7		1
215.1		1
385D		
231		2
247.1		1
250.1		1
284.4		1
SKUNK		
001A		
5		1
014B		
109		1
025A		
296.15		1
034A		
104		1
034B		
181		2
241.3		1
247.3		2
247.4		1

Region 4 road kill update, 2014
1/9/2015

Species	hwy mp	#
SKUNK		
036D		
	193.3	1
	207.7	1
	224.7	2
	298.3	1
040H		
	451	1
	476.8	1
	486	1
052A		
	60	1
	62	1
059B		
	74.474	1
	102.8	1
	106	1
	110.9	1
	119.8	1
	127	2
	128	1
061A		
	21.7	1
071D		
	138	2
076A		
	94.3	1
144A		
	15.6	1
385B		
	146.2	1
	147.8	1
	155.3	1
385C		
	209.2	1
	211.4	1
385D		
	227.3	1
	230.7	1
	240	1

Species	hwy mp	#
SNAKE		
040H		
	480.6	1
076A		
	81.2	1
385B		
	143.2	1
385C		
	151.2	1
385D		
	226	1
SQUIRREL		
006J		
	424.8	1
059B		
	109.2	1
	146.1	1
TURKEY		
059B		
	78.1	1
076A		
	79.5	1
	81.2	1
385C		
	207.9	1
385D		
	244	1
TURTLE		
036D		
	186.5	1
040H		
	459.9	1
076A		
	100	1
UNK		
014B		
	84.5	1
014C		
	140.2-176.6	10

Species	hwy mp	#
UNK		
025A		
	270	1
	276.4	1
034A		
	103.8	1
	112-134	11
034B		
	168.5	1
	216	1
036B		
	39.2	1
	48.035	1
036D		
	135.5	1
	178	1
052A		
	29.083	1
	60	1
	11.2-29	6
059A		
	61.8	1
059B		
	115	2
066B		
	32	3
	33	1
	47-51	3
070A		
	374.5	1
	375.7	1
	381	1
076A		
	145.1	1
	152.5	1
	145-165	6
	25.1-48	6
	25-48	5

Region 4 road kill update, 2014

1/9/2015

Species	hwy	mp	#
UNK			
085C			
	236-250.6		5
	254-261		4
085L			
	265.9-270.4		7
	270.5-309.5		15
257A			
	11		1
	12		1
	14		1
	10-14		3
	5-18.5		9
385C			
	160		3
	207.509		1
	216		1

PATROLS REPORTING	
4101	4141
4102	4142
4103	4143
4104	4145
4105	4146
4107	4153
4108	4101
4109	4102
4110	4103
4112	4105
4113	4108
4114	4110
4115	4112
4116	4113
4117	4114
4118	4115
4120	4116
4121	4117
4122	4118
4123	4120
4124	4121
4125	4123
4126	4124
4127	4126
4130	4131
4131	4135
4132	4136
4133	4137
4134	4138
4135	4139
4136	4140
4137	4143
4138	4145
4139	4146
4140	4153

Region 5 road kill update, 2014

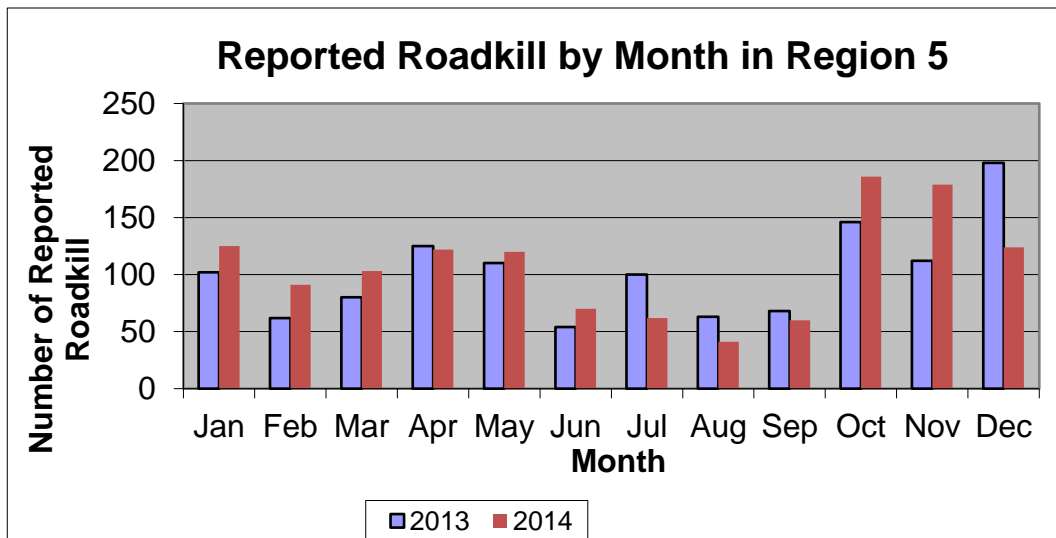
1/12/2015

Totals from CDOT personnel

Total number of reported animals killed 1283

Note: Regional boundaries were reconfigured in 2013

BY MONTH	2013	2014
Jan	102	125
Feb	62	91
Mar	80	103
Apr	125	122
May	110	120
Jun	54	70
Jul	100	62
Aug	63	41
Sep	68	60
Oct	146	186
Nov	112	179
Dec	198	124
Total	1220	1283



Region 5 road kill update, 2014

1/12/2015

2014 BY SPECIES						
BADGER	1		DEER	1078	PRONGHORN	3
BEAR	2		DOG	4	RABBIT	10
BEAVER	1		ELK	69	RACCOON	13
BIRD	3		FOX	2	SHEEP	1
BOBCAT	1		HORSE	7	SKUNK	19
CAT	4		OWL	1	SNAKE	1
COW	5		PORCUPINE	1	TURKEY	1
COYOTE	1		PRAIRIE DOG	3	UNK	52

SPECIES BY MONTH		
JAN	DEER	122
	ELK	3
FEB	DEER	70
	ELK	11
	FOX	1
	RABBIT	2
	SKUNK	6
	UNK	1
MAR	CAT	2
	COW	1
	DEER	74
	ELK	13
	PRAIRIE DOG	2
	RABBIT	5
	SKUNK	3
	SNAKE	1
	TURKEY	1
UNK	1	
APRIL	BOBCAT	1
	CAT	1
	DEER	111
	ELK	3
	PRAIRIE DOG	1
	PRONGHORN	1
	RABBIT	2
	RACCOON	1
SKUNK	1	
MAY	DEER	96
	ELK	8
	PRONGHORN	1
	RACCOON	2
	UNK	13

SPECIES BY MONTH		
JUNE	BIRD	3
	CAT	1
	COW	2
	DEER	46
	ELK	11
	SKUNK	2
UNK	5	
JULY	BEAR	1
	DEER	46
	DOG	1
	ELK	3
	PRONGHORN	1
	RABBIT	1
	RACCOON	2
SKUNK	1	
UNK	6	
AUG	BEAR	1
	BEAVER	1
	COW	1
	DEER	27
	ELK	2
	RACCOON	2
	SHEEP	1
	SKUNK	2
UNK	4	
SEPT	DEER	45
	DOG	1
	ELK	8
	FOX	1
	HORSE	3
	PORCUPINE	1
	RACCOON	1

Region 5 road kill update, 2014

1/12/2015

SPECIES BY MONTH		
OCT	BADGER	1
	COW	1
	COYOTE	1
	DEER	155
	ELK	6
	HORSE	3
	OWL	1
	RACCOON	4
	SKUNK	2
	UNK	12
	NOV	DEER
DOG		1
ELK		1
HORSE		1
RACCOON		1
SKUNK		2
UNK		10
DEC	DEER	123
	DOG	1

BY HWY	MM	#
003A		
	0-10	1
014A		
	20-30	1
017A		
	10-20	2
	20-30	5
	30-40	2
017B		
	80-90	2
024A		
	190-200	1
	200-210	32
	210-220	52
	220-230	29
	230-240	1
050A		
	170-180	22
	180-190	10
	190-200	2
	210-220	21
	220-230	13
	230-240	6
	240-250	5

BY HWY	MM	#
062A		
	10-20	1
	20-30	3
084A		
	30-40	7
112A		
	0-10	5
	10-20	1
114A		
	30-40	1
	40-50	2
	50-60	6
140A		
	0-10	5
	20-30	8
141A		
	0-10	1
	10-20	1
142A		
	10-20	1
145A		
	0-10	17
	10-20	15
	20-30	1
	30-40	2
	40-50	3
	50-60	8
	60-70	4
	100-110	3
149A		
	0-10	10
	10-20	6
	20-30	2
	30-40	2
	40-50	3
150A		
	10-20	2
151A		
	0-10	9
	10-20	11
	20-30	6
	30-40	1

Region 5 road kill update, 2014

1/12/2015

BY HWY	MM	#
159A	0-10	1
	10-20	7
	20-30	2
	30-40	9
160A	10-20	1
	30-40	3
	40-50	33
	50-60	70
	60-70	22
	70-80	17
	80-90	7
	90-100	75
	100-110	79
	110-120	34
	120-130	39
	130-140	22
	140-150	11
	160-170	1
	180-190	1
	190-200	80
	200-210	9
210-220	5	
230-240	5	
240-250	7	
260-270	11	
270-280	13	
280-290	6	
172A	10-20	16
	20-30	13
184A	0-10	5
	10-20	11
184B	10-20	28
	20-30	25
	30-40	5
285A	10-20	1
	20-30	1
	30-40	4

BY HWY	MM	#
285B	60-70	1
	120-130	2
285C	130-140	15
	140-150	15
	150-160	13
285D	200-210	1
291A	0-10	6
	10-20	4
370A	10-20	1
491B	30-40	7
	40-50	11
	50-60	20
	60-70	13
	70-80	11
550A	0-10	12
	10-20	57
	20-30	8
550B	30-40	3
	30-40	11
	40-50	11
	50-60	6
	70-80	1
	100-110	9
110-120	7	
120-130	5	

Region 5 road kill update, 2014
1/12/2015

Species	hwy mp	#
BADGER		
160A		
91		1
BEAR		
014A		
22		1
18		1
BEAVER		
160A		
101.8		1
BIRD		
160A		
121.5		3
BOBCAT		
160A		
117.3		1
CAT		
145A		
3.5		1
3.6		1
4.2		1
9		1
COW		
017A		
12.3		1
25		1
062A		
17		1
159A		
16.4		1
491B		
33.5		1
COYOTE		
491B		
65.8		1
DEER		
003A		
2		1

Species	hwy mp	#
DEER		
017A		
17.5		1
18.2		1
18.5		1
21.2		1
017B		
79.5		1
80		1
024A		
195.5		1
196		1
197.3		1
197.8		1
198.5		1
200		2
200.5		1
201.2		1
201.7		1
202		4
203		1
203.3		1
203.5		1
203.8		1
203.9		1
204		5
204.2		1
204.3		1
204.5		3
204.6		1
205		2
205.1		1
205.2		1
205.3		1
205.5		2
205.9		1
206		5
206.1		1
206.5		2
207		8
207.3		1

Species	hwy mp	#
DEER		
024A		
207.5		2
207.8		2
207.9		1
208		7
208.8		1
209.3		2
209.9		1
210.5		1
213		1
213.4		1
213.9		1
214		3
214.5		3
215.5		1
216		5
216.4		1
216.5		3
216.8		1
217		1
217.8		2
218		1
219		1
219.2		2
219.5		1
220		2
220.5		2
224.8		2
225.7		1
050A		
167.3		3
167.9		1
168.1		1
169.9		1
170		1
170.2		2
170.3		1
170.8		2
171.1		1
171.4		1

Region 5 road kill update, 2014
1/12/2015

Species	hwy mp	#
DEER		
050A		
172.1	1	1
172.5	1	1
172.8	3	3
181.8	1	1
183.1	2	2
183.3	1	1
183.8	1	1
185.5	2	2
209.5	1	1
210	1	1
210.1	1	1
210.2	2	2
210.7	1	1
210.8	1	1
211	5	5
212	2	2
212.5	2	2
212.75	1	1
213.8	1	1
219	2	2
220	2	2
221	3	3
221.5	1	1
222	4	4
224.3	1	1
225.5	1	1
227	1	1
228	1	1
230	1	1
233	1	1
237	2	2
238	1	1
240	2	2
062A		
21.3	1	1
112A		
1	3	3
2	1	1

Species	hwy mp	#
DEER		
114A		
30.5	1	1
41.4	2	2
50.4	1	1
50.8	1	1
51.6	1	1
53	1	1
53.1	2	2
140A		
1	2	2
4.1	1	1
15	2	2
19.9	1	1
20	1	1
23.4	1	1
.1-23.4	5	5
141A		
3.5	1	1
7	1	1
145A		
1.9	1	1
3.1	2	2
3.2	1	1
3.5	1	1
4.1	1	1
5.5	1	1
6.3	3	3
7.6	1	1
7.9	1	1
8.2	1	1
9	1	1
14.2	1	1
23.3	1	1
25.6	1	1
25.9	1	1
43.4	1	1
48.6	1	1
50.7	1	1
50.8	1	1
51.8	1	1
53.9	1	1
61	1	1
98.84	1	1
103	1	1

Species	hwy mp	#
DEER		
149A		
1	3	3
2	2	2
3	2	2
6.2	1	1
7	1	1
10	1	1
12	1	1
21	1	1
23	1	1
30	1	1
31	1	1
36	1	1
150A		
13.5	1	1
151A		
14	2	2
17	1	1
25	1	1
0-17	14	14
0-34	8	8
159A		
27	1	1
27.7	1	1
32	2	2
32.4	1	1
32.5	2	2
160A		
6.4	1	1
35.8	1	1
40.5	1	1
40.7	1	1
41	4	4
41.3	1	1
41.4	1	1
41.6	1	1
41.7	1	1
41.8	2	2
41.9	2	2
42.1	2	2
42.4	1	1
42.5	2	2
43	1	1

Region 5 road kill update, 2014
1/12/2015

Species	hwy	mp	#
DEER			
160A			
43.1			2
43.2			1
43.7			1
44			1
44.1			2
44.2			1
45.3			1
45.6			1
45.7			1
45.8			1
45.9			1
46.1			1
46.2			1
46.8			1
47.1			1
47.7			2
47.9			1
48			2
48.3			1
48.4			2
48.5			2
48.6			5
48.7			2
48.8			1
48.9			4
49			1
49.1			1
49.5			2
49.6			1
49.9			2
50			3
50.4			2
50.5			3
50.7			1
50.9			1
51.1			1
51.4			1
51.9			1
52.3			1
52.7			1
52.8			1
52.9			1

Species	hwy	mp	#
DEER			
160A			
53			1
53.2			1
53.4			1
53.5			1
53.8			2
53.9			1
54			2
54.2			1
54.3			1
54.4			2
54.5			1
54.8			1
55			4
55.1			1
55.4			2
55.6			1
55.7			2
56.2			1
56.76			1
56.8			1
56.9			2
56.95			1
57.1			1
59.2			1
60.8			1
61.2			1
62			1
70			1
75			1
81			1
82			1
83.8			1
84			1
84.5			2
85			4
85.1			1
85.2			1
85.5			1
85.6			1
86			8
86.7			1
87			2

Species	hwy	mp	#
DEER			
160A			
87.8			1
88			8
88.3			1
88.5			2
89			5
89.2			1
90			5
90.5			1
91			2
91.4			2
91.5			1
91.7			1
91.9			1
92			2
92.8			1
93			2
93.1			1
93.5			1
94			1
94.2			2
94.5			3
94.7			1
95			1
95.2			1
95.5			3
95.7			1
96			1
96.2			1
96.5			1
96.7			1
97			2
97.2			1
97.4			2
97.5			1
97.8			1
97.9			1
98			3
98.1			1
98.2			1
98.5			1
98.7			1
98.8			1

Region 5 road kill update, 2014
1/12/2015

Species	hwy	mp	#
DEER			
160A			
98.9			1
99			3
99.2			2
99.4			1
99.5			1
99.8			1
100			6
100.2			1
100.4			1
100.5			2
100.8			1
100.9			1
101			3
101.1			2
101.3			1
101.4			1
102			3
102.2			1
102.5			1
103			2
103.1			1
103.3			1
103.5			1
103.6			1
103.8			1
104			2
104.1			1
104.2			2
104.6			1
105			1
105.1			1
105.7			1
105.9			1
106.5			1
106.7			1
106.9			3
107			1
107.5			1
107.8			1
108			1
108.5			2
108.6			2

Species	hwy	mp	#
DEER			
160A			
108.8			1
109.5			3
109.8			2
110			1
110.5			1
110.6			1
113			1
113.5			1
113.9			1
114			2
114.1			1
114.5			1
115.6			2
117.5			1
119			1
119.1			1
119.6			1
121.3			1
121.5			1
124.6			2
132.7			1
133.6			1
134.4			1
134.6			1
135			1
136.8			1
142.6			1
143.8			1
159.5			1
186.5			1
187.8			1
188			4
188.5			1
188.6			2
189			6
189.5			5
189.6			1
189.8			2
189.9			1
190			10
190.1			2
190.5			4

Species	hwy	mp	#
DEER			
160A			
191			8
191.2			1
191.3			1
191.9			1
192			11
192.8			1
192.9			1
193			6
193.1			1
193.2			1
193.7			1
194			3
194.4			1
194.7			1
195			1
195.3			1
196			2
197			1
198.1			1
203.4			1
204			1
206.2			1
227			1
230			1
234.05			1
234.2			1
237			1
237.5			2
238.9			1
256			1
258.3			1
258.4			2
260.3			2
261.1			2
262			1
262.3			1
263.1			1
266.2			1
267.1			1
267.8			1
268			1
272.2			2

Region 5 road kill update, 2014
1/12/2015

Species	hwy	mp	#
DEER			
160A			
	277.2		1
	278.8		1
	279.4		1
	279.6		1
	121.4-144		6
	121.5-144		18
	121-143		6
	62-82		11
172A			
	5		1
	15.2		2
	16.3		1
	18.2		1
	19		1
	19.5		1
	19.9		1
	23.2		1
	24		2
	0-24		6
	7.3-24		12
184A			
	2		1
	2.2		1
	3		1
	4.1		1
	4.3		1
	5		1
	5.2		1
	5.8		5
	6.2		1
	6.3		1
	6.5		1
	7.6		1
184B			
	9		1
	9.2		1
	9.8		1
	10.1		1
	10.5		1
	11.2		1
	11.3		2

Species	hwy	mp	#
DEER			
184B			
	11.6		4
	11.7		2
	11.8		3
	12.3		1
	12.5		3
	12.8		1
	13.3		1
	13.7		1
	14.2		1
	15		1
	15.2		1
	15.7		1
	15.9		1
	16		1
	16.2		1
	16.8		2
	17		1
	20.5		2
	21.3		1
	22		1
	22.1		1
	22.2		1
	22.4		1
	23.1		2
	23.8		1
	25.6		1
	25.8		1
	25.9		2
285A			
	14.7		1
	15.5		1
	28.5		1
	30		1
	32.3		1
285B			
	121		2
285C			
	127.6		1
	128		1
	128.5		1
	129.1		1

Species	hwy	mp	#
DEER			
285C			
	130		3
	131.5		2
	131.6		3
	132.2		1
	133.8		1
	135		1
	137		1
	137.5		1
	142.9		1
	143.1		1
	143.3		3
	144.1		1
	144.7		1
	145.1		1
	145.2		4
	145.3		1
	145.5		1
	145.7		1
	146.8		1
	147		1
	147.1		1
	147.2		1
	147.5		1
291A			
	2.3		1
	2.4		1
	3		2
	3.3		1
	3.6		1
	5		2
	7		1
	7.5		1
370A			
	7		1
491B			
	27		1
	29.5		1
	30		1
	30.5		1
	34.5		1
	35		1
	36.8		1

Region 5 road kill update, 2014
1/12/2015

Species	hwy mp	#
DEER		
491B		
38.5		1
40.1		1
43.1		1
43.3		1
44		1
44.1		3
45		1
46.3		1
47.9		2
48		1
48.1		1
48.2		1
48.3		1
48.4		1
48.9		1
49.8		1
51.1		1
51.2		1
51.3		1
52		1
52.8		1
52.9		2
53		1
54		1
57.2		1
58		1
58.4		1
58.7		1
58.8		1
60.1		1
60.5		2
60.7		1
60.8		1
62		1
63.9		1
64.2		1
65.5		1
67		1
67.1		2
67.4		1
67.8		2
68.37		1

Species	hwy mp	#
DEER		
491B		
68.8		1
69.58		1
550A		
1.5		1
3		2
4		3
6		2
6.5		1
6.8		1
7		2
7.2		1
7.5		1
7.6		1
7.7		1
8		8
8.5		1
8.8		3
9		3
9.5		1
10		3
10.2		2
10.5		1
11		4
11.5		1
12		3
12.2		1
13		1
13.7		1
14		5
14.5		5
14.7		2
14.8		2
15		5
15.2		1
16		2
0-16.4		6
550B		
23		1
24		1
25		1
26		2
28		1

Species	hwy mp	#
DEER		
550B		
28.2		1
30.3		1
32.8		1
33.9		1
35.2		1
35.6		1
40		2
40.2		1
41.7		1
41.9		1
44		1
47.5		1
49.5		1
67		1
100		1
103		2
107		1
110		2
111		1
112.3		1
113		1
115		1
117		1
DOG		
160A		
58.5		1
206.6		1
234.5		1
235.8		1
ELK		
017A		
7		1
21		1
024A		
194.5		1
197.8		1
198		1
220.8		1
222.5		1
224.1		1
224.2		1

Region 5 road kill update, 2014
1/12/2015

Species	hwy	mp	#
ELK			
050A			
	172.4		1
	173		1
	174.6		1
	175.2		1
	178		1
	178.8		1
	184.5		1
	184.6		1
	210.8		1
	212.5		2
	227		1
062A			
	14		1
084A			
	27.9		1
145A			
	38		1
	42.5		1
	43.5		1
	52		1
	60		1
	64.75		1
150A			
	6		1
159A			
	0.4		1
	16.5		1
	27.6		1
	28.9		1
160A			
	65		2
	65.5		1
	68.8		1
	74		1
	118.8		1
	121.49		1
	144		1
	182.2		1
	237.7		1
	266		3

Species	hwy	mp	#
ELK			
160A			
	266.4		2
	270.9		1
	272.1		1
	277.2		1
	278.1		1
285A			
	31		1
285C			
	136		1
	139.2		1
	143.7		2
550B			
	29.9		1
	30		2
	40		1
	40.1		1
	43.5		1
	46		1
	46.4		1
	46.5		1
	49		1
	95		1
FOX			
145A			
	9.2		1
160A			
	115		1
HORSE			
159A			
	5.78		1
	6.2		1
	9.1		1
	11.3		2
	12		1
	14		1

Species	hwy	mp	#
OWL			
160A			
	91		1
PORCUPINE			
160A			
	188		1
PRAIRIE DOG			
160A			
	117		2
	121.5		1
PRONGHORN			
112A			
	12.3		1
285B			
	64		1
285C			
	137.8		1
RABBIT			
145A			
	1		1
	6		1
160A			
	91.41		2
	95		3
	110		1
184B			
	15		1
	23.1		1
RACCOON			
145A			
	1.5		1
	2		1
	4		2
	4.1		1
	6.2		1
	12.2		1
	14.1		1
160A			
	121.4		1
	206.6		2
	214.5		1

Region 5 road kill update, 2014
1/12/2015

Species	hwy mp	#
RACCOON		
184B	14.6	1
SHEEP		
285D	196.4	1
SKUNK		
145A	3	2
160A	91.4	2
	91.41	4
	100	2
	121.5	6
	204.8	1
184B	10.2	1
	21.3	1
SNAKE		
160A	102	1
TURKEY		
160A	121	1
UNK		
084A	27.9	6
112A	2	1
142A	12.2	1
145A	47	1
	52.5	1
	56.2	1
149A	2	1
	2.2	2
	9.3	2
	35.2	2

Species	hwy mp	#
UNK		
151A	15	1
160A	30	1
	35	1
	91.41	1
	121	1
	121.49	4
	193.3	1
	236.5	1
	18.6-54	5
184B	10.5	1
	16.6	1
	18.2	1
	22	1
	26	1
285C	131.5	1
491B	34	1
	40.1	1
550B	21.01	1
	101	2
	103	2
	104	1
	110	1
	116	2
	117.3	1

PATROLS REPORTING	
5301	5702
5302	5703
5303	5704
5304	5705
5305	5707
5307	5708
5310	5709
5311	5710
5312	5711
5315	5717
5317	5718
5320	5719
5321	5723
5324	5724
5327	5725
5396	5727
5701	5728