



COLORADO

Transportation  
Investment Office

# Central 70 Globeville and Elyria-Swansea (GES) Tolling Equity Program Progress Report

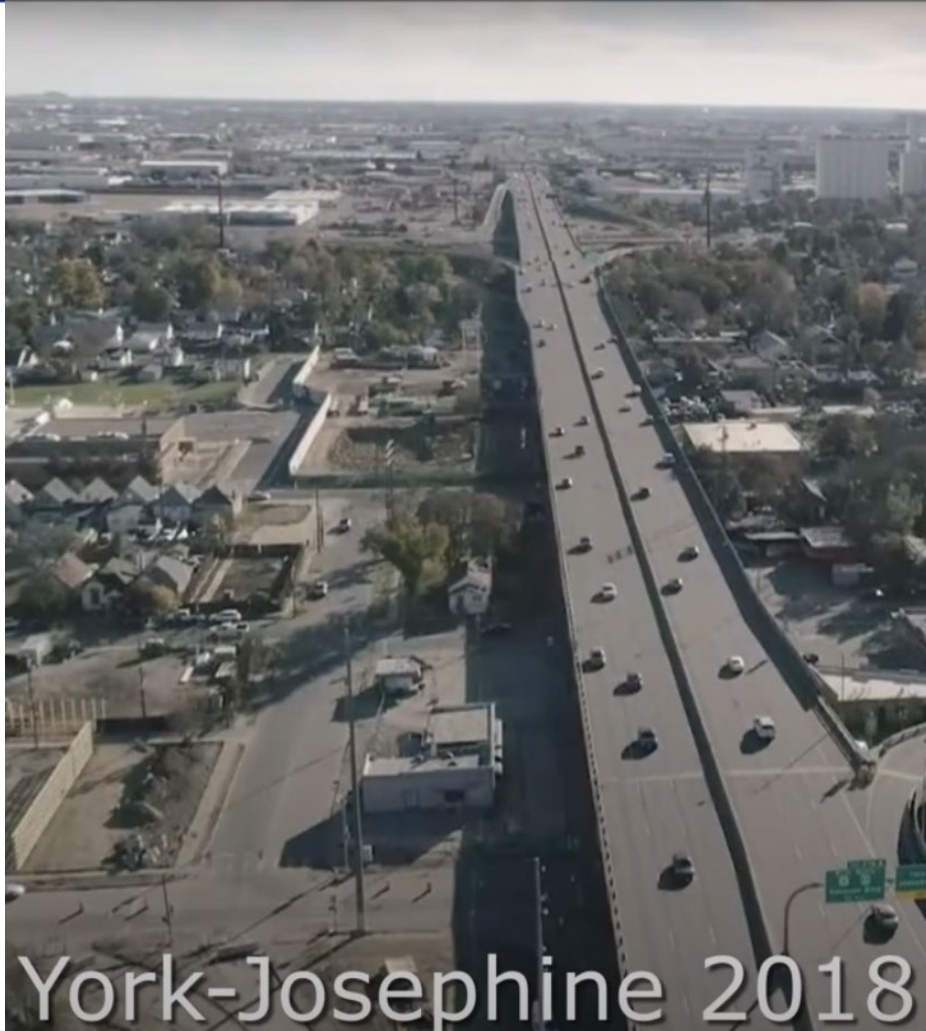
*January 2025*

---

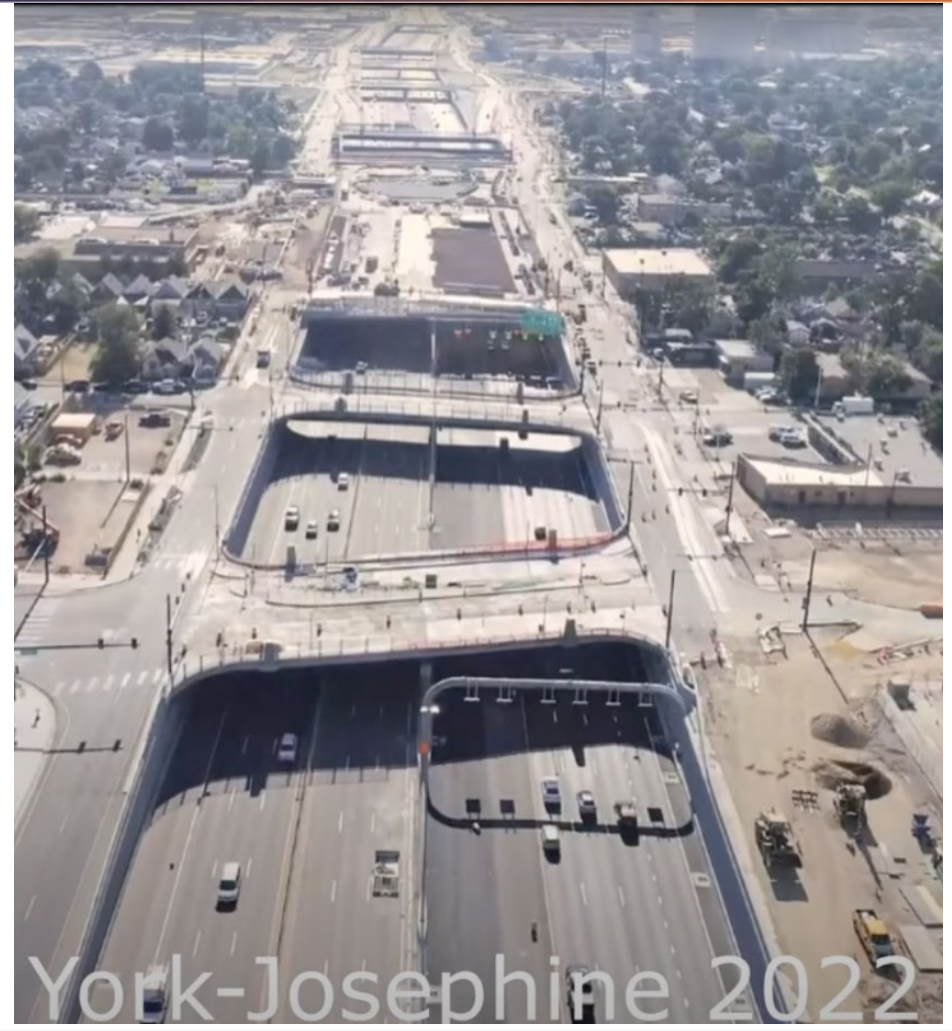
# Overview

1. Background
2. Program Development, Implementation, and Launch
3. Results to Date
4. Next steps

# Central 70 Project: Before and After

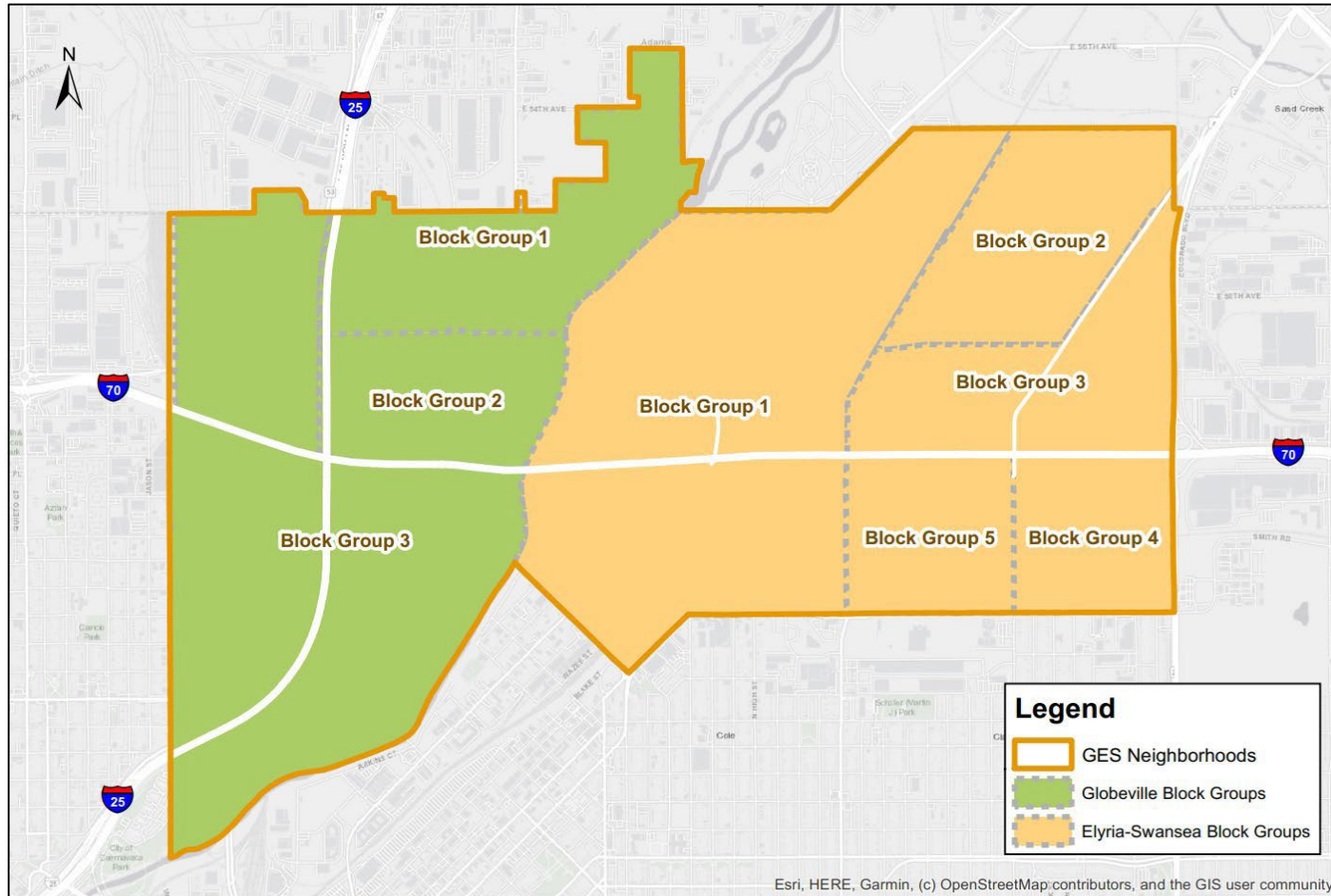


York-Josephine 2018



York-Josephine 2022

# Globeville-Elyria-Swansea Neighborhoods



## Background

Around 10,000 residents

Predominately Hispanic population

Lower income area

# Program Development, Implementation, and Launch

# Approved Program: Three Elements

## Benefits:

Transponder (HOV3+)  
\$100 credit in the first year and free transit passes. Participants can have both.

**Funding:** 15% of the net toll revenue divided between both benefits based on input from GES residents\* (\$220k in year 1)

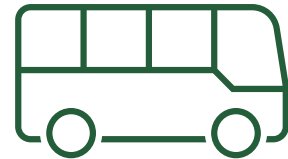
**Eligibility:** Resident of GES and below 200% FPL household income threshold;

- Over 5000 people eligible for transit passes.
- Estimated 2000 vehicles in the community eligible for toll credits.

# Benefits distributed to date

## Benefit Distribution:

Transit passes are distributed within the community at rec centers, libraries and schools. Enrollment in the toll credits is available within the community and online.



## Transit Passes (2024)

- \$258k total
- 48,820 single ride tickets (54% increase)
- 1347 monthly passes (Over 1000% increase)

## Toll Credits (2024)

- Over \$14k credits added
- Almost 100 registered vehicles (22% increase)



# Possible changes to the program to increase participation

## Major Change: Adjust the income eligibility

- Increase the FPL percentage or change to Area Median Income (AMI)?
- AMI represents the middle point of all incomes in a region, where 50% of households earn above that amount and 50% earn below

## Minor Change: Changing the requirement that a vehicle must be registered in GES

- This was identified in the survey conducted as an additional barrier that could be easily removed and potentially increase enrollment.



# FPL to AMI Comparison

Household Size	200% FPL <small>current</small> criteria	100% AMI <small>new criteria</small>
1	\$30,120	\$48,834
2	\$40,880	\$56,372
3	\$51,640	\$63,867
4	\$62,400	\$70,574
5	\$73,160	\$76,013
6	\$83,920	\$81,451

Changing to AMI is estimated to increase eligibility by 18% (5300 residents)

# Next Steps



Bring the proposed changes to the program back to the board for approval at a future meeting.



Conduct additional outreach within the community to notify them of the changes, once approved.



Continue to survey and monitor the program to determine ways to improve participation.