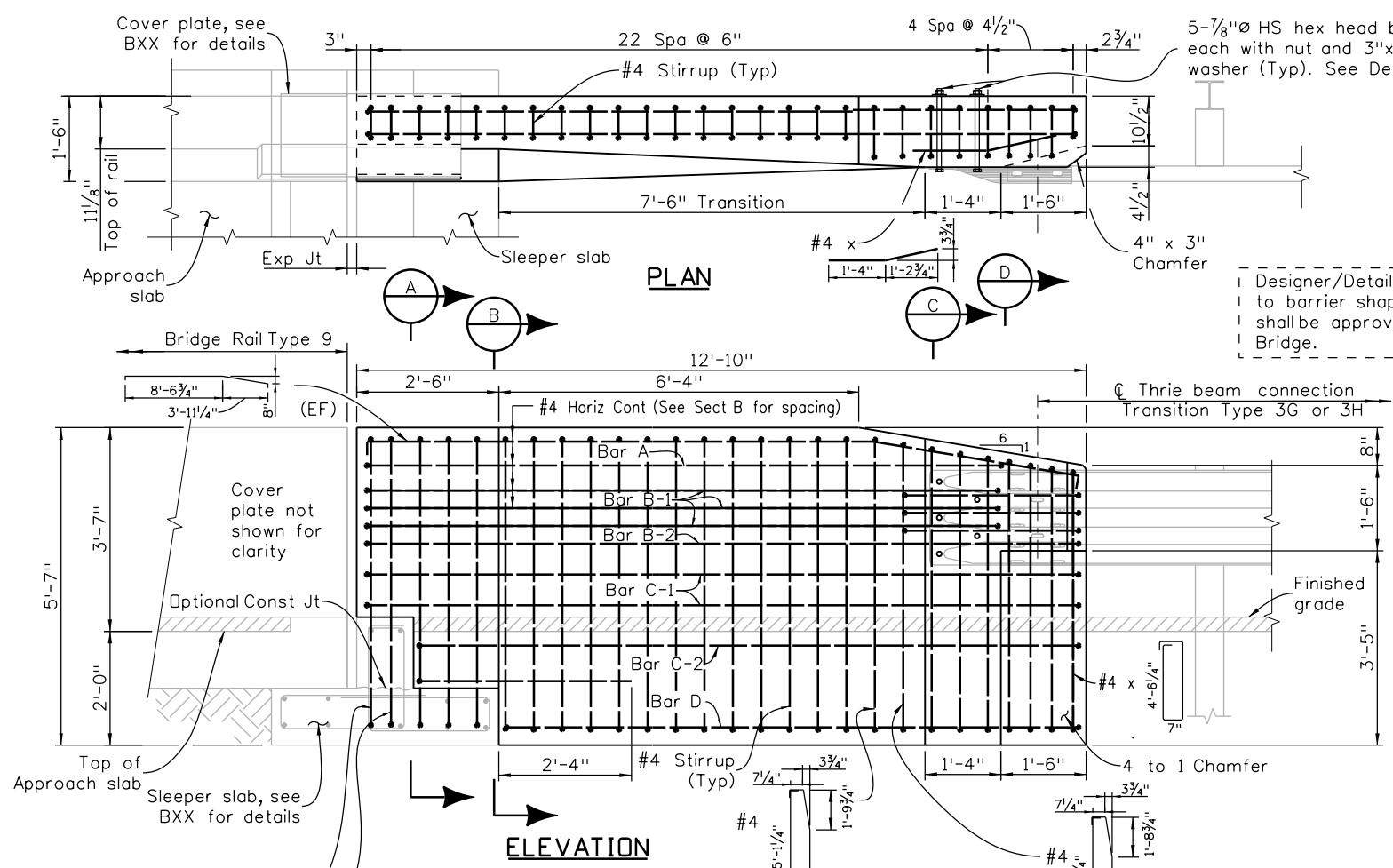
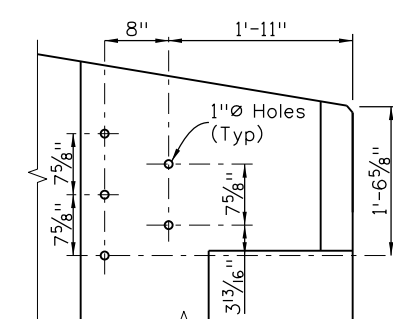


12/19	1/20	5/22	7/22	9/24
Revision Dates				

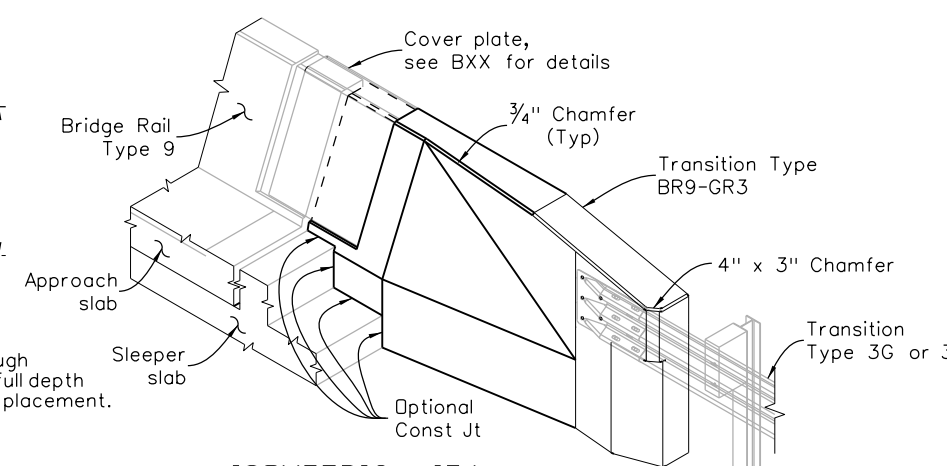
INITIALS	DESIGN	DATE	DETAIL	DATE	QUANTITY	DATE
By						
Checked By						



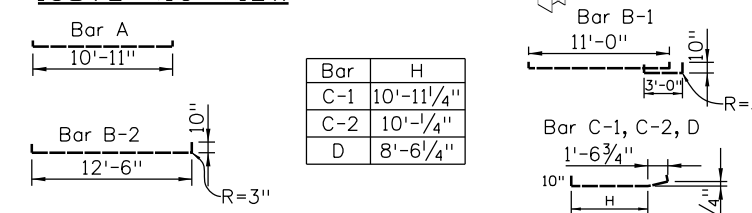
- NOTES:**
1. Payment will be made under item 606, Transition Type BR9-GR3, consisting of Concrete Class DF, reinforcing steel, bolts, nuts, washers, and concrete sealer. Excavation and backfill will not be paid for separately, but shall be included in the work.
  2. Cover plate shall be included in cost of Bridge Expansion Device.
  3. Transitions shall be constructed tapering perpendicular to roadway cross slope. Vertical dimensions are perpendicular to the longitudinal roadway grade.
  4. The top, end and inside face of the transition rail shall receive a coating conforming to Item 515, Concrete Sealer, compatible with the concrete coating/stain shown in the plans.
  5. Concrete and reinforcing steel shall conform to the requirements of Sections 601 & 606 and 602 respectively unless otherwise noted.
  6. All longitudinal reinforcement shall terminate with standard stirrup hooks as shown. Rotate or adjust reinforcing hooks to avoid interferences as required.
  7. Rotate or adjust rebars at back face to avoid interference as required.



Note: Holes shall be cored through concrete or 1" inside diameter full depth inserts placed before concrete placement.



**ISOMETRIC VIEW**



Bar	H
C-1	10'-11 1/4"
C-2	10'-1 1/4"
D	8'-6 1/4"

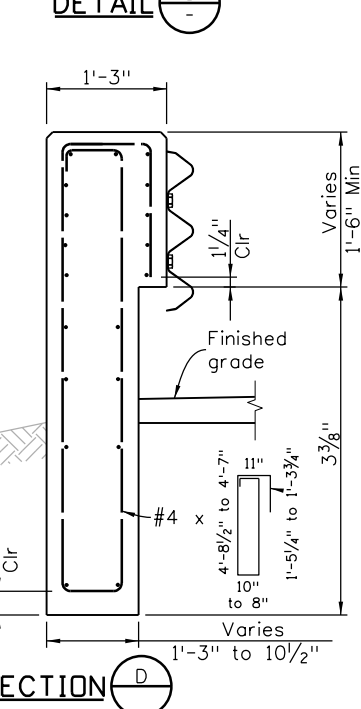
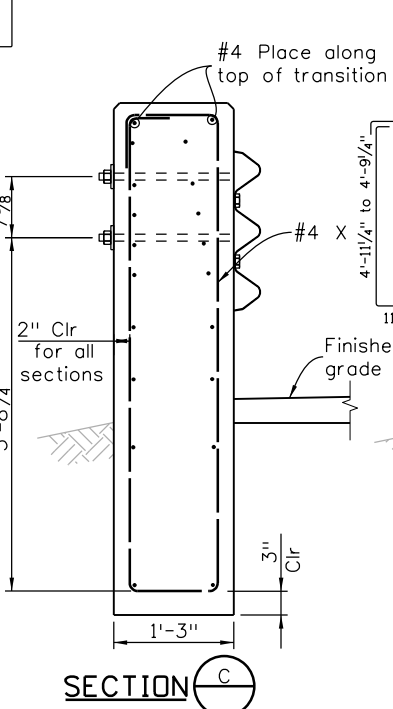
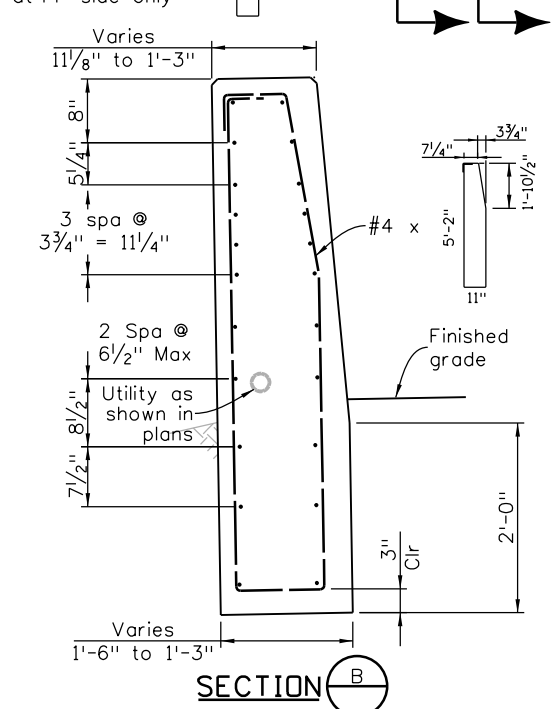
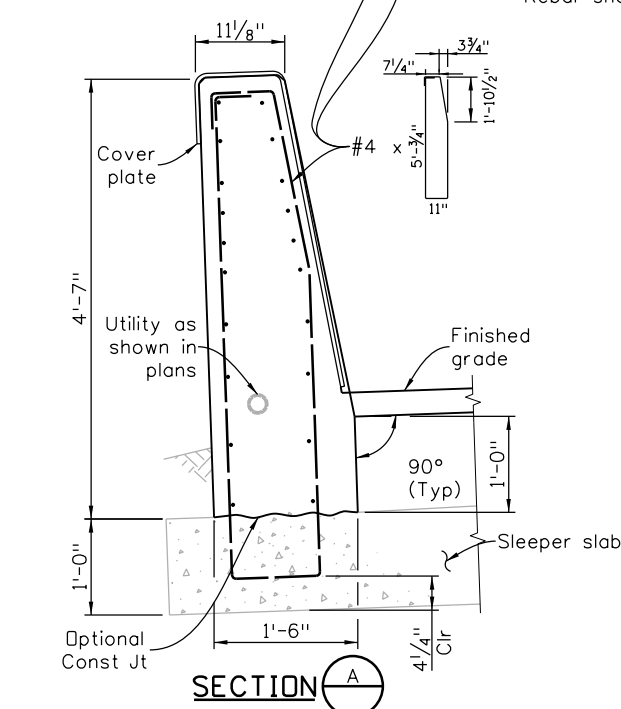
**REINFORCING DIMENSIONS**

**INFORMATION ONLY**

Description	Unit	Qty
Structural Steel (Galvanized)	LB	19
Concrete Sealer	SY	9.6
Concrete Class DF	CY	3.1
Reinforcing Steel (Epoxy Coated)	LB	414

**DESIGN DATA:**

Reinforcing Steel:  $f_y = 60$  KSI Min  
 Concrete: Class DF  $f'_c = 4.5$  KSI  
 All reinforcing bends shown shall use a 4D pin diameter.



All seals for this set of drawings are applied to the cover page(s)	Print Date: \$DATE\$	Sheet Revisions		Colorado Department of Transportation		As Constructed		TRANSITION TYPE BR9-GR3		Project No./Code		
	File Name: Sheet_B-606-9C.dgn	Date:	Comments	Init.	2829 West Howard Place, 3rd Floor Denver, CO 80204 Phone: 303-512-4079 FAX: 303-757-9197		No Revisions:		HEADER VERSION		Project Number	
	Horiz. Scale: None Vert. Scale: As Noted				Staff Bridge Branch		Revised:		Designer: XXXXXXXX	Structure Numbers: X-XX-XX	Code	
	Unit Information Unit Leader Initials				Initials		Void:		Detailer: XXXXXXXX	Subset Sheets: BXX of XXX	Sheet Number	