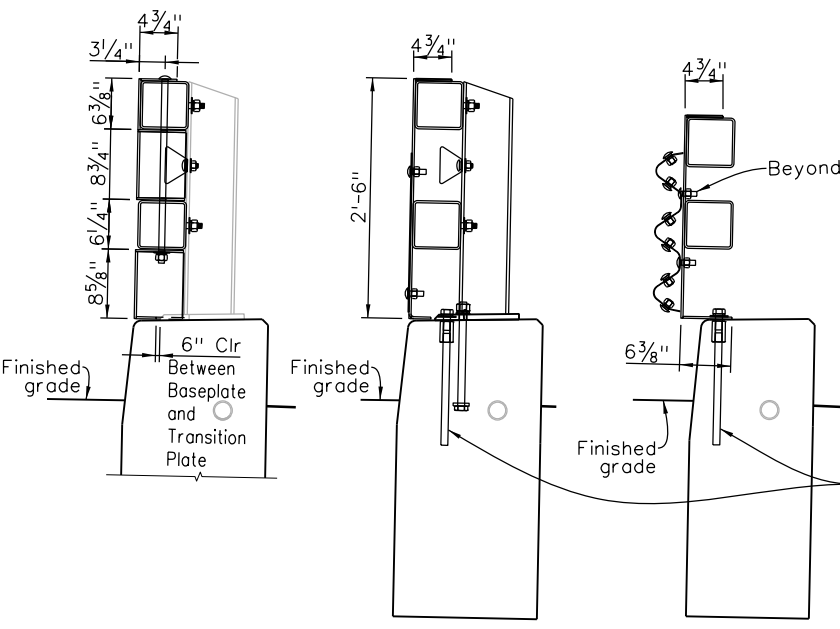
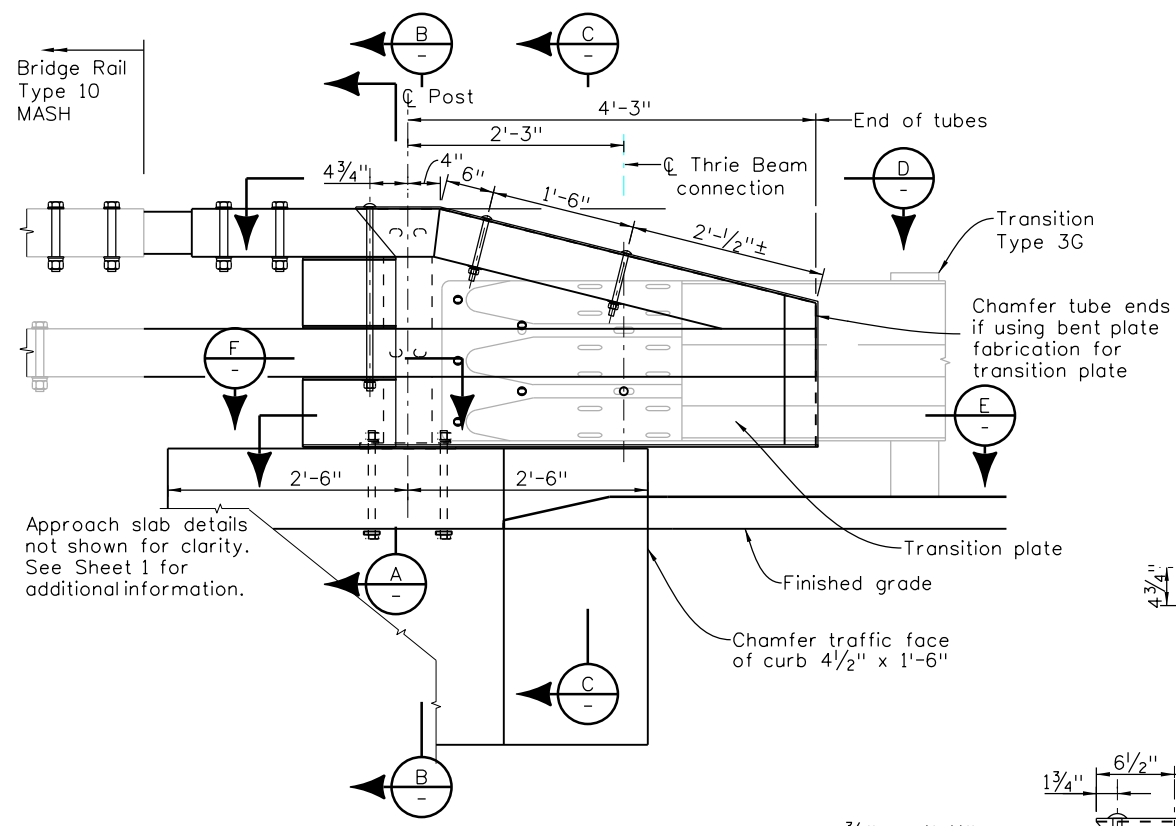
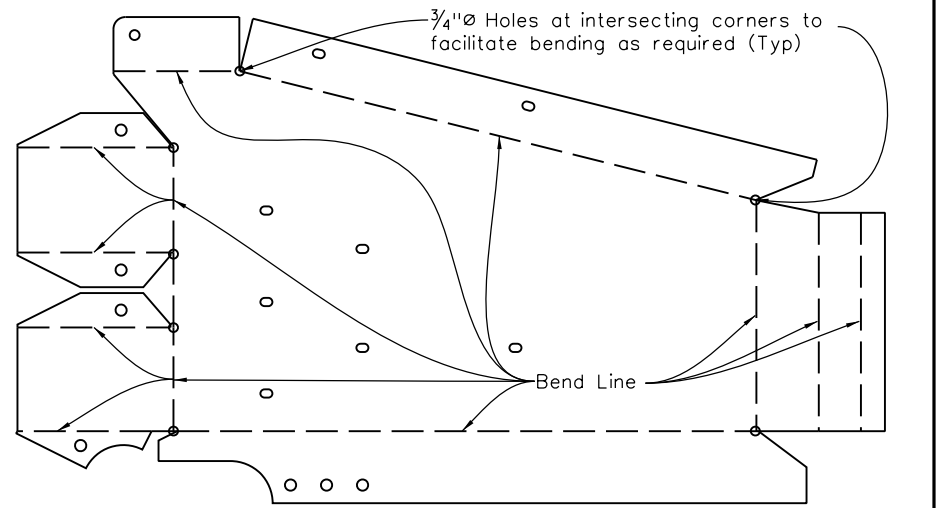
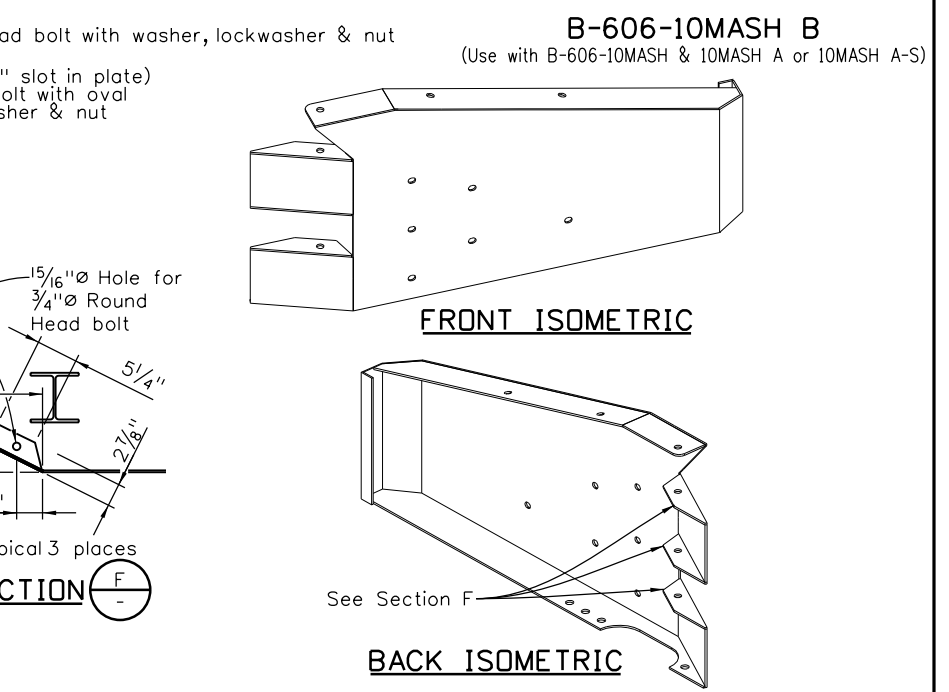
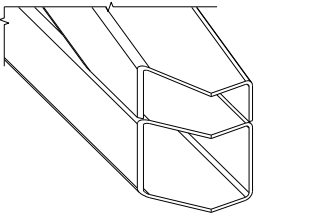
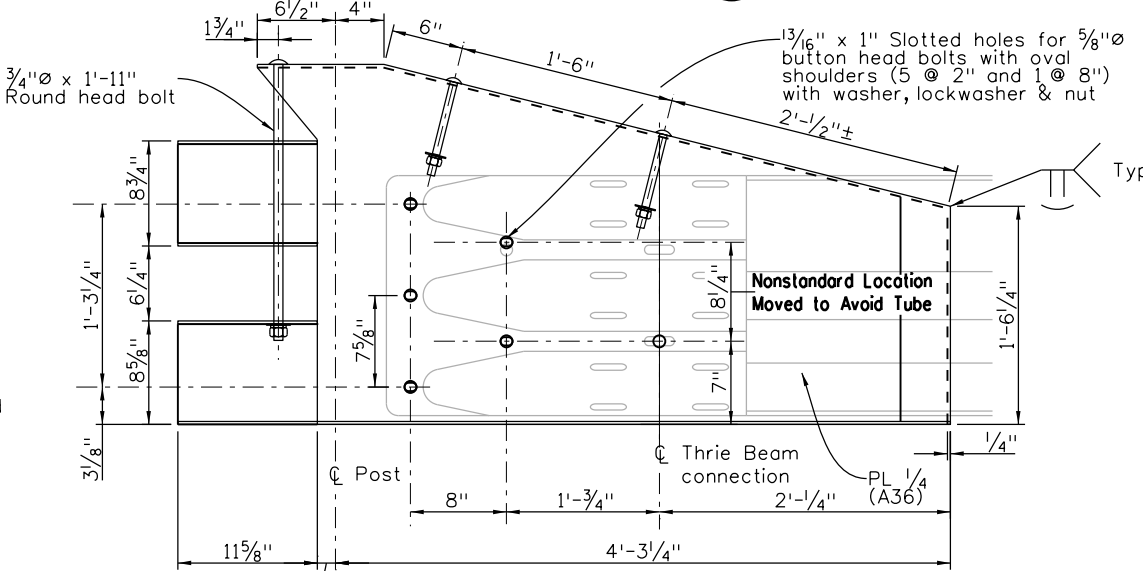
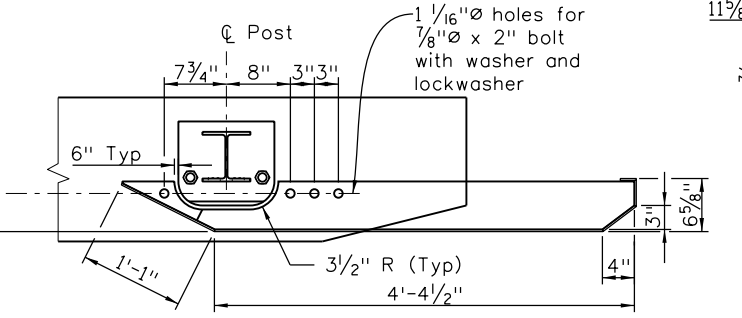
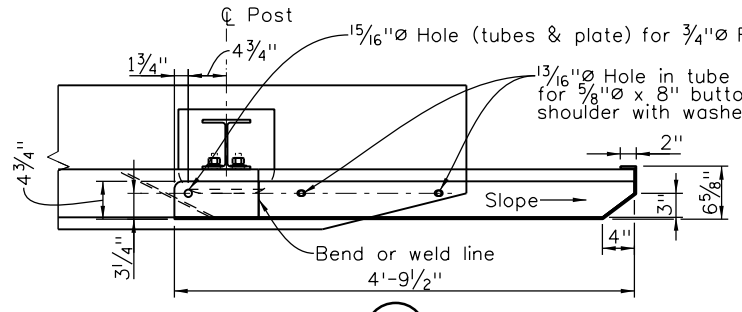


12/19	12/19	1/20	7/22	3/23	9/24
12/19	12/19	1/20	7/22	3/23	9/24

INITIALS	DESIGN	DATE	DETAIL	DATE	QUANTITY	DATE
By						
Checked By						



See Transition BR10M-GR3 Sheet 1 for Curb Details (Typ)



- NOTES:**
1. See BXX (B-606-10MASH A/A-S) for payment details and quantities.
 2. Shaded Linework is from other Pay Items.
 3. Transition Plate may be fabricated with bent plates and/or welded construction. All welds shall be square root with convex contouring.
 4. Verify location of Cover Plate holes based on supplied Thrie Beam Terminal Section (Connector).

All seals for this set of drawings are applied to the cover page(s)

Print Date: \$DATE\$
File Name: Sheet_B-606-10MASHB.dgn
Horiz. Scale: None Vert. Scale: As Noted
Unit Information Unit Leader Initials

Sheet Revisions		
Date:	Comments	Init.

Colorado Department of Transportation

2829 West Howard Place, 3rd Floor
Denver, CO 80204
Phone: 303-512-4079
FAX: 303-757-9197

Staff Bridge Branch **Initials**

As Constructed
No Revisions:
Revised:
Void:

TRANSITION TYPE BR10M-GR3 SHEET 2-TUBE AND PLATE DETAILS			
Designer:	XXXXXXXX	Structure Numbers	X-XX-XX
Detailer:	XXXXXXXX	Structure Numbers	X-XX-XX
Sheet Subset:	BRIDGE	Subset Sheets:	BXX of XXX

Project No./Code	
Project Number	Code
Sheet Number	