

Purpose

Use this procedure to add a quiz to a presentation.

Trigger

Perform this procedure when you need to add a quiz you have created from a template to a presentation.

Prerequisites

- The Quiz must be created and presentation open to the Articulate ribbon.

Menu Path

Use the following menu path to begin this transaction:

- None

Transaction Code

Articulate

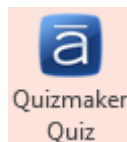
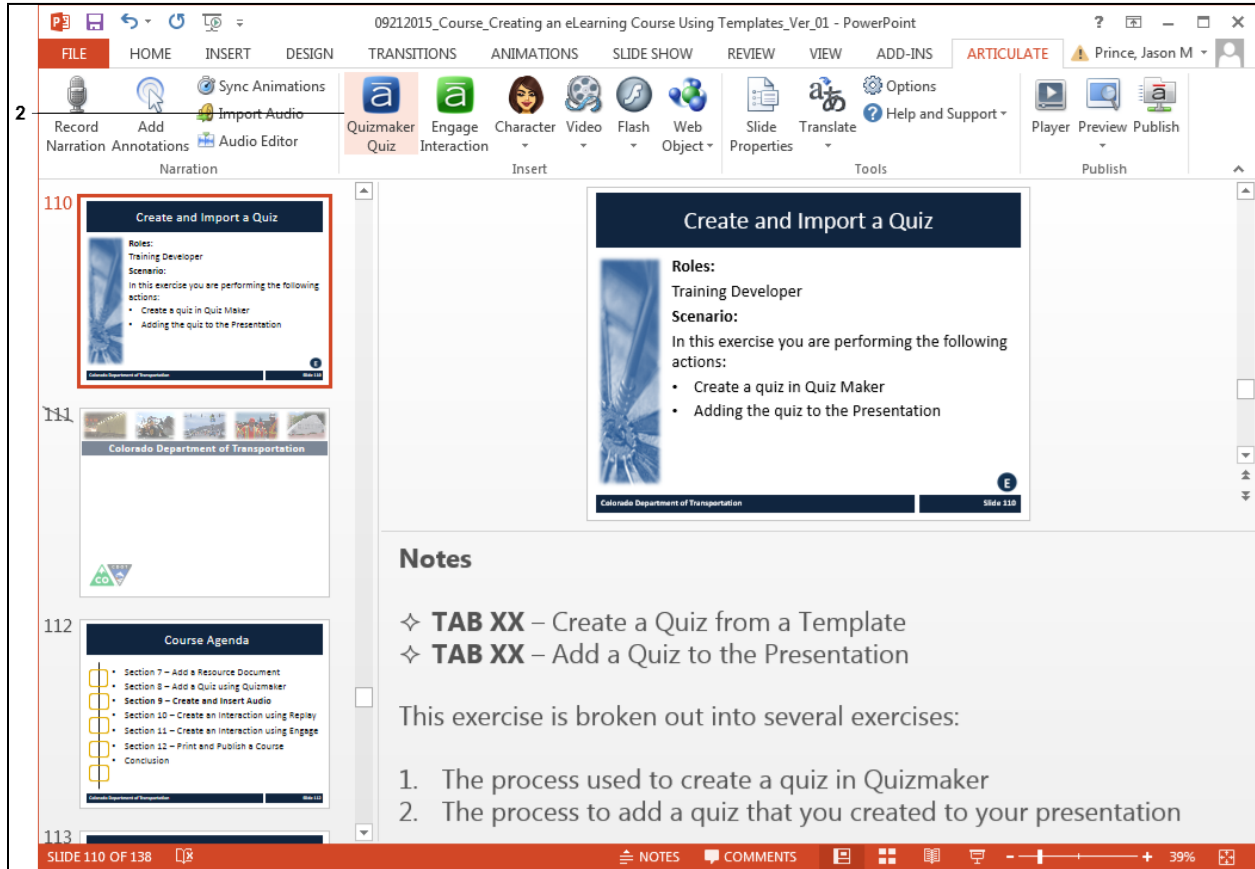
Helpful Hints

- When importing the quiz it will appear after any slide you have selected.
- Review the title of the quiz when it appears to confirm you have imported the correct file.
- Click the **Edit in Quizmaker** button to review the quiz
- Any changes you make to the quiz in the presentation will also be saved in the file.

Procedure

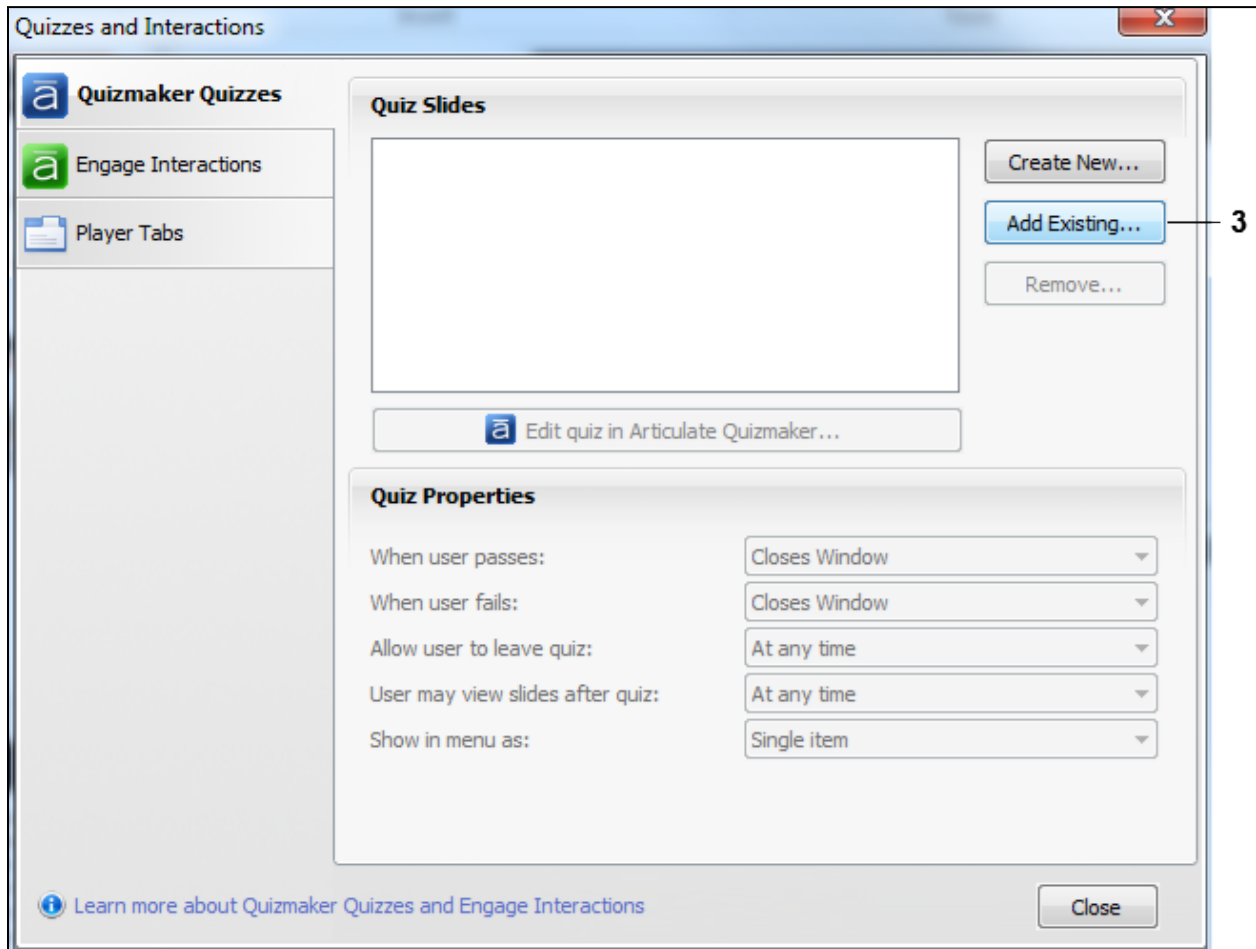
1. Start the transaction from an open presentation in the *Articulate* ribbon.

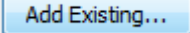
PowerPoint



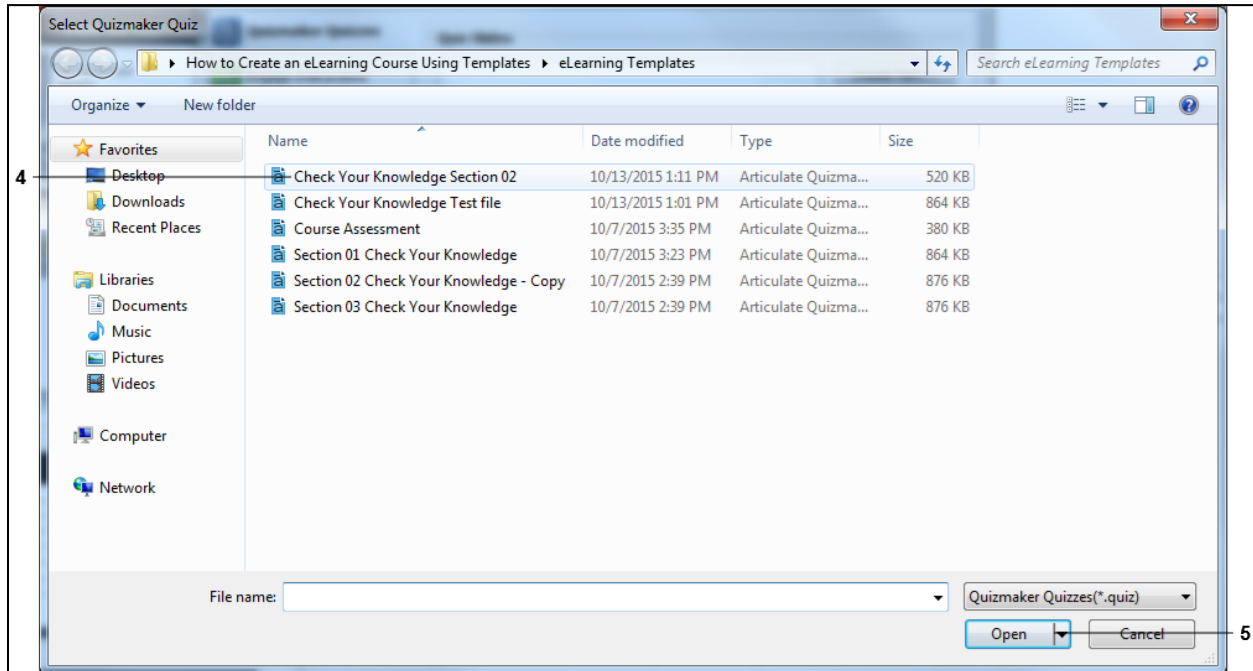
2. Double left click **Quizmaker Quiz** button . The *Quizzes and Interactions* screen displays.

Quizzes and Interactions



3. Click **Add Existing...** button . The *Select Quizmaker Quiz* screen displays allowing you to navigate to the quiz.

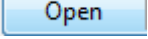
Select Quizmaker Quiz



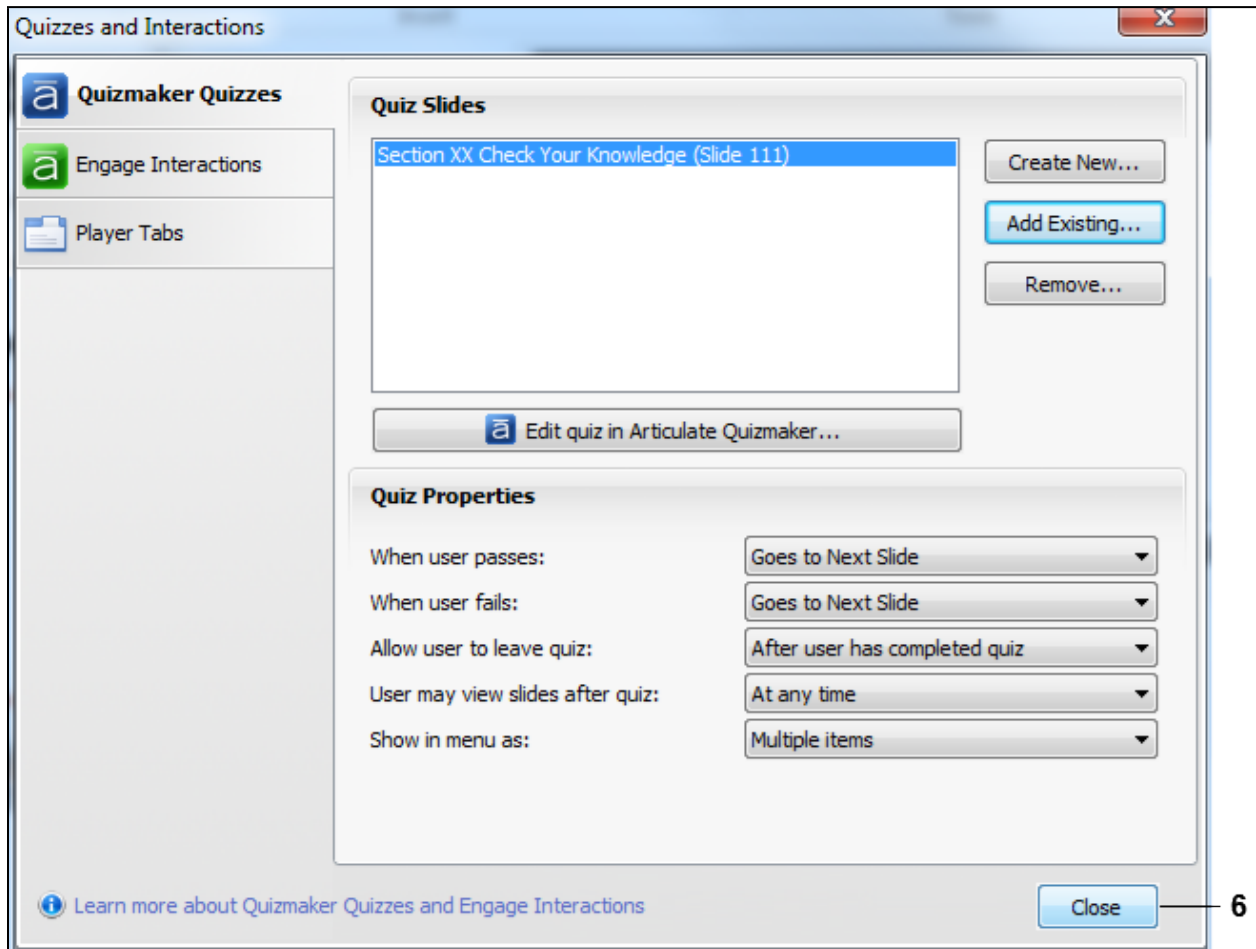
4. Navigate to the folder containing the quiz you want to add to your presentation and left click on the file. In this example, **Check Your Knowledge Section 02** Check Your Knowledge Section 02 was selected.

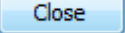


There are two type of quizzes you are able to add to the presentation. The *Course Assessment* can only be used once and is used by the LMS to "grade the quiz" The *Check your Knowledge* quizzes are used to assess understanding and are not used by the LMS and can be used as many times as needed.

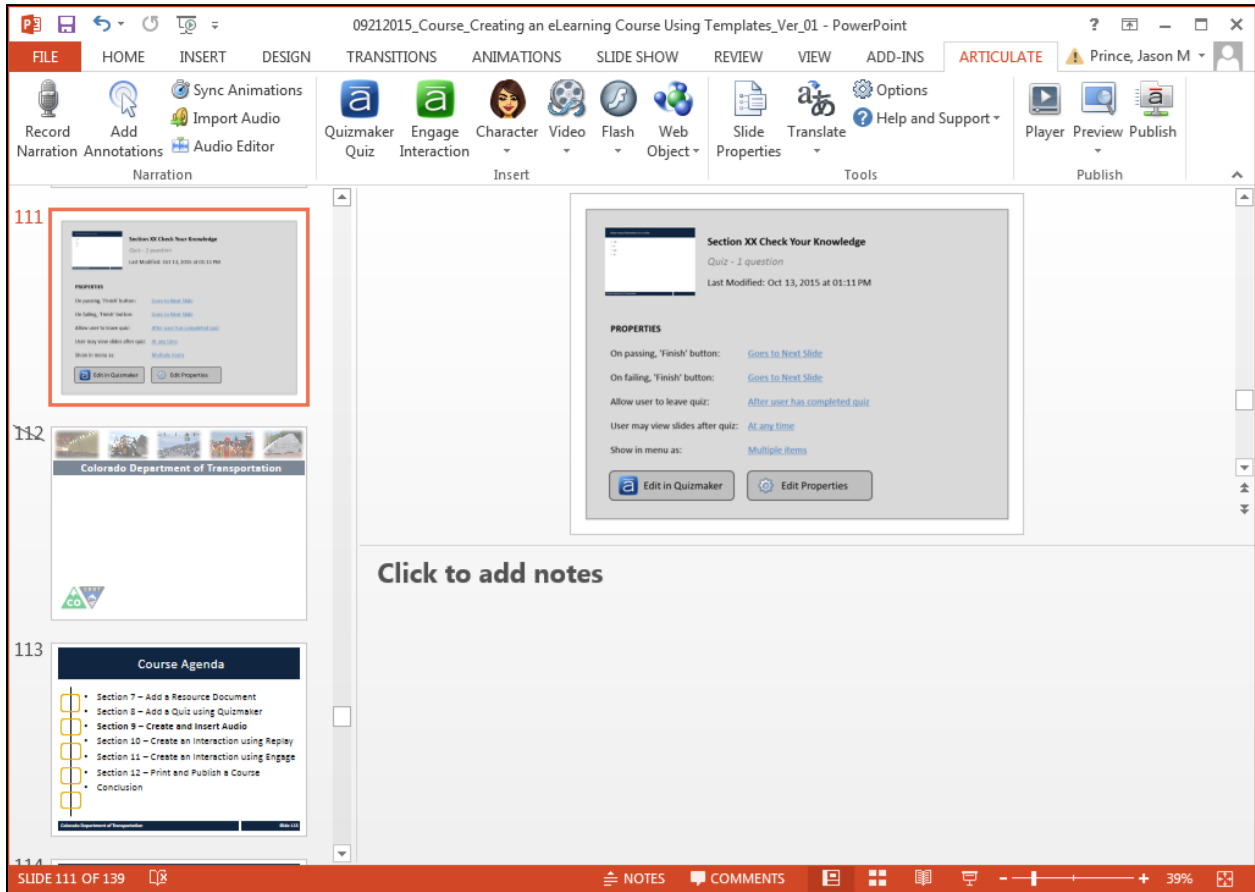
5. Click **Open** button  to import the selected file into your presentation.

Quizzes and Interactions



6. Click **Close** button  to display the quiz you have imported into the presentation.

End of simulation.



The screenshot displays the Articulate Storyline software interface. The title bar reads "09212015_Course_Creating an eLearning Course Using Templates_Ver_01 - PowerPoint". The ribbon includes tabs for FILE, HOME, INSERT, DESIGN, TRANSITIONS, ANIMATIONS, SLIDE SHOW, REVIEW, VIEW, ADD-INS, and ARTICULATE. The ARTICULATE tab is active, showing options for Record Narration, Add Annotations, Sync Animations, Import Audio, Quizmaker, Engage Interaction, Character, Video, Flash, Web Object, Slide Properties, Translate, Options, Help and Support, Player, Preview, and Publish. The main workspace shows a slide titled "Section XX Check Your Knowledge" with a quiz embedded. The quiz properties are visible, including "On passing, 'Finish' button: Goes to Next Slide" and "On failing, 'Finish' button: Goes to Next Slide". The slide navigation pane on the left shows slide 111, 112 (Colorado Department of Transportation), and 113 (Course Agenda). The status bar at the bottom indicates "SLIDE 111 OF 139" and "39%".

7. Review the details of the slide to ensure you have imported the correct quiz.

Result

You have added a quiz to your presentation.

For feedback on this document, please contact dot_SAPSupport@state.co.us.