

## Purpose

Use this procedure to insert an interaction (Quizmaker or Engage) into the presentation.

## Trigger

Perform this procedure when you need to insert an interaction (Quizmaker or Engage) into a presentation.

## Prerequisites

- The template file must be copied and pasted into the project folder, retitled and inserted into the PowerPoint.

## Menu Path

Use the following menu path to begin this transaction:

- N/A

## Transaction Code

Articulate

## Helpful Hints

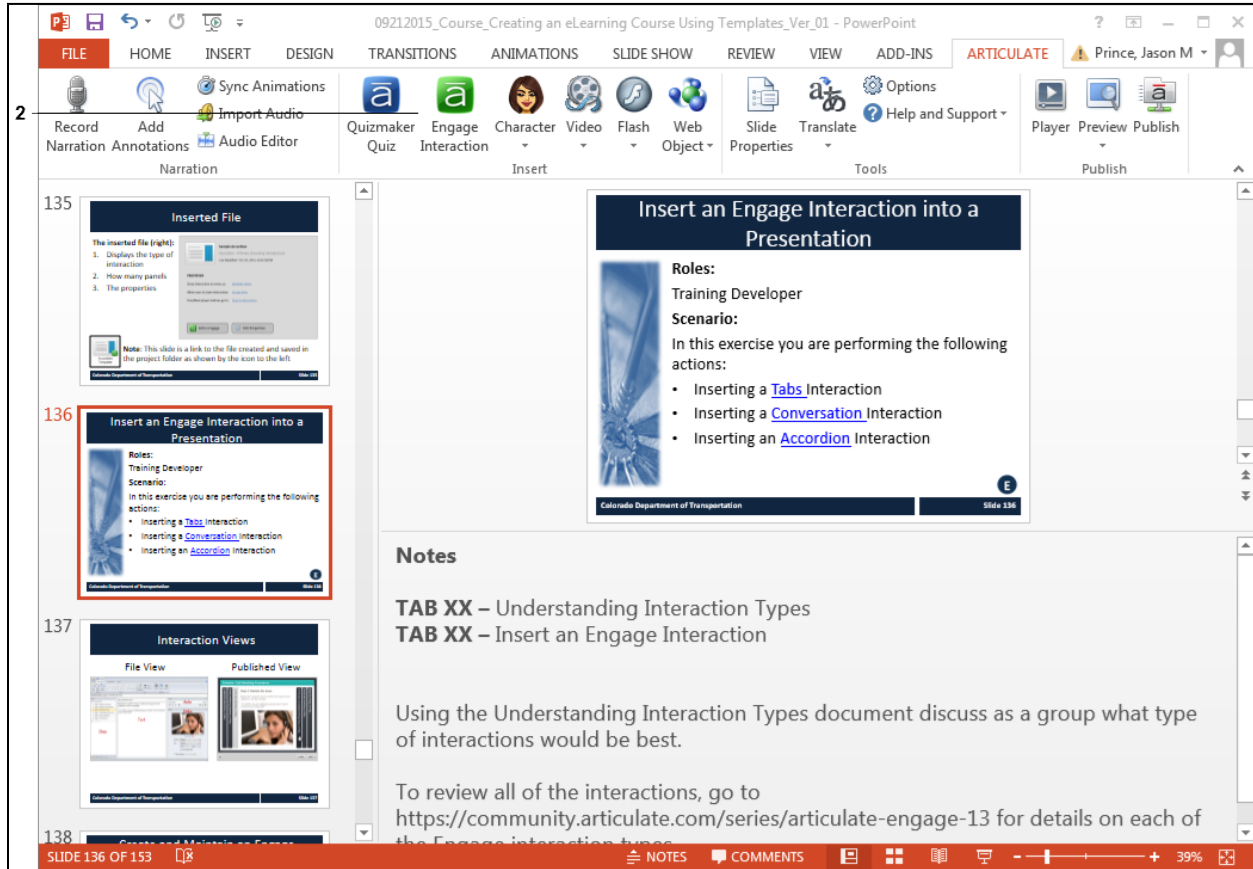
- The file is inserted into the presentation after a selected slide (highlights in orange). If no slide is selected, then the file is displayed at the end of the presentation.
- Always copy and paste the template file into your project folder and rename the file before you insert it into the presentation.
- Engage Interaction icons are always displayed as green
- Quizmaker Quiz icons are always displayed as blue

## Procedure

1. Start the transaction from an open presentation with the Articulate ribbon selected.

### PowerPoint

2



The screenshot shows the Articulate ribbon in PowerPoint. The 'Engage Interaction' button is highlighted with a red box. The slide content includes the following text:

**Insert an Engage Interaction into a Presentation**

**Roles:**  
Training Developer

**Scenario:**  
In this exercise you are performing the following actions:

- Inserting a [Tabs](#) Interaction
- Inserting a [Conversation](#) Interaction
- Inserting an [Accordion](#) Interaction

**Notes**

**TAB XX – Understanding Interaction Types**  
**TAB XX – Insert an Engage Interaction**

Using the Understanding Interaction Types document discuss as a group what type of interactions would be best.

To review all of the interactions, go to <https://community.articulate.com/series/articulate-engage-13> for details on each of the Engage interaction types.



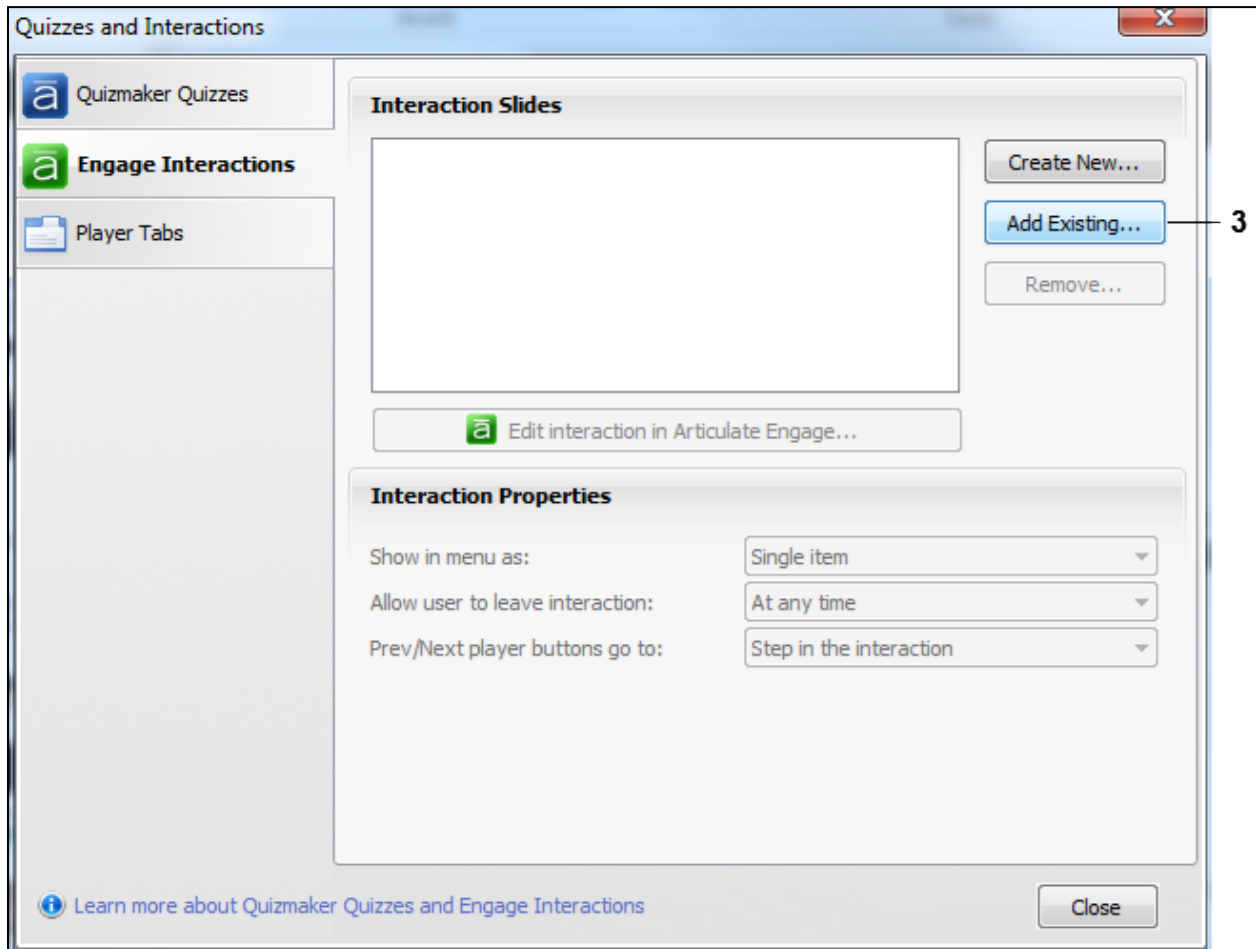
Engage

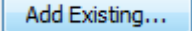
2. Click **Engage Interaction** button **Interaction** . The *Quizzes and Interactions* screen displays.



From the *Quizzes and Interaction* screen, you are able to add a quiz or Engage interaction. In this example, you are creating an Engage Interaction. If you were creating a quiz, you would select this as an option in step two of this instruction.

## Quizzes and Interactions

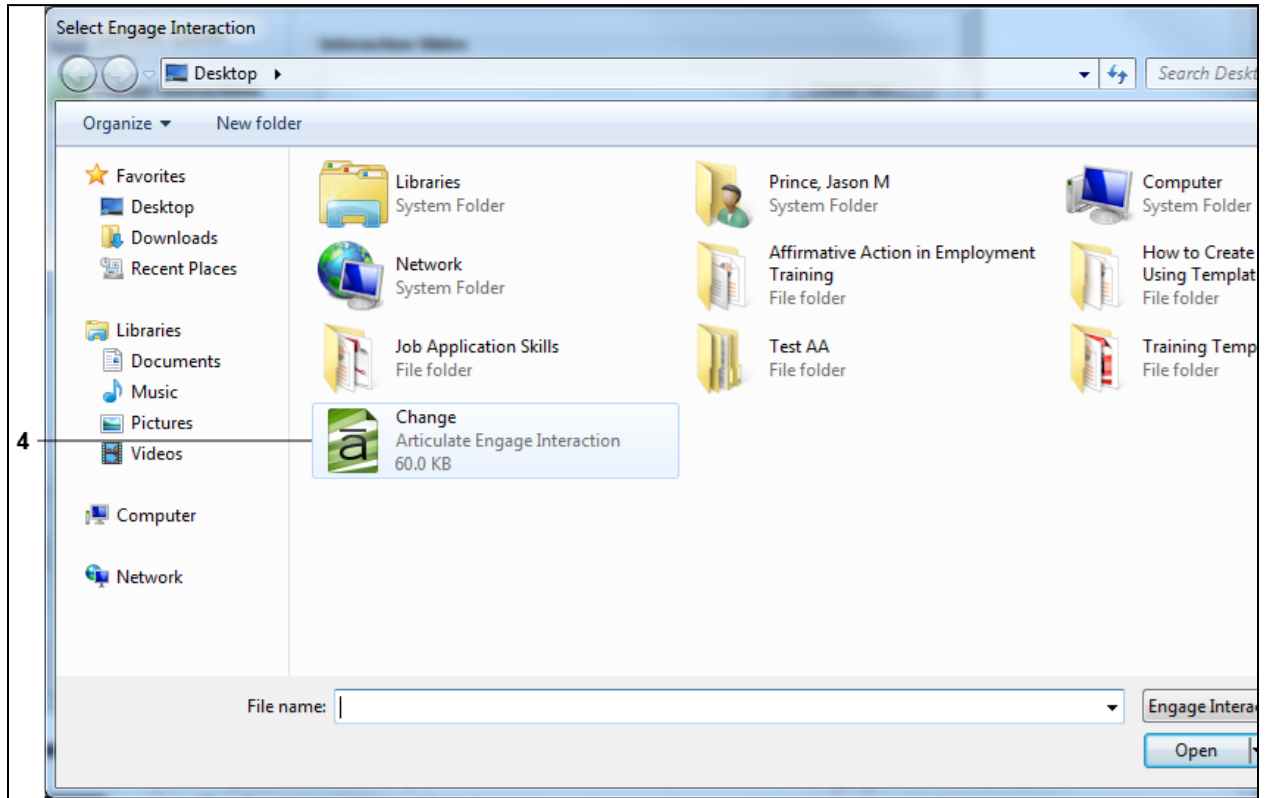


3. Click **Add Existing...** button . The *Select Engage Interaction* screen displays.

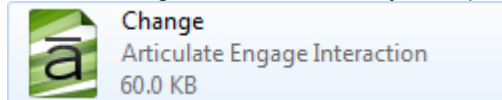


For your convenience, all of the Engage Interactions have been created and saved in the correct style and format. As a result, you are able to use the **Add Existing...** button to create the interaction. The quizzes have also been created and can be added the same way.

## Select Engage Interaction

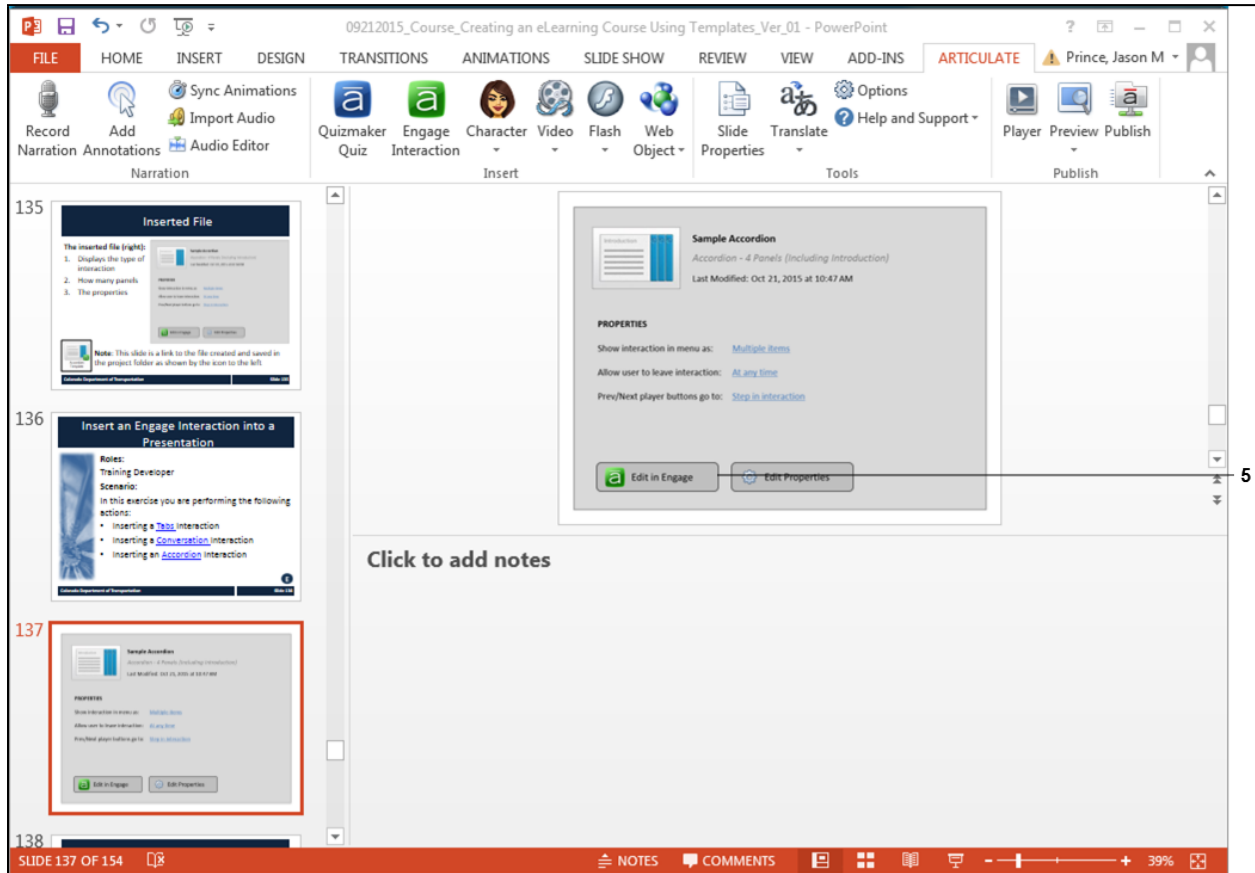


4. Navigate to the location you copied and saved the file and double-click the file



. In this example, the **Change** file was selected.

## PowerPoint

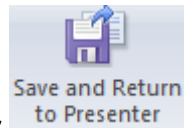
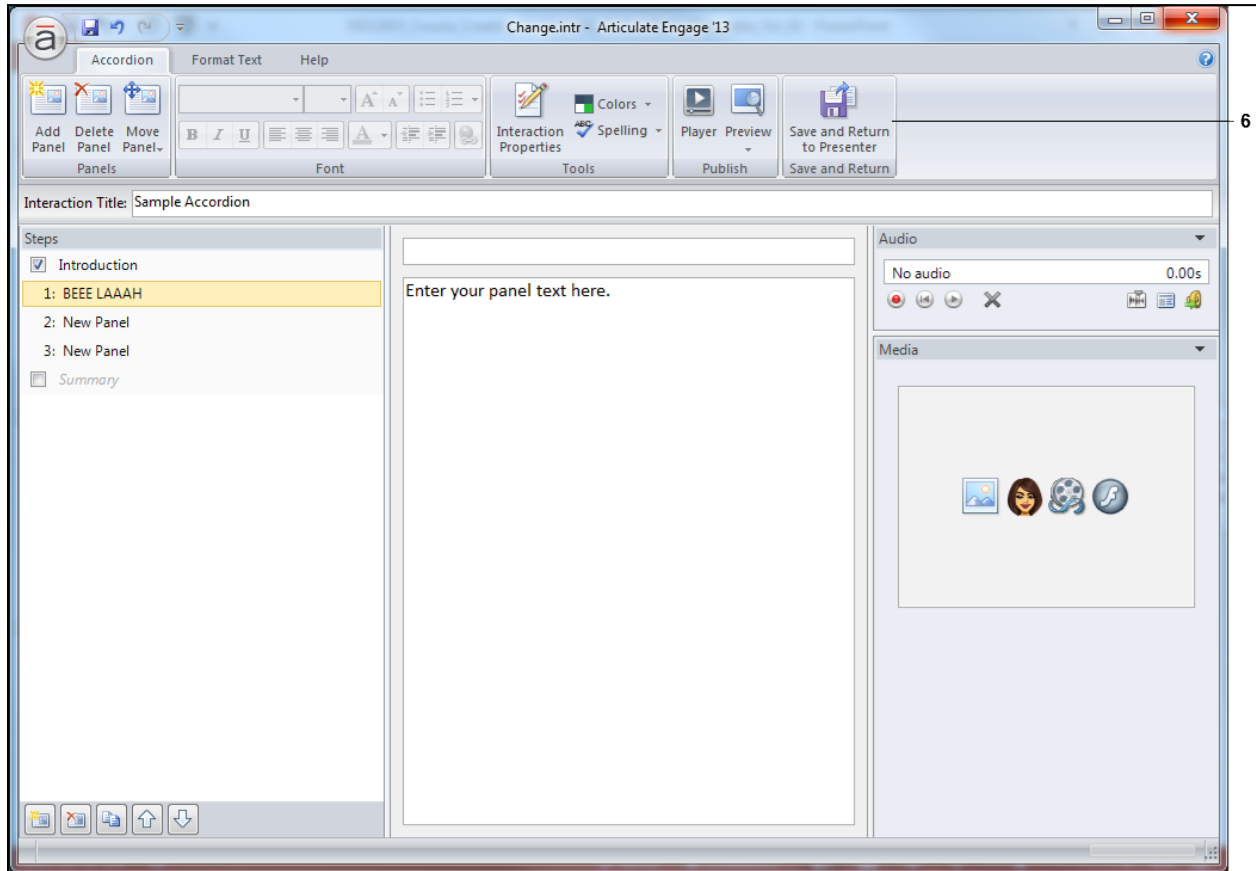


5. Click **Edit in Engage** button  to insert the Engage interaction.



The file you have inserted is now part of you presentation. If you want you could continue with another action or access the file.

## Articulate Engage '13 - [Change.intr]



6. Click **Save and Return to Presenter** once you are done editing the file to save the changes and return to the PowerPoint file.

## Result

You have inserted an interaction (Quizmaker or Engage) into a presentation.