

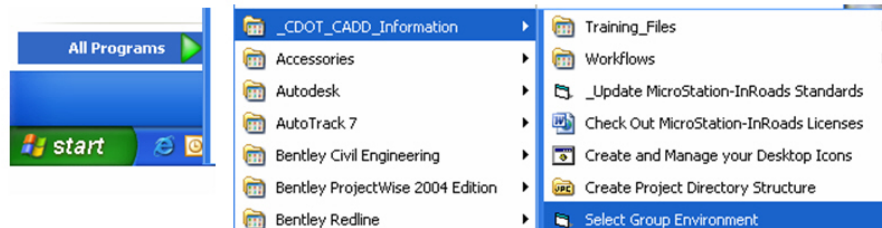
CDOT Typical Section Release Notes



This document explains the basic functions of the CDOT Typical Section Program. This program writes graphical data to the typical section file at a scale of 1:10. All of the graphical properties such as the levels, patterns, text, and cells are set by default to the standard CDOT configuration. Please refer to the *Known Issues* section of the *ReadMe-CDOT Configuration* file for additional information.

Opening the Program

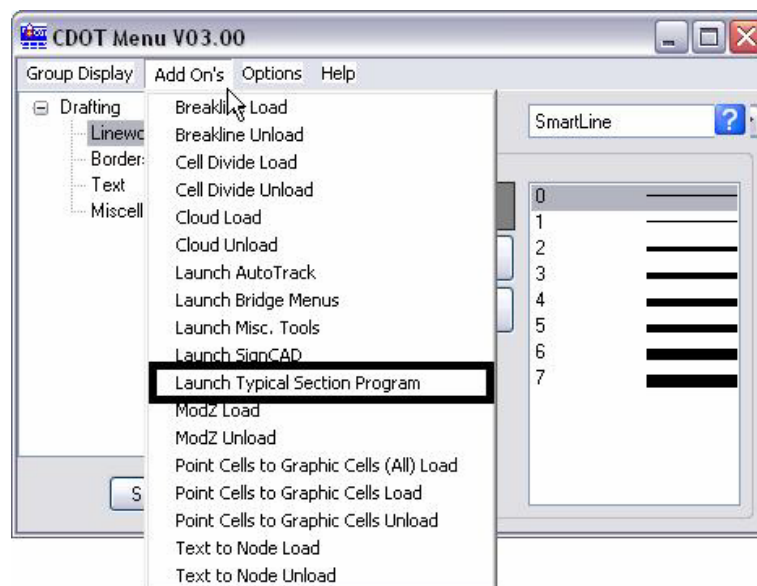
1. If you are running MicroStation through a discipline other than Roadway Design, you will need to run the Select Group Environment program before opening MicroStation. Access this from the Window's Start menu under Start > All Programs > _CDOT_CADD_Information > **Select Group Environment**. Select either Roadway Design or the xxMulti-Discipline group. If this step is not done, the program will not run and you will receive an error in MicroStation because the appropriate levels will not be loaded.



2. Open the file JPC#TypicalSection##.dgn under C:\Project\.....\Design\Drawings\. This file was created when you ran the project creator tool, CreatePrjDir.exe.

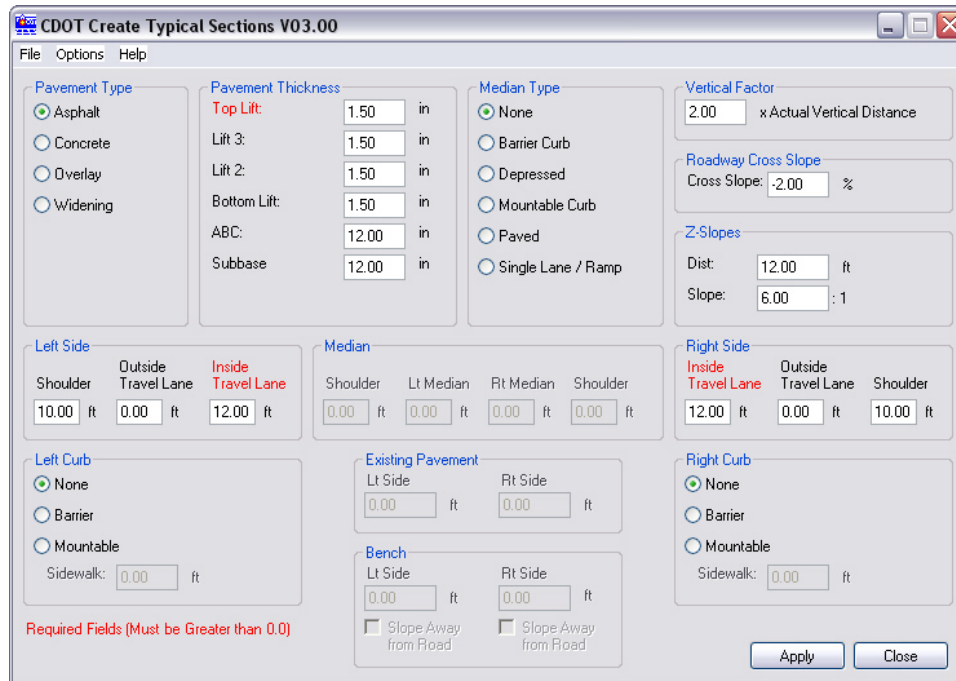
Note: The 5 digit Job Project Code has replaced the 'JPC#' in the filename.

3. Open the **Typical Section Program** from the CDOT Group Menus tool bar in MicroStation Select *Add On's* > *Typical Section Program*.



CDOT Typical Section Release Notes.pdf

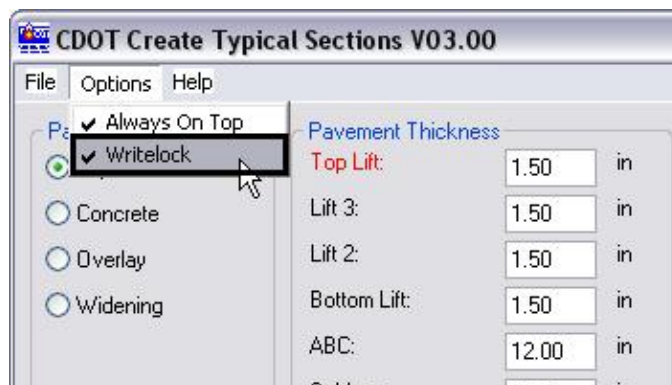
- The **CDOT Typical Section Program** lets the user input different values based on the desired roadway section. The various options are highlighted in blue.



Program Functions and Options

Data Entry and Placing Graphics

- Different options will become available based on the input field. If the text is red, this is a required data field. Gray means the data field is unavailable for input.
- The **Writelock** option controls the graphics in the file. Select **Options > Writelock** to toggle it **On** or **Off**. If **Writelock** is **On**, permanent graphics will be generated in the file. When the **Writelock** toggle is set to **Off**, the graphics are temporary. If you zoom or pan, the graphics will disappear. A checkmark next to Writelock indicates that it is on.



CDOT Typical Section Release Notes.pdf

7. After the **Writelock** option is set, select **Apply** and data click <D> in the file JPC#TypicalSection##.dgn to generate the graphics.

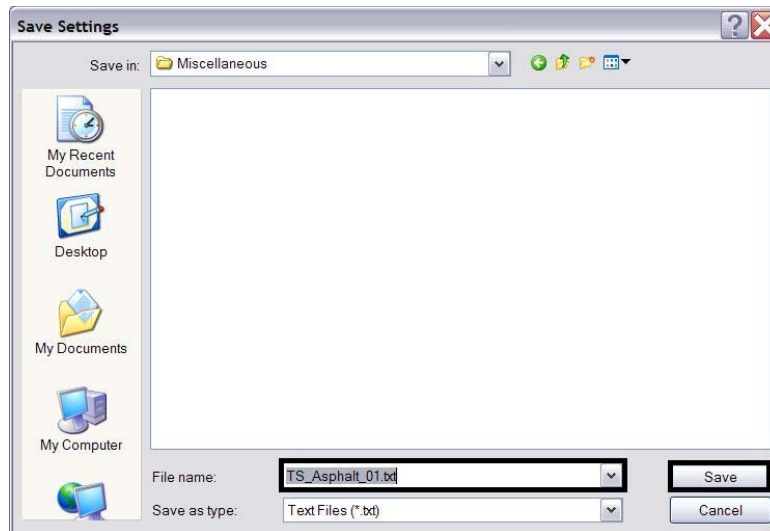
Note: The **Annotation Scale** is set to **1:10** in the model properties by default.

Saving and Opening Settings

8. The data input file can be saved for future use. Select **File > Save**.



9. The file will be saved with a *.txt extension. Browse to the location where the file will be saved. Name the file and select **Save**.

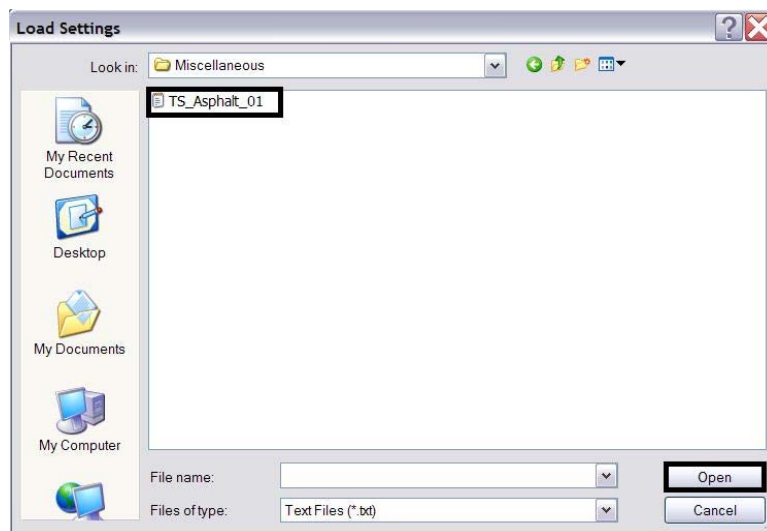


10. To open an existing typical section data input file, select **File > Open**.

CDOT Typical Section Release Notes.pdf



11. Browse to the data input file, highlight it and select **Open**.



Online Help

12. A **Help** menu has been added to the Typical Sections Program. The same options that are found on the CDOT Menu are found here.

