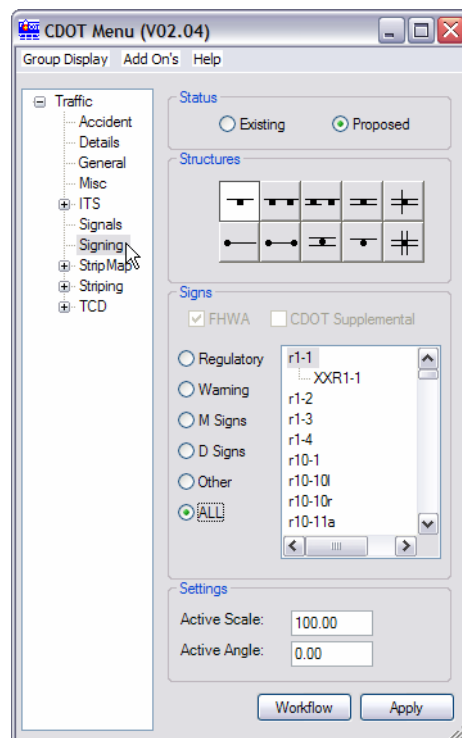


CDOT TRAFFIC SIGNING MENU

This document guides you through the traffic signing workflow on the new CDOT Menu's.

Placing Sign Graphics with CDOT Menu

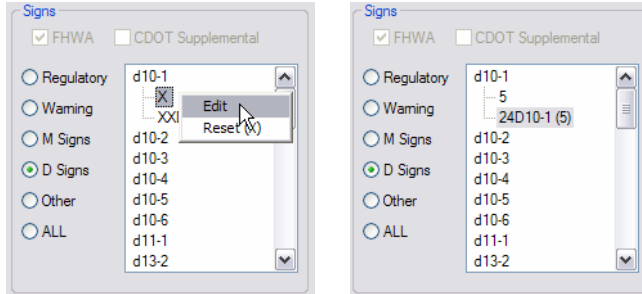
1. Start the CDOT Menu from **Group Menu>Traffic**, or choose Traffic in the **Group Display** of the CDOT Menu. Choose the **Signing** menu item to bring up the sign placement workflow.



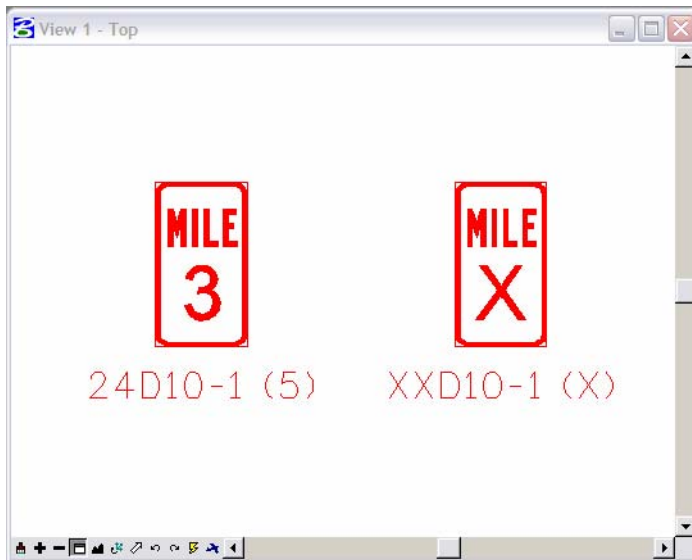
2. First select whether to place an existing or proposed sign.
3. Now select the type of Structure the Sign Panel will be placed on.
4. Finally, select the type of Sign Panel you wish to place from the list box. You have the ability to filter the list of available signs in the Signing Cell Library by selecting the appropriate Radio Button (Regulatory, Warning, etc.).

Note: Currently the CDOT Supplemental signs are not available. Once these signs are available, you will be able to select between FHWA and CDOT Supplemental signs to place.

- The information under the sign code allows you to edit the text within the dialog box prior to placing the cells. You can either select the text to edit, or right-click and select **Edit**.



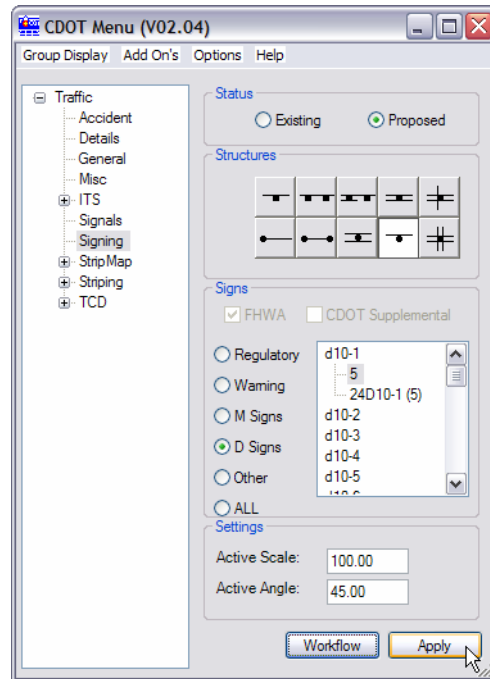
- Below is an example of a sign placed with and without editing the text in the dialog box.



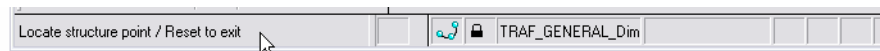
- You can adjust the Active Scale and Active angle in the **Settings** field.

Note: The Active Angle only applies to the Sign Structure cell relative to True North. The Sign Panel will be placed parallel to the MicroStation View rotation.

8. Select **Apply** to begin the command.



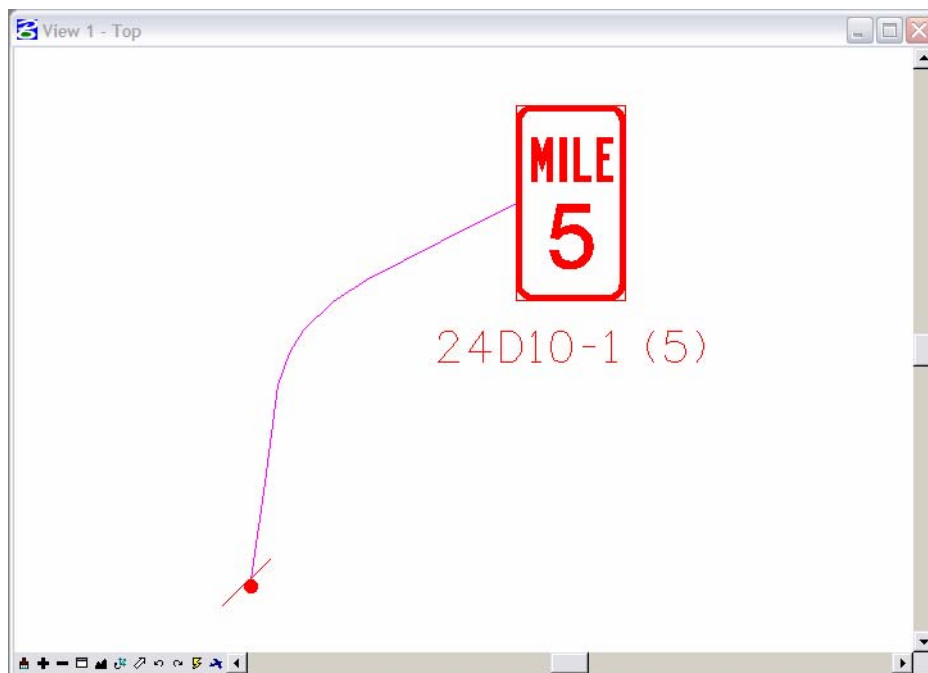
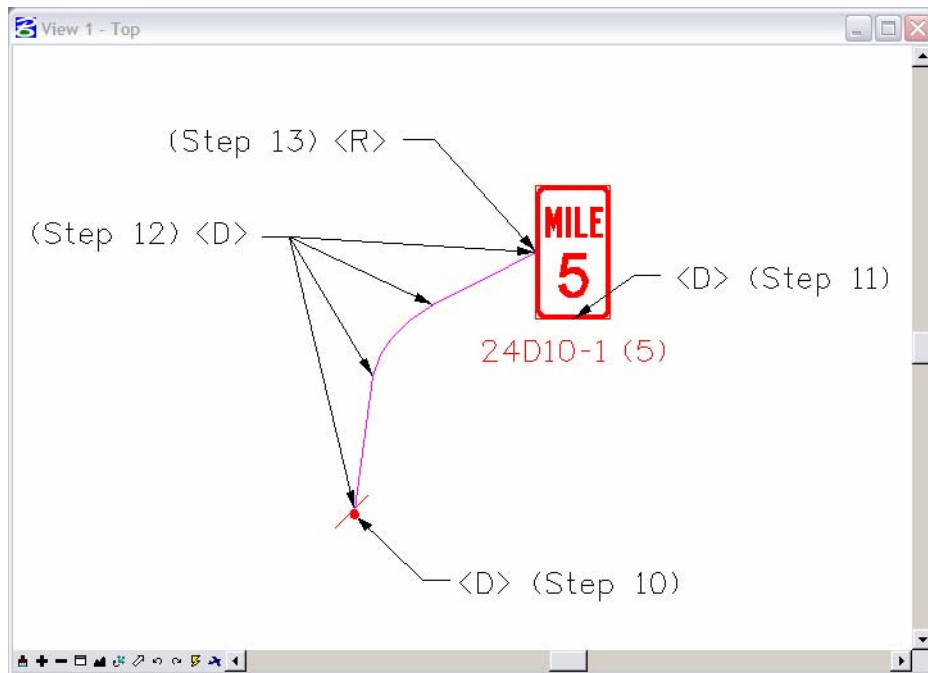
9. The Menu will give control to MicroStation for placing the signs. MicroStation will prompt you at the Command Line portion of the MicroStation window.



Note: To get out of placing sign graphics click **<R>** (Reset).

10. In the MicroStation window, pick a location for the Sign Structure and **<D>** to place the Sign Structure cell. (See below)
11. Pick a location for the Sign Panel and **<D>** to place the Sign Panel cell. (See below)
12. Pick a location on the Sign Structure to begin a curved linestring leader **<D>**, then pick points **<D>** in between and near the Sign Panel to finish the leader. (See below)
13. **<R>** Reset to exit the command and go back to the menu and continue to place other signs. You can select another Sign Panel, or Structure and select **Apply** to place sign

Note: You can select another Sign Panel, or Structure and select **Apply** to place the new graphics. The menu system will remember your last settings.



Note: After placing the sign, you can use MicroStation to edit the Sign Text, reposition the Sign Structure or Sign Panel, or modify the leader line.