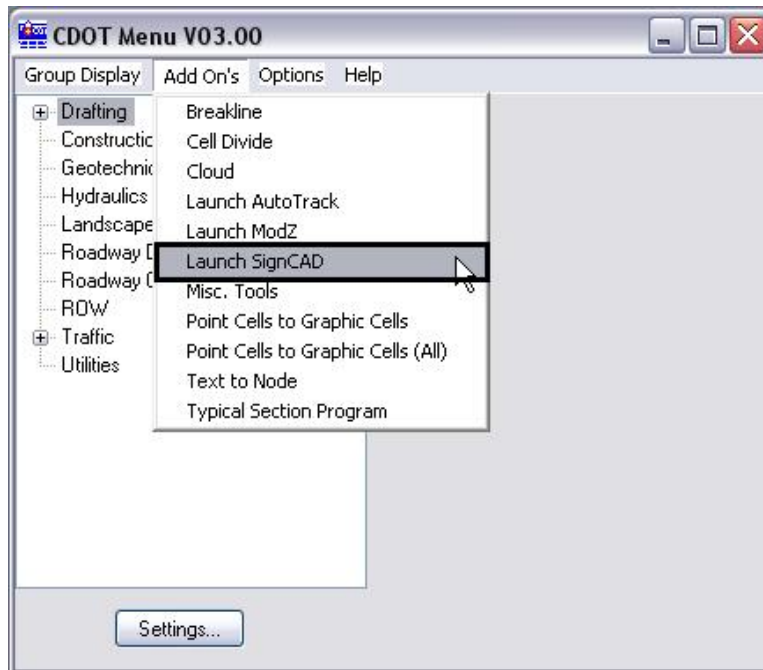


CDOT Placing SignCAD Signs

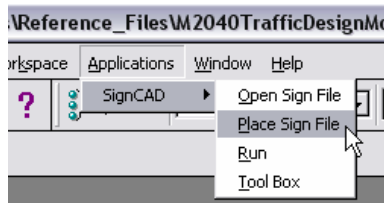


This document guides you through placing Sign graphics created by SignCAD software into MicroStation drawings.

1. Open MicroStation and the file that you will be placing the SignCAD signs in.
2. From the CDOT Menu, Select **Add On's > Launch SignCAD**



3. From the MicroStation Menu, Select **Applications > SignCAD > Place Sign File**

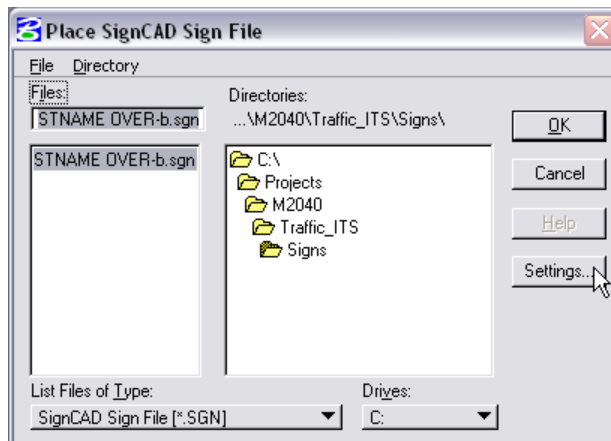


Note: You can also place a sign file from the SignCAD toolbox.

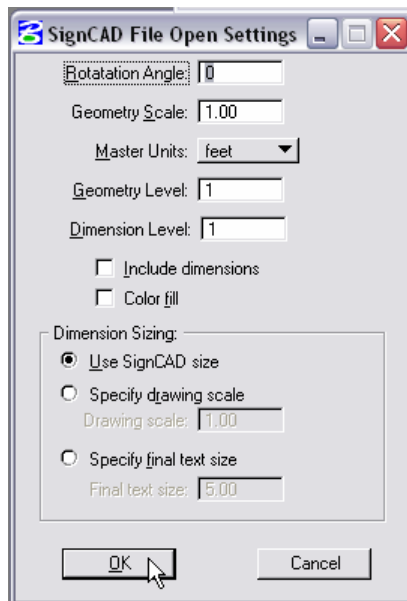


CDOT Placing SignCAD Signs.pdf

4. Browse to the location and select the SignCAD file. Verify the Settings by selecting **Settings...**



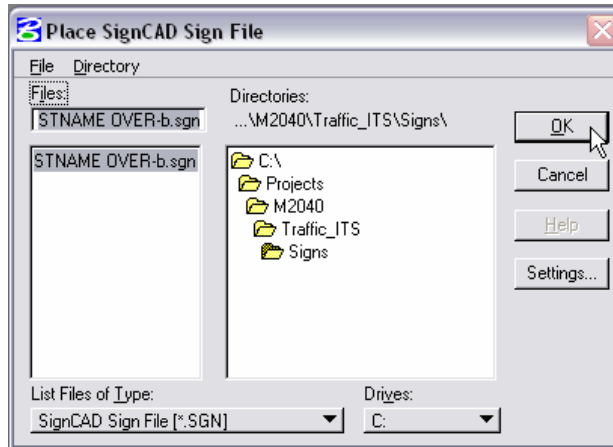
5. Verify the settings and select **OK**.



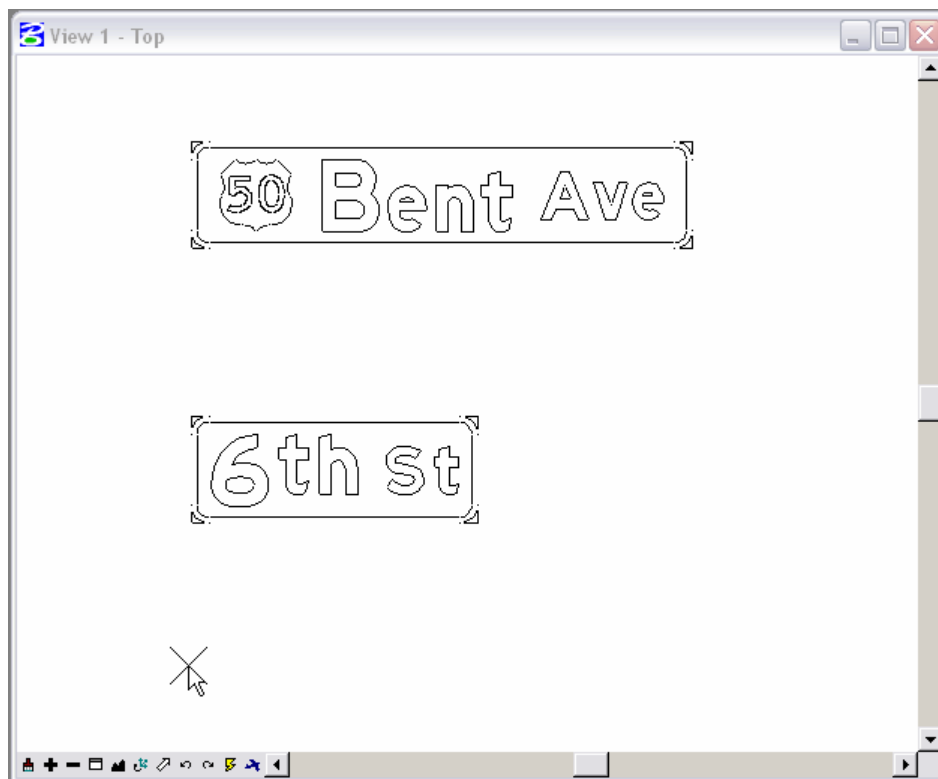
Note: If your MicroStation active scale is 1.0 and feet is selected for your master units, the graphic will come in true scale. You can scale the graphics after you place them to fit your drawing.

CDOT Placing SignCAD Signs.pdf

- To place the file in MicroStation, Select **OK**.



- Select the location within the MicroStation file you would like to place the SignCAD file and <D> (data click) to place the graphics.



CDOT Placing SignCAD Signs.pdf

8. The result is SignCAD graphics placed in your MicroStation File.



Note: SignCAD places the graphics on the Default Level and at an Elevation other than zero (Z=0). You will need to select the graphics and change them to the correct MicroStation level (TRAF_SIGNING_Proposed). You can use the MODIFY Z utility from **Add On's>Launch ModZ** found on the CDOT Group Menu to change the elevation to zero (Z=0).