

# CDOT Roughen

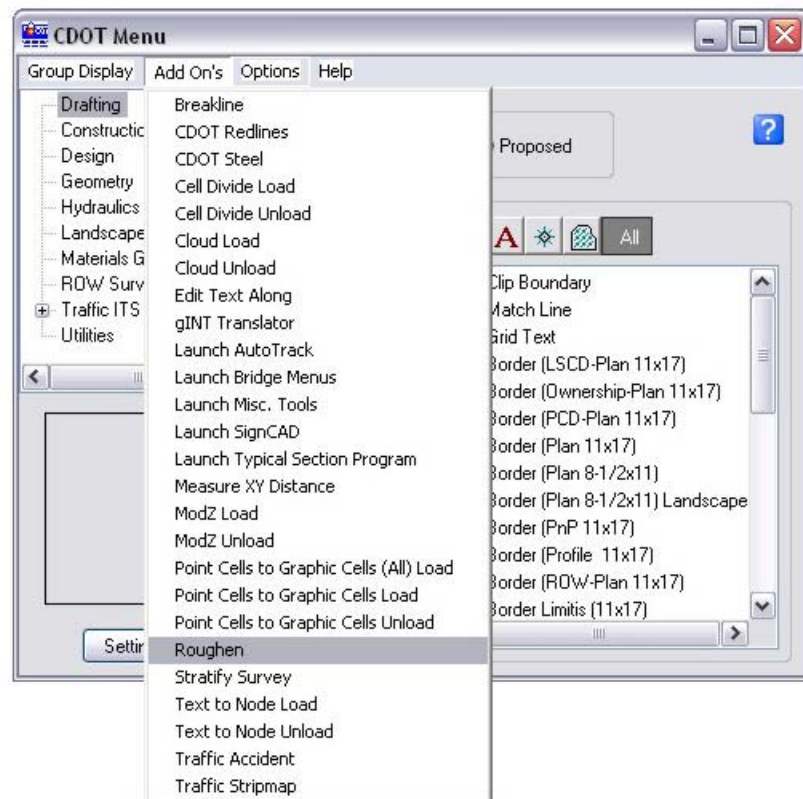


This document guides you through using the Roughen command. This is an update to the previous **Roughen Load** and **Roughen Unload** commands found in the CDOT Menu Add On's. There is now only a single Roughen entry on the CDOT Menu that provides a menu interface for entering the roughen parameters. The Roughen command will also modify arcs, ellipses, and complex elements in addition to simple linestring elements.

## Roughen

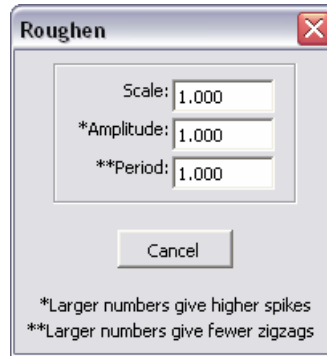
### Launching Roughen

1. From the CDOT Menu, select **Add On's > Roughen**.



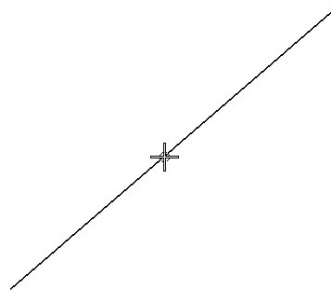
## Using the Roughen command

2. Verify and/or change the settings as desired in the Tool Settings dialog.



As noted in the dialog box, larger numbers for the *Amplitude* setting result in higher spikes. Larger numbers for the *Period* setting will result in fewer zigzags.

3. Select the element that is desired to change.



4. Left click to accept the change.

The element is changed or 'roughened'.

