

# CDOT Right Of Way Property Tab Sheets



This document guides you through the use of the Excel spreadsheet JPC#ROW\_Property\_Tab\_Sheet.xls with the JPC#ROWPropertiesTabSheet##.dgn to create a finished "Tabulation Of Properties" sheet file.

## Using the ROW\_Property\_Tab\_Sheet.xls file:

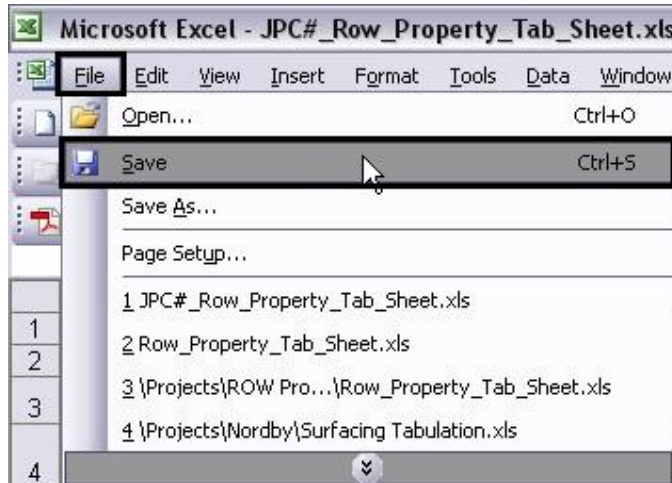
The ROW\_Property\_Tab\_Sheet.xls file is set up to hold data for up to four complete tabulation sheets. This file is protected to maintain the column widths and number of rows. Data entry is allowed in the body of each table only. The illustration below highlights the body of table 1.

Parcel No.	Owner	Address	Location	Area in Square Feet					Book and Page No. And/O Property No.	Title Commitment No.	Remarks
				Area Of Parcel	Starting ROW	Net Area	Remainder Left	Remainder Right			

1. Data is entered beginning in cell 5A.

	A	B	C
1			
2			
3	Parcel No.	Owner	Address
4			
5	555	Ralf Q. Smith	555 Deerborne Rd.
6			
7			
8			
9			
10			
11			
12			

2. After typing in the desired data, press the Tab key to move to the next available cell. This will move the cursor across each row, one cell at a time until the end of the row is reached. A tab at the end of the row will move the cursor to column A of the next row. A tab at the end of a table will move the cursor to the first row and column of the next table.
3. After the desired data is entered select **File > Save**. Do not close the document.

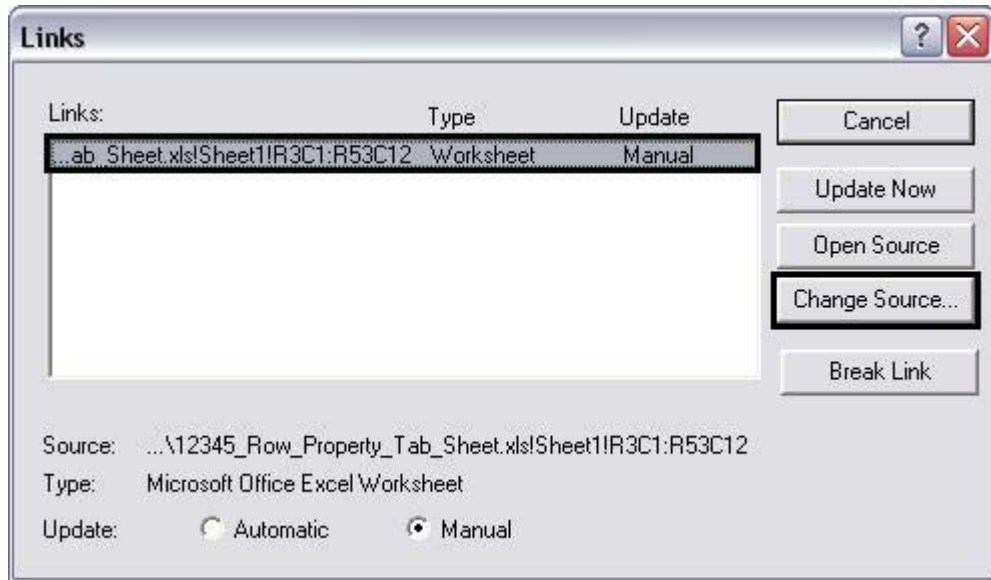


### Updating the Link to the ROW\_Property\_Tab\_Sheet.xls file

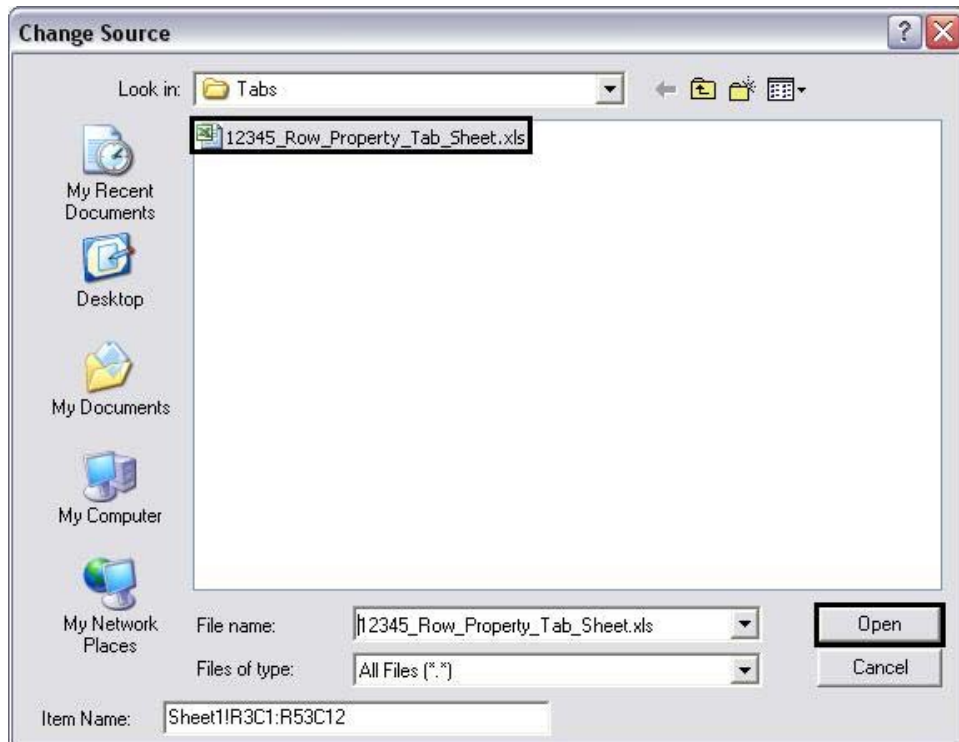
4. Open the JPC#ROWPropertiesTabSheet###dgn in MicroStation.
5. Select **Edit >Links** from the menu. This will display the **Links** dialog box.



6. In The **Links** dialog box, highlight the link to the spreadsheet and select the **Change Source** icon.



7. From the Change Source dialog box, highlight the desired JPC#ROW\_Property\_Tab\_Sheet.xls sheet and select the **Open** icon.



8. Repeat steps 4 through 7 for the other JPC#ROW\_Property\_Tab\_Sheet.xls if needed.

**Editing The ROW\_Property\_Tab\_Sheet.xls file**

9. The Excel file (and thus the MicroStation tab sheet) can be edited from MicroStation by selecting the Element Selector then double clicking (**Data, Data**) on the table. This opens Excel and the linked spreadsheet.
10. Make the desired edit in Excel, **Save** and **Close** the file. The corrections will be updated automatically.

**Note:** If the link to the spreadsheet is lost or additional sheets are required, refer to CDOT Linking MicroStation to Excel Documents.pdf for directions on reestablishing or creating new links.