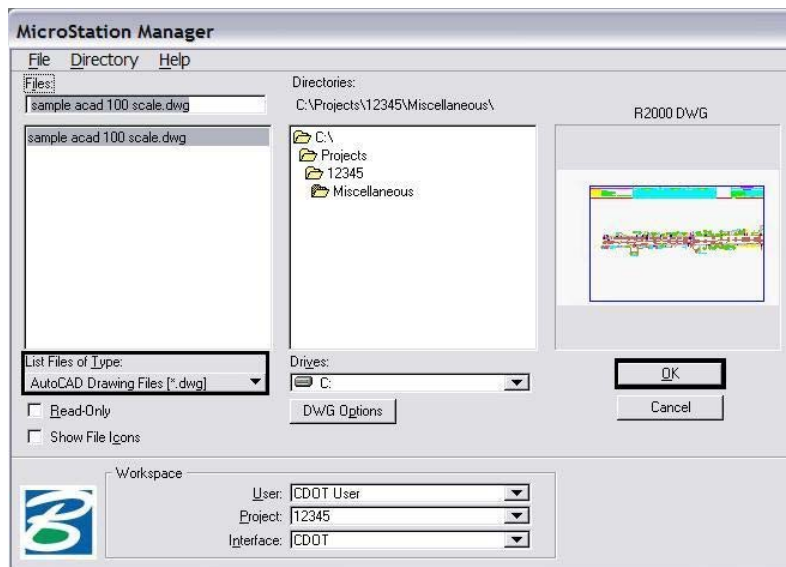


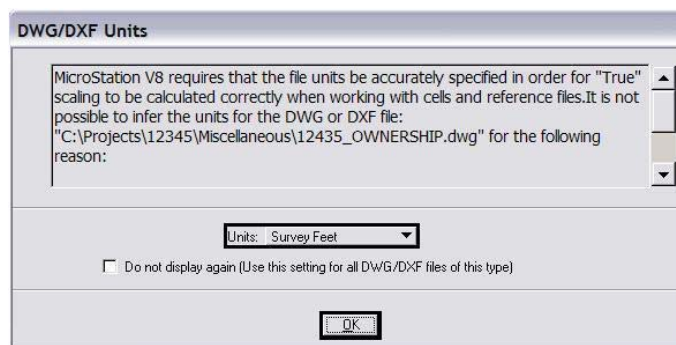
This document guides you through printing AutoCAD files in MicroStation.

## Opening an AutoCAD file in MicroStation

1. From the **MicroStation Manager**, open an AutoCAD (\*.dwg) drawing file. Change **List Files of Type** to **AutoCAD Drawing Files (\*.dwg)** to view AutoCAD files. Select **OK**.

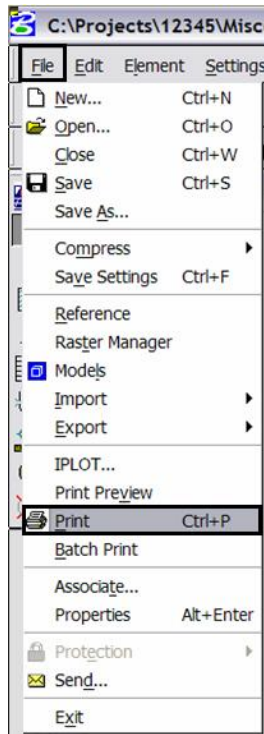


2. The **MicroStation DWG/DXF Units** dialog box will appear. Verify the **Units** are set to **Survey Feet** and select **OK**.



**Note:** If the AutoCAD drawing file contains the **WWW PICS** linestyle then change this to the standard CDOT MicroStation Level called **ROW\_MONUMENT\_City-Limit-Line-Text** and update it to bylevel symbology.

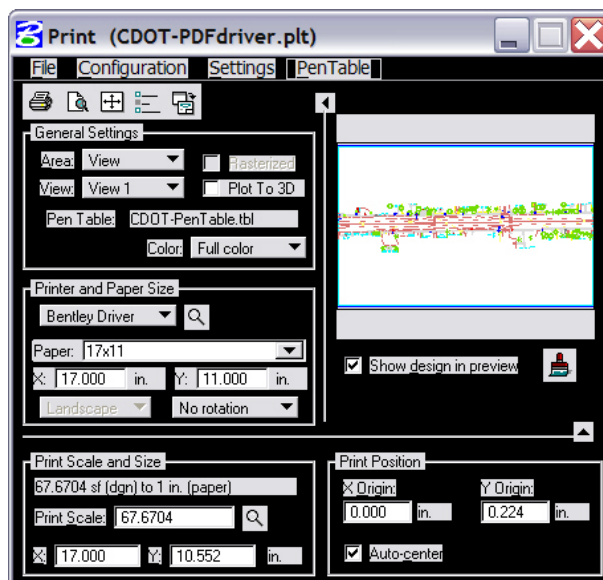
3. Select **File > Print** to open the **Print** dialog box.



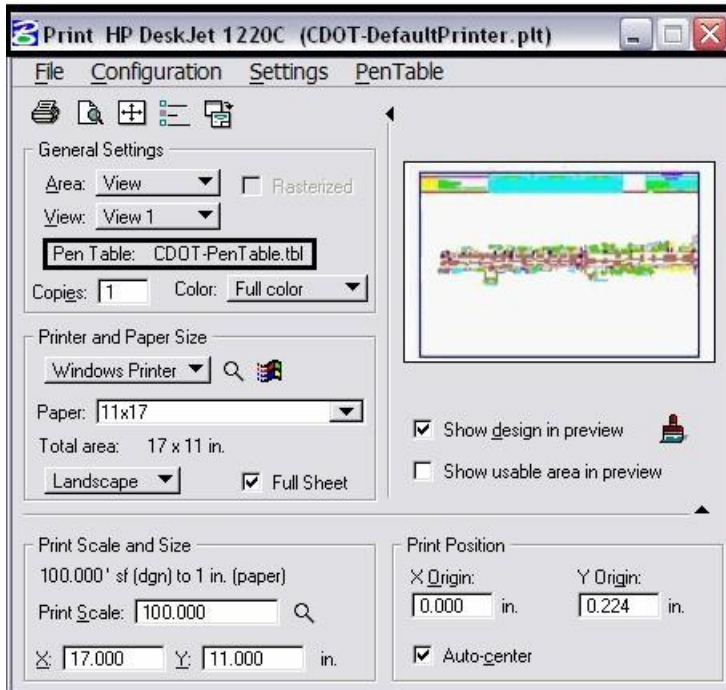
Or select the printer icon on the **Standard Tool Box**.



**Note:** If the print dialog box does not show up or is black when opened, close and reopen it. This will fix the problem.

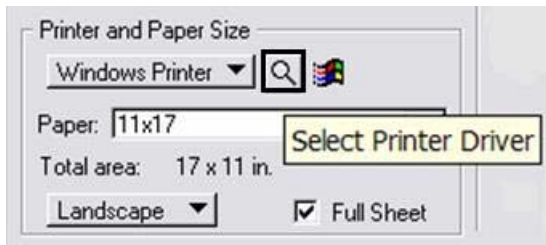


4. The current **Printer Driver** will display in the title bar at the top of the print dialog box and the current **Pen Table** is displayed under the General Settings area.

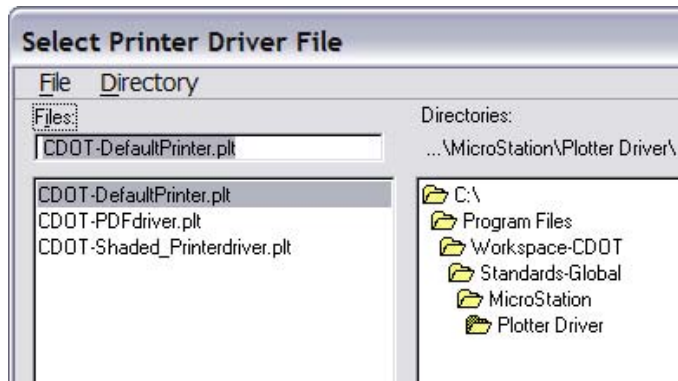


**Note:** If you are printing Sheet Layouts, Print Scale and Size will update automatically. If you are printing from a Model Layout set the scale as desired. For more information or additional printing questions, see the workflow, *CDOT MicroStation Printing*.

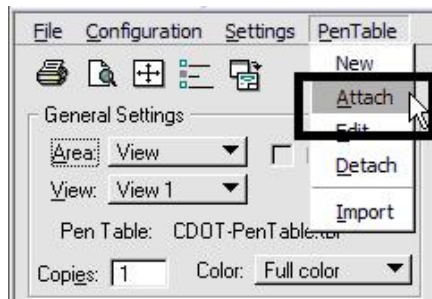
5. The default Printer Driver is **CDOT-DefaultPrinter.plt** and the default Pen Table is **CDOT-PenTable.tbl**. To change the **Printer Driver**, select the magnifying glass located under Printer and Paper Size.



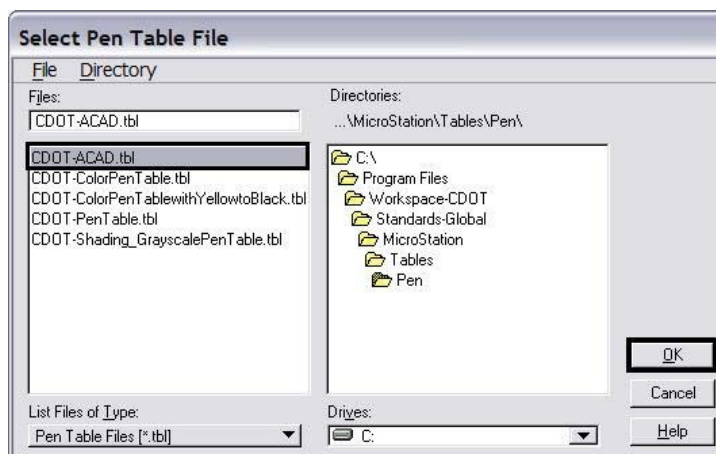
- Three printer drivers are available. *CDOT-PDFdriver.plt* should be used for the creation of Adobe PDF files and *CDOT-DefaultPrinter.plt* should be used to send plots to the default printer. *CDOT-Shaded\_Printerdriver.plt* is for printing MicroStation files only.




- For printing AutoCAD files, change the **Pen Table**. Select **Pen Table > Attach** from the pull-down menu.



- Select the *CDOT\_ACAD.tbl* Pen Table. The other options are for printing MicroStation Files only. Select **OK**.



**Note:** The *CDOT-ACAD.tbl* includes the standard colors and pen weights represented in the CDOT Design Manual - Volume IV, Section 6.2.8. If the standard colors were not used, the printout will contain actual colors or a grey scale representation of that color. If this is the case, to get a correct print, the user must update the file to match the CDOT Design Manual

9. Once everything has been set, select the print  icon. This will send your plot to the designated printer.
10. If you selected the CDOT-PDFdriver.plt as the printer driver to create an Adobe PDF file, you will be prompted to define a file name and a location to save the PDF file.

