

STATE OF COLORADO



DEPARTMENT OF TRANSPORTATION
Contracts and Market Analysis Branch
4201 East Arkansas Avenue, 4th Floor
Denver, Colorado 80222
(303) 757-9736

April-June 2011

COLORADO CONSTRUCTION COST INDEX REPORT Calendar Year 2011 Second Quarter

Prepared by
Gus Bieber
Engineering Estimates and Market Analysis Unit of
Contracts and Market Analysis Branch

Prepared for
Tim Harris, Chief Engineer

STATE OF COLORADO



DEPARTMENT OF TRANSPORTATION
Contracts and Market Analysis Branch
4201 East Arkansas Avenue, 4th Floor
Denver, Colorado 80222
(303) 757-9736

SUMMARY

CONSTRUCTION COST INDEX FOR SELECTED HIGHWAY CONSTRUCTION ITEMS

2nd QUARTER ENDING June 30, 2011

Index for this quarter.....	274.3
Index for last quarter.....	255.4
Point change from last quarter.....	18.9
Percentage change from last quarter.....	7.4%
Index for same quarter of last year.....	236.7
Point change from same quarter last year.....	37.6
Percentage change from this quarter last year.....	15.9%
4-quarter moving average.....	266.3

Average number of bidders this quarter.....	4.89
Change in number of bidders from last quarter.....	-9.1%

NOTE: All information shown in this publication was assembled using 1987 as the base year.

Summary Report for all the projects awarded betwee 4/1/2011 And 6/30/2011

<i>Project Amount</i>	<i>No. of Projects</i>	<i>No. of Bidders</i>	<i>Total Contract Amt.</i>	<i>Avg. # of Bids</i>
<i>\$0.00 to \$49,999.99</i>	0			
<i>\$50,000.00 to \$99,999.99</i>	0			
<i>\$100,000.00 to \$249,999.99</i>	5	17	\$1,009,378.55	3.4
<i>\$250,000.00 to \$499,999.99</i>	8	38	\$3,243,664.68	4.8
<i>\$500,000.00 to \$999,999.99</i>	5	20	\$3,886,953.54	4.0
<i>1,000,000.00 to \$2,499,999.99</i>	9	56	\$15,537,731.11	6.2
<i>2,500,000.00 to \$4,999,999.99</i>	10	43	\$37,570,222.73	4.3
<i>5,000,000.00 to \$9,999,999.99</i>	5	26	\$34,145,868.63	5.2
<i>10,000,000.00 to \$19,999,999.99</i>	4	25	\$49,521,810.87	6.3
<i>20,000,000.00 to \$49,499,999.99</i>	0			
<i>50,000,000.00 or Greater</i>	0			

Total	46	225	\$144,915,630.11
--------------	-----------	------------	-------------------------

The number of bidders on all projects awards during this period averaged **4.89** bidders per contract.
 Average cost per project is **\$2,367,238.24** (avg. cci 1994=118.8 / avg. cci 1998 =158.1) in 1994 dollars.

CCI ITEMS USED FROM 4/1/2011 TO 6/30/2011

ITEM CODE	# OF ITEM	QUANTITY	PRICE	UNIT PRICE	INDEX
203-00000 To 203-00060 203-00062 To 203-00210 203-00400 To 203-00500 203-01020 To 203-01030 209-00000 To 209-00050	132	English (CY) 2,238,828.00	\$16,497,258.00	\$7.37	
	0	Metric (CM) 0.00	\$0.00	\$0.00	
UNCLASSIFIED EXCAV (CIP)	132	2,238,828.00^{CY}	\$16,497,258.00	\$7.37	298.2
403-00720, 403-01000, 403-01010, 403-02000, 403-09121 To 403-09500 403-31300 To 403 36447 403-91401 To 403-95353 411-03100 To 411-03355 411-10010 To 411-90010 (Gal/Lit) Gallon & Liter are converted to Ton	330	English (TON) 1,347,474.41	\$94,171,884.03	\$69.89	
	0	Metric (MT) 0.00	\$0.00	\$0.00	
HOT MIX ASPHALT (H A)	330	1,347,474.41 T	\$94,171,884.03	\$69.89	302.2
412-00000 To 412-00050 412-00700 To 412-01352 412-03000 To 412-03000	42	English (SY) 347,593.89	\$14,410,201.77	\$41.46	
	0	Metric (SM) 0.00	\$0.00	\$0.00	
CONCRETE PAVEMENT (9")	42	347,593.89^{SY}	\$14,410,201.77	\$41.46	310.3
SURFACING TOTAL INDEX					302.5
509-00000 To 509-00000	0	English (LB) 0.00	\$0.00	\$0.00	
	0	Metric (KG) 0.00	\$0.00	\$0.00	
STRUCTURAL STEEL	0	0.00^{LB}	\$0.00	\$0.00	0.0
601-01022 To 601-01022 601-01030 To 601-01060 601-03030 To 601-05064	66	English (CY) 56,682.30	\$23,749,930.38	\$419.00	
	0	Metric (CM) 0.00	\$0.00	\$0.00	
STRUCTURAL CONCRETE	66	56,682.30^{CY}	\$23,749,930.38	\$419.00	192.8
602-00000 To 602-00000 602-00020 To 602-00020	63	English (LB) 9,630,078.00	\$8,021,588.52	\$0.83	
	0	Metric (KG) 0.00	\$0.00	\$0.00	
REINFORCING STEEL	63	9,630,078.00^{LB}	\$8,021,588.52	\$0.83	203.2

STRUCTURAL TOTAL INDEX 195.3

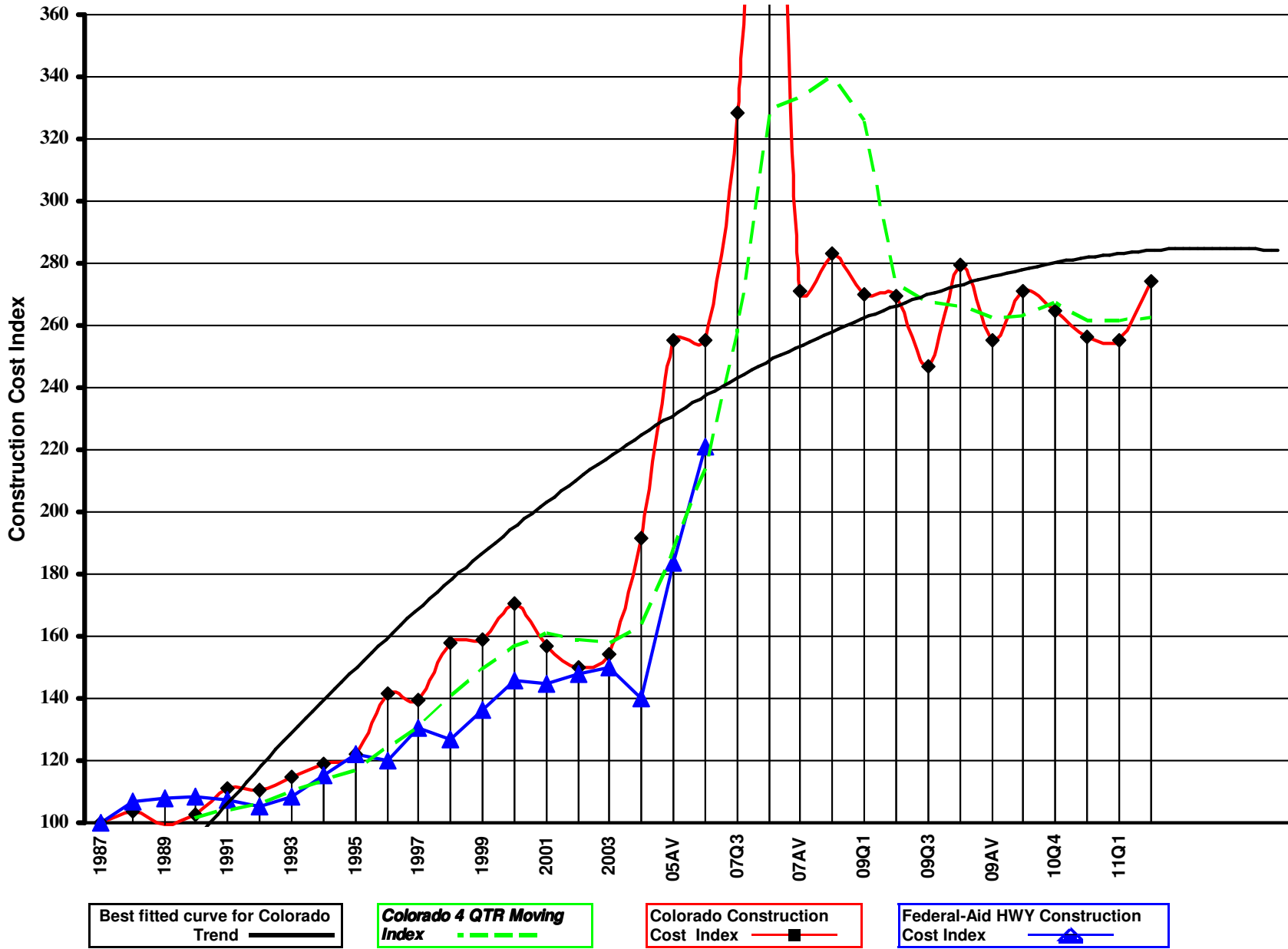
COMPOSITE INDEX = 274.3

Sum of the 6 categories cost = \$156,850,862.70

HBP Unit Price per CY = \$138.38

Concrete Pavement Unit Price per CY = \$165.83

Colorado Highway Construction Cost Index Graph and Tabulations (1987 Base Year)

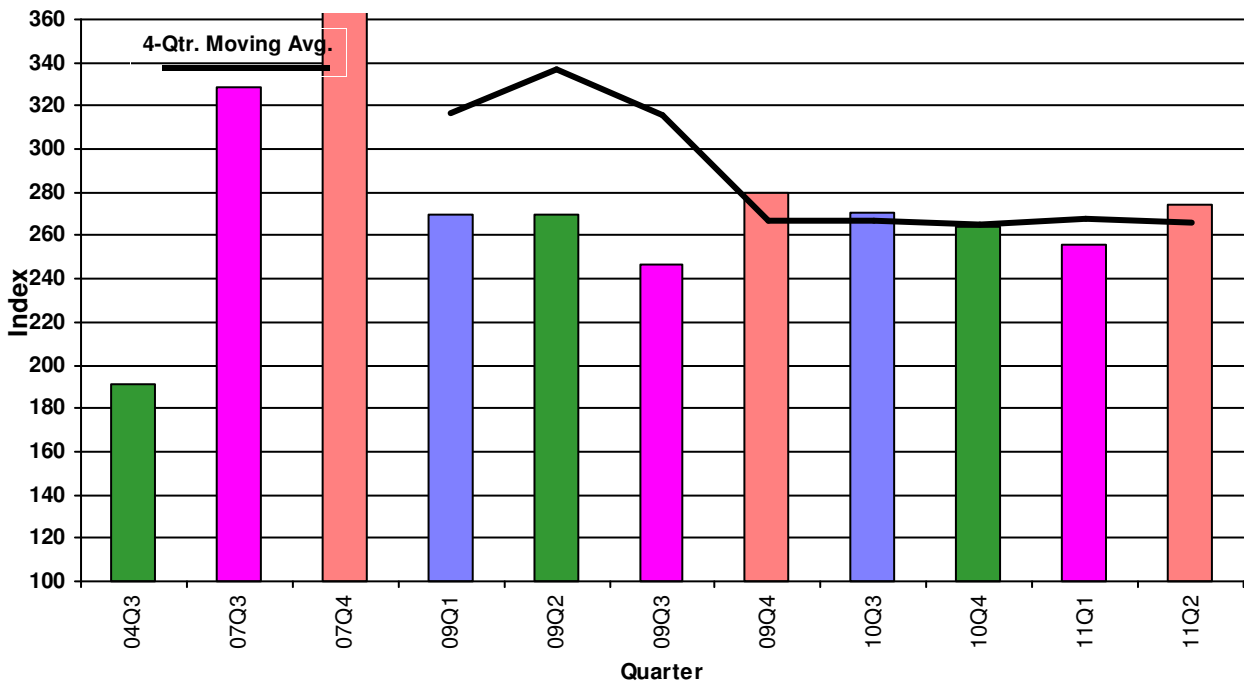
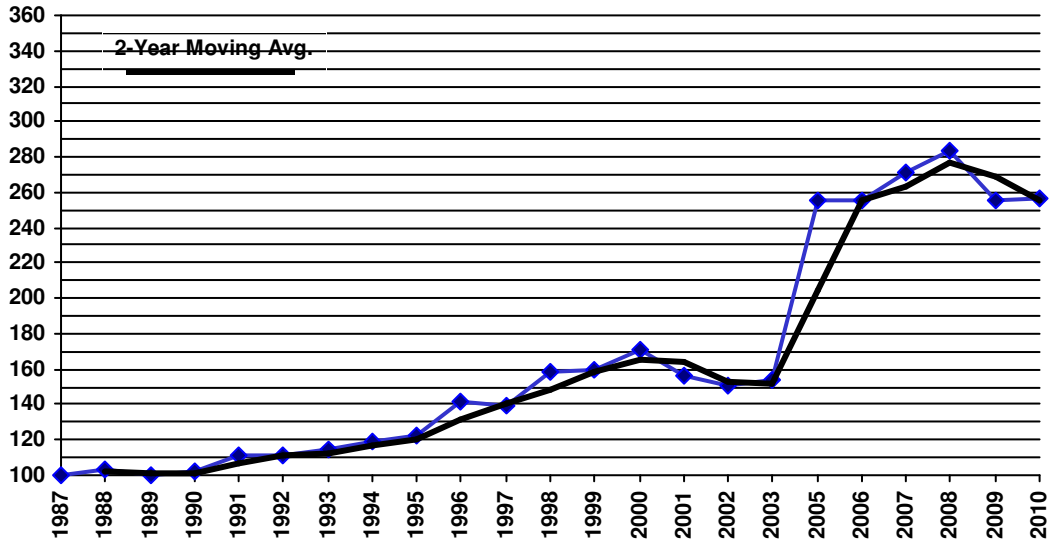


YEAR	QTR.	Earthwork		Asph. Pavement		Concrete Pavement		Surfacing Index	Structural Concrete		Reinforcing Steel		Structural Steel		Structural Index	Composite Index
		Bid Price	Index	Bid Price	Index	Bid Price	Index		Bid Price	Index	Bid Price	Index	Bid Price	Index		
1987	1987	\$2.47	100.0	\$23.17	100.0	\$13.36	100.0	100.0	\$217.32	100.0	\$0.41	100.0	\$0.85	100.0	100.0	100.0
1988	1988	\$2.92	118.1	\$23.88	103.0	\$13.84	103.6	103.1	\$195.02	89.7	\$0.45	110.7	\$0.89	104.1	96.7	103.7
1989	1989	\$2.57	103.9	\$23.67	102.2	\$11.65	87.2	100.6	\$199.41	91.8	\$0.40	97.8	\$0.88	103.5	95.3	99.6
1990	1990	\$2.78	112.5	\$23.98	103.5	\$15.09	113.0	104.5	\$190.86	87.8	\$0.37	90.8	\$0.99	116.0	94.1	102.7
1991	1991	\$3.31	133.8	\$26.25	113.3	\$16.03	120.0	114.0	\$195.43	89.9	\$0.38	93.1	\$0.89	104.4	93.5	111.2
1992	1992	\$2.77	112.3	\$26.20	113.1	\$23.82	178.3	119.8	\$216.87	99.8	\$0.36	87.9	\$0.71	82.8	94.0	110.7
1993	1993	\$3.25	131.4	\$27.74	119.7	\$16.75	125.4	121.3	\$212.43	97.7	\$0.37	90.1	\$0.79	93.0	95.3	114.7
1994	1994	\$3.56	144.2	\$28.40	122.6	\$18.78	140.6	124.4	\$219.94	101.2	\$0.37	89.7	\$0.67	78.8	94.4	118.8
1995	1995	\$3.41	138.1	\$30.25	130.5	\$17.82	133.4	130.8	\$211.29	97.2	\$0.39	94.0	\$0.90	105.5	98.3	122.3
1996	1996	\$4.46	180.5	\$32.73	141.3	\$19.22	143.9	141.5	\$265.98	122.4	\$0.43	105.1	\$1.09	128.5	120.2	141.7
1997	1997	\$4.24	171.7	\$32.92	142.1	\$21.39	160.1	143.9	\$246.29	113.3	\$0.45	110.8	\$1.01	117.9	113.8	139.6
1998	1998	\$4.89	198.0	\$35.72	154.2	\$26.54	198.7	158.7	\$283.01	130.2	\$0.50	122.0	(\$1.00)	-1.0	128.2	158.1
1999	1999	\$4.94	199.8	\$35.23	152.0	\$22.78	170.5	153.9	\$310.56	142.9	\$0.54	132.0	\$1.41	165.3	145.3	159.2
2000	2000	\$5.25	212.6	\$40.02	173.0	\$20.56	153.9	170.8	\$346.82	159.6	\$0.47	115.2	\$1.18	138.8	146.8	170.7
2001	2001	\$4.19	169.5	\$38.67	167.4	\$17.45	130.6	163.2	\$303.22	139.5	\$0.50	120.9	\$1.29	151.5	138.4	156.8
2002	2002	\$3.74	151.2	\$37.99	164.7	\$24.81	185.7	166.2	\$285.35	131.3	\$0.50	121.3	\$0.78	91.9	121.4	150.1
2003	2003	\$4.42	178.9	\$38.23	165.7	\$20.91	156.6	164.1	\$289.44	133.2	\$0.55	133.4	\$0.72	84.7	123.4	154.4
2004	04Q3	\$4.38	177.1	\$43.33	188.0	\$27.59	206.5	189.0	\$350.71	161.4	\$0.91	221.3	\$2.70	316.3	204.4	191.6
2005	05AV	\$12.90	522.0	\$44.17	191.8	\$30.69	229.8	194.7	\$508.77	234.1	\$0.96	232.9	\$1.01	118.4	210.4	255.2
2006	06AV	\$7.54	305.1	\$59.61	258.4	\$33.79	253.0	256.8	\$430.27	198.0	\$0.92	223.5	\$2.62	306.9	225.1	255.5
2007	07Q3	\$10.32	417.6	\$81.60	352.9	\$28.59	214.0	338.0	\$588.03	270.6	\$1.06	258.9	\$2.00	234.4	261.0	328.3
2007	07Q4	\$17.76	719.0	\$103.64	448.2	\$98.13	734.6	476.8	\$563.39	259.3	\$1.02	249.2	\$5.90	691.1	345.1	478.4
2007	07AV	\$7.18	290.5	\$66.58	287.9	\$37.76	282.7	286.9	\$546.29	251.4	\$1.01	245.7	\$1.40	163.6	232.4	271.1
2008	08AV	\$9.04	365.7	\$69.72	302.2	\$29.93	224.1	293.0	\$467.51	215.1	\$1.05	255.8	\$1.65	193.6	218.6	283.0
2009	09Q1	\$5.87	237.5	\$67.74	292.9	\$78.51	587.7	322.7	\$425.40	195.8	\$0.85	207.2	\$1.55	181.7	195.1	269.8
2009	09Q2	\$7.91	320.1	\$65.25	282.2	\$37.17	278.3	281.3	\$379.98	174.9	\$0.70	169.7	\$3.46	405.9	220.8	269.7
2009	09Q3	\$6.11	247.5	\$62.94	272.0	\$31.44	235.4	267.9	\$450.29	207.2	\$0.90	218.9	\$1.77	207.8	209.6	246.8
2009	09Q4	\$6.13	248.1	\$77.79	336.4	\$38.79	290.4	331.1	\$352.16	162.1	\$0.54	132.7	\$3.50	410.2	206.8	279.5
2009	09AV	\$6.63	268.3	\$66.49	287.5	\$44.12	330.2	291.4	\$399.34	183.8	\$0.75	183.8	\$1.58	185.5	184.1	255.1
2010	10Q3	\$9.30	376.3	\$59.49	257.1	\$48.22	361.0	267.4	\$428.29	197.1	\$0.91	222.9	\$0.00	0.0	203.3	270.8
2010	10Q4	\$8.52	344.7	\$64.69	279.6	\$32.63	244.3	275.6	\$395.91	182.2	\$0.76	186.3	\$0.00	0.0	183.2	264.5
2010	Q1AV	\$7.86	318.3	\$61.92	267.9	\$29.19	218.5	262.2	\$430.84	198.3	\$0.78	190.6	\$2.27	266.4	210.6	256.2
2011	11Q1	\$7.17	290.4	\$69.28	300.9	\$28.75	215.2	290.4	\$365.40	168.2	\$0.76	186.5	\$1.55	181.7	174.4	255.4
2011	11Q2	\$7.37	298.2	\$69.89	302.2	\$41.46	310.3	302.5	\$419.00	192.8	\$0.83	203.2	\$0.00	0.0	195.3	274.3

[View Annual/Qtr Graphs](#)

[View Tabular Report](#)

Colorado Construction Cost Index



Comments:

This Colorado Construction Cost Index is composed of six indicator items and based on bid prices relative to the unit prices of 1987 (unit index=100). The Index varies due to type and location of projects in addition to overall economic conditions.

Earthwork (Excavation and Embankment):

The average price was \$7.37 a cu. yd. which is up \$.20 from the previous quarter.

Hot Mix Asphalt:

The average price was \$69.89 a ton which is up \$.61 from the previous quarter.

Concrete Pavement:

The average price was \$41.46 a sq. yd. which is up \$12.71 per sq. yd. from the previous quarter.

Structural Steel:

There were no bids on items in this category.

Structural Concrete:

The average price was \$419.00 a cu. yd. which is up \$53.6 from the previous quarter.

Reinforcing Steel:

The average price was \$.083 a lb. which is up \$.07 from the previous quarter.