

STATE OF COLORADO



DEPARTMENT OF TRANSPORTATION

4201 East Arkansas Avenue
Denver, Colorado 80222
(303) 757-9293

January 10, 2001

COLORADO CONSTRUCTION COST INDEX REPORT
Calendar year 2000

Prepared by
Dino Sarganis
Engineering Estimates and Market Analysis Unit of
Agreements and Market Analysis Branch

Prepared for
John Unbewust, Chief Engineer

STATE OF COLORADO



DEPARTMENT OF TRANSPORTATION

4201 East Arkansas Avenue
Denver, Colorado 80222
(303) 757-9293

SUMMARY

CONSTRUCTION COST INDEX FOR SELECTED HIGHWAY CONSTRUCTION ITEMS

4TH QUARTER ENDING DECEMBER 31, 2000

Index for this quarter.....	168.9
Point change from last quarter.....	-16.9
Percentage change from last quarter.....	-10.0%
Index for same quarter of previous year.....	154.3
Point change from this quarter	+14.6
Percentage change from this quarter	+ 9.5%
Index for last 12 months.....	170.7
Point change from previous year.....	+11.5
Percentage change from previous year.....	+7.2%

Average number of bidders this quarter.....	4.77
Change in number of bidders from last quarter.....	- 4.8%

NOTE: All information shown in this publication was assembled using 1987 as base year.

Summary Report for all the projects awarded 1/1/00 to 12/31/00

<i>Project Amount</i>	<i>No. of Projects</i>	<i>No. of Bidders</i>	<i>Total Contract Amt.</i>	<i>Avg. # of Bids</i>
<i>\$0.00 to \$49,999.99</i>	0			
<i>\$50,000.00 to \$99,999.99</i>	2	7	\$188,211.76	3.5
<i>\$100,000.00 to \$249,999.99</i>	15	62	\$2,934,227.31	4.1
<i>\$250,000.00 to \$499,999.99</i>	17	76	\$6,531,371.60	4.5
<i>\$500,000.00 to \$999,999.99</i>	22	82	\$16,354,310.91	3.7
<i>1,000,000.00 to \$2,499,999.99</i>	41	210	\$67,909,313.79	5.1
<i>2,500,000.00 to \$4,999,999.99</i>	24	125	\$84,061,040.45	5.2
<i>5,000,000.00 to \$9,999,999.99</i>	11	57	\$78,877,667.98	5
<i>10,000,000.00 to 19,999,999.99</i>	10	62	\$129,004,832.86	6.2
<i>20,000,000.00 to \$49,499,999.99</i>	7	40	\$198,671,687.59	5.7
<i>50,000,000.00 or Greater</i>	1	3	\$93,398,000.00	3.0
Total	150	724	\$677,930,664.25	

The number of bidders on all projects awards during this period **4.83 bidders per contract.**

Index Items as a percent of the total construction cost.

2000 Annual CCI Items:	\$ 281,989,948.80	
	-----	= 41.6%
2000 Annual Construction Items:	\$677,930,664.25	

CCI REPORT FROM 01/01/2000 TO 12/31/2000

ITEM CODE	# OF ITEM	QUANTITY	PRICE	UNIT PRICE	INDEX
203-00000 To 203-00060 203-00062 To 203-00210 203-00400 To 203-00500 203-01020 To 203-01030 209-00000 To 209-00050	90	English (CY) 4,257,226.60	\$24,876,258.33	\$5.84	
	34	Metric (CM) 3,068,214.00	\$18,568,428.61	\$6.05	
UNCLASSIFIED EXCAV (CIP)	124	8,270,450.51^{CY}	\$43,444,686.94	\$5.25	212.6
403-00720, 403-01000, 403-01010, 403-02000, 403-09121 To 403-09500 403-31300 To 403 36447 403-91401 To 403-95353 411-03100 To 411-03355 411-10010 To 411-90010 (Gal/Lit) Gallon & Liter are converted to Ton	270	English (TON) 2,192,279.82	\$86,617,119.98	\$39.51	
	79	Metric (MT) 451,981.02	\$21,058,276.32	\$46.59	
HOT BIT. PAVEMENT (H A)	349	2,690,588.90^T	\$107,675,396.30	\$40.02	173.0
412-00000 To 412-00050 412-00700 To 412-01352 412-03000 To 412-03000	31	English (SY) 955,055.19	\$32,190,331.84	\$33.71	
	34	Metric (SM) 1,790,618.62	\$31,466,729.18	\$17.57	
CONCRETE PAVEMENT (9")	65	3,096,617.24^{SY}	\$63,657,061.02	\$20.56	153.9
SURFACING TOTAL INDEX					170.8
509-00000 To 509-00000	8	English (LB) 2,852,500.40	\$3,071,658.19	\$1.08	
	4	Metric (KG) 2,229,405.00	\$6,127,651.45	\$2.75	
STRUCTURAL STEEL	12	7,768,338.43^{LB}	\$9,199,309.64	\$1.18	138.8
601-01022 To 601-01022 601-01030 To 601-01060 601-03030 To 601-05064	67	English (CY) 59,677.30	\$23,197,067.79	\$388.71	
	42	Metric (CM) 53,293.20	\$21,676,666.92	\$406.74	
STRUCTURAL CONCRETE	109	129,384.81^{CY}	\$44,873,734.71	\$346.82	159.6
602-00000 To 602-00000 602-00020 To 602-00020	55	English (LB) 11,923,256.00	\$5,961,600.34	\$0.50	
	27	Metric (KG) 7,208,918.60	\$7,178,159.85	\$1.00	
REINFORCING STEEL	82	27,818,921.51^{LB}	\$13,139,760.19	\$0.47	115.2

STRUCTURAL TOTAL INDEX 146.8

COMPOSITE INDEX = 170.7

Sum of the 6 categories cost = \$281,989,948.80

Summary Report for all the projects awarded from 10/1/00to 12/31/00

<i>Project Amount</i>	<i>No. of Projects</i>	<i>No. of Bidders</i>	<i>Total Contract Amt.</i>	<i>Avg. # of Bids</i>
<i>\$0.00 to \$49,999.99</i>	0			
<i>\$50,000.00 to \$99,999.99</i>	0			
<i>\$100,000.00 to \$249,999.99</i>	2	9	\$461,887.47	4.5
<i>\$250,000.00 to \$499,999.99</i>	3	6	\$966,996.71	2.0
<i>\$500,000.00 to \$999,999.99</i>	6	28	\$4,011,119.79	4.7
<i>1,000,000.00 to \$2,499,999.99</i>	11	56	\$17,780,983.82	5.1
<i>2,500,000.00 to \$4,999,999.99</i>	5	27	\$17,778,300.86	5.4
<i>5,000,000.00 to \$9,999,999.99</i>	4	24	\$27,400,000.56	6.0
<i>10,000,000.00 to 19,999,999.99</i>	2	9	\$23,183,328.63	4.5
<i>20,000,000.00 to \$49,499,999.99</i>	2	8	\$50,147,303.87	4.0
<i>50,000,000.00 or Greater</i>	0			
Total	35	167	\$141,729,921.71	

The number of bidders on all projects awards during this period **4.77 bidders per contract.**

Index Items as a percent of the total construction cost.

4 th Quarter CCI Items:	\$ 72,551,862.08	
	-----	= 51.2%
4 th Quarter All Construction Items:	\$141,729,921.71	

CCI REPORT FROM 10/01/2000 TO 12/31/2000

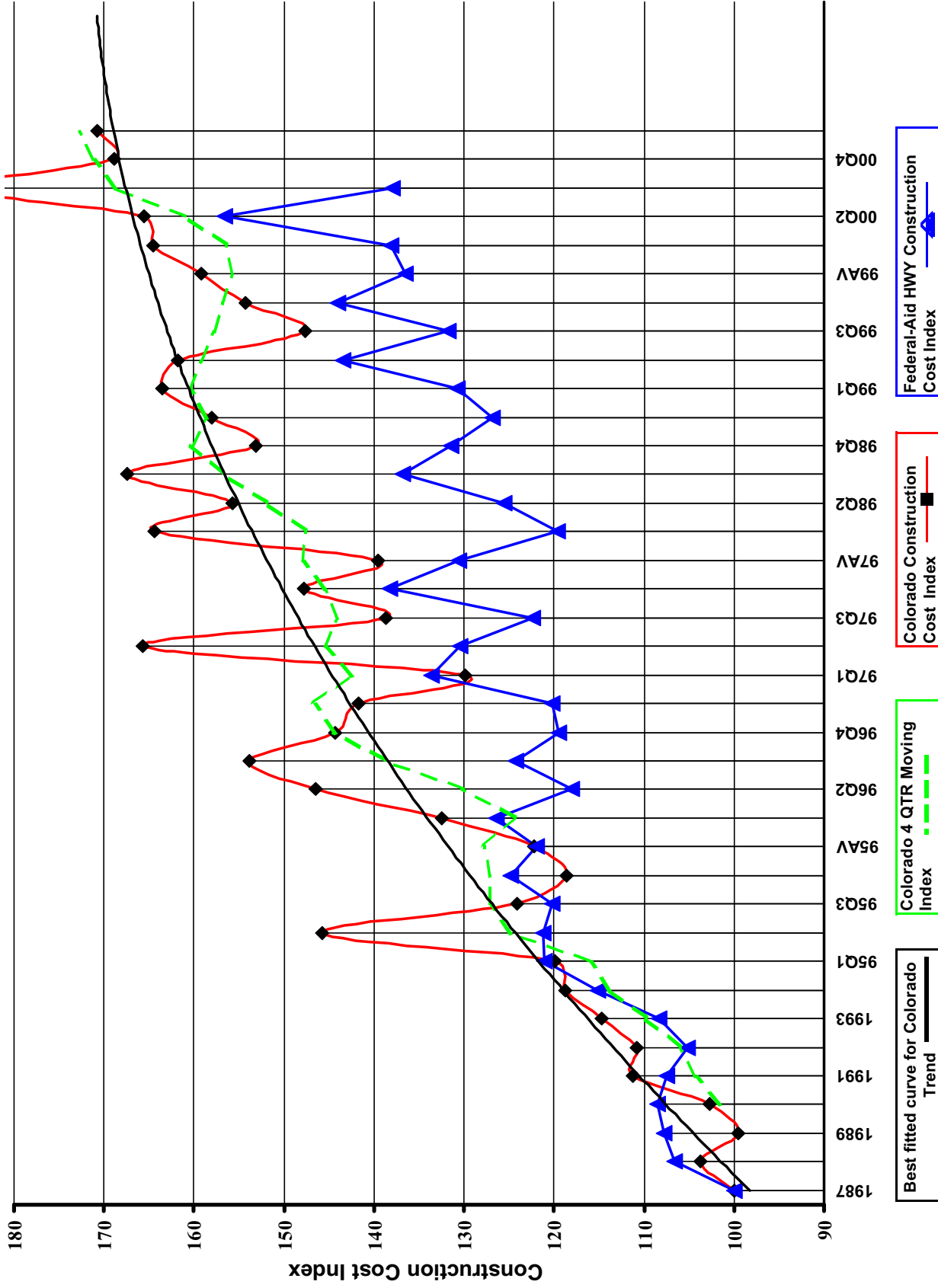
ITEM CODE	# OF ITEM	QUANTITY	PRICE	UNIT PRICE	INDEX
203-00000 To 203-00060 203-00062 To 203-00210 203-00400 To 203-00500 203-01020 To 203-01030 209-00000 To 209-00050	22 5	English (CY) 580,871.60 Metric (CM) 734,160.00	\$3,295,683.30 \$4,052,773.89	\$5.67 \$5.52	
UNCLASSIFIED EXCAV (CIP)	27	1,541,152.88^{CY}	\$7,348,457.19	\$4.77	193.0
403-00720, 403-01000, 403-01010, 403-02000, 403-09121 To 403-09500 403-31300 To 403 36447 403-91401 To 403-95353 411-03100 To 411-03355 411-10010 To 411-90010 (Gal/Lit) Gallon & Liter are converted to Ton	77 10	English (TON) 786,365.00 Metric (MT) 121,450.08	\$30,622,231.53 \$4,732,125.31	\$38.94 \$38.96	
HOT BIT. PAVEMENT (H A)	87	920,263.72^T	\$35,354,356.84	\$38.42	166.0
412-00000 To 412-00050 412-00700 To 412-01352 412-03000 To 412-03000	15 5	English (SY) 365,438.93 Metric (SM) 79,967.19	\$17,312,486.52 \$2,815,763.73	\$47.37 \$35.21	
CONCRETE PAVEMENT (9")	20	461,078.90^{SY}	\$20,128,250.25	\$43.65	326.8
SURFACING TOTAL INDEX					182.4
509-00000 To 509-00000	1 1	English (LB) 300.00 Metric (KG) 552,830.00	\$3,000.00 \$1,415,244.80	\$10.00 \$2.56	
STRUCTURAL STEEL	2	1,219,290.15^{LB}	\$1,418,244.80	\$1.16	136.3
601-01022 To 601-01022 601-01030 To 601-01060 601-03030 To 601-05064	22 6	English (CY) 11,660.80 Metric (CM) 7,431.60	\$3,334,155.00 \$2,832,031.99	\$285.93 \$381.08	
STRUCTURAL CONCRETE	28	21,381.33^{CY}	\$6,166,186.99	\$288.39	132.7
602-00000 To 602-00000 602-00020 To 602-00020	17 4	English (LB) 1,985,232.00 Metric (KG) 1,015,604.00	\$1,056,194.74 \$1,080,171.27	\$0.53 \$1.06	
REINFORCING STEEL	21	4,224,638.82^{LB}	\$2,136,366.01	\$0.51	123.3

STRUCTURAL TOTAL INDEX 131.6

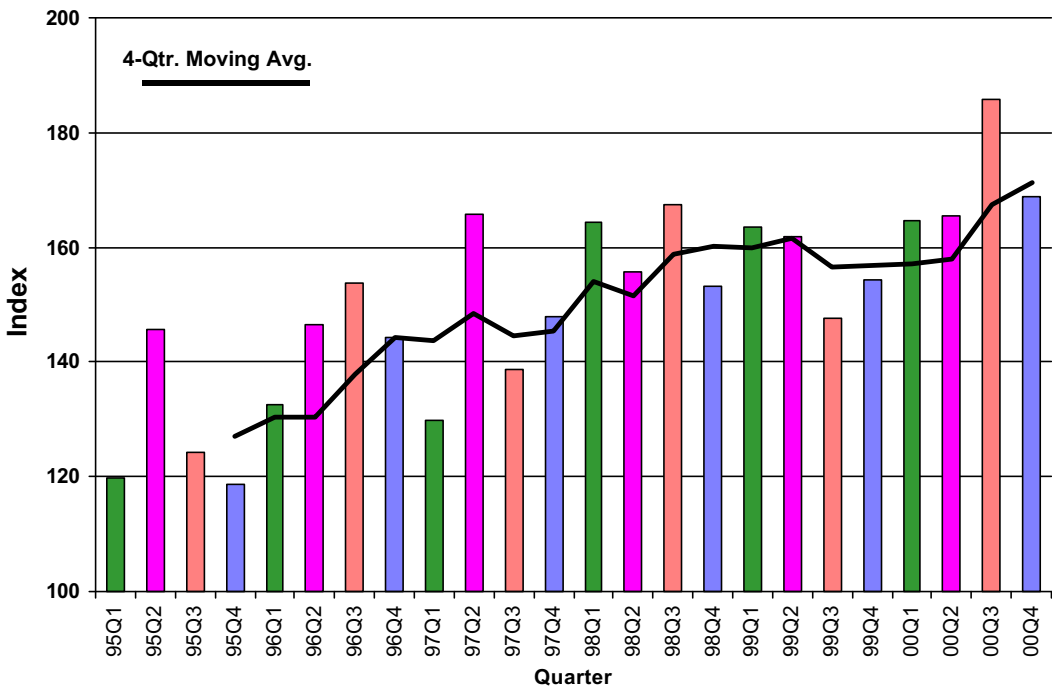
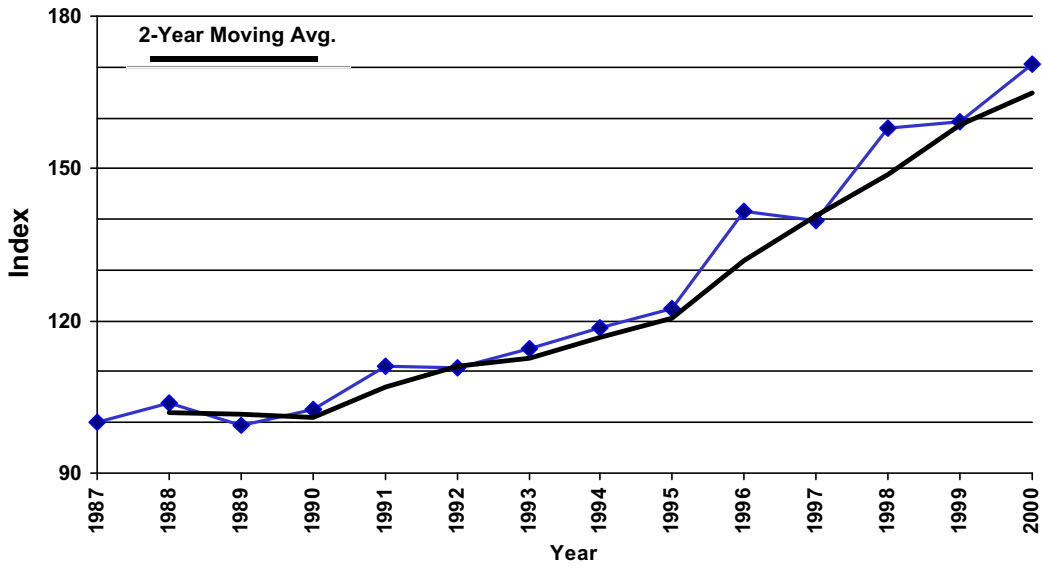
COMPOSITE INDEX = 168.9

Sum of the 6 categories cost = \$72,551,862.08

Colorado Highway Construction Cost Index Graph and Tabulations (1987 Base Year)



Colorado Construction Cost Index



Colorado Highway Construction Cost Index Graph and Tabulations (1987 Base Year)

YEAR	QTR.	Earthwork		Asph. Pavement		Concrete Pavement		Surfacing		Structural Concrete		Reinforcing Steel		Structural Steel		Structural Index	Composite Index
		Bid Price	Index	Bid Price	Index	Bid Price	Index	Bid Price	Index	Bid Price	Index	Bid Price	Index	Bid Price	Index		
1987	1987	\$2.47	100.0	\$23.17	100.0	\$13.36	100.0	100.0	100.0	\$217.32	100.0	\$0.41	100.0	\$0.85	100.0	100.0	100.0
1988	1988	\$2.92	118.1	\$23.88	103.0	\$13.84	103.6	103.1	89.7	\$195.02	89.7	\$0.45	110.7	\$0.89	104.1	96.7	103.7
1989	1989	\$2.57	103.9	\$23.67	102.2	\$11.65	87.2	100.6	91.8	\$199.41	91.8	\$0.40	97.8	\$0.88	103.5	95.3	99.6
1990	1990	\$2.78	112.5	\$23.98	103.5	\$15.09	113.0	104.5	87.8	\$190.86	87.8	\$0.37	90.8	\$0.99	116.0	94.1	102.7
1991	1991	\$3.31	133.8	\$26.25	113.3	\$16.03	120.0	114.0	89.9	\$195.43	89.9	\$0.38	93.1	\$0.89	104.4	93.5	111.2
1992	1992	\$2.77	112.3	\$26.20	113.1	\$23.82	178.3	119.8	99.8	\$216.87	99.8	\$0.36	87.9	\$0.71	82.8	94.0	110.7
1993	1993	\$3.25	131.4	\$27.74	119.7	\$16.75	125.4	121.3	97.7	\$212.43	97.7	\$0.37	90.1	\$0.79	93.0	95.3	114.7
1994	1994	\$3.56	144.2	\$28.40	122.6	\$18.78	140.6	124.4	101.2	\$219.94	101.2	\$0.37	89.7	\$0.67	78.8	94.4	118.8
1995	95Q1	\$2.85	115.5	\$30.98	133.7	\$20.33	152.2	135.6	100.1	\$217.43	100.1	\$0.39	94.6	\$0.67	78.8	94.7	119.8
1995	95Q2	\$6.18	250.1	\$30.43	131.3	\$27.06	202.5	138.7	104.7	\$227.59	104.7	\$0.40	97.0	\$0.73	85.6	99.3	145.8
1995	95Q3	\$3.33	134.7	\$30.51	131.7	\$16.02	119.9	130.5	105.6	\$229.50	105.6	\$0.38	93.8	(\$1.00)	-1.0	102.7	124.1
1995	95Q4	\$3.33	134.9	\$28.43	122.7	\$21.81	163.2	126.9	88.4	\$192.09	88.4	\$0.40	97.8	\$0.95	111.7	94.9	118.6
1995	95AV	\$3.41	138.1	\$30.25	130.5	\$17.82	133.4	130.8	97.2	\$211.29	97.2	\$0.39	94.0	\$0.90	105.5	98.3	122.3
1996	96Q1	\$4.26	172.4	\$30.62	132.2	\$17.31	129.6	131.9	109.3	\$237.58	109.3	\$0.39	94.0	(\$1.00)	-1.0	105.6	132.5
1996	96Q2	\$5.11	206.9	\$31.35	135.3	\$34.29	256.7	147.8	109.3	\$237.47	109.3	\$0.43	103.7	\$1.02	119.1	110.2	146.5
1996	96Q3	\$4.48	181.2	\$36.31	156.7	\$16.92	126.6	153.6	143.7	\$312.26	143.7	\$0.44	106.7	\$1.32	154.8	138.8	153.9
1996	96Q4	\$4.05	164.1	\$35.94	155.1	(\$1.00)	-1.0	155.1	109.3	\$237.47	109.3	\$0.45	108.9	(\$1.00)	-1.0	109.2	144.4
1996	96AV	\$4.46	180.5	\$32.73	141.3	\$19.22	143.9	141.5	122.4	\$265.98	122.4	\$0.43	105.1	\$1.09	128.5	120.2	141.7
1997	97Q1	\$3.60	145.8	\$31.47	135.8	\$20.81	156.0	137.9	105.7	\$229.63	105.7	\$0.42	103.5	\$0.97	113.7	106.9	129.9
1997	97Q2	\$7.09	286.8	\$34.08	147.1	\$24.42	182.8	150.7	124.2	\$269.94	124.2	\$0.46	111.7	\$1.12	131.6	123.3	165.7
1997	97Q3	\$4.08	165.1	\$31.55	136.2	\$24.15	180.8	140.8	118.5	\$257.62	118.5	\$0.49	119.3	\$1.06	124.7	119.9	138.6
1997	97Q4	\$3.65	147.9	\$37.66	162.5	\$18.84	141.1	160.3	123.4	\$268.22	123.4	\$0.45	110.8	(\$1.00)	-1.0	120.4	147.8
1997	97AV	\$4.24	171.7	\$32.92	142.1	\$21.39	160.1	143.9	113.3	\$246.29	113.3	\$0.45	110.8	\$1.01	117.9	113.8	139.6
1998	98Q1	\$5.30	214.4	\$36.20	156.2	\$30.88	231.2	164.0	134.4	\$292.00	134.4	\$0.48	116.2	(\$1.00)	-1.0	129.9	164.4
1998	98Q2	\$4.76	192.6	\$36.52	157.6	\$24.23	181.4	160.1	121.7	\$264.38	121.7	\$0.48	116.0	(\$1.00)	-1.0	120.3	155.8
1998	98Q3	\$2.69	230.4	\$35.21	141.9	\$34.18	255.9	162.6	135.8	\$295.21	135.8	\$0.22	126.6	(\$1.00)	-1.0	133.6	167.5
1998	98Q4	\$4.33	175.0	\$34.53	149.0	\$28.64	214.4	155.8	134.0	\$291.27	134.0	\$0.51	125.1	(\$1.00)	-1.0	131.9	153.1
1998	98AV	\$4.89	198.0	\$35.72	154.2	\$26.54	198.7	158.7	130.2	\$283.01	130.2	\$0.50	122.0	(\$1.00)	-1.0	128.2	158.1
1999	99Q1	\$5.91	239.4	\$36.57	157.8	\$18.57	139.0	155.9	154.3	\$335.29	154.3	\$0.59	144.9	\$0.54	63.8	134.1	163.5
1999	99Q2	\$5.34	216.0	\$35.09	151.4	\$21.90	163.9	152.7	150.3	\$326.59	150.3	\$0.61	149.8	\$1.15	135.3	147.1	161.8
1999	99Q3	\$4.42	178.8	\$36.62	158.1	\$24.59	184.1	160.7	137.4	\$298.62	137.4	\$0.52	125.5	(\$1.00)	-1.0	107.2	147.7
1999	99Q4	\$4.11	166.5	\$33.96	146.6	\$33.04	247.3	156.9	140.5	\$305.27	140.5	\$0.50	121.1	\$1.46	171.1	143.0	154.3
1999	99AV	\$4.94	199.8	\$35.23	152.0	\$22.78	170.5	153.9	142.9	\$310.56	142.9	\$0.54	132.0	\$1.41	165.3	145.3	159.2
2000	00Q1	\$5.11	206.9	\$36.84	159.0	\$21.73	162.7	159.4	157.0	\$341.22	157.0	\$0.45	110.2	(\$1.00)	-1.0	145.7	164.5
2000	00Q2	\$4.41	178.5	\$40.71	175.7	\$11.84	88.6	166.8	172.5	\$374.75	172.5	\$0.47	114.7	\$1.25	146.2	155.9	165.5
2000	00Q3	\$6.42	259.7	\$43.57	188.0	\$22.69	169.8	186.2	163.6	\$355.44	163.6	\$0.47	114.0	\$0.96	111.9	143.5	185.8
2000	00Q4	\$4.77	193.0	\$38.42	166.0	\$43.65	326.8	182.4	132.7	\$288.39	132.7	\$0.51	123.3	\$1.16	136.3	131.6	168.9
2000	00AV	\$5.25	212.6	\$40.02	173.0	\$20.56	153.9	170.8	159.6	\$346.82	159.6	\$0.47	115.2	\$1.18	138.8	146.8	170.7

COMMENTS:

This Colorado Construction Cost Index is composed of six indicator items and based on the total quantities used during 1987 (unit index=100).

Earthwork (Complete in place): \$4.77 a cubic yard. Down \$1.65 from last quarter and up \$0.66 from the same quarter a year ago. This decrease can be attributed mostly to two projects: the Atwood Interchange at I 76 and the replacement of two structures in Pueblo at SH 50.

Bituminous Pavement: \$38.42 a ton. Down \$5.15 from last quarter and up \$4.46 from the same quarter a year ago. Large quantities and oil price decreases in three projects contributed to this decrease. The projects are Jct 134 to Tabernash, US 50 West of Granada and US 24 West of Manitou Springs.

Concrete Pavement: \$43.65 a square yard. Up \$20.96 from the last quarter and up \$10.61 from the same quarter a year ago. One large project in Logan County accounted for the increase in price this quarter, the Atwood Interchange at I76.

Structural Steel: \$1.16 a pound. Up \$0.20 from the last quarter but down \$0.30 from the same quarter a year ago. The Structural Steel quantity of 552,830 KG for the Colorado Springs – Woodman Road Interchange contributed to the price increase.

Structural Concrete: \$288.39. a cubic yard. Down \$67.05 from the prior quarter and down \$16.88 from the same quarter a year ago. The second quarter had a large increase in price attributed to the complexity of I-225 and Parker Road. The price for the third quarter and fourth quarter has a decrease because of less complex projects.

Reinforcing Steel: \$0.51 a pound. Up \$0.04 from last quarter and up \$0.01 from the same quarter a year ago. There were no major variations in price or quantities.

ADDITIONAL INFORMATION:

Increases were observed in three of the six construction items in the Construction Cost Index from the previous quarter. Items showing decreases were Earthwork(Complete in place), Bituminous Pavement, and Structural Concrete.

Thirty-five projects were bid this quarter for a total of \$141,729,921.71. The competition for projects decreased from 5.0 to 4.77 bidders for each project on average. Thirty-five projects were bid last quarter and 29 in the same quarter last year.

Two metric projects were bid this quarter. Metric quantities have been converted into English units for inclusion in this report.

There are two new charts now. One shows annual CCI information and the other show quarterly CCI information.

Neither Design/Build nor Lump Sum projects were bid this quarter.