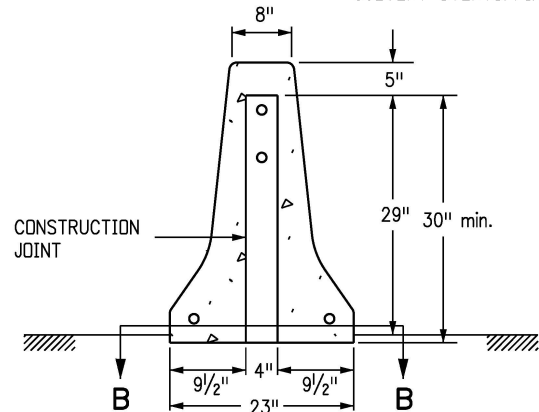
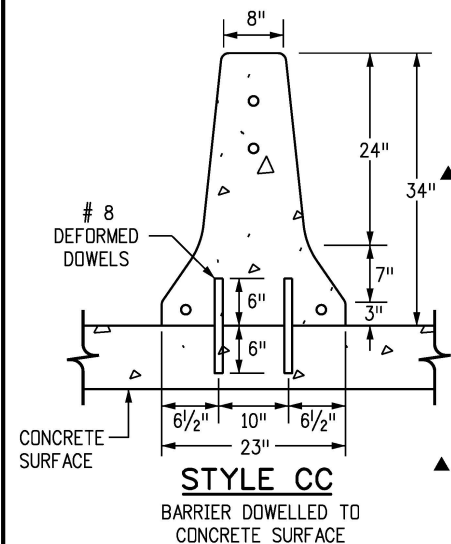


DRAINAGE SLOT DIMENSIONS AND LOCATIONS SHALL BE PROVIDED BY A HYDRAULIC ENGINEER AND SHOWN ON THE PLANS WHEN THE FLOW MUST BE CARRIED ACROSS A BARRIER SECTION (e.g. DROP INLET OR CULVERT OVERTOPPING AREAS).

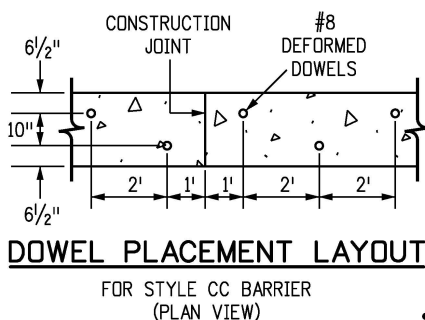


SECTION B-B
CONSTRUCTION JOINT

* SEE STYLE CA DETAIL FOR TYPICAL DIMENSIONS.

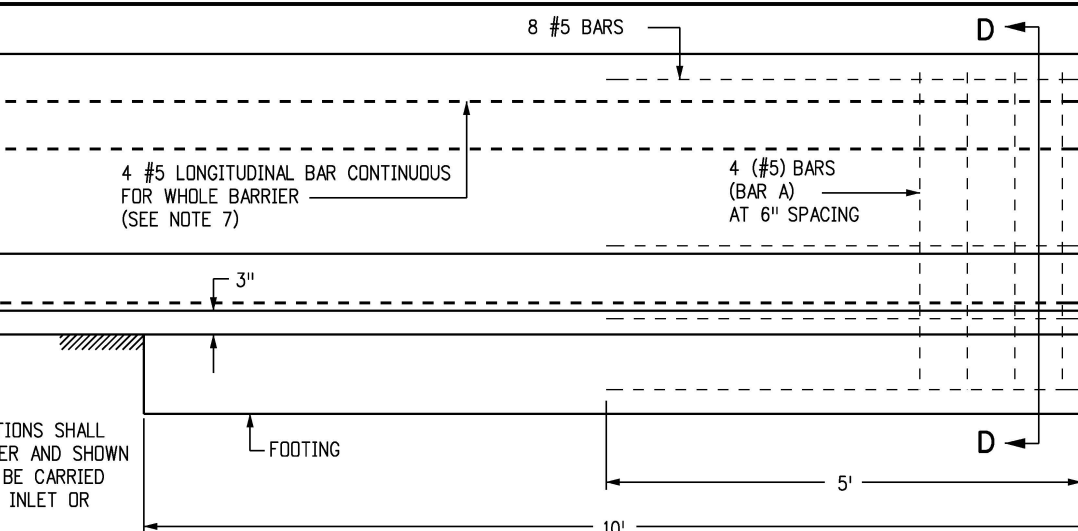


▲ IN FUTURE OVERLAYS, AN OVERALL MINIMUM HEIGHT OF 31 IN. IS REQUIRED.



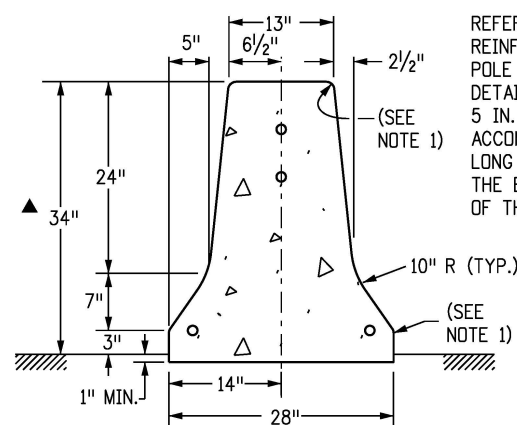
DOWEL PLACEMENT LAYOUT

FOR STYLE CC BARRIER (PLAN VIEW)



ANCHORAGE

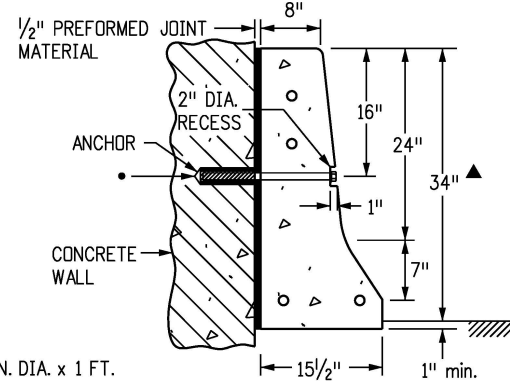
BARRIER ELEVATION VIEW INCLUDING REINFORCED ANCHORAGE AT END (FOR ANCHORAGE THAT TRANSITIONS TO BRIDGE RAIL OR THRIE BEAM, SEE SHEET 2)



STYLE CL

BARRIER FOR MOUNTED LIGHT POLES

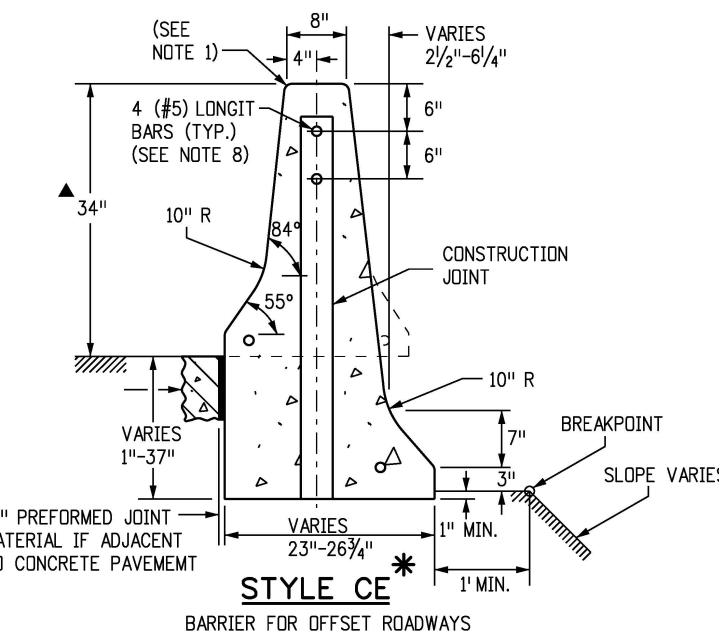
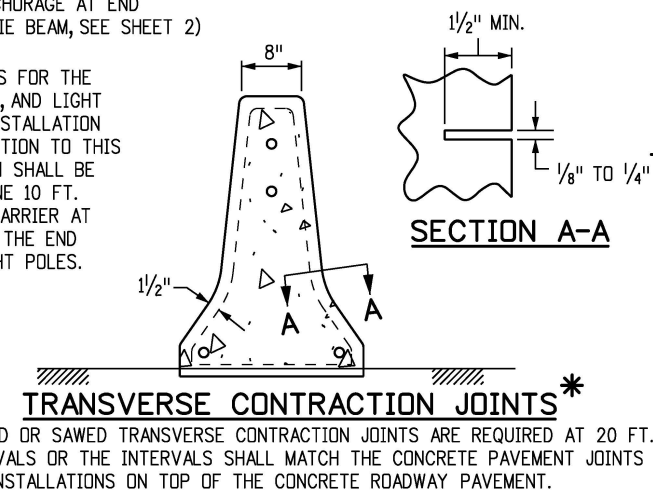
REFER TO THE PLANS FOR THE REINFORCING, WIRING, AND LIGHT POLE FOUNDATION INSTALLATION DETAILS. THE TRANSITION TO THIS 5 IN. WIDER SECTION SHALL BE ACCOMPLISHED IN ONE 10 FT. LONG SEGMENT OF BARRIER AT THE BEGINNING AND THE END OF THE RUN OF LIGHT POLES.



STYLE CD

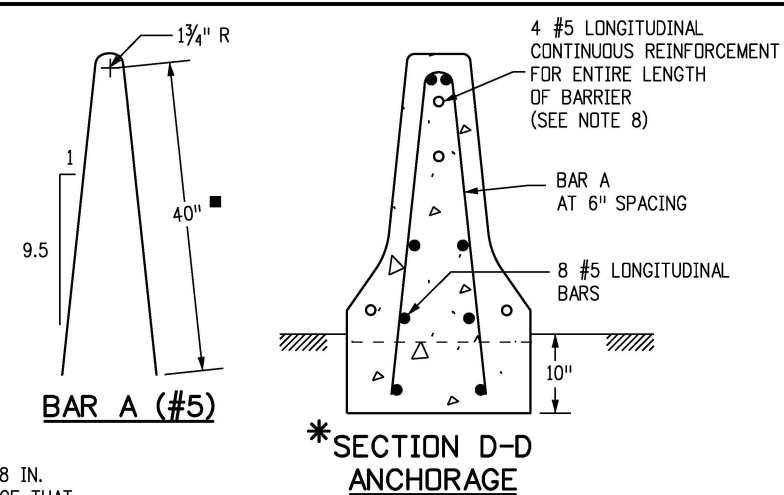
BARRIER AGAINST WALL

• 1/2 IN. DIA. x 1 FT. LONG GALVANIZED ANCHOR BOLT AND WASHER, MECHANICALLY FASTENED AT 2 FT. - 6 IN. CENTERS. USE ONLY WHEN CALLED FOR ON PLANS.



STYLE CE

BARRIER FOR OFFSET ROADWAYS



GENERAL NOTES

- ALL EDGES SHALL BE ROUNDED WITH A 1 IN. RADIUS EXCEPT AS SHOWN.
- THE BARRIER SHALL BE ANCHORED AT THE ENDS AND AT INTERRUPTIONS WITH THE 10 FT. REINFORCED ANCHORAGE. THE FOOTING AND END BARRIER MAY BE MONOLITHIC OR THE BARRIER MAY BE CONNECTED TO THE 10 IN. DEEP FOOTING USING TEN #8 REBAR DOWELS (10 IN. LONG) SET TWO IN LINE AT 24 IN. SPACING.
- BARRIER MAY BE CAST-IN-PLACE, SLIP FORMED, OR PRECAST (SEE STANDARD PLAN M-606-14).
- BARRIER FOUNDATION SHALL BE PAVEMENT, OR COMPACTED AGGREGATE BASE, OR EMBANKMENT MATERIAL.
- NO FOOTING IS REQUIRED (TYP.) EXCEPT FOR 10 FT. ANCHORAGE.
- CONSTRUCTION JOINTS SHALL BE USED ON ALL BARRIER TYPES SHOWN, AT THE END OF THE DAY'S POUR OR AFTER ANY INTERRUPTION LONGER THAN 30 MINUTES. ALL CONSTRUCTION JOINTS SHALL BE THOROUGHLY CLEANED BEFORE FRESH CONCRETE IS POURED.
- REINFORCING STEEL IN ANCHORAGE SHALL BE GRADE 60 EPOXY COATED DEFORMED BARS.
- CONTINUOUS LONGITUDINAL REINFORCEMENT SHALL BE EITHER GRADE 60 EPOXY COATED DEFORMED BARS OR WIRE STRAND WITH MINIMUM ULTIMATE TENSILE STRENGTH OF 28,000 LBS. AND CLASS C GALVANIZING ACCORDING TO ASTM A 603.
- TRANSITION TO EXISTING CONCRETE BARRIER INSTALLATIONS OF DISSIMILAR SHAPE SHALL BE ACCOMPLISHED IN ONE 10 FT. LONG SEGMENT OF BARRIER.
- CONCRETE SHALL BE CLASS D.
- ADDITIONAL MATERIAL FOR BARRIER EMBEDMENT GREATER THAN 1 IN. WILL NOT BE MEASURED AND PAID FOR SEPARATELY BUT SHALL BE INCLUDED IN THE WORK.
- EPOXY COATED LONGITUDINAL REBAR SHALL HAVE A MINIMUM LAP SPLICE OF 38 IN. WIRE STRAND LONGITUDINAL REINFORCEMENT SHALL BE BUTT WELDED OR MECHANICALLY SPLICED TO MAINTAIN 100 PERCENT OF THE MINIMUM REQUIRED TENSILE STRENGTH.
- ALL INCIDENTAL WORK AND MATERIAL SUCH AS DOWELS, GROUT, ANCHORS, BOLTS, PINS, JOINT MATERIAL, EXCAVATION FOR BASES, CONTINUOUS LONGITUDINAL REINFORCEMENT, SHALL BE INCLUDED IN THE COST OF GUARDRAIL.
- RETROREFLECTORIZATION IS REQUIRED ON ALL BARRIER TYPES. SEE BARRIER RETROREFLECTOR NOTES ON STANDARD PLAN S-612-1.

Computer File Information

Creation Date: 07/31/19
Designer Initials: JBK
Last Modification Date: 07/31/19
Detailer Initials: LTA
CAD Ver.: MicroStation V8 Scale: Not to Scale Units: English

Sheet Revisions

Date:	Comments
(R-X)	
(R-X)	
(R-X)	
(R-X)	

Colorado Department of Transportation

2829 West Howard Place
 CDDT HQ, 3rd Floor
 Denver, CO 80204
 Phone: 303-757-9021 FAX: 303-757-9868

Project Development Branch

JBK

GUARDRAIL TYPE 7
 F-SHAPE BARRIER

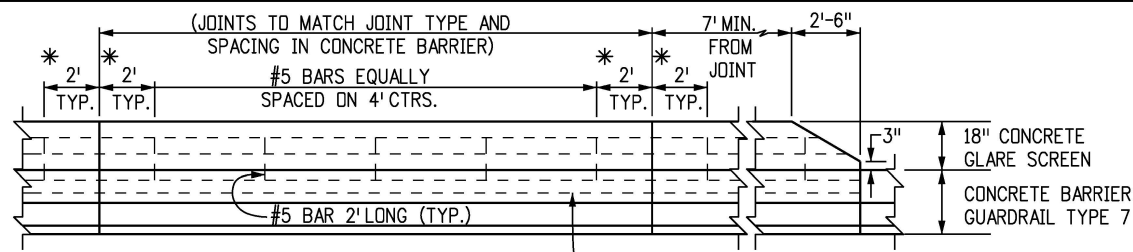
Issued by the Project Development Branch: July 31, 2019

STANDARD PLAN NO.

M-606-13

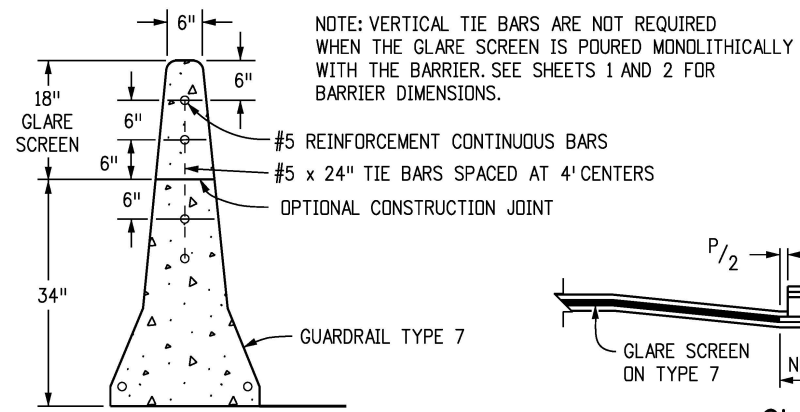
Standard Sheet No. 1 of 4

Project Sheet Number:

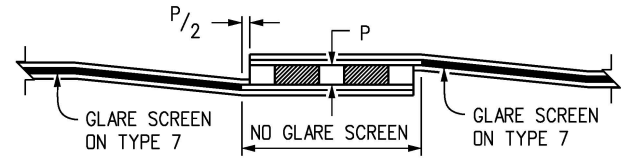


ELEVATION

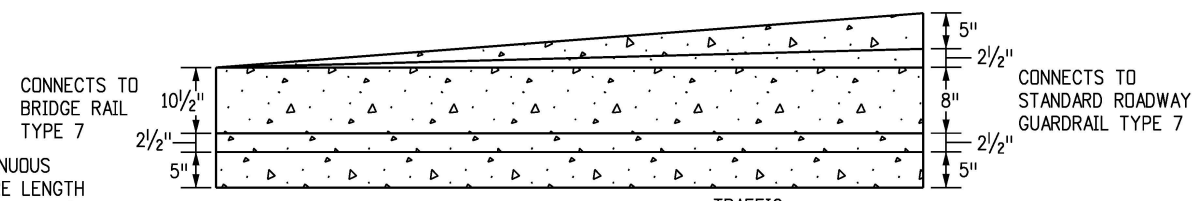
* 2 FT. IS TYPICAL FOR CAST-IN-PLACE BARRIERS.
1 FT. IS TYPICAL FOR PRECAST BARRIERS.
THE MINIMUM ACCEPTABLE DIMENSION IS 6 IN.



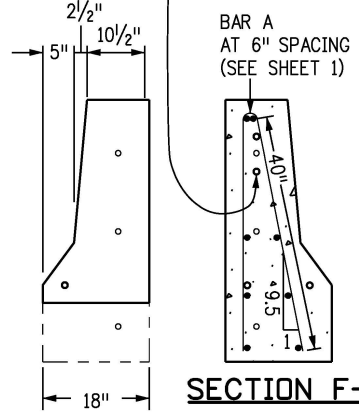
CONCRETE GLARE SCREEN



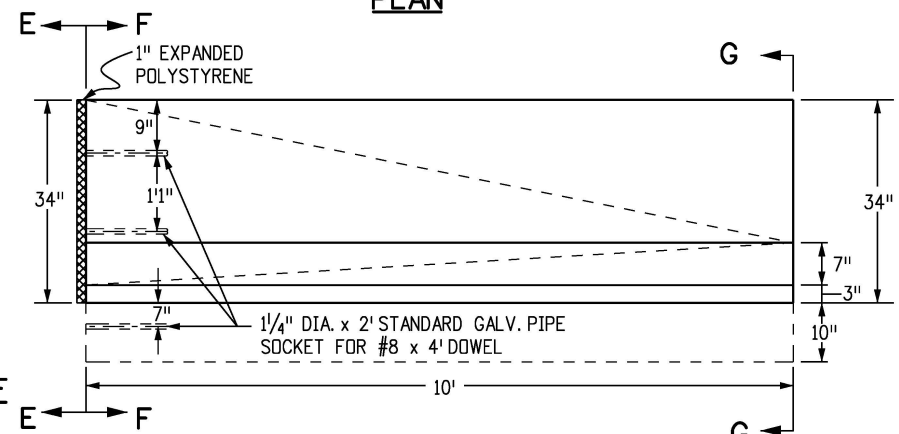
GLARE SCREEN AT MEDIAN OBSTRUCTIONS



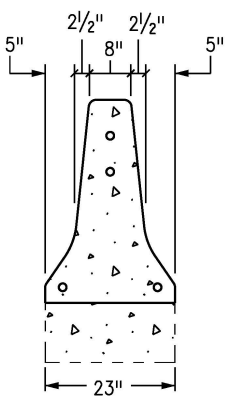
PLAN



SECTION E-E



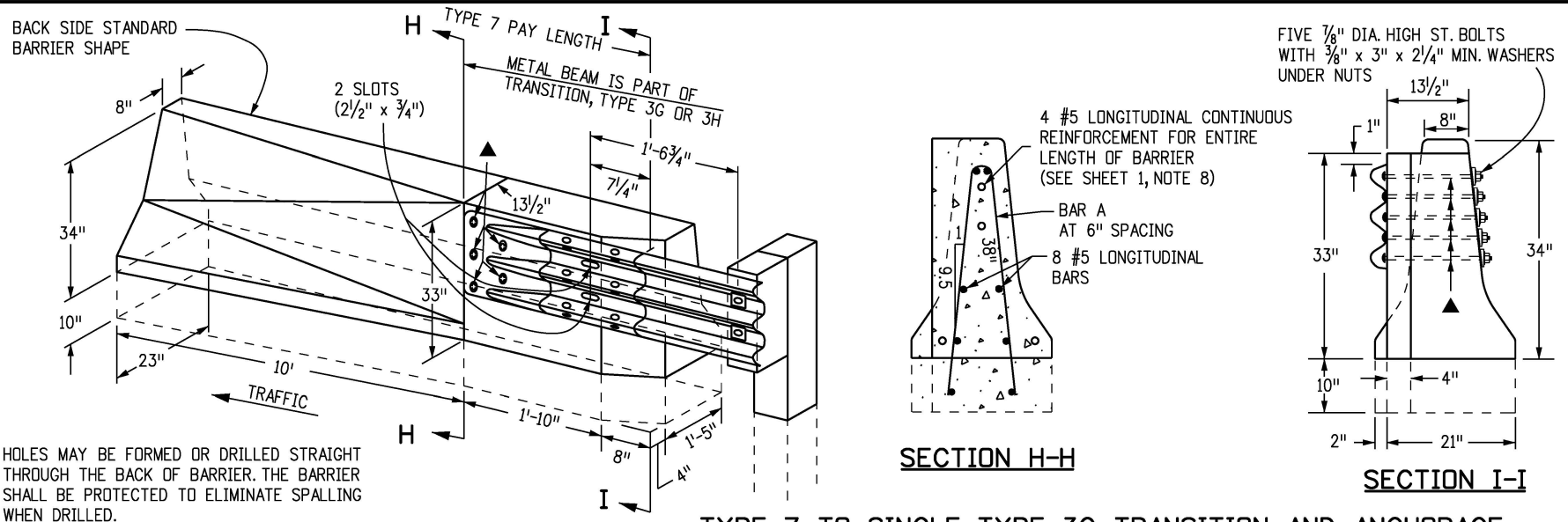
ELEVATION



SECTION G-G

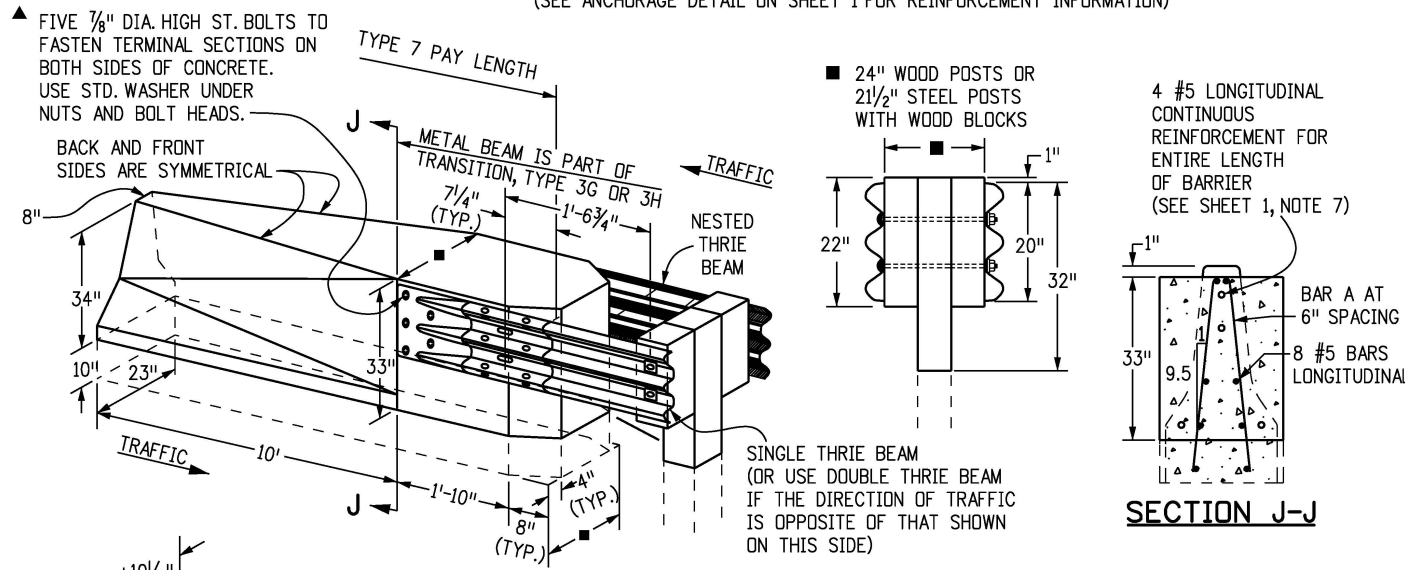
THIS SECTION PROVIDES A TRANSITION FOR THE SHAPE OF THE BRIDGE RAIL TYPE 7 TO THE ROADWAY GUARDRAIL TYPE 7. MEASURED AND PAID FOR AS GUARDRAIL TYPE 7. (SEE ANCHORAGE DETAIL ON SHEET 1 FOR REINFORCEMENT INFORMATION)

BRIDGE RAIL TYPE 7 TO ROADWAY SHOULDER TYPE 7 TRANSITION AND ANCHORAGE



TYPE 7 TO SINGLE TYPE 3G TRANSITION AND ANCHORAGE

(SEE ANCHORAGE DETAIL ON SHEET 1 FOR REINFORCEMENT INFORMATION)



TYPE 7 TO DOUBLE TYPE 3G TRANSITION AND ANCHORAGE

(SEE ANCHORAGE DETAIL ON SHEET 1 FOR REINFORCEMENT INFORMATION)

Computer File Information	
Creation Date:	07/31/19
Designer Initials:	JBK
Last Modification Date:	07/31/19
Detailer Initials:	LTA
CAD Ver.:	MicroStation V8
Scale:	Not to Scale
Units:	English

Sheet Revisions	
Date:	Comments:
(R-X)	
(R-X)	
(R-X)	
(R-X)	

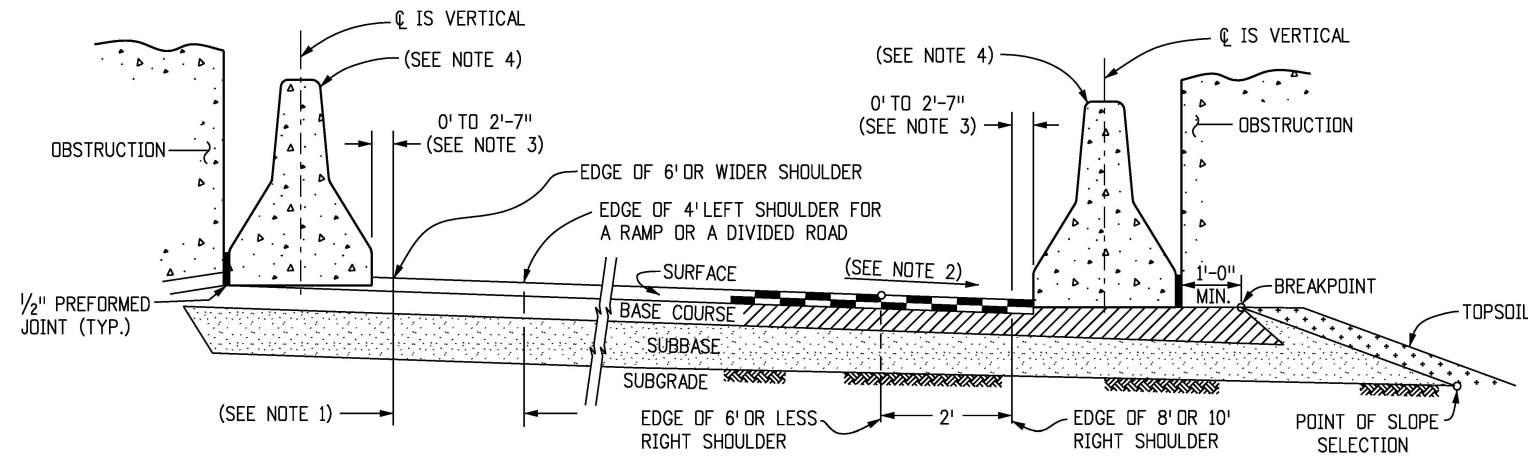
Colorado Department of Transportation
2829 West Howard Place
CDOT HQ, 3rd Floor
Denver, CO 80204
Phone: 303-757-9021 FAX: 303-757-9868

Project Development Branch **JBK**

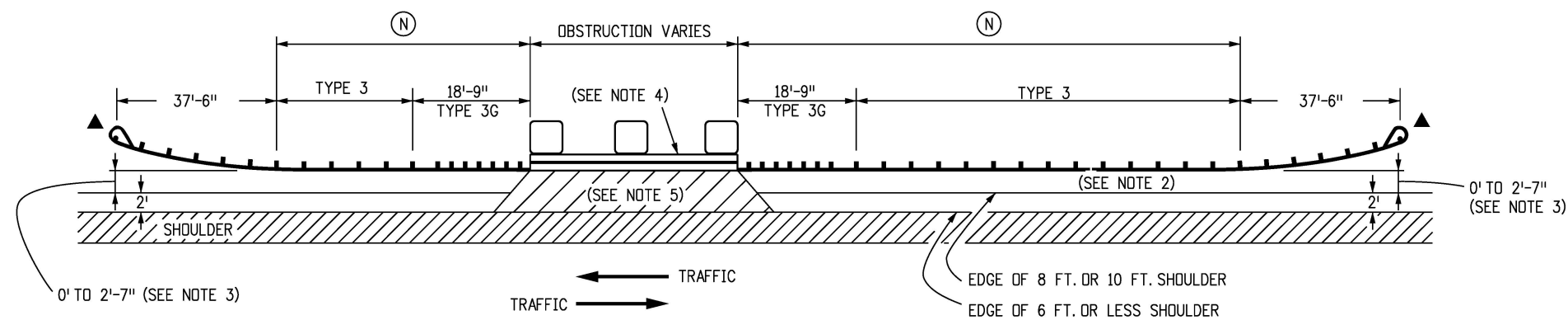
GUARDRAIL TYPE 7
F-SHAPE BARRIER

Issued by the Project Development Branch: July 31, 2019

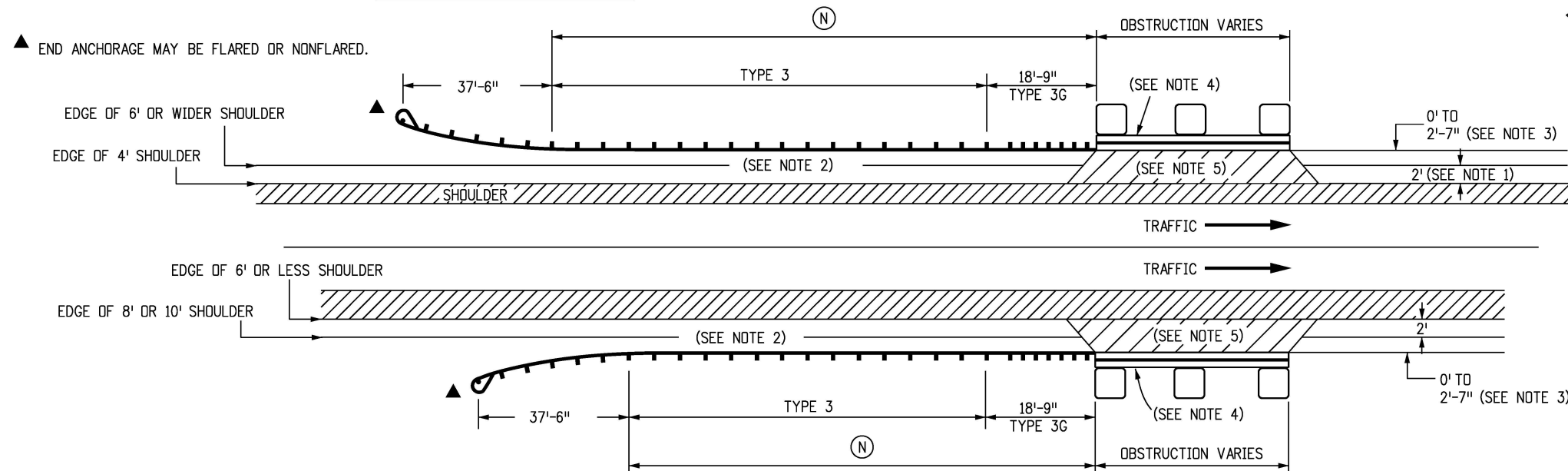
STANDARD PLAN NO.
M-606-13
Standard Sheet No. 2 of 4
Project Sheet Number:



TYPE 7 ON LEFT AND RIGHT SHOULDERS AT OBSTRUCTIONS



2-LANE 2-WAY ROADS



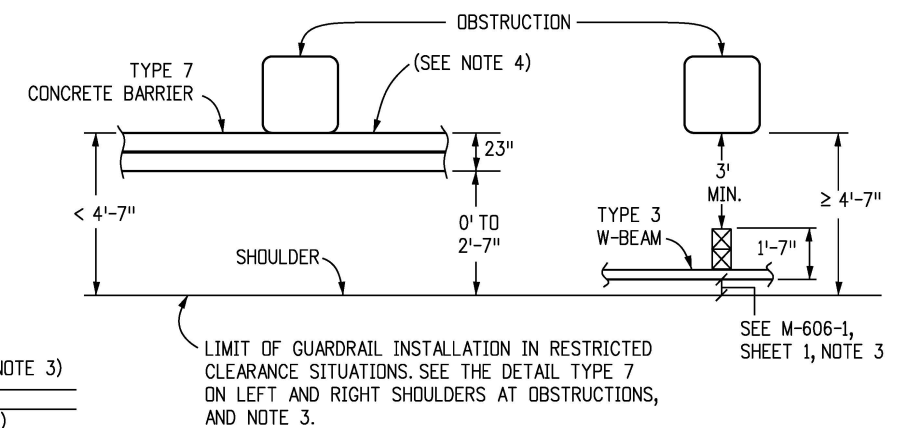
DIRECTIONAL ROADWAYS AND RAMPS

HAZARDS ON ROADSIDES

NOTES

1. TWO FT. IS DESIRABLE FOR THIS DIMENSION WITH A 4 FT. LEFT SHOULDER. THE MINIMUM IS 0 FT., WHICH IS ACCEPTABLE FOR 6 FT. OR WIDER SHOULDERS.
2. RATE OF SLOPE DEPENDS ON GUARDRAIL LOCATION:
 - A. FOR GUARDRAIL FACE 2 FT. OR LESS FROM THE NORMAL EDGE OF PAVED SHOULDER, CONTINUE THE RATE OF SLOPE OF THE NORMAL PAVED SHOULDER TO THE BREAKPOINT.
 - B. FOR GUARDRAIL FACE MORE THAN 2 FT. FROM THE NORMAL EDGE OF THE PAVED SHOULDER, THE SLOPE SHALL BE 10:1 OR FLATTER.
3. IF THE DISTANCE FROM THE EDGE OF SHOULDER TO THE OBSTRUCTION EXCEEDS 4 FT.-7 IN., TYPE 3-W BEAM GUARDRAIL MAY BE SPECIFIED ON THE PLANS INSTEAD OF TYPE 7 (SEE PLANS, AND DETAIL BELOW).
4. STYLE CA BARRIERS ARE SHOWN. STYLE CD MAY BE USED AS APPROPRIATE. SEE SHEET 2 FOR TYPE 7 TO SINGLE TYPE 3G TRANSITION.
5. THE AREA BETWEEN SHOULDER AND THE TYPE 7 SHALL BE PAVED. PAYMENT FOR THE PAVED SURFACE WILL BE MADE UNDER A PAVEMENT PAY ITEM, HMA OR CONCRETE, WITH QUANTITIES SHOWN ON THE PLANS.

(N) THE GUARDRAIL LENGTH DIMENSION "N" IS THE LENGTH AS DETERMINED BY THE LENGTH OF NEED COMPUTATION AND AS SHOWN ON THE PLANS. MINIMUM SHALL BE 12 FT.-6 IN. WHERE SITE CONDITIONS ALLOW.



Computer File Information	
Creation Date:	07/31/19
Designer Initials:	JBK
Last Modification Date:	07/31/19
Detailer Initials:	LTA
CAD Ver.:	MicroStation V8
Scale:	Not to Scale
Units:	English

Sheet Revisions	
Date:	Comments
(R-X)	
(R-X)	
(R-X)	
(R-X)	

Colorado Department of Transportation
 2829 West Howard Place
 CDDT HQ, 3rd Floor
 Denver, CO 80204
 Phone: 303-757-9021 FAX: 303-757-9868

Project Development Branch **JBK**

GUARDRAIL TYPE 7
F-SHAPE BARRIER

Issued by the Project Development Branch: July 31, 2019

STANDARD PLAN NO.
M-606-13
Standard Sheet No. 4 of 4
Project Sheet Number: