

*State of Colorado*  
*Department of Transportation*



**CDOT OpenRoads Designer Workspace**  
**Installation Guide**  
**April 2023**

## CDOT ORD Frequently Asked Questions

### What is the CDOT OpenRoads Designer (ORD) Workspace?

The CDOT ORD Workspace is Colorado Department of Transportation's Workspace files for the Bentley OpenRoads Designer Connect Edition software. The CDOT ORD Workspace contains resources, standards and tools necessary for designing projects in accordance with CDOT Standards.

*Note: The current CDOT ORD Workspace is not complete and will continue to be changed and modified as needed.*

### What version of OpenRoads Designer is the CDOT Workspace certified for?

The CDOT ORD Workspace is currently certified for use with **OpenRoads Designer Connect Edition, 2021 Release 1 (Version 10.10.01.03)**.

### What is the most current version of the CDOT Workspace? Designer

**CDOT\_ORD\_Workspace\_2021.R1-03\_10.10.01.03\_04.25.2023**. Released on April 2023.

### How do I install the CDOT ORD Workspace?

There are 2 methods for installing OpenRoads Designer and the CDOT Workspace. The Workspace files/standards can be installed as a (1) local copy to an individual users' machine using the Default OpenRoads Designer install path or (2) installed/stored on a server location or other local folder. It is important to decide which type of installation you want and follow the instructions for installation carefully. Please read this Installation Guide before beginning the installation process.

### Can computers have both SS4 and ORD loaded?

Yes, there is no requirement to remove SS4. Both can be installed and co-exist on the same machine.

### Is there Bentley training available for OpenRoads Designer CE?

Yes. The Bentley LEARN site has training for OpenRoads Designer Connect Edition and other Connect Edition applications.

### Where can the Workspace ReadMe file be found?

The ReadMe file is delivered with the Workspace and is found in the *Configuration* Folder.

# CDOT Workspace Installation Guide

## Installing the CDOT OpenRoads Designer (ORD) Workspace:

This guide provides steps for installing the *CDOT Workspace Standards* for use with the OpenRoads Designer Software. *OpenRoads Designer* can be installed/configured in 2 different ways: **(1)** to a **SINGLE USERS LOCAL MACHINE/WORKSTATION**, using the **Default Bentley Installation Configuration** -OR- **(2)** to a **SERVER LOCATION** or any other desired path, using a **Custom Installation Configuration**. For more information on how to install the OpenRoads Designer Software please see the Bentley Communities Website:

[https://communities.bentley.com/products/road\\_site\\_design/](https://communities.bentley.com/products/road_site_design/)

## Section 1:

### Installing CDOT ORD Workspace (Option 1): Single Users Machine/Bentley Default Installation Configuration:

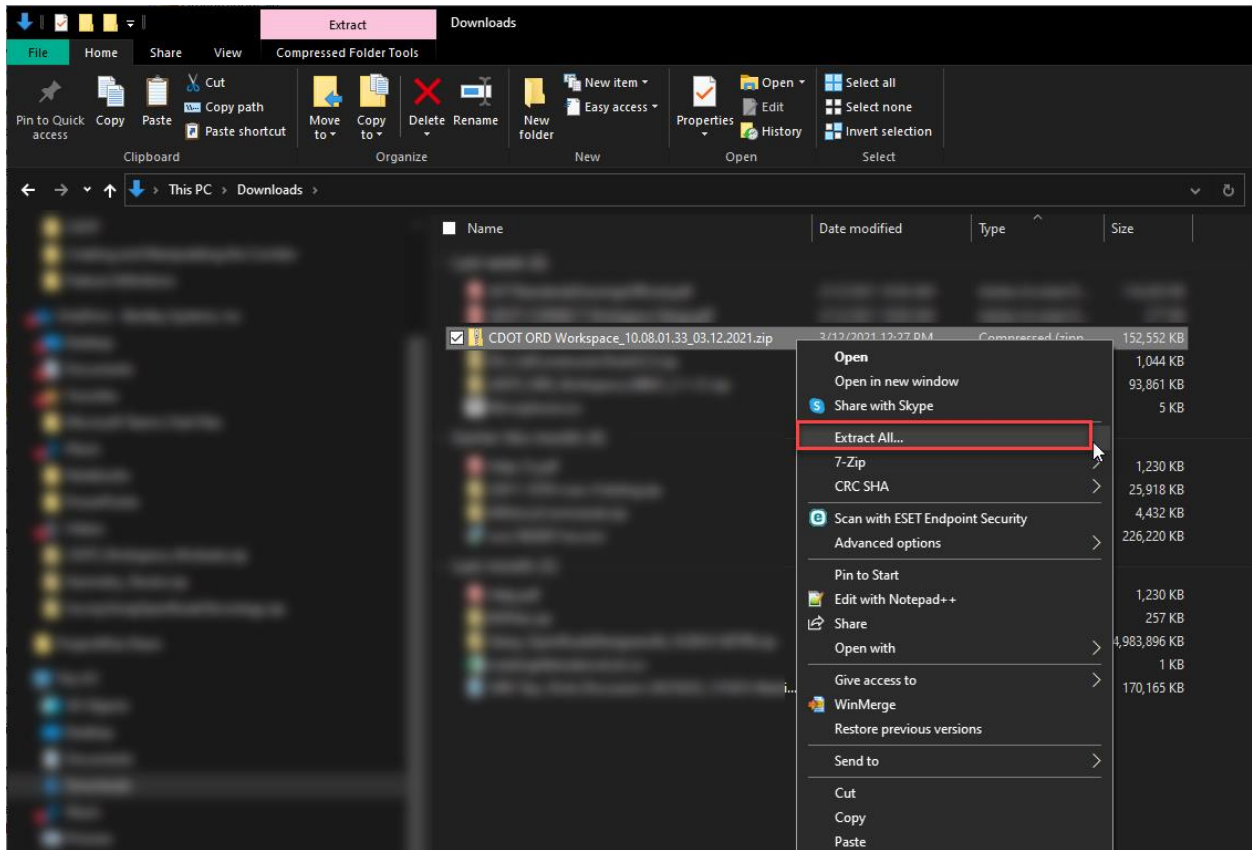
1. Download the **CDOT\_ORD\_Workspace\_2021.R1-03\_10.10.01.03\_04.25.2023.zip** file from the CDOT Website:

<https://www.codot.gov/business/designsupport/cadd/ord/ord-10-10-version>

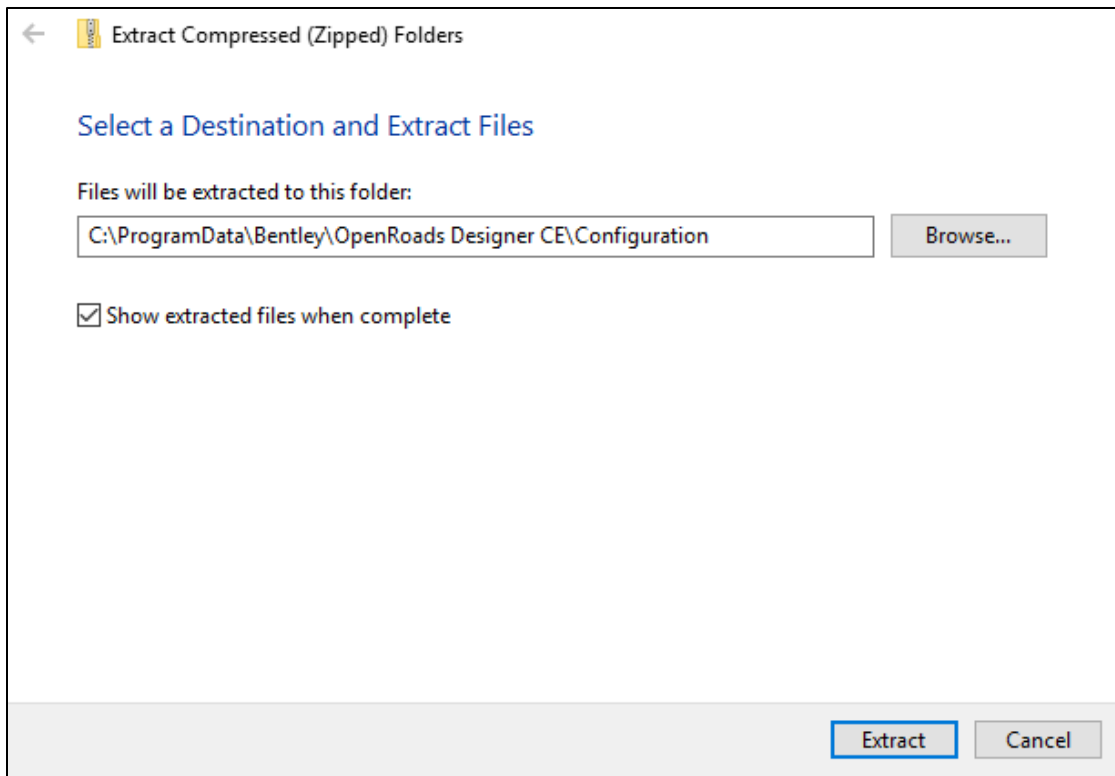
2. Once the zip file is downloaded, extract the contents of the file to the **C:\ProgramData\Bentley\OpenRoads Designer CE\Configuration\** folder.

**NOTE: This is default installation path for OpenRoads Designer workspace configurations.**

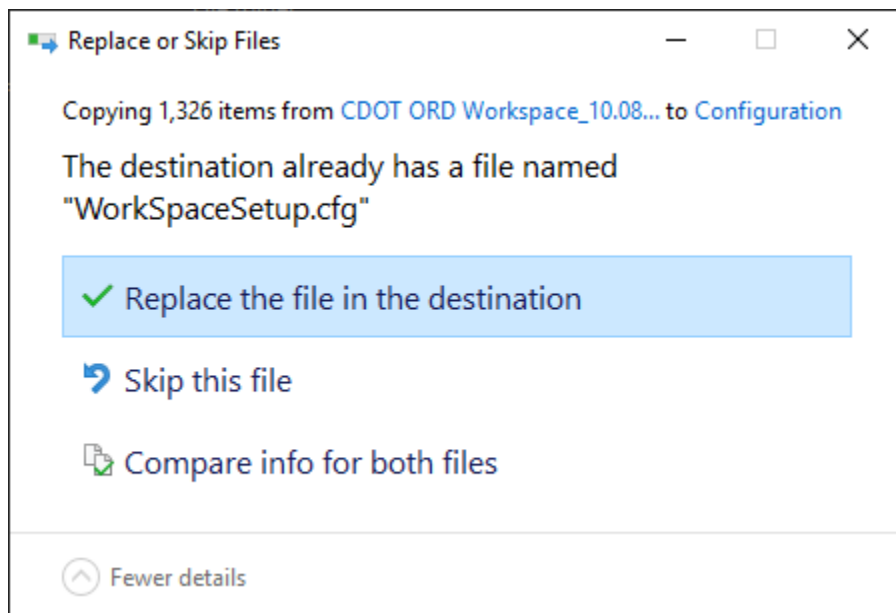
a. Right-click on the .zip file and select **Extract All...**



b. On the *Extract Compressed (Zipped) Folders* dialog, click the **Browse...** button next to the **Files will be extracted to this folder:** field.



- c. Navigate to:  
[C:\ProgramData\Bentley\OpenRoads Designer CE 10.10\Configuration\](#) and click the **Select Folder** button.
- d. Click the **Extract** button on the *Extract Compressed (Zipped) Folders* dialog and the CDOT workspace files are copied to the *default Configuration* folder.



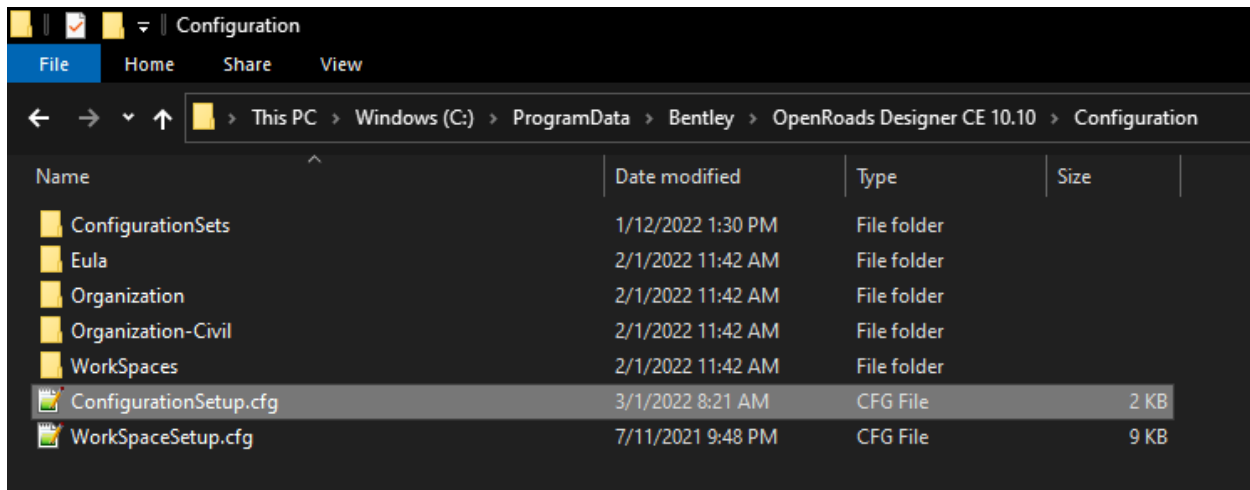
- e. You will be prompted to *Replace or Skip* the **WorkspaceSetup.cfg**. Select **Replace the file in the destination**.
- f. OpenRoads Designer is now setup with CDOTs ORD Workspace.

## Section 2:

### Installing CDOT ORD Workspace (Option 2): Server Location (Multiple Users)/ORD Custom Installation Configuration:

#### Setting up the Custom Configuration Paths and CFGs:

1. Create a Custom Folder on a server or drive. The folder can be named any name desired (Example: ORD\_Custom\_Configurations).
2. Open Windows File explorer, navigate to the `C:\ProgramData\Bentley\OpenRoads Designer CE 10.10\Configuration\` folder.
3. Open the **ConfigurationSetup.cfg** file in Notepad.



4. In the [General] section go to the line `_USTN_CUSTOM_CONFIGURATION =` and enter the path to the Custom Configuration folder created in **Step 1**.

#### Example:

`_USTN_CUSTOM_CONFIGURATION=D:/ORD_Custom_Configuration/`

**NOTE:** Be sure to use forward slashes (/) when defining a path in a Bentley .cfg file. Also, make sure to place a forward at the end of the path.

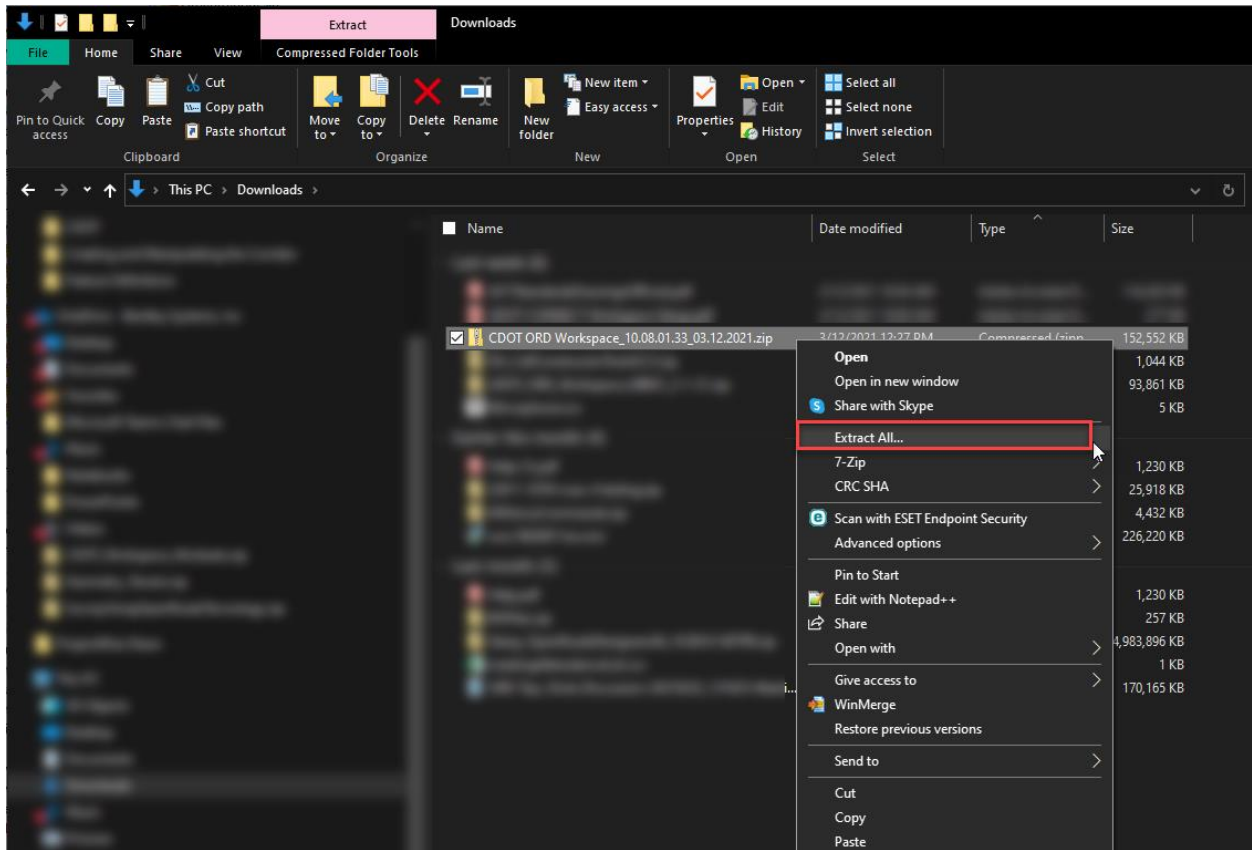
```
#-----  
# START: The section defines user selection at the time of installation.  
# These lines are generated by installer.  
[General]  
#_USTN_USER_CONFIGURATION_LABEL=  
  
#Standard Custom Configuration  
_USTN_CUSTOM_CONFIGURATION=D:/ORD_Custom_Configuration/  
  
[SetConfiguration]  
%if !defined (_USTN_USER_CONFIGURATION)  
%if defined (_USTN_CUSTOM_CONFIGURATION) && ($_USTN_CUSTOM_CONFIGURATION) != "" &&  
_USTN_CONFIGURATION =  
%endif  
%endif
```

5. Save and close the *ConfigurationSetup.cfg* file.

### Installing the CDOT Workspace to a Custom Configuration Path:

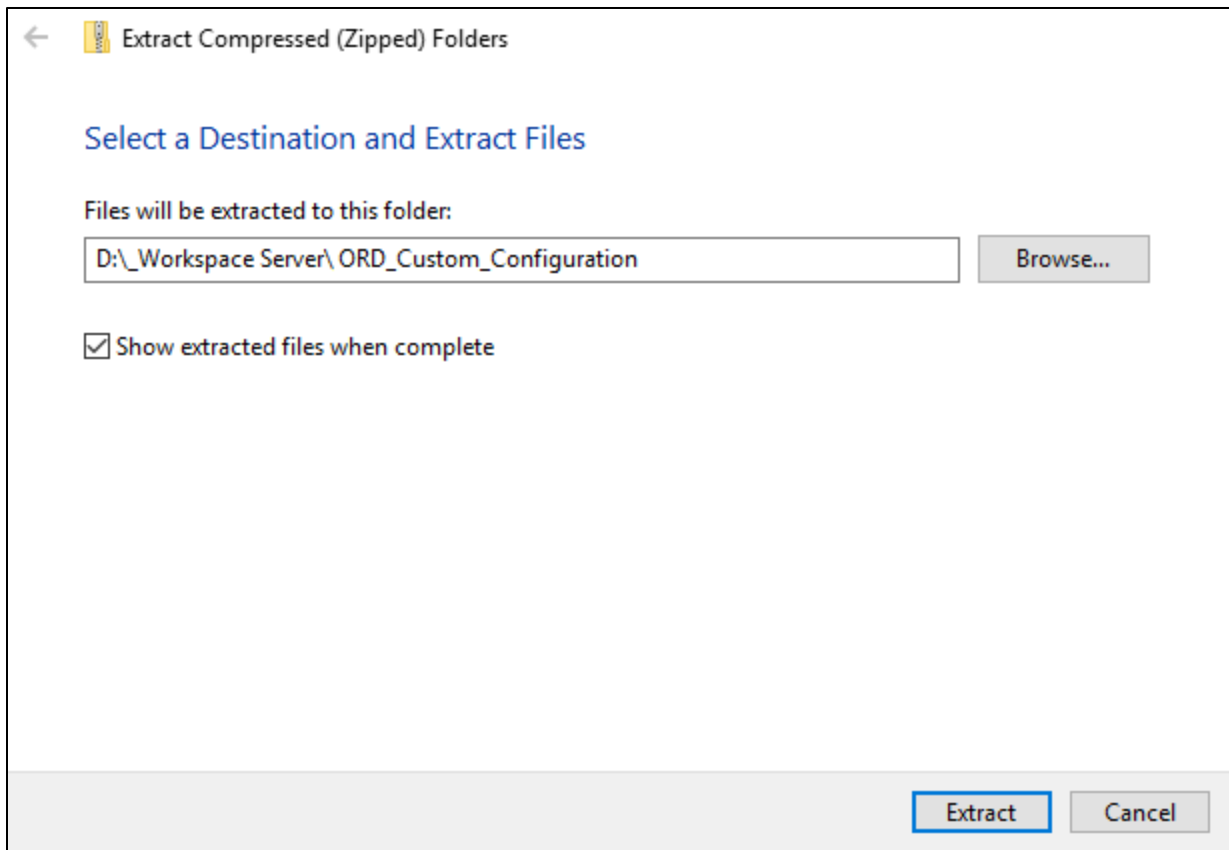
1. Download the ***CDOT\_ORD\_Workspace\_2021.R1-03\_10.10.01.03\_04.25.2023.zip*** file from the CDOT Website.
2. Once the zip file is downloaded, extract the contents of the file to the ***Custom Configuration*** folder created in ***Step 1*** of the previous section: [Setting Up Custom Configuration Paths and CFGs](#).

a. Right-click on the .zip file and select **Extract All...**



b. On the *Extract Compressed (Zipped) Folders* dialog, click the **Browse...** button next to the **Files will be extracted to this folder:** field.



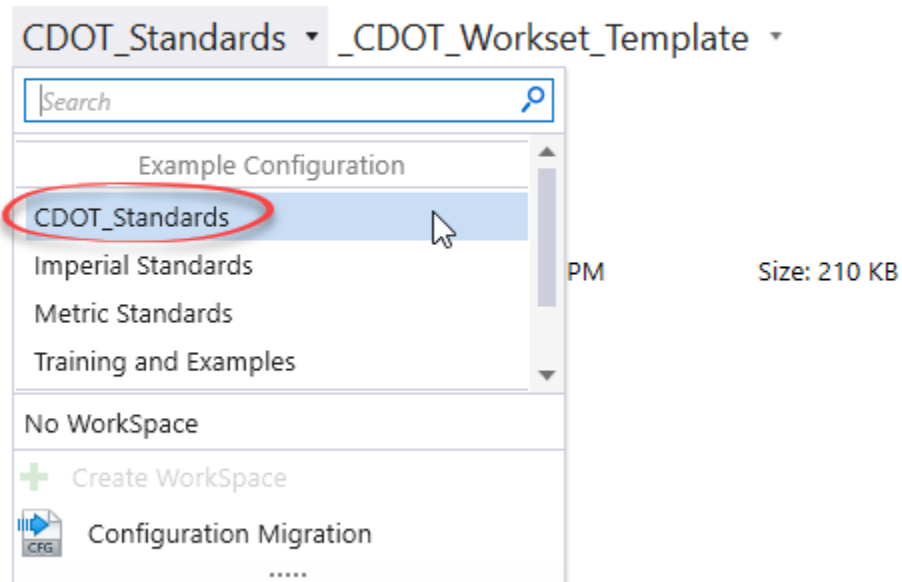


- c. Navigate to the **Custom Configuration** Path/folder click the **Select Folder** button.
- d. Click the **Extract** button on the *Extract Compressed (Zipped) Folders* dialog and the CDOT workspace files are copied to the *Custom Configuration* folder.
- e. OpenRoads Designer is now setup with the CDOT Workspace using a *Custom Configuration* path.

## Running OpenRoads Designer with the CDOT Workspace:

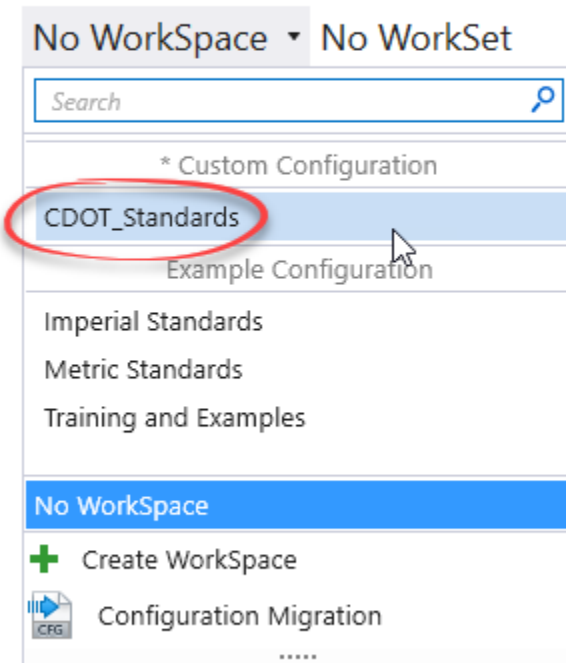
1. Launch OpenRoads Designer.
2. Under the *WorkSpace Menu* select the **CDOT\_Standards** option.
  - a. The **LOCAL/SINGLE USER (DEFAULT) CONFIGURATION** installed workspace will load under *Example Configuration*.

## OpenRoads Designer CONNECT Edition



- b. The **CUSTOM CONFIGURATION** installed workspace will load under *Custom Configuration*.

# OpenRoads Designer CONNECT Edition



Use for a file, start by clicking on Browse.

3. The *CDOT ORD WorkSpace* is delivered with a Workset Template for creating CDOT Worksets (Projects). Please use this template to help with creating CDOT Projects. See the Bentley Communities page for help on creating Worksets:

[https://communities.bentley.com/products/building/building\\_analysis\\_design/w/building\\_analysis\\_and\\_design\\_wiki/47020/creating-a-project---workspaces-and-worksets-explained](https://communities.bentley.com/products/building/building_analysis_design/w/building_analysis_and_design_wiki/47020/creating-a-project---workspaces-and-worksets-explained)