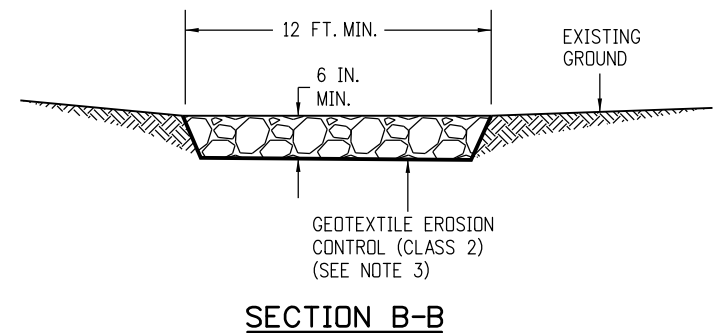
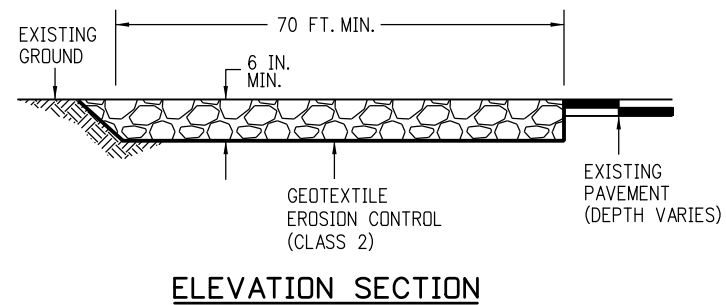
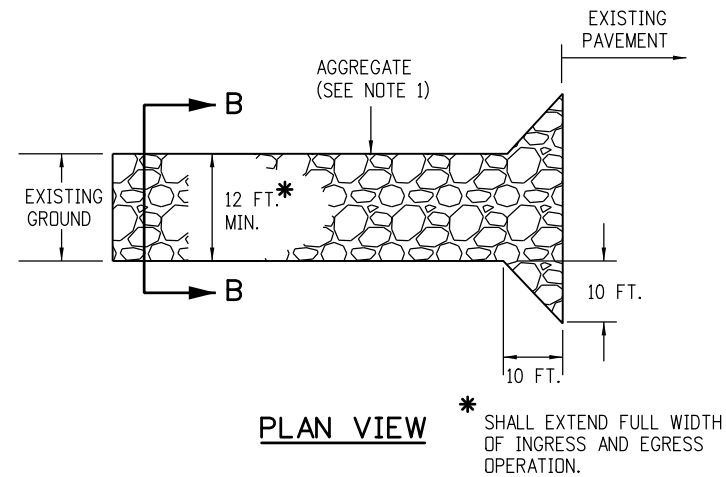


NOTES:

1. A FENCE (PLASTIC) CONFORMING TO SECTION 607 SHALL BE INSTALLED AROUND THE CONCRETE WASHOUT AREA, EXCEPT AT THE OPENING.
2. THE CONCRETE WASHOUT SIGN SHALL HAVE LETTERS AT LEAST 3 INCHES HIGH AND CONFORM TO SUBSECTION 630.02.
3. ALL MATERIALS AND LABOR TO COMPLETE THE CONCRETE WASHOUT STRUCTURE SHALL BE INCLUDED IN THE COST OF WORK AND NOT PAID FOR SEPARATELY.
4. THE BOTTOM OF EXCAVATION SHALL BE A MINIMUM OF FIVE FEET ABOVE GROUND WATER. IF NOT, THE BOTTOM OF EXCAVATION SHALL BE IN ACCORDANCE WITH 208.02 (j).
5. THE PAY ITEM NUMBER FOR CONCRETE WASHOUT STRUCTURE (EACH) IS 208-00045.

CONCRETE WASHOUT STRUCTURE

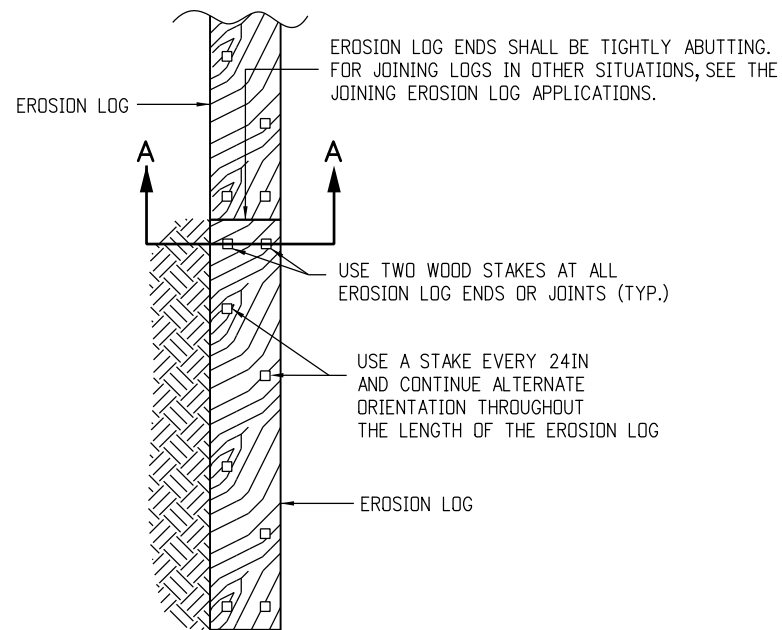


NOTES:

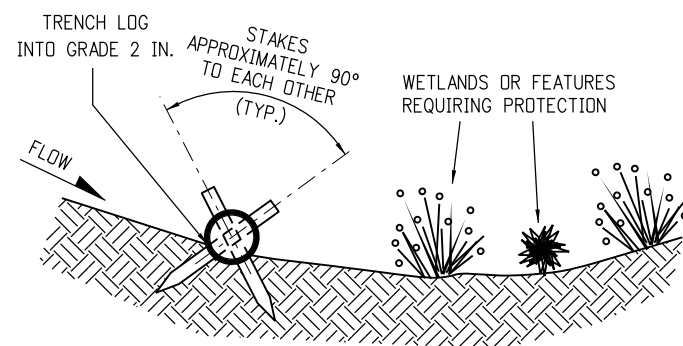
1. AGGREGATE SHALL CONFORM TO SUBSECTION 208.02 (i).
2. THE CONTRACTOR SHALL PROTECT CURB AND GUTTER THAT CROSSES THE ENTRANCE FROM DAMAGE, WHILE NOT BLOCKING FLOW OF WATER THRU STRUCTURE. PROTECTION OF THE CURB AND GUTTER SHALL BE INCLUDED IN THE COST OF WORK AND NOT PAID FOR SEPARATELY.
3. GEOTEXTILE SHALL CONFORM TO SUBSECTION 712.08.
4. ALL MATERIALS AND LABOR TO COMPLETE THE VEHICLE TRACKING PAD SHALL BE INCLUDED IN THE COST OF WORK AND NOT PAID FOR SEPARATELY.
5. THE PAY ITEM NUMBER FOR VEHICLE TRACKING PAD (EACH) IS 208-00070.

VEHICLE TRACKING PAD

Computer File Information		Sheet Revisions		<div>Colorado Department of Transportation</div> <div> 2829 West Howard Place CDOT HQ, 3rd Floor Denver, CO 80204 Phone: 303-757-9021 FAX: 303-757-9868</div> <div>Project Development Branch</div> <div>JBK</div>	TEMPORARY EROSION CONTROL		STANDARD PLAN NO.
Creation Date: 07/31/19	(R-X)	Date:	Comments		M-208-1		Standard Sheet No. 1 of 11
Designer Initials: JBK	(R-X)				Issued by the Project Development Branch: July 31, 2019		Project Sheet Number:
Last Modification Date: 07/31/19	(R-X)						
Detailer Initials: LTA	(R-X)						
CAD Ver.: MicroStation V8 Scale: Not to Scale Units: English	(R-X)						

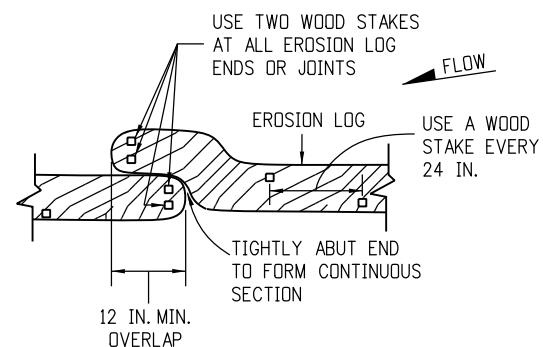


PLAN VIEW

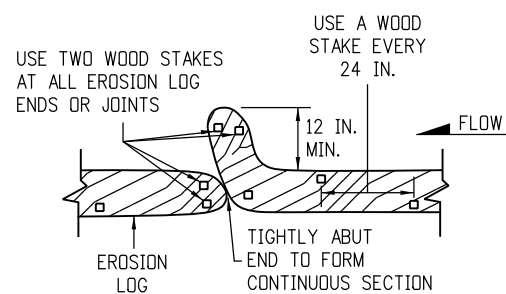


SECTION A-A

TYPICAL STAKE INSTALLATION



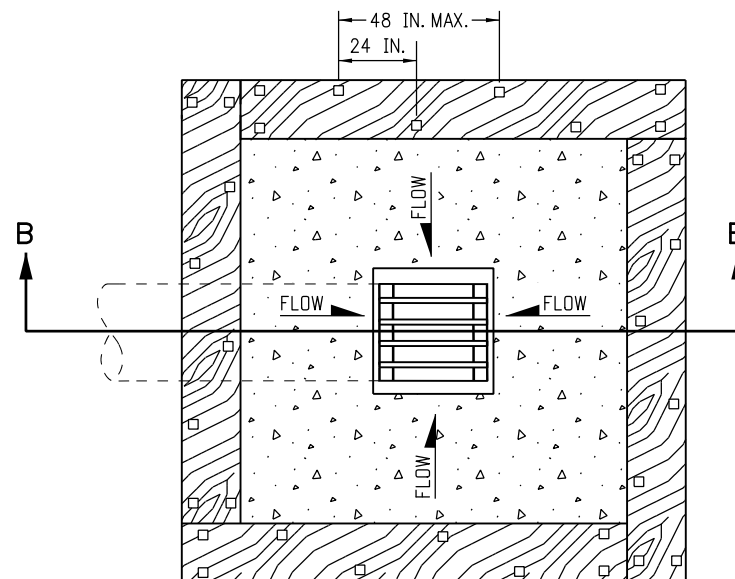
OVERLAP JOINING DETAIL



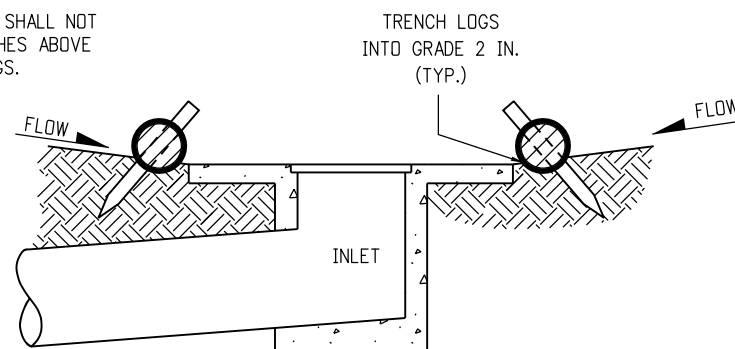
J-HOOK JOINING DETAIL

JOINING EROSION LOG APPLICATIONS

EROSION LOGS PAY ITEMS	
NUMBER	DESCRIPTION
208-00012	TYPE 1 (9 IN.)
208-00002	TYPE 1 (12 IN.)
208-00013	TYPE 1 (20 IN.)
208-00007	TYPE 2 (8 IN.)
208-00008	TYPE 2 (12 IN.)
208-00009	TYPE 2 (18 IN.)
208-00022	TYPE 3 (9 IN.)
208-00023	TYPE 3 (12 IN.)
208-00024	TYPE 3 (20 IN.)



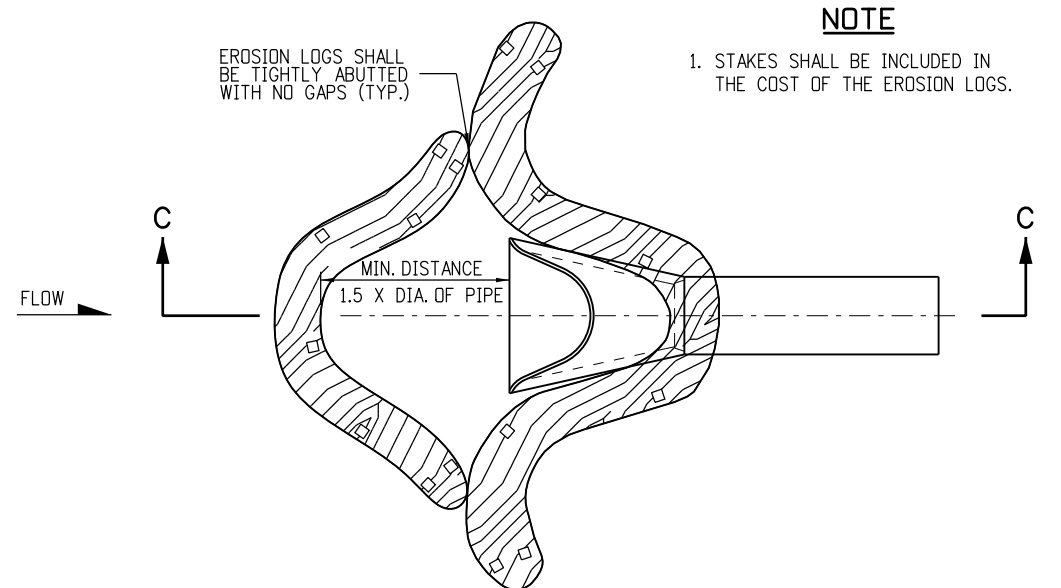
PLAN VIEW



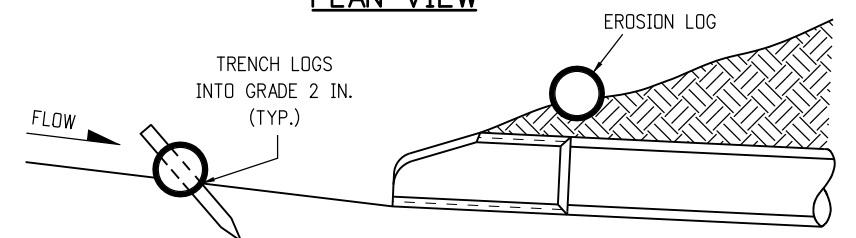
SECTION B-B

NOTE: LOCATE EROSION LOGS AT THE OUTSIDE EDGE OF THE CONCRETE APRON.

EROSION LOG FILTER AT DROP INLET

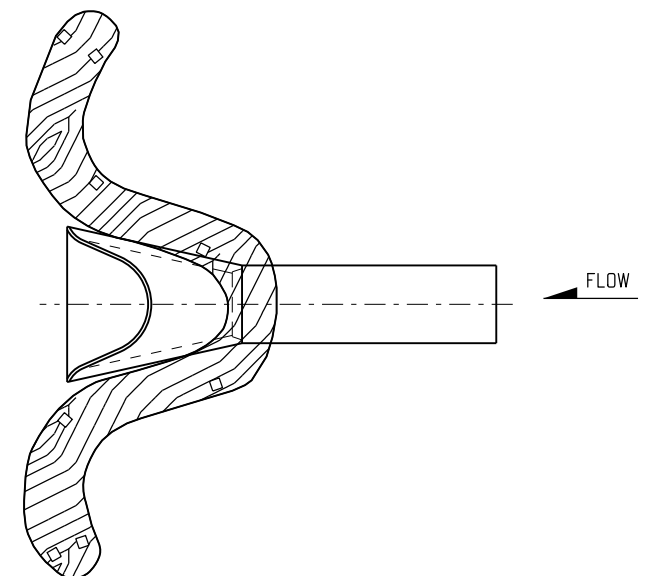


PLAN VIEW




SECTION C-C
(NOT ALL LOGS SHOWN)

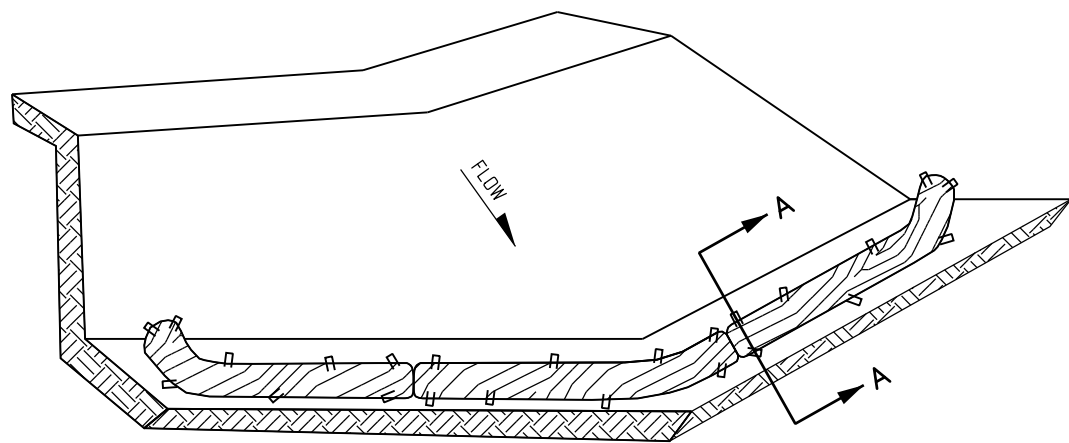
EROSION LOG CULVERT INLET PROTECTION



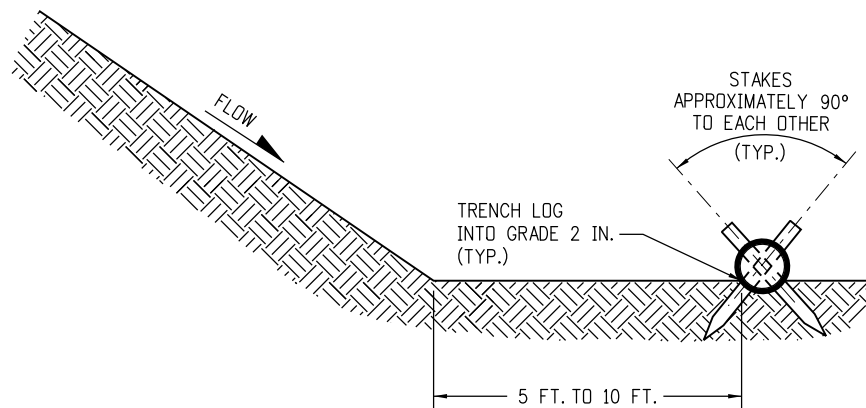
EROSION LOG CULVERT OUTLET PROTECTION

EROSION LOG APPLICATIONS

Computer File Information		<div>(R-X)</div> <div>(R-X)</div> <div>(R-X)</div> <div>(R-X)</div>	Sheet Revisions		<div>Colorado Department of Transportation</div> <div><div></div><div>2829 West Howard Place CDOT HQ, 3rd Floor Denver, CO 80204 Phone: 303-757-9021 FAX: 303-757-9868</div></div> <div>Project Development Branch</div> <div>JBK</div>	TEMPORARY EROSION CONTROL		STANDARD PLAN NO.	
Creation Date: 07/31/19			Date:	Comments		M-208-1		Standard Sheet No. 2 of 11	
Designer Initials: JBK									
Last Modification Date: 07/31/19									
Detailer Initials: LTA						Issued by the Project Development Branch: July 31, 2019		Project Sheet Number:	
CAD Ver.: MicroStation V8 Scale: Not to Scale Units: English									



ISOMETRIC VIEW



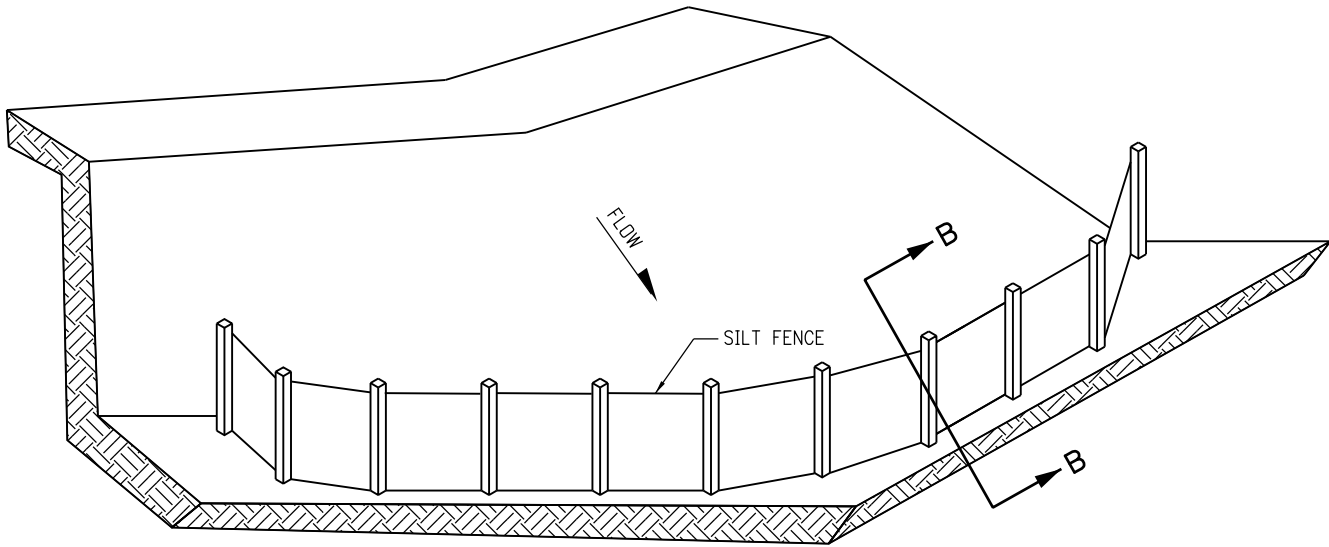
SECTION A-A

NOTE: THE TOPS OF ALL STAKES SHALL NOT EXTEND MORE THAN 2 INCHES ABOVE THE TOPS OF EROSION LOGS.

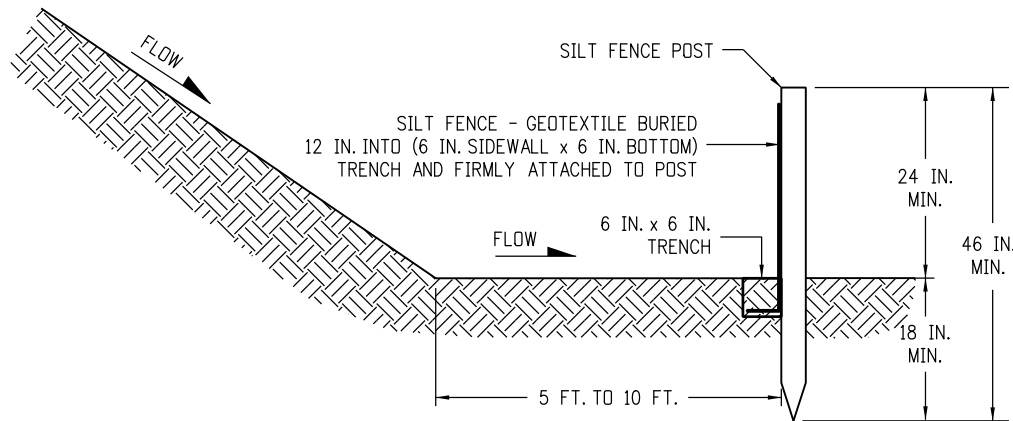
EROSION LOGS PAY ITEMS	
NUMBER	DESCRIPTION
208-00012	TYPE 1 (9 IN.)
208-00002	TYPE 1 (12 IN.)
208-00013	TYPE 1 (20 IN.)
208-00007	TYPE 2 (8 IN.)
208-00008	TYPE 2 (12 IN.)
208-00009	TYPE 2 (18 IN.)
208-00022	TYPE 3 (9 IN.)
208-00023	TYPE 3 (12 IN.)
208-00024	TYPE 3 (20 IN.)

- NOTES:
1. EROSION LOGS USED AT TOE OF SLOPE SHALL BE PLACED 5 TO 10 FEET BEYOND TOE OF SLOPE TO PROVIDE STORAGE CAPACITY.
 2. EROSION LOGS SHALL BE PLACED ON THE CONTOUR WITH ENDS FLARED UP SLOPE.
 3. SEE SHEET 2 OF 11 FOR JOINING LOGS DETAIL.

EROSION LOG TOE OF SLOPE PROTECTION



ISOMETRIC VIEW



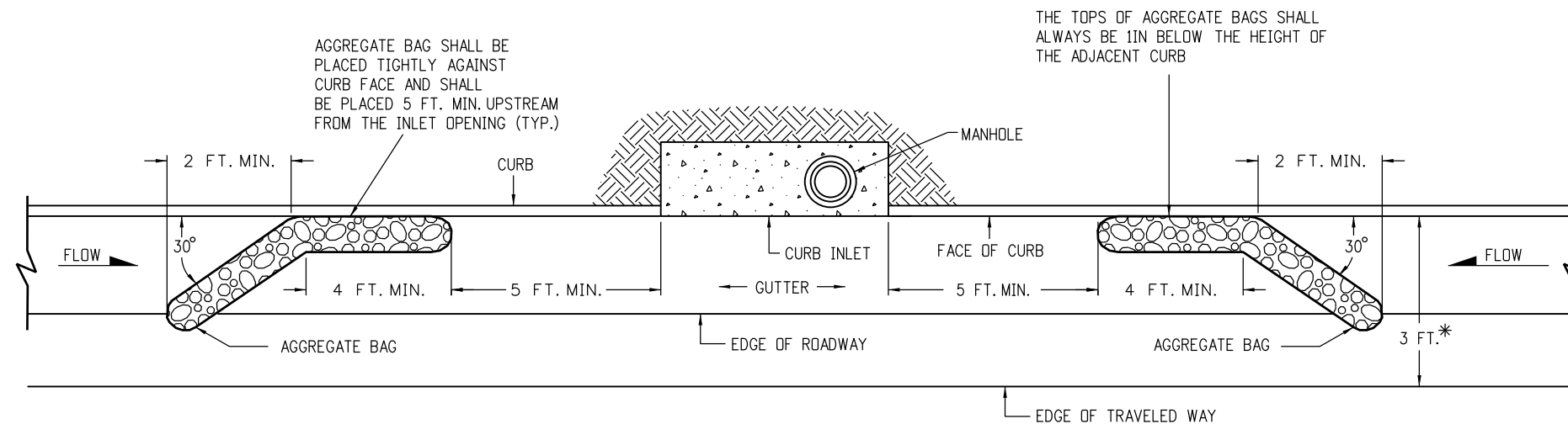
SECTION B-B

SILT FENCE TOE OF SLOPE PROTECTION

NOTE: THE PAY ITEM NUMBER FOR SILT FENCE (LF) IS 208-00020.

TOE OF SLOPE PROTECTION APPLICATIONS

Computer File Information		Sheet Revisions		Colorado Department of Transportation 2829 West Howard Place CDOT HQ, 3rd Floor Denver, CO 80204 Phone: 303-757-9021 FAX: 303-757-9868 Project Development Branch JBK	TEMPORARY EROSION CONTROL Issued by the Project Development Branch: July 31, 2019	STANDARD PLAN NO.	
Creation Date: 07/31/19	(R-X)	Date:	Comments			M-208-1	
Designer Initials: JBK	(R-X)					Standard Sheet No. 3 of 11	
Last Modification Date: 07/31/19	(R-X)					Project Sheet Number:	
Detailer Initials: LTA	(R-X)						
CAD Ver.: MicroStation V8 Scale: Not to Scale Units: English	(R-X)						

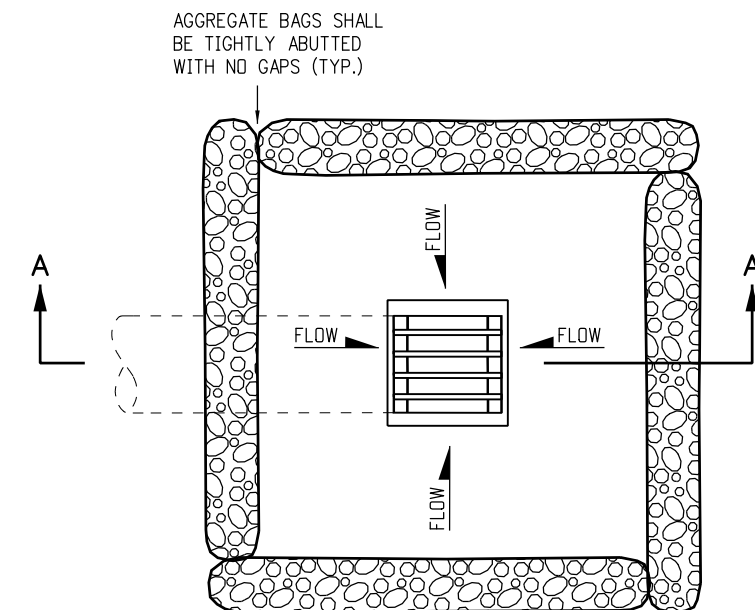


PLAN VIEW

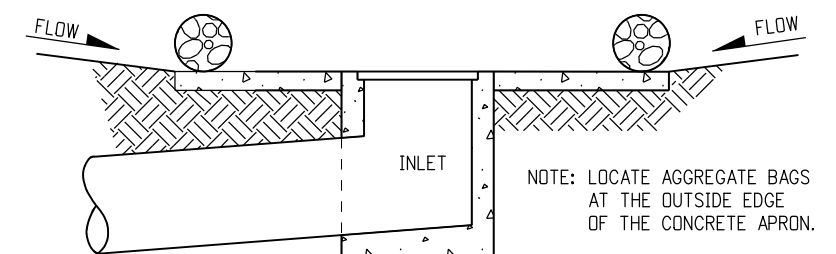
* NOTE: USE AGGREGATE BAGS ONLY WHEN THERE IS A MINIMUM CLEARANCE OF 3 FEET FROM THE EDGE OF THE TRAVELED WAY (INCLUDING CONDITIONS DURING DETOURS) TO THE FACE OF CURB.

LENGTH (L) OF INLET FT.	NUMBER OF AGGREGATE BAGS UPSTREAM OF INLET
0 - 5	1
6 - 10	2
L > 10	3

AGGREGATE BAGS AT STORM DRAIN INLET (TYPE I)



PLAN VIEW




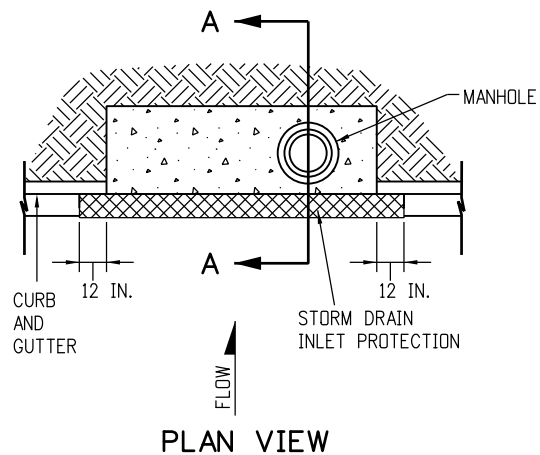
SECTION A-A

AGGREGATE BAGS AT DROP INLET

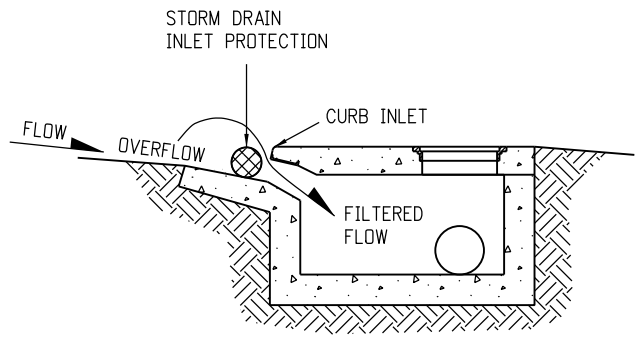
AGGREGATE BAG APPLICATIONS

NOTE: THE PAY ITEM NUMBER FOR AGGREGATE BAG (LF) IS 208-00035

Computer File Information		Sheet Revisions		Colorado Department of Transportation  2829 West Howard Place CDDT HQ, 3rd Floor Denver, CO 80204 Phone: 303-757-9021 FAX: 303-757-9868 Project Development Branch JBK	TEMPORARY EROSION CONTROL	STANDARD PLAN NO.
Creation Date: 07/31/19	(R-X)	Date:	Comments			M-208-1
Designer Initials: JBK	(R-X)					Standard Sheet No. 4 of 11
Last Modification Date: 07/31/19	(R-X)					
Detailer Initials: LTA	(R-X)					
CAD Ver.: MicroStation V8 Scale: Not to Scale Units: English	(R-X)				Issued by the Project Development Branch: July 31, 2019	Project Sheet Number:



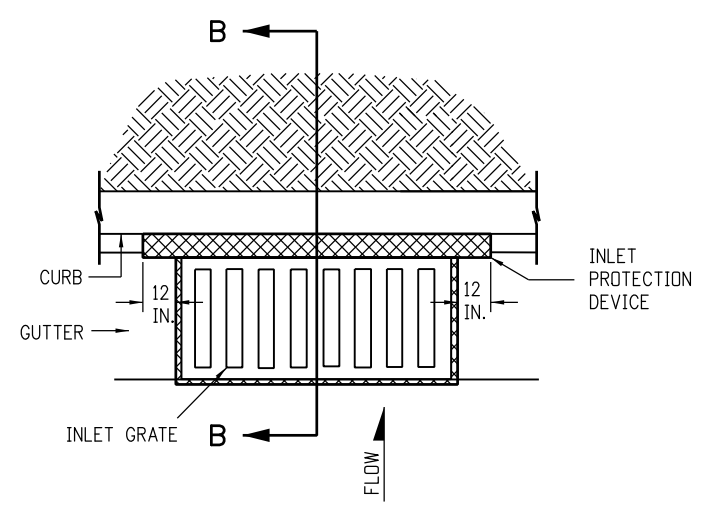
PLAN VIEW



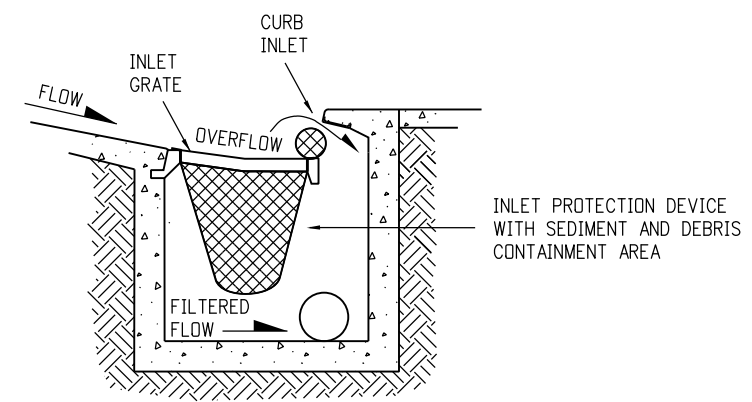
SECTION A-A

STORM DRAIN INLET PROTECTION (TYPE I)

- NOTES:
1. INLET PROTECTION DEVICE SHALL EXTEND 12 INCHES PAST EACH END OF THE INLET.
 2. THE PAY ITEM NUMBERS FOR STORM DRAIN INLET PROTECTION (TYPE I) ARE 208-00051 (LF), 208-00053 84 INCHES (EACH), 208-00057 144 INCHES (EACH), AND 208-00058 204 INCHES (EACH).
 3. FOR STORM DRAIN INLET TYPES I AND II, IF THERE IS A MINIMUM CLEARANCE OF 3 FEET FROM THE EDGE OF THE TRAVELED WAY TO THE FACE OF CURB, USE THE AGGREGATE BAGS AT STORM DRAIN INLET (TYPE I) DETAIL ON SHEET 4 INSTEAD.



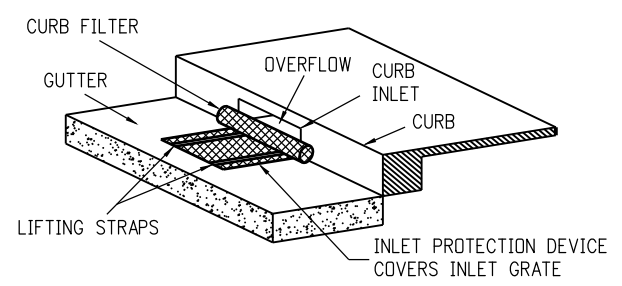
PLAN VIEW



SECTION B-B

OPTION A

STORM DRAIN INLET PROTECTION (TYPE II)

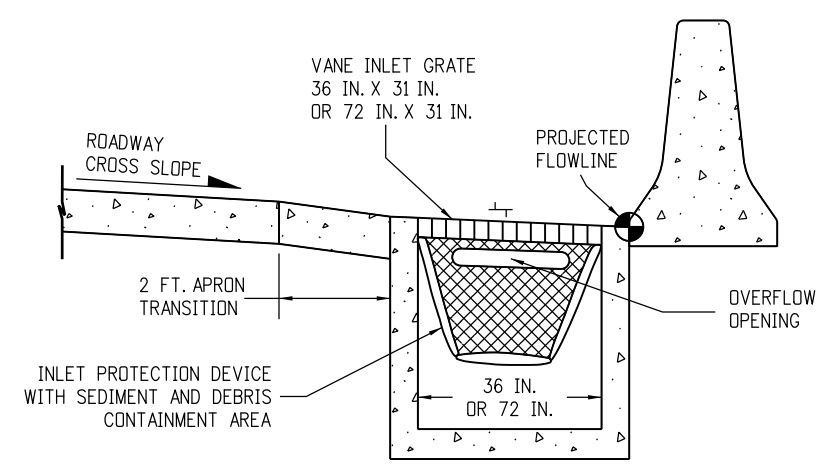


ISOMETRIC VIEW

OPTION B

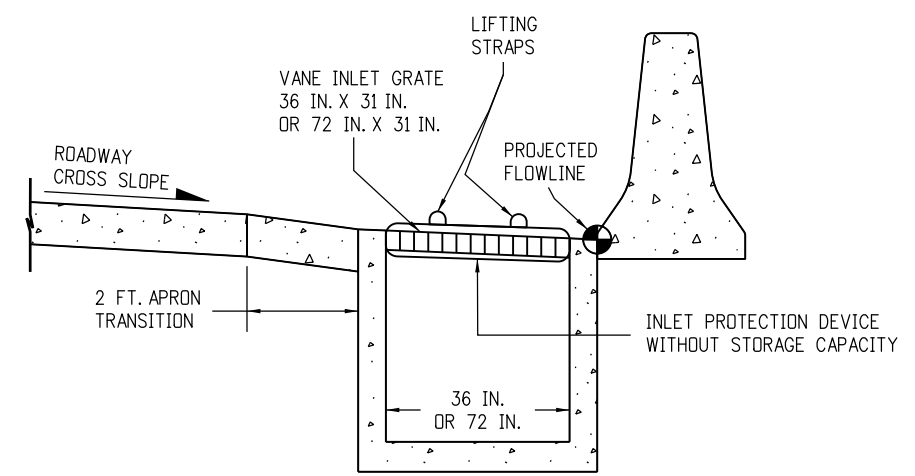
STORM DRAIN INLET PROTECTION (TYPE II)

NOTE: THE PAY ITEM NUMBERS FOR STORM DRAIN INLET PROTECTION (TYPE II) ARE 208-00054 (EACH).



OPTION A

STORM DRAIN INLET PROTECTION (TYPE III)



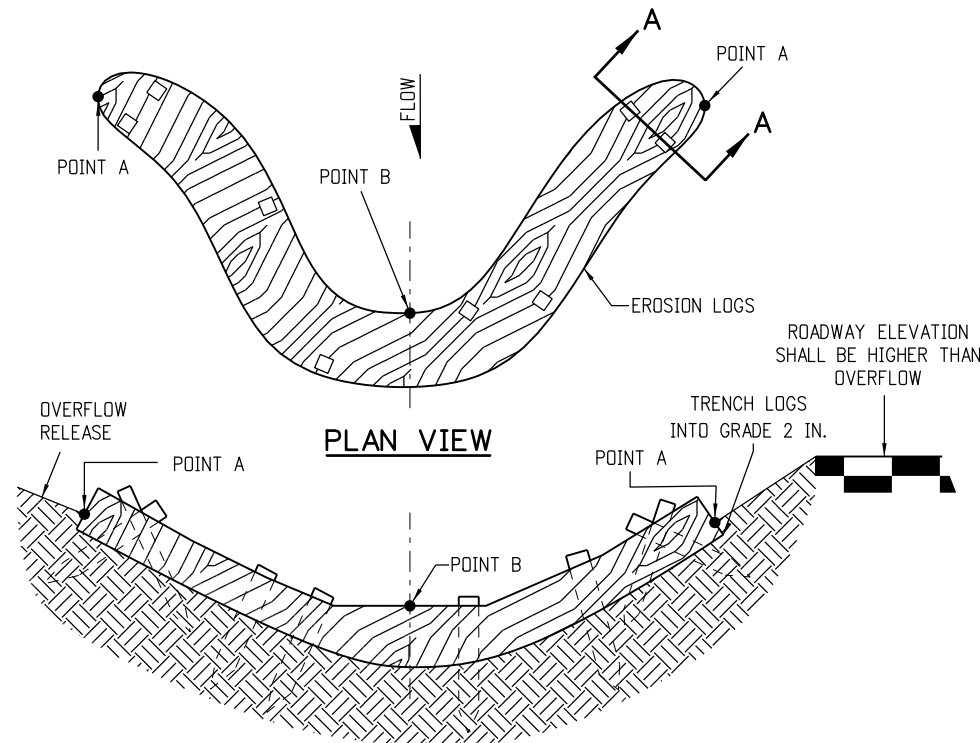
OPTION B

STORM DRAIN INLET PROTECTION (TYPE III)

NOTE: THE PAY ITEM NUMBER FOR STORM DRAIN INLET PROTECTION (TYPE III) (EACH) IS 208-00056.

STORM DRAIN INLET PROTECTION TYPES

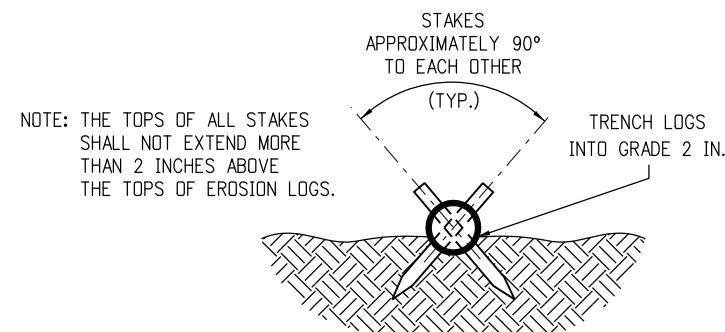
Computer File Information		Sheet Revisions		<div> <div>Colorado Department of Transportation</div> <div>  <div> 2829 West Howard Place CDOT HQ, 3rd Floor Denver, CO 80204 Phone: 303-757-9021 FAX: 303-757-9868 </div> </div> <div>Project Development Branch</div> <div>JBK</div> </div>	TEMPORARY EROSION CONTROL		STANDARD PLAN NO.
Creation Date: 07/31/19	(R-X)	Date:	Comments				M-208-1
Designer Initials: JBK	(R-X)						Standard Sheet No. 5 of 11
Last Modification Date: 07/31/19	(R-X)			Issued by the Project Development Branch: July 31, 2019			Project Sheet Number:
Detailer Initials: LTA	(R-X)						
CAD Ver.: MicroStation V8 Scale: Not to Scale Units: English	(R-X)						



PLAN VIEW

NOTE: POINTS "A" SHALL BE A MINIMUM 4 IN. HIGHER THAN POINT "B".

ELEVATION

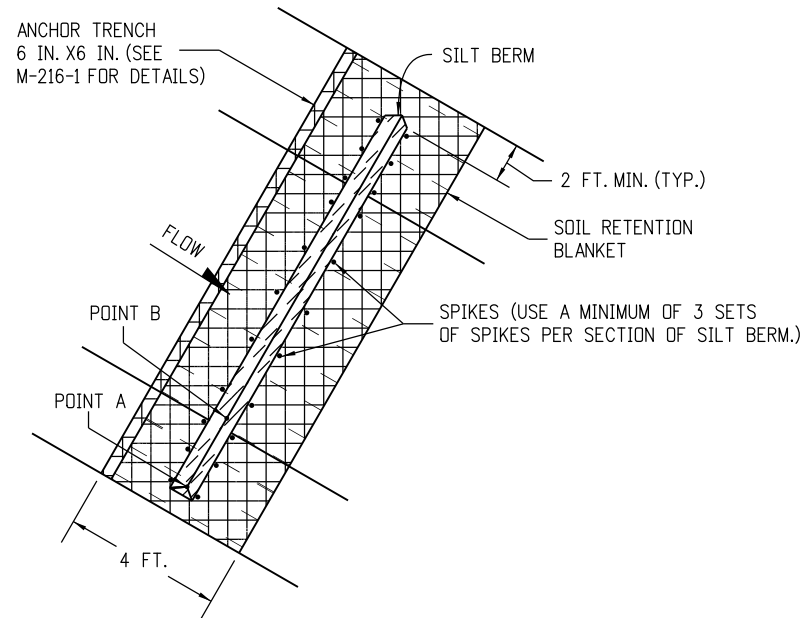


SECTION A-A

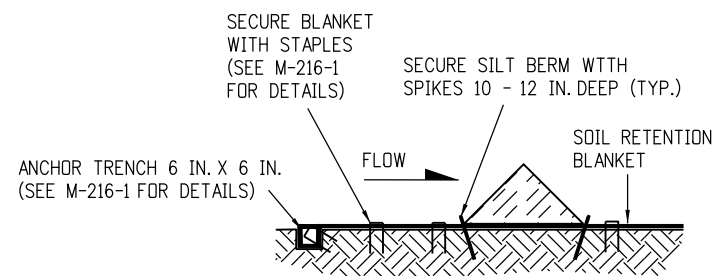
NOTES:

1. EROSION LOGS SHALL BE EMBEDDED 2 INCHES INTO THE SOIL.
2. EROSION LOGS SHALL BE TIGHTLY ABUTTED WITH NO GAPS.
3. V-SHAPED TEMPORARY DITCHES SHALL NOT BE USED. DITCHES SHALL BE GRADED IN A PARABOLIC OR TRAPEZOIDAL SHAPE.

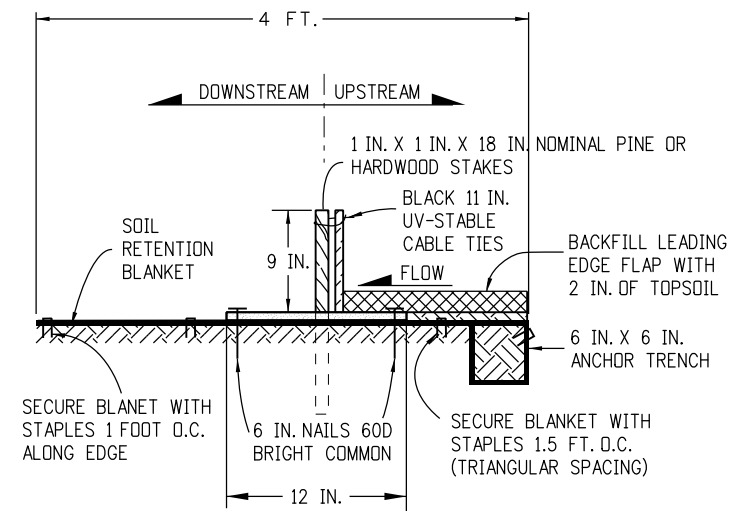
EROSION LOG INSTALLATION



PLAN VIEW



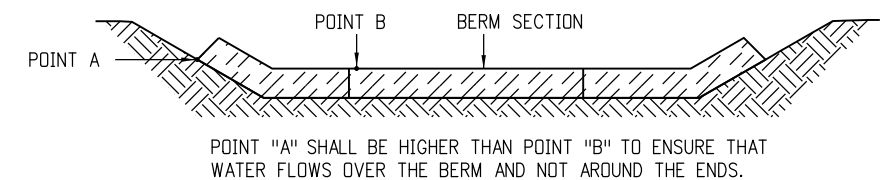
SILT BERM (1) SECTION VIEW



NOTES:

1. MINIMUM 4 NAILS PER SEGMENT (UPSTREAM).
2. MINIMUM 2 NAILS PER SEGMENT (DOWNSTREAM).
3. MINIMUM 2 WOOD STAKES PER SEGMENT.

SILT BERM (2) SECTION VIEW



FRONT VIEW

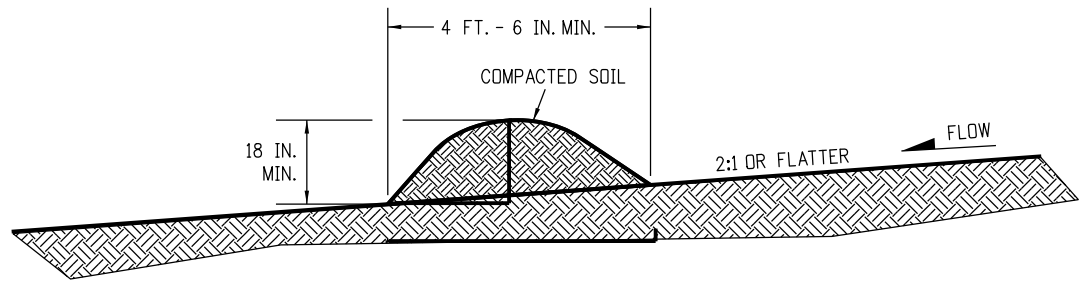
NOTES:

1. ANCHOR SOIL RETENTION BLANKET INTO TRENCH WITH 8 INCHES MIN. STAPLES PLACED AT 1 FOOT INTERVALS ALONG EDGE.
2. FILL AND COMPACT TRENCH.
3. SECTIONS OF THE SILT BERM SHALL BE OVERLAPPED WITH NO GAPS.
4. FOR SLOPE AND CHANNEL SPACING SEE THE "SECTION VIEW ALONG DITCH FLOWLINE" DETAIL ON SHEET 11 OF 11.
5. SOIL RETENTION BLANKET SHALL ALWAYS BE REQUIRED.
6. THE PAY ITEM NUMBER FOR SILT BERM (LF) IS 208-00004.

SILT BERM INSTALLATION

DRAINAGE DITCH APPLICATIONS

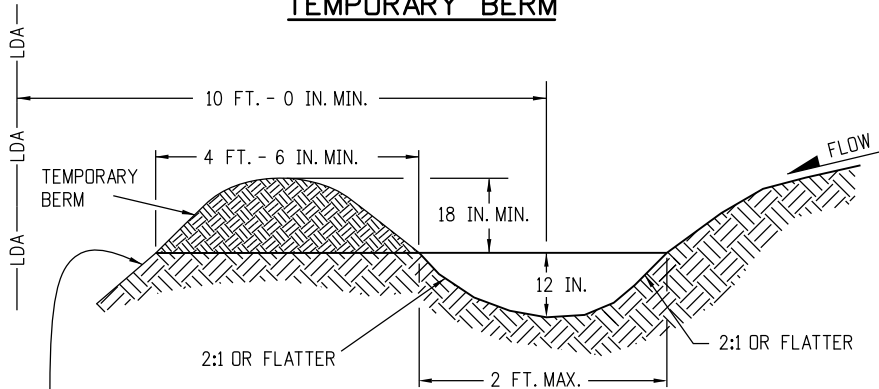
Computer File Information		Sheet Revisions		<div><div><div>Colorado Department of Transportation</div><div><div></div><div>2829 West Howard Place CDOT HQ, 3rd Floor Denver, CO 80204 Phone: 303-757-9021 FAX: 303-757-9868</div></div><div>Project Development Branch</div><div>JBK</div></div></div>	TEMPORARY EROSION CONTROL		STANDARD PLAN NO.	
Creation Date: 07/31/19	<div>(R-X)</div> <div>(R-X)</div> <div>(R-X)</div> <div>(R-X)</div>	Date:	Comments		M-208-1		Standard Sheet No. 6 of 11	
Designer Initials: JBK								
Last Modification Date: 07/31/19								
Detailer Initials: LTA								
CAD Ver.: MicroStation V8 Scale: Not to Scale Units: English					Issued by the Project Development Branch: July 31, 2019		Project Sheet Number:	



NOTES:

1. BERMS SHALL HAVE A HEIGHT OF 18 INCHES, SIDE SLOPES OF 2:1 OR FLATTER AND A MINIMUM BASE WIDTH OF 4 FT.-6 IN.
2. BERMS SHALL BE USED TO INTERCEPT AND DIVERT DRAINAGE TO A DESIGNATED OUTLET.
3. BERMS SHALL NOT BE USED WHERE DRAINAGE AREA EXCEEDS 10 ACRES.
4. BERMS SHALL BE CONSTRUCTED OUT OF ACCEPTABLE MATERIAL THAT CAN BE COMPACTED AND RECEIVE AT A MINIMUM HEAVY EQUIPMENT WHEEL ROLLED COMPACTION.
5. TEMPORARY BERMS SHALL BE CONSTRUCTED OUT OF EMBANKMENT (SUBSOIL) AND IN NO CIRCUMSTANCE CONSTRUCTED OUT OF SALVAGED TOPSOIL.
6. THE PAY ITEM NUMBER FOR TEMPORARY BERM (LF) IS 208-00300.

TEMPORARY BERM

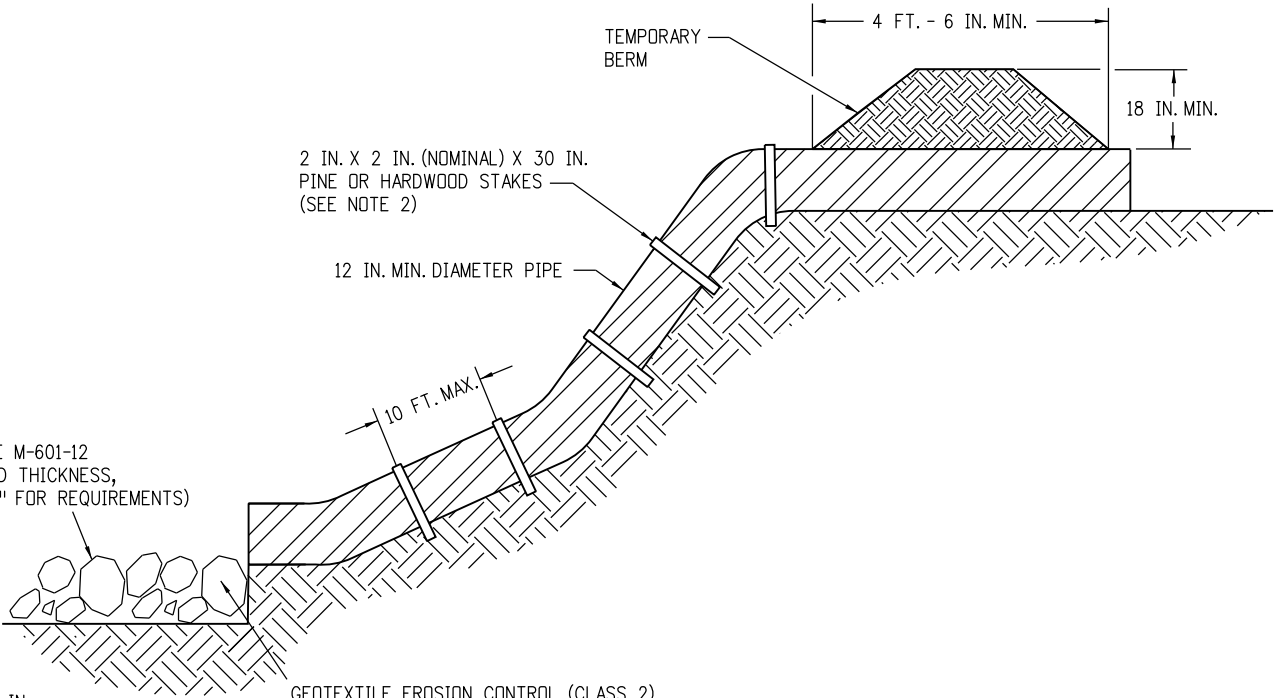


FOR BERMS TALLER THAN 2 FT.,
INSTALL TOE OF SLOPE CONTROL MEASURES.
SEE SHEET 3 OF 11 FOR DETAILS.

NOTES:

1. TEMPORARY DIVERSION DITCHES SHALL BE CONSTRUCTED ACROSS THE SLOPE TO INTERCEPT RUNOFF AND DIRECT IT TO A STABLE OUTLET OR SEDIMENT TRAP.
2. USE THE TEMPORARY DIVERSION DITCH IMMEDIATELY ABOVE A NEW CUT, FILL SLOPE, OR AROUND THE PERIMETER OF A DISTURBED AREA.
3. THE GRADIENT ALONG THE FLOW PATH SHALL HAVE A POSITIVE GRADE TO ASSURE DRAINAGE, BUT SHALL NOT BE SO STEEP AS TO RESULT IN EROSION DUE TO HIGH VELOCITY.
4. THE DIVERSION FLOWLINE SHALL ALWAYS BE LOCATED A MINIMUM 10 FEET FROM THE OUTSIDE LIMITS OF DISTURBED AREA BOUNDARY.
5. THE PAY ITEM NUMBER FOR TEMPORARY DIVERSION (LF) IS 208-00301.

TEMPORARY DIVERSION



* RIPRAP OUTLET PROTECTION (SEE M-601-12
FOR MIN. HORIZONTAL LAYOUT AND THICKNESS,
AND SPECIFICATION 506 "RIPRAP" FOR REQUIREMENTS)

* RIPRAP SIZE $D_{50} = 6$ IN.
OR AS SHOWN ON THE PLANS.


GEOTEXTILE EROSION CONTROL (CLASS 2)
SHALL ALWAYS BE REQUIRED

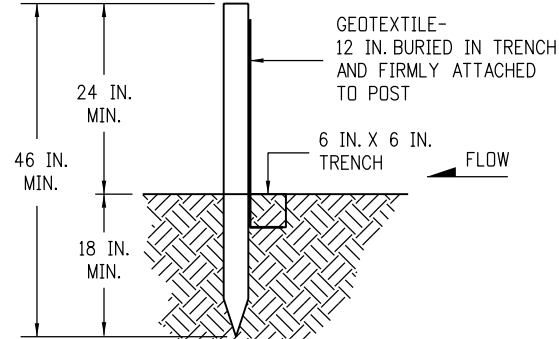
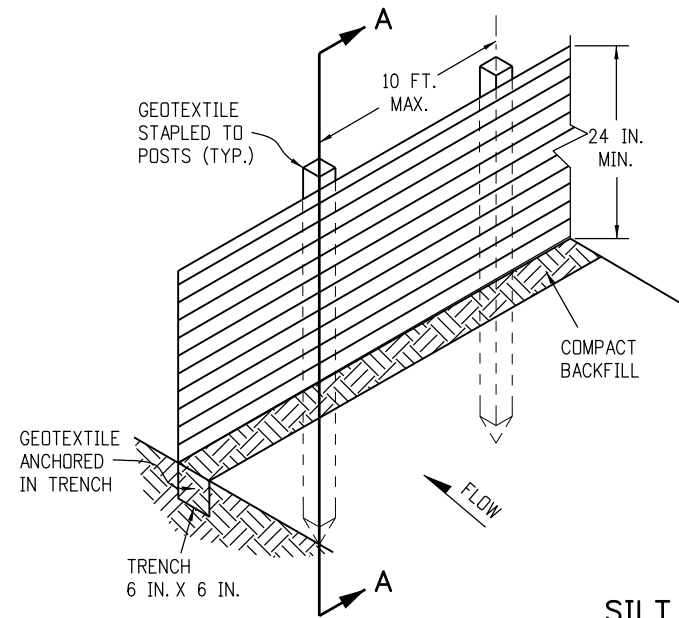
NOTES:

1. ANCHOR SIZE VARIES ACCORDING TO PIPE SIZE
2. TO SECURE THE PIPE, DRIVE STAKES INTO GROUND, THEN TIE A 12 GAUGE WIRE BETWEEN THEM ABOVE AND ACROSS THE PIPE'S WIDTH.
3. THE OUTLET SHALL BE ALIGNED WITH THE FLOW DIRECTION OF THE EXISTING GRADE. PERPENDICULAR DISCHARGE TO A CHANNEL SHALL NOT BE ACCEPTABLE.
4. THE GRADE AROUND THE INLET TO THE PIPE SHALL BE COMPACTED.
5. THE PAY ITEM NUMBER FOR TEMPORARY SLOPE DRAINS (LF) IS 208-00060.

TEMPORARY SLOPE DRAINS

GRADING APPLICATIONS

Computer File Information		<div><div>(R-X)</div><div>(R-X)</div><div>(R-X)</div><div>(R-X)</div></div>	Sheet Revisions		<div><div><div></div><div>Colorado Department of Transportation</div><div>2829 West Howard Place CDOT HQ, 3rd Floor Denver, CO 80204 Phone: 303-757-9021 FAX: 303-757-9868</div><div>Project Development BranchJBK</div></div></div>	TEMPORARY EROSION CONTROL	STANDARD PLAN NO.	
Creation Date: 07/31/19	Date:		Comments	M-208-1				
Designer Initials: JBK				Standard Sheet No. 7 of 11				
Last Modification Date: 07/31/19				Project Sheet Number:				
Detailer Initials: LTA								
CAD Ver.: MicroStation V8 Scale: Not to Scale Units: English				Issued by the Project Development Branch: July 31, 2019				

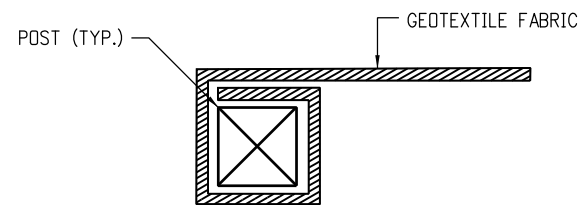


SECTION A-A

SILT FENCE

NOTES:

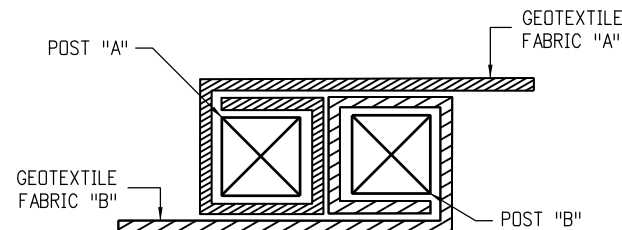
1. GEOTEXTILE SHALL BE ATTACHED TO WOOD POSTS WITH THREE OR MORE STAPLES PER POST. STAPLES SHALL BE HEAVY DUTY WIRE AND AT LEAST 1 INCH LONG.
2. WOOD POST SHALL BE 1 IN. X 1 IN. NOMINAL.
3. THE PAY ITEM NUMBER FOR SILT FENCE (LF) IS 208-00020.
4. THE SILT FENCE SHALL BE PLACED ON THE CONTOUR (AT THE SAME ELEVATION ± 6 IN.). THE ENDS SHALL BE FLARED UP SLOPE (MINIMUM ELEVATION GAIN OF 18 IN.).



END SECTION DETAIL (PLAN VIEW)

NOTE:

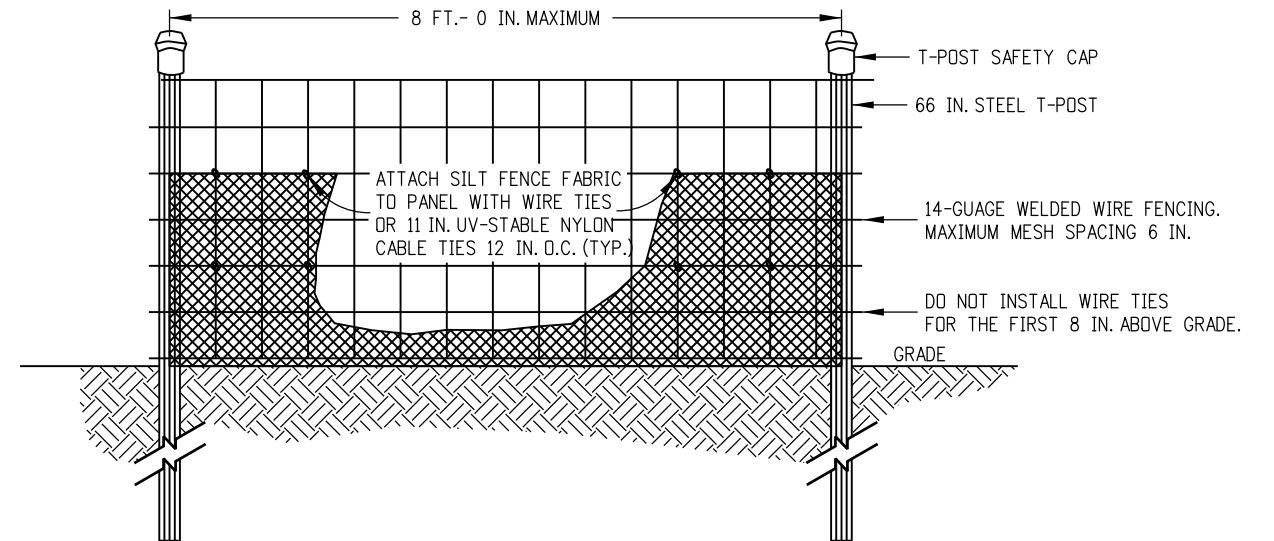
1. THE END OF THE SILT FENCE FABRIC SHALL BE WRAPPED APPROX. 6 INCHES AROUND A WOODEN POST ONE FULL TURN, THEN SECURED ALONG THE POST WITH 6 HEAVY DUTY WIRE STAPLES AT LEAST 1 INCH LONG.



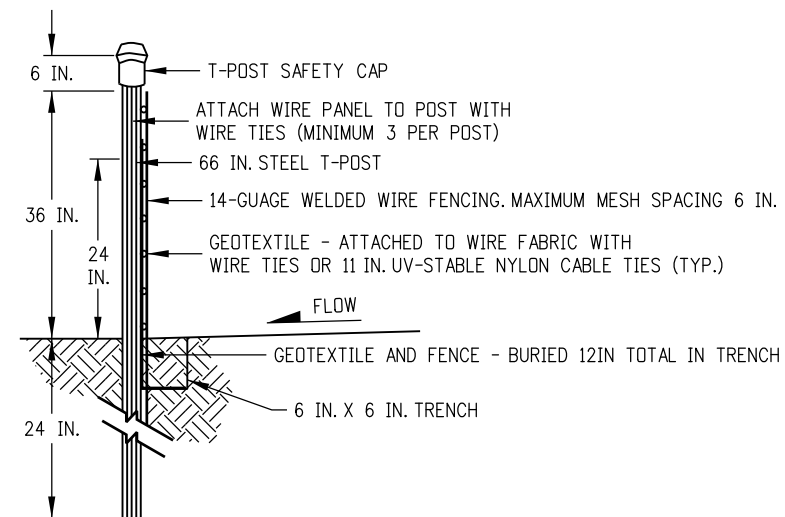
JOINING SECTION DETAIL (PLAN VIEW)

NOTES:

1. THE ENDS OF THE SILT FENCE FABRIC SHALL BE JOINED TOGETHER BY WRAPPING APPROX. 6 INCHES OF EACH END AROUND A WOODEN POST ONE FULL TURN, THEN SECURED ALONG THE POST WITH 6 HEAVY DUTY WIRE STAPLES AT LEAST 1 INCH LONG.
2. POSTS SHALL BE TIGHTLY ABUTTED WITH NO GAPS TO PREVENT POTENTIAL FLOW-THROUGH OF SEDIMENT AT JOINT.



ELEVATION VIEW




SIDE VIEW

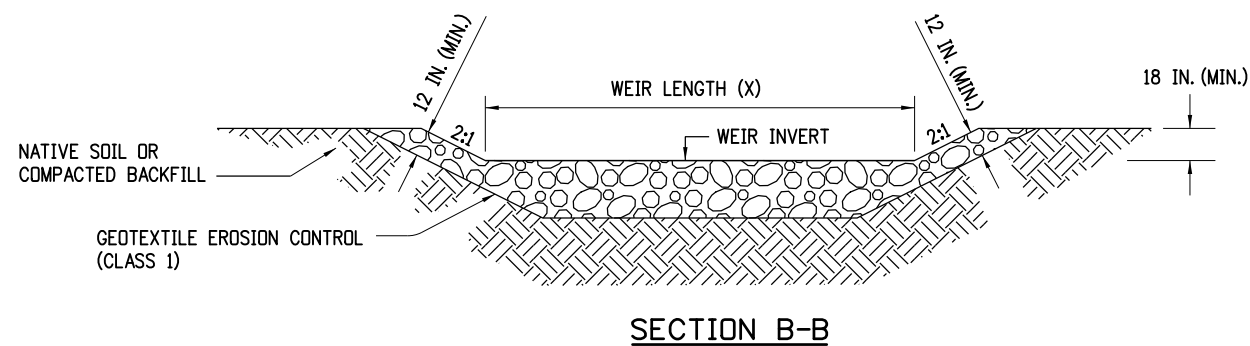
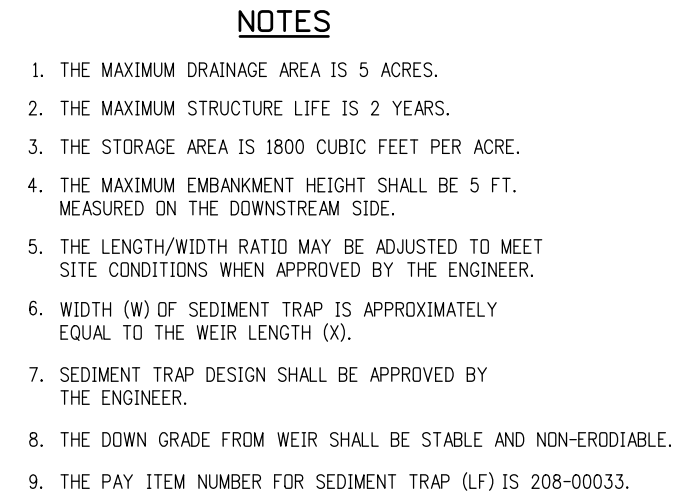
NOTES:

1. THE ENDS OF THE SILT FENCE FABRIC SHALL BE JOINED TOGETHER BY WRAPPING APPROX. 6 INCHES OF EACH END AROUND A STEEL T-POST, THEN SECURED ALONG THE POST WITH WIRE TIES (MINIMUM 3 PER POST).
2. POSTS SHALL BE TIGHTLY ABUTTED WITH NO GAPS TO PREVENT POTENTIAL FLOW-THROUGH OF SEDIMENT AT JOINT.
3. SILT FENCES SHALL NOT BE USED FOR CHECK DAMS.
4. THE PAY ITEM NUMBER FOR SILT FENCE (REINFORCED) (LF) IS 208-00021.

SILT FENCE (REINFORCED)

SILT FENCE APPLICATIONS

Computer File Information		<div>(R-X)</div> <div>(R-X)</div> <div>(R-X)</div> <div>(R-X)</div>	Sheet Revisions		<div>Colorado Department of Transportation 2829 West Howard Place CDOT HQ, 3rd Floor Denver, CO 80204 Phone: 303-757-9021 FAX: 303-757-9868 Project Development Branch JBK</div>	TEMPORARY EROSION CONTROL		STANDARD PLAN NO.	
Creation Date: 07/31/19			Date:	Comments				M-208-1	
Designer Initials: JBK									
Last Modification Date: 07/31/19								Standard Sheet No. 8 of 11	
Detailer Initials: LTA									
CAD Ver.: MicroStation V8 Scale: Not to Scale Units: English								Project Sheet Number:	
					Issued by the Project Development Branch: July 31, 2019				

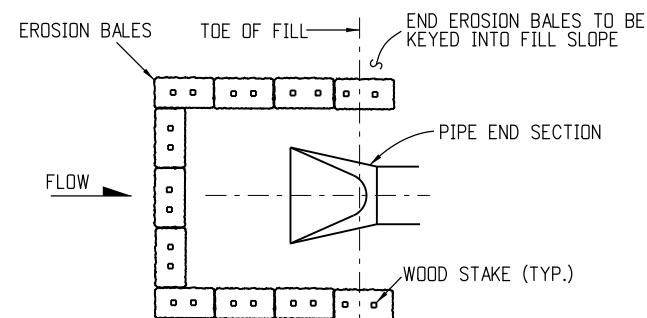
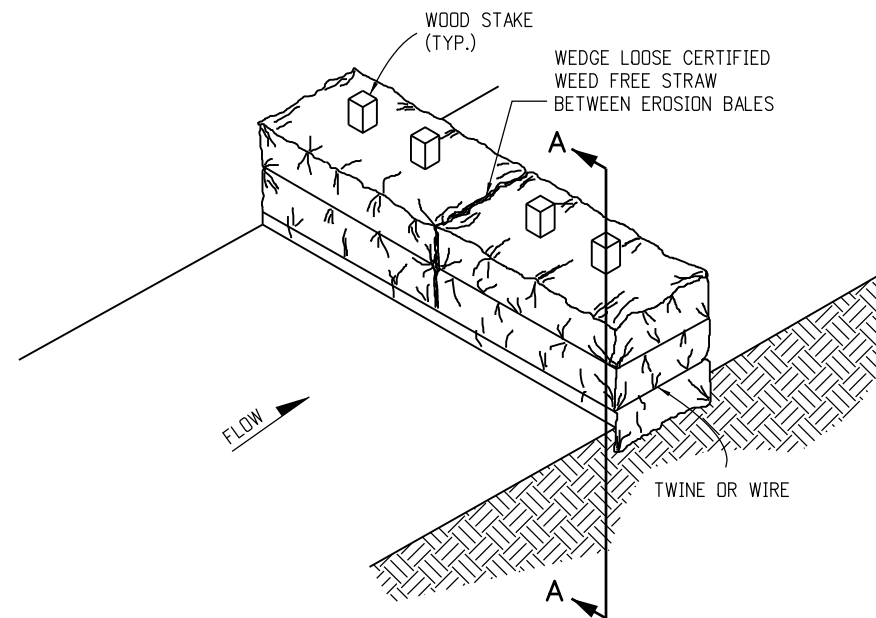
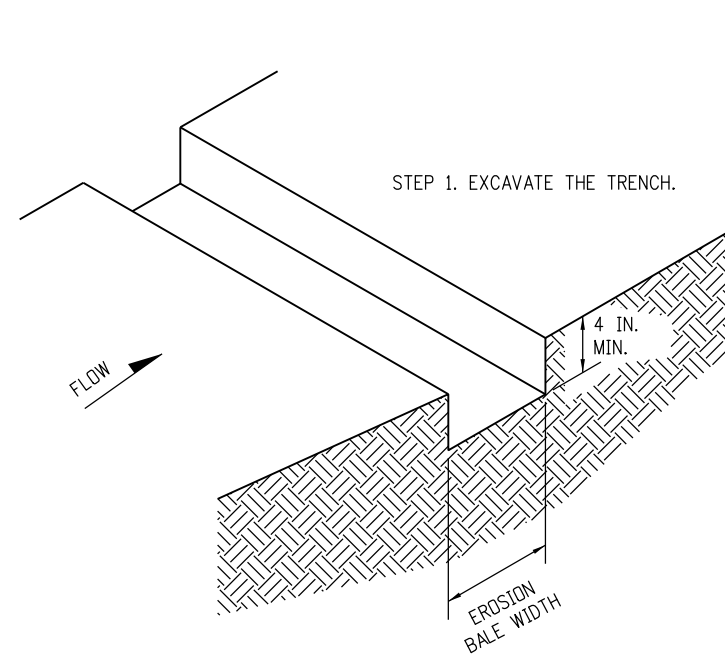


DRAINAGE AREA (ACRES)	WEIR LENGTH (FEET)
1	4
2	6
3	8
4	10
5	12

WEIR LENGTH TABLE

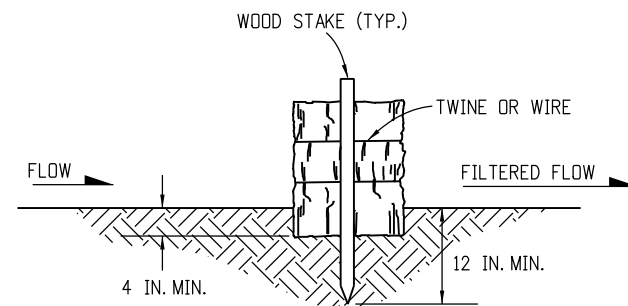
SEDIMENT TRAP

Computer File Information		<div><div></div><div></div><div></div><div></div><div></div></div>	Sheet Revisions		<div><div><div></div><div></div></div><div>Colorado Department of Transportation</div><div>2829 West Howard Place CDDT HQ, 3rd Floor Denver, CO 80204 Phone: 303-757-9021 FAX: 303-757-9868</div><div>Project Development Branch</div><div>JBK</div></div>	TEMPORARY EROSION CONTROL		STANDARD PLAN NO.	
Creation Date: 07/31/19			Date:	Comments		M-208-1		Standard Sheet No. 9 of 11	
Designer Initials: JBK									
Last Modification Date: 07/31/19									
Detailer Initials: LTA									
CAD Ver.: MicroStation V8 Scale: Not to Scale Units: English								Issued by the Project Development Branch: July 31, 2019	



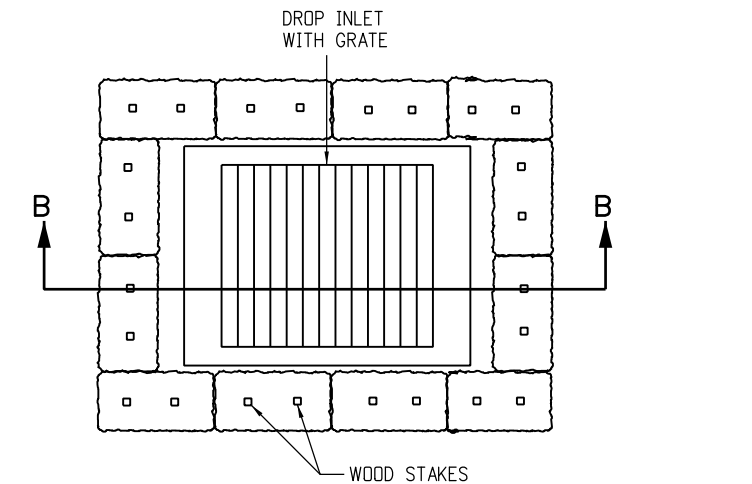
PLAN VIEW

EROSION BALE CULVERT INLET PROTECTION

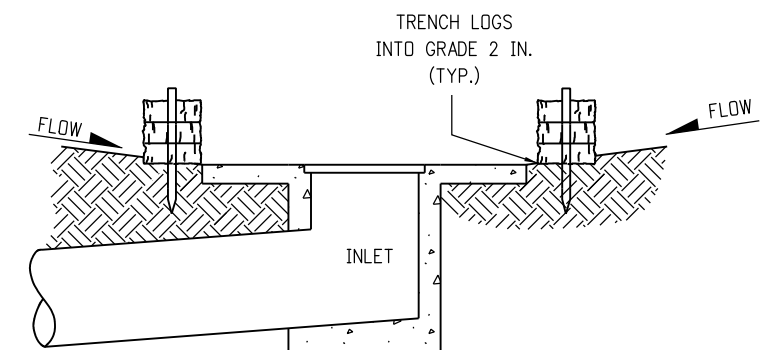


SECTION A-A

EROSION BALE TRENCHING AND STAKING



PLAN VIEW



SECTION B-B

NOTE: LOCATE EROSION BALES AT THE OUTSIDE EDGE OF THE CONCRETE APRON.

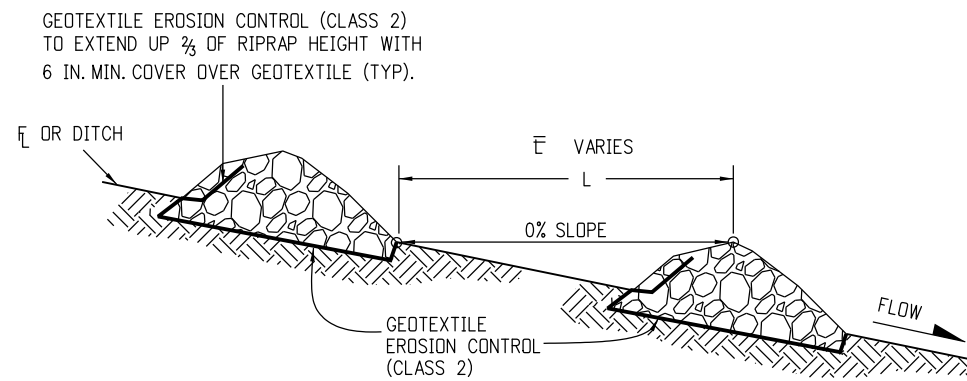
EROSION LOG FILTER AT DROP INLET

NOTES

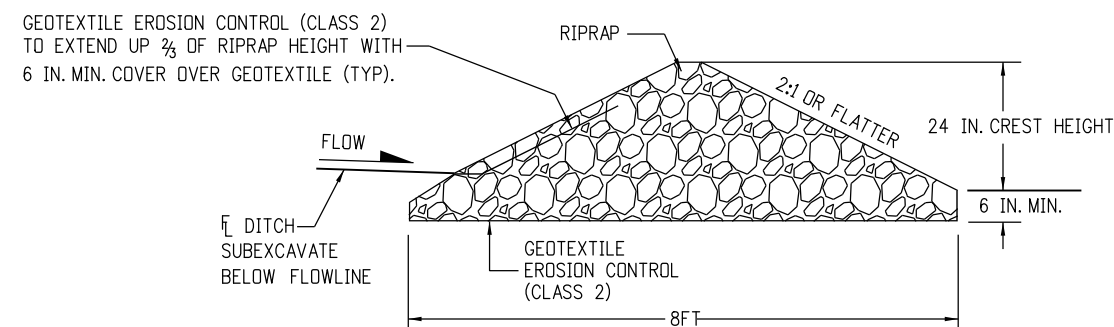
1. STAKES SHALL BE WOOD AND SHALL BE 2 IN. X 2 IN. X 30 IN. NOMINAL.
2. EROSION BALES SHALL BE 18 IN. X 18 IN. X 36 IN.
3. EROSION BALES SHALL BE ENTRENCHED 4 IN. MINIMUM INTO THE SOIL, THIGHTLY ABUTTED WITH NO GAPS, STAKED, AND BACKFILLED AROUND THE ENTIRE OUTSIDE PERIMETER.
4. EROSION BALES CANNOT BE USED FOR CHECK DAMS.
5. EROSION BALE FILTER SHALL BE LOWER THAN BERM ELEVATION OR USED IN A SUMP CONDITION.
6. THE PAY ITEM NUMBER FOR EROSION BALES (WEED FREE) (EA) IS 208-00011.

EROSION BALE APPLICATIONS

Computer File Information		Sheet Revisions		<div><div></div><div>Colorado Department of Transportation 2829 West Howard Place CDOT HQ, 3rd Floor Denver, CO 80204 Phone: 303-757-9021 FAX: 303-757-9868 Project Development Branch JBK</div></div>	TEMPORARY EROSION CONTROL		STANDARD PLAN NO.	
Creation Date: 07/31/19	<div>(R-X)</div> <div>(R-X)</div> <div>(R-X)</div> <div>(R-X)</div>	Date:	Comments		M-208-1		Standard Sheet No. 10 of 11	
Designer Initials: JBK								
Last Modification Date: 07/31/19								
Detailer Initials: LTA								
CAD Ver.: MicroStation V8 Scale: Not to Scale Units: English					Issued by the Project Development Branch: July 31, 2019	Project Sheet Number:		



SECTION VIEW ALONG DITCH FLOWLINE



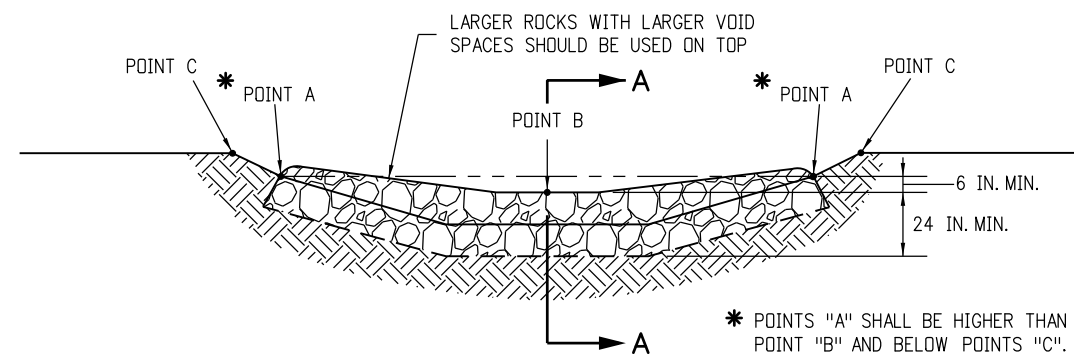
SECTION A-A

NOTES:


1. RIPRAP SIZE D_{50} = 6IN OR AS SHOWN ON THE PLANS.
2. THE GEOTEXTILE EROSION CONTROL SHALL BE CLASS 2 AND CONFORM TO THE REQUIREMENTS OF SUBSECTION 712.08.
3. THE ENDS OF RIPRAP CHECK DAM SHALL BE A MINIMUM OF 6 IN. HIGHER THAN CENTER OF CHECK DAM.
4. FOR USE AS TEMPORARY CHECK DAMS ONLY AND NOT FOR PERMANENT INSTALLATIONS.
5. THE PAY ITEM NUMBER FOR ROCK CHECK DAM (EA) IS 208-00041.

NOTE: ALL MATERIALS AND LABOR TO COMPLETE THE ROCK CHECK DAM SHALL BE INCLUDED IN THE COST OF WORK.

ROCK CHECK DAM



TYPICAL SECTION VIEW

Computer File Information		Sheet Revisions		<div>Colorado Department of Transportation</div> <div>2829 West Howard Place CDOT HQ, 3rd Floor Denver, CO 80204 Phone: 303-757-9021 FAX: 303-757-9868</div> <div>Project Development Branch</div> <div>JBK</div>	TEMPORARY EROSION CONTROL		STANDARD PLAN NO.	
Creation Date: 07/31/19	(R-X)	Date:	Comments		Issued by the Project Development Branch: July 31, 2019		M-208-1	
Designer Initials: JBK							Standard Sheet No. 11 of 11	
Last Modification Date: 07/31/19								
Detailer Initials: LTA								
CAD Ver.: MicroStation V8 Scale: Not to Scale Units: English	(R-X)				Project Sheet Number:			