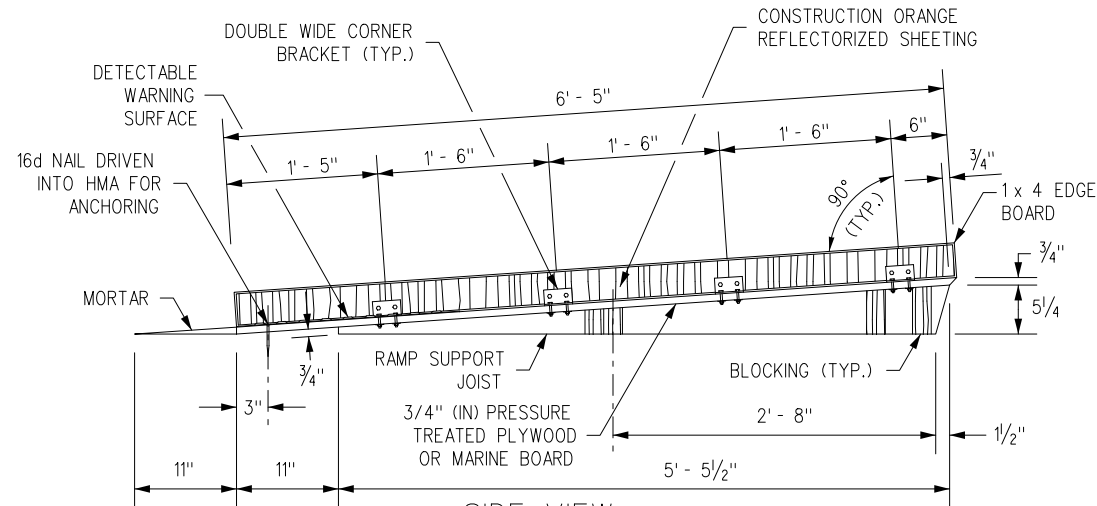
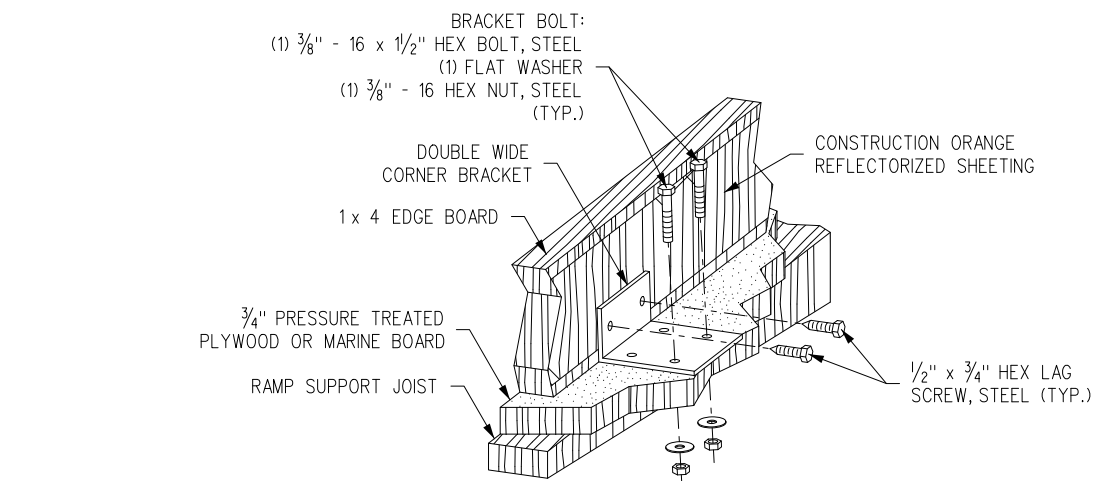


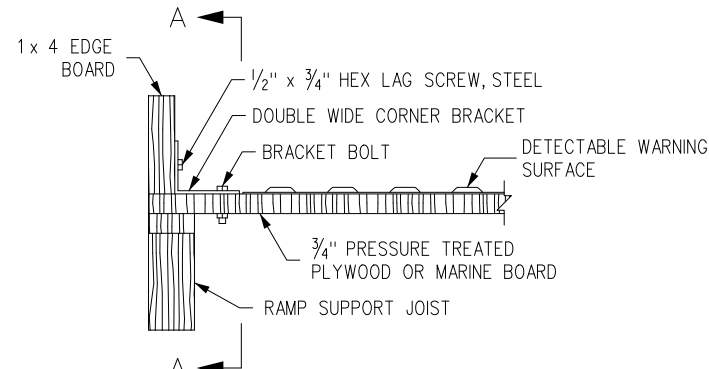
TOP VIEW



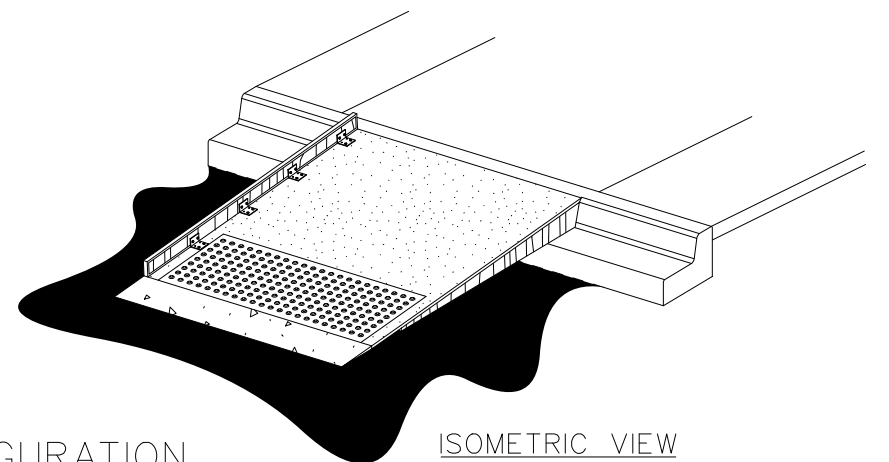
SIDE VIEW
RAMP AND EDGE BOARD



SECTION A-A
PERSPECTIVE VIEW



END VIEW



ISOMETRIC VIEW

NOTES

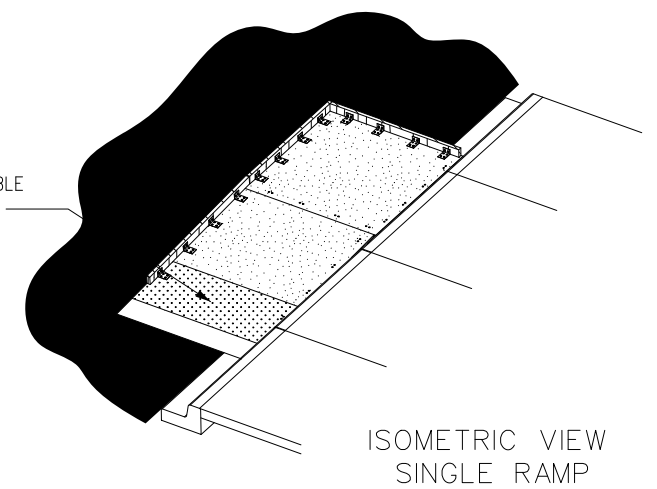
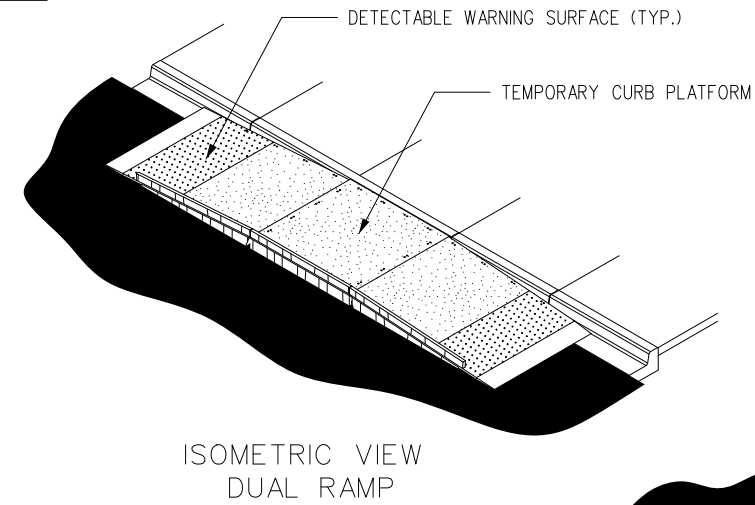
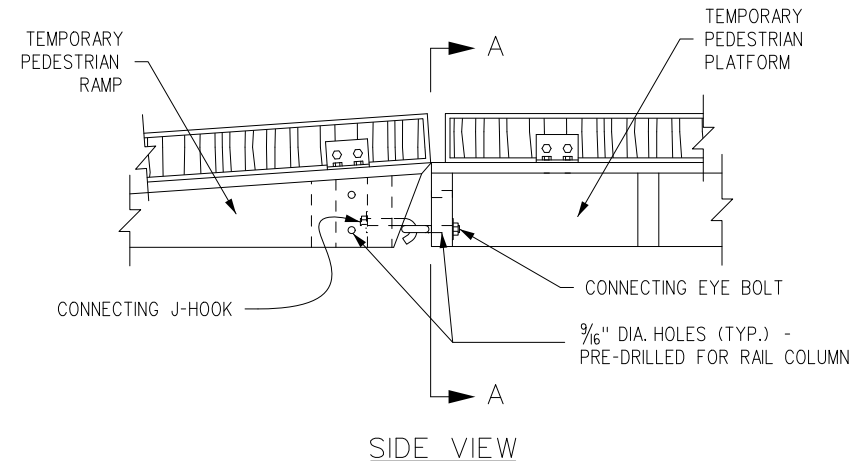
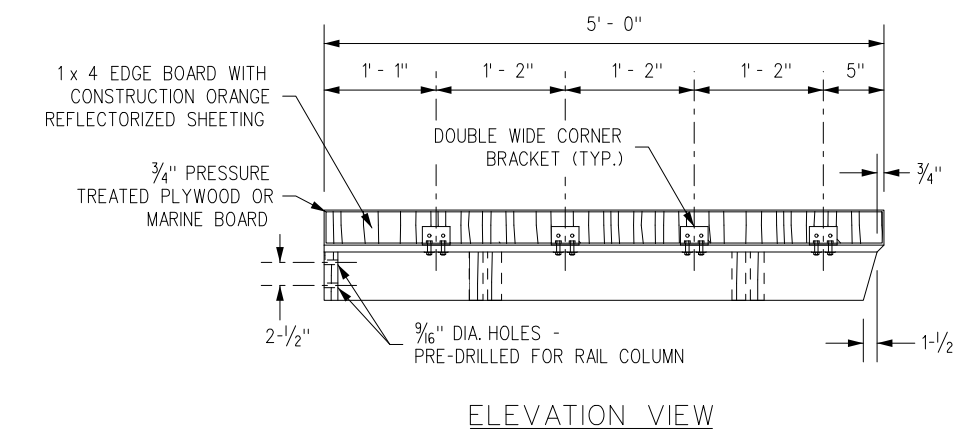
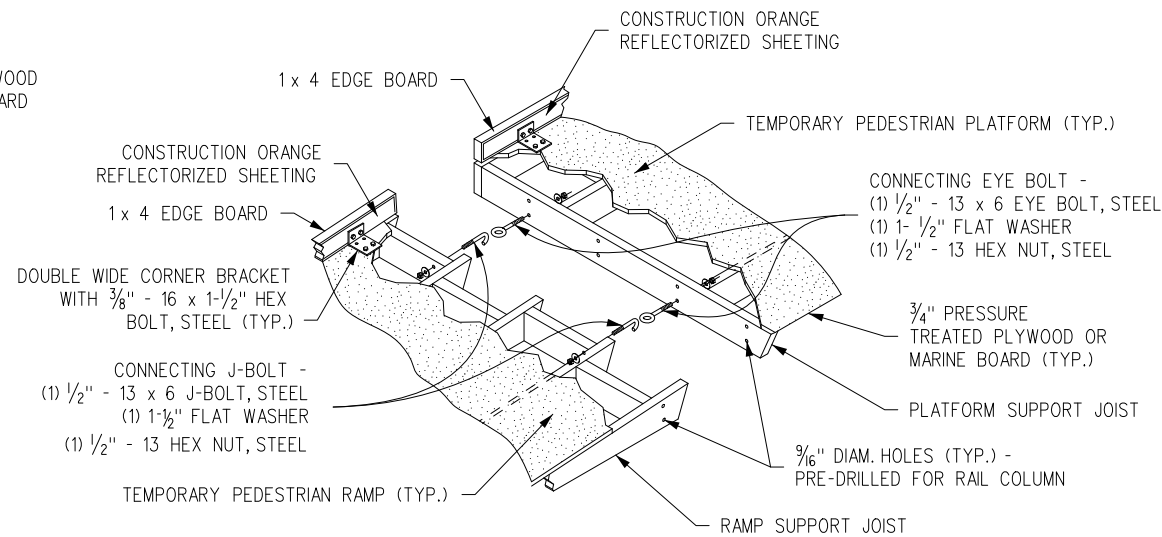
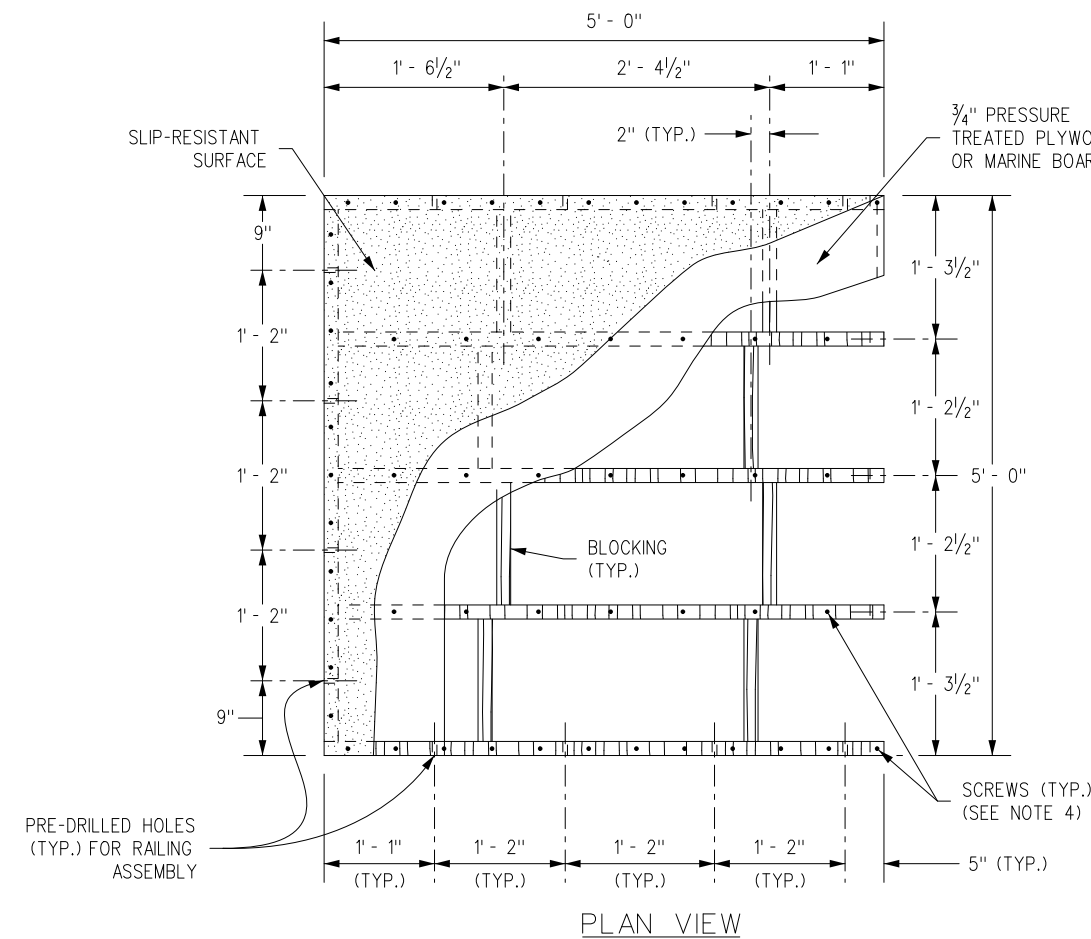
1. TECHNICAL QUESTIONS ON TEMP RAMPS CAN BE DIRECTED TO THE M-STANDARD ENGINEER AT 303-757-9021
2. A TEMPORARY PEDESTRIAN ACCESS ROUTE SHALL BE PROVIDED WHENEVER THE EXISTING PEDESTRIAN ACCESS ROUTE IN THE PUBLIC RIGHT-OF-WAY IS BLOCKED BY CONSTRUCTION, ALTERATION, MAINTENANCE, OR OTHER TEMPORARY CONDITIONS. FOR FURTHER WORK ZONE INFORMATION, PLEASE REFER TO CDOT'S WEBPAGE TITLED "ADA IN WORK ZONES".
3. THIS DESIGN ASSUMES OPTIMAL CONDITIONS AND A STANDARD CURB HEIGHT OF 6 INCHES. INSTALLED RAMPS SHALL BE NO STEEPER THAN 8.3% AND SHALL HAVE A CROSS-SLOPE OF 2.0% OR LESS. USE SHIMS OR GROUT AS REQUIRED TO ADJUST FOR EXISTING CONDITIONS AND TO PREVENT ROCKING. SHIMS SHALL BE NO HIGHER THAN 1 INCH AND SHALL BE SECURED TO THE RAMP. FOR CURBS SHORTER THAN 6 INCHES, INSTALL A RAMP ON THE SIDEWALK NO STEEPER THAN 8.3%, AND MADE OF GROUT OR AS APPROVED BY THE ENGINEER. ADJUSTMENTS TO THE RAMP DIMENSIONS SHOWN MAY BE REQUIRED TO MATCH EXISTING CONDITIONS.
4. SCREWS SHALL BE USED TO SECURE THE RAMP SURFACE. SPACING SHALL BE IN ACCORDANCE WITH THE CURRENT BUILDING CODE.
5. USE A SLIP-RESISTANT TREATMENT FOR THE SURFACE OF RAMP. SIZE DETECTABLE WARNINGS PER M-608-1.
6. ALL FASTENERS SHALL BE GALVANIZED.

TEMPORARY PERPENDICULAR CURB RAMP EXAMPLE CONFIGURATION

Computer File Information		Sheet Revisions		Colorado Department of Transportation 2829 West Howard Place, Suite 139 CDOT HQ, 1st. floor Denver, CO 80204 Phone: 303-757-9493 Civil Rights & Business Resource Center	<h1>TEMPORARY CURB RAMPS</h1> <p>Issued By: Project Support Branch</p>	<h2>EXAMPLE</h2> <p>Sheet No. 1 of 2</p>	
Scale: Not to Scale	Units: English	Initials: JBK	Date:				Comments:
(R-X)	(R-X)	(R-X)					
(R-X)	(R-X)	(R-X)					
(R-X)	(R-X)	(R-X)					

NOTES

1. TECHNICAL QUESTIONS ON TEMP RAMPS CAN BE DIRECTED TO THE M-STANDARD ENGINEER AT 303-757-9021
2. ALL HOLES SHOWN SHALL BE DRILLED TO FACILITATE RE-USE AND FLEXIBLE EXPANSION.
3. THIS DESIGN ASSUMES OPTIMAL CONDITIONS AND A STANDARD CURB HEIGHT OF 6 INCHES. INSTALLED RAMPS SHALL BE NO STEEPER THAN 8.3% AND SHALL HAVE A CROSS-SLOPE OF 2.0% OR LESS. USE SHIMS OR GROUT AS REQUIRED TO ADJUST FOR EXISTING CONDITIONS AND TO PREVENT ROCKING. SHIMS SHALL BE NO HIGHER THAN 1 INCH AND SHALL BE SECURED TO THE RAMP AND/OR PLATFORM. FOR CURBS SHORTER THAN 6 INCHES, INSTALL A RAMP ON THE SIDEWALK, NO STEEPER THAN 8.3%, AND MADE OF GROUT OR AS APPROVED BY THE ENGINEER. ADJUSTMENTS TO THE PLATFORM DIMENSIONS SHOWN MAY BE REQUIRED TO MATCH EXISTING CONDITIONS.
4. SCREWS SHALL BE USED TO SECURE THE RAMP SURFACE. SPACING SHALL BE IN ACCORDANCE WITH THE CURRENT BUILDING CODE.
5. USE A SLIP-RESISTANT TREATMENT FOR SURFACE OF RAMP. SIZE DETECTABLE WARNINGS PER M-608-1.
6. ALL FASTENERS SHALL BE GALVANIZED.



PLATFORM DETAIL

TEMPORARY PARALLEL CURB RAMPS (SINGLE OR DUAL) EXAMPLE CONFIGURATIONS

Computer File Information			Sheet Revisions		Colorado Department of Transportation 2829 West Howard Place, Suite 139 CDOT HQ, 1st. floor Denver, CO 80204 Phone: 303-757-9493 Civil Rights & Business Resource Center	<h1>TEMPORARY CURB RAMPS</h1> <p>Issued By: Project Support Branch</p>	EXAMPLE
Scale: Not to Scale	Units: English	Initials: JBK	Date:	Comments:			
(R-X)							
(R-X)							
(R-X)							
							Sheet No. 2 of 2